

4-24-1975

The Good Times, Vol. 3, No. 25, April 24, 1975

Florida International University

Follow this and additional works at: https://digitalcommons.fiu.edu/student_newspaper

Recommended Citation

Florida International University, "The Good Times, Vol. 3, No. 25, April 24, 1975" (1975). *PantherNOW - Student Newspaper*. 1010.

https://digitalcommons.fiu.edu/student_newspaper/1010

This work is brought to you for free and open access by the Special Collections and University Archives at FIU Digital Commons. It has been accepted for inclusion in PantherNOW - Student Newspaper by an authorized administrator of FIU Digital Commons. For more information, please contact dcc@fiu.edu.

McKenzie elected SGA chair

JIM BALL
Editor

Shirley McKenzie, a 28-year-old graduate student in travel and tourism, was elected SGA Chairperson in last week's vote

on members of the presiding board and 22 senators.

Ms. McKenzie, elected without opposition said that "most students do not know what SGA is all about. It has a lot of potential but not without feed-

back."

"The first thing my administration will work on is public relations, making students aware of SGA and what it can do. I would like SGA to become the representative body it can be."

"Senators should actually go out and meet their constituents. I am hoping the Senate body as a whole is more cooperative. There are so many things we can accomplish if we can get away from the petty bickering. There needs to be a cohesiveness in the Senate."

"I would like SGA to become the representative body it can be."
Shirley McKenzie

In the contested race for associate chairperson, Bernadette Kenneth defeated John McLaughlin 175 to 116. McLaughlin met with members of the elections committee on Monday to make formal complaints on the conduction of the election.

McLaughlin charged wht there was an improper connection between his opponent, Ms. Kenneth, and Lillian Kopenhaver, coordinator of student activities. Ms. Kenneth was a student employee in the student activities office prior to filing for the office of associate

chair. Ms. Kopenhaver answered the charge by stating that Ms. Kenneth was asked to resign her student assistant position the day she filed for office. "She resigned to alleviate any conflict of interest," said Ms. Kopenhaver.

Other charges leveled at the committee by McLaughlin included the destruction of several posters, late acceptance of campaign documents, lack of security of the voting machines, deliberate placement of the machines to discourage voting. "It (the election) was a promotion of apathy," said McLaughlin.

Following a heated discussion with committee members constantly asking for evidence to back up the charges, the committee passed a motion that McLaughlin had no valid complaint. The committee made all election documents available to McLaughlin for his inspection.

"It (the election) was a promotion of apathy." John McLaughlin

Bob Sanders, Commissioner of the election, said that "the elections followed all the rules--there were no inconsistencies." Charles Hepburn, a committee member, added, "We are satisfied that the machines were secure."

Also elected to the presiding board without any opposition were O. H. Michael Smith for Comptroller, Bill More as Consularie, and Linda Ryan won on write-in votes for scribe.

In the College of Arts and Sciences, James W. Evans, Diana Garcia, Mark W. Magnan, and Peter Mann won seats in the senate. In the School of Business, Kayode Adeshina and Maria E.



Voters wait to cast ballots during last week's election

GOOD TIMES

VOL. 3, NO. 25

FLORIDA INTERNATIONAL UNIVERSITY

THURSDAY, APRIL 24

Budget uncertainties plague FIU

Although Florida International University's future economic situation is being plagued by many uncertainties, at least until the State Legislature reaches agreement on the funds to be allocated to higher education, it seems almost certain that "no one is really escaping the effects of the budget crunch," according to Associate Vice President for Academic Affairs Robert C. Fisher.

Five letters of non-renewal have gone to first-year faculty members, Fisher said, and he pointed out that at this stage they mean "the University makes no definite commitment to rehire them (at the end of their current contracts)."

At one time, Fisher said, it appeared "we were going to have to dismiss 20 first-year faculty, but because of a number of resignations and because the bulk of the 26 positions the

University was directed to give up became vacant positions, we did not have to do this."

However, Fisher said, the bulk of the 26 positions were being used to provide funds to pay adjunct professors who were doing a great deal of teaching. "The loss of those positions is going to have a severe impact on the University's academic programs," he said.

If the budget for fiscal year 1975-76 is as pessimistic as most predictions have it so far, it will mean that many departments will experience additional decreases in the size of their staffs.

In the School of Business and Organization Sciences, for example, the expected budget limitations are bound to have severe effects even though some additional regular positions will be added. The reason, Fisher said, is that considerable teaching was done by adjuncts and funds for these will not be available on the same basis as before, and the regular positions

will not offset the loss of adjunct professors.

The University Library already has been forced to stop new purchases for the remainder of this fiscal year. "There have been no new orders, except for continuing subscriptions, and this can be quite damaging to a growing institution," Fisher said.

In addition, the School of Education will feel the pinch in

International Week set for May 12-16

Plans for International Week activities include art displays, films, lectures, a bazaar and even a belly dancer.

International Week, May 12 through 16, is being worked on by FIU students from different countries to acquaint the FIU community with aspects of their cultural heritages, and says Jim Aggett, coordinator, "to show the

rest of the student body that there is a large and active contingent of foreign students here on campus."

The committee of interested students, which has been working on the project since early January, meets every Monday and Friday at 12:30 pm in UH 317 and welcomes any help or suggestions.



What to do with the trunk of a palm tree? This Coral Gables resident found one solution.

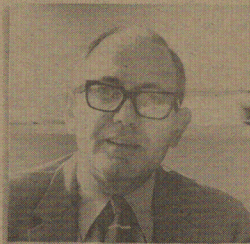
Jackson: 'an international problem'

NICK KLOTSCHKOW
Reporter

Dr. Daniel Jackson, Director of Environmental and Urban Systems, spoke of environmental degradation as being a problem of the earth as a whole. Pollution doesn't recognize national boundaries, he said, illustrating his nt with slides collected in his studies of pollution around the world.

From Djakarta, Indonesia, were slides of the multitude of canals and waterways so vital to the Indonesian way of life.

Garbage and filth flowed in the waters used by the natives for washing their clothes, tran-



"Pollution does not recognize national boundaries," Dr. Daniel Jackson

sportation, defecation, and recreational swimming. Indonesia has one of the highest rates of water-borne diseases in the world.

Venice, the magic city of canals, has similar problems

with its waterways. It also has a Fiat automobile factory which introduces sulphur dioxide into the atmosphere.

The discharge is causing the erosion and decay of irreplaceable sculptures by Renaissance ar-

tists such as Michelangelo. The works of art have stood for centuries unaffected by the ravages of time. Modern man is undoing in a few decades a tangible and ageless record of a milestone in civilization, Jackson says.

Japan also has a problem with industrial waste being discharged into the water, in this case mercury being dumped into the Pacific Ocean.

The mercury is ingested at the bottom of the food chain by one-celled plants and animals. Eventually man ingests it in the ish which eat the plants and animals as a vital part of their diet.

Bill would aid Vets buy books

A bill which would provide \$50 per quarter for the purchase of books to veterans attending junior, senior or graduate schools in the Florida State University system has been introduced in the Florida House by Rep. Fred Hagan (R-Orlando).

The bill, which is presently in the Veterans Committee, if passed would affect 8,000 veterans in the state and would cost \$1.2 million per year. Interested veterans should write their state representatives or contact the Veterans Affairs Office, UH 340, for further information.



I want to thank all of you who made my election possible.

Editorial

SGA has failed student participation

If Student Government Association was created to give students a taste of participatory democracy, it has failed. The student body on this campus is too busy participating in "the real world" to play at college games.

When a constituency of 10,000 persons turns out only 460 of them for an election of mostly uncontested seats, the message should be clear.

There is no need for a student government at this University.

If the purpose of SGA is to give students a voice in the administration's activities, this has failed also. The SGA Senate is so bogged down in trying to figure out what they are supposed to be doing and what the red tape to be cut through it, that the illustrious body succeeds in doing very little else but pay themselves.

The SGA Chairperson, is included as the "token student" on myriad university committees and attends social functions as THE student, but without any feedback or backing from the student body and without any teeth to her position, she is mainly a figurehead. A figure-head to a non-existent body.

Lastly, if the purpose of SGA is boiled down to merely channeling student activity funds to the various student organizations and activities, this could be done either by the University directly (since all money has to be approved by the University in the form of the Student Activities Office anyway), or by a much smaller, and hopefully, more efficient group of students, such as the presiding board alone.

When a Senator can be elected by a total of two write-in votes, the SGA in general and the Student Senate in particular should be seriously reassessed.

GOOD TIMES

FLORIDA INTERNATIONAL UNIVERSITY

GOOD TIMES is an independently funded student newspaper, published weekly during the academic year at Florida International University. The student publication office is located at 212A University House, Florida International University, Tamiami Trail, Miami, Florida 33144, Phone 552-2118.

Editor Jim Ball
Business Manager Grace Kelleher
Advertising Manager Art Green
Managing Editor Robyn Bender
News Editor Donna Robins
Features Editor Harry Privette
Entertainment Editor William Schweikert
Sports Editor Bobo Berry

Opinion

Maingot: 'clarifying what was said'

To the Editor:

Few things seem to me more tedious than writing a newspaper to clarify "what was actually said." Usually, I would avoid the tedium by simply ignoring the distortions, fully aware that today's headlines are already yesterday's news.

I chose to depart from this position in the case of your reporting of my Tuesday Perspectives talk (Good Times, April 17, '75, p. 1) for two reasons: first, the report was inaccurate to the point of projecting me as a simpleton, and an ethno-centric one at that.

To be portrayed as a male chauvinist is unpleasant; to be portrayed as a stupid male chauvinist is intolerable. I respond, thus, because the instinct for self-preservation proved stronger than the instinct to avoid tedium.

Additionally, I thought it provided me with an opportunity to state some views on the role of a university newspaper.

Now it is interesting that the talk given at FIU is exactly the same talk given to the nurses and psychiatric aids at Miami's Mercy Hospital on March 6. The talk, thus, was not prepared for a group seeking a lunch-time hour's relaxation and entertainment but rather for people having a serious applied purpose in mind.

That audience's response to my presentation is attested to by the letters now in my files. The second audience, FIU's, was smaller and more diverse, but from what I could gather and unless I delude myself, equally appreciative. What was my point in this one lecture to these two different audiences? In a nutshell:

1) The nouns *macho* and *machismo* have wide and diverse usage in American English; they have specific usage in Hispanic American usage. In the latter case, they refer to specific, socially-defined attributes of masculinity, especially in the sexual area. In the former case, they have become a grab-bag concept, a linguistic product of the major social, political and economic struggle for female equality; it is a social movement's borrowing of foreign words to better, or at least more powerfully, define the opposition.

This usage may have political advantages but it also has serious risks: the risks of simplification and stereotyping of the Latin American male and its consequences: heightened ethnocentrism.

I mentioned that the other side of the coin of this political usage of the "macho" imagery is the exploitation by advertisers of the exotic-sensual aspects of that which is prohibited: a secret love-hate relationship develops, a phenomenon not unknown to those who have studied the sexual dimensions of Black-White relations in this country.

2) I illustrated this phenomenon by a discussion of

the attempts to apply psycho-pathological research methods of political behavior developed in the U.S. to Latin American cases.

The Freudian theoretical postulates (which as all good dogmas are supposed to transcend cultural differences) of this psychoanalytic school tends to focus on repressed sex and its traumatic impact on personality development and thus on political behavior.

I discussed briefly the works of Harold Lasswell, Robert Lane and others, and I concluded with a more detailed analysis of Walter H. Slote's "Case Analysis of a Revolutionary."

In this study, the American psychoanalyst submits a Venezuelan Marxist revolutionary to a barrage of T.A.T. and Rorschach tests to conclude that "the informant has deflected the psychosexual drive into other channels."

So that this young Venezuelan's concern over social justice and equality is interpreted as "...sexuality... sublimated and directed into the area of social injustice." He has channelled "an unacceptable drive" into "an acceptable one."

But the whole sociological approach to *machismo* indicates that overt sexuality far from being unacceptable is an explicit part of the male, and female, socialization process. Just because an American middle-class respondent interprets a picture of a thermometer stuck into a bucket of ice in phallic and sexual terms does not mean that a Venezuelan who fails to so interpret it is sexually repressed or worse, "deeply damaged" psychically.

Who authorized curbs?

To the Editor:

Pardon me but who is appropriating the money for F.I.U.? The way this school wastes money we must have former defense department heads in the administration giving advice.

For example, who in hell authorized those ridiculous curbs across the roads? I hope whoever did replies to this angry student and explains why. But please do not use the excuse of students speeding around campus like A. J. Foyt.

Now it's like driving in a demolition derby to get off the

To conclude, then, the psycho-analytic approach to sex and politics in the U.S.A. stresses repressed sexuality; the social-anthropological studies of Oscar Lewis, Rogler and Hollingshead, Stycos, Pitt-Rivers, Watson and the many others I mentioned, stress the open and free approach to sex of the Latin American lower classes (and to somewhat lesser degree, middle classes).

I gave no answers as to how to study sex and politics in Latin America; I merely mentioned the dangers of a total transference of psychoanalytic methods across cultures. The same holds, of course, for the mindless transference of the term *machismo* from its Latin context to refer to American male behavior.

The important question becomes: should the student newspaper attempt to cover conferences of this nature? If it does cover them, how does it present what was said to its readers? I can understand that a front page news report which states that Dr. Maingot asserted that Americans are sexually "repressed" while Latins are sexually "liberated" has a higher sensational value than one which merely presents a synthesis of a theoretical formulation such as the one actually presented.

But after all, you are a subsidized paper, you really need not engage in tabloid-like sensationalism to survive. The paper has a serious role to play as the "multiplier" of intellectual currency on this Campus; get yourselves together and start assuming the responsibilities which accompany your charge.

Anthony P. Maingot
Acting Dean,
International Affairs

campus. If you just barely crawl over these repulsive obstacles, your car can receive damage. I pity the poor soul who hits a speed bump driving at an excessive speed of 5 mph.

It's about time this university spent money on more useful things than gaudy curbstones, who if you can find one person who likes them then they're probably related to the moron who thought up the whole insane idea in the first place.

I hope that again students will speak out to these ridiculous wastes of their money and demand a reason why it happens.

Keith D. Smith, Jr.

Speed bumps annoying

To the Editor:

Thoughts on the speed bumps ... I am sure that we like to think our university has a touch of class. Thus, even quality institutions sometimes have to install annoying speed inhibitors, and we are apparently in need of them.

I've noticed, however, that the speed bumps at quality places

are quite wide and they are sloped. With this design speed is still inhibited but the jarring bump is eliminated.

Already I notice that the grass is being worn away where cars go around the bumps. I wonder if the university would consider modifying the bumps to be more in keeping with our fine campus.

Bill Orchard

News Briefs

SAGA awarded contract for FIU food service

The Office of Administrative Affairs announced last week that SAGA Food Service has been awarded the food service contract at FIU. The contract has

been forwarded to the BOR for routine approval. The firm will begin its FIU operation in July when Servomation's contract expires. SAGA's contract with FIU will be for three years.

FIU students honored

Scott A. Marr, of Miami, who is majoring in the accounting program at Florida International University, was honored for outstanding achievement and promise in the field of private accounting by the Financial Executives Institute, South Florida Chapter, at its First Annual Education Night dinner on Thursday, April 16 at the Banker's Club, One Biscayne Tower.

Education night represents an effort by the Financial Executives Institute to establish closer working relations between business and education, a chapter spokesman said.

Marr is a senior who will graduate in June. Two other students were also given awards for achievements in their respective institutions. They were: Norman A. Getson, of Philadelphia, an accounting major at the University of Miami, and Michael J. O'Reilly, West Palm Beach, who is working on his M.B.A. in accounting at Florida Atlantic University.

The dinner speaker at the education night was William A. Wynn, Jr., President of Urban Ventures, a program designed to encourage minority-owned small businesses. He is also Vice President of United Way.

Chavez to speak at fiesta

Cesar Chavez, President of the United Farm Workers, will speak at the 2nd Annual Fiesta for Migrant Workers to be held on Sunday April 27 between 12:00

noon and 6:00 p.m. at Watson Island, home of the Japanese Garden, across from the Goodyear Blimp on MacArthur Causeway. The admission donation for adults is \$2.50.

LEEP applications due

Please advise students in all classes that LEEP application forms must be in the Financial Aid Office by Friday, April 25th. Those forms already turned in must indicate where the student last received LEEP assistance. No new students will receive

LEEP funds unless such funds were received at some other school.

If there are any questions, please contact Mrs. Emma Olson, Financial Aid Office, 552-2431.

Dr. John Hall to address Phi Beta Kappa meeting

The Phi Beta Kappa Association of South Florida invites members of the society to its spring meeting at 8 p.m. on Wednesday, April 23 at Academy of the Assumption, 1517 Brickell Ave.

Dr. John Edward Hall, Associate Professor of Archaeology, University of Miami,

will discuss what is happening today in marine archaeology around the old and new world.

Dr. Hall, who has specialized in pre-classical Greek archaeology and art history, is on the staff of the Rosenstiel School of Marine and Atmospheric Science.



Larry Chervernak speaks to FIU hosts on systems in the hospitality industry.

Labor research offers course variety

MICHAEL J. DUKEWICH
Contributor

The Institute for Labor Research and Studies is a program offered at the FIU campus that provides educational services, research services, and technical assistance to union organizations, businesses, and public agencies according to John Remington, director, Institute for Labor Research.

These meetings are held at designated places on or off campus and are taught by qualified professors or professional businessmen. Much of the teaching however is done by either John Remington or Judy Ellis. A charge is made to cover teaching services and materials.

Basically, the institute holds programs, conferences, and

seminars for the various management and labor groups seeking assistance.

The institute offers a variety of topics such as labor relations training, current economic issues, and communication skills.

Some of the courses may emphasize problems of manpower development training, unemployment, automation and human relations.

(Continued on Page 11)

Budget cuts

(Continued from Page 1)

the form of fewer adjunct professors and clinical instructors. Laboratories and clinical sciences may have fewer assistants as well as smaller stockpiles of consumable supplies which are rising in costs, while the available budget to replace them dwindles.

The Fine Arts Department may be forced to curtail or cancel altogether some special music instruction funded by OPS funds, money that really came from some vacant positions this year that will not be available next fiscal year.

SGA Elections

(Continued from Page 1)

Moarquench were elected. In Technology, Thomas Bringham, John O. McKirchy, Patricia McKenzie, and Michael Magenheim were elected.

In the School of Education Steve Braidman, Dennis McLean, and Lorraine Terauare won seats. In the School of Health and Social Services, Carmen Fajardo, Shyrall Clark, Mark Frazier, Estelle Fenton, Susan Bordman were elected. And in the School of Hotel, Food and Travel, Athama Bowe, David R. Apfelbaum, Carlos Banks, and Leroy Gomez won seats.

Voting in the election was extremely light with approximately 460 of FIU's 10,000+ student body casting ballots.

News from...

Student Services

All students interested in full-time, part-time and/or summer employment are encouraged to check the opportunities being reported to the Career Planning and Placement Department located in University House 330.

Full-time entry level career positions and advanced level career positions are regularly reported by Miami area employers interested in bachelors and masters level candidates. A number of such employers also arrange interview visits to the Career Planning and Placement Department to screen potential candidates for career opportunities. The on-campus interview process will continue through mid-May. Schedules are posted weekly and the employers visiting the campus are announced in The Good Times "Weekly Calendar of Activities." Students interested in the on-campus interviews need to complete a Personal Data Profile page provided by the Career Planning and Placement Department.

Students interested in part-time employment opportunities will find two special notebooks of part-time employment announcements available in the department.

Department hours are from 8:30 a.m. to 7 p.m., Monday through Thursday and 8:30 a.m. to 5 p.m. on Friday.

Official University Announcement

David Greenwald



April 29 UH Forum

12:30-1:45

WRITER AND ARTISTS

All students are urged to submit poetry, stories, art work, and photography for publication in FIU's only literary magazine.

Material must be original and creative.

Turn copy in at UH 212A by May 25.



GOVERNOR'S
HIGHWAY SAFETY
COMMISSION
Florida Department of Administration

NO-FAULT AUTO INSURANCE AT LOW RATES FOR MALES 16-24

For example — high rated area, East & South of Palmetto Xway.

Married Male	Annual Premiums	Single Male
19-24 \$225		22-24 \$315
16-18 \$375		18-21 \$323

Premium covers liability 10 20 5 No fault PIP \$5000, uninsured motorist 10 20. Additional benefits available — 10% Driver Training Discount. No interest on policy financed. Call or come in for any additional information.

ALMERICO INS. AGENCY 821-9925
325 E. 49th St. Hialeah, Florida Open 9 A.M.-9 P.M.

The Arts

Josie Helming Earnest-ly

wbs
ENTERTAINMENT EDITOR

On May 14, the FIU Theatre begins a two-week (Wednesday through Sunday) run of Oscar Wilde's *THE IMPORTANCE OF BEING EARNEST*. Joanna Helming, who earlier this season directed *FROG POND* and played Martha in Albee's *WHO'S AFRAID OF VIRGINIA WOOLF?*, will direct the sublime British comedy.

We spoke with Ms. Helming about a variety of subjects centering on comedy, Oscar Wilde and *EARNEST*...

GOOD TIMES: What are we dealing with in the comedy of Wilde?

Josie Helming: It compares more with Restoration Comedy and comedy of manners. The information that I've read implies that Wilde was really having a wonderful time epigramming his way through a play. He had tried on a number of occasions to write plays of varying degrees of seriousness, and that (*EARNEST*) really wasn't. While it certainly does have some comment to make on society, it's probably over-stated. The people really have very little relation to real people; the importance of it is that they are all charming and that they work very hard at being charming.

GT: Do you find that's generally true of Wilde's plays or that it's more so with *EARNEST*?

JH: I think it's most efficiently and effectively shown in *EARNEST*. *LADY WINDERMERE'S FAN* is the other one that's usually most often done, and I just like *EARNEST*: it's the most fun. And I'm much more familiar with it too.

GT: It's the most generally popular of Wilde's plays?

JH: Yeah, I think it's because in a lot of ways it's the most interestingly put together and it's got lots of interesting people; even the small roles are fun and have a certain amount of charm to them.

GT: Would you say, too, that it has more of the flashing Wilde wit?

JH: It's obviously a vehicle for him to be clever for three acts—and he is. His people take great pride in their being clever; everybody (in the play) does. (They're) clever and witty and

well-spoken and well turned out—visually.

GT: There's a sort of grand manner about even the least grand characters, inevitably, in it?

JH: Yes, but, by the same token, it's very important that they be essentially likable. That's, I think, where the charm lies; you're not put off by them, because their charm is in their inability to see any incongruity in their conversation.

And Wilde deals almost completely in congruity: when Jack and Algy's lives are crashing around their heads at the end of the second act, they're eating muffins—and discussing who should eat which muffins, in all seriousness—and that's what makes it funny.

GT: Isn't there a subtitle to the play, something like "A Serious Comedy for Trivial People"? Wilde—even in his darkest hours, of which he had a few—tended to find a lot of things that people take seriously just a little bit trivial, purely because of his puckish sense of humor.

Theatre majors direct productions

wbs
ENTERTAINMENT EDITOR

FIU Theatre majors participating in directing classes will direct their own productions throughout the Spring Quarter, Director of Theatres Philip Giberson announced today.

Audition dates, rehearsal dates and dates of performances are as follows: *NO EXIT*, directed by Mary Alice Brown, performances April 23-25; *THE FANTASTICKS*, directed by Randee Lipson, performances April 30-May 2; *MRS. DALLY*, directed by Melissa Nurenborg, performances April 30-May 2.

Catherine Pantuso directs *STRIPTEASE*, performances May 7-9; Norma David's *PYRAMUS* tryouts will be held April 28-29, rehearsals May 5-20, performances May 21-3; Robert

Gallo's *GINO'S LAMENT* follows the same scheduling as Ms. David's play.

INDIANS, directed by Pat Porter, auditions on May 5-6, rehearses 5/12-27, and plays 5/28-30; *UNDERCURRENTS*, directed by Lola Biggs and *POUND ON DEMAND*, directed by Tim Hamlett, both audition May 12-13, rehearse 5/19-6/3 and play June 4-6. On May 19-20, Dale Sanmiguel will hold tryouts for *HEMINGWAY*, which will rehearse 5/26-6/9 and play 6/10-12; *FAM AND YAM*, directed by Nancy Sivitz will follow the same schedule.

Productions yet to be announced will be directed by Enrique Baradat, Laurie Mandy and Talmadge Scott will audition May 22-23, rehearse 5/26-6/9 and play June 10-12.



Joanna Helming

I picked it because it was fun, it was interesting for the students here to do, and because it was close enough in terms of the time frame, for them to enjoy doing it. It's not as long as the Restoration plays, which are great fun, but interminable.

We did it also because the

number of scene-changes that we could make would fit into this frame and that it was more flexible than one of the other, similar period plays—that are essentially plays of manner.

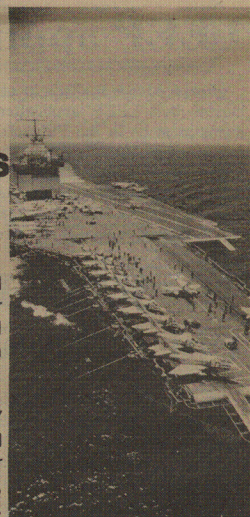
The fact that we have no

(Continued on Page 9)

Naval Officer Opportunities

in **NUCLEAR POWER and ENGINEERING CORPS 8** for graduates, seniors and juniors majoring in engineering and science

In the **NAVAL SUPPLY CORPS** — for seniors and graduates in computer science, accounting, business, management, etc.



In **HEALTH CARE ADMINISTRATION** — for graduates and seniors

In **AVIATION** — pilot and Naval Flight Officer programs for graduates, seniors and juniors in any major

and in **LAW and MEDICAL-DENTAL STUDENT** program — for seniors anticipating acceptance to a law, medical or dental school.

For more information talk to the Navy Officer Information Team on campus in UH from 9:30 a.m. to 1:30 p.m. Today & tomorrow, or call us at 661-8960/8969

Be Someone Special . . .

**Banyonwood
South
Apts.**

**FOR SINGLES
1 and 2 Bedroom Apts.**

Featuring:
• Large Heated Pool with 3 Meter Board
• Lighted Tennis Court
• Sauna Baths
• Exercise Equipment

Apts. Furn. or Unfurn. Wall to Wall
Shag Carpet. Completely Furn. Kitchen.
Central Air and Heat. CALL OR
VISIT Rental Office.

**FOUNTAINBLEAU
PARK**

8820 Fountainbleau Blvd.
Apt. 112 — 223-5243

BLOOD DONORS

All Types For Whole Blood

\$15.00

No Appointment Necessary

Call 251-6240

17635 South Federal Highway, Perrine

Mon.-Fri. 8:30-4:30 p.m.

Closed Saturdays

Blood Services of Greater Miami Inc.

Florida International University Summer Quarter Class Schedule

MORNING

CLASSES

— 8:00- 10:05
—10:15- 12:20
—12:30- 1:30
(Free activity
Period)

Days:

M - Monday

T - Tuesday

W - Wednesday

AFTERNOON

CLASSES

— 1:45 - 3:50
— 4:00 - 6:05

R - Thursday

F - Friday

S - Saturday

EVENING

CLASSES

— E6:20 - 8:25
— E8:45 - 10:50

Note: An "E"
before a time
denotes that the
course is being
offered in the
evening.

Fees are assessed based on the level
of each course attempted. They are
set annually by the Board of Regents
and the Legislature. The fees
established for 1974-75 are detailed
below:

Registration Fee (Per Credit Hour)

	Florida Residents	Non-Florida Residents
Undergraduate Courses	13.00	37.00
Graduate Courses	16.50	40.50

(for fee purposes all classes on a 500
level and above are considered
graduate courses)

Registration is not complete until all
fees are paid. Additional information
concerning due dates for fee payment
will be provided with individual class
schedules mailed approximately one
week before Change Day.



ARTS & SCIENCES

SOCIOLOGY/ANTHROPOLOGY

COURSE NO.	TITLE	SECT.	CR.	TIME	DAYS	INSTR.
ANT 301	SCOPE OF ANTHROPOLOGY	C01	05	800-1005	MR	BROWN
ANT 326	MYTH, RITUAL, MYSTICISM	C01	05	145-350	MR	SMITH
ANT 491	DIR. INDEPENDENT STUDY	C01	VAR	TBA	TBA	BROWN
ANT 491	"	C04	VAR	TBA	TBA	SMITH
ANT 591	DIR. INDEPENDENT STUDY	C01	VAR	TBA	TBA	BROWN
ANT 591	"	C04	VAR	TBA	TBA	SMITH
SOC 451	URBAN SOCIOLOGY	C01	05	E620-825	TR	OSBORNE
SOC 461	SOCIAL STRATIFICATION (MOBILITY)	C01	05	E620-825	MR	LEVINE
SOC 462	THE PROBLEM OF BUREAUCRACY IN THE MODERN WORLD	C01	05	E620-825	TR	LEVINE
SOC 478	SOC. OF RELIGION	C01	05	1015-1220	MR	OSBORNE
SOC 582	SOC. OF EDUCATION	C01	05	E620-825	MR	REID
SOC 498	DIR. INDEPENDENT STUDY	C01	VAR	TBA	TBA	SILCO
SOC 498	"	C02	VAR	TBA	TBA	OSBORNE
SOC 498	"	C03	VAR	TBA	TBA	LEVINE
SOC 498	"	C04	VAR	TBA	TBA	REID
SOC 591	DIR. INDEPENDENT STUDY	C01	VAR	TBA	TBA	SILCO
SOC 591	"	C02	VAR	TBA	TBA	OSBORNE
SOC 591	"	C03	VAR	TBA	TBA	LEVINE
SOC 591	"	C04	VAR	TBA	TBA	REID

BIOLOGICAL SCIENCES

COURSE NO.	TITLE	SECT.	CR.	TIME	DAYS	INSTR.
BSC 300	HUMAN BIOLOGY	C01	05	145-350	MR	MURISON
BSC 301	BIOCHEMISTRY	C01	05	800-1005	MR	STEIN
BSC 301	" LAB	L51	02	800-1220	T	STEIN
BSC 301	"	L52	02	TBA	TBA	STEIN
BSC 302	MOLECULAR BIOLOGY	C01	05	1015-1220	MR	OKUBO
BSC 302	"	L51	02	145-605	R	OKUBO
BSC 302	" LAB.	L52	02	145-605	R	OKUBO
BSC 338	HISTOLOGY	C01	05	1015-1220	TF	MURISON
BSC 338	" LAB	L51	02	145-350	TF	MURISON
BSC 349	BIOLOGICAL FOUNDATIONS OF BEHAVIOR	C01	05	145-350	MR	CHEN
BSC 373	HUMAN ANATOMY	C01	05	800-1005	TF	SOHAL
BSC 374	FOUND. OF HUMAN PHYSIOLOGY	C01	05	800-1005	MR	CHEN
BSC 380	SPECIAL PROJECTS	C01	VAR	VARIABLE	VAR	STAFF
"	"	C02	"	"	"	"
"	"	C03	"	"	"	"
"	"	C04	"	"	"	"
"	"	C05	"	"	"	"
"	"	C06	"	"	"	"
"	"	C07	"	"	"	"
"	"	C08	"	"	"	"
"	"	C09	"	"	"	"
"	"	C10	"	"	"	"
BSC 451	HUMAN SYSTEMIC PHYSIOLOGY	C01	05	145-350	TF	CUERVO
BSC 480	SPECIAL PROJECTS	C01	VAR	VARIABLE	VAR	STAFF
"	"	C02	"	"	"	"
"	"	C03	"	"	"	"
"	"	C04	"	"	"	"
"	"	C05	"	"	"	"
"	"	C06	"	"	"	"
"	"	C07	"	"	"	"
"	"	C08	"	"	"	"
"	"	C09	"	"	"	"
"	"	C10	"	"	"	"
BSC 570	TOPICS IN TROPICAL PLANT SCIENCE	C01	05	E620-825	TR	McARTHUR
BSC 570	" " " " LAB	L51	02	1015-1220	SAT	McARTHUR

ECONOMICS

COURSE NO.	TITLE	SECT.	CR.	TIME	DAYS	INSTR.
ECO 301	ECONOMICS, MAN & SOCIETY	C01	05	1015-1220	TF	CASEY
ECO 301	"	C02	05	E620-825	TR	THOMAS
ECO 308	AGGREGATE ECO ANALYSIS	C01	05	1015-1220	MR	MONCARZ
ECO 511	APPLIED MACROECONOMICS	C01	05	1015-1220	MR	CASEY
ECO 511	"	C02	05	E620-825	MR	MONCARZ

ENGLISH

COURSE NO.	TITLE	SECT.	CR.	TIME	DAYS	INSTR.
ENG 306	FANTASY LITERATURE	C01	05	1015-1220	TF	HALL
ENG 511	EXPOSITORY WRITING	C01	05	800-1005	MR	ELKINS
ENG 511	"	C02	05	145-350	MR	WATSON
ENG 400	MOD. EUROPEAN NOVEL	C01	05	1015-1220	MR	HALL
ENG 416	WRITING FICTION	C01	05	E620-1045	W	HALL
ENG 440	INTRO. CARIB. LITERATURE	C01	05	E620-825	TR	DATHORNE
ENG 445	BASIC COMM. SKILLS	C01	05	400-605	MR	CUMMINGS
ENG 499	BLK. WOMEN WRITERS	C01	05	E620-825	MR	CUMMINGS
ENG 499	WRITING FOR BUSINESS	C02	05	E620-825	MR	WATSON
ENG 522	MOD. BRIT. NOVEL	C01	05	E845-1045	TR	DATHORNE

FINE ARTS—ART

COURSE NO.	TITLE	SECT.	CR.	TIME	DAYS	INSTR.
ARH 485	DIRECTED STUDY-ART&INVT.	C01	05	1015-1220	MR	LANGER
ARH 495	RESEARCH	C01	VAR	TBA	TBA	LANGER
ARH 595	RESEARCH	C01	VAR	TBA	TBA	LANGER
FIA 316	FIGURE DRAWING	C01	05	145-605	MR	NICASTRI
FIA 325	PAINTING	C01	05	800-605	W	COUPER
FIA 335	SCULPTURE	C01	05	E620-1050	MR	LYLE
FIA 337	JEWELRY	C01	05	800-605	TF	JACOBS
FIA 345	PRINTMAKING	C01	05	145-605	MR	NICASTRI
FIA 357	INTRO TO FILMMAKING	C01	05	145-350	MR	THYMAN
FIA 361	CERAMICS	C01	05	800-1220	MR	WYROBA
FIA 361	CERAMICS	C02	05	145-605	MR	BURKE
FIA 395	RESEARCH	C01	VAR	TBA	TBA	WYROBA
FIA 425	PAINTING	C01	05	800-605	W	COUPER
FIA 435	SCULPTURE	C01	05	E620-1050	MR	LYLE
FIA 437	JEWELRY	C01	05	800-605	TF	JACOBS
FIA 445	PRINTMAKING	C01	05	145-605	MR	NICASTRI
FIA 465	CERAMICS	C01	05	800-1220	MR	WYROBA
FIA 465	CERAMICS	C02	05	145-605	MR	BURKE
FIA 495	RESEARCH	C01	VAR	TBA	TBA	WYROBA
FIA 525	PAINTING	C01	VAR	800-605	W	COUPER
FIA 535	SCULPTURE	C01	VAR	E620-1050	MR	LYLE
FIA 537	JEWELRY	C01	VAR	800-605	TF	JACOBS
FIA 545	PRINTMAKING	C01	VAR	145-605	MR	NICASTRI
FIA 565	CERAMICS	C01	VAR	800-1220	MR	WYROBA
FIA 565	CERAMICS	C02	VAR	145-605	MR	BURKE
FIA 595	RESEARCH	C01	VAR	TBA	TBA	WYROBA

* TAUGHT THE FIRST 5 WEEKS OF THE QUARTER ONLY

FINE ARTS—MUSIC

COURSE NO.	TITLE	SECT.	CR.	TIME	DAYS	INSTR.
MUS 305	UNDERSTAND & ENJOY MUSIC	C01	05	E620-825	MR	LEEDS
MUS 335	CHORAL TECHNIQUE	C01	05	1015-1220	MR	VAGRANTIAN
MUS 385	DIRECTED STUDY	C01	1-5	HRS ARRANGED	"	FINK
MUS 395	"	"	"	"	"	"
MUS 495	"	"	"	"	"	"
MUS 585	"	"	"	"	"	"
MUS 425	ORCHESTRATION	C01	05	400-605	TF	OBATA

REGISTRATION

All students may register
whether seeking a degree or not.

Note: Special Students [non-
degree] cannot register for 600
level courses. These must be
added on a space available basis
on Change Day.

STEP 1:

Obtain a registration course
request form from the Office of
Registration and Records, Room
216, Primera Casa, or from your
academic advisor.

STEP 2:

See your academic advisor
and have the registration form
signed. Fill out the carefully the
mark-sense registration form
according to instructions on the
student advisor planning copy.

STEP 3:

Submit mark-sense
registration form, in person, to
the Office of Registration and
Records by 5:00 p.m. on May 16,
1975. Do not leave form with
faculty advisor, as your student
status must be verified when
form is submitted.

Individual Class schedules and
fee cards will be available for pick
up June 6-12 in the PC Lobby

ACADEMIC CALENDAR May 5 thru May 16

Official Registration Period

June 20

Change Day and Late
Registration

\$25 Late Fee for Continuing
Students.

June 23

Classes Start

June 30

Last day to ADD [without per-
mission of Dean].

Last day to DROP [or withdraw
from the University], with fee
refund. Last day to Late Register.

July 21

Last day to drop course without a
grade being recorded.

FINE ARTS—MUSIC CONTINUED

MUS 435	BASIC CONDUCTING	C01	02	400-605	M	McELFRESH
MUS 595	RESEARCH	C01	1-5	HRS ARRANGED	MR	VAGRANTIAN
MUP 307	COLLEGIATE CHORALE	C01	VAR	145-350	MR	McELFRESH
MUP 307	"	"	"	"	"	"
MUP 315	ORCHESTRA	C01	VAR	E700-930	T	OBATA
MUP 515	"	"	"	"	"	"
MUP 515	"	"	"	"	"	"
MUP 566	GUITAR SKILLS	C01	05	1015-1220	TF	FINK

FINE ARTS—THEATRE

COURSE NO.	TITLE	SECT.	CR.	TIME	DAYS	INSTR.
THE 305	SURVEY OF THEATRE ARTS	C01	05	1015-1220	TF	SELMON
THE 317	ACTING	C01	05	1015-1220	TF	GIBERSON
	(ELECTIVE FOR NON-ACTING MAJORS ONLY)					
THE 357	INTRO TO FILMMAKING	C01	05	145-350	MR	TWYMAN
THE 465	PLAYWRITING	C01	05	145-350	MR	TWYMAN
THE 485	PERFORMANCE & PRODUCTION	C01	1-15	TBA	TBA	SELMON
THE 495	RESEARCH	C01	1-5	TBA	TBA	GIBERSON

HISTORY

COURSE NO.	TITLE	SECT.	CR.	TIME	DAYS	INSTR.
HIS 341	MODERN RUSSIA	C01	05	1015-1220	TF	LEED
HIS 361	INTRO/AFRICAN HISTORY	C01	05	E620-825	TR	MARSHALL
HIS 397	AMERICAN FOREIGN POLICY	C01	05	800-1005	TF	KLIMMER
HIS 405	CIVIL WAR & RECONSTRUCTION	C01	05	E620-825	MR	PYRON
HIS 417	MIAMI SOCIAL HISTORY	C01	05	145-350	MR	PETERSON, S
HIS 445	WORLD WAR II, LEXER, STALIN	C01	05	1015-1220	MR	PETERSON, S
HIS 399	INDEPENDENT STUDY	C01	VAR	VAR	VAR	STAFF
HIS 499	INDEPENDENT STUDY	C01	VAR	VAR	VAR	STAFF
HIS 599	INDEPENDENT STUDY	C01	VAR	VAR	VAR	STAFF

INTERNATIONAL RELATIONS

COURSE NO.	TITLE	SECT.	CR.	TIME	DAYS	INSTR.
INT 301	FOUND'NS IN INT'L REL	C01	05	1015-1220	MR	GREENBERG
INT 312	ISSUES IN INT'L REL: VIOLENCE	C01	05	145-350	MR	GREENBERG
INT 334	WORLD REGIONAL GEOGRAPHY	C01	05	1015-1220	TF	CLEM
INT 461	INTERN'L REL/THIRD WORLD	C01	05	800-1005	TF	BEHNER

MATHEMATICAL SCIENCES

COURSE NO.	TITLE	SECT.	CR.	TIME	DAYS	INSTR.
MAS 300	INTRO TO COMPUTER PROGRAMING	C01	03	905-1005	MR	TBA
MAS 300	"	C02	03	905-1005	TF	TBA
MAS 300	"	C03	03	E845-945	MR	TBA
MAS 300	"	C04	03	E845-945	TR	TBA
MAS 301	CALCULUS I	C01	05	E620-825	MR	TBA
MAS 302	CALCULUS II	C01	05	E845-1050	MR	TBA
MAS 303	MULTIVARIABLE CALCULUS	C01	05	1015-1220	TF	TBA
MAS 304	QUANTITATIVE METHODS FOR ADMIN.	C01	05	800-1005	MR	TBA
MAS 304	"	C02	05	1015-1220	TF	TBA
MAS 304	"	C03	05	E620-825	MR	TBA
MAS 304	"	C04	05	E845-1050	TR	TBA
MAS 307	INTRO TO STATISTICS I	C01	05	1015-1220	MR	TBA
MAS 307	"	C02	05	145-350	TF	TBA
MAS 307	"	C03	05	E620-825	MR	TBA
MAS 308	INTRO TO STATISTICS II	C01	03	145-350	MR	TBA
MAS 308	"	C02	03	E620-825	TR	TBA
MAS 309	SIGNIFICANCE OF MATH	C01	05	E620-825	TR	WILLIAMS
MAS 311	INTRO TO COMPUTERS I	C01	05	E845-1050	TR	TBA
MAS 314	(COT 302) COMPUTER HARDWARE FUNDAMENTALS	C01	05	1015-1220	MR	TBA
MAS 317	ELEMENTARY MATHEMATICS	C01	05	E845-1050	TR	TBA
MAS 322	STATISTICS/MANAGEMENT&S.	C01	05	E845-1050	MR	TBA
MAS 325	DIFFERENTIAL EQUATIONS	C01	05	145-350	MR	LAWSON
MAS 365	NUMERICAL ANALYSIS	C01	05	1015-1220	TF	KRAYNEK
MAS 395	INDEPENDENT STUDY	C01	VAR	VARIABLE	STAFF	STAFF
MAS 398	SPECIAL TOPICS	C01	VAR	VARIABLE	STAFF	STAFF
MAS 415	OPERATING SYS. PRINCIPLES	C01	05	E620-825	MR	TBA
MAS 417	MINI COMP. ARCH & APPL	C01	05	E620-825	TR	COMFORT
MAS 435	STATISTICAL QUALITY CONTR.	C01	05	E620-825	MR	SHAPIRO
MAS 472	MATH TECH/OPERAT'NS RES II	C01	05	E620-825	TR	GUTSLER
MAS 495	INDEPENDENT STUDY	C01	VAR	VARIABLE	STAFF	STAFF
MAS 498	SPECIAL TOPICS	C01	VAR	VARIABLE	STAFF	STAFF
MAS 545	REGRESSION ANALYSIS I	C01	05	E620-825	TR	GHAH
MAS 580	NUMBER THEORY	C01	05	E620-825	MR	TBA
MAS 595	INDEPENDENT STUDY	C01	VAR	VARIABLE	STAFF	STAFF
MAS 598	SPECIAL TOPICS	C01	VAR	VARIABLE	STAFF	STAFF

MODERN LANGUAGES

COURSE NO.	TITLE	SECT.	CR.	TIME	DAYS	INSTR.
FRE 359	PROSE AND SOCIETY: (CONTEMP. FRENCH CULTURE)	C01	05	1015-1220	TF	GUERS-VILLATE
MOL 498	INDEPENDENT STUDY	C01	05	TBA	TBA	TBA
SPA 326	ADVANCED SYNTAX/COMP. FOR NATIVE SPEAKERS OF SPA.	C01	05	145-350	MR	YOUTI
SPA 355	INTELLECTUAL HISTORY: CUBA	C01	05	E620-825	MR	SAHCHIZ
SPA 460	CIVILIZATION II: LATIN AMERICA	C01	05	1015-1220	MR	MENDOZA
SPA 479	CULTURAL PROBLEMS	C01	05	1015-1220	MR	MENDOZA
SPA 497	STUDIES IN BILINGUALISM: METHODS/TEACHING SPA. "S"	C01	05	400-605	MR	TBA
	EDU GRANT STD. NATIVE SPEAKERS	C01	05	E620-825	MR	TBA
	EDU GRANT STUDENTS, NATIVE SPEAKERS	C01	05	E620-825	MR	TBA

INTENSIVE LANGUAGE

COURSE NO.	TITLE	SECT.	CR.	TIME	DAYS	INSTR.
FRE 311	BEGINNING INTEN. LANG. NON-NATIVE SPEAKERS	C01	05	800-1005	TF	TBA

INTENSIVE LANGUAGE CONTINUED

FRE 312	INTERMED I INTEN. LANG. NON-NATIVE SPEAKERS	C01	05	800-1005	TF	GUERS-VILLATE
FRE 313	INTERMED II INTEN. LANG. NON-NATIVE SPEAKERS	C01	05	1015-1220	MR	TBA
ITA 311	BEGINNING INTEN. LANG. NON-NATIVE SPEAKERS	C01	05	E620-825	TR	TBA
ITA 312	INTERMED I INTEN. LANG. NON-NATIVE SPEAKERS	C01	05	800-1005	MR	TBA
SPA 311	BEGINNING INTEN. LANG. NON-NATIVE SPEAKERS	C01	05	145-350	TF	BOUMA
SPA 311	"	C02	05	E620-825	MR	MENDOZA
SPA 311	"	C03	05	1015-1220	MR	BOUMA
SPA 312	INTERMED I INTEN. LANG. NON-NATIVE SPEAKERS	C01	05	1015-1220	TF	BOUMA
SPA 312	"	C02	05	E620-825	TR	TBA
SPA 313	INTERMED II INTEN. LANG. NON-NATIVE SPEAKERS	C01	05	800-1005	MR	CROSBY

PHILOSOPHY & RELIGION

COURSE NO.	TITLE	SECT.	CR.	TIME	DAYS	INSTR.
PHI 326	PHILOSOPHIES OF EDUCATION	C01	05	800-1005	TF	KONKEL
PHI 411	CONTEMPORARY PHILOSOPHIES	C01	05	1015-1220	MR	KOVACS
PHI 435	PHILOSOPHY OF DEATH	C01	05	E620-825	MR	KOVACS
REL 315	JESUS IN HIS & OUR TIMES	C01	05	1015-1220	TF	HUCHINGSO
REL 401	GOD, WORLD & PROCESS	C01	05	E620-825	TR	HUCHINGSO

PHYSICAL SCIENCES—CHEMISTRY

COURSE NO.	TITLE	SECT.	CR.	TIME	DAYS	INSTR.
CHE 302	ORGANIC CHEMISTRY I	C01	05	1015-1220	MR	HERRIOTT
CHE 302	"	L51	02	145-605	M	KELLER
CHE 302	"	L52	02	800-1220	M	KELLER
CHE 306	CONTEMPORARY CHEM II	C01	05	E620-825	MR	SHELDON
CHE 306	"	L51	02	800-1220	M	TBA
CHE 306	"	L52	02	E620-1050	R	TBA
CHE 312	QUANTITATIVE ANALYSIS	C01	03	400-605	T	WILLIAMS
CHE 312	"	L51	02	E620-1050	T	WILLIAMS
CHE 312	"	L52	02	145-605	M	PARKER
CHE 491	INDEPENDENT STUDY	C01	VAR	TBA	TBA	STAFF
CHE 492	"	C01	VAR	TBA	TBA	STAFF
CHE 493	"	C01	VAR	TBA	TBA	STAFF

GEOLOGY

GEO 301	ENVIRONMENTAL GEOLOGY	C01	05	E620-825	TR	HAUKHASSE
GEO 491	INDEPENDENT STUDY	C01	VAR	TBA	TBA	STAFF
GEO 492	"	C01	VAR	TBA	TBA	STAFF

PHYSICS

COURSE NO.	TITLE	SECT.	CR.	TIME	DAYS	INSTR.
PHY 301	PHYSICS W/CALC I	C01	05	400-605	MR	MORGANSTERN
PHY 303	PHYSICS W/CALC. III	C01	05	145-350	MR	MORGANSTERN
PHY 305	PHYSICS W/O CALC I	C01	05	1015-1220	TF	MINTZ
PHY 306	PHYSICS W/O CALC II	C01	05	145-350	TF	MINTZ
PHY 301	JR. PHYSICS LAB I	L51	02	800-1220	M	TBA
PHY 302	JR. PHYSICS LAB II	L51	02	145-605	M	TBA
PHY 303	JR. PHYSICS LAB III	L51	02	145-605	M	TBA
PHY 491	INDEPENDENT STUDY	C01	VAR	TBA	TBA	STAFF
PHY 492	INDEPENDENT STUDY	C01	VAR	TBA	TBA	STAFF
PHY 493	INDEPENDENT STUDY	C01	VAR	TBA	TBA	STAFF

ENVIRONMENTAL SCIENCE

ENV 491	INDEPENDENT STUDY	C01	VAR	TBA	TBA	STAFF
ENV 492	INDEPENDENT STUDY	C01	VAR	TBA	TBA	STAFF

POLITICAL SCIENCE

COURSE NO.	TITLE	SECT.	CR.	TIME	DAYS	INSTR.
POS 326	THEORIES LATIN AMER. POL.	C01	05	145-350	MR	AYBAR
POS 343	CONSTITUTIONAL LAW/POWERS	C01	05	800-1005	TR	VOLCANSEK
POS 348	INTERNATIONAL ORGANIZATION	C01	05	145-350	TF	BOOTHOD
POS 407	INDEPENDENT STUDY	C01	05	VAR	VAR	STAFF
POS 408	ALTERNATIVE POL. FUTURES	C01	05	145-350	MR	GUTTLER
POS 421	GOV. & POLITICS OF U.S.	C01	05	1015-1220	TF	CHAI
POS 431	VIOLENCE AND REVOLUTION	C01	05	800-1005	MR	KESLERMAN
POS 441	POL. OF AUTHORITY/ANISM	C01	05	1015-1220	MR	GUTTLER
POS 444	POLITICAL IDEOLOGIES	C01	05	E620-825	MR	WELSON
POS 461	CHINA, JAPAN, KOREA	C01	05	E620-825	TR	CHAI
POS 518	INDEPENDENT STUDY	C01	05	VAR	VAR	STAFF

PSYCHOLOGY

COURSE NO.	TITLE	SECT.	CR.	TIME	DAYS	INSTR.
PSY 300	INTRODUCTORY PSYCHOLOGY	C01	05	145-350	TF	JACEWITZ
PSY 305	INTRODUCTORY EDUC. PSYCH	C01	05	1015-1220	TF	PARKER
PSY 321	PSYCHOLOGY OF RACISM	C01	05	1015-1220	MR	DUNN
PSY 330	INTRODUCTORY DEVELOPMENTAL PSYCH	C01	05	E620-825	TR	FINLEY
PSY 420	THEORIES OF PERSONALITY	C01	05	400-605	MR	KURTINES
PSY 435	CHAR & CHARACTER DEV'T	C01	05	1015-1220	MR	DUNN
PSY 461	ABNORMAL PSYCHOLOGY	C01	05	1015-1220	TF	CROWH
PSY 471	SMALL GROUP BEHAVIOR	C01	05	E845-1050	MR	KURTINES
PSY 473	SOCIAL MOTIVATION	C01	05	E620-825	MR	MORAN
PSY 480	CHILD PSYCHOPATHOLOGY	C01	05	145-350	TF	CROWN
PSY 480	PSYCH OF CONSCIOUSNESS	C02	05	145-350	MR	JACEWITZ
PSY 531	DISORDERS OF LANG IN CHILDHOOD	C01	05	145-350	MR	TIKOFSEY

TAUGHT FIRST SIX WEEKS ONLY

SCHOOL OF BUSINESS

COURSE NO.	TITLE	SECT.	CR.	TIME	DAYS	INSTR.
BIA 301	FINANCIAL ANALYSIS	C01	05	E620-825	T/F	JURGENSEN
	"	C02	05	E845-1050	M/W	STONE
	"	C03	05	0145-0350	M/W	MELCH
	"	C04	05	1015-1220	T/F	TBA

SCHOOL OF BUSINESS CONTINUED

BIA 302	OPERATIONS MGMT POLICY	C01	05	1015-1220	M/R	HERIADEZ
		C02	05	E620-825	T/R	SILBEY
		C03	05	E845-1050	M/W	HERPET
BIA 303	PRINCIPLES OF MARKETING	C01	05	1020-1225	M/R	VOGEL
		C02	05	1020-1225	T/F	RIBLETT
		C03	05	1020-1225	T/R	MAGEE
		C04	05	E620-825	M/W	SEATON
BIA 305	QUANT. METHODS FOR ADMIN.	C01	05	0800-1005	M/R	SHAPIRO
		C02	05	1015-1220	M/R	SHAPIRO
		C03	05	1015-1220	T/F	MILLS
BIA 306	MGMT INFO SYSTEMS	C01	05	E620-825	T/R	FRISCH
		C02	05	0800-1005	T/F	TAGGART
		C03	05	E620-825	M/W	STIMMONS
		C04	05	E620-825	T/R	TAGGART
BIA 307	ACCTG'S. FOR PLAN. & CONTR.	C01	05	1015-1220	T/F	FAIR
		C02	05	E620-825	T/R	MUEZ
		C03	05	E845-1050	T/R	RODRIGUEZ
BIA 309	ORGANIZATION MANAGEMENT	C01	05	1015-1220	T/F	ALTMAN
		C02	05	0145-0350	M/R	FRIDAY
		C03	05	E620-825	M/W	DORSETT
		C04	05	E845-1050	T/R	DORSETT
BIA 312	BUSINESS & ITS ENVIRON.	C01	05	1020-1225	M/R	WOLFPE
		C02	05	0800-1005	T/F	NICHOLS
		C03	05	E620-825	M/W	HUGHES
BIA 408	MANAGERIAL DEC. MAKING	C01	05	1015-1220	T/F	TURNER
		C02	05	E620-825	M/W	HEBERT
BIA 496	POLICY ANALYSIS	C01	05	0800-0605	M/R	DESSLER

SCHOOL OF HEALTH & SOCIAL SERVICES

DIETETICS AND NUTRITION

COURSE NO.	TITLE	SECT	CR	TIME	DAYS	INSTR.
D11 305	FOOD AND THE CONSUMER	C01	04	0620-1050	W	CURRY
D11 503	NUTRI EDN IN THE COMMUNITY	C01	04	0800-0450 0800-0450 0800-0450 0800-0450	JUNE 26 JULY 3 JULY 17 JULY 24	EASTON
D11 530	DIET IN DIS PREY & TREAT	C01	04	0620-1050	M	EASTON
D11 560	WORKSHOP IN DIET & NUTR	C01	VAR	ARR	ARR	EASTON
D11 550	IND STUDY IN DIETETICS	C01	VAR	ARR	ARR	EASTON
D11 695	SUPERVSD FLD STUD IN DIET	C01	05	ARR	ARR	CURRY
D11 698	THESIS IN DIETETICS	C01	05	ARR	ARR	EASTON

CRIMINAL JUSTICE

COURSE NO.	TITLE	SECT	CR	TIME	DAYS	INSTR.
CRJ 301	NATURE & CAUSES OF CRIME	C01	05	0800-1005 M/R		MARQUES
		C02	05	0620-0825 M/W		HAMMERSLEY
CRJ 303	PROS & JUD POLICY MAKING	C01	05	0800-1005 T/F		SNOW
		C02	05	0620-1050 R		ADJUNCT
CRJ 312	PERSONNEL SEL,DEV.& CONT	C01	05	1015-1220 T/F		RASMUSSEN
		C02	05	0845-1050 M/W		HAMMERSLEY
CRJ 401	CORRECTIONAL PHILOSOPHY	C01	05	1015-1220 M/R		MILLER
		C02	05	0620-1050 T		ADJUNCT
CRJ 402	METH OF CRIM JUS RESEARCH	C01	05	0800-1005 M/R		MILLER
		C02	05	0400-0605 M/R		WILBANKS
CRJ 403	INSTITUTIONAL CHANGE	C01	05	0620-0825 T/R		CRAWLEY
		C02	05	0620-1050 W		RASMUSSEN
CRJ 430	CRIM JUST & THE CONSTITU	C01	05	1015-1220 T/F		SNOW
CRJ 421	PROBATION AND PAROLE	C01	VAR	VAR	VAR	MARQUES
CRJ 440	FIELD INTERNSHIP	C01	VAR	VAR	VAR	SNOW
CRJ 495	DIRECTED READINGS	C02	VAR	VAR	VAR	HAMMERSLEY
		C03	VAR	VAR	VAR	WILBANKS
CRJ 496	INDEPENDENT RESEARCH	C01	VAR	VAR	VAR	CRAWLEY
		C02	VAR	VAR	VAR	RASMUSSEN
		C03	VAR	VAR	VAR	MILLER
CRJ 500	DIRECTED RESEARCH	C01	VAR	VAR	VAR	CRAWLEY

HEALTH SCIENCE

COURSE NO.	TITLE	SECT	CR	TIME	DAYS	INSTR.
HSM 304	HLTH & SOC SERV DEL SYST	C01	05	0800-1005 T/F		ORTIZ
HSM 390	INDIVIDUAL STUDY	C01	05	ARR	ARR	JAVIS
HSM 400	MGMT FOR HLTH PROFESSIONS	C01	05	1015-1220 T/F		WHITE
HSM 401	INFO SYS	C01	05	0800-1005 M/R		CROWLEY
HSM 480	ISSUES & TREN HLTH CAR DEL	C01	05	1015-1220 M/R		JAVIS
HSM 495	LEG ASPTS & LEGIS HLTH CAR	C01	05	0620-1050 M		LEWIS

MEDICAL TECHNOLOGY

COURSE NO.	TITLE	SECT	CR	TIME	DAYS	INSTR.
MOT 451	PRACTICUM "A"	L51	06	0800-0900	MTW	WAIN
MOT 452	PRACTICUM "B"	L51	06	0800-0900	MTW	WAIN
MOT 484	LABORATORY MGMT	C01	02	0620-0825	T	WAIN
MOT 404	CLINICAL CHEMISTRY LAB	L51	04	0800-1220	MTW	ZITIS

NURSING

COURSE NO.	TITLE	SECT	CR	TIME	DAYS	INSTR.
NUR 350	NUR IN EVOL HLTH CARE SYS	C01	05	0620-1045	T	MOONEYHAN
NUR 420	NUR ROLE IN PRO OF CHANGE	C01	05	1015-1220	T/F	KNOWLES
NUR 440	INVS OF NURSING PROB.	C01	05	0800-1220	R	KNOWLES
NUR 406	EVOL OF NURSING PRACTICE	C01	05	0800-1220	W	THARPE
NUR 504	ISSUES & PROB IN NUR ADMIN	C01	05	0620-1045	M	THARPE

OCCUPATIONAL THERAPY

COURSE NO.	TITLE	SECT	CR	TIME	DAYS	INSTR.
OCT 460	FIELD WORK EXPERIENCE	C01	12	VAR	VAR	ANTONSON
OCT 461	FIELD WORK EXPERIENCE	C01	12	VAR	VAR	ANTONSON
OCT 500	INDEPENDENT STUDY	C01	05	VAR	VAR	ANTONSON
OCT 550	SPECIALIZED FIELD STUDY	C01	04	VAR	VAR	ANTONSON

PHYSICAL THERAPY

COURSE NO.	TITLE	SECT	CR	TIME	DAYS	INSTR.
PHT 324	PROSTHETICS & ORTHOTICS	L51	03	0100-0500	M	JONES
		L52	03	0100-0500	R	JONES
PHT 354	REHABILITATION	L51	02	0900-1200	M/R	JONES
		L52	02	0900-1200	T/F	JONES
PHT 334	CLINICAL CLERKSHIP II	L51	04	0100-0400	TW	JONES

SOCIAL WORK

COURSE NO.	TITLE	SECT	CR	TIME	DAYS	INSTR.
SOW 301	HIS PHI PERSP SOC WELF	C01	05	8:00-12:20	T	SMITH
SOW 306	SELF-AWARE MODIF SERV	C01	05	8:00-12:20	M/F	MEYER
		C02	05	0620-1050	W	HATTEN
SOW 307	SOC WORK PRAC SKILL I	C01	05	1:45-6:05	W	GORDON
SOW 308	FIELD EXPERIENCE I	C01	10	TBA	TBA	BACARISSE
SOW 401	COMMUNITY RESEARCH	C01	05	10:15-12:20	M/R	PENDERGRASS
SOW 407	SOC WORK PRAC SKILL II	C01	05	8:00-12:05	M/R	SOLOMON
SOW 408	FIELD EXPERIENCE II	C01	10	TBA	TBA	BACARISSE
SOW 420	FIELD EXPERIENCE III	C01	10	TBA	TBA	BACARISSE
SOW 429	SENIOR PROJECT	C02	VAR	VAR	VAR	BACARISSE
		C03	VAR	VAR	VAR	SMITH

SOCIAL WORK CONTINUED

SOW 495	INDIVIDUAL STUDY	C05	VAR	VAR	VAR	HATTEN
		C06	VAR	VAR	VAR	PENDERGRASS
		C07	VAR	VAR	VAR	SOLOMON
		C08	VAR	VAR	VAR	MEYER
		C09	VAR	VAR	VAR	GORDON
		C10	VAR	VAR	VAR	BACARISSE
		C11	VAR	VAR	VAR	SMITH
		C12	VAR	VAR	VAR	HATTEN
		C13	VAR	VAR	VAR	PENDERGRASS
		C14	VAR	VAR	VAR	SOLOMON
		C15	VAR	VAR	VAR	MEYER
		C16	VAR	VAR	VAR	GORDON
SOW 436	DIRECTED READINGS	C17	VAR	VAR	VAR	BACARISSE
		C18	VAR	VAR	VAR	SMITH
		C19	VAR	VAR	VAR	HATTEN
		C20	VAR	VAR	VAR	PENDERGRASS
		C21	VAR	VAR	VAR	SOLOMON
		C22	VAR	VAR	VAR	MEYER
		C23	VAR	VAR	VAR	GORDON

COURSE NO.	TITLE	SECT	CR	TIME	DAYS	INSTR.
SOW 531	INDEPENDENT RESEARCH	C02	VAR	VAR	VAR	BACARISSE
		C03	VAR	VAR	VAR	SMITH
		C04	VAR	VAR	VAR	HATTEN
		C05	VAR	VAR	VAR	PENDERGRASS
		C06	VAR	VAR	VAR	SOLOMON
		C07	VAR	VAR	VAR	MEYER
		C08	VAR	VAR	VAR	GORDON
		C09	VAR	VAR	VAR	BACARISSE

*Taught during first 5 weeks of quarter

HOME ECONOMICS

COURSE NO.	TITLE	SECT	CR	TIME	DAYS	INSTR.
HED 401	CHILD DEVELOP: LATER CHILD	C01	05	0620-1050	M	MILLIKEN
HED 595	HUMAN DEVELOP PRACTICUM	C01	02	0900-0500	MTWRF	JO GREEN
					JN 14	
HME 406	MGMT OF PERSONAL & FAM RES	C01	03	0145-0500	T	MILLIKEN

HOME ECONOMICS PROGRAM

COURSE NO.	TITLE	SECT	CR	TIME	DAYS	INSTR.
HEE 305	HOME ECO EDUCATION PLAN	C01	05	0620-0825	T/R	CRABTREE
HEE 596	WORKSHOP HOME ECONOMICS	C01	05	0830-0500	MTWRF	CRABTREE
					JN 14	
		C02	03	0830-0500	MTWRF	CRABTREE
					JN 25-27	
CLT 538	TAILORING MENSWEAR	C01	05	0800-1220	MTWRF	OGLE
					JN 20	
CSM 497	SPECIAL TOPICS IN HOUSING	C01	03	0800-1100	W	TBA
HED 401	CHILD DEVELOP: LATER CHILD	C01	05	0620-1050	M	MILLIKEN
HME 406	MGMT OF PERS & FAM RES	C01	03	0145-0500	T	MILLIKEN
HED 595	HUMAN DEVELOP PRACTICUM	C01	02	0900-0500	MTWRF	JO GREEN
					JN 14	

SCHOOL OF HOTEL, FOOD & TRAVEL

COURSE NO.	TITLE	SECT	CR	TIME	DAYS	INSTR.
HFM 301	INTRO MGMT ACC HOSP IND	C01	05	1015-1220	T/F	MONCARZ
HFM 304	HOSP ACCTG INFO SYST	C01	05	1015-1220	M/R	WEBSTER
HFM 310	INTRO COMM FOOD SERV PROD	C01	05	0800-1020	W	PRENTISS
HFM 311	VOLUME FEEDING MGMT	C01	05	0145-0245	W	PERRY
HFM 316	RESTAURANT MGMT	C01	05	0400-0620	M/R	GREGG
HFM 320	OPERATIONS CONTROL	C01	05	0800-1015	M/R	ILVENTO
HFM 327	INTRO TO HOSP MGMT	C01	05	0145-0250	T/F	MARZELLA
HFM 323	INTERNSHIP	C01	05	TBA	TBA	MARZELLA
HFM 329	ADVANCED INTERNSHIP	C01	05	TBA	TBA	MARZELLA
HFM 331	MARK FOR HOSP INDUSTRY	C01	05	0800-1015	T/F	MARZELLA
HFM 339	HOSP PROPERTY MGMT	C01	05	0145-0350	M/R	DARBY
HFM 300	INDEPENDENT STUDY	C01	1-5	TBA	TBA	MARSHALL
HFM 300	INDEPENDENT STUDY	C01	1-5	TBA	TBA	MARSHALL
HFM 300	ENTER OF HOSP FIN STATE	C01	05	0145-0350	T/F	MONCARZ
HFM 310	INSTITUTIONAL FOOD SERV	C01	05	0620-0830	T/R	PRENTISS
HFM 315	PRICING PLAN MGMT	C01	05	1015-1220	T/F	PERRY
HFM 385	PROFIT PLAN MGMT	C01	05	0145-0350	M/R	WEBSTER/ILVENTO
HFM 500	INDEPENDENT STUDY	C01	1-5	TBA	TBA	MARSHALL
HFM 501	INDEPENDENT STUDY	C01	1-5	TBA	TBA	MARSHALL
HFM 502	INDEPENDENT STUDY	C01	1-5	TBA	TBA	MARSHALL
HFM 535	ADV. FOOD SERVICE OPERATION	C01	05	TBA	TBA	HURST
HFM 630	HOSP. IND PROJECT	C01	05	TBA	TBA	LATTIN
TTM 304	TECH AGENCY OPERATIONS	C01	05	1015-1220	M/R	HUSE
TTM 306	CREATIVE TOUR PACKAGING	C01	05	0620-0830	M/W	HUSE
TTM 309	INTERNSHIP	C01	05	TBA	TBA	DARBY
TTM 310	INTERNSHIP	C01	05	TBA	TBA	DARBY
TTM 312	SOCIOLOGY OF LEISURE	C01	05	1015-1220	M/R	HUSE

ADVISEMENT

Students without advisors should contact their departmental offices so an advisor assignment can be arranged.

Individual Class schedules and fee cards will be available for pick up June 6-12 in the PC Lobby

SELECTION OF COURSES

During registration, students will select the specific section of a course which best fits their time schedule. Every attempt will be made to schedule the exact section(s) requested. However, if a requested section(s) is full (no seats left), the student will be scheduled if possible in an open section meeting in the time period checked under "Alternate Schedule Preference." This means that an attempt will be made to schedule all alternate sections on either Monday - Thursday or Tuesday - Friday in the daytime; or Monday - Wednesday or Tuesday - Thursday in the evening thereby giving the student, if possible, a two-day schedule.

Note: If one of the daytime alternate schedule preference times is checked, courses will not be scheduled in the evening even though they may be offered only at that time. Also if an evening alternate schedule time is checked, courses will not be scheduled during the daytime.

Individual Class schedules and fee cards will be available for pick up June 6-12 in the PC Lobby

LATE REGISTRATION AND CHANGE DAY

Failure to register will result in a student having to follow late registration procedure between the hours of 9:00 a.m. and 8:00 p.m. on Change Day, June 20.

Questions regarding the registration procedure will be answered by the Office of Registration and Records. Please call 552-2361.

All courses, times, and instructors are subject to change without notice.

\$25

LATE REGISTRATION FEE POLICY

All Continuing Degree seeking students must register during the Official Registration period

May 5-16

in order to avoid a \$25 Late Registration Fee.

Carter describes British criminal justice

WM. HARRY PRIVETTE
Feature Editor

Chief Inspector Michael Carter of the London Metropolitan Police spoke to criminal justice students at FIU on April 16, giving a brief organizational breakdown of the London Metropolitan Police structure and touching on areas of mutual interest in the police system.

"Your American police forces, though fragmented, are drawn together at the top by your criminal justice system. Our system is compartmentalized, almost a caste system. In this respect you are light years ahead of us."

Inspector Carter explained that the National Police Force consists of 41 different forces which serve England and Wales. There is an average of 2,000 personnel in each force with the



exception of the London force, which is the largest, consisting of 21,000 officers, 11,500 civilians, 2,000 traffic wardens, and 2,500 special constables.

Although it is a national police

force with a great degree of control, the Inspector said, the system is a mixture of local authority and central government, with the bulk of power being centralized.

"We are not answerable to Government either central or local as your American police forces are," Carter explained.

On the lighter side, Inspector Carter commented on American TV. "You have so many TV stations here in America. When I turn it on in my hotel room I go round all the channels—like a new toy. On every one there is on or about to come on an advertisement. They are often

better than the program.

In Britain we have one commercial channel. The big difference is that we know when the ads are coming.

The weather forecasts are flippantly sacrilegious with their puns and humor in comparison with the rather staid and formal forecasters in Britain where the

(Continued on Page 12)

Earnest Talk

(Continued from Page 4)

curtain requires us to do set changes right in front of the audience: that had some bearing on the selection of the play. And the fact that it might be interesting for student designers, which we are using in both set and costume, also was a factor.

GT: Is this the first play that's been done at FIU that really involves set changes?

JH: As I recall, it really is; I wasn't here for WHAT THE BUTLER SAW, I can't remember whether that has a set change or not. I think it doesn't. I think we've used unit sets—something of that nature, previously. I think we've always used plays which lent themselves to single unit sets, controlling audience attention through use of lights.

GT: It seems that you have a strikingly good cast.

JH: I think so. I think it's a good cross section, it's kind of a homogeneous group. I think that we've got some very good acting talent here at FIU, and that we're able here to use a lot of it. Another thing about (selecting) EARNEST is that there are a lot of small roles in it, but a lot of good ones: they're interesting and funny in so far as they exist in the particular scenes.

GT: You've got as large a crew as I remember having seen in an FIU production; granting you have a much more complicated set...

JH: A well designed set, by Dale Sanmiguel...

GT: You also have better than average people (in Lynn Mitchrony and Timm Hamlett) for

A.D. and Stage Manager.

JH: Our department is beginning to build to the point now where we don't have to have everybody doing everything. We were able to make some selections so that some people who were interested in working in given technical areas were able to do that. We've got a pretty responsible group of people in charge of the various areas.

GT: How does it feel to be back behind the scenes again, after being in the spotlight?

JH: Oh, well, fine. I find acting very interesting—whether I'm doing it or watching it—I find directing very interesting, too. It's two different aspects (of theatre) both of which are interesting and terrific learning experiences.

GT: FROG POND, the last thing you directed, as far as styles of plays is obviously greatly different. Has your general experience been as wide as this? Have you done EARNEST-type plays before?

JH: Yes, I've played in more period plays than I've directed, because I've worked in various summer repertory theatres since 1962. I have done a great deal of period comedy, a lot of Restoration, a lot of French farce, all the way up to contemporary stuff.

I have directed various periods of plays, though never this particular one. So that my experience here has been more in acting than in directing. But I feel that I have a general background that will hold me in good stead.

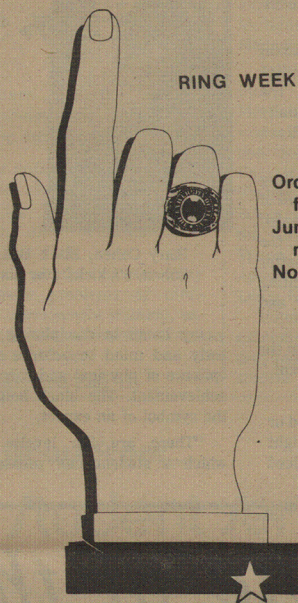
GT: You've done Mrs. Malaprop...

JH: In THE RIVALS, I've been in THE COUNTRY WIFE; participated in productions of SCHOOL FOR SCANDAL, SHE STOOPS TO CONQUER; I also had six lines in THE WAY OF THE WORLD! At Asolo in 1962, played third maid from the left.

GT: All in all, you've had quite a background in comedy, classical comedy and period pieces. THE IMPORTANCE OF BEING EARNEST is obviously in good hands. Thanks for your time in letting us talk to you, and good luck.

DO A FINGER A FAVOR...

RING WEEK APRIL 21-25



Order now for delivery before graduation! Juniors, don't wait, order now! No deposit required

FIU Bookstore

ABORTION ADVICE & GUIDANCE, INC.

[a non-profit organization]

SEX AND HEALTH EDUCATION

* Birth Control

Exams, Individual counseling, prescriptions, information Classes

* Sex Education

Individual and group discussions

* Pregnancy Test Pap Smears

* Breast and GYN Exams

* VD Test and Information

Dade 895-1274
Broward 525-2360

Thursday Nights
6:30-9 p.m.

THE LADIES CENTER
12550 Biscayne
North Miami

* Abortion
Counseling

Pants
or
Slacks

3 pair
\$1.80

Close to FIU

Quality
1-Hour
Cleaners

SW 8th St. & 97th Ave.
Bird Rd. & 95th Ave.

Sports

Martial arts:

Strength for the body and soul

BOBO BERRY
Sports Editor

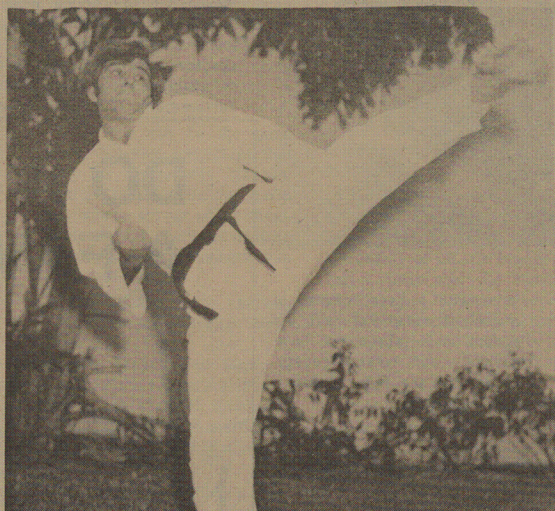
In English history, a man of valor and dignity who excelled in the arts of combat and social amenities was rewarded with the title of Knighthood. This designation let it be known to all that he was a man not only of honor but also of great fighting ability. This was true in Japan where the same type of men were called Samurai. The prowess and title of each rank commanded respect.

Today, man's desire to excel in a martial art, for discipline and self defense still exists. The highest achievement he initially strives for is to become a "Black Belt."

"But as his training progresses, he should be aware of a stronger calling," revealed FIU's Coach Kogi Sugimoto, "the molding of himself into a better person, not only in his fighting ability, but also in dignity and honor."

This traditionally has been the goal of the martial arts student," said Sugimoto.

The Black Belt is an award or honor given to the modern knight or samurai who has sacrificed



Barry Cohen, Black Belt, demonstrating a 'Side Thrust Kick'. Cohen, 6'1" kicks over his head.

many hours in disciplining his body and mind to achieve the epitome of physical and mental achievement. The black belt is the symbol of an expert.

"There are ten levels by which a student can measure

their progress," Sugimoto said. "I give tests four times a year enabling them to earn a higher degree or belt."

"A black belt is not a gift, but a goal, a symbol of one's great effort," added Sugimoto.

The achievement of the black belt often is a lifetime goal, and takes years to obtain.

"It took me 16 years to obtain my black belt," said FIU student, Barry Cohen, who works out three times a week.

"Often Kung-fu is mistaken for Karate," informed Cohen. Basically, karate and kung-fu refer to systems of unarmed combat developed in the Orient. However, there are many different styles of both.

"The physical difference in their styles are quite easy to determine. Karate movements are sharp and hard, while Kung-

fu movements are soft and fluid," explained Cohen.

The martial arts are fast becoming the mental, physical, and spiritual exercise of thousands all over the world. And with the crime rate becoming higher each year, many are interested in its value as a means of protection.

Those interested in Karate instruction are invited to become a member of the FIU club, which is the largest on campus. Classes are held Wednesday and Friday evenings at 6:30 in the Tursair building, behind the tennis courts.

IMPORTANT CHANGE IN LIBRARY POLICY!!

As of April 14, 1975, Students must present a validated cashier's receipt to borrow material.

INTERNATIONAL WEEK IS COMING!

MAY 12-16

Athlete of the Week



BOBO BERRY
Sports Editor

New Zealand's gift to the FIU tennis team comes in the form of Steven Temple, who has played in the number one position all season.

Because of the "Sunblazers" difficult schedule, Temple has been paired against numerous nationally ranked netters. "Temple has had a lot of pressure because he has had to contend with the better players," said Coach Bill Flemming, commenting on Temple's 10-12 record.

The junior political science major, who speaks fluent German and French, hopes to work with the Foreign Service when

his tennis days are over.

However, that should not be for some time. This summer Temple will play the European circuit, hoping to iron out some of the problems that have plagued him this year.

"Temple lost some matches that he shouldn't have," explained Flemming, "because he too often lets himself get down

and his concentration isn't what it should be."

"He is capable of playing much better tennis than he has demonstrated this season. I feel that the experience of playing on the Circuit this summer will be a valuable opportunity to concentrate on his weaknesses, and, hopefully, he will come back stronger," added Flemming.

INTERCONTINENTAL

THE PROFESSIONAL TRAVEL SERVICE

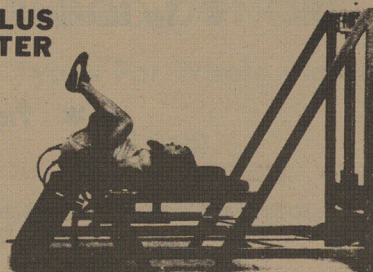
ECONOMY & QUALITY TRAVEL

3117 P DE LEON, CORAL GABLES PHONE (305) 443-1561

NAUTILUS CENTER

3333
Rice St.
(Grove)

444-6843



Flexibility

As a Result of Exercise

Proper exercise is capable of increasing both muscular strength and flexibility to a marked degree regardless of sex or physical potential. The effect remains the same. Nautilus training with full-range exercises produces maximum results in minimum time.

Student & faculty discount w ID

MI HABANA RESTAURANT

BEST CUBAN SANDWICHES & SPANISH FOOD IN TOWN

9646 Coral Way Shopping Center



some of
The best Food you ever tasted!

2 eggs, ham, toast & coffee 79c

Lunch & Dinners from \$1.49

Think you're PREGNANT?

Come in early for a **FREE TEST**

you have the **RIGHT TO CHOOSE**

safe, simple **ABORTION**

by licensed gynecologists

\$155 NO EXTRA CHARGES NO REFERRAL FEES

\$155 includes: Pregnancy test, abortion, all medication, Rho-Gam, all lab work, Pap smear, V.D. test, birth control counsel, follow-up exam, free birth control pills.

woman centered clinic
confidential

for information, counseling, appointments

Call

587-4033 in Broward

947-5515 in Dade

WOMANS AWARENESS, INC

4491 Stirling Road, Ft. Lauderdale, Fla. 33319



STATE CHAMPIONSHIP WRESTLING TEAM. Bottom Row: left to right: Mike Szabo, Tom Bussman, Dave Kitchen, Ozell Bemby, Rick Schave; 2nd row: Mark Huit, Jerome Baker, 3rd row: Henry Sergery, John Woodward, Robert Georger, Dennis McLeod, Tony Indainio, Iver Bork, Mark Buchanan.

This Week In Sports.....

BASEBALL

April 25, 1975

April 25, 1975

TENNIS

April 25, 1975

May 2, 1975

GOLF, MEN

April 28-29, 1975

Univ. of South Florida

Univ. of South Florida

3:30 (A)

1:30 (A)

Florida State Univ.

Jacksonville U

2:00 (H)

2:00 (H)

Tournament of Champions

Key Biscayne CC

Labor Institute

(Continued from page 3)

These are only a few of the topics which might be discussed. The specific needs and desires of the client determine the direction of conferences or seminars.

One of the major functions of the institute is to help organizations in establishing their own educational programs.

Programs are also conducted nationally and internationally. Recently the institute held a two-day school in the Bahamas. The seminars were organized with the hope of developing a union education program. This was the first time the institute offered its services outside the U.S.

The Institute for Labor Research Studies provides educational services with or

Jackson

(Continued from Page 1)

Children are being born deformed, blind, and retarded by the mercury ingested by their parents before they were born, Jackson states.

Manchester, England, is an industrial city which uses coal in its manufacturing processes. The burning of this coal produces sulphur dioxide which goes into the atmosphere and is carried by the wind northward to Scandinavia.

The sulphur dioxide is then brought back to earth by rain which has a high acid content because of the pollutants. This acidic water is killing fish in the streams and rivers of Sweden, Norway, and Finland.

If all this seems far away, a quick glance at the Miami River brings it much closer.

Anyone interested in seeing the river restored to a state of relative cleanliness are urged to contact the Friends of Amanda The Manatee which meets in UH 315, at 12:30 p.m., every Tuesday.

without a college credit. An external degree program, leading to a Bachelor of Science

degree, with concentration in labor and manpower studies is offered.

WOMEN'S REFERRAL

ABORTIONS . . . are now legally available in Florida. For your health and well-being you should be referred to a facility which is specially designed for this procedure.



FREE PREGNANCY TESTS

667-1049

MANEJE ADELANTE

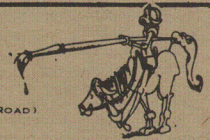
Los hábitos de ver son importantes en un chofer. El debería mirar muy lejos en frente del vehículo para observar situaciones potencialmente peligrosas. Durante la noche, y si Ud. está manejando a un alto grado de velocidad Ud. no puede sobrepasar las luces del frente.

Safety is a family affair.

DRAFTING
GRAPHICS
SUPPLIES
PICTURE
FRAMING

REX ART
SUPPLIES

2263 S.W. 37TH AVE. (DOUGLAS ROAD)
445-1413 MIAMI, FLORIDA 33145



you'll **JUMP** at these

Big Discounts!

Save up to \$3.00!

Records

Top artists!

Major labels!

Hundreds of records! Classics included!

Many, many selections in this special purchase.

FIU Bookstore
STARTS TODAY

DON'T MISS THIS SALE!!

Come early for best selection!



JOHN McLAUGHLIN OPINION POLL

	yes	no
Do you think we had an election?	<input type="checkbox"/>	<input type="checkbox"/>
Was it fair?	<input type="checkbox"/>	<input type="checkbox"/>
How should votes be counted?		
machine	people	computer
First name	phone #	

Thanks John McLaughlin

DROP IN BOX AT THE BOOKSTORE PLEASE!

EVENTS

TODAY—APRIL 24

FIU Hosts General Membership meeting	12:20 pm	UH 210
Jet Nero Band	12:30 pm	Forum
Federation of Cuban Students meeting	12:30 pm	UH 315
Sailing Club meeting	12:30 pm	DM 110
Students of the Americas Ass'n. meeting	12:30 pm	UH 213W
SGA movie—	12:30 pm	
"Nicholas & Alexandra"	8:30 pm	UH 140
Interact Club	12:30 pm	UH 316
Career Planning	5:30 pm	UH 316
Slimnastics	7:00 pm	Tursair Bldg.

FRIDAY—APRIL 25

Feminine Theatre Group	12:00 pm	Forum
Student Graduation Recital	12:30 pm	UH 140
Lecture "South East Asia: The Evolution of American Involvement"	12:30 pm	UH 213W
International Week Committee meeting	12:30 pm	UH 317
Karate Club meeting	3:30 pm	Tursair Bldg.

SATURDAY—APRIL 26

Dade County Journalism Day Seminar	9:00 am/ 3:00 pm	U of M Student Union
------------------------------------	---------------------	-------------------------

MONDAY APRIL 28

* Seidman & Seidman recruiting	9:00 am/ 5:00 pm	UH 330
Folk dancing	12:15 pm	UH 210
Florida Vet. Assoc. meeting	12:20 pm	UH 316
** Voter Registration Drive	12:30 pm	UH Main Floor
Career Planning	5:30 pm	UH 316
Film "Oedipus Rex"	6:30 pm	UH 210

TUESDAY—APRIL 29

Biology Club meeting	12:30 pm	UH 317
SGA Movie—	12:30 pm	
"Executive Action"	8:30 pm	UH 140
Friends of Amanda meeting	12:30 pm	UH 213E
Student Psychological Ass'n. meeting w/ Dade Co. Ass'n. for Retarded Citizens	12:30 pm	UH 213W
Perspectives—"American Labor & the Present Crisis"	12:40 pm	Col. Am. Dining Rm.
Burroughs Welcome		UH 330
Judo Club meeting	4:00 pm	Tursair
ACEI meeting	4:30 pm	UH 210
Biology Club meeting	5:45 pm	UH 317
Fencing Club meeting	7:00 pm	Long Bldg.
Slimnastics	7:00 pm	Tursair Bldg.

WEDNESDAY—APRIL 30

* Lever Bros. recruiting	9:00 am/ 5:00 pm	UH 330
* J.C. Penney Co. recruiting	9:00 am/ 5:00 pm	UH 330
SGA Senate meeting	11:00 am	UH 150
Faculty Senate meeting	2:00 pm	UH 150
Karate Club meeting	3:30 pm	Tursair Bldg.

* Career Planning and Placement Notes: The following employers will visit the campus to interview prospective candidates during the week of May 2-May 9: Connecticut Mutual Life Insurance, United Farm Workers, Jackson Byrons, First Federal Savings & Loan, Jordan Marsh, IBM.

** The Young Democrats are sponsoring a Voter Registration Drive April 28 through May 2 at 12:30 pm on UH Main Floor.

Inspector Carter

(Continued from Page 5)

weather is almost a national past time."

When asked to comment on his own career as a policeman the Inspector describes himself as a sort of 'anti-hero.' 'I've always wanted to be heroic and have a big razor slash; I've got a razor slash but I would have to take my trousers off to show you. I chase criminals and end up being bitten by a police dog.'

Inspector Carter cannot be stereotyped as the typically typical English policeman as portrayed on television; the aggressive young man who eats fish and chips out of a newspaper, drops his H's and nicks all the villains, good, solid, salt of the earth but a bit thick.

Nor is he the Dixon of the Doc Green image. The old Victorian father figure, very kindly to old ladies and helps children across the street.

Inspector Carter demonstrates an awareness of all socio-political and economic prac-

ticalities that make up a police and criminal justice system.

Carter was appointed to the Metropolitan Police in 1955, promoted to Sergeant in 1960, and to Station Sergeant in 1962. In 1963, he was promoted to Inspector, and in 1967 to Chief Inspector.

He holds his Bachelor's Degree of Social Administration from the University of Hull, Yorkshire, and a degree in Criminology.

Inspector Carter has served as a patrol officer, vice investigator, undercover operative in London, and as a training school instructor. He is currently assigned to the police college as a management specialist.

In addition to being a member of the International Commission of Jurors, British Section, Inspector Carter is an associate member of the British Institute of

Management and a member of the section of programmed learning and educational technology.

STUDENTS!
WE HAVE COMPLETE INFORMATION ON:

- LOWEST AIR FARES WITHIN THE U.S.A.
 - LOWEST AIR FARES TO EUROPE AND ASIA
 - STUDENT AND SINGLES TOURS
 - EURAILPASS
 - ADVENTURE EXPEDITIONS
 - FOREIGN STUDY
- CALL US TODAY!
Across the Universe
Student Travel Bureau
8930 Bird Road 223-6472

M.C.A.T.
D.A.T.

Complete Review Course
Extensive Preparation
Taught by Specialists.

624-0163

Sheldon N. Rose
Educational Center

CLASSIFIEDS

PERSONALS

MICHAEL MAGENHEIM wishes to thank all those who voted for him in the recent election. Because of the overwhelming turnout of voters, I will split my salary among those voters.

Graduate School on Miami Beach now accepting applications for Fall Term 1975. Sixty Credit hours in Medical, Legal and Psychological Hypnosis. Non-Profit. State Board Approved. Tel. 932-2233 Ext. 1365.

Close Victory Garden Light—See Art at UH 212-A.

Female roommate to share comfortable home in South Miami. No smokers. Call Joan 271-2651. \$100.

SUE Sorry about that but I mean it MIKE

DOES MRS. DALLY HAVE A LOVER? Find out. Attend the play presented in DM 150 Wed., Thurs., and Friday. (April 30, May 1-2) 12:30 pm.

Persons interested in seeing a Law-school formed at FIU. Call J. Fenerwerth at 264-4992.

Young woman needs female roommate to share apt. on Hibiscus Island. Eve. at 5:30. 534-6886, wk. anytime.

Need ride from Carol City (near Calder Race-track) M & Thurs. at 8:30 a.m. Call Mem 522-2151.

Students interested in seeing Law School at FIU contact N. Martinez. 821-9356.

Occupational Therapy Club has been established. All interested students welcome. For information call Andrea 665-9902.

Room and Board for responsible person in exchange for after-school child care. Evenings 271-7938.

AUTOS

1974 Gremlin X (Levi Decor) excellent condition. Fully loaded, automatic, AC, AM-FM radio, luggage rack. \$3,000 or best offer. Call Jackson 350-4611 days or 522-8483 evenings.

1971 Ford Mustang, A-C 302V8. Best offer! Call 226-4864.

'69 Toyota Corona automatic, AC, radio. Good condition \$495. Days - 732-6715. Eves. - 753-2938.

Want to buy a fine car in mint condition? One with new tires, wheels, black lacquer with gold stripes paint-job and 525 h.p.? Try a 1971 OLDS 442. W-30 with 26,000 miles on it—Asking \$3,000 Call 443-9892 after 4:00.

For sale—1970 MGB A-1 condition. Got to see it to believe it. Metallic Green am-fm radio, wire wheels. Call Dennis Ext. 2179.

'70 Chevrolet van, custom paint, mags, interior. New tires, stereo, refrigerator, low mileage \$2100. Call 271-6551.

FOR SALE

For Sale: two twin beds; springs, mattresses and frames. Attaches to make king-size bed. Must Sacrifice. \$35 each. Call 666-6202 anytime.

4-Sale: T-shirts with logos, decals, transfers. For Groups, Frats, Individuals, \$22-0459 or 633-3168.

Cartridge Stereo for sale. Electrical Phase 44. Best offer over \$12. Call 274-6897.

For sale: Baldwin Organ, console Becker car radio, am-fm like new 621-6887 before 2:30 pm.

For Sale: Slightly used funeral wreaths. In good shape. Preserved by Minnesota cold. Contact Michael G. Merkin or Raymond Dill 552-2118.

For Sale: Zenith Circle of Sound Stereo system; contact Claude 693-0339.

SHURE MICROPHONE Unidyne 111 w-cord. Jack \$60. Pete or Joe 261-7199.

5 ft Weber Baby Grand Piano, new keys, walnut finish, damp chaser, bench tuned and delivered \$1000 279-3757.

Available Immediately: Sublet 1 Bedroom, 1 Bath apt. 2 minutes from FIU. 552-7483 after 6 p.m.

Apt. for sublet, summer, Dadeland area luxury 2-Bedroom, 1 1/2 bath, 2-balconies, furnished or unfurnished. 661-7038

23 inch racing-touring bike Swiss-made Mondia 531 tubing all Campy components. \$225. Call 856-6199 after 5:00.

For sale: Queen size Waterbed, pedestal, frames, liner, bag, foam pad. Color—Brown \$90. Call Mike 443-8556.

4 U.S. slotted 7 1/2 mags & 31 tires for sale. Will fit Ford trucks & Jeeps. Great condition. Call 443-9892 after 4:00.

TRAVEL

Jamaica—Beautiful and uninhibited—Fantastic Offer, 7 nights, 8-days \$162—includes transportation, accommodations \$36-9798 or 751-3833. \$25 deposit due before April 22.

EUROPE, ISRAEL, ASIA, SOUTH AMERICA. Student discounts your round. Student Air Travel Agency, Inc. 4228 First Avenue, Tucker, Georgia 30084. tel. (404) 934-6660.

EMPLOYMENT

Advertising Salesman wanted. Call 552-2118. Earn Cash in your spare time.

Wanted: Guitar Partner. Acoustic Duo some harmony. Bar music. Loggins & Messina ETC. Can find work Call 445-5534

College Campus Representative Needed to sell Brand Name Stereo Components to Students at lowest prices. Hi Commission. No investment required. Serious Inquiries ONLY! FAD COMPONENTS, INC. 20 Passaic Ave. Fairfield, New Jersey 07006 JERRY DIAMOND 201-227-6814

Car Parkers. Flexible hours. must have a car and a phone. Location in Coconut Grove. Contact the CP&P Department for details.

Industrial Chemicals Salesperson, 4 1/2 hr. day, commission basis. Contact CP&P for details.

Structural Draftsman, one year experience in structural concrete required, full time position. Contact C+&+ for details.

Attention students of Psychology, Special Ed. Phys. Ed., etc. The Miami Society for Autistic Children is in need of volunteers. Stipend available or minimum wage. Call 624-9671 ext. 142.

Spanish Tutor for a student. 3.5 hrs. per week. Contact CP&P Dept., UH330.

Honest mechanic needed to diagnose and repair Chrysler Auto air conditioning. Call 274-8697.

SERVICES

HATE TO TYPE? Let a professional type it for you quickly, neatly, cheaply. Call 233-4927 anytime.

Babysitting in my home flexible 8 am to 2 pm. Pay negotiable 2.3 or 5 days a week. Now until June 9. Minutes from campus. Call pm 233-2487.

ACU-STAT SECRETARIAL SERVICE, INC. 15420 N.W. 27 Place, Miami, Florida 33054, 681-4176. Professional Medical and Business typing and transcription done. Free pickup rates of \$1.00 per page general typing. Slightly larger fee for more detailed work. Term papers, case work, thesis, manuscripts, theatrical scripts, curriculum, articles, resumes, book reports.

Typing Services. Fully Experienced in Thesis Typing will pick up & deliver. Call after 6:30 p.m. 531-4452.

Services: Babysitting, children ages 4 yrs. and up, evenings, on regular basis. Call 274-8016. Close to FIU.