

7-18-1974

The Good Times, Vol. 2, No. 19, July 18, 1974

Florida International University

Follow this and additional works at: https://digitalcommons.fiu.edu/student_newspaper

Recommended Citation

Florida International University, "The Good Times, Vol. 2, No. 19, July 18, 1974" (1974). *PantherNOW - Student Newspaper*. 983.

https://digitalcommons.fiu.edu/student_newspaper/983

This work is brought to you for free and open access by the Special Collections and University Archives at FIU Digital Commons. It has been accepted for inclusion in PantherNOW - Student Newspaper by an authorized administrator of FIU Digital Commons. For more information, please contact dcc@fiu.edu.

The Good Times

Florida International University

VOLUME 2 NO. 19
THURSDAY, JULY 18, 1974

Student Government

Who is a member?

MARK S. MORGAN
Associate Editor

"Point of order!" was the cry most often heard at the Student Government Senate Meeting, Friday, July 5th, in University House room 212.

As Senator John Sands demanded at one point, "I have been calling 'point of order' for 15 minutes — why have I not been recognized?"

WHO WAS TO be recognized turned out to be the meeting's major issue. Even while the roll-call was being taken, a half-hour long shouting match developed over whether nine graduated SGA senators could still hold office.

Obadiah Ferguson, one of the nine senators who has graduated, was asked prior to the meeting if he still considered himself senate chairman.

"**I DON'T CONSIDER,**" he replied, "I am the chairman of the Student Government Association — according to the constitution and according to the students of FIU. I was elected by them, I should be kicked out by them . . . if the students feel they don't want me. There is a normal process in the constitution that provides for that — that's nothing new."

In the previous regular senate meeting of June 28th, Consularie George Kenney took another view. He read a memo directed by him to Coordinator of Student Activities, Lillian Kopenhaver. According to the SGA constitution, he said, "one must be a student of FIU to participate in the SGA thereof." In his opinion, those who have graduated and aren't enrolled during the summer quarter may not be a part of student government.

DEAN SANDRA CLARK, in a memo of her own, agreed: "It is quite clearly spelled out (in the SGA constitution) that you must be a 'student' to participate in any way in Student Government."

"As defined by the State of Florida," she stated further, "once you graduate from a University you are no longer a student even though you may be pending such further status by admission to a graduate program."

NEITHER OF THESE memos nor the constitution was discussed in any depth at the senate meeting Friday the 5th — the "point of order" day. Whatever was lacking in content, however, was made up in style. It was a style comprised of ash-tray banging (Obadiah Ferguson and Beverly Harding), shoe pounding (Joe Kaplan), bellowing (Associates Joe Kaplan and John Sands) and walking out, only to return later (Associate Sands and Consularie George Kenney — who remarked that he was "going to the bathroom").

Two days before that meeting, Consularie Kenney had said, "Obie (Ferguson) is not the chairman of the Student Government Association and will not be."

HE WAS RIGHT so far as the "point of order" meeting was concerned, but the permanent occupant of the senate chair has not been finally decided. Francisco Rivas, elected Associate Chairman, who chaired the meeting, may retain the chair. Or Obie may once again preside.

The SGA Constitution is very explicit as regards the student status of the Associates (senators elected to represent each of the 6 of FIU's colleges). The constitution says, in Article V, Section One: Qualifications, subsection A, that an Associate "Shall be a student with a valid Identification Card from Florida International University."



One of these two men, Obie Ferguson (left), or Francisco Rivas, is SGA chair.

Obviously, all SGA Associates without valid ID Cards are now *former* Associates.

THE CONSTITUTION is not nearly so explicit when it comes to Presiding Board members. Article IV, Section one, subsection A, on the qualifications of the Presiding Board, states: "All students at Florida International University are eligible to run for the Presiding Board with the exception of members of Faculty and Administration." That is all it says on the subject.

It would seem, then, that according to the constitution you don't have to be a student to be Chairman of the Student Government Association of Florida International University.

"**WHAT THE HELL** you talkin' about? You think some wino off the street can be president (sic) of SGA?!" said Consularie George Kenney in response to this idea.

That is, of course, an extreme example, but it does vividly portray the nature of the problem.

"The Problem" became a problem, according to Consularie Kenney, on

June 8th when he was an usher at commencement.

"**WAIT A SECOND,**" he thought (as he said later), "these people aren't students anymore."

"And therefore," he went on, "since they weren't students anymore and weren't paying student activities fees — they shouldn't be allowed to participate in student government."

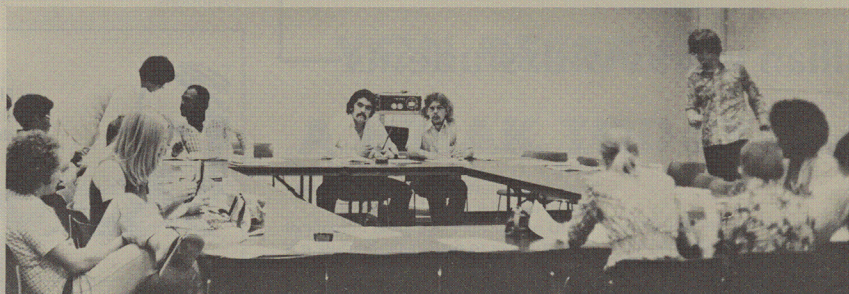
Be that as it may, none of this is mentioned in the SGA constitution.

"I realize that the constitution does not say that you are no longer a student after you've graduated," remarked Kenney, taking a more relaxed view of the "non-student chairman" idea than he had previously. "However, I was elected to interpret the constitution and, therefore, the spirit of the document."

ASSOCIATE JOE KAPLAN agreed, "As a general rule, by definition in the constitution the consularie's interpretation must stand."

"In this particular case — because of the emotions involved," Kaplan also

(continued on page 3)



Senators congregate around meeting table, waiting for a quorum.

New fee schedule starts fall quarter

Mary-Jeanette Taylor
Editor

Several bills were introduced into the Florida State Legislature this past session in an attempt to revise fee schedules. All of them failed to pass or were not acted upon. The Board of Regents then decreed that their original recommendation (and one of the bills that was not acted upon) would go into effect this fall in State Universities.

Under the new schedule students registering for undergraduate level courses will pay \$13 per credit hour; graduate level courses will be assessed at \$16.50 per credit hour.

The new fee schedule gives rise to two uncertainties. First, what is a full time student? This is a determination which must be made for students seeking financial aid. Secondly, what constitutes **graduate** level? Is the delineation

made between 400 and 500 level courses? In most Universities a 500 level course is considered graduate level, yet in FIU's College of Arts and Sciences there are no masters' programs. Will then a student attempting a baccalaureate in English be charged \$16.50 for taking a 500 level course? These are questions that must be resolved prior to fall quarter registration.

The schedule insures that each student will be assessed proportionately and activity fees will be drawn from both full and part time students. In the past \$34.50 from each full time tuition was put into the Activity fund; no contribution was made by part time students.

Another problem is created for the Registrar. Every time a student drops a course a refund will have to be made.

This will result in an enormous amount of paperwork and it is likely that refunds will be delayed.



"Neither rain, nor sleet . . . nor the mud on May 26 stops FIU's progress. President Perry shovels mud at ground breaking for Library — Auditorium."

Military establishment examined

Is the American military establishment an efficient instrument that serves to protect life, liberty and the pursuit of happiness, or has it become a dangerous, ever-expanding parasite that's threatening American society?

These are among the various questions a new course to be offered at FIU this fall will examine. Entitled "The American Military Establishment," it will be taught by J. Arthur Heise, Assistant Professor in the Public Administration Program.

"I don't care how you view the American military — whether from the

perspective of a hawk, a dove or the hybrid that's come to be known as the 'dawk' — I think it behooves all of us to take a long, serious look at the Pentagon and all that goes with it before we either condemn it or praise it," said Heise.

The military is worthy of serious study, he said, "if for no other reason than that you, your parents and every other taxpayer in the country since World War II has spent more than an estimated \$1.7 trillion on defense. That's right," he added for emphasis, "\$1.7 TRILLION, not \$1.7 billion.

"But for some reason," Heise continued, "we've shunned serious, detached and continuing examination on most campuses of what is not only the largest bureaucracy we have, but the only one that, officially, legally specializes in the use of violence and mass destruction."

Heise said the aim of the 500-level course is to make it possible for FIU students to take a penetrating look at the American military establishment. "In addition," he said, "the course will be a perfect vehicle to learn a great deal about how a very large, very complex bureaucracy operates in our political system."

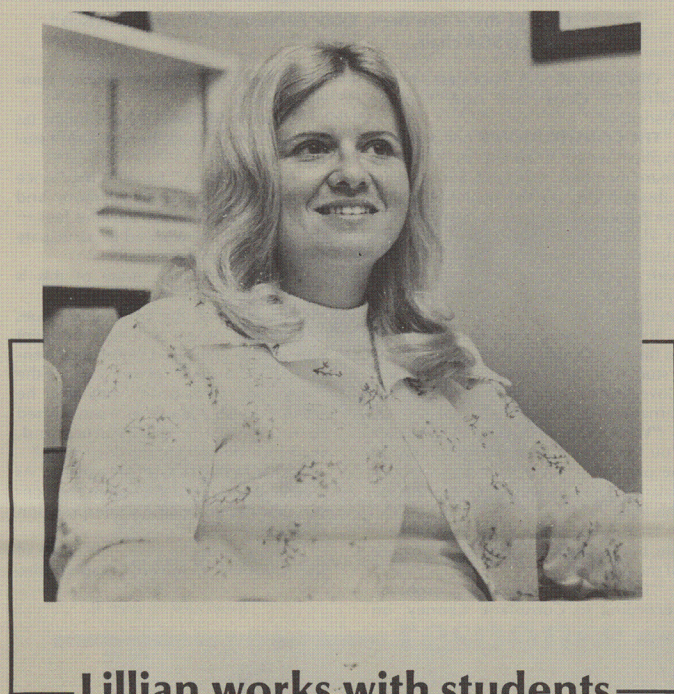
Heise said he has taken a serious interest in the American military for over ten years, first during a three-year stint in the Air Force, then as a newsman

— with a Buffalo, N.Y., newspaper and the Associated Press in West Berlin — and then as a freelance writer.

In addition to a variety of articles, which have appeared in publications ranging from the *New York Post* to *The Nation*, he is the author of a book that appraises the country's three major service academies, *The Brass Factories*.

His interest in the military eventually caused him to return to graduate school to work in a doctorate in Public Administration from Syracuse University's Maxwell School, with special emphasis on military organizations.

He is currently engaged in research examining the Pentagon-media relationship.



Lillian works with students

MARY-JEANNETTE TAYLOR
Editor

I have a friend. And so do you. As Coordinator of Student Activities, it is Lillian Kopenhaver's job to be a friend of every student at FIU. My questions and those of other students fill Lillian's day.

How can I start an organization? What is the procedure for funding a club activity? I know a man who gives lectures — is there any one who will sponsor him? Where can my club hold a bazaar and how do we set it up? Lillian has the answers to these and other questions that students may pose. Her whole job, however, is hard to define.

"I'm just kind of here and students find me when they need me," says Lillian. What they find is a storehouse of information. Moreover, they find an individual, in a sometimes alienating Administration, that is totally student oriented. Her lifelong desire has been to work with students and up until she came to FIU she taught journalism.

Lillian found a new challenge in Student Activities and an opportunity to implement an unusual concept: tying student activities to educational goals.

"There should be an affinity between the two," Lillian says. This is an uncommon concept in universities; most are overrun with social clubs, fraternities and sororities. Lillian points out that most organizations at FIU are concerned with educational and other useful goals.

Lillian is fascinated by FIU's student population. They are older and more mature than the average student body and in them she finds a tremendous source of ideas. Students can have a

large influence on the way things are done at FIU, she says; they need only learn how to use it. That is an important part of the educational process.

FIU offers students a great number of opportunities to participate because it is a new and innovative university.

"I really feel very strongly that every student should get involved," says Lillian.

And many do. A committee of six students drawn from SGA worked with Lillian on University House. Together they planned uses for rooms and ordered furniture. Lillian also coordinated the move from Primera Casa to the new building.

Lillian's most important function is probably to serve as a channel between the students and the Administration. But she perceives her function as being an aid to the students.

"It's amazing how many people around here don't know where to go to implement ideas," Lillian laments. "If they find their way to University House 211 we can help them find what they need."

FIU studies H-bomb effects

Dr. Walter Goldberg, assistant professor in the Department of Biological Sciences at Florida International University, has been awarded a grant from the Atomic Energy Commission to study the uptake of radioactive iodine by corals of the Central Pacific Ocean. He will conduct seminars this September at Eniwetok, an atoll in the Marshall Islands.

Eniwetok atoll is the former test site of a U S hydrogen bomb explosion.

Dr. Goldberg's studies will involve determining the growth rate of coral based upon the rate at which they incorporate radioactive iodine into their skeletons.

One of the implications of this is the effect incorporated radioactive iodine could have on humans who may eat fish or other organisms that feed on such coral. Iodine is one of the principal fallout products generated by nuclear explosions.

There is a difference!!!

PREPARATION FOR:

- MCAT
 - DAT
 - LSAT
 - GRE
 - ATGSD
 - CCAT
 - CPAT
 - FLEX
 - ECFMS
 - NAT'L MED BDS
- Over 35 years of experience and success
- Small classes
 - Voluminous home study materials
 - Courses that are constantly updated
 - Make-ups for missed lessons

For complete information call or write:

Branches in Major Cities in USA
stanley h. kaplan
EDUCATIONAL
CENTER LTD.
TUTORING AND GUIDANCE SINCE 1939
1675 E. 16th St., Brooklyn, N.Y. 11229
(212) 336-3300



A non-profit organization dedicated to help you.

WOMEN'S REFERRAL

ABORTIONS . . . are now legally available in Florida. For your health and well-being you should be referred to a facility which is specially designed for this procedure.

FREE PREGNANCY TESTS
(305) 667-1049
Women's Referral
Group
24 HR. SERVICE

BLOOD DONORS ALL TYPES

\$12.00

BY APPOINTMENT ONLY!
CALL 885-4955

BLOOD SERVICES OF GREATER MIAMI, INC.

77 Hood Square
Miami Springs, Florida
HOURS: MON.-FRI. 9:00-6:00 P.M.

PERRINE BRANCH ALL TYPES \$15.00

CALL 251-6240
BY APPOINTMENT ONLY!
17635 South Dixie Highway
HOUR: MON.-FRI. 8:30-6:00 P.M.

Anthony's Pizzeria

FIU's Italian Kitchen

Open for Lunch 11:30

CLOSED TUESDAY

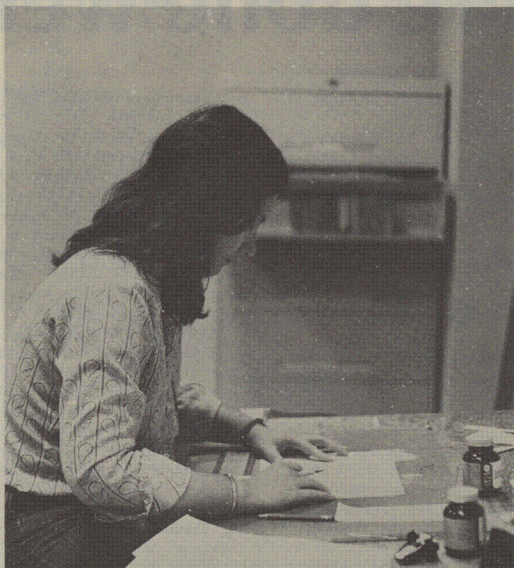
Scilian Pizza

our speciality

Coral Park Center

9770 S.W. 8th St.

226-9381



Griz Rodriguez, editor of the FIU student handbook, is making the layouts for the university's first handbook. Ms. Rodriguez and co editor Joe Kaplan, have compiled the first handbook exclusively for students. The handbook, entitled *The Source*, is available to students during Registration for Fall Quarter — July 29 through August 16 and during Change Day, Sept. 20.

Student Government

(continued from page 1)

said, "the decision of the consularie should be taken before the entire senate, even those included on 'the list'." ("The List," on George Kenney's memo, of ten senators he claimed had graduated.)

This, apparently, was what Associate John Sands was trying to do in the meeting — force the senate to consider the question.

IN HIS OPINION, "Some students in SGA are . . . being thrown out on tech-

nicalities and some things are invalid that have to be straightened out."

The question remains, how is it going to be straightened out? Will taking it before the senate body do any more good than the meeting Joe Kaplan called "a complete display of childish emotion" on Friday July 5th?

Maybe outside arbitration would help, as some have suggested.

Or maybe not. As George Kenney said:

"I've got a feeling this matter is going to go to the Board of Regents."

Language program has high student response

ALBERT HOSKIN
Staff Writer

The Intensive Language Program reflects much of the change that has been wrought in the educational processes of the University. The performance of the program has well fulfilled the department's role in language instruction, as well as the international commitment of this university.

These new programs have been in effect from the first classes, when 150 students enrolled, to Spring quarter, when enrollment rose to 550.

THESE PROGRAMS were developed and carried out by the Director of Intensive Language, Maida DiSalvo.

"The basis of the program is that the instructors are native speakers, and they are young and dynamic," says Ms. DiSalvo. There is also increased co-operation between professors, as well as a greater student-professor relationship.

The teaching method stresses oral participation and translation, rather than reading and repetition. These methods have evolved from a departmental study of Peace Corps language instruction, and European teaching methods, which include Israeli Ulpan — the method of instruction on Israeli Kibbutzim. These methods of instruction were combined by the Intensive Language Department to create an invigorated program. This

program, professors assert, elicit added student response and participation.

EXCITING possibilities arising from the department's studies include a student exchange program presently being negotiated between FIU and universities in Brazil, Colombia, and Martinique, to mention a few. Other ideas include a text compiled for spanish-speaking medical personnel in the Miami area, accompanied by an on-site course to learn more English. Another text is being compiled to teach students Latin-American and local Spanish.

Ms. DiSalvo believes that the most important element in the program is the professor.

"He must be in complete command of the language he is teaching, and aware of the cultural differences between that language and the student's native tongue," says Ms. DiSalvo.

WHEN QUESTIONED about university funding, Ms. DiSalvo was hesitant to respond, as were others in the department, who apparently anticipated repercussions from higher levels. Questions on internal problems yielded the same response.

The Intensive Language Department, however, anticipates continuing progress and looks forward to additional improvements.

Nurse fills order

ARLEAN JENKS
Staff Writer

Off the third floor corridor of Primera Casa, next to the elevator, is room 304. This is actually a small suite of rooms called the Health Services, an integral and important department of FIU.

There is a big beam scale in the front room. People are always coming in to weigh themselves. Directly past the scale is a pleasant looking office. Robin Oakie works there. She is one of the two full time registered nurses who staff the Health Services. Her shift starts at eight in the morning and ends at five in the afternoon. The office is then taken over by Pat Gonzalez who is there from five until nine in the evening. Whenever classes are in session from Monday until Friday, this office is open.

Blonde haired and blue eyed, Ms. Oakie stands a slender five feet seven, and smiles a lot. She never wastes time. She received her nursing diploma at Bronson Hospital in Kalamazoo, Michigan; she expects to receive her bachelor's degree in Health Science at FIU in August.

She has been in Florida for 12 years and came to work at the University when it opened in 1972. Besides working all day and attending classes at night, in her "spare time" Robin works every other weekend at Doctor's Hospital. Her recreation is bike riding and being a member of the FIU bowling team.

Among her accomplishments, she holds a real estate license. She worked at Youth Hall as a nurse for nine years and has had the experience of practicing general nursing in Delaware, Mississippi, South Carolina, Indiana and Michigan.

In the Health Services clinic, she sees and does a little bit of everything. Students, faculty, staff and sometimes visitors pass through her department in a fairly steady stream all day. Those with upper respiratory infections, colds, headaches, abdominal pains, minor injuries and many emotional problems come to her for attention, for medication and for empathy.

In between all of this, the nurse must handle all student and athletic insurance, and keep a record of every patient she treats. Her small quiet world in PC 304 has a kitchen with a refrigerator and two treatment rooms, one with a hospital bed in it.

A school nurse has to have several qualities and abilities to enable her to cope with situations that arise every day:

She has to be a good listener.

She must be able to evaluate physical and emotional problems.

She must be able to counsel.

She has to know how and where to refer people to agencies and physicians.

She must really like people.

That's a big order . . . Robin Oakie knows how to fill it.


**WATCH FOR
HEMISPHERES**
THE INTERNATIONAL
LITERARY MAGAZINE
OF FIU.

FREE! — to all students,
faculty and staff.

THE MAGAZINE WILL BE
DISTRIBUTED AT ALL
BUILDINGS ON CAMPUS.

Get your copy first.

Distribution date — July 22.



FLORIDA VETERANS ASSOCIATION

FIU CHAPTER

IS HOLDING A PICNIC AT THE VETERANS
ADMINISTRATION HOSPITAL,
NW 12 AVE. AND 13 ST.
ON AUGUST 4, BETWEEN 11 AM & 5 PM

COME AND GIVE SOME CHEER TO
THE PATIENTS AT THE HOSPITAL.
CO-SPONSORED BY SGA

Summer Shakespeare done well

Romeo & Juliet

wbs
Entertainment Editor

Miami is not an area conspicuously known for its fondness for Shakespeare — so that Ivan Kivitt's annual Shakespeare Festival is most always something to look forward to.

Sponsored by the Tourist Development Authority of Miami Beach, "Shakespeare by the Sea" this year features the most romantic of Shakespeare's tragedies, ROMEO AND JULIET and his most blithe comedy, A MIDSUMMER NIGHT'S DREAM, in repertoire.

A DIFFICULT play because of its relative lack of depth of characters and occasionally unrealistic situations, ROMEO AND JULIET is nonetheless one of the most lyrical plays in the English language. Kivitt's production, while successful in many aspects, is not fully able to capture the lyricism of the language. Its successes are its action and comedic sequences and several striking performances.

Although we were not fully taken with the Juliet of Leslie Useden, her handling of the poetry was one of the best aspects of her performance. She has a tendency to become rather too hysterical at times and to shriek a bit, but her overall acting was creditable.

Her Romeo, Daniel Mason, was even better—probably because, for all its action, Romeo is a perceptibly easier part. But, like Miss Useden, he brings charm and vitality to his role. Like the Zefferelli film, this production emphasizes the

youth of its protagonists to such a degree that the beauty of their love affair is lost in a haze of puppy-dog adolescence.

BEST OF THE supporting cast is undoubtedly director Kivitt as Friar Laurence, though Don Mabey is a fine and fiery Tybalt. Indeed, when Tybalt is killed scarcely half-way through, much of the liveliness vanished from the production. Ironically, it is most often the character of Mercutio — Romeo's friend and idol — who sparks most productions, but here we found the performance of Louis Gallo too broad and rambunctious and not at all well-spoken. And one can quarrel with the yente like Nurse or Nora Dorn — much closer to the Matchmaker of FIDDLER ON THE ROOF than to Juliet's playful, zesty confidant.

Diane Davis and Ronald Shelley make an attractive duo as Juliet's parents and read their parts well, but here the kudos end. Virtually the rest of the cast is mediocre and one feels that the players are spread far too thin; one character, Romeo's servant has been cut and his lines given to another, Romeo's cousin Benvolio. Both the cutting and the thinness tend to make one feel a bit uneasy; the more familiar one is with the play, the more this feeling is aggravated.

STILL, SIMPLY to see Shakespeare being performed live on stage is such a treat that many of one's complaints are quieted. One must extend congratulations to Ivan Kivitt for his work with this play and for his overall dedication to his

art and that of the greatest playwright in the English language.

Shakespeare-by-the-Sea is located at the North Shore Community Center at 72nd and Collins. Romeo and Juliet will play on Tuesday evenings at 8:00 thru July 26.

A Midsummer Night's Dream

BENTLEY GRIFFITHS
Entertainment Writer

"And the Gods were with us!" intoned Director Ivan Kivitt bringing his audience into an evening of ethereal and frolicsome activities. Such was the setting under moonlit sky at North Shore Community Center for the Shakespeare-by-the-Sea production of Shakespeare's A MIDSUMMER NIGHT'S DREAM.

Mr. Kivitt, also director of the Merry-Go-Round Playhouse, has been entertaining Miami audiences continuously with a variety of performances for some ten years. Once again he has come upon a solid idea: a Summer Shakespearian repertory company. He is noted for being one of the few directors in this area to give struggling young artists a chance at the "big stuff".

HIS CURRENT attempt works well—due to a strong and cohesive cast. The play revolves around three groups: three loving couples, a band of rustic workmen (and aspiring actors) and the mystical fairies of the surrounding countryside.

One of the production's finest scenes finds two of the sets of lovers in their

best example of interplay. Mis-mangled efforts on the part of Puck — mischievously played by Danny Mason — bring the lovers to a state of utter confusion and a rollicksome fight. This scene owes much to the forceful talents of the actresses involved: Diane Davis as Hermia and Karen Elswick as Helena. This entire scene is viewed by the invisible King of the Fairies, Oberon — elegantly played by Don Mabey — who eventually sets things right.

ANOTHER well-handled scene provides the climax of the play; this is the "play within the play" provided by Peter Quince (Noah Kirsch) and his rustic actors. Judging from the reaction of the audience, this is probably the finest piece of interplay in the entire show, highlighted by the Nick Bottom of Douglas Leland, who "acts" Pyramus and Ron Berliner's Francis Flute "playing" Thisbe.

Though at times the actors lost the language in their antics — though language can be superfluous at such moments, anyway — the entire production was immensely entertaining. And, one can't help mentioning the beauty of the costumes — another fine example of the artistry of Don Mabey. So often theatrical productions ignore the conventions of color and simplicity, while, in this case, the designer has presented a fine blend of beauty and continuity.

Those theatregoers who so often scoff at "unprofessional" productions will delight in an evening of entertainment as provided by Shakespeare, by the sea.

A MIDSUMMER NIGHT'S DREAM will play through July 27 at 8 p.m. at North Shore Community Center.



YOU RENT

AN APARTMENT

YOU KNOW

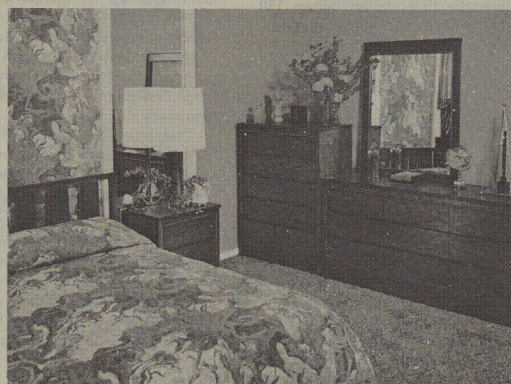
IT COSTS LESS TO RENT UNFURNISHED

Rent Unfurnished & Rent Furniture

FROM:

Swingles Furniture Rentals

8582 BIRD ROAD 223-5751
SPECIAL STUDENT RATES





FALL

QUARTER

CLASS

SCHEDULE

FEES

Fees are assessed based on the level of each course attempted. They are set annually by the Board of Regents and the Legislature. The fees established for 1974-75 are detailed below:

Registration Fee (Per Credit Hour)	Florida Residents	Non-Florida Residents
Undergraduate Courses	13.00	37.00
Graduate Courses	16.50	40.50

(for fee purposes all classes on a 500 level and above are considered graduate courses)

Registration is not complete until all fees are paid. Additional information concerning due dates for fee payment will be provided with individual class schedules.

Academic Calendar July 29 thru Aug. 16

Official Registration Period

September 20

Change Day And Late Registration

September 23

Classes Start

September 27

Last day to ADD (without permission of Instructor and Dean).

Last day to DROP (or withdraw from the University,) with fee refund.

Last day to Late Register

October 21

Last day to drop course without a grade being recorded.

MORNING CLASSES

- 8:00 - 10:05
- 10:15 - 12:20
- 12:30 - 1:30 (Free activity Period)

AFTERNOON CLASSES

- 1:45 - 3:50
- 4:00 - 6:05

EVENING CLASSES

- E6:20 - 8:25
- E8:45 - 10:50

Days: M - Monday
T - Tuesday
W - Wednesday
R - Thursday
F - Friday
S - Saturday

Note: An "E" before a time denotes that the course is being offered in the evening.

REGISTRATION

All students may register whether seeking a degree or not.

Note: Special Students (non-degree) cannot register for 600 level courses. These must be added on a space available basis on Change Day.

STEP 1:

Obtain a registration course request form from the Office of Registration and Records, Room 216, Primera Casa, or from your academic advisor.

STEP 2:

See your academic advisor and have the registration form signed.

STEP 3:

Submit registration form, in person, to the Office of Registration and Records by 5:00 p.m. on August 16, 1974. Do not leave form with faculty advisor, as your student status must be verified when form is submitted.

Class schedules and fee cards will be mailed to registered students approximately one week prior to Change Day.

PREEMPTIVE WORK TIME

Preemptive Work Time will be available to a student who has certain work commitments or home responsibilities which require that no courses be scheduled during a particular period of time. Preemptive Work Time allows a student to "block-out" certain hours, during which time, no courses will be scheduled, even though they may be offered only during the hours blocked-out.

To request Preemptive Work Time, a student should briefly state, in writing, his reason (s) for requesting Preemptive Work Time and present this in person to the Office of Registration and Records, Room 216.

ADVISEMENT

Students without advisors should contact their departmental offices so an advisor assignment can be arranged.

SELECTION OF COURSES

During registration, students will select the specific section of a course which best fits their time schedule. Every attempt will be made to schedule the exact section (s) requested. However, if a requested section (s) is full (no seats left), the student will be scheduled if possible in an open section meeting in the time period checked under "Alternate Schedule Preference." This means that an attempt will be made to schedule all alternate sections on either Monday - Thursday or Tuesday - Friday in the daytime; or Monday - Wednesday or Tuesday - Thursday in the evening thereby giving the student, if possible, a two-day schedule.

Note: If one of the daytime alternate schedule preference times is checked, courses will not be scheduled in the evening even though they may be offered only at that time. Also if an evening alternate schedule time is checked, courses will not be scheduled during the daytime.

LATE REGISTRATION AND CHANGE DAY

Failure to register will result in a student having to follow late registration procedure between the hours of 9:00 a.m. and 8:00 p.m. on Change Day, September 20.

Questions regarding the registration procedure will be answered by the Office of Registration and Records. Please call 223-2300 EXT 2361.

All courses, times, and instructors are subject to change without notice.

Florida International University

Schedules Of Courses

FALL QUARTER 1974

COLLEGE OF ARTS AND SCIENCES

ANTHROPOLOGY AND SOCIOLOGY

COURSE NO.	TITLE	SECT.	CR.	TIME	DAYS	INSTR.
ANT 301	THE SCOPE OF ANT	C01	05	4:00-6:05	T/F	WEISS
ANT 302	ORIGIN & DISPERSION	C01	05	1:45-3:50	T/F	WEISS
ANT 325	KINSHIP & SOC ORGAN	C01	05	8:00-10:05	M/R	J. KANDEL
ANT 335	URBAN ANTHROPOLOGY	C01	05	8:00-10:05	T/F	ROSS
ANT 337	CULTURE & PERSONALITY	C01	05	4:00-6:05	M/R	R. KANDEL
ANT 403	RACIAL & CULT MINORIT	C01	05	8:00-12:20	WED	SMITH
ANT 411	THE RURAL POOR	C01	05	1:45-3:50	M/R	BROWN
ANT 421	LATIN AMERICA	C01	05	10:15-12:20	M/R	BROWN
ANT 426	AREA STUDY AFRICA	C01	05	1:45-3:50	T/F	J. SMITH
ANT 429	MAYA CIVILIZATION	C01	05	8:45-10:05	T/R	LACOMBE
ANT 475	VISUAL ANTH	C01	05	8:00-12:20	WED	J. KANDEL
ANT 485	CULTURE SHOCK 2000 AD	C01	05	10:15-12:20	M/R	R. KANDEL
ANT 515	RESEARCH IN MAYA CIV	C01	05	8:00-12:20	SAT	LACOMBE
ANT 591	DIR INDEPENDENT STUDY	C01	VAR	ARR	ARR	BROWN
		C02	VAR	ARR	ARR	ROSS
		C03	VAR	ARR	ARR	KANDEL
		C04	VAR	ARR	ARR	SMITH

ASC 301	ANTHROPOLOGICAL THEOR	C01	05	1:45-3:50	M/R	J. SMITH
ASC 302	SOCIOLOGICAL THEORIES	C01	05	8:20-8:25	T/R	LEVINE
ASC 303	RESEARCH METHODS	C01	05	10:15-12:20	M/R	ROSS
ASC 304	ETH ISS IN SOC SC RES	C01	05	10:15-12:20	T/F	OSBORNE

SOC 301	THE SCOPE OF SOCIOLOGY	C01	05	1:45-3:50	T/F	VOLKER
SOC 302	THE BASIC IDEAS OF SOC	C01	05	8:45-10:50	T/R	LEVINE
SOC 311	THE INDIVIDUAL IN SOCIETY	C01	05	8:00-10:05	M/R	JACKSON
SOC 321	CRIMINOLOGY	C01	05	4:00-6:05	T/F	TBA
SOC 323	SOCIAL DEVIANCY	C01	05	1:45-3:50	M/R	TBA
SOC 341	THE COMMUNITY	C01	05	8:00-10:05	M/R	SILEO
SOC 352	HUMAN ECOLOGY	C01	05	8:45-10:50	M/W	REID
SOC 363	MARRIAGE & THE FAMILY	C01	05	4:00-6:05	M/R	KNOWLES
SOC 472	ROLE OF WOMEN CONT SOC	C01	05	8:00-10:05	T/F	TBA
SOC 572	SOCIOLOGY OF LAW	C01	05	8:20-8:25	M/W	YEAMAN
SOC 582	SOCIOLOGY OF EDUC	C01	05	8:20-8:25	M/W	REID
SOC 591	DIR INDEPENDENT STUDY	C01	VAR	ARR	ARR	SILEO
		C02	VAR	ARR	ARR	OSBORNE
		C03	VAR	ARR	ARR	LEVINE
		C04	VAR	ARR	ARR	REID

BIOLOGICAL SCIENCES

BSC 301	BIOCHEMISTRY	C01	05			STEIN
BSC 301	BIOCHEMISTRY LAB	L51	02	1:45-6:05	MON	STEIN/MURISON
		L52	02	TBA	TBA	STEIN/MURISON
BSC 306	BIOL BASIS OF HUM SEX	C01	05	4:00-6:05	M/R	RUTCHIK
BSC 310	MICROBIOLOGY	C01	05	10:15-12:20	T/F	OKUBO
BSC 310	MICROBIOLOGY LAB	L51	02	1:45-6:05	TUE	OKUBO
		L52	02	1:45-6:05	WED	OKUBO
		L53	02	1:45-6:05	FRI	OKUBO
BSC 320	TOPICS IN TROPICAL BOT	C01	05	8:20-8:25	T/R	MARTHUR
BSC 332	ENTOMOLOGY	C01	05	1:45-3:50	T/F	PAN
BSC 335	BIRDS & MAMMALS	C01	05	8:00-10:15	M/R	SCHWARTZ
BSC 335	BIRDS & MAMMALS LAB	L51	02	10:15-12:20	M/R	SCHWARTZ
BSC 336	EMBRYOLOGY	C01	05	10:15-12:20	M/R	BABCOCK
BSC 336	EMBRYOLOGY LAB	L51	02	1:45-3:50	M/R	BABCOCK
		L52	02	TBA	TBA	BABCOCK
BSC 338	HISTOLOGY	C01	05	10:15-12:20	T/F	MURISON
BSC 338	HISTOLOGY LAB	L51	02	1:45-3:50	TUE	MURISON
BSC 341	GENETICS	C01	05	8:00-10:15	T/F	PAN
BSC 350	INT HUMAN PHYSIOLOGY	C01	04	8:00-10:15	T/F	CHEN
BSC 350	INT HUMAN PHYSIOL LAB	L51	01	1:45-6:05	WED	CHEN
		L52	01	1:45-6:05	WED	CHEN
BSC 355	HUMAN GROSS ANATOMY	C01	04	1:45-3:50	M/R	SOHAL
BSC 355	HUMAN GROSS ANATOMY LAB	L51	02	4:00-6:05	M/R	SOHAL
BSC 355	HUM GROSS ANAT DEMO	D51	01	10:15-12:20	FRI	SOHAL
BSC 360	ECOLOGY	C01	05	10:15-12:20	T/F	GOLDBERG
BSC 372	HUMAN PHYSIOLOGY	C01	05	1:45-3:50	T/F	CHEN
BSC 372	HUMAN PHYSIOLOGY LAB	C01	02	8:00-12:20	WED	CHEN
BSC 374	HUMAN PHYSIOLOGY	C01	05	10:15-12:20	T/F	BABCOCK
BSC 380	PROJECT LABORATORY	1-10	3-8	TBA	VAR	OKUBO/GOLDBERG
BSC 401	DEVELOPMENTAL BIOLOGY	C01	05	8:00-10:15	M/R	MURISON
BSC 480	PROJECT LABORATORY	1-10	3-8	VAR	VAR	STEIN/MURISON/OKUBO
BSC 504	CELL PHYSIOLOGY & BIO-PHYSICS	C01	05	4:00-6:05	M/R	CUERVO
BSC 565	PLANT PHY/BIOCHEM	C01	05	8:20-8:25	M/W	McARTHUR
BSC 580	PROJECT LAB	1-10	3-8	VAR	VAR	STAFF
BSC 590	BIOLOGY SEMINAR	C01	01	12:20-1:45	FRI	STEIN

CHEMISTRY

COURSE NO.	TITLE	SECT.	CR.	TIME	DAYS	INSTR.
CHE 301	ORGANIC CHEM I	C01	05	E6:20-8:25	M/W	HERRIOTT
		C02	05	10:15-12:20	T/F	HERRIOTT
CHE 301	ORGANIC CHEM LAB I	L51	02	E6:20-10:50	TUE	TBA
		L52	02	8:00-12:30	WED	TBA
		L53	02	1:45-6:05	WED	TBA
		L55	02	1:45-6:05	THUR	TBA
		L56	02	E6:20-10:50	THUR	TBA
		L57	02	1:45-6:05	MON	TBA
CHE 302	ORGANIC CHEM II	C01	05	8:00-10:05	M/R	KELLER
CHE 302	ORGANIC CHEM LAB II	L51	02	E6:20-10:50	MON	TBA
		L52	02	8:00-12:30	TUE	TEA
		L53	02	E6:20-10:50	WED	TBA
		L54	02	8:00-12:30	FRI	TBA
CHE 305	CONTEMP CHEM I	C01	05	8:00-10:05	M/R	WILLIAMS
CHE 305	CONTEMP CHEM LAB I	L51	02	E6:20-10:50	TUE	TBA
		L52	02	8:00-12:30	WED	TBA
		L53	02	1:45-6:05	WED	TBA
CHE 321	THERMODYNAMICS	C01	05	4:00-6:05	M/R	SHELDON
CHE 325	PHYSICAL CHEM LAB	C01	01	1:45-6:05	WED	PARKER
CHE 404	BIO-ORGANIC CHEM	C01	05	10:15-12:20	T/F	KELLER
CHE 406	STATISTICAL MECHANICS	C01	05	8:00-10:05	T/F	SHELDON
CHE 431	INORGANIC CHEM	C01	05	E6:20-8:25	M/W	WILLIAMS
CHE 491	INDEPENDENT STUDY	C01	VAR		TBA	STAFF
CHE 492	INDEPENDENT STUDY	C01	VAR		TBA	STAFF
CHE 493	INDEPENDENT STUDY	C01	VAR		TBA	STAFF
CHE 495	SEMINAR	C01	02		TBA	STAFF

ECONOMICS

ECO 301	ECON. MAN & SOCIETY	C01	05	8:00-10:05	M/R	THOMAS
		C02	05	E6:20-8:25	M/W	SAMUELS
		C03	05	1:45-3:50	T/F	
ECO 305	CONSUMER ECONOMICS	C01	05	8:45-10:50	T/R	TBA
ECO 306	MONEY AND BANKING	C01	05	8:00-10:05	M/R	MONCARZ
ECO 307	THEORY OF PRICE	C01	05	E6:20-8:25	T/R	FRANKLIN
ECO 313	COMPARATIVE ECON SYSTEM	C01	05	8:00-10:05	T/F	MULLER
ECO 319	INTRO ENVIRO ECON	C01	05	1:45-3:50	M/R	TBA
ECO 320	INTRO URBAN ECON	C01	05	8:45-10:05	M/W	SAMUELS
ECO 410	INTRO ECON DEVELOPMENT	C01	05	E6:20-8:25	M/W	CASEY
ECO 412	RADICAL POLI ECON	C01	05	1:45-3:50	T/F	TRAGER
ECO 429	MANPOWER PROB & PROGRAM	C01	05	1:45-3:50	T/F	FRANKLIN
ECO 444	PROSPERITY, DEPRESSION	C01	05	10:15-12:20	T/F	MULLER
	AND INFLA					
ECO 460	UNDERGRAD TUTORIAL	C01	05	N/A	N/A	ALL FACULTY
ECO 467	SEM/CURRENT ECO TOPICS	C01	05	1:45-3:50	M/R	WILKINS
ECO 509	THEOR ECO PROGRESS	C01	05	10:15-12:20	M/R	THOMAS
ECO 560	INDIVIDUAL STUDY	C01	05	N/A	N/A	ALL FACULTY
ECO 536	MULTINATIONAL CORP	C01	05	10:15-12:20	M/R	WILKINS
ECO 606	MANAGERIAL ECON	C01	05	E6:20-8:25	M/W	TBA

ENGLISH

ENG 303	JEWISH THEMES AM LIT	C01	05	10:15-12:20	T/F	ELKINS
ENG 311	EXPOSITORY WRITING	C01	05	10:15-12:20	T/F	ARNOLD
		C02	05	8:00-10:05	M/R	ELKINS, M.J.
ENG 312	REPORT & TECH WRITING	C01	05	E6:20-8:25	M/W	ELKINS, C
ENG 320	ENGLISH LINGUISTICS	C01	05	8:00-10:05	T/F	ANTRIM
ENG 360	SATIRE	C01	05	10:15-12:20	M/R	HAUSER
ENG 402	19TH CENT ENG NOVEL	C01	05	1:45-3:50	T/F	CALLAWAY
ENG 403	MOD EXPERIMENTAL NOVEL	C01	05	8:00-10:05	M/R	HALL
ENG 415	WRITING POETRY	C01	05	8:00-12:20	WED	HALL
ENG 416	WRITING FICTION	C01	05	1:45-6:05	WED	JONES
ENG 420	HISTORY OF THE FILM	C01	05	4:00-6:05	M/R	BERK
ENG 433	SHAKESPEARE: HISTORY	C01	05	8:45-10:45	M/W	WATSON
ENG 440	INTRO CARIBBEAN LIT	C01	05	1:45-3:50	M/R	DATHORNE
ENG 450	LIT & VISUAL ARTS	C01	05	8:00-10:05	T/F	ARNOLD
ENG 455	BASIC COMMUN. SKILLS	C01	05	E6:20-8:25	T/R	CUMMINGS
ENG 460	APPLIED LING USAGE	C01	05	8:00-10:05	M/R	DWYER
ENG 498	INDEPENDENT STUDY	C01	VAR	VAR	VAR	WATSON
ENG 511	D.H. LAWRENCE	C01	05	8:45-10:50	T/R	WAUGH
ENG 533	18TH CENT ENG LIT	C01	05	6:20-8:45	T/R	CALLAWAY
ENG 534	MEDIEVAL LIT	C01	05	1:45-3:50	M/R	DWYER
ENG 598	INDEPENDENT STUDY	C01	VAR	VAR	VAR	CUMMINGS
ENG 599	COMPARATIVE BLACK LIT	C01	05	E6:20-8:25	M/W	DATHORNE

ENVIRONMENTAL STUDIES

EVR 301	ENV. SCIENCE I	C01	05	10:15-12:20	M/R	PARKER
		C02	05	8:45-10:50	M/W	PARKER
EVR 441	ENERGY RESOURCES	C01	05	1:45-3:50	T/F	SHAW
EVR 412	METEOROLOGY	C01	05	8:45-10:50	T/R	TBA
EVR 491	INDEPENDENT STUDY	C01	VAR		TBA	STAFF
EVR 492	INDEPENDENT STUDY	C01	VAR		TBA	STAFF

FINE ARTS

COURSE NO.	TITLE	SECT.	CR.	TIME	DAYS	INSTR.
ARH 305	SURVEY OF CONTEMP ART	C01	05	1:45-3:50	T/F	TBA
ARH 567	AMERICAN ART	C01	05	10:15-12:20	T/F	LANGER
ARH 585	CONTEMPORARY ART	C01	05	1:45-3:50	T/F	LANGER
FIA 315	DRAWING	C01	05	TBA	TBA	NICASTRI
FIA 316	FIGURE DRAWING	C01	05	8:00-12:20	M/R	NICASTRI
		C02	05	E6:20-10:50	T/R	
FIA 325	PAINTING	C01	05	8:00-6:05	WED	
		C02	05	1:45-6:05	M/R	
FIA 335	SCULPTURE	C01	05	1:45-6:05	M/R	LYLE
		C02	05	E6:20-10:50	T/R	LYLE
FIA 337	JEWELRY	C01	05	8:00-12:20	T/F	JACOBS
		C02	05	1:45-6:05	T/F	JACOBS
FIA 345	PRINTMAKING	C01	05	8:00-6:05	WED	NICASTRI
FIA 357	INTRO TO FILMMAKING	C01	05	8:00-12:20	WED	THYMAN
FIA 361	CERAMICS	C01	05	8:00-12:20	M/R	WYROBA
FIA 525	PAINTING	C01	VAR	8:00-6:05	WED	
		C02	VAR	1:45-6:05	M/R	
		C03	VAR	1:45-6:05	T/F	
FIA 535	SCULPTURE	C01	VAR	1:45-6:05	M/R	LYLE
		C02	VAR	E6:05-10:50	T/R	LYLE
FIA 537	JEWELRY	C01	VAR	8:00-12:20	T/F	JACOBS
		C02	VAR	1:45-6:05	T/F	JACOBS
FIA 545	PRINTMAKING	C01	VAR	8:00-6:05	WED	NICASTRI
FIA 565	CERAMICS	C01	VAR	1:45-6:05	T/F	TBA

GEOLOGY

GEO 301	ENV GEOLOGY I	C01	05	8:00-10:05	T/F	TBA
GEO 302	ENV GEOLOGY II	C01	05	E6:20-8:25	T/R	MAURRASSE
GEO 312	MINERALOGY	C01	05	10:15-12:20	TUE	
				8:00-12:20	FRI	SHAW
GEO 321	SEDIMENTOLOGY	C01	05	1:45-3:50	M/R	MAURRASSE
GEO 321	SEDIMENTOLOGY LAB	L51	02	8:00-12:30	WED	TBA
GEO 431	INTRO TO PETROLOGY	C01	05	4:00-6:05	M/R	TBA
GEO 461	MICROPALEONTOLOGY	C01	05	E6:20-8:25	M/W	MAURRASSE

HISTORY

HIS 301	INTRO: WEST CIVIL	C01	05	10:15-12:20	M/R	KAMINSKY
HIS 313	RENAISSANCE & REFORM	C01	05	10:15-12:20	T/F	LEED
HIS 320	EARLY AMER TO 1776	C01	05	1:45-3:50	T/F	ROCK
HIS 323	US 1830-1898	C01	05	E6:20-8:25	M/W	J. PETERSON
HIS 360	AFRICAN SURVEY (I)	C01	05	8:00-10:05	T/F	MARSHALL
HIS 375	MOD BRITAIN 1730/PRSNT	C01	05	1:45-3:50	M/R	KLIMMER
HIS 382	MYTH OF SO HISTORY	C01	05	E8:45-10:50	T/R	PYRON
HIS 399	INDEPENDENT STUDIES	C01	VAR	VAR	VAR	STAFF
HIS 419	MEDIAVAL HERETICS & MYSTICS	C01	05	E6:20-8:25	M/W	KAMINSKY
HIS 427	COMPARATIVE SLAVERY	C01	05	10:15-12:20	T/F	MARSHALL
HIS 459	LIVES OF AMER RADICALS	C01	05	4:00-6:05	M/R	KLIMMER
HIS 475	SCHOOLING IN HISTORY	C01	05	4:00-6:05	T/F	LEED
HIS 486	WOMEN IN AMERICA (I)	C01	05	E8:45-10:50	M/W	J. PETERSON
HIS 497	COMP COLONIAL EXPERIEN IN THE AMERICAS	C01	05	E6:20-8:25	T/R	ROCK/PESCATELLO
HIS 499	INDEPENDENT STUDIES	C01	VAR	VAR	VAR	STAFF
HIS 520	MARXISM	C01	10	8:00-12:20	WED	B. PETERSON
HIS 599	INDEPENDENT STUDIES	C01	VAR	VAR	VAR	STAFF

INTERNATIONAL RELATIONS

INR 301	FOUND OF INT'L REL	C01	05	10:15-12:20	M/R	GREENBERG
INR 331	CORRUPTION & MODRNIZTN IN DEV COUNTRIES	C01	05	E6:20-8:25	T/R	MAINGOT
INR 334	WORLD REGIONAL GEOG	C01	05	1:45-3:50	T/F	CLEM
INR 345	POPULATION & SOCIETY	C01	05	8:00-10:05	T/F	CLEM
INR 356	TOUR & INTL AFFAIRS	C01	05	10:15-12:20	T/F	HILLER
INR 407	INDEPENDENT STUDY	C01	VAR	VAR	VAR	
INR 442	ETHNIC CONFLICT	C01	05	E8:45-10:50	T/R	MAINGOT
INR 518	INDEPENDENT STUDY	C01	VAR	VAR	VAR	

MATHEMATICAL SCIENCES

MAS 300	INTRO TO COMPUTER PROGRAMMING	C01	03	9:05-10:05	M/R	TBA
		C02	03	1:45-2:45	M/R	TBA
		C03	03	E8:45-9:45	M/W	TBA
		C04	03	8:00-9:00	T/F	TBA
		C05	03	9:05-10:05	T/F	TBA
		C06	03	10:15-11:15	T/F	TBA
		C07	03	11:20-12:20	T/F	TBA
		C08	03	1:45-2:45	T/F	TBA
		C09	03	E8:45-9:45	T/R	TBA
MAS 301	CALCULUS I	C01	05	E6:20-8:25	M/W	TBA
		C02	05	10:15-12:20	T/F	TBA
MAS 303	MULTIVAR. CALCULUS	C01	05	1:45-3:50	T/F	TBA
MAS 304	MATH FOR STATISTICS	C01	05	8:00-10:15	M/R	TBA
		C02	05	1:45-3:50	M/R	TBA
		C03	05	4:00-6:05	M/R	TBA
		C04	05	E6:20-8:25	M/W	TBA
		C05	05	E8:45-10:50	M/W	TBA
		C06	05	8:00-10:05	T/F	SHERSHIN, C.
		C07	05	1:45-3:50	T/F	TBA
		C08	05	E6:20-8:25	T/R	TBA

COURSE NO.	TITLE	SECT.	CR.	TIME	DAYS	INSTR.
MAS 307	INTRO TO STATISTICS	C01	05	10:15-12:20	M/R	TBA
		C02	05	4:00-6:05	M/W	SANCHEZ
		C03	05	8:00-10:05	T/F	TBA
		C04	05	1:45-3:50	T/F	TBA
		C05	05	E6:20-8:25	T/R	TBA
MAS 311	INTRO TO COMPUTERS I	C01	05	8:00-10:05	M/R	TBA
		C02	05	E6:20-8:25	M/W	TBA
		C03	05	E6:20-8:25	T/R	TBA
MAS 313	ADV PROGRAMMING LANGUAGE	C01	05	E6:20-8:25	M/W	TBA
		C02	05	1:45-3:50	T/F	TBA
MAS 315	PRIN OF DATA PROCESS	C01	05	1:45-3:50	M/R	TBA
MAS 317	ELEM MATHEMATICS	C01	05	8:00-10:15	M/R	TBA
		C02	05	10:15-12:20	T/F	TBA
		C03	05	E6:20-8:25	T/R	TBA
MAS 321	CALCUL FOR MANAG & SS	C01	05	10:15-12:20	T/F	TBA
		C02	05	E8:45-10:50	T/R	TBA
MAS 325	DIFFERENTIAL EQUATIONS	C01	05	8:00-10:05	T/F	TBA
MAS 331	INTRO TO MATH STAT I	C01	05	E6:20-8:25	T/R	TBA
MAS 345	APPL LINEAR ALGEBRA	C01	05	E6:20-8:25	M/W	TBA
MAS 375	DISCRETE MATHEMATICS	C01	05	8:00-10:05	T/F	TBA
MAS 395	INDEPENDENT STUDY	C01	VAR	VAR	VAR	
MAS 398	SPECIAL TOPICS	C01	VAR	8:30-11:00	SAT	WILLIAMS
MAS 401	FOUND OF MATH I	C01	05	4:00-6:05	M/W	TBA
MAS 416	DATA COMMUNICATIONS	C01	05	E6:20-8:25	T/R	TBA
MAS 495	INDEPENDENT STUDY	C01	VAR	VAR	VAR	
MAS 498	SPECIAL TOPICS	C01	VAR	E7:00-9:00	WED	KRAYNEK
MAS 515	DATA STRUCTURES	C01	05	1:45-3:50	M/R	TBA
		C02	05	E6:20-8:25	M/W	TBA
MAS 517	COMPUTER GRAPHICS	C01	05	1:45-3:50	M/R	TBA
MAS 532	RELIAB ENGINEERING II	C01	05	E6:20-8:25	M/W	SHAPIRO
MAS 541	DESIGN OF EXPERIMENTS I	C01	05	1:45-3:50	M/R	TBA
MAS 570	ALGEBRAIC STRUCTURES I	C01	05	10:15-12:20	M/R	TBA
MAS 595	INDEPENDENT STUDY	C01	VAR	VAR	VAR	
MAS 598	SPECIAL TOPICS	C01	VAR	VAR	VAR	
NAS 301	PHYSICS & CALCULUS	C01	10	10:15-12:20	MTRF	NUNNALLY/HARDY

MODERN LANGUAGES

POR 301	BEG LANG INSTRUCTION	C01	05	8:00-10:05	M/R	TBA
POR 476	CONTRASTIVE MORPHOLOGY	C01	05	8:00-10:05	M/R	TBA
POR 438	PROB IN READ & INTERP	C01	05	10:15-12:20	M/R	SANCHEZ
SPA 301	BEG LANG INSTRUCTION	C01	05	1:45-3:50	M/R	FISCHER
SPA 325	INTERM SYNTAX/COMP	C01	05	8:00-10:05	M/R	FISCHER
SPA 326	ADVANCED SYNTAX/COMP	C01	05	8:00-10:05	M/R	AID
		C02	05	E8:45-10:15	M/W	FISCHER
SPA 327	COMMUNICATION ARTS	C01	05	10:15-12:20	M/R	CROSBY
SPA 398	LINGUISTIC APPRENTICE	C01	05	ARR	TBA	BOUMA
SPA 438	PROB IN READ & INTERP	C01	05	10:15-12:20	T/F	CROSBY
SPA 497	SPECIAL TOPICS	C01	05	E6:20-8:25	M/R	SANCHEZ
SPA 506	GENRE STUDIES	C01	05	10:15-12:20	M/W	BOUMA
MOL 309	INTRO TO GEN LING	C01	05	1:45-3:50	M/R	AID
MOL 405	CREATIVE MODES	C01	05	8:00-10:05	T/F	MENDOZA
MOL 478	PROB READ/INTER FRE/ENG	C01	05	E6:20-8:25	T/R	HERNANDEZ
MOL 498	INDEPENDENT STUDY	C01	05	ARR	TBA	DISALVO
GER 301	BEG LANG INSTRUCTION	C01	05	E6:20-8:25	M/W	WAGNER
GER 327	COMMUNICATION ARTS	C01	05	4:00-6:05	T/F	MENDOZA
GER 501	LANG FOR READING KNOWL	C01	05	E8:45-10:50	M/W	WAGNER
FRE 301	BEG LANG INSTRUCTION	C01	05	8:00-10:05	T/F	TBA
FRE 325	INTERM SYNTAX/COMP	C01	05	10:15-12:20	T/F	GUERS-VILLATE
FRE 406	GENRE STUDIES	C01	05	1:45-3:50	T/F	WELCH
FRE 407	THE LITERARY GENERATION	C01	05	4:00-6:05	T/F	HERNANDEZ
FRE 398	LINGUISTIC APPRENTICE	C01	05	ARR	TBA	WELCH
ITA 325	INTERM SYNTAX/COMP	C01	05	1:45-3:50	T/F	COLETTI
ITA 497	SPECIAL TOPICS	C01	05	10:15-12:20	T/F	KOZMA
SPA 311	BEGINNING CONV SPA	C01	05	8:00-10:05	M/R	TBA
		C02	05	8:00-10:05	M/R	TBA
		C03	05	10:15-12:20	M/R	TBA
		C04	05	10:15-12:20	M/R	TBA
		C05	05	1:45-3:50	M/R	TBA
		C06	05	5:00-6:05	MTWR	TBA
		C07	05	E6:20-8:25	M/W	TBA
		C08	05	E6:20-8:25	M/W	TBA
		C09	05	8:00-10:05	T/F	TBA
		C10	05	10:15-12:20	T/F	TBA
		C11	05	10:15-12:20	T/F	TBA
		C12	05	E6:20-8:25	T/R	TBA
		C13	05	E6:20-8:25	T/R	TBA
SPA 312	INTER I CONV SPA	C01	05	8:00-10:05	M/R	TBA
		C02	05	10:00-12:20	M/R	TBA
		C03	05	10:00-12:20	M/R	TBA
		C04	05	1:45-3:50	M/R	TBA
		C05	05	E6:20-8:25	M/W	TBA
		C06	05	10:15-12:20	T/F	TBA
		C07	05	E6:20-8:25	T/R	TBA
SPA 313	INTER II CONV SPA	C01	05	8:00-10:15	M/R	TBA
		C02	05	10:15-12:20	M/R	TBA

COURSE NO.	TITLE	SECT.	CR.	TIME	DAYS	INSTR.
SPA 314	ADVANCED CONV SPA	C01	05	10:15-12:20	M/R	TBA
		C02	05	E6:20-8:25	M/W	TBA
		C03	05	E6:20-8:25	M/W	TBA
		C04	05	10:15-12:20	T/F	TBA
FRE 311	BEGINNING CONV FRENCH	C01	05	8:00-10:05	M/R	TBA
		C02	05	10:15-12:20	M/R	TBA
		C03	05	1:45-3:50	M/R	TBA
		C04	05	E6:20-8:25	M/W	TBA
		C05	05	8:00-10:05	T/F	TBA
		C06	05	10:15-12:20	T/F	TBA
		C07	05	E6:20-8:25	T/R	TBA
FRE 312	INTER I CONV FRE	C01	05	8:00-10:15	M/R	TBA
		C02	05	10:15-12:20	M/R	TBA
FRE 312	INTER I CONV FRE	C03	05	E6:20-8:25	M/W	TBA
		C04	05	10:15-12:20	T/F	TBA
FRE 313	INTER II CONV FRE	C01	05	8:00-10:05	M/R	TBA
		C02	05	10:00-12:20	M/R	TBA
		C03	05	E6:20-8:25	M/W	TBA
		C04	05	10:15-12:20	T/F	TBA
FRE 314	ADVANCED CONV FRE	C01	05	1:45-3:50	M/R	TBA
		C02	05	8:00-10:05	M/R	TBA
ITA 311	BEGINNING CONV ITA	C01	05	8:00-10:05	T/F	TBA
		C02	05	E6:20-8:25	M/W	TBA
		C03	05	10:15-12:20	M/R	TBA
ITA 312	INTER I CONV ITA	C01	05	10:15-12:20	M/R	TBA
		C02	05	E6:20-8:25	M/W	TBA
ITA 313	INTER II CONV ITA	C01	05	1:45-3:50	T/F	TBA
		C02	05	10:15-12:20	T/F	TBA
POR 311	BEGINNING CONV POR	C01	05	E6:20-8:25	T/R	TBA
		C02	05	E6:20-8:25	T/R	TBA
POR 312	INTER I CONV POR	C01	05	8:00-10:05	T/F	ESTORIL

MUSIC

MUS 305	UNDER & ENJOY OF MUSIC	C01	05	1:45-3:50	M/R	LEEDS
MUS 307	EVOLUTION OF JAZZ	C01	05	4:00-6:05	M/R	LEEDS
MUS 315	MUSIC HISTORY SURVEY	C01	05	8:00-10:05	M/R	VAGRAMIAN
MUS 327	FORM & ANALYSIS	C01	05	1:45-3:50	T/F	VAGRAMIAN
MUS 328	SONG WRITING	C01	05	10:15-12:20	M/R	SWAN
MUS 335	CHORAL TECHNIQUES	C01	05	10:15-12:20	T/F	TBA
MUS 385-585	DIRECTED STUDY	C01	1-5	HRS. ARR		FINK
MUS 395-595	RESEARCH	C01	1-5	HRS. ARR		FINK
MUS 426	20TH CENT THEORY & COMP	C01	05	1:45-3:50	T/F	SWAN
MUS 435	BASIC CONDUCTING	C01	02	10:15-12:20	WED	McELFRESH
MUS 485	RECITAL & RESEARCH	C01	02	HRS. ARR		VAGRAMIAN
MUP 305-505	UNIVERSITY SINGERS	C01	VAR	10:15-12:20	T/F	McELFRESH
MUP 307-507	COLLEGIATE CHORALE	C01	VAR	1:45-3:50	M/R	TBA
MUP 317-517	WIND ENSEMBLE	C01	VAR	4:00-6:05	M/R	TBA
MUP 325-525	STUDIO JAZZ	C01	VAR	4:00-6:05	T/F	TBA
MUP 327-527	CHAMBER MUSIC	C01	VAR	1:45-3:50	WED	FINK
MUP 335-535	APPLIED MUSIC-BRASS	C01	1-2	HRS. ARR		FINK
MUP 345-545	APPLIED MUSIC-PERCUSS	C01	1-2	HRS. ARR		FINK
MUP 355-555	APPLIED MUS-PIANO/ORG	C01	1-2	HRS. ARR		FINK
MUP 365-565	APPLIED MUSIC-STRINGS	C01	1-2	HRS. ARR		FINK
MUP 366	GUITAR SKILLS	C01	05	1:45-3:50	M/R	WILSON
		C02	05	E6:20-8:25	M/W	WILSON
MUP 367	GUITAR SKILLS INTER.	C01	05	4:00-6:05	T/F	WILSON
MUP 375-575	APPLIED MUSIC-VOICE	C01	1-2	HRS. ARR		FINK
MUP 385-585	APPLIED MUSIC-WOODWIND	C01	1-2	HRS. ARR		FINK

PHILOSOPHY AND RELIGION

PHI 300	INTRO TO PHI THINKING	C01	05	8:00-10:05	M/R	KUSHNER
PHI 301	LOGIC & PROB SOLVING	C01	05	1:45-3:50	T/F	MONARCH
PHI 311	ANCIENT PHILOSOPHIES	C01	05	10:15-12:20	T/F	KOVACS
PHI 328	PHIL OF SCIENCE	C01	05	10:15-12:20	M/R	MONARCH
PHI 416	PHENOMENOLOGY	C01	05	1:45-3:50	M/R	KOVACS
PHI 421	ETHICAL ISSUES IN POLI	C01	05	8:00-10:05	M/R	ARIAS
PHR 310	E. PHIL & REL THOUGHT	C01	05	6:20-8:25	M/W	KUSHNER
REL 300	RELIGION & LIFE STORIES	C01	05	8:00-10:05	T/F	HUCHINGSON
REL 301	WHO IS GOD?	C01	05	1:45-3:50	M/R	HUCHINGSON
REL 329	MODERN CHRISTIANITY	C01	05	10:15-12:20	T/F	TBA
REL 350	MARRIAGE	C01	05	E6:20-8:25	T/R	TBA

PHYSICS

PHY 301	PHYSICS W/CALCULUS	C01	05	10:15-12:20	M/R	MORGANSTERN
PHY 301	JUNIOR PHYSICS LAB	L51	02	E6:20-10:50	MON	TBA
		L52	02	8:00-12:20	WED	TBA
		L53	02	1:45-6:05	WED	TBA
		L54	02	E6:20-10:50	WED	TBA
		L55	02	1:45-6:05	FRI	TBA
PHY 305	PHYSICS W/OUT CALCUL	C01	05	E8:45-10:50	T/R	TBA
PHY 309	ASTRONOMY	C01	05	1:45-3:50	M/R	MORGANSTERN
PHY 321	THERMODYNAMICS	C01	05	4:00-6:05	M/R	SHELDON
PHY 352	ELECTRONICS	C01	05	E6:20-8:25	T/R	MINTZ
PHY 411	STAT MECHANICS	C01	05	8:00-10:05	T/F	SHELDON
PHY 415	ELECTROMAGNETISM	C01	05	1:45-3:50	T/F	MINTZ
PHY 407	SENIOR PHYSICS LAB	C01	02	1:45-6:05	WED	TBA

POLITICAL SCIENCE

COURSE NO.	TITLE	SECT.	CR.	TIME	DAYS	INSTR.
POS 301	FOUND OF POLI SCI	C01	05	E6:20-8:25	M/W	LILIE
POS 307	GOVERN & POL OF CARIB	C01	05	8:00-10:05	M/R	BOODHOO
POS 311	ANCIENT MEDVL POL THRY	C01	05	8:00-10:05	T/F	NELSON
POS 314	POL OF PUBLIC BU'PCRY	C01	05	8:00-10:05	T/F	GOTTLIEB
POS 321	LEGISLATIVE PROCESS	C01	05	1:45-3:50	M/R	LILIE
POS 323	URBAN POLITICS	C01	05	1:45-3:50	T/F	CHAI
POS 331	JUDICIAL PROCESS	C01	05	10:15-12:20	T/F	VOLCANSEK
POS 339	INTERNATIONAL LAW	C01	05	10:15-12:20	M/R	AYBAR
POS 343	CONSTITUTIONAL LAW	C01	05	E8:45-10:50	T/R	STAFF
POS 409	TOPICS SPA/CARIB POL	C01	05	E6:20-8:25	M/W	KESELMAN
POS 413	AMER FOREIGN POLICY	C01	05	E8:45-10:50	T/R	STAFF
POS 423	TOPICS URBAN POLITICS	C01	05	E8:45-10:50	T/R	CHAI
POS 444	POLITICAL IDEOLOGIES	C01	05	1:45-3:50	T/F	NELSON
POS 463	ETHNIC POLITICS	C01	05	E8:45-10:50	M/W	KESELMAN
POS 471	LEGISLATIVE INTERNSHIP	C01	05	8:00-12:00	WED	LILIE/OLANDER
POS 472	JUDICIAL INTERNSHIP	C01	05	8:00-12:00	WED	VOLCANSEK
POS 473	ADMIN INTERNSHIP	C01	05	8:00-12:00	WED	GOTTLIEB/CHAI
POS 474	INTERNATIONAL INTER	C01	05	8:00-12:00	WED	AYBAR/BOODHOO
POS 541	TOPICS IN EDUC POLICY	C01	05	E6:20-8:25	T/R	PERRY
POS 591	HONORS SEMINAR: DEPEND	C01	05	10:15-1:45	WED	AYBAR
POS 407	INDEPENDENT STUDY	C01	05			OLANDER
POS 518	INDEPENDENT STUDY	C01	05			OLANDER

PSYCHOLOGY

PSY 300	INTRODUCTORY PSYCH	C01	05	1:45-3:50	M/R	JACEWITZ
PSY 305	INTRO EDUC PSYCH	C01	05	10:15-12:20	M/R	PARKER
		C02	05	4:00-6:05	M/R	PARKER
PSY 307	HUMAN GROWTH & DEV	C01	05	4:00-6:05	T/F	TBA
PSY 311	PSYCH OF DRUGS & ABUSE	C01	05	8:45-10:50	T/R	STAFF
PSY 320	INTRO COMM PSYCH	C01	05	10:15-12:20	M/R	CROWN
PSY 330	INTRO DEV'TAL PSYCH	C01	05	10:15-12:20	T/F	FINLEY
		C02	05	E6:20-8:25	T/R	STAFF
		C01	05	8:00-10:05	M/R	CROWN
PSY 331	ADOLESCENCE	C01	07	1:45-3:50	MON	HARTLEY
PSY 349	ADV GEN PSYCH W/LAB	L51	00	10:15-2:15	TUE	HARTLEY
		L52	00	1:45-5:45	THUR	HARTLEY
		C02	07	E6:20-8:25	MON	HARTLEY
		L53	00	E6:20-10:20	WED	HARTLEY
		L54	00	E6:20-10:20	THUR	HARTLEY
PSY 360	THEORIES OF PERSONALITY	C01	05	4:00-6:05	T/R	GONZALEZ
		C02	05	10:15-12:20	M/R	GONZALEZ
PSY 370	INTRO SOC PSYCH	C01	05	8:00-10:05	T/F	FLANDERS
PSY 371	APPLIED SOCIAL PSYCH	C01	05	1:45-3:50	T/F	FLANDERS
PSY 410	ENVIRONMENTAL PSYCH	C01	05	E6:20-8:25	T/R	STAFF
PSY 412	PSYCH OF LANGUAGE	C01	05	8:00-10:05	T/F	TIKOFSKY
PSY 420	PSYCHOLOGY OF CONFLICT	C01	05	10:15-12:20	T/F	DUNN
PSY 439	DEVELOP PSYCH LAB	C01	07	8:00-2:00	WED	FINLEY
PSY 441	PERCEPTUAL PROCESSES	C01	05	1:45-3:50	T/F	JACEWITZ
PSY 450	ORGANIZATIONAL PSYCH	C01	05	10:15-12:20	M/R	CASCIO
PSY 452	CONSUMER PSYCH	C01	05	E6:20-10:50	MON	BLUM
PSY 461	ABNORMAL PSYCH	C01	05	8:00-10:05	M/R	SAPER
		C02	05	E8:45-10:50	M/W	TBA
PSY 471	SMALL GROUP BEHAVIOR	C01	05	8:00-10:05	T/F	MORAN
		C02	05	E6:20-8:25	T/R	MORAN
PSY 499	HONORS RESEARCH PROJECT	C01	VAR			
PSY 561	CURRENT ISS MENTAL HEAL	C01	05	4:00-6:05	T/F	SAPER
PSY 569	DIFFERENTIAL PSYCH LAB	C01	07	1:45-3:50	MON	KURTINES
		L51	00	1:45-5:45	THUR	KURTINES
		L52	00	8:00-12:00	FRI	KURTINES
PSY 590	INDEPENDENT READINGS	C01	VAR	VAR	VAR	
PSY 591	INDEPENDENT FIELD EXP	C01	VAR	VAR	VAR	
PSY 592	INDEPENDENT RESEARCH	C01	VAR	VAR	VAR	

THEATRE

THE 315	VOCAL TECHNIQUES	C01	02	10:20-12:25	M/R	McELFRESH
THE 316	BASIC ORAL INTERP	C01	05	10:15-12:20	T/F	GIBERSON
THE 517	ACTING	C01	05	1:45-3:50	T/F	HELMING
THE 328	CHILDREN'S THEATRE	C01	05	1:45-3:50	M/R	HELMING
THE 357	INTRO TO FILMMAKING	C01	05	8:00-12:20	WED	TWYMAN
THE 565	PLAYWRITING	C01	05	1:45-6:05	WED	TWYMAN
THE 335	STAGECRAFT	C01	05	4:00-6:05	T/F	SELMON
THE 531	STAGE COSTUMING	C01	05	4:00-6:05	M/R	ANTRIM
DAN 315	DANCE	C01	05	8:00-10:05	M/R	ORLANDO
DAN 515	DANCE	C01	05	10:15-12:20	M/R	ORLANDO
THE 585	PERFORMANCE & PRODUCT	C01	1-15	VAR	VAR	SELMON
THE 595	RESEARCH	C01	1-5	VAR	VAR	GIBERSON

SCHOOL of BUSINESS and ORGANIZATIONAL SCIENCES

BUA 301	FINANCIAL MANAGEMENT	C01	05	1015-1220	M/R	
		C02	05	E620-0825	M/W	
		C03	05	E845-1050	T/R	
BUA 302	OPERATIONS MGT POLICY	C01	05	0800-1005	M/R	HERNANDEZ
		C02	05	1015-1220	T/F	HEBERT
		C03	05	0145-0350	M/R	HERNANDEZ
		C04	05	E620-0825	T/R	FAIN
		C05	05	E845-1050	M/W	SITEK

COURSE NO.	TITLE	SECT.	CR.	TIME	DAYS	INSTR.
BUA 303	PRINCIPLES OF MKGT	C01	05	0800-1005	M/R	TBA
		C02	05	1015-1220	T/F	TBA
		C03	05	0800-1220	S	TBA
		C04	05	E845-1050	M/W	TBA
		C05	05	E620-0825	T/R	TBA
BUA 305	QUAN METH FOR ADM	C01	05	0800-1005	M/R	SHAPIRO
		C02	05	0800-1005	T/F	ZEGAN
		C03	05	1015-1220	T/F	SHAPIRO
		C04	05	0145-0350	M/R	NELSON
		C05	05	E620-0825	M/W	MITTLEMAN
BUA 306	MNGT INFO SYSTEMS	C06	05	E620-0825	T/R	MEREDITH
		C07	05	E845-1050	M/W	REMYNTHON
		C01	05	1015-1220	T/F	TAGGART
		C02	05	0145-0350	M/R	LITECKY
		C03	05	E620-0825	M/W	GRECO
BUA 307	ACCT FOR PLAN-CONTR	C04	05	E845-1050	T/R	
		C01	05	0800-1005	T/F	TBA
		C02	05	1015-1220	T/F	TBA
		C03	05	0145-0350	T/F	TBA
		C04	05	0800-1245	S	TBA
BUA 309	ORGANIZATION MGT	C05	05	E620-0825	T/R	TBA
		C06	05	E845-1050	T/R	TBA
		C01	05	0800-1005	M/R	IMAMSHAH FRIDAY
		C02	05	1015-1220	T/F	RODRIGUEZ
		C03	05	0145-0350	M/R	DORSETT
BUA 312	BUS AND ITS ENVIR	C04	05	E620-0825	M/W	SHAKOOR
		C05	05	E620-0825	T/R	FRIDAY
		C06	05	E845-1050	M/W	BETHEA
		C01	05	1015-1220	M/R	TBA
		C02	05	0145-0350	M/R	TBA
BUA 408	MANG DECISION MAKING	C03	05	0800-1005	T/F	TBA
		C04	05	E845-1050	M/W	TBA
		C05	05	E620-0825	T/R	TBA
		C01	05	1015-1220	M/R	TURBAN
		C02	05	E845-1050	T/R	GIBBS
BUA 496	POLICY ANALYSIS	C01	05	0800-1015	T/F	
		C02	05	E620-0825	M/W	

ACCOUNTING

ACC 300	ACCT FOR DECISIONS	C01	05	1015-1220	T/F	TBA
		C02	05	0145-1050	T/F	TBA
		C03	05	E620-0825	T/R	TBA
		C04	05	E845-1050	T/R	TBA
ACC 401	FIN ACCTG INTERM I	C01	05	1015-1220	M/R	TBA
		C02	05	0145-0350	M/R	TBA
		C03	05	E620-0825	M/W	TBA
		C04	05	E845-1050	M/W	TBA
ACC 402	FIN ACCTG INTERM II	C01	05	1015-1220	M/R	TBA
		C02	05	E620-0825	M/W	TBA
		C03	05	0800-1245	S	TBA
		C04	05	0800-1005	M/R	TBA
ACC 405	MANAGERIAL ACCTG	C01	05	E620-0825	M/W	TBA
		C02	05	E620-0825	M/W	TBA
		C03	05	E845-1050	M/W	TBA
		C04	05	0800-1005	T/F	TBA
ACC 406	INCOME TAX ACCTG	C01	05	E620-0825	T/R	TBA
		C02	05	E845-1050	T/R	TBA
		C03	05	1015-1220	T/F	TBA
		C04	05	E620-0825	T/R	TBA
ACC 407	AUDITING	C01	05	E845-1050	T/R	TBA
		C02	05	E620-0825	T/R	TBA
		C03	05	E620-0825	T/R	TBA
		C04	05	E845-1050	T/R	TBA
ACC 408	ACCTG. SYS INT ANAL	C01	05	E620-0825	T/R	TBA
ACC 493	INDEP STUDY IN ACCTG	C01	VAR.	TBA	TBA	TBA
ACC 495	INTERNSHIP IN ACCTG	C01	03	TBA	TBA	TBA
		C02	05	TBA	TBA	TBA
ACC 497	SPECIAL TOPICS ACCTG	C01	VAR.	TBA	TBA	TBA
ACC 501	FINANCIAL ACCTG	C01	05	TBA	TBA	TBA
ACC 502	STAND PRINC FIN ACCTG	C01	05	0800-1245	S	TBA
ACC 503	ADV. FIN ACCTG	C01	01	0400-0605	M/W	TBA
ACC 505	TOPICS MANG ACCTG	C01	05	0400-0605	M/W	TBA
ACC 513	ACCTG INCOME TAXES	C01	05	E845-1050	T/R	TBA
ACC 514	TAX CORP & PARTNERSP	C01	05	E845-1050	M/W	TBA
ACC 526	INTERNATIONAL TAX	C01	05	0800-1245	S	TBA
ACC 612	STUDIES AUDITING	C01	05	E845-1050	M/W	TBA
ACC 613	INCOME TAX PLAN RES	C01	05	E620-0825	T/R	TBA
ACC 693	IND STUDY IN ACCTG	C01	VAR.	TBA	TBA	TBA
ACC 695	MASTER'S PROJECT	C01	05	TBA	TBA	TBA
ACC 697	SPECIAL TOPICS ACCTG	C01	VAR.	TBA	TBA	TBA

FINANCE

FIN 405	POLICIES FIN MGT	C01	05	0145-0350	M/R	
FIN 415	NONBANK FIN INTER MKTS	C01	05	E845-1050	M/W	
FIN 425	SECURITY ANALYSIS	C01	05	E620-0825	T/R	
FIN 493	INDEPT STUDY FINANCE	C01	VAR.	VAR.	VAR.	TBA
FIN 497	SPECIAL TOPICS FINANCE	C01	VAR.	VAR.	VAR.	TBA
FIN 625	SECURITY ANALYSIS	C01	05	E845-1050	T/R	
FIN 655	INTER MANG FINANCE	C01	05	E620-0825	T/R	
FIN 693	INDEP. STUDY IN FIN	C01	VAR.	VAR.	VAR.	TBA
FIN 695	MASTER'S PROJECT	C01	05	VAR.	VAR.	TBA
FIN 697	SPECIAL TOPICS FIN	C01	VAR.	VAR.	VAR.	TBA

INSURANCE

COURSE NO.	TITLE	SECT.	CR.	TIME	DAYS	INSTR.
INS 405	RISK & INSURANCE	C01	05	E620-0825	M/W	TBA
INS 406	LIFE INSURANCE	C01	05	E845-1050	M/W	TBA
INS 493	INDE STUDY INSURANCE	C01	05	ARR.	ARR.	ARR.
INS 497	SPECIAL TOPICS IN INS	C01	05	ARR.	ARR.	ARR.

LAW

LAW 401	LEGAL ENV OF BUS	C01	05	0145-0350	M/R	ERICKSON
		C02	05	E620-0825	M/W	ERICKSON
		C03	05	E845-1050	M/W	TBA
LAW 402	LEGAL ASPECTS MGT	C01	05	E845-1050	T/R	TBA
LAW 493	IND STUDY BUS LAW	C01	05	ARR.	ARR.	ARR.
LAW 497	SPECIAL TOPICS BUS	C01	05	ARR.	ARR.	ARR.
LAW 507	BUSINESS LAW REVIEW	C01	05	E620-0825	T/R	TBA
LAW 693	INDEP STUDY BUS LAW	C01	05	ARR.	ARR.	ARR.
LAW 697	SPECIAL TOPICS IN BUS	C01	05	ARR.	ARR.	ARR.

MANAGEMENT

MAN 410	PRIN OPER RESEARCH	C01	05	E845-1050	T/R	KLEIN
MAN 422	INFO SYS DEVL	C01	05	E620-0825	T/R	MERCER
MAN 451	INTERNATIONAL MGT	C01	05	E620-0825	T/R	NELSON
MAN 453	ORGANIZATION THEORY	C01	05	1015-1220	T/F	BUTKOVICH
MAN 454	INDUSTRIAL RELATIONS	C01	05	0145-0350	M/R	MAGNUSEN
MAN 456	BEHAVIORAL SCI IN MGT	C01	05	E845-1050	M/W	SHAKOOR
MAN 457	PERSONNEL MGT	C01	05	1015-1220	M/R	DAVA
		C02	05	E620-0825	M/W	McCLINTOCK
MAN 493	INDEPENDENT STUDY	C01	05	TBA		ALTMAN
MAN 515	HEALTH PLANNING TECH	C01	05	E620-1050	W	SHELTON
MAN 517	HUMAN RES MGMT HTH INT	C01	05	0800-1245	W	
		C02	05	E620-1050	M	
MAN 519	QUAN ANAL HTH CARE	C01	05	E620-0845	T/R	GIBBS
MAN 550	INFO SYS IN ORGS	C01	05	E620-1050	R	TAGGART
MAN 618	ORGA INFO SYSTEMS	C01	05	E620-1050	R	TAGGART
MAN 643	PERSONNEL TRA & DEVP	C01	05	E620-0825	M/W	DORSETT
MAN 650	LABOR RELATIONS	C01	05	E845-1050	M/W	MAGNUSEN
MAN 662	ORGANIZATIONAL DEVP	C01	05	E845-1050	T/R	BUTKOVICH
MAN 683	HEALTH ENVIRON	C01	05	E620-1050	W	SIMONS
MAN 684	HTH CARE MGMT	C01	05	E845-1050	T/R	COCHRAN
MAN 695	MASTER'S PROJECT	C01	05	TBA		
MAN 697	INDEPENDENT STUDY	C01	1-5	TBA		

MARKETING

MAR 404	INTER MARKETING MGT	C01	05	E845-1050	T/R	VOGEL
		C02	05	1015-1220	M/R	RIBBLETT
MAR 408	INTER MARKETING	C01	05	E620-0825	T/R	VOGEL
MAR 410	CONSUMER BEHAVIOR	C01	05	0145-0350	M/R	TAYLOR
MAR 411	INTRO TO MKTG RESRCH	C01	05	E845-1050	M/W	SEATON
MAR 415	PROMOTION STRATEGY	C01	05	0800-1005	T/F	TBA
MAR 417	CHANNEL SYSTEMS	C01	05	E620-0825	M/W	SMALL
MAR 418	EXPORT MARKETING	C01	05	E845-1050	T/R	TBA
MAR 428	LATIN AMERICAN MKTG	C01	05	0145-0350	T/F	TBA
MAR 433	ISSUES IN MKTG I	C01	05	0400-0605	M/R	TAYLOR
MAR 434	ISSUES IN MKTG II	C01	05	0400-0605	M/R	TAYLOR
MAR 493	INDP STUDY IN MKTG	C01	1-5	ARR.	ARR.	ARR.
		C02	ARR.	ARR.	ARR.	SEATON
		C03	ARR.	ARR.	ARR.	TAYLOR
		C04	ARR.	ARR.	ARR.	VOGEL
MAR 495	MKTG INTERNSHIP	C01	ARR.	ARR.	ARR.	ARR.
MAR 497	SPECIAL TOPICS MKTG	C01	05	ARR.	ARR.	ARR.
MAR 611	INTERNATIONAL MKTG	C01	05	E620-0825	T/R	TBA
MAR 693	INDP STUDY IN MKTG	C02	ARR.	ARR.	ARR.	SEATON
		C03	ARR.	ARR.	ARR.	TAYLOR
		C04	ARR.	ARR.	ARR.	VOGEL
MAR 697	SPECIAL TOPICS MKTG	C01	05	ARR.	ARR.	ARR.

PUBLIC ADMINISTRATION

PAD 310	ORGA GROUP PROCESSES	C01	05	E620-1050	W	TWIGG
PAD 320	INDV GROWTH & DEVELOP	C01	05	E620-1050	T	TANNER
PAD 400	CONCEPTS & ISSUES PA	C01	05	E620-1050	R	TWIGG
PAD 493	INDP STUDY PUBLIC ADM	C01	ARR.	ARR.	ARR.	ARR.
		C02	ARR.	ARR.	ARR.	HEISE
		C03	ARR.	ARR.	ARR.	PARK
		C04	ARR.	ARR.	ARR.	PATKA
		C05	ARR.	ARR.	ARR.	SUTTJA
		C06	ARR.	ARR.	ARR.	TANNER
PAD 550	VALUES IN TECHNOLOGY	C01	05	E620-1050	M	TANNER/MENDEL
PAD 560	AMER MILITARY ESTAB	C01	05	E620-0825	T/R	HEISE
PAD 611	DECISION THEORY PRAC.	C01	05	E620-1050	R	PATKA
PAD 616	DEVELOPMENT ADMIN	C01	05	E620-0825	M/W	SUTTJA
PAD 619	PERS GROWTH & DEVELOP	C01	05	E620-1050	T	PATKA
PAD 620	PA & THEORIES ORGA	C01	05	E620-0825	M/W	PARK
PAD 628	BUDGET & ADMIN PROC	C01	05	E845-1050	M/W	PARK
PAD 681	RESEARCH METHODS	C01	05	E845-1050	T/R	HEISE
PAD 693	INDP STUDY PUBLIC ADM	C01	ARR.	ARR.	ARR.	ARR.
		C02	ARR.	ARR.	ARR.	HEISE
		C03	ARR.	ARR.	ARR.	PARK
		C04	ARR.	ARR.	ARR.	PATKA
		C05	ARR.	ARR.	ARR.	SUTTJA
		C06	ARR.	ARR.	ARR.	TANNER

REAL ESTATE

COURSE NO.	TITLE	SECT.	CR.	TIME	DAYS	INSTR.
RES 390	INTRODUCTION TO RES	C01	05	TBA	M/R	TBA
RES 391	REAL ESTATE LAW	C01	05	E845-1050	M/W	MACKOUL
RES 493	INDEP STUDY IN RES	C01	ARR.	ARR.	ARR.	ARR.
		C02	ARR.	ARR.	ARR.	DAVIS
		C03	ARR.	ARR.	ARR.	ROBERTSON
RES 507	REAL ESTATE APPRAISAL	C01	05	0400-0605	T/R	ROBERTSON
RES 509	REAL ESTATE INVESTMENT	C01	05	0140-0345	M/R	STICH
RES 671	INDUSTRIAL RES I	C01	05	E620-0825	M/W	KRUEGER
RES 686	SEMINAR IN RES VALU	C01	05	0400-0605	M/W	ROBERTSON
RES 687	SEMINAR REGION PLAN	C01	05	E845-1050	M/W	BLOMERS
RES 693	INDEPENDENT STUDY	C01	ARR.	ARR.	ARR.	ARR.
		C02	ARR.	ARR.	ARR.	DAVIS
		C03	ARR.	ARR.	ARR.	ROBERTSON
RES 695	MASTERS PROJECT	C01	ARR.	ARR.	ARR.	TBA

TRANSPORTATION

TRA 405	TRANSPORT SYS & SERV	C01	05	E620-0825	T/R	TBA
TRA 441	AIR TRANSPORTATION	C01	05	0800-1225	S	TBA
		C02	05	E845-1050	T/R	TBA
TRA 493	INDP STUDY IN TRANS	C01	ARR.	ARR.	ARR.	ARR.
TRA 495	TRANSPORTATION INERN	C01	05	ARR.	ARR.	NICHOLS
TRA 497	SPECIAL TOPICS TRANS	C01	05	ARR.	ARR.	ARR.

URBAN STUDIES

URB 493	INDP STUDY URB & REG	C01	ARR.	ARR.	ARR.	ARR.
URB 497	SPECIAL TOP URB REG	C01	ARR.	ARR.	ARR.	ARR.

GRADUATE STUDIES

MBA 605	FINAN ACCTG ANALYSIS	C01	05	E620-0825	M/W	TBA
MBA 607	QUANTITVE METHODS	C01	05	E845-1050	T/R	MEREDITH
MBA 615	WOR DYN & ORGANI	C01	05	E620-0825	T/R	TBA
MBA 617	ORGANIZATIONAL AVAL	C01	05	E620-0825	T/R	ALTMAN
MBA 625	MGT DECISION MAKING	C01	05	E845-1050	T/R	HEBERT
MBA 626	ORGA INFO SYSTEMS	C01	05	E845-1050	M/W	SILBEY
MBA 627	ACCTG DECISION MAKING	C01	05	0400-0605	T/R	TBA
MBA 636	MKTG MANAGEMENT	C01	05	E620-0825	M/W	SEATON
MBA 693	INDIVIDUAL STUDY	C01	05	TBA	TBA	TBA
MBA 697	SPECIAL TOPICS	C01	05	TBA	TBA	TBA
MBA 699	POLICY ANALYSIS	C01	05	E620-0825	M/W	CAPITMAN
MAN 558	SEMINAR IN PER MGT	C01	05	E600-1050	W/R	TBA

SCHOOL OF EDUCATION

EDU 305	SCHOOLING IN AMERICA	C01	05	0800-1005	M/R	TBA
		C02	05	1015-1220	M/R	TBA
		C03	05	1015-1220	T/F	TBA
		C04	05	E845-1050	M/W	TBA
		C05	05	E620-0825	T/R	TBA
EDU 311	GEN TCHG LAB I **	C01	05	0800-1005	T/F	TBA
		C02	05	1015-1220	M/R	TBA
		C03	05	1015-1220	T/F	TBA
		C04	05	0400-0605	M/R	TBA
		C05	05	E620-0825	T/R	TBA
EDU 312	GEN TCHG LAB II	C01	05	0800-1005	M/R	TBA
		C02	05	0800-1005	T/F	TBA
		C03	05	1015-1220	M/R	TBA
		C04	05	1015-1220	T/F	TBA
		C05	05	0145-0350	M/R	TBA
		C06	05	E820-1045	M/W	TBA
		C07	05	E620-0825	T/R	TBA
EDU 505	INSTR TECHNOLOGY	C01	04	E620-1020	M	TBA
EDU 507	ANALYSIS & APP ED RES	C01	04	E620-1020	W	GAY/GALLAGHER/GREENBERG
EDU 509	NAT EDUC SYSTEMS	C01	04	E620-1020	W	FARRELL
EDU 517	MEAS & EVAL IN EDUC	C01	04	E620-1020	M	GAY
EDU 595	INDIVIDUAL STUDY	C01	VAR	TBA	TBA	OLIVA

** EDU 311 HAS A TWO-HOUR PER WEEK CLINICAL LABORATORY WHICH WILL MEET ON WEDNESDAYS OR THURSDAYS. THE LAB WILL BE ASSIGNED ON THE FIRST DAY OF CLASS.

EDUCATIONAL ADMINISTRATION and SUPERVISION

EDA 605	ORG & OPER PUB SC SYS	C01	04	E620-1020	M	SPIVA
EDA 605	ORG & OPER PUB SC SYS	C02	04	E620-1020	R	FISHER
EDA 605	ORG & OPER PUB SC SYS	C03	04	E620-1020	W	LUTTERBIE
EDA 616	STAFF DEV PROG URB SCH	C01	04	E620-1020	R	KAMPSNIDER
EDA 695	SUPER FIELD EXPR	C01	VAR	TBA	TBA	FISHER
EDA 698	IND STUDY SCH ADM/SPV	C01	VAR	TBA	TBA	OLIVA

CHILDHOOD EDUCATION

EEL 306 *	AESTHETIC EXPR CHILD	C01	05	E400-0605	M/R	PENNINGTON/WAGNER
EEL 307 *	HEALTH PHYS ED CHILD	C01	05	1015-1220	M/R	TBA
EEL 307 *	HEALTH PHYS ED CHILD	C02	05	E620-0825	T/R	TBA
EEL 318 *	EXPR ART ELEM SCHOOL	C01	05	0400-0605	M/R	PENNINGTON
EEL 319 *	EXPR MUSIC ELEM SC	C01	05	1015-1220	M/R	WAGNER
EEL 401 *	COMMUNICATION SKILLS I	C01	05	E620-0825	M/W	REMBERT
EEL 401 *	COMMUNICATION SKILLS I	C02	05	0800-1005	M/R	GIROUCHARRI
EEL 402 *	COMMUNICATION SKILLS II	C01	05	1015-1220	T/F	SULLIVAN
EEL 402 *	COMMUNICATION SKILLS II	C02	05	E400-0605	M/R	TBA
EEL 411 *	DMLP ATTIT SKILL INQ I	C01	05	0145-0350	M/R	REICHBACH
EEL 411 *	DMLP ATTIT SKILL INQ I	C02	05	E620-0825	T/R	TBA
EEL 412 *	DMLP ATTIT SKILL INQ II	C01	05	1015-1220	M/R	NOVILLIS/CAMPBELL
EEL 412 *	DMLP ATTIT SKILL INQ II	C02	05	0800-1005	T/F	NOVILLIS/CAMPBELL
EEL 425 *	STUDENT TEACHING	C01	15	TBA	TBA	TBA
EEL 501 *	DIAG OF READ DIFFIC	C01	05	E620-1050	T	TBA
EEL 595 *	INDEPENDENT STUDY	C01	1-5	TBA	TBA	TBA

COURSE NO.	TITLE	SECT.	CR.	TIME	DAYS	INSTR.
EEL 605 *	CURR DESIGN CHILD ED	C01	04	E620-1050	M	VIGILANTE
EEL 616 *	INSTRUCTION IN SC	C01	04	E620-1050	T	CAMPBELL
EAR 405	SPEC TEACH LAB:ART K-6	C01	05	0800-1005	M/R	PENNINGTON
EAR 416	SPEC TEACH LAB:ART 7-12	C01	05	0145-0350	M/R	MUSGRAVE
EAR 425	STUDENT TEACH: ART	C01	15	TBA	TBA	MUSGRAVE
EAR 607	ORG & COORD ART PGMS	C01	04	E620-1050	T	MUSGRAVE
MUE 406	SPEC TEACH LAB II:MUS	C01	05	1015-1220	T/F	TESTA
MUE 425	STUDENT TEACHING	C01	15	TBA	TBA	TESTA
MUE 616	METH OF MUS TEACH	C01	04	E620-1050	W	TESTA
ECE 501 *	EARLY CHILD ED PGMS	C01	05	0400-0605	M/R	MARGOLIN
ECE 502 *	CUR INSTR EARLY CHLD	C01	05	0400-0605	T/F	MENDOZA
ECE 595 *	IND ST EARLY CHLD	C01	1-5	TBA	TBA	MARGOLIN
ECE 616	INSTR IN SCIENCE	C01	04	E620-1050	T	CAMPBELL

* REGISTRATION BY PERMISSION OF DIVISION CHAIRMAN ONLY OR CHILDHOOD EDUCATION ADVISOR.

HEALTH, PHYSICAL EDUCATION, RECREATION

PHE 405	SPECIAL TEACH LAB	C01	05	1015-1220	M/R	BLUCKER
PHE 407	COACHING SPORTS	C01	05	0800-1005	M/R	WONDERLING
PHE 411	ACTIVITIES	C01	05	1015-1220	M/R	LOPEZ
PHE 416	ATHLETIC TRAINING	C01	05	1015-1220	T/F	BARTON
PHE 425	STUDENT TEACHING	C01	15	TBA	TBA	BLUCKER
PHE 436	EVALUATION OF PE	C01	05	0800-1005	T/F	LOPEZ
PHE 506	PERCEP MTR LEARN	C01	04	E620-1020	T	CHADWICK
PHE 509	HISTORY OF PE	C01	04	E620-1020	W	FLEMING
PHE 595	INDIVIDUAL STUDY	C01	1-5	TBA	TBA	HARTMAN
PHE 695	SUPER FIELD EXP	C01	05	TBA	TBA	FLEMING
PRM 305	PARK & REC MGMT	C01	05	0800-1005	M/R	PERRY
PRM 425	INTERNSHIP	C01	05	TBA	TBA	PERRY
PRM 505	PGM ADM PARKS & REC	C01	04	E620-1020	T	PERRY
PRM 595	INDIVIDUAL STUDY	C01	05	TBA	TBA	PERRY
HED 405	SPECIAL TEACH LAB	C01	05	0800-1005	M/R	BENNETT
HED 406	HEALTHFUL LIV: PERS	C01	05	0800-1005	T/F	BENNETT
HED 407	HEALTHFUL LIV: COMM	C01	05	1015-1220	M/R	MERCHANT
HED 425	STUDENT TEACHING	C01	15	TBA	TBA	MERCHANT
HED 507	EDU APPR TO HEALTH	C01	04	E620-1020	W	MERCHANT
HED 595	INDIVIDUAL STUDY	C01	1-5	TBA	TBA	BENNETT
HED 695	SUPER FIELD EXP	C01	05	TBA	TBA	BENNETT

SECONDARY EDUCATION

EDS 405	SPEC TEACH LAB:ENG	C01	05	1015-1220	M/R	SHOSTAK
EDS 406	SPEC TEACH LAB:MATH	C01	05	E620-0825	M/W	MCCLINTOCK
EDS 407	SPEC TEACH LAB:MOD LNG	C01	05	0400-0605	M/R	TBA
EDS 408	SPEC TEACH LAB:SCI	C01	05	0400-0605	T/F	MARTINEZ
EDS 409	SPEC TEACH LAB:SOC ST	C01	05	1015-1220	M/R	TUCKER
EDS 425	STU TEACH: ENGLISH	C01	15	TBA	TBA	SHOSTAK
EDS 425	STU TEACH: MATH	C02	15	TBA	TBA	MCCLINTOCK
EDS 425	STU TEACH: MOD LANG	C03	15	TBA	TBA	TBA
EDS 425	STU TEACH: SCIENCE	C04	15	TBA	TBA	MARTINEZ
EDS 425	STU TEACH: SOC STUD	C05	15	TBA	TBA	TUCKER
EDS 425	STU TEACH: Other	C06	15	TBA	TBA	TBA
EDS 595	IND STUDY: ENGLISH	C01	1-5	TBA	TBA	SHOSTAK
EDS 595	IND STUDY: MATH	C02	1-5	TBA	TBA	MCCLINTOCK
EDS 595	IND STUDY: MOD LANG	C03	1-5	TBA	TBA	TBA
EDS 595	IND STUDY: SCIENCE	C04	1-5	TBA	TBA	MARTINEZ
EDS 595	IND STUDY: SOC STUD	C05	1-5	TBA	TBA	TUCKER
EDS 595	IND STUDY: Other	C06	1-5	TBA	TBA	TBA
EDS 619	TEA SOC STUD SEC SCH	C01	04	E620-1050	R	TUCKER
EDS 695	SUPER FIELD EXPR	C01	5-15	TBA	TBA	TBA
EDS 614	SPECIAL LAB: ENGLISH	C01	04	E620-1050	M	SHOSTAK

PSYCHO-EDUCATIONAL SERVICES

EEC 306	INTRO EXCEP CHILD	C01	05	1015-1220	M/R	TBA
EEC 306	INTRO EXCEP CHILD	C02	05	E620-1050	W	NATHANSON
EEC 309	INTRO LANG DVLPMT	C01	05	0800-1005	M/R	CHEYNEY
EEC 309	INTRO LANG DVLPMT	C02	05	E620-1050	M	CHEYNEY
EEC 405	ACA SKLS EXCEP CHLD I	C01	05	1015-1220	T/F	LUCKY
EEC 406	ACA SKLS EXCEP CHLD II	C01	05	0800-1005	M/R	CROCKER
EEC 411	BEHAV APP CLSRM LRN I	C01	05	E620-1050	M	RYAN
EEC 411	BEHAV APP CLSRM LRN I	C02	05	0800-1005	T/F	ALVAREZ
EEC 412	BEHAV APP CLSRM LRN II	C01	05	1015-1220	M/R	ALVAREZ
EEC 425	STUDENT TEACHING	C01	15	TBA	TBA	CROCKER
EEC 425	STUDENT TEACHING	C02	15	TBA	TBA	LUCKY
EEC 425	STUDENT TEACHING	C03	15	TBA	TBA	TBA
EEC 425	STUDENT TEACHING	C04	15	TBA	TBA	TBA
EEC 425	STUDENT TEACHING	C05	15	TBA	TBA	TBA
EEC 595	INDEPENDENT STUDY	C01	3-5	TBA	TBA	ALVAREZ
EEC 595	INDEPENDENT STUDY	C02	3-5	TBA	TBA	ANDERSON
EEC 595	INDEPENDENT STUDY	C03	3-5	TBA	TBA	CHEYNEY
EEC 595	INDEPENDENT STUDY	C04	3-5	TBA	TBA	CROCKER
EEC 595	INDEPENDENT STUDY	C05	3-5	TBA	TBA	GAVILAN
EEC 595	INDEPENDENT STUDY	C06	3-5	TBA	TBA	LUCKY
EEC 595	INDEPENDENT STUDY	C07	3-5	TBA	TBA	NATHANSON
EEC 595	INDEPENDENT STUDY	C08	3-5	TBA	TBA	RYAN
EEC 595	INDEPENDENT STUDY	C09	3-5	TBA	TBA	SMITH
EEC 606	PGM EVAL SPEC ED	C01	04	E400-0605	M/R	GAVILAN
EEC 608	EXCEP CHLD & YOUTH	C01	04	E620-1050	R	NATHANSON
EEC 695	SUPER FIELD EXPR	C01	5-10	TBA	TBA	TBA

COURSE NO.		TITLE	SECT.	CR.	TIME	DAYS	INSTR.
PPS 505		PROF PROBLEMS	C01	02	E400-0605	T	ANDERSON
PPS 505		PROF PROBLEMS	C02	02	E400-0605	T	BLAKLEY
PPS 505		PROF PROBLEMS	C03	02	E400-0605	T	KENNEDY
PPS 506		INTRO COUNSELING	C01	05	E620-1050	T	TBA
PPS 507		HUM INTER I: PERS DMLP	C01	03	0145-0350	T/F	BLAKLEY
PPS 507		HUM INTER I: PERS DMLP	C02	03	E620-0825	M/W	TBA
PPS 601		BEHAV COUNS/CONSUL I	C01	05	0145-0350	M/R	GAVILAN
PPS 601		BEHAV COUNS/CONSUL I	C02	05	E620-1050	R	RYAN
PPS 621		ASSESS OF BEHAV I	C01	05	E620-1050	T	ANDERSON
PPS 622		ASSESS OF BEHAV I I	C01	05	E620-1050	R	SMITH
PPS 626		PGM EVAL IN SPEC ED	C01	04	E400-0605	M/R	GAVILAN
PPS 695		SUPER FIELD EXPR	C01	VAR	TBA	TBA	ANDERSON
PPS 695		SUPER FIELD EXPR	C02	VAR	TBA	TBA	BLAKLEY
PPS 695		SUPER FIELD EXPR	C03	VAR	TBA	TBA	KENNEDY
PPS 698		INDEPENDENT STUDY	C01	3-5	TBA	TBA	ANDERSON
PPS 698		INDEPENDENT STUDY	C02	3-5	TBA	TBA	BLAKLEY
PPS 698		INDEPENDENT STUDY	C03	3-5	TBA	TBA	KENNEDY
PPS 698		INDEPENDENT STUDY	C04	3-5	TBA	TBA	SMITH

VOCATIONAL and TECHNICAL EDUCATION

EVO 305		FOUND OF VOC EDUC	C01	05	E620-1050	W	MOHAMED
EVO 306		COURSE PLAN IN VOC ED	C01	05	0145-0350	M-R	SMITH, K.
EVO 406		SPEC TEACH LAB	C01	05	0400-0605	M	MOHAMED/SCHMITT
EVO 501		EMERG EMP CAREER ED	C01	04	E620-1020	W	TBA
EJO 504		EDUCATIONAL MEDIA	C01	05	0400-0605	M-R	HAUENSTEIN
EVO 506		TRENDS & ISS VOC ED	C01	04	E620-1020	R	SCHMITT
EVO 515		INSTR PROC VOC ED	C01	04	E620-1020	T	MOHAMED
EVO 516		COOPER VOC ED PGMS	C01	04	E620-1020	M	SCHMITT
EVO 517		SUPER & COORD VOC ED	C01	04	E620-1020	W	ZIEL
EVO 519		LAB ACTIV TEA HAND	C01	04	E620-1020	T	SIPES
EVO 595		INDIVIDUAL STUDY	C01	1-5	TBA	TBA	TBA
EVO 616		RES IN VOC & ADULT ED	C01	04	E620-1020	M	SMITH, K/HAUENSTEIN
EVO 695		SUPER FIELD EXPR	C01	VAR	TBA	TBA	TBA
EIA 405		INSTR IN INDUS ARTS	C01	05	E620-1020	W	SMITH, K/HAUENSTEIN
EIA 595		INDIVIDUAL STUDY	C01	VAR	TBA	TBA	TBA
HEE 405		INSTR IN HOME ECON	C01	05	0800-1005	T-F	STAFF
HEE 406		SPECIAL TEACH LAB	C01	05	E400-0500	W	STAFF
HEE 505		TRENDS IN VOC HOME EC	C01	04	E620-1020	M	CRABTREE
HEE 595		IND STUDY VOC HOME EC	C01	VAR	TBA	TBA	STAFF
EAD 507		PRIN & PRAC ADULT ED	C01	04	E620-1020	T	TBA
EAD 507		PRIN & PRAC ADULT ED	C02	04	1015-1220	T-F	DIVITA
EAD 519		PGM DMLP AD ED: COMM	C01	04	E620-1020	R	DIVITA
EAD 595		INDIVIDUAL STUDY	C01	VAR	TBA	TBA	DIVITA
EAD 596		SUPER FIELD EXPR	C01	VAR	TBA	TBA	DIVITA

HOME ECONOMICS

CLT 335		BASIC CLOTHING CONST	C01	05	0800-0300	S	STAFF
			C02	05	0830-0430	W	SMITH
CLT 336		BASIC PAT SEL & ALTR	C01	03	0145-0605	R	OGLE
			C02	03	E620-1050	R	OGLE
CSN 495		IND STUDY IN CLOTHING	C01	VAR.		ARR.	SMITH
DIN 301		NUTRITION & CULTURE	C01	05	1015-1220	M/R	LOUSTAUNAU
DIN 310		MEAL MANAGEMENT	C01	05	0145-0605	M	BURLEY
			C01	05	0145-0350	F	BURLEY
			C02	05	0145-0605	R	BURLEY
			C02	05	0145-0350	F	BURLEY
DIN 505		DIETETICS & COMM	C01	05	E620-1050	T	CURRY
FCD 301		CHILD DEV INFCY CHILD	C01	05	1015-1220	T/F	GREEN
			C02	05	0400-0605	T/F	MILLIKEN
FCD 505		FAMILY DEVELOPMENT	C01	05	0800-1220	S	MILLIKEN
HEE 405		INSTR. VOC HOME ECON	C01	05	0800-1005	T/F	STAFF
HEE 406		SPECIAL TEACHING LAB	C01	05	0400-0500	W	MORROW
HEE 505		TRENDS IN VOC HOM ECON	C01	04	E620-1000	M	CRABTREE
HEE 595		IND STUDY IN VOC ECON	C01	VAR.		ARR.	STAFF
HMF 306		CONSUMER RESOURCES MGT	C01	03	E620-0920	W	STAFF

SCHOOL OF TECHNOLOGY

CONSTRUCTION

CSN 300		SURVEYING	C01	05	0145-0350	T/F	CHAUDHARI
CSN 301		CONST. MATERIALS	C01	03	E750-0910	M/W	STAFF
CSN 306		CONST. METHODS & EQPT	C01	03	E620-0740	T/R	CLARK
CSN 320		CONST. COST ESTIMATE	C01	05	E845-1050	M/W	HELMKE
CSN 321		MGMT OF CONST COSTS	C01	03	0800-0920	T/F	CLARK
CSN 326		CODES & SPECS	C01	05	E845-1050	T/R	STAFF
CSN 332		LEGAL ASPECTS OF CONST	C01	03	E750-0910	T/R	STAFF
CSN 340		SURV OF INTERIOR DSN	C01	03	0800-0920	M/R	HELMKE
CSN 350		MECH OF MATERIALS	C01	05	0800-1005	M/R	CHAUDHARI
CSN 352		STRENGTH OF MATERIALS	C01	03	E620-0740	M/W	CHAUDHARI
			C02	03	1100-1220	T/F	STAFF
CSN 357		INDET STRUCT ANALYSIS	C01	03	E620-0740	M/W	THOMPSON
CSN 370		ARCH CONCEPTS & CONST	C01	03	E620-0740	T/R	MAJZUB
CSN 372		INTERDISC ASP OF HOUS	C01	03	0930-1050	M/R	MAJZUB
CSN 400		ROAD CONSTRUCTION	C01	03	E920-1040	T/R	STAFF

COURSE NO.		TITLE	SECT.	CR.	TIME	DAYS	INSTR.
CSN 404		BLDG CONSTRUCTION	C01	03	0930-1050	T/F	HELMKE
CSN 450		STRUCTURAL SYSTEMS	C01	05	0145-0350	M/R	STAFF
CSN 452		TIMBER DESIGN	C01	03	1100-1220	M/R	THOMPSON
CSN 455		REINFC CONCRETE DSN	C01	05	E845-1050	M/W	THOMPSON
CSN 495		INDEPENDENT STUDY	C01	VAR	TBA		STAFF
CSN 497		SPECIAL TOPICS	C01	VAR	TBA		STAFF
CSN 513		ADV GEOM DSN OF HAYS	C01	05	0145-0350	T/F	STAFF
CSN 564		COMPUTER APPL IN CONST	C01	05	0400-0605	M/R	CLARK
CSN 570		INNOV IN BLDG TECH	C01	03	1100-1220	T/F	MAJZUB

ENGINEERING TECHNOLOGY

COT 300		LOGIC DESIGN	C01	05	E845-1050	T/R	STAFF
COT 310		TELEMETRY & TELECOMMUN	C01	05	E845-1050	M/W	STORY
EET 314		ELECT SYSTM IN CONSTR	C01	05	E920-1040	T/R	STAFF
EET 320		PROCESS CONTROL TECH	C01	05	E620-0825	M/W	CEREJJO
EET 328		SOLID STATE DEVICES	C01	05	E620-0825	T/R	STAFF
EET 340		MODERN COMMUNICAT TECH	C01	05	E620-0825	M/W	STAFF
EET 416		PROCESS CONTROL INSTR	C01	05	E845-1050	M/W	CEREJJO
EET 430		INTEGRATED CIR DES APP	C01	05	E620-0845	M/W	STORY
ENT 495		INDEPENDENT STUDY	C01	ARR	ARR		STAFF
ENT 497		SPECIAL TOPICS	C01	ARR	ARR		STAFF
ITE 495		INDEPENDENT STUDY	C01	ARR	ARR		STAFF
ITE 497		SPECIAL TOPICS	C01	ARR	ARR		STAFF
MET 361		HEAT TRANSFER	C01	05	E845-1050	M/W	COULTER
MET 362		MECHANICAL DESIGN	C01	05	E845-1050	M/W	COULTER

ENVIRONMENTAL TECHNOLOGY SYSTEMS

AGT 444		NOISE	C01	05	0400-0605	M/W	STAFF
EPR 350		IND & ENV TOXICOLOGY	C01	05	0145-0350	M/R	LOUSTAUNAU
EPR 375		ENVIRONMENTAL MGMT	C01	05	1015-1220	T/F	JACKSON
EPR 440		VECTOR & PEST CONTROL	C01	05	E845-1050	T/R	BRUSUELAS
ETS 495		INDEPENDENT STUDY	C01	VAR	TBA		STAFF
ETS 497		SPECIAL TOPICS	C01	VAR	TBA		STAFF
TRT 300		INTRO TRANS SYSTEMS	C01	05	0145-0350	T/F	ISIBOR
TRT 412		TRAFFIC CONTROL DEVS	C01	05	E620-0825	T/R	STAFF
UPT 316		URB PLANNING CONCEPTS	C01	05	E620-0825	M/W	ISIBOR
WGT 330		WATER RESOURCES	C01	05	E620-0825	M/W	BARKER
WGT 331		HYDRAULICS	C01	05	E845-1050	M/W	WARNER
WGT 365		AQUATIC TECHNOLOGY I	C01	05	0800-1220	S	BARKER
WGT 450		WASTEWATER PROCESS I	C01	05	0145-0350	T/F	VILLATE
WGT 452		WASTWTR TREATMNT TECH	C01	05	E620-0825	T/R	VILLATE
WGT 468		MARINE PRODUCTS	C01	05	0400-0605	T/R	LOUSTAUNAU

INDUSTRIAL TECHNOLOGY

CLT 335		BAS CLOTHING CONSTR	C01	05	0800-0300	S	STAFF
			C02	05	0830-0430	W	SMITH
CLT 336		BAS PAT SEL DES & ALT	C01	03	0145-0605	R	OGLE
			C02	03	E620-1050	R	OGLE
COM 320		FEATURE WRITING	C01	05	E845-1050	T/R	COUCH
COM 321		INTERVIEW TECHNIQUES	C01	05	E620-0825	M/W	STAFF
COM 350		EDITING & MAKEUP	C01	05	E620-0825	T/R	STAFF
COM 380		NEWS REPORTING	C01	05	E845-1050	M/W	STAFF
COM 470		COMMUNICATIONS TECH	C01	05	0145-0605	W	WILSON
COM 497		SP TPC: MEDIA IN SOC	C01	05	1015-1220	M/R	COUCH/MEYER
			C02	05	ARR	ARR	WILSON
IAT 307		REPROGRAPHICS	C01	05	0900-0400	S	BROEKHUIZEN
IAT 409		MATERIALS OF INDUSTRY	C01	05	E620-0825	M/W	FAIRBANKS
IAT 415		DRAFTING I	C01	05	E620-0825	M/W	HOUTCOOPER
IAT 416		DRAFTING II	C01	05	E620-0825	M/W	STAFF
IAT 417		MECH POWER SYSTEMS	C01	05	E620-0825	T/R	FAIRBANKS
IAT 418		ELE/ELC POWER SYSTEMS	C01	05	E845-1050	M/W	HOUTCOOPER
ITE 320		PRODUCTION CONTROL	C01	05	E845-1050	T/R	STAFF
ITE 321		PRODUCTION PLANNING	C01	05	E620-0825	T/R	STAFF
ITE 326		PLANT LAYOUT	C01	05	E845-1050	M/W	STAFF
ITE 351		CONSTRUCTION SAFETY	C01	03	0830-1100	S	AURIOLLES
ITE 371		INDUSTRIAL OPERATIONS	C01	05	E620-0825	M/W	THOMAS
ITE 374		IND INFORMATION SYSTEM	C01	05	E620-0825	T/R	STAFF
ITE 400		MATERIALS HANDLING	C01	05	E845-1050	T/R	STAFF
ITE 471		PERSONNEL RELATIONS	C01	05	0145-0350	M/R	DeGROOT
ITE 474		INDUSTRY SUPERVISION	C01	05	E845-1050	M/W	AURIOLLES
ITE 490		UPGRADING WOMEN IN IND	C01	05	E620-0825	M/W	DeGROOT

TECHNOLOGY

TEY 302		INVENTING THE FUTURE	C01	05	0400-0605	M/R	MENDELL
TEY 320		TECH FOR OCC THERAPY	C01	05	0800-1220	M/R	STAFF
TEY 326		SURVEY OF ELECTRONICS	C01	05	0400-0605	M/R	STAFF
TEY 350		IND FINANCIAL DECS I	C01	05	E845-1050	T/R	STAFF
TEY 370		INTR EIW TECH SYSTEMS	C01	05	1015-1220	M/R	STAFF
			C02	05	E845-1050	M/W	CARTER
TEY 397		SP TPC: MGMT SOC TECH	C01	05	0145-0350	M/R	MENDELL

SCHOOL of HEALTH and SOCIAL SERVICES

CRIMINAL JUSTICE

CRJ 300		OVERVIEW CRIM JUSTICE	C01	05	1015-1220	M/R	SNOW
			C02	05	0145-0350	M/R	CLARK
CRJ 301		NATURE & CAUSES CRIME	C01	05	0800-1005	M/R	CLARK
			C02	05	0145-0350	M/R	HAMERSLEY
			C03	05	E620-0825	M/W	HAMERSLEY
CRJ 302		ROLES LAW ENFORCEMENT	C01	05	1015-1220	T/F	RAFKY
CRJ 303		PROJUD POLICY MAKING	C01	05	E620-1050	R	LeGRANDE
CRJ 311		ORGANIZATION & ADMIN	C01	05	1015-1220	T/F	
			C02	05	E845-1050	T/R	

COURSE NO.	TITLE	SECT.	CR.	TIME	DAYS	INSTR.
CRJ 321	DELINQUENCY PREVENT	C01	05	0400-0605	M/R	SNOW
CRJ 401	CORRECTIN PHILOSOPHY	C01	05	0800-1005	T/F	WILBANKS
		C02	05	0400-0605	M/R	WILBANKS
		C03	05	E845-1050	M/W	MILLER
CRJ 402	METHODS OF RESEARCH	C01	05	0145-0350	M/R	RAFKY
CRJ 403	INSTITUTIONAL CHANGE	C01	05	E620-1050	T	CAWLEY
CRJ 421	PROBATION PAROLE	C01	05	0800-1005	M/R	MILLER
CRJ 440	FIELD INTERNSHIP	C01	VAR.	VAR.	VAR.	MARQUEZ
CRJ 495	DIRECTED READING	C01	VAR.	VAR.	VAR.	WILBANKS
		C02	VAR.	VAR.	VAR.	SNOW
		C03	VAR.	VAR.	VAR.	STEINHAUSER
		C04	VAR.	VAR.	VAR.	SHEARN
CRJ 496	INDEPENDENT RESEARCH	C01	VAR.	VAR.	VAR.	RAFKY
		C02	VAR.	VAR.	VAR.	CLARK
		C03	VAR.	VAR.	VAR.	MILLER
CRJ 500	DIRECTED RESEARCH	C01	VAR.	VAR.	VAR.	HANEWICZ

DIETETICS and NUTRITION

DIN 300	ORIEN CLINICAL DIET	C01	03	0145-0430	W	WILSON
DIN 301	NUTRITION AND CULT	C01	05	1015-1220	M/R	LOUSTAUNAU
DIN 310	MEAL MGT & SERVICE	C01	05	0145-0605	M	BURLEY
		C01	05	0145-0350	F	BURLEY
		C02	05	0145-0605	R	BURLEY
		C02	05	0145-0350	F	BURLEY
DIN 401	NUTRITION II	C01	05	0145-0350	T/F	LOUSTAUNAU
DIN 440	CLINIC COMM NUTRI I	C01	05	1015-1220	T/F	BURLEY
DIN 450	SPEC PROB DIET & NUTRI	C01	VAR.	ARR.	ARR.	STAFF
DIN 505	DIETETICS & COMM	C01	05	E620-1050	T	CURRY
DIN 601	NUTRI DURING LIFE CY	C01	05	E620-1050	M	GRAD. FACULTY
DIN 691	RESEAR METH IN DIETS	C01	03	E620-0920	R	KUPSINEL
DIN 695	SUPERV STUDY IN DIETS	C01	VAR.	ARR.	ARR.	CURRY
DIN 698	THESIS IN DIETETICS	C01	VAR.	ARR.	ARR.	KUPSINEL

HEALTH SCIENCE

HSM 304	HEALTH SOC SERV SYS	C01	05	1015-1220	T/F	BENEDICT
		C02	05	0145-0350	M/R	GRENNARD
		C03	05	E620-0825	T/R	GRENNARD
HSM 390	INDIVIDUAL STUDY	C01	10	HRS ARR.	TBA	JANIS
HSM 400	MGT FOR HEALTH PROF	C01	05	0800-1005	T/F	COCHRAN
HSM 401	INFORMATION SYSTEMS	C01	05	1015-1220	T/F	COCHRAN
HSM 481	CONSUMER HEALTH PROTC	C01	05	E620-0825	T/R	BENEDICT
HSM 482	HEALTH LEADERSHIP	C01	02	0145-0350	R	FOSTER
HSM 483	CONSUMER AND SER SYS	C01	05	1015-1220	M/R	JANIS
HSM 484	FAMILY HEALTH CENTERS	C01	03	0145-0350	W	ORTIZ
HSM 495	LEGAL ASPECTS HT PRO	C01	05	E620-1050	M	SIMON
HSM 515	PLANNING FOR HT ORGA	C01	05	E620-1050	W	SHELTON
HSM 517	HUMAN RESOURCE MGT	C01	05	0800-1220	W	TBA

MEDICAL TECHNOLOGY

MDT 401	CLINICAL CHEM METHODS	C01	02	0800-0850	M/R	M.E. WAID
		L51	03	1030-1220	MTRF	WAID
MDT 404	TEACHING LAB CHEM	L51	04	0200-0550	MTRF	JANET ZINS
		C01	04	1030-1220	T/F	JANET ZINS
		L51	04	0900-1230	TRF	ALTOMARE
MDT 457	PRACTICUM I	L51	04	0900-0950	M/R	WAID
MDT 471	HEMT CORRELATION LAB	C01	02	1030-1220	R	WAID
MDT 474	LECTURES CLINC CHEM	C01	02	1030-1220	R	WAID
MDT 481	ADVANCED CHEMISTRY	C01	03	0900-0950	T/R	ALTOMARE
		C01	03	0900-0950	W	ZINS
MDT 525	INDIVIDUALIZED STUDY	C01	2-5		TBA	WAID
MDT 551	SEMINAR I	C01	01	0800-0850	W	WAID

NURSING

NUR 350	NURSG IN EVOLV SYS	C01	05	0800-1005	T/F	CLOUSTON
NUR 420	NUR ROLE PRCSS CHNG	C01	05	1015-1220	T/F	BEDGIO
NUR 440	INDIVIDUAL STUDY	C01	05	0800-1220	W	KNOWLES
		C02	05	1015-0350	M	THOMAS
		C03	05	E620-1045	R	GESSE
		C01	10	0800-1220	T	TEAM
NUR 450	ADV CLINCL CONCEPTS	C02	10	E620-1045	R	TEAM
		L51	0	0830-0330	R/F	CAVALLO
		L52	0	0830-0330	R/F	LEE
		L53	0	0830-0330	R/F	HAGGERTY
		L54	0	0830-0330	R/F	TBA
NUR 460	COMM HEALTH NURS	C01	10	0800-1220	T	TEAM
		L51	0	0830-0400	R/F	THARPE
		L52	0	0830-0400	R/F	MOONEYHAN
		L53	0	0830-0400	R/F	WHITE
NUR 501	CRISIS INTERVENTION	C01	05	E620-1045	M	THOMAS
NUR 505	DYNAMICS INTERACTION	C01	05	0800-1005	M/R	BEDGIO
NUR 506	EVAL OF NUR PRACTICE	C01	05	1015-1220	M/R	CLOUSTON

OCCUPATIONAL THERAPY

OCT 300	INTRO OCCUP THEORY	C01	03	0400-0605	M	WEINER/MORAN
OCT 315	WEAVING	C01	04	0900-1220	M/R	MORAN/ANTONSON
OCT 325	WEAVING THEREPT ANALY	C01	01	0800-0900	M/R	MORAN/WEINER
OCT 431	PHYSICAL DISABT HTEORY	C01	05	0145-0350	T/F	MORAN
OCT 440	REHAB. SEMINAR	C01	03	0800-1005	T	ANTONSON

PHYSICAL THERAPY

PHT 311	KINISIOLOGY I	C01	03	TBA	TBA	SKOVLY
PHT 330	PHYS DISABILITY THEORY	C01	02	TBA	TBA	ADJUNET
PHT 334	CLINICAL CLERKSHIPS	C01	05	TBA	TBA	JONES
PHT 344	DYN PATIENT THER REL	C01	02	TBA	TBA	CARR
PHT 415	NEUROLOGY & NEUROSURGY	C01	03	TBA	TBA	TBA
		L51	02	TBA	TBA	TBA
		L53	02	TBA	TBA	TBA
		L53	02	TBA	TBA	TBA
PHT 417	CLINICAL NEUROLOGY		02	TBA	TBA	TBA
PHT 426	RESEARCH METHODS DESG	C01	02	TBA	TBA	TBA
PHT 457	ELECTRODIAGNOSIS	C01	03	TBA	TBA	TBA

SOCIAL WORK

COURSE NO.	TITLE	SECT.	CR.	TIME	DAYS	INSTR.
SOW 301	HIS PHI PERSP SOC WLF	C01	05	0800-1220	T	B. SMITH
SOW 302	ISS PROB SOC WLF POL	C01	05	0800-1005	M/R	P. MEYER
		C02	05	0145-0350	T/F	TBA
		C03	05	E620-0825	M/W	TBA
SOW 305	DYN HUM BEHAVIOR SOC I	C01	05	1015-1220	T/F	M. QUERALT
		C02	05	0145-0350	M/R	V. PENDERGRASS
SOW 306	SELF_AWARE MODIF SERV	C01	05	0145-0605	R	P. MEYER
		C02	05	0145-0350	M/R	R. HATTEN
		C03	05	E620-1050	W	R. HATTEN
SOW 307	SOC WORK PRACT SKLL I	C01	05	0145-0605	W	R. JONES
SOW 308	FIELD EXPERIENCE I	C01	10	TBA	TBA	R. JONES
SOW 401	COMMUNITY RESEARCH	C01	05	E620-0825	M/W	V. PENDERGRASS
SOW 405	DYN HUM BEHAVIOR SOC IIC01	05	05	0145-0350	M/R	M. QUERALT
SOW 407	SOC WORK PRACT SKLL II	C01	05	1015-1220	T/F	J. NOOE
SOW 419	FIELD EXPERIENCE II	C01	10	TBA	TBA	Y. BACARISSE
SOW 429	SENIOR PROJECT	C01	VAR	TBA	TBA	R. JONES
		C02	VAR	TBA	TBA	BACARISSE
		C03	VAR	TBA	TBA	SMITH
		C04	VAR	TBA	TBA	QUERALT
		C05	VAR	TBA	TBA	HATTEN
		C06	VAR	TBA	TBA	PENDERGRASS
		C07	VAR	TBA	TBA	NOOE
		C08	VAR	TBA	TBA	MEYER
		C09	VAR	TBA	TBA	TBA
SOW 495	INDIVIDUAL STUDY	C01	VAR	TBA	TBA	R. JONES
		C02	VAR	TBA	TBA	BACARISSE
		C03	VAR	TBA	TBA	SMITH
		C04	VAR	TBA	TBA	QUERALT
		C05	VAR	TBA	TBA	HATTEN
		C06	VAR	TBA	TBA	PENDERGRASS
		C07	VAR	TBA	TBA	NOOE
		C08	VAR	TBA	TBA	MEYER
		C09	VAR	TBA	TBA	TBA
SOW 496	INDEPENDENT RESEARCH	C01	VAR	TBA	TBA	R. JONES
		C02	VAR	TBA	TBA	Y. BACARISSE
		C03	VAR	TBA	TBA	B.A. SMITH
		C04	VAR	TBA	TBA	M. QUERALT
		C05	VAR	TBA	TBA	R. HATTEN
		C06	VAR	TBA	TBA	PENDERGRASS
		C07	VAR	TBA	TBA	J. NOOE
		C08	VAR	TBA	TBA	P. MEYER
		C09	VAR	TBA	TBA	TBA
SOW 500	DIRECTED RESEARCH	C01	VAR	TBA	TBA	R. JONES
		C02	VAR	TBA	TBA	BACARISSE
		C03	VAR	TBA	TBA	SMITH
		C04	VAR	TBA	TBA	QUERALT
		C05	VAR	TBA	TBA	HATTEN
		C06	VAR	TBA	TBA	PENDERGRASS
		C07	VAR	TBA	TBA	NOOE
		C08	VAR	TBA	TBA	MEYER
		C09	VAR	TBA	TBA	TBA
SOW 515	PREVENTION EARLY INT	C01	05	E620-1050	T	NOOE

SCHOOL of HOTEL, FOOD and TRAVEL SERVICES

HRM 535	FOOD BEVG MERCH	C01	05	1015-1220	M/R	HURST
HRM 630	GRADUATE RESEARCH	C01	05	TBA	TBA	LATTIN
TTM 301	FUND OF TOURISM	C01	05	1015-1220	M/R	HUSE
TTM 302	ACCTG TOURISM TRAV MGT	C01	05	E620-0825	T/R	WEBSTER/CONRAD
TTM 303	RETAIL TRAV AGCY MGT	C01	05	0800-1005	T/F	HUSE
TTM 309	INTERNSHIP	C01	05	TBA	TBA	P. DARBY
TTM 310	ADV INTERNSHIP	C01	05	TBA	TBA	P. DARBY
TTM 312	SOCIOLOGY LEISURE	C01	05	E620-0825	M/W	HUSE
TTM 334	WORLD REG. GEOG INR 334C01	05	05	0145-0350	T/F	TBA
HRM 301	MGT ACCT HOSPTY INDUS	C01	05	0800-1005	T/F	TBA
		C02	05	0145-0350	M/R	WEBSTER
		C03	05	E620-0825	M/W	TBA
HRM 304	HOSPTY ACCTG INFO SYSM	C01	05	0800-1005	T/F	CONRADE/WEBSTER
		C02	05	0145-0350	M/R	CONRADE/ILVENTO
HRM 305	OPERATIONS CONTROL	C01	05	0800-1005	M/R	BURRITT
HRM 310	INTRO COMM FOOD SERV	C01	05	0800-1220	W	PRENTISS
		C02	05	0145-0620	W	PRENTISS
HRM 311	VOLUME FEEDING MGT	C01	05	0145-0245	W	HAGENMEYER
HRM 314	CLASSICAL CUISINE	C01	05	0800-1220	T	PRENTISS
HRM 316	RESTAURANT MGT	C01	05	0145-0350	M/R	HURST
HRM 317	BEVERAGE MGT	C01	05	0400-0630	F	GRIER
HRM 318	BASIC MEAT SCIENCE	C01	05	0400-0830	M	BERKOWITZ
HRM 321	CLUB OPERATIONS MGT	C01	05	1015-1220	M/R	ILVENTO/CONRAD
HRM 325	LAW-HOSPITALITY IND	C01	05	1015-1220	T/F	MARSHALL
HRM 326	INTRO HOSPTY MGT	C01	05	0800-1005	W	TBA
HRM 328	INTERNSHIP	C01	05	TBA	TBA	MARZELLA
HRM 329	ADV INTERNSHIP	C01	05	TBA	TBA	MARZELLA
HRM 330	FUND MGT IN HSPTY IND	C01	05	0145-0350	T/F	RINGSTROM
HRM 332	ADVERTISING HOSP IND	C01	05	1015-0350	W	MARZELLA
HRM 340	PHYS PLANT MGT	C01	05	0145-0350	T/F	HAGENMEYER
HRM 403	ENV SAN FOOD SERV IND	C01	05	E620-0825	M/W	GREGG
HRM 404	HOSPTY IND FIN STATEM	C01	05	0800-1005	T/F	ILVENTO
HRM 416	SANIT FOOD SERV OPER	C01	05	E620-0825	F	BERGMAN
HRM 425	UNION MGT REL-HOSP	C01	05	0800-1005	T/F	DEAN
HRM 428	HUMAN REL HOSPTLY FLJ	C01	05	1015-1220	T/F	RINGSTROM
HRM 485	PRO PLAN IN HOSP IND	C01	05	0800-1005	M/R	WEBSTER
		C02	05	1015-1220	T/F	ILVENTO
HRM 500	INDEPENDENT STUDY	C01	1-5	TBA	TBA	A. MARSHALL
HRM 501	INDEPENDENT STUDY	C01	1-5	TBA	TBA	A. MARSHALL
HRM 502	INDEPENDENT STUDY	C01	1-5	TBA	TBA	A. MARSHALL
HRM 503	INDEPENDENT STUDY	C01	1-5	TBA	TBA	A. MARSHALL
HRM 504	INDEPENDENT STUDY	C01	1-5	TBA	TBA	A. MARSHALL

Tragedies are theme of book

wbs

Entertainment Editor

At a time of crisis in the Presidency, it is always of interest to look back to other such times and see what was happening then and how, if at all, things compare. In this light, David Halberstam's remarkable book, *THE BEST AND THE BRIGHTEST* (Random House, \$10.; paperback, Fawcett, \$2.25.) takes on even greater interest than it might normally arouse.

Much of the presidency of Richard Nixon was presaged by the eight Kennedy/Johnson years and one cannot help but see some comparisons. If it can be said that many of Richard Nixon's current problems are an outgrowth of his concept and control of his subordinates, so is *THE BEST AND THE BRIGHTEST* an account of the Kennedy subordinates (including Lyndon B. Johnson) and their effect on the presidency, on foreign policy, on politics and in particular, on the War in Vietnam.

RATHER OBVIOUSLY, the title refers to those remarkable men chosen by John F. Kennedy, after his election, to help him make a government. But the book expands upon its title to show how, in almost infinite ways, the men belied what was anticipated of them. Robert S. Macnamara, McGeorge Bundy, Dean Rusk, Maxwell Taylor, Averill Harriman, William Bundy, Walt W. Rostow and many others were among the brilliant, vastly talented, socially upper echelon men chosen by President Kennedy to supplement and complement his dynamic approach to the presidency.

That it turned into a generally competent, highly technocratic — if overly bureaucratic and vastly inexperienced

— "high command" is no surprise. That nearly this entire group ultimately fell into shambles — and how it did — is the surprisingly vivid and poignant story told herein.

THE GROUP WAS put together, of course, by JFK and, though it cannot be said that they worked terribly well together under him, it was largely after his death and Lyndon Johnson's ascension to the presidency that things began to fall apart. Although the cream of the Kennedy appointees were far from

leaderless without him — indeed, many were as content or more so with LBJ — they nonetheless lacked a fusion that JFK has at least seemed to provide. They found themselves in the position of working for a man who was forever uncertain of his position in the field of foreign affairs.

Lyndon Baines Johnson was a consummate politician and a brilliant achiever in the domestic arena, yet he often appeared out of his depth in world affairs. And the Kennedy men, while

capable enough in their technocratic/bureaucratic abilities mirrored his incapacity at dealing with the quicksand events which led inexorably to the Vietnam debacle. Thus the tragedy of Lyndon Johnson and the mirrored tragedies of Macnamara, the Bundys, et al is the central theme of *THE BEST AND THE BRIGHTEST*: it is a tragedy which cannot be overlooked, not only for its own sake, but in view of the very different, yet somehow similar crises so apparent today in Nixoniana.

Eden Roc offers good show, 'Zou'

wbs

Entertainment Editor

The new cabaret show ZOU in "Harry's" at the Eden Roc is a vibrant and rousing mixture of the arts of burlesque and female impersonation. Though when viewed — on its second night — the production retained a few rough edges, it succeeds on most of its levels.

One can quarrel with lip-sync shows in general and with the slightly tacky aspects of "drag," but not with anything that "works." The major thing about ZOU that sets it above most of the shows of its type is just that workability. And, although not every number is sure-fire — (there is a Marilyn Monroe bit that bombs badly) — the stunning moments far outnumber the "fluffs."

Far and away the best moment in the show is the brilliant rendition of an old Charles Aznavour number, "What

Makes a Man", in which a beautiful "femme" transforms "herself" into a very masculine guy. Indeed, according to the show's producer, Peter Jackson, "What is a Man?" is central to the entire concept of the show. For the production is basically a musical treatment of the theme of sexual ambiguity. Not the least of this point is illustrated by the fact that some of the best "drag" impersonations are done by men while a couple of the less successful are girls.

Other highlights of the show are a Bette Midler romp, a hilarious Andrews Sisters take-off, a slightly cliché — but well done — Mae West routine and a Liza Minnelli-Joel Grey-CABARET bit wherein Liza is done by a boy and Grey by a girl.

The show's finale is another highlight and, alone, worth the price of admission. In it, a mixed chorus of girls and guys, all in drag, do a stunning can-can in the best Follies Bergere style.

A quick word too, about the show's MC, Jean-Claude Baker, adopted son of the renowned "toast of Paris," Josephine Baker. His sharp performance and striking good looks more than make up — for those who care — for the fact that most of the men in the show spend much of it dressed as females.

The show will run indefinitely at Harry's at the Eden Roc nightly at 9 and 11 p.m.

Did you lose something?

Lost and Found for the entire University is now located in the game room, University House 241. All vending reimbursements will be handled in the game room as well.

Live
Music

Quad Sound

Quad Sound

My Place

Adult Nite Club

1/2 mile west of FIU campus

Entertainment Nitely DANCE til 5 AM

(Dress code: No Jeans or T Shirts)

Huge

Dance Floor

Open 7 days till 5 AM

Make My Place Your Place

Quad Sound

Quad Sound

Q
U
A
D
S
O
U
N
DQ
U
A
D
S
O
U
N
D

New players come to FIU

Eight former members of the Miami-Dade Community College South baseball squad will be receiving scholarship aid while continuing their studies and playing baseball for the Sunblazers.

The players are three catchers, two pitchers and three outfielders, one of whom also plays first base. With one exception, they are all from the South Florida area.

REMBERTO SANCHEZ will bring impressive credentials to Florida International after hitting for a .351 average with 24 runs batted in last season when he was the All-Tournament catcher in the State Tournament. "He has an outstanding ability to handle pitchers and his great desire and hustle will be tremendous assets behind the plate," said Coach Wonderling.

LUIS BRANDE is a righthanded pitcher who finished the season with the second lowest earned run average in the State at 0.84. Used primarily in relief, he pitched 43 1/3 innings for a 3-3 record while striking out 29. "We feel fortunate to have him, because he is one of the top pitchers in this area. His outstanding curve ball will give him a shot at a starting role with us," noted Coach Wonderling.

Another righthanded relief pitcher is **Bill Curry**, who appeared in 24 2/3 innings, fanning out 15 opponents and achieving a 1-0 record. His speed on the bases enabled him to steal four bases in four tries as a pinch runner.

THE OUTFIELDERS also will add a lot of speed to Coach Wonderling's team, as the three accounted for 30 stolen

bases in 31 attempts last season.

Terry Railing had 58 hits for a .328 average, tying for the team lead with 30 runs batted in and stealing 16 bases in 17 tries.

FRED COSPER, who can also play as a first baseman, stole six bases and hit .328, producing 16 runs in 32 games. "He's a very underrated player, a sleeper who if given the chance to play regularly will be one of the top hitters we'll have," said Coach Wonderling.

The third prospect is centerfielder **Eddie Rodriguez**, who has a .277 batting average in 45 games. He stole eight bases in eight attempts and whose sure glove and strong arm resulted in a .982 fielding average and four assists.

"These players will add great strength to our team. We are very happy to welcome them to Florida International and look forward to improving our 33-19 record next fall in our third year of intercollegiate competition," observed Coach Wonderling.

Classified Ads

KARATE classes are being held Tuesdays and Thursday evenings at Crown and Lion Health Club, 8000 Biscayne Blvd. Call Fred 751-0831.

SWEETWATER area 5 blocks from FIU \$100/month male or female.

ROOMMATE: Black male or female to share a two bedroom apt. @ Fountainbleau Park \$150/mo.

It's not the same without you **RICHARD**. Let me know how you are. Jennifer

FOR SALE: '68 T-bird 4 door Landau Best offer 271-2082.

THE GOOD TIMES needs: ad salespeople, writers, photographers cartoonists.

D. J. MISSED hearing you on the radio last night but enjoyed the sounds of silence. S.S.

BAR and 4 stools for sale, wrought iron. Call 221-1870.

A. B. MEET you around the corner later. Y.Z.

CLASSIFIED ads are FREE to all students, faculty and staff up to fifteen words.

R.M.N. WE await with anxious anticipation your expected removal. The people.

FIU signs pitcher Mark May

Sunblazers Baseball Coach Tom Wonderling has announced the signing of righthanded pitcher Mark May, a recent graduate of Broward Community College, who will continue his studies and

Leech to stay with FIU

Baseball player Thomas J. Leech will continue to study and to practice that sport at Florida International University after graduating from Shelby State Community College in Memphis, Tennessee, Coach Tom Wonderling announced.

"He will be a tremendous asset to our team because he can do it all and do it well: hit, run, catch and throw," noted Coach Wonderling.

The speedy outfielder swiped 23 bases in 24 attempts this season and 21 in 22 attempts the previous one. In his second year at Shelby, he played in 40 games to finish with a .364 batting average, third best on the team.

Leech also had a .703 slugging average and was the leader in runs batted in with 33, and he finished eighth in the country with 10 homeruns in 118 at bats. These accomplishments resulted in his being selected to the All-State, to the All Conference and to the All-Region (Eastern District of the National Junior College Athletic Association) teams.

The third-year student, a native of Memphis, expects to arrive in Miami on or about August 1 to continue his physical conditioning while getting used to the warmer weather.

"He is a great competitor who will give you all he's got," said Coach Wonderling, predicting that Leech would be instrumental in improving the 33-19 record achieved by the Sunblazers in their second year of intercollegiate competition.

baseball career at Florida International University next fall.

"I feel that he was the best pitcher that Broward had this year, and we're fortunate to have him because he was highly sought by a number of other schools," said Coach Wonderling.

May, who lives at 800 NW 72 Way, compiled a 6-4 record with a 2.00 earned run average as he pitched 84 1/3 innings and struck out 59 opponents in his senior year. His overall record at Broward was 13-5 plus three saves.

The 20-year-old, who was also the winning pitcher in this year's Junior College Tournament All-Star Game in Orlando, feels that his finest performance was a four-hit shutout against Miami-Dade Community College Downtown as he struck out 12 at Flamingo Park in Miami Beach.

Previously, the young hurler was a hardworking member of the pitching staff at McArthur High School in Hollywood, where he compiled an earned run average of 0.98 during the 163 innings when he struck out 219 opponents.

Born at the American military base in Guantanamo Bay, Cuba, while his father served there with the U.S. Navy, May expects to pursue a career in the field of architecture while keeping high hopes of eventually playing baseball at the professional level.

"I'm sure going to give it all I've got, since it might be a letdown if I didn't try, and playing at Florida International will help me a lot," the pitcher said recently.

Until the new school year starts on September 23, May will be working as a carpenter, as well as playing some baseball to keep in shape. "We are mighty glad to welcome him to Florida International and feel that he will be helpful in improving the 33-19 record compiled after our second year of intercollegiate competition," added Coach Wonderling.

Underwater sports offered

Florida International University is offering anyone interested in snorkeling or scuba diving the chance to practice these sports in an exotic Caribbean setting, earning college credit if so desired.

The Division of Health, Physical Education and Recreation is conducting an Underwater Education Workshop on St. John Island in the U.S. Virgin Islands. Dealing mainly with marine biology, the course is divided into three classifications of ability depending on the student's interest.

Group I is for those desiring to snorkel and examine the undersea world from the surface and in shallow diving areas. Group II centers on scuba certification which requires 30 or more hours of training in the use of self-

contained underwater breathing apparatus. Group III is for those who have certification and wish to dive daily in the beautiful reefs around St. John.

The course is being offered from August 9-22 and costs will be \$350 for Group I, \$400 for Group II and \$450 for Group III, and they include all transportation, meals, lodging and instruction. Students have the option of earning from one to five credits, subject to an additional cost of \$16. per credit.

The registration period lasts until Monday July 15 and those interested should contact Dr. Douglas D. Spencer at the Division of University Services and Continuing Education, Florida International University, Miami, Florida 33144 or by calling 223-2300 Ext. 2286.

FREE

to all FIU students

Five course dinner

Dance



Rock band

Stageshow

at the Carillon Hotel

August 9

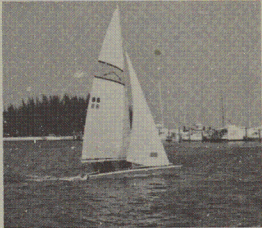
8 pm until 4 am

Tickets will be available at SGA office
University House 310

SUPER SAILORS

We offer a COMPLETE range of courses for sailors at all levels:

Grove Key Sailing School
Dinner Key
Miami



Our instructors are trained professionals teaching by a method developed in Sailing Schools the world over

All rates are based on just \$10 per hour
\$125 for each 14 hour course
Reductions for couples

CALL 448-8756 FOR MORE DETAILED INFORMATION

- * BEGINNERS
- * INTERMEDIATE
- * ADVANCED
- * RACING

Another look at George Corley

RICHARD D. WALKER
Guest Columnist

Not too many years ago in yet another exercise of popular democracy, the American people were offered a chance at a "new" Nixon. This retread, we were asked to believe, had matured. Gone was any trace of the "old" Nixon; the character assassin whose red-baiting and political ham-handedness had become an embarrassment to the nation and to the Republican Party had been tempered by *Six Crises* (one supposes a sequel of at least equal length will be forthcoming), and he had at last become a worthy representative of the nation which made him what he is. To our everlasting discredit, we bought him.

Now, in the Year of our Lord 1974, it appears that we are to witness the rehabilitation of George Corley Wallace, ex-racist demagogue. From the benediction of the last and most contemptible Kennedy brother, through the cosy and self-serving mewings of Mayor Evers, to the boldly unsigned article in last week's "Good Times," we can watch a truly fascinating example of political dissimulation folding around him. Lest this nonsense get out of hand, we should remember and reflect on some of the highlights of George Wallace's political career, remembering also what he once asked us to believe of him, and pondering the cost and operating expense of our last re-built political bargain.

"NAME WITHHELD" presents us Wallace the peace-keeper, the "hero" and the "moderate." We are told of Wallace the leader, determined enlightener of that strange and undifferentiated group of people which Mr. or Ms. Withheld contemptuously

refers to as "crackers" or "rednecks." He is given credit for allowing the integration of the University of Alabama, only taking for himself a bit of political cream which hurt no one, while he "made history go exactly his way." Ye gods.

Remember Birmingham in 1963? Bull Connor's police force was using dogs, clubs and cattle-prods on unarmed marchers who were asking for blacks to be allowed to sit down at lunch counters and to be hired in the stores in which they shopped. At one point there were over two thousand political prisoners in Birmingham's jails, many of them children twelve and thirteen years old. Martin Luther King and Ralph Abernathy had been sentenced to 180 days in jail and fined \$300 each for parading without a permit, and the nation was horrified at the spectacle. Wallace issued a public statement as Governor of Alabama:

"White people have not been involved — only lawless Negroes."

"... the President wants us to surrender this state to Martin Luther King and his bunch of pro-Communists..."

"I wish to commend Bull Connor and his forces upon their handling of the matter to date."

"I will not be a party ... to compromise on the issues of segregation."

As to the University of Alabama occurrence, what we saw was quite simple. The Governor of the state stood in a well-lighted and well-photographed door at the entrance to the university in order to prevent the enrollment therein

of citizens of that state simply because they were black. That those citizens were enrolled and that peace was kept seems more likely to have been a result of Kennedy's determination and the presence of hundreds of federalized National Guardsmen, than to anything to which Wallace can lay claim. He was fulfilling a campaign promise, and he either was sincere in the effort, and a racist, or he was insincere, and a liar. Take your pick.

SPEAKING BEFORE Congress on the 1963 Civil Rights Act, Wallace the moderates said this:

"He (the Negro) no longer wants mere equal treatment, he expects and apparently intends to bludgeon the majority of this country's citizens into giving him preferential treatment."

In the same speech, Wallace the peace-keeper said:

"If you intend to pass this bill, you should make preparations to withdraw all our troops from Berlin, Viet-Nam and the rest of the world because they will be needed to police America."

You are going to make the American people law violators because they are not going to comply with this legislation."

FORTUNATELY, and in spite of Wallace's inflammatory words, the American people did comply with the law, including Wallaceites after some persuasion. Once again, it seems difficult to credit George with the accomplishment.

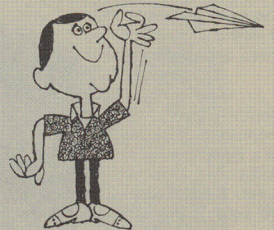
His 1963 view of blacks is neatly summed up in another extract from that speech:

"The nation's capital is supposed to be the supreme example of

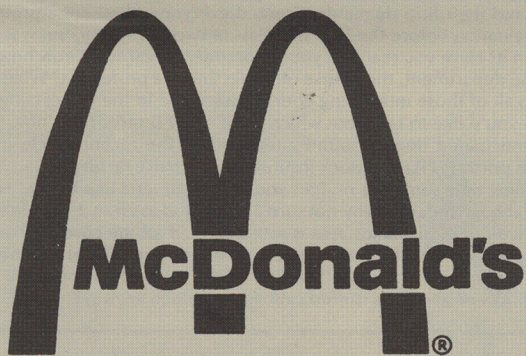
what civil rights legislation can accomplish. It's an example, all right, an example of a city practically deserted by white people ... Why don't you give home rule to the people of Washington. Let's see how the local people can run this city ... I suspect ... that this would result in damage to our image before the rest of the world."

I SHOULD BE very interested to see Withheld's figures on the elevated and integrated conditions of Alabama's blacks. No doubt we shall soon see blacks from all over the country flocking to Alabama to partake of the good life now said to be open to them.

Most of us were deeply shocked and saddened by the attempt on George Wallace's life. I felt sorrow for the man and for our country, no matter what my view of his ideology. Let us not, however, lose our heads and again forget what we know well. Wallace's record is clear and must stand as it was written.

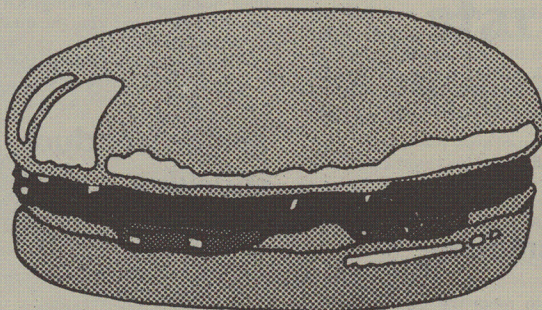


Letters to the Editor are welcome. It is requested that they are typewritten, double spaced. All letters must be signed. Names will be withheld upon request.



9850 S.W. 8 ST.
7281 S.W. 8 St.
1101 W 49th St - Hialeah

YOU DESERVE A BREAK TODAY



Just three minutes from campus at Coral Park Shopping Center.

Open at 8:30 a.m. serving breakfast & a complete menu

'Order' needed in student senate

If you had wandered by room 212 of University House Friday before last, you would have wondered what was going on. A couple people were banging on the table with ashtrays. Another pounded on it with his shoe. Several of the group assembled there kept up a steady chorus of "Point of order."

This was not a rhythm and blues jam session, as you might have suspected, however. This was a Student Government Association Senate meeting.

THE MEETING convened at 1:10 p.m. (after 40 minutes of waiting until a quorum was reached). Roll-call was taken and bedlam ensued.

Francisco Rivas, acting as chair of the meeting had the Herculean task of trying to maintain order — amid shouts and the SGA rhythm ensemble. Try he did, but succeed he did not.

"**POINT OF ORDER!**" was called too many times to remember. Senators routinely yelled their viewpoints back and forth. More than once a speaker was interrupted by someone — who

was, in turn, interrupted by someone else. Robert and his Rules of Order turned audibly over in their graves.

If the people in Media had wondered if their tape recorder could pick up what was being said, they needn't have.

"You all have me shaking, I am so upset," said Senator Patty Oliver, at one point of the melee, in a wavering voice. It was an easy occasion to get upset at, as you can well imagine.

Neither Chairman Francisco Rivas nor Consularie (parliamentarian) George Kenney exhibited much competence in seeing that order was maintained. Senators John Sands and Joe Kaplan made mockery out of parliamentary procedure, as did Obadiah Ferguson and Beverly Harding to a lesser degree.

IT WAS IMPOSSIBLE to tell from that meeting if anything of importance is carried out in senate meetings, since nothing of importance was gotten to. The budget was not covered. Nor the issue of who was even a part of the senate really discussed. To be sure,

various senate members relieved themselves on the question, but not once did the chair recognize the issue as one suitable for discussion while the "thunder-storm" raged. Of course, neither would those calling "Point of order" allow the agenda to be followed.

When Dean Clark said, "You've got your own Watergate going here," she struck close to home. We'd venture to say the meeting would make an even better show than the Watergate Hearings, though hardly more encouraging.

IN ANY CASE, the principle's the same. The President and Congress oversee and direct tax money according to political considerations and their own whims. The Student Senate does the same with the student activities fees tacked onto tuition without option.

Is it possible that you, the students, direct this money as you see fit — or keep it if you want to, rather than hand it over to "the little Watergaters"? Is it wise to fertilize the politician's breeding ground?

Cabbage or College

A faculty member (overheard) summarized what he felt to be the major concerns of the FIU student body.

The first topic of discussion among the majority of FIU students this summer is the quality of food offered in the new cafeteria in University House. The second major topic of concern is the creation and organization of student activity clubs — each promoting a specific sport, political view, or culture. Third priority goes to comments on the weather, the surf, the beaches and the usual social happenings. Unfortunately, he felt few students appear to be concerned with the academic standards and curriculum development at FIU.

Assuredly, every university needs ample food services to keep its students healthy and satisfied. Certainly every university, new or old, needs student organizations where lasting friendships can be made and sportmanship and international culture can be maintained and preserved. And of course in Florida the surf and sand will pop up in even an occasional intellectual discussion. But most of all, at any new and rapidly expanding institution the students' momentum must be directed, at least partially, into the area of their curriculum. The students themselves should be actively criticizing mediocre courses offered and initiating and praising the courses which stimulate their interest and education.

Yes, FIU, here and now could be that "big pedagogical pie in the sky". FIU could be a university that students helped to build, not only through contributing their tuition, but also through their own ideas, their creative suggestions and their firm demands. Granted everyone filled out a professor or course evaluation before the final in a class or two last spring, but was your heart really in it? Have you really let your department chairman know how you feel about the department, the course offerings and the professors? What ever happened to all of those interesting courses described in the FIU catalog that you thought you'd like to take, but which were never offered? Just how good does your anticipated degree sound after reading the recent article in the Herald which portrays FIU as a mock institution with naive faculty?

So the next time someone nudges you in the cafeteria line to ask "How's the stuffed cabbage today?", why not turn around and ask him if he thinks the present curriculum in his major area is satisfactory, if all the core courses are absolutely necessary, and if the courses are all offered in sufficient number at the appropriate times in the year? Sure, he'll look at you like you were nuts, but then just how important is stuffed cabbage for lunch anyway?

Further, a mood is growing on campus which warrants the attention of the administration. Conflicts between smokers and non-smokers have been noted on campus, and the number of incidents seems to be growing. Smokers are aware that smoke is hazardous to their health, and are asking that their health be protected from the unwanted outside hazard of smoke.

A student who has been in class

D.L.

Senate conduct shocking

I am shocked to find that these students, John Sands, Beverly Harding and

Obadiah Ferguson are so ignorant in matters of respect for others and Robert's Rules of Order. Their repeated outbursts during last Friday's SGA meeting continued to show me their lack of concern for the Student Body.

As a former Senator of the School of Education and co-author of the Constitution, I have accepted the interpretation that when a member graduates he or she is no longer a student for a brief period of time regardless of the person's status for the following quarter. It is time for Beverly and Obadiah to realize this. The SGA will also have to decide whether they are going to spend their time catering to the interests of these few or to the interests of the rest of the Student Body.

Carol Yngve

MARY-JEANETTE TAYLOR
Editor

GEORGE KENNEY
Business Manager

The Good Times is published from Florida International University, University House 212A, Tamiami Trail, Miami, Fla. 33144. It is an independent, student oriented publication produced weekly for the FIU community.



Senator John Sands pauses between his shouts of "Point of Order!"

response

Editor resigns

SGA post

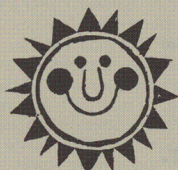
To: Mary-Jeanette Taylor

In accepting your resignation from the Student Government Association I sympathize with your decision, due to the fact that playing two roles such as member of SGA and Editor of the Good Times would result in conflicts. This resignation would be in the best interest of the whole student body.

Hoping that your decision will allow more room for criticism concerning SGA and related matters, and in this way SGA would be urged to show more responsibility in its duties.

Francisco Rivas
Chairman, SGA

Ed. note: I resigned because I felt the credibility of the newspaper might have been disparaged by my involvement with SGA. I wished to insure that no one could accuse The Good Times of "conflict of interests."



'Lefties' left out

FIU seems to cater to minority groups in quite a few ways. We see special

courses being offered for certain cultural groups. For the handicapped there are special pay phones, special ramps, and special toilets in the rest rooms. It seems to me that with all the money being spent for special interest groups, that there could be some allocated to provide left-handed desks for those who were born left-handed, a group that seems to have been completely forgotten. We are not asking for left-handed pay phones, flush levers on the left side of the johns, only a desk upon which it would be more easy to take notes, without one getting one's whole arm tired, because of the relatively backward design of the desk. The only things on campus that are more convenient for lefties are the water fountains, though probably not planned that way. This is a type of discrimination that cuts across all lines of race, religion, color, creed, or national origin, and I do not believe that it would cost too much to remedy the awkward situation.

G.Langsdale

Still smoking

This is to rebut the Career Service employee who has never attended class and is making statements about which they know nothing. As a student on this campus for the past two years it has become obvious through observation that the ratio of non-smokers to smokers is in the area of 80% to 20% and in some cases 90% to 10%. Therefore the non-smokers are in a great majority and not a minority as the Career Service worker would have us believe.