

11-15-1973

The Good Times, Vol. 1, No. 9, November 15, 1973

Florida International University

Follow this and additional works at: https://digitalcommons.fiu.edu/student_newspaper

Recommended Citation

Florida International University, "The Good Times, Vol. 1, No. 9, November 15, 1973" (1973). *PantherNOW - Student Newspaper*. 942.

https://digitalcommons.fiu.edu/student_newspaper/942

This work is brought to you for free and open access by the Special Collections and University Archives at FIU Digital Commons. It has been accepted for inclusion in PantherNOW - Student Newspaper by an authorized administrator of FIU Digital Commons. For more information, please contact dcc@fiu.edu.

THANKSGIVING BLESSINGS TO ALL!



Among the days that pass next week is the day on which, by national decree, we officially count our blessings — Thanksgiving.

The first Thanksgiving was celebrated in 1621, but it was not until 1789 that President Washington proclaimed a national celebration, although it was not very successful until President Lincoln revived the custom just 100 years ago. In 1941, the Congress set the fourth Thursday, which this year is November 22, as the official Thanksgiving Day.

A harvest that included four wild turkeys seemed cause enough for the first celebration. In today's complexity it is sometimes difficult to count our blessings. The man who does not freeze to death because oil production restrictions are eased may well suffocate from lack of clear air. His brother may starve because he lost his job to conserve the energy that kept the man from freezing.

Our nation has reeled from one crisis to another in the past year. But this nation of ours will see a new force of togetherness begin to develop; not with the pull of a whirlpool or tornado, more like a swirl of oak leaves or the circling of a school of fish. These phenomena are a natural joining together, pulled by a common cause. True, some leaves and some fish will not join the circle; the pull of the common cause has not reached them. We live in a manmade world. We do not react purely by instinct or the pull of nature's elements. We are structured into a "logical" scheme — a scheme laid out to protect the rights of the individual. The individual in turn has voluntarily given up rights when it seemed expedient in order to protect the rights of the society.

Those of us who have never lived under any other premise do not know how valuable these rights really are. How important it is as we approach this particular Thanksgiving in 1973 that we direct our thanks to what appears to be a spontaneous feeling of this nation that the system can work, is working and must work.

Let us dedicate ourselves to do our part, as we see it, to work with, not against; to join hands, not wrench apart; to be part of a "co-op", not a "cop-out."

We have this opportunity at Florida International. We have no hampering past, an abundant present and an un-

limited future. Let us seize the moment thrust upon us and give thanks that we can play our part — and I wish each member of the University Family bountiful blessings for this Thanksgiving.

Dr. Charles E. Perry
President

reader response

It's cookie time at FIU...

A column in "The New York Times" a number of years ago pointed out how unfortunate it would be if Universities gave themselves nicknames based on the names of their first presidents.

They pointed out how awful it would sound if the headlines read "Abies crush Belchers" Yale (first president Abraham Pierson) Princeton (first president John Belcher).

Since the precedent seem to be to nickname the school for the founder, what a great opportunity FIU has missed.

On the campus, is an eternal light dedicated to "the memory of the late State Senator Ernest R. Graham, 1855-1964 . . ." who with great foresight and wisdom introduced the first legislation in the Florida legislature to establish a State University in the Miami area.

With a founder named Graham, how could FIU miss? The Graham crackers would be invincible. Sunblazers, indeed!

Respectfully,
Donald Z. Bailey

(Ed. Note: Wait a minute. I thought we were talking about 'first president,' not founders. Shouldn't the name be Perry's Pets or something similar.

Realistically, for those who didn't know it, the campus had the opportunity to suggest and recommend, as well as vote on possible names.)

Perry responds

I will respond to your open letter to me (published in the November 8 issue of "The Good Times"). I do not have the opportunity to give it the proper consideration before the deadline for the Nov. 15 issue but I will give you an answer for the Nov. 29 issue.

Dr. Charles E. Perry
President,
Florida International University

Wright on!

May I express my thanks as one student at FIU regarding your editorial of SGA activities. I would hope that the response from Dr. Perry will be of a positive nature. Thank you again, keep up the good work.

V. Gray
FIU student
Health and Social Service

Editor..... Myron Struck
Business..... Joseph C. Behm
Advertising..... Mark Turim
Circulation and classifieds..... Arnold Berkowitz
News..... Donna Kurtz
Sports..... David Scott

Florida International University
Tamiami Trail
223-2300, Extension 2842-2843
PC 532

The Good Times is an independent, student oriented publication produced for the Florida International University Community.

SOMERSET...

it's a city, a county, and a way of life

(see page 4)

DAY CARE...

is it needed, and who needs it

(see page 1)

Photos By
MYRON STRUCK



The Good Times

Florida International University

Thursday, Nov. 15, 1973 — Volume 1 No. 9

Day care becomes campus concern

By MYRON STRUCK
Editor
and
MAURA KAUFMAN
Staff Writer

o First of a three part series

"Insurance companies just go hummmmmmm . . . and nod their heads in disapproval," Sandra J. Clark, dean of students said.

"It is somewhat expensive," Terry Spence, assistant dean of student services said.

"It just isn't a popular idea with men," Dr. Charlotte Tatro, director of the Institute for Women said.

The subject that causes this negative reaction is not automobile insurance or sunbathing in the nude — it's daycare.

And the problems involved in gaining day care centers are spelled out — insurance, money and popularity.

These three "capitalistic" factors, in fact, apparently override the issue of whether the center has educational advantages or simply custodial care.

These, and other factors, however, are all playing a key role in the minds of the various organizations at Florida International University interested in establishing a day care center on or near the campus.

Barbara O'Nan, who is chairman of the day care center group on campus, "gets two or three calls a day asking about day care." The calls are directed to her desk in the Student Government Association Executive Offices where she is the Scribe.

"I have to tell them nothing is happening, actually, but there are plans being laid," Ms. O'Nan said.

The Day Care organization was formed around the time Florida International opened its doors more than a year ago and the Student Services division was investigating



"I have to tell them nothing is happening, actually, but there are plans being laid,"

Barbara O'Nan

"It is the general policy of the University, however, that the FIU Education Department is not concerned with day care, except perhaps as a lab; and that left us with the burden of proving need."

Terry Spence



"We were disappointed in the fact that many of the persons responding said that they didn't feel it was the institutions role to do this project,"

Sandra J. Clark

the same subject.

"We conducted a one-year drive to poll the interest in day care," Terry Spence said. "It is the general policy of the University, however, that the FIU Education Department is not concerned with day care, except perhaps as a lab; and that left us with the burden of proving need."

FIU mailed out surveys to all new students last year, and the students attending, faculty and staff were asked for input as well.

"The response was low," Dean Clark said. "You didn't have to identify yourself, if you didn't want to."

The survey showed, she said, that many people, at that time, hadn't fully realized that there was such a lack of adequate day care facilities in the area in which they planned to attend classes.

"We were disappointed in the fact that many of the persons responding said that they didn't feel it was the institutions role to do this project," Dean Clark said.

"The faculty interest, in fact, proved to be much higher, than the students at the time."

The Dean added that "I am not interested in the faculty, although they were consulted to see their need and what their input was."

The issue was, in a sense, tabled until recently when it became known that Metro was planning five regional day care centers. One, they hoped would be located in the general vicinity.

A new force came into being, Francina Thomas. Heading the department of Minority Affairs and Women's Concerns, Ms. Thomas was charged with the task or coordinating the day care feasibility studies.

"They all seem to get stalemated in the same place," Ms. Thomas said, criticizing the fact that people seem to find some detail in the survey that makes the polling irrelevant.

Her office does not have any funding to put into the establishment of day care facilities, nor does Student Services.

Currently, at FIU, the only benefit the working parents can get is by reflecting day care as a need on their Financial Aid Forms. Through inking in need here, the chances of their getting more aid is increased. This system does not exist statewide — only here and at the University of South Florida.

Ms. Thomas reflected the problems she has encountered.

"We've been told that we can't get it (day care) on campus because of the insurance," Ms. Thomas begins, adding that without support and funding, the center will be an improbability.

The organization is working with the Commission on the Status of Women in convincing the proper authorities that day care is needed in the immediate Florida International University area. Needed, in fact, Ms. Thomas says, at Tamiami Park at Coral Way and 117th Street.

"You can't just up and put a day care facility anywhere . . . you have to have a certain number of chairs at a certain height, a certain number of bath rooms and a certain number of a whole list of things," Dean Clark said.

"Ms. O'Nan said that efforts have been made to "informally" secure a classroom to use as a day care facility, and these have failed due to regulations.

"The main problem in putting it on campus," Dean Clark said. Is the fact that the insurance rates just fly up."

Dean Clark cited other locations in the country that have medical and educational facilities in

conjunction with a campus day care facility, thus alleviating some of the soaring insurance rates.

Here, though, without any support benefits, "except a budding nursing program," Dean Clark says, it would be "economically unfeasible."

"If the University is involved," she said. "It must be done right."

Should the alternate plan, to house the day care center at Tamiami Park go through, Ms. Thomas feels that up to 300 children could eventually be accommodated.

Support facilities and administrative personnel to man the center would be the main cost factors involved.



Photos by JOE RIMKUS JR and STEVE RESNIK

Ms. Thomas' recent poll, however, showed one marked difference from earlier surveys — men have expressed a large desire to have a day care center.

In an unrelated survey, 46 coupons were turned in to Ms. Thomas' office from an advertisement soliciting readers needs for day care. The ad ran in the Sept. 27th edition of "The Good Times."

Day care, though, as far as Tamiami Park is concerned, is only a lobbying and convincing effort. The failure on the part of the student body, the faculty and staff of Florida International University to show support for such a project could cause it to fold.

With two surveys completed and two more underway, a complete turn-around in day care apathy may be needed to secure the center.

"Day care is an important concept," Terry Spence said. They require an amount of financial support with day care, and we are trying to offer it to them."

"But just what level of priority does day care have in our budget," Dean Clark said. "It could be the first thing cut, or the last. But pruning the budget usually cuts this out as being unnecessary. It usually turns out that another agency can provide it better, and the whole project fails."

(Continued on page 7)



Kids roam halls of PC

Would you use a day care center near Florida International? _____

How many children would you enroll? _____

Number of children under 2 years old? _____

Number of children under 6 years old? _____

Student? _____ Faculty? _____ Staff? _____ Other? _____

Would you, in some way, support through active participation, the implementation of a day care center in the region, if possible? _____

How much would you be willing to spend to put your child(ren) in a day care center? _____

Name _____

Address _____

Phone _____

Regardless of whether or not you have filled out a form for day care in student services or through the office of Minority Affairs and Women's Concern, "The Good Times" asks that all interested persons complete and hand in this form to PC 532 — The Good Times Newsroom. All results will be kept confidential and forwarded to the Ad Hoc Committee on Day Care.

BARCLAY'S • DADELAND



LET TEXAS INSTRUMENT'S SR-II TAKE SOME STRAW OUT OF STRUCTURAL ANALYSIS AND ADVERSITY FROM INVERSE TRIGONOMETRY SAVE TIME AND PAPER EXPENDING EXPONENTIALS AND AVOIDING LOG JAMS.

THE SR-II FEATURES π TO SEVEN PLACES 'CONSTANT' FUNCTION, AUTOMATIC EXPONENTIAL, TRANSPPOSITION, AND SIGN (+/-) CHANGE.

ONLY \$119.95

IF HIGHER MATH GETS YOU DOWN, COME TO BARCLAY'S IN THE DADELAND MALL. WE HAVE THE CALCULATOR TO SUIT YOUR NEEDS.



TEXAS INSTRUMENTS

667-1624 • WEST MALL • TELEPHONE 667-1625



Help us help you

THE SUNSHINE LAW

In recent editions of the Good Times newspaper, various allegations have been made against your Student Government Association. We would like to take this opportunity to assure you as students that we the elected Student Government Association have not and will not ever breach the trust you have placed in us.

The Florida Statute No.286.011 Public meetings and records; commonly referred to as the Sunshine Law in brief states "(1) All meetings of any board or commission of any state agency or authority or of any agency or authority of any county, municipal corporation or any political subdivision, except as otherwise provided in the constitution, at which official acts are to be taken are declared to be public meetings open to the public at all times, and no resolution, rule, regulation or formal action shall be considered binding except as taken or made at such meeting."

Official SGA meetings have never been in violation of the Sunshine Law. As to the goals of the University and those of Dr. Perry, we stand firmly committed to these goals and it has never our intention to violate these goals. Our meetings are open, our business is for the students.

THE STUDENT GOVERNMENT ASSOCIATION

SEMPERIT GETS IT ALL TOGETHER AND GUARANTEE 40,000 MILES OF WEAR

215/70 sr 14		225/70 sr 14		225/70 sr 15	
Camaro	Charger	Skylark	Ferrari CTB	Impala	Trans AM
Torino	Cutlass	Montego	Gran Torino	Monaco	Ferrari GTB
Cougar	Firebird	Olds F 85	Cutlass 350	Galaxie	Monte Carlo
Mustang	Chevelle	Grand Prix	Pontiac GTO	Riviera	Rolls Royce
Le Mans	Satelite	Ambassador	Plymouth GTX	Ford LTD	Plymouth Fury
Javelin	Barracuda	Olds 4-4-2	Maserati Indy	Biscayne	Maserati Chibli

240-Z

LIST PRICE \$67.88

LIST PRICE 72.27

LIST PRICE \$76.65

SPECIAL WAREHOUSE SALE ALL ONE PRICE

MOUNTED PRICE **\$39⁹⁵** + F.E.T. \$2.62 - \$2.93

•WIDE •STEEL •RADIAL •TUBELESS •WHITEWALLS

VEITH PIRELLI

V.W. OWNERS 560-15 PREMIUM

List Price \$23.76 \$1.55 F.E.T.

\$15⁹⁵ + F.E.T. \$1.55

WE BALANCE M A G WHEELS
Hoffman Computer Balancing



RADIAL TIRE CENTER

4220 PONCE DE LEON, CORAL GABLES • PHONE 445-3688

Bulletin Board

Nov. 15

The Biology Club will meet today, at 1 p.m., in PC 530. The meeting will be chaired by the club's newly elected officers: Chairman Carlos E. Espinosa, Comptroller, Harry Clifford; Secretary, Sue L. Buslinger and Reference Officer John L. Lewis.

The Criminal Justice Society will meet today, in PC 530, at 7 p.m.

The Dade Forum, a non-partisan organization, will have a luncheon and program today, at the Elk's Lodge 948, 495 Brickell Ave. Art Barker will speak on the reasons The Seed left Dade County. The Metro Mayor, Commission members and members of the Dade County Health Planning Council were also invited to speak. The public is invited. Call Russ Walters, 665-7349, for further information.

Nov. 17

The First Annual Fountainebleau Park Art and Crafts Show will be conducted on Saturday at the reception center of the condominium complex, at West Flagler Street and N.W. 88th Avenue.

The grounds will be open to artists at 9 a.m. with space selection on the first come and first serve basis.

The show will open to the public at 10 a.m. and last until 6 p.m. There is no fee.

Cash prizes will be awarded on the following basis: \$100. (best in show for original painting) \$50 (2nd prize for original painting) and \$25 (special prize for best in crafts).

Information may be obtained from Mary Ellen Davis at 223-5243.

Nov. 19

It's here, the event FIU has been waiting for, The First Annual Turkey Trot sponsored by the Recreational Sports Program of the Athletic Department. All aspiring marathon joggers are asked to meet in at the bus stop overhang east of Primera Casa, at 1 p.m., Nov. 19.

Men and women will be running together in four heats divided according to age group. First prize is a turkey, so gring your I.D.'s, or driver's licenses and run for your supper.

Professor Joseph Olander, assistant dean of arts and science, is planning a trip to China during the summer of 1974. All students interested please come to the meetings on Nov. 19, at 3 p.m., in DM 441, or Nov. 20, at 7 p.m., in DM 441.

Nov. 20

Participating in the School of Technology's lecture series on Urban Systems, is John Wagner of the Division of State Planning, Tallahassee. Wagner will speak about Florida's Population Growth on Nov. 20, at 4 p.m., in PC 330.

Nov. 26

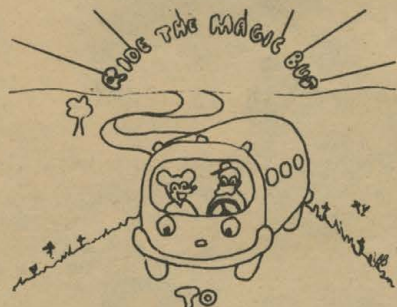
Ira Sullivan, a noted jazz musician, will perform in DM 150 on Nov. 26 at 10:30 a.m.

Nov. 28

The Criminal Justice Society is having a career information seminar for students in the criminal justice department Nov. 28, at 7 p.m. in PC 530. Representatives from Federal, state and local agencies will provide information about their organizations.

The statewide organizational meeting of Florida Universities and Senior Colleges Media Associations has been re-scheduled for Jan. 12, 1974.

"The Good Times," will still host the meeting at the FIU Campus.



DISNEY WORLD

**ONE DAY TRIP
TO WALT DISNEY WORLD
SATURDAY, DEC. 1**

PRICE:

Adults \$21.00 - Children (up to 16) \$18.50

Includes Round-Trip, Bus Transportation from F.I.U. Parking Lot, Tickets for Admission and Eight Attractions.

BRITISH STUDENT TRAVEL CENTER

5940 S.W. 73rd Street, Suite 202

Phones: 667-1980 / 223-7918 / 226-9742



CARE begins attack on world hunger

ATLANTA — Some 7,000,000 children across the world have had to be dropped from CARE's child-nutrition programs, because of reductions in U.S. Food for Peace commodities allocated

Grandfather and child await CARE packages in poverty-stricken Africa

to private American agencies for humanitarian use overseas.

To continue daily supplementary feedings for 20,000,000 persons — almost all children — during the coming year, and to provide emergency food aid for 6,000,000 refugees and disaster victims, the 1973 holiday-season CARE Food Crusade seeks to raise \$7,300,000, Frank L. Goffio, executive director, announced.

"Painful decisions have had to be made to drop large groups of preschool- and school-children in countries where hunger and malnutrition are the biggest killers of the young, and cause permanent physical and mental damage in millions who survive," Goffio said.

"CARE is hopeful Food for Peace cuts may be restored in the months ahead. Meanwhile, we must appeal to the public to respond generously, so that our most crucial programs can be maintained."

While U.S. agricultural donations are the mainstay of the programs, CARE also buys other foods to match local needs. Host governments help too, by contributing distribution costs according to their abilities. Public contributions cover the remaining delivery and purchase costs. Checks may be sent to: CARE Food Crusade, 2581 Piedmont Road, N.E., Suite 23-A, Atlanta, Georgia 30324.

Linked with CARE self-help and health programs, the Food Crusade helps build future self-sufficiency for the people in 34 nations of Africa, Asia, Latin America and the Middle East.

Child-feedings, ranging from high-protein "snacks" to a full meal, are conducted at preschool and nutrition centers, primary schools and other institutions — often, in facilities CARE helped build and hospitals where CARE-MEDICO teams are working. Emergency recipients will include war refugees in Cambodia and survivors of a series of catastrophic droughts and floods which have hit a score of countries.

"No agency wants any food withheld from domestic markets or social programs," Goffio stressed. "We are asking our country to hold back a small amount of what it can sell abroad, so that vital programs can be continued in the name of the American people, as benefits our humanitarian traditions."

Scheduled CARE food programs will operate in Cambodia, Ceylon, Chile, Colombia, Costa Rica, Dominican Republic, Ecuador, Guatemala, Haiti, Honduras, Hong Kong, India, Indonesia, Israel, Jordan, Liberia, Macao, Niger, Pakistan, Panama, the Philippines, Sierra Leone, Tunisia, Turkey and South Vietnam.

The lurking monster of Primera Casa

By PHIL ALLEN
Staff Writer

This is a warning. Within the modern cavern known as Primera Casa, there lurks a hidden trap. Few who fall into this snarled web of doom ever manage to break free from its death grip.

Its tenacious tentacles reach throughout the sullen nooks and crannies of the fifth floor and lay in wait.

Its awful vigil is perpetual and many an unsuspecting victim falls prey to its omnious persistence.

Beware of the sound of bells, the whirring, clicking, mechanical madness and the haunting hysterical laughter of those who live hopelessly under its horrible spell.

If you hear these things, turn back, lest you, too, become trapped.

You become a has been, formerly full of vigor, now suddenly, a broken shell of what you once were. Just another helpless faceless member of a damned breed, damned for all time by . . . (tasp) the pinball machine.

Your grades are gone, your car, your friends and family. Gone are the happy dreams of success. Where once you took the stairs two at a time, you now stumble randomly, like a zombie in search of darkness. You hide behind corners near vending machines, hoping to pick up a forgotten nickle or dime.

You begin to sell back all your texts, sometimes before you've even finished with them. You've taken to scavenging vacant lots for deposit bottles, looking in telephone coin returns, even selling carnations on street corners . . . anything to feed your insatiable pinball habit.

The magnetic force of these electronic devils is consuming and smoldering the flames of life.

You're obsessed, addicted and possessed by hollow promises of free games. You play in a trance, every muscle tense and every nerve on edge.

You find, however, that you are not alone.

Daily your pitiful comrades make their way to the student lounge and into the pin ball addiction chamber. Your rent money or grocery money in hand.

Daily, you walk away, with nothing — not a single thing to show for your efforts.

You're dazed and defeated.

Hour after hour the death like procession continues.

The poor devils. Cursed be the man who invented these machines . . . black the day the first dime went down the monsters mouth.

Somewhere, somehow, in a dimly lit bar, another innocent humanoid is selling his soul to the flipped out menace.

The thought in itself is unbearable.

So many stories to be told . . . so many songs to be sung . . . but why the pinball game . . . you gaggle along . . . why this accursed pinball game?

The pinball addict is nervous and frigidity. Often you will see him pushing buttons at random, as if operating a machine. When he does this on your shirt, you begin to worry.

He will sit at a desk with his hands on either edge and push and pull . . . as if acting upon the flipper buttons. He is just nursing the little steel ball out of trouble.

In the latter stages of his addiction, the junkie will be obsessed with walking with his eye to the ground looking for an even more remote stray coin.

Pinball mania has taken over. It's bigger than Elvis and it's bigger than the Beatles.

Behind these colored lights and tote boards lurks a killer. Of minds that is.

And before it's too late, hope it doesn't get you . . .

ABORTION?



Reliable information counseling, and FREE pregnancy tests are available every day.

446-6133

FACT-A service of the Florida Family Advisory Council.

NON-PROFIT

for people who walk on this earth...

If you've walked barefoot on sand or soil you know how great it is. Your heels sink low and your feet embrace the earth. Then you put on your shoes, return to the city, and become another concrete fighter... but the concrete always wins. You

yearn for the earth that lies buried beneath the city.

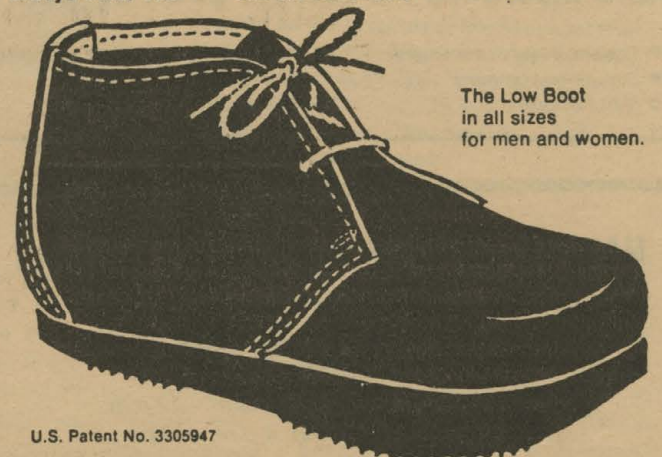
The Earth Shoe is the first shoe in history with the heel lower than the sole... this helps return you to nature though you are forced to live in a cement-coated world. The Earth Shoe's patented design gently guides you to a more erect and graceful walk, and reduces fatigue and the aches and

pains caused by our hard-surfaced city.

For men and women in shoes, sandals, sabots and boots. From \$23.50 to \$48. Brochure available.

Earth Shoe

Open Mon. thru Sat. 9 to 6
Friday Night till 8 P.M.
5724 Sunset Drive in the
Crossroads Bldg. at Red Road &
Sunset Dr. Telephone (305)
667-9322



The Low Boot in all sizes for men and women.

U.S. Patent No. 3305947

Our advertisers need you

THE STUDENT GOVERNMENT ASSOCIATION

COLLEGE OR ARTS & SCIENCES

Mark Turim
Rick Ferrer
* Spanki Vega
* Bob del Toro
* John Sands

PRESIDING BOARD

Alex Casals, Chairman
Clinton Clarke,
Associate Chairman
Barbara O'Nan, Scribe
George Kenney, Consularie

SCHOOL OF EDUCATION

Carol Yngve
* Joe Kaplan
* Pat Palmer
* Frances Sanes
* Melvin Billingslea

SCHOOL OF TECHNOLOGY

* Raphael De Arazoza
* Vivian Oquendo Soler
* Harold Meadows
* Jose Mendoza

SCHOOL OF BUSINESS

* Diane Meltzer
* Fortunato Arroyo
* Patrick Mason
* Bill Klugar
* Lenny Reina

SCHOOL OF HEALTH & SOCIAL SERVICES

Sylvia Sickels
* David Danziger
* Sarah Lenett
* Carol Greisel
* Franklin Schupp

SCHOOL OF HOTEL, FOOD & TRAVEL

* Ev Barnes
* Jerry Minton
* Joseph C. Behm
* Mark Pape
* Joseph Von Kornfeld

*Newly elected

You may contact the above representatives at ext. 2681 or leave a message in room 534 or 536.

News from Student Services

Organizations should register

All student organizations which have not submitted guidelines or a constitution to the Student Activities Office in PC 220 should do so as soon as possible.

Formal recognition by the Division of Student Government Association is given to a student organization after it has filed an application for recognition and guidelines or a constitution in PC 220.

The Student Activities Office urges all student organizations who have not done so, take these steps to complete the process for recognition by the end of this quarter so that they will not be considered inactive.

Any questions regarding student organization should be referred to Lillian L. Kopenhaver, Coordinator of Student Activities, or Geri Spurling, PC 220.

Short-term loans available

The university has short-term loans available to students for a maximum of 90 days. These loans carry a nominal service charge.

Applications for short-term loans for winter quarter will not be available until the first week in December (1973).

Please remember that the forms you are given are merely an application for a short-term loan. You must return to the Financial Aid Office to sign the promissory note and have it notarized if the loan is granted.

This is a revolving fund. Students are urged to repay the loan by the due date so that other students will not be deprived of emergency aid in subsequent quarters.

New loans announced

The John Miskoff Student Assistance Fund has loans available through the Financial Aid Office to students selected to receive aid, one each from the junior class, senior class and graduate school.

The terms of repayment of funds are as follows: (1) full payment will be within five years from the date the student is no longer enrolled at FIU; (2) no interest will be charged on the funds disbursed to each recipient during the first year of five allowed for repayment. Interest at the rate of five per cent per annum shall be charged to the recipient for the second, third, fourth and fifth years; (3) if the account should become delinquent, interest at the rate of seven per cent per annum shall be charged on the unpaid balance due as of the due date.

Application forms are available in PC 220.

SPIRITUAL RETREATS OF THE SPIRITUALITY OF THE FATHERS OF THE DESERT.
ALSO GROUP ENCOUNTER WEEK-ENDS.
FOR INFORMATION CALL CATHOLIC CHAPLAIN AT CAMPUS MINISTRY OFFICE, EXT. 2215 OR 223-5982 AFTER 6 P.M.

RESEARCH MATERIAL ALL TOPICS

Academic Research Library of Florida

Largest Library of Research Papers in the United States and Canada

Located at: 5790 Bird Road / A & R Rand Tax Office
Miami, Florida 33155

Tues., Wed., Thurs., 10-5 / Fri., Sat., 11-3

We also provide original research on any subject

Phone - 665-6338

Eastern Underwriters, Inc.

Phone
264-5062

7360 BIRD RD.
MIAMI, FLORIDA 33155

Bill Burgess
Agent

10/20/5 — BI/PD/PIP/UM

Auto Insurance As-Low-As \$34 Per Quarter

- 23-old single males eligible
- Top rated company
- Call for quote
- Most violations NOT chargeable
- SR-22 filing
- All forms of Insurance

MARTY'S RESTAURANT AND PIZZA TAKE-OUT

7337 West Flagler Street

Phone: 261-2591

New Hours: Tues - Sat 11 a.m. - 12 p.m.

Sun - Mon 4 p.m. - 12 p.m.

OPEN FOR LUNCH

Delivery Service Available



LARGEST SELECTION
BEAN BAGS IN
SOUTH DADE
WATER BEDS
WATER BEDS FRAMES

BEAN BAG QUEEN

HOURS
12 Noon to 8 P.M.
7 DAYS

3015 S.W. 107th AVE.,
Between Tamiami Trail
& Bird Road

**10% OFF
WITH THIS AD**

BUD'S SHELL

ACCESSORIES
WHERE TO BUY THEM,
AT BUD'S

HELP
WANTED

107th Ave & the Trail

CHUCK'S GENERAL STORE

634 S.W. 109th AVENUE

223-9107

Open 7 days 7 a.m. to 1 a.m.

USED TV's

ICE — BEER — WINE — GROCERIES

Money Orders / Notary Public



ABORTIONS

... are legally available in Florida for your own health. You should be referred to a facility which is specifically designed for this procedure. For your health and well being, please call ...

(305) 667-1049

**Women's Referral
Group**

A non-profit organization dedicated to help you.

This is Somerset

Story and Photos
By MYRON STRUCK
Editor

SOMERSET, Pa. — A Thanksgiving or Christmas vacation to a northern state might be exactly what you need — and the place to go is Somerset County, Pennsylvania.

55-miles southwest of Pittsburgh, the County is about as big as Dade and has about as many recreational attractions. These are, however, oriented to the area's summer as well as winter tourism. A visit in either season can find equally as many enlightening frivolities.

The area is tourist oriented. Situated along I-76, the Pennsylvania Turnpike, there are towns in the immediate region such as Breezewood that consist of about 20 motels and 15 gas station/garages — and that's it.

Somerset County, itself, is situated in Laurel Highlands, and the publicity brochures call it, "The Place to Play."

The key is that it could be relatively inexpensive if you're looking for a one week vacation. If your thing is winter fun — it'll double your pleasure.

From the rustic covered bridge over ice filled creeks, the visitor finds himself amongst the best of America's homeland.

The people are, on the whole, totally different from those found in urban America. They're warm, and take an interest in you even though they don't know you. And if you've ever stayed in a megapolis hotel you know you get the feeling like the management feels they are doing you the favor by coming there. Here it's the opposite.

Situated in the county is Pennsylvania's highest point, Mt. Davis. The peak, rising only 3,213 feet, isn't towering in comparison to the surrounding land of the Appalachians Highlands, but offers a magnificent view from the top of a fire tower.

To get the best out of your visit, start in the County seat, Somerset (Borough). The town of over 6,000 isn't very big, but one has to remember this is rural America. The people daily see and pass people they know on the town's two main business streets.

In fact, where Main Street and Center Avenue

**a county
— and a town
of beauty**



Somerset County courthouse stands out atop a hill at the center of the borough of Somerset. A neon lighted billboard contrasts the striking structure in this photograph.

meet is the town square. The area is decorated with benches and mini-parks.

The city itself boasts one motion picture theater (two in the winter when business is "booming"), a Daily Newspaper, "The American," one senior high school . . . and so on down the line . . . one, that is, of all the things that many urbanites are so used to having many of.

Small corner markets are

commonplace as are farms that sell wares, such as maple syrup.

The Somerset County Courthouse is near the center of town and stands out at night. It's on a small hill and has a brightly lit dome. For miles around the building marks the center of one of the oldest settlements in western Pennsylvania. The County, originally known as Bedford, was formed by "an act of the



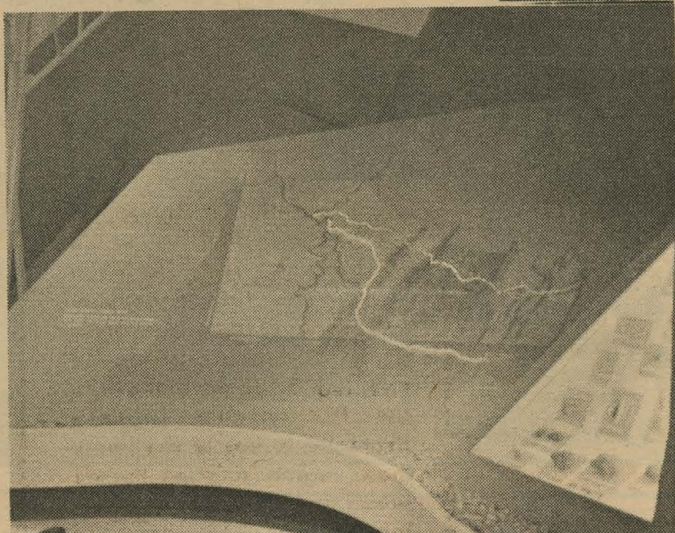
(Above) A tilting silo leans precariously against a barn in Somerset County.

(Below) East Main Street, looking from near the center of the Borough of Somerset shows a commonplace scene.



History

...is a medium size museum, located just outside the Borough.



Located on the grounds of the Somerset Historical Center, the covered bridge (far left) shows an unusual sign. (Above) a close up of a house constructed in 1801 shows thick fillings between the boards. (Left) a diagram shows the area.

Assembly" on April 17, 1795. The City is noted for being the first place west of the Alleghenies to print the Bible (in 1813). A Pennsylvania state historic marker locates the place on West Main Street where Fredrick Goeb ran his Bible print shop.

The next step has to be the Somerset Historical Center, that gives one background to the history buffs in understanding the area.

An audio-visual presentation (remarkably well done) begins the show explaining the development of the area. The establishment is open during the winter, how-

ever, by appointment only. There is no cost.

Moving farther out of the incorporated area the rolling countryside contains 2,300 farms; and one begins to

notice uninhabited forest lands.

Land which is open for exploration for the inquisitive as often compatible land-owners have not fenced or

otherwise prohibited passage.

Since you're never more than two miles from a road, it's pretty hard to get lost — but you shouldn't try.

Kooser and Laurel Hill

State Parks are nearby and offer boating, camping, fishing, hunting, picknicking and swimming (should weather permit). They are, in a word, fantastic. Seven Springs Ski Resort is Pennsylvania's largest ski facility, and is completely ornate and self contained.

Formal entertainment is there in the form of plays at various locations in the area. But the beauty of Somerset in summer, or winter is scenery, people and life itself. A break from the doldrums of urbanization and the push-push go-go life of America, the area is placid, but growing.

Pioneer Park Campground and the Ski Resorts may also be utilized simply for their services, and not for an individual's base of operations.

Completing your tour, a look into many side roads may find your shutters snapping on the camera as the countryside gives you a nostalgic feeling of things gone past too quickly. A simplicity and complexity in life wrapped up into one ball — and uniquely distributed across the backside of the Appalachian Mountains.

One attraction not on the guide books that shouldn't be overlooked is the covered bridges over the rushing brooks and streams.

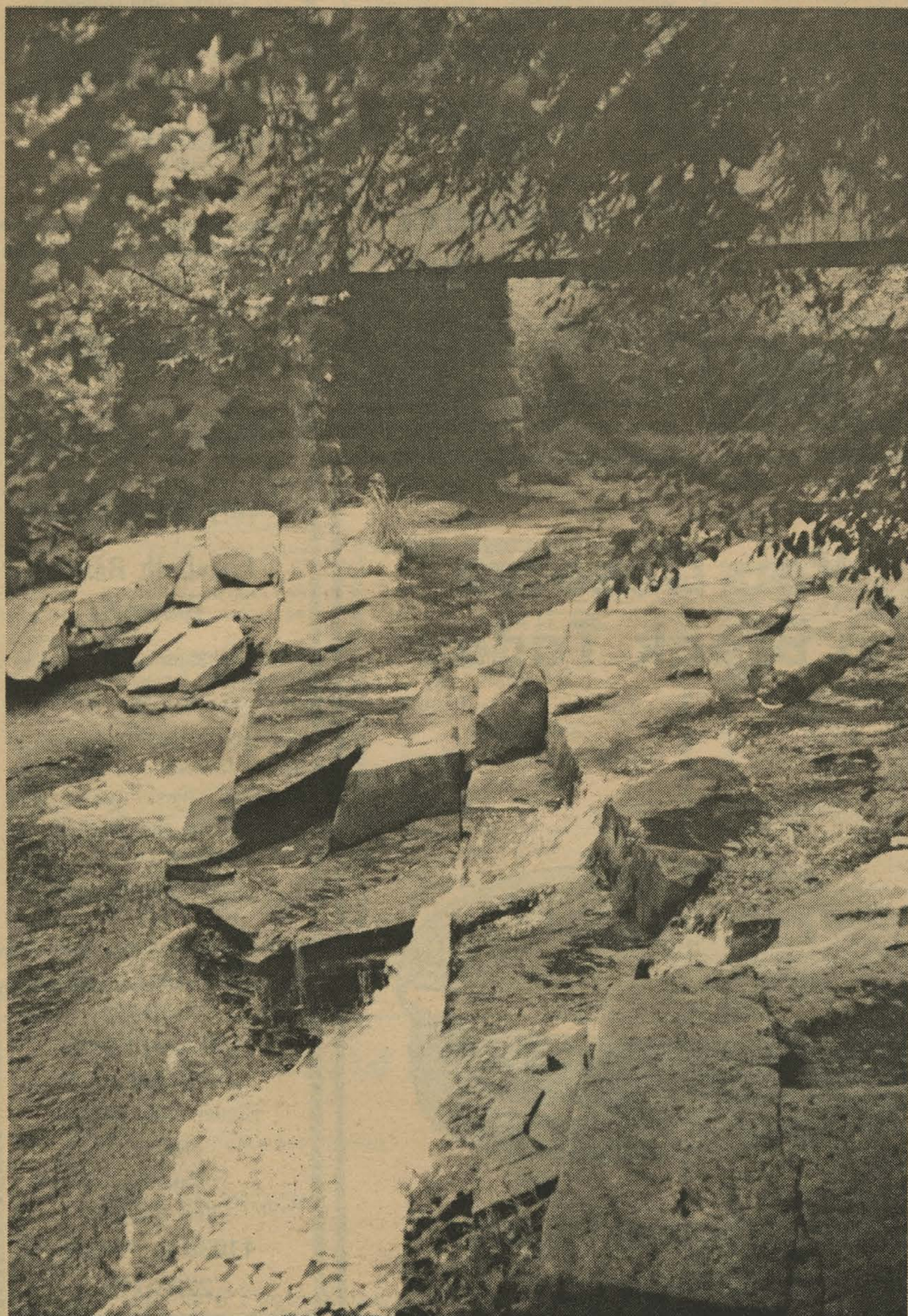
If you have the time, stop and talk to the locals.

That stands out in my mind about Somerset — people, and their attitude.

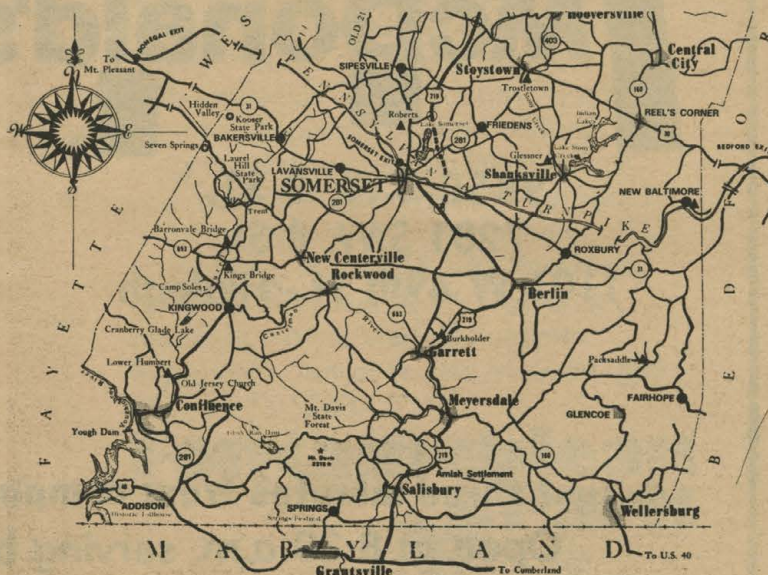
It's worth it to take a look at rural America — and not overlook it.



(Above) the Seven Springs ski resort is nestled about 10 miles out side of the Borough of Somerset. (Left) Packsaddle is a site that contains a covered bridge and an abundance of rocks in the stream that flows underneath. The result is the perfect scene of relaxation.



For the visitor, "The Laurel Highlands Scene," a bi-monthly publication (P.O. Box 22, Scottsdale, Pa., 25¢) can clue you in on the months' goings on.

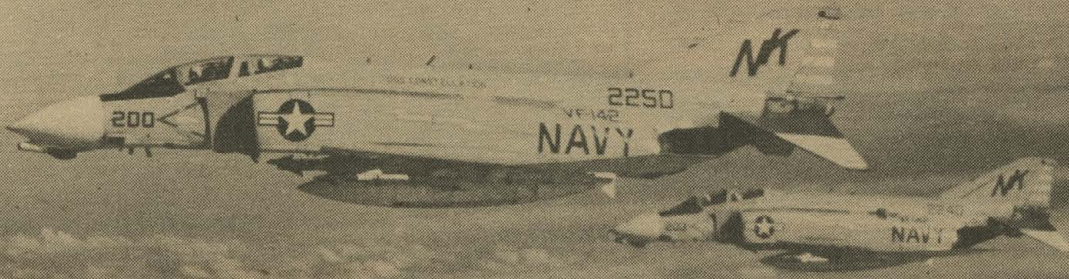


"Need reliable information about abortion and birth control?"
Call 949-7397"

SOMETHING FOR EVERYONE
The Name Says It All
Consignments Welcome
8-2/3% Discount with Ad.
7362 Bird Rd 264-8900

PREGNANT???
Free Tests
South Shore Associates
673-5011

THE NAVY NEEDS JUNIORS AND SENIORS FOR IT'S AVIATION PROGRAM



JUNIORS ASK ABOUT AVROC PROGRAM WITH A GUARANTEED FLIGHT BUT NO ACTIVE DUTY OBLIGATION

SEE YOUR NAVY OFFICER INFORMATION TEAM ON CAMPUS
NOV. 26, 27, 28 IN PRIMERA CASA

BARCLAY'S • DADELAND MALL

SANYO
stereo cassette tape deck
and AM/FM stereo radio.

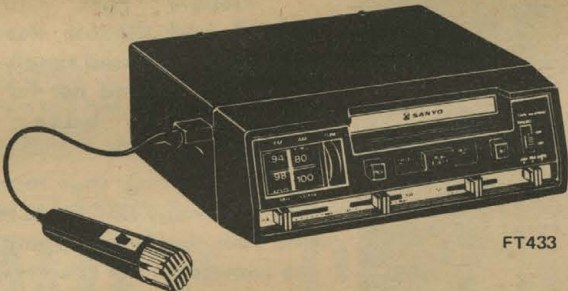


Model FT-867

PERFORMANCE ENGINEERED TO OUTLAST YOUR CAR.

The ultimate in sound systems. Enjoy superb stereo from FM broadcasts and pre-recorded cassettes. Push a button to record "live" in car or from FM stereo broadcasts. Economical way to build a cassette music library. This stereo music system performs perfectly even after years of rough roads and extreme temperatures.

- Precision cueing system
- Pause pushbutton
- Automatic eject
- Microphone with remote start/stop control



FT433

SANYO
car stereo
IN-DASH 8 TRACK TAPE CARTRIDGE PLAYER
AND AM/FM STEREO RADIO

Spectacular stereo from tape and FM broadcasts. Plus AM also. This unit has adjustable shafts to fit into dash of almost all cars. It's *performance engineered* by Sanyo to outlast years of rough roads and extremes of temperature and humidity. Super sensitive radio with mono/stereo switch. The 8 track tape cartridge player has a 2/4-channel matrix switch for listening to superb, matrix 4-channel sound when four speakers are installed.

- Fast forward to easily locate music selection
- Automatic radio-to-tape change
- Channel indicator lights
- Automatic or manual channel change

THIS IS JUST A SAMPLE OF THE MANY CAR PLAYERS
AVAILABLE TO YOU AT BARCLAY'S IN DADELAND
WE CARRY A FULL LINE OF LIFE-TIME GUARANTEED CAR SPEAKERS

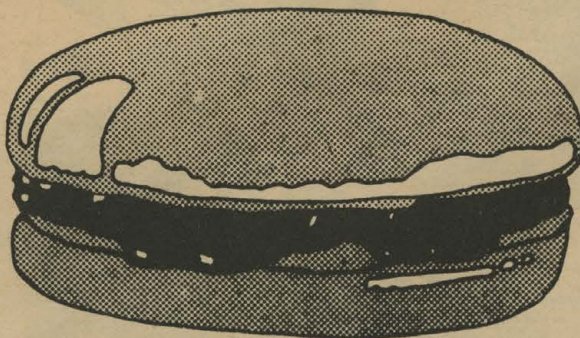


667-1624 or 667-1625



9850 S.W. 8 ST.
7281 S.W. 8 St.
1101 W 49th St - Hialeah

You Deserve a Break Today



Just three minutes from campus at Coral Park Shopping Center.
Open at 8:30 a.m. serving breakfast & a complete menu

Day care costs a concern

(Continued from page 1)

Currently other agencies are profuse in the area.

In 1971 the amount of centers went up from 198 to 288, while the number of children using them rose from 9,226 to 12,363, Terry Spence reported.

He said that this includes all types of centers, such as United Fund, industrial housing, parental groups and churches.

Locally there are six day care centers that range in cost from \$5 to \$20 a week. Others not so close go as high as \$25.

Many, though, draw a line about the services they perform and this is often the difference. Day care centers that provide simple custodial care are not what FIU is looking for. It's not what the county apparently is planning either, at their five sites.

"Day care is one of the top feminist issues for self-realization," Dr. Charlotte Tatro, of the Institute of Women here, said.

"This is not an institution, the children do go home with their parents at night," Terry Spence, assistant dean of student services said.

"We don't expect too much help from those who need the center, they are frequently working and going to school. They don't have time to help us. But we need time from those who can spare it . . . and their moral support," Barbara O'Nan, said.

Information 446-5938

MAHAVISHNU ORCHESTRA

Featuring

JON McLAUGHLIN

SPECIAL GUEST
ARGENT

Plus

PAPA JOHN CREACH

3 GREAT BANDS

MIAMI JAI ALAI
SAT. NOV. 24

\$5 ADVANCE-\$6 DOOR



PERSONALS

Earn academic credit. Work for "The Good Times" hours arranged. Variable credit 1-5 per term. Immediate openings Advertising & Business Dept. Call Joe or Mark x2842.

Preregister, its for your own good. Win a \$250 stereo sound system donated by Hi Fi Mart.

Dear Don and Emma. We need a short. Love, The Good Times Staff.

Dear Joe: Happy Birthday, No. 30. The Business Staff.

HELP WANTED

COOKWARE SALESPEOPLE WANTED. Possibly earn up to \$1000 plus during month of November. Set your own hours. 635-1574 6-10 P.M. for appointment

STUDENT EXPERIENCED in all phases home repair, improvements, water pumps & sprinkler systems. Rich 445-3663.

EARN while you learn. We will train. \$800-\$1000 month. Call Mr. Ross 751-5982.

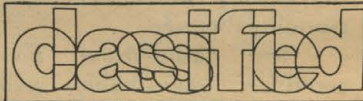
SERVICES

ACCURATE TYPIST — theses, resumes, manuscripts, statistical, etc. (reasonable) Michelle — 445-6114.

CLAIRE'S STENO & NOTARY, 220 Miracle Mile, No. 208; 2nd flr. Reports, manuscripts, letters, affidavits, applications, resumes, briefs, marriages, alien 325A forms, etc. 443-5585 226-3374.

JEWELRY

OM JEWELRY . . . Handcrafted designs in gold and silver. 3070 Grand Avenue. Coconut Grove, 445-1865.



ATTENTION MATH STUDENTS

Course Date Changes

MAS 365 NUMERICAL ANALYSIS
CO1 5.0 TF 1-3:15 Fisher

MAS 335 INTRO STST ANAL I
CO1 5.0 TR 6-8:15

Hang:

Robert F. Kennedy

Henry David Thoreau

Elizabeth Barret
Browning

Plus All Signs of The Zodiac

★ ★ ★

Burned, cracked, mounted on cork, framed and ready for hanging. These unique wall plaques are now available at the FIU Book Store.

(Also available at
Pier 1 Imports)

PRIMO'S

ITALIAN FOOD

Lunch 11:30 - 2:30

Dinner 4:30 - 10:00

Eat In

Take Out

Beer & Wine

11030 W. Flagler

223-9119



HUITEMA

Wrestlers face M-D South Friday

The Sunblazer wrestling team hopes it doesn't rain tomorrow when they open their season with an exhibition match against Miami-Dade Community College South.

The 3 p.m. match will be on the Plaza between Primera Casa and Deuxieme Maison.

The match will be a first at Florida International as part of a new plan to increase student interest in the wrestling program.

Coach Sid Huitema has been preparing his wrestlers for the 1973-74 season in daily practice sessions.

"Anytime you start a season, a coach has to work with each individual player teaching him fundamentals and working on his weaknesses," Huitema said. "This year has been no exception."

Huitema is looking for a much different season than the Sunblazers had in their last year. In their first year of competition, the grapplers were 0-8.

"Last year there were not enough wrestlers to fill each weight class in the dual meets. If you go into competition knowing you have already given the opposing team 20 points because you can't fill each class, I guess it is pretty difficult to think you can win," he said.

Huitema will be working with very few experienced senior wrestlers and the incoming juniors will have to make up most of the weight classes.

"We've got a young team, but I don't think that will stop us from winning a majority of our matches. The boys have a winning attitude, and I think that they are willing to work hard to reach their personal and team goals," he said.

The Sunblazers entered their first competition in the 1973 Killian Open Wrestling Tournament.

Mike Szabo placed first in the 130-pound weight class for the Sunblazers. Szabo was also awarded the Outstanding Wrestler Trophy.

Along with Szabo, Florida International had two second-place finishes by Mark Hewitt (120 lbs.) and Don Dallatore (175 lbs.).

The third-place finishes were turned in by Dave Folmer Ed Puntervold and Ira Paul. Dave Sporli and Joe Gluckman placed fourth for the Sunblazers.

"Szabo really was outstanding in the Killian (Open)," as were some of our other wrestlers, Huitema said. "He made history for the University by becoming the first champion wrestler in the school's history."

Huitema is hoping for good weather Friday, and a strong turnout of interest students for their exhibition match.

"This match will give the students an opportunity to watch what I hope will be an interesting and successful match against Miami-Dade South. I just hope it doesn't rain," he said.

Netters in tourney in Tampa this week

The Sunblazer tennis team has been invited to play in the University of South Florida Fall Tennis Tournament, Nov. 15-17, in Tampa.

The netters have been practicing daily at the Kendale Lakes Country Club in preparation of the 1973-74 season. Coach Bill Fleming's crew will be vigorously trying to improve a first year's record of 19 wins and 20 losses when they begin dual competition early next year.

In their initial season, the Sunblazers took on cross town rival, the University of Miami Hurricanes, which captured a 5th-place finish at the National Collegiate Athletic Association finals last year.

They also met Miami-Dade Community College North, last year, which finished second at the National Junior College Athletic Association Championships in 1973.

Though the Sunblazers lost to both squads, Fleming believes his team stands a better chance of winning this second time around.

"We were weakened last year half way through the season by the loss of several of our top players," Fleming said. "I think we did quite well with the group we had."

The netters have Rudy Vargas, Robert Walker, Bob Helin, Dick Ewers, Bob Hecht and Bob Slater, returning.

Fleming bolstered his team by signing two new players to grant-in-aid scholarships. Jim Payne of Grand Rapids, Mich., and Chip Spiller, of Central Florida Community College, Ocala.

"Last year we were dependent upon Vargas to carry us in most of the matches. Rudy has improved his play this year and will continue his steady performances, I'm sure," Fleming said.

Jim Payne will be the No. 1 singles man, however, Fleming said. He'll be followed by Chip Spiller, Rudy Vargas, Mike Purtz, Bob Helin and Ken Deutsch in the tournament this week.

"George Sardina is recovering from an operation on his ankle so he'll only be used in the doubles competition. When he is fully recovered, I think George will be pushing Payne and Spiller for the No. 1 singles spot," he said.

The Sunblazers will be playing against South Florida, Tampa University and Jacksonville University in the USF Invitational.

"USF will probably give us the most competition," Fleming said. "I don't see Tampa and Jacksonville as top teams."

Construction is now into its fourth week on the recreational complex and Fleming is keeping his fingers crossed that there will be no delay in the completion of the courts.

Carrer opportunities available

Office of Career Planning

Qualified students and alumni interested in participating in the various Career Planning programs and services must complete a General Registration Card. Registrants who are specifically interested in having on-campus interviews with representatives of the organizations listed here will be required to complete specialized Personal Data forms.

Forms are available in PC 220.

Nov. 15 — Fidelity Union Life (Majors in chemistry and marketing) for a position in technical services and development.

Nov. 19 — Touche, Ross and Company (Accounting) for a position as a staff accountant.

Nov. 19 — Upjohn Company (Biology, Pre-Dental, Pre-Medical) for positions as a pharmaceutical sales representative.

Nov. 20 — Metropolitan Life Insurance Company (Business) for positions in sales and management.

Nov. 21 — Metropolitan Life Insurance Company (Business) for positions in sales and management.

Nov. 26 — U.S. Marine Corps (any major) for positions as officer candidates.

Nov. 26 — Alexander Grant Company (Accounting) for positions as a staff accountant.

Nov. 27 — U.S. Marine Corps (any major) for positions as officer candidates.

Nov. 28 — U.S. Navy Corps (any major) for positions as officer candidates.

Nov. 28 — U.S. Navy Corps (any major) for positions as supply officers and aviation officers.

Nov. 29 — Walgreens Drugstore (Marketing, management) for positions as a manager trainee.

Nov. 29 — U.S. Navy Corps (any major) for positions as supply officers and aviation officers.

STUDENTS! CRUISE TO MEXICO ONE WEEK \$169.00

On the brand new M/S **BOLERO**
Quad Cabin and All Meals included

VISIT THE PORTS OF COZUMEL, PORTO MORELOS, VERACRUZ & KEY WEST.

ACROSS THE UNIVERSE STUDENT TRAVEL BUREAU
A Division of Yellow Travel Inc.
8930 Bird Road — 223-6472



FINAL TWO WEEKS AT COCONUT GROVE PLAYHOUSE
OPENING NOV. 27th

AT THE **BEACH THEATRE**
426 LINCOLN ROAD MALL, MIAMI BEACH
PHONE: 532-5531

Thru November 25
Group Sales Contact:
Audrey 445-2581

Tickets on sale at
Jordan Marsh, Downtown,
163rd St. & Dadeland;
Miami Beach Radio;

Ticketron Outlets in
All Sears & Jefferson Stores

The Coconut Grove Playhouse

444-9831
3500 Main Highway,
Miami

RESEARCH MATERIALS ALL TOPICS

Write or call for your up-to-date mail-order catalog of thousands of outstanding research papers. Enclose \$1.00 for postage and handling.

WE ALSO DO CUSTOM-MADE RESEARCH

CAMPUS RESEARCH

1429 Warwick Avenue (Suite #1)
Warwick, Rhode Island 02888
(401) 463-9150

RESEARCH

Thousands of Topics
\$2.75 per page

Send for your up-to-date, 160-page, mail order catalog. Enclose \$1.00 to cover postage (delivery time is 1 to 2 days).

RESEARCH ASSISTANCE, INC.
11941 WILSHIRE BLVD., SUITE #2
LOS ANGELES, CALIF. 90025
(213) 477-8474 or 477-5493
Our research material is sold for research assistance only.

The Good Times are Olsten Temporary Times

WORK WHERE YOU WANT

WHEN YOU WANT

Highest Pay Rates in Miami

Bonuses

INTERESTING ASSIGNMENTS AND PEOPLE

Olsten Temporary Services

1440 Biscayne Blvd.

(opposite Jordan Marsh) 377-8174

POETS

Study the craft of poetry with distinguished British poet, George Barker.

ENG 541 Writing Poetry.

POETRY LOVERS

Mr. Barker is also conducting a class on some of the major British and American poets of the twentieth century.

ENG 490 Reading Poetry.

ATTENTION STUDENTS

THE LIBRARY WILL BE CLOSED
FOR THE THANKSGIVING HOLIDAYS
THURSDAY THROUGH SUNDAY
NOVEMBER 22-25

PLEASE PLAN YOUR RESEARCH NEEDS AHEAD TO AVOID INCONVENIENCE.
(DURING THE SHUT-DOWN, A CREW WILL COMPLETE THE SHIFTING OF CATALOG CARDS TO EXPAND INTO NEW CATALOG CASES. THIS WILL DOUBLE THE SIZE OF OUR CARD CATALOG.)

5% down on a condominium in the Park.

Now it's easy to buy a 1 or 2 bedroom condominium in "the Park." And live the easy life. Beautiful lake and golf course views. Country club-like recreation: Tennis. Heated swimming pools with sundecks. Gyms. Saunas. Game rooms with ping pong and billiards. And no ground or recreation lease to cost you more. 5% down moves you right into The Parkwoods condominium community. From \$25,100. Reception center at 88th Ave. & W. Flagler St., Miami, 1 minute west of Palmetto Expressway entrance and Midway Mall. Phone 223-5243.

Fontainebleau Park



Appliances by Westinghouse

Horse World Ranch

HORSES FOR RENT, SALE
HAY RIDES
HORSES BOARDED



102 Avenue & Flagler Street / Phone 223-0843