

2-22-2010

The Beacon, February 22, 2010

Florida International University

Follow this and additional works at: https://digitalcommons.fiu.edu/student_newspaper

Recommended Citation

Florida International University, "The Beacon, February 22, 2010" (2010). *The Panther Press (formerly The Beacon)*. 333.
https://digitalcommons.fiu.edu/student_newspaper/333

This work is brought to you for free and open access by the Special Collections and University Archives at FIU Digital Commons. It has been accepted for inclusion in The Panther Press (formerly The Beacon) by an authorized administrator of FIU Digital Commons. For more information, please contact dcc@fiu.edu.



Editorial: SGC-BBC elections in disarray

PAGE 4



Baseball checks off two more wins in double header

PAGE 8

SPOTLIGHT

AT THE BAY PAGE 3

Resident students at Biscayne Bay Campus have a craving for meal plans, expanded on-campus dining options, and extended hours of operation.

AT THE BAY PAGE 3

During the Food 4 Talk event hosted by the Honors College, students and professors chat it up.

OPINION PAGE 4



SGA: Discussions about dissolving Panther Rage and the Graduate Students Association are getting more pronounced within the Senate.

OPINION PAGE 4

The Republican Party is on track to major victories in November. What direction does the GOP need to go in to assure it keeps afloat?

LIFE! PAGE 5

Women Who Lead: a conference that teaches women how to empower themselves.

LIFE! PAGE 5



The Beacon Reviews: The Wolfman – Steve Mesa discusses this recent remake starring Benicio Del Toro.

SPORTS PAGE 8

Men's Basketball: The Golden Panthers fall to local rival the Owls in a close match-up game.

UPCOMING EVENTS

National Pancake Day, Feb. 23, 7 a.m. - 10 p.m. IHop will be giving away a free stack of buttermilk pancakes; donations go toward Children Miracle's Network.

Rock Band Tournament, Feb. 23, 12:30 p.m. Play Rock Band for \$1 at the GC Porter Davis Game Room; proceeds go toward Relay for Life.

Miami Heat Invasion Pep Rally, Feb. 24, 12 - 2 p.m. Get pumped up at BBC's Wolfe Center, part of FIU's Take-Over of the Miami Heat.

—More events can be found in our Monday and Friday issues of Life!.

WEATHER



MONDAY
Showers
LOW: 68 HIGH: 74



TUESDAY
Partly Cloudy
LOW: 64 HIGH: 80



WEDNESDAY
Scattered T-Storms
LOW: 55 HIGH: 76

CONTACTS

Editor in Chief 305-348-1580
chris.necuze@fiusm.com

MMC Office 305-348-2709
news@fiusm.com

BBC Office 305-919-4722
bbc@fiusm.com

Tips & Corrections 305-348-2709
tips@fiusm.com

Advertising 305-348-6994
advertising@fiusm.com

FIG innovator dead at 60

JORGE VALENS
News Director

Professor Jeffrey Knapp, 60, director for the Academy of the Art of Teaching at FIU passed away on Feb. 17 after a nine-year battle with cancer.

Knapp began his 20-year tenure at the University as a composition professor in the English department. He went on to serve as the director for the First-Year Interest Group program and later became the director of the Academy for the Art of Teaching, according to his *Miami Herald*



KNAPP

obituary.

"He knew the value of sharing an intellectual experience with others," said Dr. Lidia Tuttle, associate dean for undergraduate education regarding Knapp's work with FIGS.

University Ombudsman Larry Lunsford noted Knapp's dedication to not only teaching but also to learning.

"[He] never stopped learning," Lunsford said.

Lunsford credited Knapp with the modernization of the FIG program 10 years ago, specifically the program's textbook, adapting it for a new genera-

tion of students.

Knapp was also the recipient of the University's President's Access and Equity Award in 2009, according to the College of Arts and Sciences Web site.

"He was this brilliant man who was funny and warm," said Associate Director of Campus Life at the Biscayne Bay Campus Vicky Owles.

"I don't think he realized the impression he made on people."

Owles met Knapp when she joined the University in 2001 teaching first-year experience classes.

KNAPP, page 2

SGC-BBC

Council 'struggles' with few members

MAUREEN NINO
Asst. News Director

The Student Government Council at Modesto Maidique Campus met its Feb. 18 deadline to accept campaign applications, but its Biscayne Bay Campus counterpart is lagging behind without an elections commissioner, elections committee and a senate that has not met quorum in two sessions.

"Our elections commissioner [Whitney Dean] is no longer a member," Sholom Neistein, SGC-BBC president announced at the Feb. 17 meeting.

According to Neistein, Dean's removal has caused a "terrible strain."

However, he did not specify the reasons for her dismissal, only citing it was due to her failure to meet certain technical requirements for Student Government Association.

"Ironically, we have had an elections chair all year and SGC-MMC did not have one until a month ago – but they have one when it counts," said Rafael Zapata, assistant director of Campus Life and SGC-BBC advisor. "I think it is a timing issue and I wish we would have started the [elections] process a little earlier."

According to Zapata, a new elections commissioner will be appointed at Monday's senate meeting.

Based on the current elections

SGC-BBC, page 2

THE MIAMI PROJECT



CHRIS ADAMS/THE BEACON

David Del Cristo presents the six "sweethearts" candidates (three shown above) that are running to be the face of Sigma Phi Epsilon's philanthropy The Miami Project, which benefits spinal cord injuries. The "Sig Ep Block Party" was held on Feb. 19, between the Gold and Blue Parking Garages.

Interim dean named foundation chair-elect

MELISSA CACERES
Staff Writer

Marie McDemmond, interim dean of the College of Education has been appointed as chair-elect to the board of The Lumina Foundation.

The Lumina Foundation is a private foundation that serves to promote success in education beyond high school through the distribution of grants along with campaigns.

She will begin her three-year tenure in March of 2010.

"As an African American woman, there is always room to be a 'first,'" McDemmond said, who has an extensive background in higher education. "But this, to me, is a crowning achievement in my career because this is a national recognition."



MCDEMONND

While this will be her first time holding the position, McDemmond has been part of the foundation since its beginnings back in 2000.

Now as chair-elect, she hopes to engage in more public speaking to promote the knowledge that comes

with higher education.

"Our one big goal is increasing graduation rates. The United States use to be No. 1 in the world and that gave us a competitive advantage which helped in things like national security," McDemmond said.

"Now we're No. 10 in the world. We've slipped down so far that it is through college degrees that we will be able to retaliate."

McDemmond, who has held the temporary dean position since June 30, 2009 and also holds the title of president emeritus of Norfolk University, has a history of admin-

istrative roles within numerous educational institutions.

At Florida Atlantic University, she served as vice president for finance as well as chief operating officer.

She has also assumed finance positions at Atlanta University, Emory University, University of Massachusetts Amherst, as well as the system of community colleges in Massachusetts.

"Marie's extensive experience in higher education, from serving as president of a leading historically black university to her role

DEAN, page 2

Senator absences ‘strain’ quorum

SGC-BBC, page 1

code, Section II, Article E, the SGC-BBC president will fill the vacancy by appointment after an open application process. This appointment is then subject to approval by simple majority of the SGC-BBC senate.

The elections commissioner is responsible for instructing all election officials of proper election codes and oversees the elections committee.

In the absence of the committee, the elections commissioner must use the judicial board to resolve any violations.

Christin “CiCi” Battle, SGC-BBC vice president, has assigned herself the job of revising the elections code.

These revisions will not affect this semester’s elections and, if passed, will go into effect in 2011.

A bigger problem for SGC-BBC has been the fact its senate has not met quorum during its

Feb. 8 and Feb. 15 meetings, limiting its ability to conduct business.

To meet quorum, there must be half plus one of the total number of senate members present in order to appoint members, a total of four senate members.

Currently there are only seven senators remaining from the 17 positions that were filled in the beginning of the semester, according to Zahra Arbabi Aski, SGC-BBC lower-division senator.

According to Zapata, the resignations of senators – and three speakers of the senate in the last semester and a half – has had an effect.

“There have been a couple of meetings where we have not made quorum. I know that we lost some people and I think it has been difficult for them to get back on track,” Zapata said.

“We also lost the senate chair. [Nickolay Chikishev] took over when Tanya [Williams] resigned.”

Chikishev, SGC-BBC lower-division senator, was appointed as speaker of the senate in January.

Furthermore, during the Feb. 15 meeting, Chikishev pointed out the need for the dismissal of several senators.

“We removed five people,” Chikishev said. “I have to notify some people they are being dropped.”

According to Zapata, a lack of urgency is apparent.

However, Zapata believes that the workflow has not been disrupted since issues can also be discussed during Wednesday’s SGC-BBC meetings.

“I think [the senators think] if they do not go on Monday they can always vote on [an issue] on Wednesday. I do not know if that factors into why they cannot make meetings,” Zapata said. “But unfortunately, some of these senate meetings have been a waste of our time since we don’t have quorum. I don’t like that because it

takes away the purpose of having senate meetings.”

According to Chikishev, to help alleviate the problem of not meeting quorum, the council has discussed promoting interns to paid senate positions.

Applications for candidacy during the Spring 2010 SGC-BBC elections will be sent out Feb. 23, and will be due March 9.

Students will be informed of the application’s availability through e-mails, flyers and Facebook messages, Zapata said.

Candidates will also have to attend two informational meetings on March 10 and 11.

Although these meetings are not mandatory, they are highly recommended.

“If the candidates cannot attend the meetings but get the information from the election chair, then that would count as getting the information,” Zapata said.

“As long as they get the information from one of us, it is fine.”

SGC-BBC elections will take place on March 29 and 30.

Candidates will have two weeks to campaign.

New chair aims to carry on objectives

DEAN, page 1

as chief financial officer at several top colleges, will serve the Foundation exceptionally well,” said the Foundation’s Chairman John M. Mutz in a press release.

“Her great depth and knowledge of higher education issues will be of great value to her board leadership role as we strive to ensure that 60 percent of Americans hold high-quality college degrees and credentials by 2025.”

Throughout her career, she was appointed to the President’s Board of Advisors on historically black colleges and universities.

Both The American Association of State Colleges and Universities’ leadership lecture and Norfolk State’s research center were named after her.

With their focus on students of low income and minorities, The Lumina Foundation has assets that total around \$1.5 billion and deals out about \$50 million in grants aimed at research, innovation, communication and evaluation.

“Marie embraces Lumina’s commitment to increasing college attainment rates as a key to both individual prosperity and promoting social stability in an increasingly competitive global environment,” said Jamie P. Merisotis, the foundation’s president and chief executive officer in a press release.

“As a founding Lumina board member, she also brings extensive experience to her task of leading the board at a critical time of growth and change at the Foundation.”

Owles: University loses valuable member in Knapp

KNAPP, page 1

Owles added that Knapp wanted to take FIU to the next level in terms of services offered to first-year students and that the University had “lost a valuable member.”

Services for Knapp were held Feb. 19 at Temple Beth Shalom in Miami Beach.

Knapp will be honored during Relay for Life’s candlelight Luminaria event on the

evening of March 5, according to Relay for Life Volunteer and Recruitment Chair Janila Mirzataheri.

He was the largest sole contributor for Relay For Life, raising \$5,610 for the event in 2009, according to the University.

Knapp is survived by his wife Dina Knapp, daughters Ariel Knapp and Astra Schwartz Dorf, and granddaughter Athena Dorf.



E-BOARD AND PRODUCTION STAFF

EDITOR IN CHIEF
CHRISTOPHER NECUZE

PRODUCTION MANAGER
CHRISTOPHER LEE ADAMS

COPY CHIEF
PAULA GARCIA

NEWS DIRECTOR
JORGE VALENS

BBC MANAGING EDITOR
JASMYN ELLIOTT

LIFE! EDITOR
ASHLYN TOLEDO

SPORTS DIRECTOR
JONATHAN RAMOS

OPINION EDITOR
DAVID BARRIOS

PHOTO EDITOR
ALEX GARCIA

ASST. NEWS DIRECTORS
GABRIEL ARRARAS, MAUREEN NINO

ASST. LIFE EDITOR
JAMES RADZIEWICZ

ASST. OPINION EDITOR
ODETTE BARRIENTOS



INFORMATION

The Beacon is published on Mondays, Wednesdays and Fridays during the Fall and Spring semesters and once a week during Summer B. One copy per person. Additional copies are 25 cents. *The Beacon* is not responsible for the content of ads. Ad content is the sole responsibility of the company or vendor. *The Beacon* is an editorially independent newspaper partially funded by student and services fees that are appropriated by student government.

The Beacon office is located in the Graham Center, Room 210, at the Modesto Maidique Campus and in the Wolfe University Center, Room 124, at the Biscayne Bay Campus. Questions regarding display advertising and billing should be directed to the Advertising Manager at 305-348-2709. Mailing address: Graham Center, Room 210, Miami, FL 33199. Fax number is 305-348-2712. Biscayne Bay Campus is 305-919-4722. Office hours are 9 a.m. - 4:30 p.m., Monday through Friday. E-mail: Beacon@fiu.edu. Visit us online at: www.fiusm.com.

ASST. SPORTS DIRECTORS
STEPHANIE GABRIEL, JOEL DELGADO

BBC PHOTO EDITOR
TOMAS LOPEZ-MELIS

PAGE DESIGNERS
JESSICA MAYA, LEONCIO ALVAREZ, ASHLEY SALAMANCA, CHRIS TOWERS, LEXA GARVEY

COPY EDITORS
CARLA GARCIA, LEONCIO ALVAREZ, ASHLEY CAPO, MARIE DUNBAR, ASHLEY SALAMANCA

RECRUITMENT DIRECTOR
ROSALYN DELGADO

ADVERTISING MANAGER
BOBBY JOE BRACY

BUSINESS MANAGER
TATIANA CANTILLO

DIRECTOR OF STUDENT MEDIA
ROBERT JAROSS

ASST. DIRECTOR OF STUDENT MEDIA
ALFRED SOTO

YOU HAVE TO BE HERE®

BUFFALO WILD WINGS®
NOW OPEN

Drink specials for FIU students with a valid student ID starting at 9PM Sunday - Thursday

\$.50 Wing Tuesday
\$.60 Boneless Wing Thursday

Located at the Dolphin Mall Located in Cutler Bay
305-513-2660 **305-238-8850**

Hours of operation:
Sunday - Thursday 11AM - Midnight
Friday & Saturday 11AM - 2AM

Featuring Big Screens & HDTV's - Award-Winning Wings
14 Signature Sauces - The Hottest Sports Action - Full Menu
FREE Buzztime Trivia - Wing Tuesdays - Boneless Thursdays
UFC events and Boxing with no cover ever!
Free Wi-Fi - Dine-in or Takeout!
Facebook: Buffalo Wild Wings - Miami



BUFFALO WILD WINGS®
GRILL & BAR

buffalowildwings.com

BAY VISTA HOUSING

Students lament lack of campus dining options

MELODY REGALADO
Staff Writer

Biscayne Bay Campus student residents are hungry for more.

During the Bay Vista Housing forum held on Feb. 9, students expressed their frustrations with the lack of meal plans and the hours when dining facilities are open to BBC students.

Modesto Maidique Campus student residents and commuters are able to purchase meal plans with a set number of meals per week at a fixed rate at the Fresh Food Company, which also includes Panther Bucks useable at dining locations on either campus.

BBC students may use Panther Bucks but are not offered meal plans.

“One of the challenges with establishing a meal plan is that there is a necessary number of students needed to support it,” said Rosa Jones, vice president of student affairs. Jones said BBC has not had enough interested students when the option has been explored in the past.

The drastic differences that exist between the student populations of both campuses are also proportionate to their meal options.

MMC students have several dining options such as Burger King and Pollo Tropical in the Graham Center. Substantial dining options are found in locations elsewhere such as C3 Breezeway Café, which is a convenience store in the University Park Towers Resident Hall that features Bene Pizzeria and a Boar’s Head Deli; and Express Convenience Store inside of the Green Library.

Dining options at BBC are limited to Bleeker Street, Grille Works, and Moe’s Southwest Grill.

“MMC gets Starbucks. We get Bleeker Street,” said Eddy Morales, a junior broadcast major. “I’ve never heard of Bleeker Street.”

According to Jones, the expansion of BBC dining options is on the table.

“The University was considering placing a small food service within the [Biscayne Bay] library, similar to one recently added

at MMC,” said Jones.

Efforts for the mini mart in the Library are being led by Business Services. Jeff Krablin, assistant vice president of business services, could not be reached for comment.

Even so, students at BBC are looking for a stronger effort in expansion.

“I wish there was still a Subway there, but Moe’s has been my go-to place for my ten-hour Mondays,” said Jenni Hanlon, a junior public relations major. “And I think we should definitely have a Starbucks like South campus does.”

Jones also mentioned looking into expanding the hours dining is open. At MMC, some dining locations are open until midnight or on weekends.

However, the BBC locations are open Monday through Friday until 4 pm, closing a bit earlier on Fridays at 3pm, and are not open on weekends.

This leaves students who have evening classes and Bay Vista residents on campus with no dining options after 4 p.m.

CLEAN-UP WOMAN



SERGIO MONTEALEGRE/THE BEACON

Alternative Breaks site leader Valerie Pett, a senior hospitality management major, cleans up the bay on campus on Feb 12 as part of the Environmental Causes service project for Alternative Breaks.

“They should stay open until six because there are a lot of students who have 5 p.m. and 6 p.m. classes,”

said Hanlon.

In all, BBC has yet to satisfy student demand for more dining options and

longer hours of operation.

“I think we get the short end of the stick,” said Morales.

Students and scholars engage in deep discussions over dinner

STEVE VAYNSHTOK
Contributing Writer

Food, physics and a fervent atmosphere filled with fresh-faced students and seasoned alumni of FIU were present at Food 4 Talk. The event, sponsored by the Honors College on Feb. 18, brought together a very colorful crowd of patrons for a night of spirited discussions and debates.

As the doors opened at 6:30 at the Wolfe University Center Ball Room, the guests started piling in, including scholars from Daniel Alvarez, who received his Master’s degree from Harvard and whose topic was “Celibacy and the Church” to John Bailly; who has received a Master’s degree in fine arts from Yale.

The event had begun casually with guests coming in and taking their seats, then each speaker sat down at a table to eat and converse with guests.

I ended up at a table with Dr. Frederick Blevens, who received his Ph.D. from the University of Missouri and is currently a journalism professor at FIU. His topic was “The Media; How They Know What They Know.”

A rousing conversation ensued complete with conspiracy theories surrounding 9/11 and the current state of media framing along with propaganda. Blevens continued to elaborate about the media and how branding is a product-inspired marketing technique to market the make of any product rather than the product itself. Once the conversation ended I

had the chance to approach Blevens and get his opinion on this event.

“It is something that should be happening between professors and students as is,” said Blevens. “I do not see anything different in my opinion on the matter than a professor here might have, it differs only in perspective of who is speaking.”

Blevens and I went on to have a rousing conversation about the current affairs of music and how it is shaping the media.

“Independent labels are the new Mecca of the industry, that and giving music away for free,” said Blevens. “Extensive touring is all bands have left, that and merchandising. Then again, no one wants to end up like KISS.”

Jack Parker, Ph.D. from the University of Berkeley also had positive remarks towards his discussion.

“It was great, very interesting questions,” said Parker. “We deviated from the topic a few times, getting into things like the music and arts programs at Berkley, but I managed to find my way back on the road less traveled: good old fashioned chemistry.”

After a night of rousing topics I was not the only person leaving with a smug grin on my face, and a few cool new words in my vocabulary. Many other faculty members and students left feeling just as accomplished as me.

Alex S. who refused to give his full name, is a sophomore journalism major who appreciated the casual setting of this event. “It’s really great that something like this is available to us as students here. These are really

educated people who we can just sit there and shoot the breeze with. It is really educational,

but covertly, rather than ‘in-your-face,’ time to learn.”

TO READ *THE BEACON* EDITORIAL
ON BBC ELECTIONS, TURN TO PAGE 4

The Program in the Study of Spirituality
in the School of International and Public Affairs

presents

Spirituality and Entrepreneurship:
Contemporary Perspectives

with Patricia Aburdene

One of the world’s leading social forecasters for 25 years, Patricia Aburdene has helped thousands of organizations and millions of people make the most of social change and transformation. She has brought her message of “conscious capitalism” throughout the Americas, Europe, and the Pacific Rim.

February 24, 2010 | 4 pm - 6 pm | GC 140 | FREE

Co-sponsored by the Pino Center for Global Entrepreneurship

<http://spirituality.fiu.edu>

FIU

Arts & Sciences
FLORIDA INTERNATIONAL UNIVERSITY



THE BEACON | Editorial

With no commissioner or board, SGC-BBC elections highlight system's failures

Student Government elections are slated to take place in five weeks. During the last Student Government Council at Modesto Maidique Campus Senate meeting, a newly revised elections code was passed. Currently, two people sit on the SGC-MMC elections board, along with the elections commissioner Cristy Flores. After a slow start, MMC's state of affairs look promising.

The situation at Biscayne Bay, however, is not nearly as favorable and can only be described with one word: chaotic.

SGC-BBC currently has no official elections commissioner, board or anything that would denote work has begun on elections for this semester.

In an Oct. 2009 editorial, The Beacon opined that the structure of two governing councils was inefficient and that an SGA under a single president could more easily get things done.

Given the recent developments regarding not only the status of elections at SGC-BBC but also it's senate's inability to meet quorum, The Beacon feels that these circumstances serve to reaffirm the notion that a two council system just doesn't work.

As of Feb. 21, SGC-BBC has no elections board, no commissioner, and according to SGC-BBC President Sholom Neistein, there are no candidates that he knows of running for any senate positions as of this time. Candidate application packets, which include a copy of the constitution and the elections code, have also yet to be distributed.

Delivering these packets in a timely manner goes a long way in ensuring that potential candidates are informed and know of the general and academic requirements needed to run for office.

Having a standing elections commissioner will also go a long way in ensuring the process runs smoothly.

SGC-BBC has not specified the reasons for removing former Elections Commissioner Whitney Dean. While her removal may very well be justified, questions abound as to how long Dean was not satisfying the requirements and why the matter was addressed so late in the game.

"Ironically, we have had an elections chair all year, and SGC-MMC did not have one until a month ago," said SGC-BBC advisor Rafael Zapata. "But they have one when it counts."

Zapata has it right. For all its shortcomings, SGC-MMC is well underway in its preparations for elections.

However, one cannot expect the governing body to conduct timely business when even four out of its seven paid senators – the quorum, or minimum required to conduct an official meeting – fail to be in attendance.

The SGC-BBC senate has failed to meet quorum during its Feb. 8 and 18 meetings. Nevermind the fact that of the 20 total SGC-BBC senate seats available, only seven are currently occupied.

To say that this is unacceptable is an understatement. There is no accountability and a significant lack of oversight on the part of SGC-BBC Campus Life.

Reorganizing SGA into a single governing council will help avoid situations such as these. A unified council will not only be more efficient but also fall in line with University President Mark Rosenberg's message that this is one University.

In the end, Student Government as a whole is not only held accountable by *The Beacon* or Student Affairs, but they must ultimately answer to those who elected them: students.

By not conducting an organized and fair election, by not attending meetings and tending to their responsibilities, SGC-BBC is failing its constituency.

SGC-MMC

Dissolving GSA not the way out

DEAN WILLIAMS
Staff Writer

At the Senate meeting on Feb. 15, Student Government Association President Anthony Rionda discussed topics that were noted during the last University Wide Council meeting, including the possible dissolution of both the Graduate Student Association and Panther Rage.

These two organizations are governing councils under the SGA, and represent certain niches: GSA for grad students and Panther Rage for liaisons between Athletics and the student body

GSA is currently attempting to configure its association to better meet the needs of students. Within the GSA's annual estimated budget of \$120,000 (funded by activity fees paid by graduate and professional students), \$20,000 is allocated towards the cost of administration and \$50,000 is awarded to students pursuing research or attending conferences.

President Rionda briefly mentioned that should GSA be dissolved, SGA would match funding for research, providing more funding to graduate students to perform aforementioned tasks.

The president and vice-president of Media Affairs of Panther Rage, the University's spirit organization, made comments at the senate meeting in relation to the organizations possible dissolution. The president noted

that Panther Rage has undergone significant restructuring towards boosting school spirit for athletics, the governing council's primary function. It was also mentioned that the organization has experienced a steady decline in the allocations it received from SGA. Nevertheless, it has devised creative means through which to continue delivering on its function including last year's "Black Out Game," where crowds were drawn by PantherRage to celebrate the acquisition of new jerseys.

Section III of the GSA's constitution notes its mission as "to represent and promote the interests of the University's current and prospective graduate and professional student community by supporting scholarly activities and providing leadership, service and financial and social opportunities."

Graduate students at FIU are indeed members of the University community, but they require their own sense of community within the University community.

Students seeking advanced degrees require an organization on campus, sensitive to academic endeavors, where they will be able to associate with individuals who share similar interests.

Regardless of GSA's shortcomings, it is imperative to recall that graduate students rely on the GSA as a means for defining themselves within the University.

"Panther Rage exists to promote and maintain the highest level of school spirit possible at Florida International Univer-

sity," this is the purpose of Panther Rage, as defined by the organization's website.

Athletics at FIU is like a pie. You have dedicated coaches and support staff, talented athletes and unmatched physical facilities. Without school spirit, and more pointedly, an organization to effectively encourage students to attend baseball or football games, for example, the aforementioned qualities are meaningless.

Athletes play sports because they have passion to play sports. It increases their pride in their performance, however, when students show up to games in overwhelming numbers to support them.

While Panther Rage itself may have shortcomings, it doesn't belittle the fact that Panther Rage has succeeded in the past and could continue to succeed.

In addition to facilitating a multi-million dollar budget and administering a plethora of student programs, SGA would simply be taking on too much by adding graduate and professional students, as well as Panther Rage to its list of responsibilities.

Instead of dissolving these organizations, perhaps a temporary committee to conduct research and formulate solutions as to how both the GSA and Panther Rage can better equip themselves in achieving their proposed missions, and importantly, how both organizations can efficiently administer their budgets to weather these troublesome financial times.

Republicans in need of solutions now

JOEL DELGADO
Staff Writer

The last time a Republican held a senate seat in Massachusetts, it was during the Richard Nixon administration. But all that changed Jan.19 when Scott Brown shocked the nation by winning an election held to fill the vacancy left by the late Ted Kennedy.

It was a devastating blow for Democrats and it proved that the political landscape may be changing once again in 2010.

The question that remains is whether or not the GOP is ready to continue to effectively appeal to those voters looking for strong leaders that will listen to them.

It is no secret that the Republican Party is at a considerable crossroads.

This year will be very telling of where they are really going, if anywhere. Will the party return to its conservative roots or will it take a more moderate approach? Will it change the way it does business or will it stay in the course?

There is one thing that is certain when talking about the Republican Party: it messed up.

"At this point last year, people were saying the Republican Party was finished," said Jonathan De La Torre, currently the president of College Republicans at FIU. "But now I think we are going to make a comeback. We've shaped up our act. If what happened in Massachusetts doesn't send a message to the White House, they are in trouble."

The reason why Republicans lost in 2006 wasn't because of their principles, but because the party turned its back on those principles.

The party must establish itself as the party of solid, common-sense solutions; a party that is running on something bigger than just ideas and being the party of "No."

Republicans need to unapologetically stand on the side of life, on the side of economic prosperity and on the side of peace through strength.

At the same time, the party

also has to have crossover appeal with the growing number of independent voters that are in this country; those who are in the middle of the political spectrum.

The party needs to come up with big ideas and come up with alternatives to the ideas that Democrats on the left have proposed; ideas which are losing approval throughout the country.

For instance:

Let's talk real tax reform: the system is broken and needs to be changed. Have an honest debate about the FairTax and a flat tax in an attempt to come up with a system that is fair to all Americans; one that does not punish productivity, but promotes investment and creates jobs.

Let's talk about improving our schools and giving children access to a well-rounded education, including an emphasis on music and the arts to inspire creative thinking and problem solving.

Let's talk about coming up with a real plan to get off fossil fuels and start investing in

renewable resources in a way that will allow the economy to grow.

Let's talk about health-care reform that is focused on allowing competition in the system, allowing insurance companies to insure across state borders, cut wasteful costs that make healthcare unaffordable for a number of Americans, and put a focus on preventive healthcare.

And that needs to just be the beginning.

Going back to the roots of the movement that inspired a nation is a must for the party, looking at what Ronald Reagan stood for and embracing those principles. This party needs to reflect the idea that the strength of this country does not lie in its government, but in the ingenuity and willpower of the American people.

There was a time when people were held to higher standards. This party needs to allow itself to be governed by those standards and to honor those standards.

EDITORIAL POLICY

Editorials are the unified voice of the editorial board, which is composed of the editor in chief, management, and the editors of each of the five sections. The Beacon welcomes any letters regarding or in response to its editorials, send them to opinion@fiusm.com

DISCLAIMER

The opinions presented within this page do not represent the views of The Beacon Editorial Board. These views are separate from editorials and reflect individual perspectives of contributing writers and/or members of the University community.

SEND US YOUR LETTERS

Got a problem with parking? Want to give kudos to faculty? Or do you just have something to say about FIU? Send your thoughts in to opinion@fiusm.com or drop by our offices at either GC 240 or WUC 124. With your letter, be sure to include your name, major and year.

QUOTATIONATION

"It's now up to me to make amends, and that starts by never repeating the mistakes I've made."

Tiger Woods
during public apology for adultery

LEADING LADIES

WOMEN OF INDUSTRY SHARE THEIR KNOWLEDGE, EXPERIENCE



Beth Sobol, founder of Miami Fashion Week, will be the keynote speaker at MMC's Women Who Lead Conference. Lani Kane-Hanan, an ARDA Circle of Excellence Award winner, will be speaking at BBC's conference, held on March 5.

JAMES RADZIEWICZ
Asst. Life! Editor

A look at the daily news is enough to make almost anyone apprehensive of life after college. The job market grows tougher and the availability of jobs diminishes.

Though these difficulties seem insurmountable, the FIU Women's Center wishes to aid students with the drive and motivation to become leaders in industry.

Despite progressive action and development, women still face as many – and possibly more – obstacles in rising to leadership roles within their professions.

"Access to information is the hardest," said Zoëann Finzi-Smith, a graduate student in counseling psychology, and the graduate assistant for the Modesto Maidique Campus' Women's Center. "There are [opportunities] that women may not even know are out there. They need mentorship to get there."

The center's fourth annual Women Who Lead Conference will take place next month, with events planned for both campuses.

This series began several years ago, on a smaller scale,

seeking to offer advice, information and direction. At the time, the conference had only one panel and session.

With strong community support, Women Who Lead will now feature two breakout sessions, more panels and opportunities for networking and volunteer work.

Discussion panels will be held with various women leaders from both the University and the local community.

Attendees will gain perspective from these events with topics such as "Developing My Leadership Plan" and "Breaking the Glass Ceiling."

Joining the various women leaders, each conference will feature a leading woman of industry as a keynote speaker.

The Biscayne Bay Campus' conference will feature Lani Kane-Hanan, the senior vice president of Feasibility and Business Planning at the Marriott Vacation Club International.

A fellow University alumna, she received the ARDA Circle of Excellence Award in 2008 for her work in helping the American Resort Development Association prepare for its annual spring convention.

Beth Sobol, president of

Sobol Fashion Productions, will be MMC's keynote speaker for the conference.

She is no stranger to South Florida; she was the founder of Miami Fashion Week in 1999, an event that shone the spotlight on fashion designers from Latin America, the Caribbean and the world over.

Sobol understands business. She began as a model and now runs her own company along with being a respected international talent scout for modeling agencies. She also produces various trade shows for the industry.

"More knowledge and plans for the future," said Finzi-Smith when asked what attendees would gain from this conference. "Information from women who have been there."

Along with the conference and panels, attendees may opt to join a lunch with these women leaders to gain more experience and perspective.

BBC's conference will be held March 5 from 8:45 a.m. to 1:30 p.m.

The conference at MMC will take place on March 26, from 8:45 a.m. to 3 p.m.

These Student Government

WOMEN, page 6

THE BEACON REVIEWS: *THE WOLFMAN*

Del Toro brings *The Wolfman* to life in classic horror remake

STEVE MESA
Staff Writer

Horror remakes have had a recent bad reputation, from the pointless (John Moore's 2006 *The Omen*) to a complete waste of film (Rob Zombie's *Halloween II*). However, *The Wolfman*, directed by Joe Johnston, manages to be an entertaining and bloody tale while paying tribute to the original 1941 Lon Chaney Jr. film and other classic werewolf films.

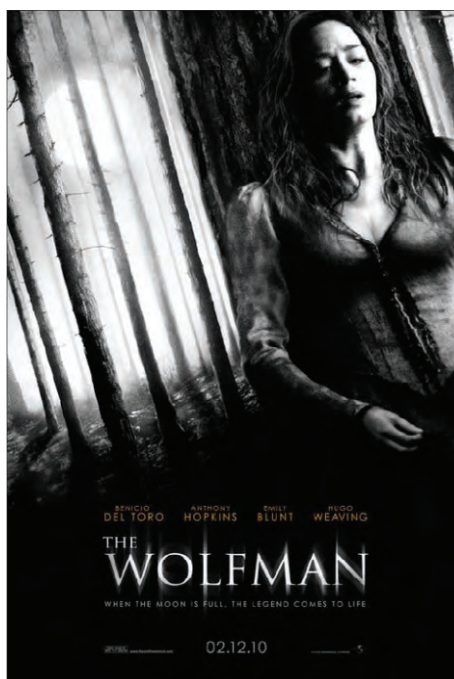
In 1891, several villagers of Blackmoor, England have been found beheaded, dismembered and disemboweled. The surviving villagers believe this was caused by the arrival of gypsies in their town. Law and order come in the form of Scotland yard inspector Francis Aberline (Hugo Weaving), who believes that a crazed lunatic is causing the deaths.

Meanwhile, Lawrence Talbot (Oscar-winner Benicio Del Toro) is a theatrical actor who travels back to his homeland in Blackmoor after receiving news from his brother's fiancée (Emily Blunt) of his brother's disappearance. When he arrives at his family

estate, he is reunited with his estranged father, Sir John Talbot (Oscar-winner Anthony Hopkins), who tells Lawrence that his brother's ghastly and grim remains were found. In search of who (or what) killed his brother, Lawrence has a very close encounter with a wolf-like beast and becomes the tragic victim of an incurable curse.

The casting for *The Wolfman* is great, but the performances by Benicio Del Toro and Anthony Hopkins really bring some class to this gothic horror movie. Del Toro reinvents the role played 70 years earlier by Lon Chaney Jr. by portraying Lawrence as the brooding and tragic man whose childhood is laced with tragedy. It also helps that Del Toro is able to work through the tons of makeup and prosthetics he wears in the film to create an expressive werewolf that does justice to his predecessor.

Hopkins' role offers some intentional laughs with lines delivered with quick wit, but his role as the father of the doomed and cursed man is radically different from the original by the time the film reaches its climax. However, this change is welcome as it is a fresh breath of originality from the many



remakes which become a literal, modernized copy of the original movie.

Not to be outshined by the two Oscar winners, Hugo Weaving does a decent job as the inspector. His character has an incredible

arc throughout the film that leads to an unexpected ending. It also injects a conflict where Lawrence is basically "on the lam" after things become a little hairy – and bloody.

The acting ensemble's weak link would be Emily Blunt, whose character becomes useless through most of the story and shares no chemistry with Del Toro. However, as the story reaches its climax, her character becomes more important as she is destined to be the only person who can end the curse.

Unlike London's transformation scene, the transformation scenes here are completely computer-generated. The CGI works great with the scenes that involve the wolfman, but there is some spotty CGI work when it comes to composing other animals such as bears and deer.

The Wolfman is an entertaining 108-minute ride that is also a fitting tribute to the original 1941 film with strong performances from Del Toro and Hopkins adding a certain touch of class to this horror film.

The Beacon does not accept any free goods or services in exchange for positive reviews.

RESIDENTIAL ROYALTY



PHOTOS BY LINDA LEE/THE BEACON

TOP: Antonio Hopkins, resident at Bay Vista, asks the audience to mimic his moves in "Simon Says" parody for the talent portion for Mr. and Ms. Housing.
BOTTOM LEFT: Akeiro Lloyd, resident of Lakeview North, and Michelle Noel, resident of University Park Apartments, were crowned Mr. and Ms. Housing 2010.
BOTTOM RIGHT: Aaron Fingal, resident at Lakeview South, plays a self composed song on his guitar for the talent portion. The event was held on Feb. 18 in GC 140 as part of Diversity Week.

Women share their triumphs

WOMEN, page 5

Association-sponsored conferences will be free for students. The lunch session with the leaders will cost \$5. The entire conference will be \$20 for FIU alumni and \$25 for other community members. Registration is required for atten-

dance and can be completed at women.fiu.edu under the Women Who Lead tab.

The Women's Center is available for further questions or information by e-mail at women@fiu.edu, or by calling the MMC center at 305-348-1506, or the BBC center at (305) 919-5359.

Town Hall Meeting Legislative Agenda 2010: The Future of Public Education

FIU Wertheim Performing Arts Center,
Modesto Maidique Campus, 11200 SW 8 Street
February 24, 2010
5 p.m.



PANELISTS
 Alberto M. Carvalho, Superintendent, Miami-Dade County Public Schools
 Rolando Montoya, Provost, Miami Dade College
 Mark B. Rosenberg, President, Florida International University

PROGRAM WILL BE IN SPANISH. ENGLISH INTERPRETATION AVAILABLE
 RSVP: <http://go.fiu.edu/townhall>



Invited: Dade County Legislators, Students, Parents, Community Leaders, Alumni and Friends

JOIN OUR STAFF!



The **BEACON** is always looking for talented and reliable individuals to join the staff. If you have an interest in writing, photography or even grammar, don't be shy. Stop by one of our offices located in GC 210 and WUC 124.

THIS WEEK ON CAMPUS

MONDAY, FEB. 22

HIGHWAY TO SUCCESS ROUTE 66 TOUR



Presented by NSCS. Learn how to maximize your college experience.

WHEN: 6:30 - 8 p.m.
 HOW MUCH: Free
 WHERE: MARC Pavilion Register at route66.cc

THE SPIRITUALITY OF INDIAN MUSIC



Lecture by Peter Lavezzoli, presented by Theta Alpha Kappa.
 WHEN: 6:30 - 9 p.m.
 Reception at 6:15
 HOW MUCH: Free
 WHERE: GC Ballrooms (middle)

YOGARDEN

Come relax with the Yoga Club!
 WHEN: 1 - 6 p.m.
 HOW MUCH: Free
 WHERE: FIU Garden (between Baseball Stadium and nature preserve)

NATIONAL RECREATIONAL SPORTS & FITNESS DAY

Free giveaways, PantherFIT classes.
 WHEN: All day
 HOW MUCH: Free
 WHERE: FIU Rec Center

YOGA IN THE PARK

Bring your own gear, mat, water.
 WHEN: 6 - 7:15 p.m.
 HOW MUCH: Free
 WHERE: Tina Hills Pavilion, Bayfront Park

TUESDAY, FEB. 23

ROCK BAND TOURNAMENT



All proceeds go to Relay for Life; \$1 player pledge.

WHEN: 12:30 p.m.
 HOW MUCH: \$1
 WHERE: GC 155, Porter Davis Game Room

SHADES OF BLACK

MOVIE NIGHT: HIP HOP... BEYOND THE BEATS.
 WHEN: 7 p.m.
 HOW MUCH: Free
 WHERE: CP 145

GARDEN CLUB

General meeting.
 WHEN: 11:30 a.m. - 12:30 p.m.
 HOW MUCH: Free
 WHERE: ECS 157

TUESDAY TIMES ROUNDTABLE

Discuss New York Times articles with fellow students.
 WHEN: 12:30 p.m.
 HOW MUCH: Free
 WHERE: GC 150

NATIONAL PANCAKE DAY



IHop will be giving away a free stack of buttermilk pancakes. Donations will go toward Children Miracle's Network.
 WHEN: 7 a.m. - 10 p.m.
 HOW MUCH: Free
 WHERE: Participating IHops. For more info, go to ihoppancakeday.com

WEDNESDAY, FEB. 24

FREDRICK KAUFMAN



Lecture by distinguished composer and former director of FIU's School of Music.
 WHEN: 6 p.m.
 HOW MUCH: Free
 WHERE: Patricia and Phillip Frost Art Museum

ROSENBERG TOWNHALL MEETING

Event will be in Spanish with English interpretations.
 WHEN: 5 p.m.
 HOW MUCH: Free
 WHERE: Wertheim Performing Arts Center; RSVP at go.fiu.edu/townhall

KARAOKE WITH 'BOOGIE MAN GEORGE'

WHEN: 4 - 8 p.m.
 HOW MUCH: Free
 WHERE: GC 155, Porter Davis Game Room

FIU TAKE-OVER MIAMI HEAT PEP RALLY

WHEN: 12 - 2 p.m.
 HOW MUCH: Free
 WHERE: BBC Wolfe Center

SHADES OF BLACK: FASHION SHOW

WHEN: 7 - 11 p.m.
 HOW MUCH: Free for students, \$10 general
 WHERE: GC Ballrooms

WOMEN'S BASKETBALL

The Golden Panthers take on Middle Tennessee.
 WHEN: 7 p.m.
 HOW MUCH: Free
 WHERE: U.S. Century Bank Arena

9-BALL TOURNAMENT

All proceeds go to Relay for Life.
 WHEN: 12:30 p.m.
 HOW MUCH: \$3 player pledge
 WHERE: GC 155, Porter Davis Game Room

THURSDAY, FEB. 25

COMEDY SHOW



SPC-MMC presents Roy Wood Jr.
 WHEN: 6 p.m.
 HOW MUCH: Free, tickets available in GC 2240
 WHERE: GC Ballrooms

GUY GACHELIN

Guest speaker and FIU alumnus will talk about the truth behind the Haitian earthquake.
 WHEN: 1 - 2 p.m. and 5 - 6 p.m.
 HOW MUCH: Free
 WHERE: GC 150

FILM: MY SON THE FANATIC

WHEN: 7 - 8 p.m.
 HOW MUCH: Free students, members; \$10 general
 WHERE: The Wolfsonian-FIU 1001 Washington Ave.

MEN'S BASKETBALL

The Golden Panthers take on Middle Tennessee.
 WHEN: 8 p.m.
 HOW MUCH: Free
 WHERE: U.S. Century Bank Arena

THE TWO VIRTUOSI CONCERT



Presented by FIU Music.
 WHEN: 7:30 p.m.
 HOW MUCH: \$10 students, \$15 faculty, \$25 general
 WHERE: Concert Hall, WPAC

KATHERINE WHEELER LECTURE

Presented by FIU Architecture.
 WHEN: 5 p.m.
 HOW MUCH: Free
 WHERE: PCA 135

Russell leads Golden Panthers with 18

BASKETBALL, page 8

"The returning guys are really happy to have beaten FIU twice this season," Royster said "Since last season and the season before that they had beaten us in all of the 4 games played."

The Golden Panthers (7-22, 4-12 SBC) couldn't say the same.

Otero had a monstrous double-double with a 15-point, 16-rebound performance, but Golden Panthers leading scorer Marvin Roberts was non-existent nearly the whole game while going a mere 3-of-6 from the field.

Tremayne Russell was the high man for FIU with 18 points, 4 assists, and 2 steals while also playing the second most minutes

and handling the ball during crunch time.

"It was mainly for defensive purposes," Thomas said of Russell's playing time. "Plus he had the hot hand at the end of the game."

The Golden Panthers shot 54 percent from beyond the arc in the impressive first half. FIU knocked down six straight 3-point shots at one point during the period. Stephon Weaver was a perfect 3-of-3 in the first half, while Phil Gary hit two threes to keep the Golden Panthers in the game.

This would soon change.

With the coming of the second half, the Panthers nearly disappeared from long range, shooting a paltry 1-of-4 in the half.

The Owls were able to capitalize on FIU's mistakes by scoring 16 points off

turnovers, including a few easy layups in transition.

With 13 seconds left in the game, the Panthers were down by a single point when Russell applied tremendous defensive pressure to FAU guard Alex Tucker, who lost the ball rolling off his shoe out of bounds.

"It's all about effort," Russell said "Defense or offense, you can ask any coach it's all about making that extra effort."

The Owls had no issue applying effort to their repertoire as well, however, especially on the last play.

"I kind of knew he was getting the ball (Otero)," Royster said "the timeout before that play the team and I had told ourselves that whatever happened, we wouldn't let any of their players score and they didn't."

FAU 77, FIU 74

FIU	FG	FT	REB	A	TO	PTS	MIN
Weaver, Stephon	4-5	0-0	2	2	3	10	32
Otero, J.C.	5-12	4-5	16	1	2	15	35
Roberts, Marvin	3-6	4-7	4	2	3	11	30
Russell, Tremayne	5-8	7-9	2	4	3	18	34
Taylor, Nick	0-1	0-0	2	1	1	0	18
Gary, Phil	3-7	1-2	1	0	2	9	10
Kee, Martavis	2-3	0-0	0	2	0	5	15
Bright, Marlon	2-4	0-0	1	1	0	4	13

Team Totals 25-47 16-23 30 14 15 74

FAU	FG	FT	REB	A	TO	PTS	MIN
Royster, Brett	5-7	0-0	14	0	0	10	37
Hougley, Sanch	8-13	2-4	2	0	0	19	30
Tucker, Alex	3-4	0-0	4	9	2	6	24
Gantt, Greg	6-17	2-4	2	0	2	16	37
Taylor, Ray	5-9	4-6	2	6	3	17	38
Richardson, Sha	2-5	0-0	1	1	3	5	19
McCoy, Jordan	2-3	0-0	2	0	0	4	13
Davis, Justin	0-0	0-0	0	0	0	0	2

Team Totals 31-58 8-14 29 16 10 77 200

Berkowitz delivers in relief, Henry shines in debut

BASEBALL, page 8

driving in two runs.

"We had to calm down," said Bermudez. "We were really anxious, we were hyped up. It took us five innings to find ourselves."

After a pitching change, Mike Martinez followed with a double down the third base line to even up the score at three apiece.

"I told Tim [Jobe] before I went up there that [Harmon] was going to challenge me so I'm going to swing at that first pitch no matter where it is," said Martinez. "Sure enough it was right there and I yanked it down the line."

FIU would add one more run in the sixth to give the Golden Panthers a 4-3 lead and

would add six more before the night was through. The bullpen shut the Maryland offense down when Eric Berkowitz took over in relief for Rembisz in the sixth and pitched three shutout innings, opening the door for freshman Alberto Cardenas to put the game away with a scoreless ninth inning.

FIU 11, MARYLAND 2

The Golden Panthers picked up where they left off with more offensive power and a cluster of great defensive plays, cruising past Maryland in convincing fashion in the second game of the weekend series on Feb. 20.

Jabari Henry made a good first impression on defense, throwing out a Terrapin

base runner to end the top of the second and keeping Maryland off the scoreboard.

Henry then proceeded to impress the FIU faithful in the bottom of the second, sending a pitch soaring deep into left field that found its way past the scoreboard and into the FIU soccer field for a three-run homerun in his first collegiate at bat.

"I was thinking last night 'What if I hit a homerun?' and I actually did," said a smiling Jabari Henry. "I was just trying to hit the ball hard anywhere. He put one right there and I drove it."

Corey Polizzano (1-0) took the mound for the FIU, letting up one run on seven hits in six innings of work. Polizzano ran into trouble in the top half of the third, letting up

a run after giving up two singles and committing a throwing error while fielding a bunt to first. But an unassisted double play by Junior Arrojo and a diving catch and throw by third baseman Garrett Wittels bailed the senior southpaw out of a jam.

"That was big because they could have had a big inning," Polizzano said.

Tim Jobe made Maryland starter Eric Potter pay the price for leaving an off-speed pitch hanging, sending a line drive shot over the left field wall for a two-run homerun in the bottom of the third.

The rest of the game was smooth sailing for FIU as they tacked on a few more runs and rode on solid pitching from the bullpen to win their second straight game.



You name it. It's All Included!

Discovery Cruise Line All-Inclusive to Grand Bahama

- All-Inclusive ship with all alcoholic and non-alcoholic drinks included
- New 10 AM departure (gates close at 8:45 AM)
- New all-you-can-eat brunch buffet served until Noon
- New all-you-can-eat dinner buffet served from 6 PM - 9 PM
- Music and V-Jay
- Movies
- New Wii® Room with all sorts of games to play
- Exciting action in the casino
- A Grand Destination with plenty to do for overnight visitors: beautiful beaches, lots of attractions, Port Lucaya Marketplace, diving, golf, fishing, spa, shops, art & exciting nightlife, casino and more...beautiful resorts.

from only **\$49.99*** per person
for an all-inclusive fun day cruise

from only **\$69.99*** per person
for a 2 day / 1 night stay

all-inclusive all the way

1-888-372-2784 or your Travel Agent
DiscoveryCruiseLine.com

Discovery for the Day...

Discovery Cruise & Stay



Choose from a variety of Resorts, from budget to luxury to all-inclusive. Book now and when you sail receive a FREE Discovery Deals Booklet containing coupons for discounts at Grand Bahama merchants having a total value of more than \$200.

*Price includes the cruise, U.S. port taxes, 2 all-you-can-eat buffet meals on board, and all-you-can-drink alcoholic (house brands) and non-alcoholic beverages on board. Does not include port parking fees or a \$35 per person surcharge including the Bahamian departure & harbor fees, security and CBP user fees, and ticket transaction fee. One free conventional suitcase per adult passenger. Passengers should be committed to responsible drinking and this is the passenger's sole responsibility. Discovery will not serve alcoholic beverages to passengers under the age of 21 while the ship is in Florida waters and Discovery will not serve such beverages to passengers under the age of 18 outside Florida waters. Although Discovery does not control or manage private or public transportation at any port of call, it understands that a sufficient number of taxi cabs or other means of public transportation may be available dockside upon arrival for passengers who choose not to operate their own vehicles upon debarkation. It is the passenger's responsibility to act with due diligence when deciding whether to operate a motor vehicle after consuming alcoholic beverages. Facilities & services are subject to change without notice. Advance reservations & payment required. Prices may be higher on weekends & holidays. Discovery, its employees or agents, cannot be held responsible for the accuracy and for errors or omissions in the content of this promotion. Certain restrictions apply. Offer expires June 30, 2010. Ship's registry Bahamas. FL Seller of Travel reference No. ST36121.

BASEBALL: FIU 10, MARYLAND 3; FIU 11, MARYLAND 2

MOWING MARYLAND

Team scoring binge fuels wins

JOEL DELGADO
Asst. Sports Director

FIU guaranteed themselves a series victory over Maryland with a pair of wins to open up the season.

FIU 10, MARYLAND 3

Declining temperatures and a nonproductive offense kept the fans gathered at University Park Stadium quiet for most of the first five innings of play Friday night.

But offensive outbursts in the latter half of the season opener brought the crowd to life as the Golden Panthers rolled to a 10-3 victory over visiting Maryland on Feb. 19.

FIU (1-0) starting pitcher Scott Rembisz (1-0) had a shaky start but settled down and earned his first win of the season, pitching five innings and allowing three runs while picking up five

strikeouts.

The Golden Panthers dug themselves into an early hole as Rembisz gave up three runs in a tumultuous second inning. Rembisz settled down and managed to hold the Terrapin offense at bay. But Maryland starter Brett Harmon continued to silence FIU hitters.

"He was throwing real good," FIU head coach Turtle Thomas said of Harmon's performance in the early innings. "We didn't really do what we think we were capable of doing, which is hitting that ball the other way and we didn't really adjust early on."

The Panther offense came to life in the bottom of the fifth when Pablo Bermudez, who got injured in last season's opening game, slapped a single to right field with the bases loaded,

BASEBALL, page 7



PHOTOS BY VICTORIA LYNCH/THE BEACON

ABOVE: FIU centerfielder Pablo Bermudez gets a hit against Maryland on Friday. **RIGHT:** Left fielder Jabari Henry celebrates a home run in his first career at bat Saturday.



MEN'S BASKETBALL: FAU 77, FIU 74

Golden Panthers fall to season sweep of Owls

JOEY CRUZ
Staff Writer

With 14.5 seconds left in the game, FAU (14-12, 10-5 Sun Belt) center Brett Royster was already in the midst of one of the best perfor-

mances of his career.

Royster wasn't done however, as he cemented a 77-74 FAU win and a season sweep against FIU by blocking J.C. Otero on the final possession to seal the victory on Feb. 18.

"It was a great Block," FIU head coach Isiah Thomas said. "J.C. was aggressive taking the ball to the basket and just got blocked, that's basketball."

The South Florida rivalry included good shooting percentages from both teams, as the two shot 50 percent from the floor in a close game, but it was Royster's block that made the difference late.

"We could do 9 out of 10 things right, but the tenth wrong thing ends up causing us a basket in transition," Thomas said.

The FAU center had a whopping 10 points, 14 rebounds and 4 blocks throughout the game. The Owls also used contributions from Sanchez Hughley, who had 19 points in the contest, and Ray Taylor, who scored 17 points and notched 6 assists in the game.



RODRIGO ZAMITH/THE BEACON

FIU guard Temayne Russell drives to the hoop in the second half against Florida Atlantic. Russell led the team with 18 points.

BASKETBALL, page 7

SOFTBALL

Welch walk off heroics highlight early win streak

STEPHANIE GABRIEL
Asst. Sports Director

Like soldiers, the FIU softball team dominated Armed Forces Appreciation Day and the Blue and Gold Felsberg Memorial Tournament with four consecutive wins this weekend.

FIU 2, LIU 0

Kasey Barrett led the frontline to a 2-0 victory over the Long Island Blackbirds on Feb. 19.

The senior pitcher threw a complete game shutout that included seven strikeouts.

Catcher Jenny Welch and shortstop Kayla Burri also held down the defense with seven and five putouts, respectively.

The two runs were scored in the bottom of the first inning by freshman Jessy Alfonso and Welch.

FIU 15, BCU 1

The FIU offense exploded with 21 hits against Bethune Cookman while senior Paige Cassidy held down the defense with a complete game that included five strikeouts on Feb. 19.

Alfonso led the Panther attack going 4-for-5 at the plate with three RBI.

FIU went on to score five runs in the fourth inning and seven in the seventh.

For Cassidy, it was her first win this season while the Wildcat's losing pitcher, Chastity Sanders, suffered her third loss.

FIU 2, LIU 1

On day two of the tournament, the Panthers left the Blackbirds flightless again on Feb. 20.

Sophomore Jennifer Gniadek (3-0) threw a complete game for FIU.

Although she gave up four walks, the hurler allowed just three hits and struck out nine.

"As the game went on she got a lot better," McClendon said.

FIU's pair of runs was plated in the top of the first inning. Kayla Burri drew a walk and then advanced to second on a wild pitch. Alfonso then singled and a throwing error allowed Burri to score.

Ashley McClain and freshman Brie Rojas both recorded singles later in the inning to bring home Alfonso and give FIU a 2-0 advantage.

FIU 3, BCU 2

Tied at two in the bottom of the seventh inning, the Wildcats could have pitched to Rojas.

Instead, they intentionally walked the freshman to pitch to Welch, who is FIU's most clutch hitter, according to McClendon.

In the end, Bethune-Cookman watched the Panthers rejoice to a walk-off win.