



Introduction to Denise Duhamel 1:15 min. Interview: Raymond Elman. Post-Production: Sidney Peralta. Music: Nathan Moore, **Recorded via Zoom**: 8/30/2022, Miami.

Denise Duhamel

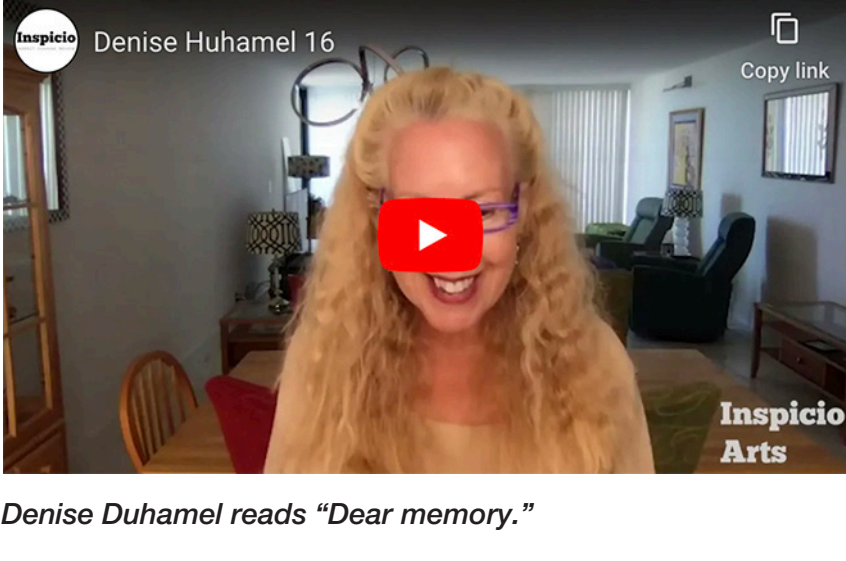
Poet, Educator

By Elman + Peralta

Poet **DENISE DUHAMEL** earned her MFA at Sarah Lawrence College. Her most recent books of poetry are *Second Story*; *Scald*; and *Blowout*, which was a finalist for the National Book Critics Circle Award. Her other titles include *Ka-Ching!*; *Two and Two*; *Queen for a Day*; *Selected and New Poems*; *The Star-Spangled Banner*; and *Kinky*. She and Maureen Seaton have co-authored four poetry collections, the most recent of which is *CAPRICE* (Collaborations: *Collected*, *Uncollected*, and *New*). Her collaboration with FIU Professor Julie Marie Wade, *The Unrhymables: Collaborations in Prose*, was published by Noctuary Press in 2019. She is a recipient of fellowships from the Guggenheim Foundation and the National Endowment for the Arts.

The videos below were **recorded via Zoom**, are organized by Success Factor, and run between 30 seconds and 4 minutes. Click on any video. You must be connected to the Internet to view the videos.

“Dear memory”: 2:44 min.



Denise Duhamel reads “Dear memory.”

DEVELOP A VOICE: 1:42 min.



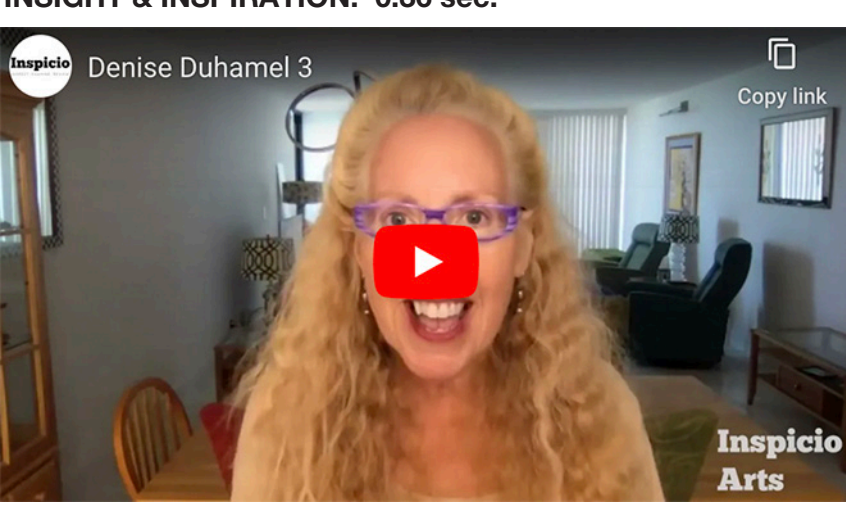
Where did you grow up and what was your first awareness of art of any discipline?

CRITICAL THINKING: 0:38 sec.



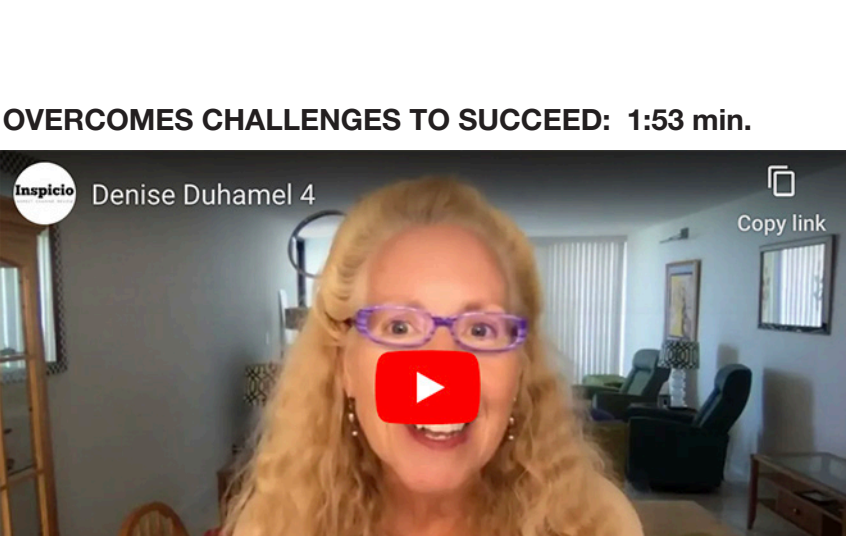
Do you still have an accordion?

INSIGHT & INSPIRATION: 0:36 sec.



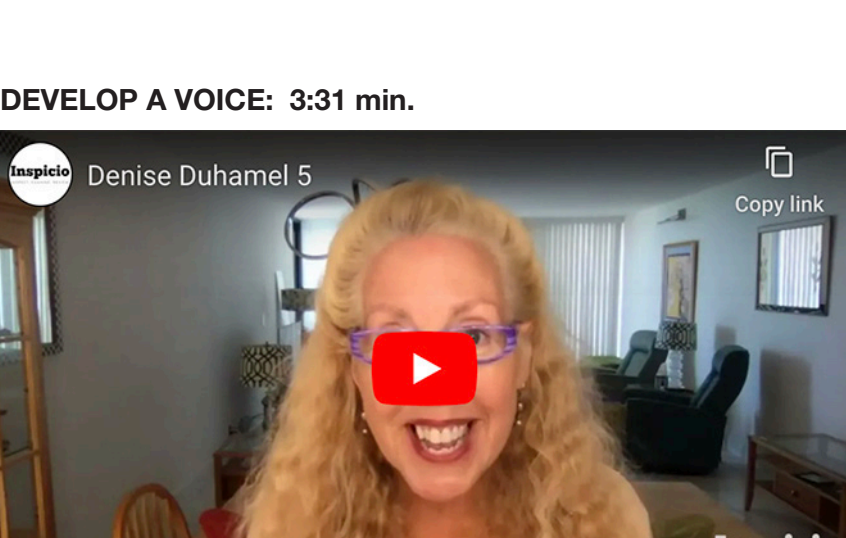
Have you written much about Woonsocket, Rhode Island?

OVERCOMES CHALLENGES TO SUCCEED: 1:53 min.



When did you start embracing reading, and when did writing become a passion for you?

DEVELOP A VOICE: 3:31 min.



Where did you go to school and what did you learn that still informs you today?

OVERCOMES CHALLENGES TO SUCCEED: 2:19 min.



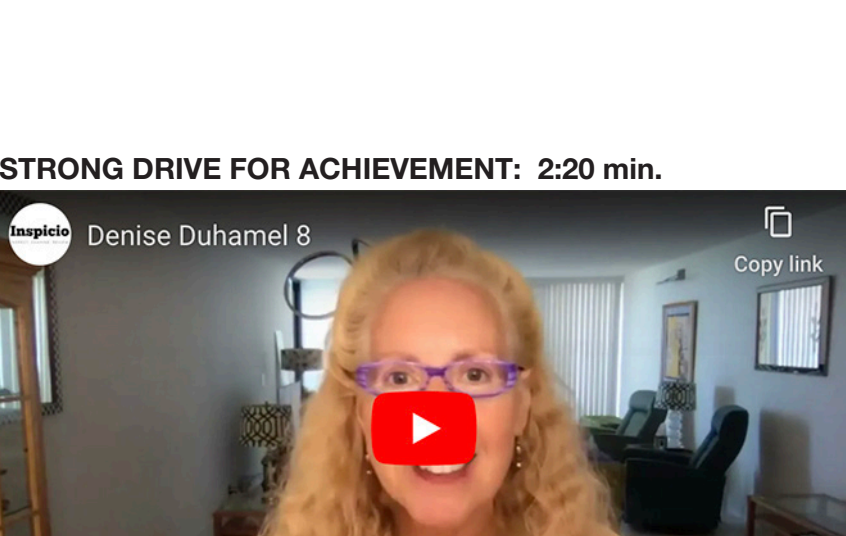
Do Woonsocket people have a strong accent like New Bedford people?

OVERCOMES CHALLENGES TO SUCCEED: 0:58 sec.



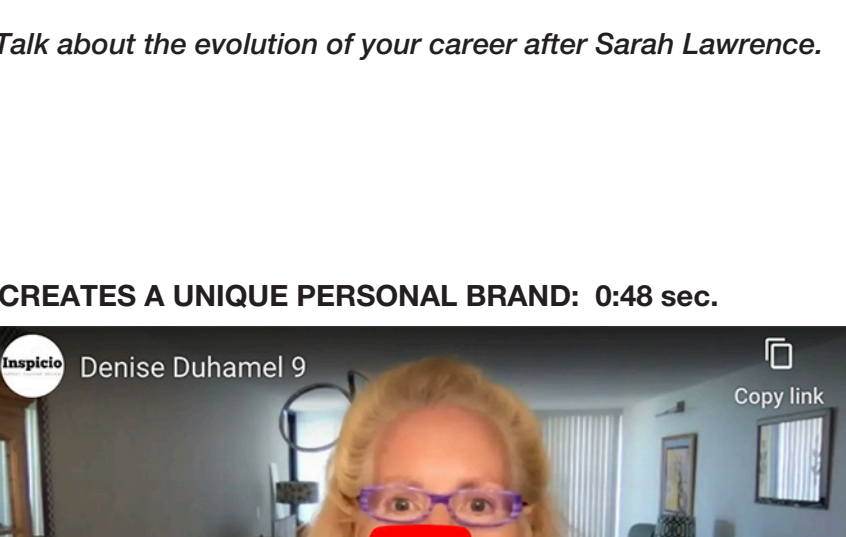
What was your experience at Sarah Lawrence College?

STRONG DRIVE FOR ACHIEVEMENT: 2:20 min.



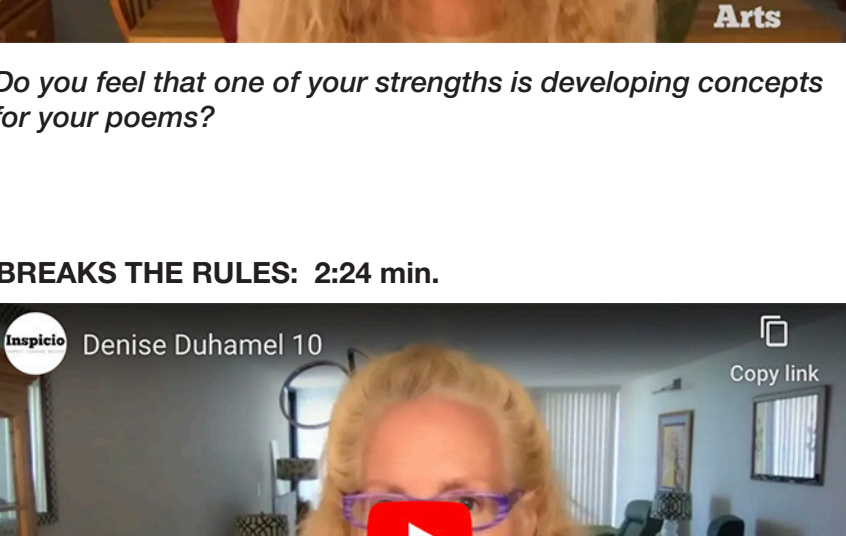
Talk about the evolution of your career after Sarah Lawrence.

CREATES A UNIQUE PERSONAL BRAND: 0:48 sec.



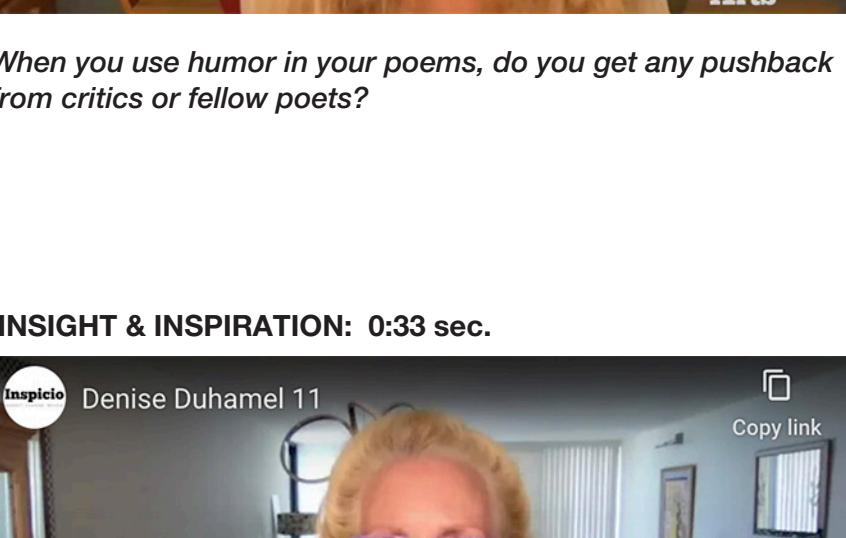
Do you feel that one of your strengths is developing concepts for your poems?

BREAKS THE RULES: 2:24 min.



When you use humor in your poems, do you get any pushback from critics or fellow poets?

INSIGHT & INSPIRATION: 0:33 sec.



How is the timing of comedy similar to the timing in poetry?

EXPOSURE TO BROAD INFLUENCES: 1:20 min.



Who are your role models and influencers?

CRITICAL THINKING: 1:01 min.



What are you working on now?

UNDERSTANDS ARTISTS' NEEDS: 2:08 min.



What's your assessment of Miami's writing community, and how can it grow and become even more fruitful?

"Two more purses": 1:19 min.



Denise Duhamel reads "Two more purses."