

2012

Controls on Ecosystem Carbon Dioxide Exchange in Short- and Long-Hydroperiod Florida Everglades Freshwater Marshes

Jessica L. Schedlbauer

Department of Biological Sciences, Florida International University and Department of Biology, West Chester University

Jay W. Munyon

Department of Biological Sciences, Florida International University

Steven F. Oberbauer

Department of Biological Sciences, Florida International University and Fairchild Tropical Botanic Garden

Evelyn E. Gaiser

Department of Biological Sciences, Florida International University, gaisere@fiu.edu

Gregory Starr

Department of Biological Sciences, University of Alabama

Follow this and additional works at: https://digitalcommons.fiu.edu/fce_lter_journal_articles



Part of the [Ecology and Evolutionary Biology Commons](#), and the [Environmental Sciences Commons](#)

Recommended Citation

Publisher version: Schedlbauer, J., J. Munyon, S. Oberbauer, E.E. Gaiser, G. Starr. 2012. Controls on ecosystem carbon dioxide exchange in short- and long-hydroperiod Florida Everglades freshwater marshes. *Wetlands* 32: 801-812.

This material is based upon work supported by the National Science Foundation through the Florida Coastal Everglades Long-Term Ecological Research program under Cooperative Agreements #DBI-0620409 and #DEB-9910514. Any opinions, findings, conclusions, or recommendations expressed in the material are those of the author(s) and do not necessarily reflect the views of the National Science Foundation.

This work is brought to you for free and open access by the FCE LTER at FIU Digital Commons. It has been accepted for inclusion in FCE LTER Journal Articles by an authorized administrator of FIU Digital Commons. For more information, please contact dcc@fiu.edu, jkrefft@fiu.edu.

1
2
3
4
5
6
7
8
9
10
11
12
13
14
15
16
17
18
19

Controls on ecosystem carbon dioxide exchange in short- and long-hydroperiod

Florida Everglades freshwater marshes

Jessica L. Schedlbauer^{1,2}, Jay W. Munyon¹, Steven F. Oberbauer^{1,3},

Evelyn E. Gaiser¹, Gregory Starr⁴

¹Department of Biological Sciences 11200 SW 8th St., Florida International University,
Miami, FL 33199, USA

²Present address: Department of Biology, 750 S. Church St., West Chester University, West
Chester, PA 19383, USA

³Fairchild Tropical Botanic Garden, 10901 Old Cutler Rd., Coral Gables, FL 33156, USA

⁴Department of Biological Sciences, University of Alabama, Tuscaloosa, AL 35487, USA

Corresponding author: Jessica L. Schedlbauer, Department of Biology, 750 S. Church St.,
West Chester University, West Chester, PA 19383, USA, Phone: 610-436-3175, Fax: 610-
436-2183, Email: jschedlbauer@wcupa.edu

1 **Abstract**

2 Although freshwater wetlands are among the most productive ecosystems on Earth, little is
3 known of carbon dioxide (CO₂) exchange in low latitude wetlands. The Everglades is an
4 extensive, oligotrophic wetland in south Florida characterized by short- and long-
5 hydroperiod marshes. Chamber-based CO₂ exchange measurements were made to
6 compare the marshes and examine the roles of primary producers, seasonality, and
7 environmental drivers in determining exchange rates. Low rates of CO₂ exchange were
8 observed in both marshes with net ecosystem production reaching maxima of 3.77 and
9 4.28 μmol CO₂ m⁻² s⁻¹ in short- and long-hydroperiod marshes, respectively. Fluxes of CO₂
10 were affected by seasonality only in the short-hydroperiod marsh, where flux rates were
11 significantly lower in the wet season than in the dry season. Emergent macrophytes
12 dominated fluxes at both sites, though this was not the case for the short-hydroperiod
13 marsh in the wet season. Water depth, a factor partly under human control, significantly
14 affected gross ecosystem production at the short-hydroperiod marsh. As Everglades
15 ecosystem restoration proceeds, leading to deeper water and longer hydroperiods,
16 productivity in short-hydroperiod marshes will likely be more negatively affected than in
17 long-hydroperiod marshes. The Everglades stand in contrast to many freshwater wetlands
18 because of ecosystem-wide low productivity rates.

19

20 **Keywords:** carbon dioxide exchange; Everglades; productivity; water management;
21 wetland

1 **Introduction**

2 Freshwater wetlands are unique ecosystems that provide important ecosystem services
3 including regulation of biogeochemical cycling, provision of habitat for distinctive species,
4 and flood control (Gopal et al. 2000; Zedler and Kercher 2005; Keddy et al. 2009). Globally,
5 wetlands are threatened by human activities such as residential and urban development, as
6 well as agricultural expansion (Dugan 1993; Dahl 2011). In the conterminous United
7 States, approximately half of all wetlands were lost by the 1970s (Mitsch and Gosselink
8 2007). As increased attention has focused on wetland conservation and research in recent
9 decades, carbon cycling and storage have emerged as areas of particular interest. Wetlands
10 are among the most productive ecosystems in the world, responsible for approximately
11 6.3% of terrestrial net primary production (Houghton and Skole 1990; Neue et al. 1997;
12 Keddy 2000).

13 Most knowledge of wetland carbon dioxide (CO₂) exchange in non-agricultural,
14 freshwater systems is focused on mid- and high-latitude regions of the world (e.g. Bubier et
15 al. 1998; Hirota et al. 2006; Roulet et al. 2007; Rocha and Goulden 2008; Dusek et al. 2009).
16 Research over the course of the past decade has begun to explore CO₂ exchange in the
17 tropics and sub-tropics (e.g. Morison et al. 2000; Jones and Humphries 2002; Jauhiainen et
18 al. 2005; Schedlbauer et al. 2010; Wright et al. 2011), but our knowledge of exchange rates
19 and their controls remains limited. There is much to be learned about carbon dynamics in
20 low latitude wetlands with year-round growing seasons and seasonality defined by wet and
21 dry periods.

22 The Everglades is a large (>6,000 km²) subtropical wetland located in south Florida
23 (Davis et al. 1994). The Everglades landscape has been subject to hydrologic management

1 for more than a century, and water flows are regulated by canals, levees, and flow control
2 structures (USACE and SFWMD 1999). As a result of anthropogenic alterations, the
3 Everglades now occupies half of its former spatial extent (Light and Dineen 1994). In
4 addition, hydrologic modification has reduced water levels and hydroperiods (i.e., the
5 duration of inundation) relative to historical levels (Light and Dineen 1994). Current
6 construction proceeding under the Comprehensive Everglades Restoration Plan (CERP) is
7 intended, in part, to reverse these patterns. It is likely that plant community composition
8 and productivity will change in response to these alterations in the timing and quantity of
9 water delivery (Armentano et al. 2006; Childers et al. 2006a).

10 Short- and long-hydroperiod marshes are the two principal freshwater wetlands found
11 in the Everglades, and both are oligotrophic (Noe et al. 2001; Lodge 2005; Childers et al.
12 2006b). Short-hydroperiod marshes experience annual dry periods during which the
13 water table falls below the soil surface, while long-hydroperiod marshes are typically
14 inundated year-round. As such, the soils and communities of primary producers in these
15 marshes are quite different. Short-hydroperiod marshes are characterized by marl
16 (calcium carbonate) soils, and the plant community is dominated by a relatively uniform
17 grass-sedge canopy (Davis et al. 2005). In contrast, long-hydroperiod marshes have peat
18 soils and topography typified by sparsely vegetated sloughs and densely vegetated ridges
19 (Ogden 2005). Both types of marshes contain an additional group of primary producers,
20 periphyton, though biomass is much higher in short-hydroperiod marshes than in long-
21 hydroperiod marshes (Gottlieb et al. 2006).

22 Despite ecosystem oligotrophy, high rates of ecosystem productivity have been
23 reported in both short- and long-hydroperiod Everglades freshwater marshes (Ewe et al.

1 2006). However, prior studies have not directly compared rates of CO₂ exchange between
2 these contrasting ecosystems, nor have they evaluated the roles of primary producers and
3 climatic factors in driving rates of CO₂ exchange. It is essential to understand these factors,
4 particularly in light of Everglades ecosystem restoration activities currently underway.
5 Three principal research questions were addressed in the present study: (1) How are net
6 ecosystem production (NEP), ecosystem respiration (ER), and gross ecosystem production
7 (GEP) affected by both seasonality and the experimental removal of a primary producer
8 group (i.e., macrophytes or periphyton) in short- and long-hydroperiod marshes? (2) How
9 do ecosystem CO₂ exchange rates vary between short- and long-hydroperiod marshes? (3)
10 What environmental factors are the key drivers of NEP, ER, and GEP, and do these factors
11 vary between short- and long-hydroperiod marshes?

12

13 **Methods**

14 *Study Sites*

15 This research was conducted at two study sites (Fig. 1), a short-hydroperiod marsh
16 located within Taylor Slough at 25°26'16.50"N 80°35'40.68"W (a site hereafter referred to
17 as TS) and a long-hydroperiod marsh located within Shark River Slough at 25°33'6.72"N
18 80°46'57.36"W (a site hereafter referred to as SRS). Taylor and Shark River Sloughs are
19 the two major drainages of Everglades National Park, and the research described in the
20 present study was conducted prior to the initiation of any CERP-related restoration
21 activities. Mean annual temperature is 23.9°C and average rainfall is 143 cm per year
22 (NCDC 2009). Climate in south Florida is best characterized by wet and dry seasons (Beck
23 et al. 2006; Kottek et al. 2006) with the majority of the annual precipitation falling between

1 May and October. Wet season precipitation is delivered via convectively formed clouds or
2 during the passage of tropical storms and hurricanes (Duever et al. 1994). Dry season
3 precipitation typically coincides with the passage of cold fronts over the Florida peninsula.

4 The TS site is a seasonally inundated freshwater marsh with a typical hydroperiod of
5 ~5 months per year (Schedlbauer et al. 2010). This site is characterized by shallow (0.14
6 m), marl soils, and the vegetation is dominated by sawgrass (*Cladium jamaicense*) and
7 muhly grass (*Muhlenbergia capillaris*). Vegetation is short-statured, reaching only 0.73 m
8 above the soil surface. There is no seasonal variation in leaf area index ($1.8 \text{ m}^2 \text{ m}^{-2}$), or in
9 the aboveground biomass of one of the co-dominant plant species, *C. jamaicense*
10 (Schedlbauer et al. 2010). Periphyton is present at the site, and mats of periphyton begin
11 to grow substantially ~2 months into the wet season, forming dense “sweaters” around
12 submerged vegetation. When the site is dry, the periphyton exists as a desiccated mat,
13 often suspended in strands between individual plants and sometimes covering the soil
14 surface. Together, periphyton and submerged macrophytes contribute to the geochemical
15 fixation of CO_2 as calcium carbonate during periods when the site is inundated. Seasonality
16 at TS is best defined by whether or not the site is inundated rather than climatic seasonality
17 because the two do not always coincide (Schedlbauer et al. 2010).

18 The SRS site is also a freshwater marsh, but is usually inundated year-round and is
19 characterized by ridge and slough topography (Ogden 2005). Soils are composed of peat
20 deposits that are 0.73 m deep within ridges and 0.66 m deep within sloughs. The
21 vegetation at SRS is different from that found at TS. *C. jamaicense* is dominant in ridge
22 areas, and a mixture of emergent spikerush (*Eleocharis* sp.), emergent panic grass
23 (*Panicum* sp.), and submerged bladderwort (*Utricularia* sp.) species dominate the sloughs.

1 Vegetation height on ridges averages 1.34 m above the soil surface, while slough vegetation
2 is approximately 0.70 m above the soil. Periphyton is also present at SRS, floating at or
3 beneath the water surface, often in association with submerged vegetation. Seasonality at
4 this long-hydroperiod marsh is best defined by south Florida's climatic seasonality because
5 the site is typically inundated year-round. As such, there are slight mismatches in
6 seasonality between TS and SRS (Fig. 2A).

7 The TS and SRS sites are the locations of eddy covariance towers that are part of the
8 AmeriFlux network. At the towers, measurements of air temperature (T_{air}), relative
9 humidity (HMP45C, Vaisala, Helsinki, Finland), and photosynthetically active radiation
10 (PAR, PAR Lite, Kipp and Zonen, Delft, Netherlands) were made every 15 s and averaged at
11 30 min intervals. Measurements were logged using both CR1000 and CR10X data loggers
12 (Campbell Scientific, Logan, UT). Measurements of water depth were made at both sites
13 with water level recorders installed in PVC wells (HOBO U20-001-01).

14 *Field Measurements*

15 Monthly chamber measurements of ecosystem CO_2 exchange were made at both sites
16 for a period of approximately one year. Measurements of NEP and ER were made with
17 custom-made polycarbonate chambers. The chamber used at TS was 0.208 m^3 ($50.8 \text{ cm} \times$
18 $50.8 \text{ cm} \times 80.6 \text{ cm}$), while that used at SRS was 0.310 m^3 ($50.8 \text{ cm} \times 50.8 \text{ cm} \times 120.0 \text{ cm}$).
19 Chamber height varied to accommodate differences in vegetation height at the two sites.
20 Each chamber was fitted with a 4+ m vent tube, a capped vent to aid in pressure
21 equilibration while seating the chamber, and an aluminum angle bar base covered with
22 closed-cell foam. Two box fans were affixed to the inside top of each chamber and were

1 run constantly during measurement periods to ensure that air within the chambers was
2 well mixed. Chambers were configured for non-steady state, flow-through measurements.

3 During measurement periods, the chamber was coupled to a custom-made system to
4 measure chamber CO₂ concentration. This system included a LI-840 CO₂/H₂O infrared gas
5 analyzer (LI-COR, Inc., Lincoln, NE) coupled to a CR10X datalogger (Campbell Scientific,
6 Logan, UT) that recorded CO₂ concentration every second. Air was drawn into the LI-840
7 with a pump (UNMP 105B, KNF Neuberger, Trenton, NJ) located downstream from the
8 analyzer. The flow rate was maintained at slightly <1 liter per minute with a rotameter
9 (VFA-22-SSV, Dwyer Instruments, Inc.) located upstream from the LI-840. Air was
10 circulated between the chamber and LI-840 through tubing (Bev-A-Line IV, Thermoplastic
11 Processes, Stirling, NJ). Measurements of PAR (LI-210, LI-COR, Inc., Lincoln, NE) were also
12 recorded by the datalogger at 1 s intervals during measurement periods.

13 When measurements were made, the chamber was placed over the measurement
14 location and checked to ensure that there was a leak-free seal at the base of the chamber.
15 After a 1 min equilibration period, a 1 min measurement period commenced.
16 Measurements of NEP were made under full-sun conditions and ER was measured with a
17 black nylon cloth placed over the chamber. Chamber measurements were typically made
18 between 10 AM and 1 PM. The chamber was always vented between measurements to
19 ensure that CO₂ concentration, T_{air}, and humidity remained as close to ambient conditions
20 as possible. When water was present at the study sites, water depth was measured at each
21 measurement location so that chamber volume could be adjusted accordingly.

22 The chamber measurement technique and experimental design varied between study
23 sites. In particular, different manipulative treatments were applied at each site to evaluate

1 the roles of primary producers (i.e., macrophytes and periphyton) in determining CO₂
2 exchange rates. At TS, a periphyton removal treatment was carried out in the dry season.
3 This treatment did not substantially disturb macrophytes and facilitated repeated
4 measurements over time (see below). However, at SRS the site was continually inundated
5 during measurement periods, and it was not possible to remove submerged periphyton
6 growing in close association with macrophytes. As a result, an above-water macrophyte
7 removal treatment was applied to plots that were first measured in an undisturbed state
8 (see below).

9 At TS, ten polyethylene bases (50.8 cm × 50.8 cm × 15.2 cm) were constructed and
10 seated in marl soil at the outset of the experiment. Bases were inserted an average of 3.8
11 cm into the soil and were allowed to settle for at least two weeks prior to the start of the
12 experiment. Five bases served as controls and were not manipulated in any way. Five
13 additional bases were the treatment bases, subjected to the periphyton removal treatment.
14 During the dry season, periphyton was carefully removed from plants and the soil surface
15 by hand. Periphyton was removed only to the extent that it did not disturb the soil surface
16 or vegetation within each base. As such, a small amount of periphyton remained within
17 each of the treatment bases. No attempt was made to remove periphyton from within the
18 bases during periods of inundation or immediately after the water level dropped below the
19 soil surface. Periphyton grew in such close association with the vegetation and soil that
20 removal would have led to a high degree of disturbance.

21 During measurements at SRS, the site was constantly inundated with water, often
22 reaching 40+ cm above the soil surface (Fig. 2A). As a result, no bases were seated in the
23 soil. Instead, a float was constructed from a piece of foamboard and the chamber was

1 placed over a 50.8 cm × 50.8 cm hole in the board. This allowed the chamber to float above
2 the area of marsh that was to be measured. Chamber measurement plots were randomly
3 selected on each visit to the site and control (i.e., unmanipulated) measurements of NEP
4 and ER were made at each plot. Subsequent to these measurements, all emergent
5 macrophytes within the plot were clipped just beneath the water surface so that NEP and
6 ER could then be measured in treated plots. Clipped macrophytes were returned to the lab,
7 dried at 70°C for 48 hours, and weighed.

8 Chamber measurements were made regularly at TS over the period from April 2008
9 through August 2009. Measurements at SRS began later and occurred on fewer dates
10 because of limited site access during periods with low water levels. The SRS site is remote
11 and chamber measurements could be made only when the site was accessible by airboat.

12 *Data Processing and Statistical Analyses*

13 Measurements of CO₂ concentration within the chamber during a measurement period
14 were plotted as a function of time, and linear regression was used to determine the rate of
15 change in CO₂ concentration over each 1 min measurement period (i.e., the slope of the
16 relationship). These data were then used to determine CO₂ flux rates in μmol m⁻² s⁻¹ as,

$$17 \text{CO}_2 \text{ flux} = (dC/dt) \times ((p_a V)/(T R A))$$

18 where dC/dt is the slope described above, p_a is atmospheric pressure (Pa), V is chamber
19 volume (m³), T is temperature (K), R is the gas constant (8.3143 J mol⁻¹ K⁻¹), and A is
20 chamber area (m²). Chamber volume was allowed to vary with water level at each
21 measurement location.

22 Individual measurements of NEP and ER at each base or plot location were used to
23 determine gross ecosystem production (GEP) as,

1 $GEP = NEP - ER$

2 where positive values indicate CO₂ uptake by the ecosystem and negative values indicate
3 CO₂ release from the ecosystem.

4 The statistical analyses described below were performed with R (version 2.13.0, The R
5 Foundation for Statistical Computing, 2011). The effects of the experimental treatments
6 and seasonality on NEP, ER, and GEP at both sites were examined with linear mixed-effects
7 models (Schabenberger and Pierce 2002). The fixed effects at both sites were treatment
8 (at TS: periphyton removal and control, at SRS: macrophyte removal and control), season
9 (wet and dry), and the treatment by season interaction term. The random effect at both
10 sites was measurement location (at TS: base location, at SRS: measurement plot). At TS,
11 periphyton removal treatment measurements were eliminated from the dataset for all
12 dates more than two months into the wet season. As described above, it was not possible
13 to remove periphyton from within the bases after this time. Therefore, the analysis of the
14 experimental treatment at TS was only for the mid to late dry season and early wet season.
15 The mixed-effects statistical design accommodated an unbalanced study design. In
16 addition to the late-wet season and early dry season data that were eliminated at TS, the
17 weather occasionally made it impossible to complete a full set of chamber measurements.

18 Analysis of variance (ANOVA) was used to examine whether NEP, ER, and GEP varied
19 between the short- and long-hydroperiod marshes. Specifically, dry and wet season data
20 from the control treatments at TS were compared with seasonally-pooled control
21 treatment data from SRS. Data were analyzed in this manner because of the findings from
22 the mixed effects model analysis, as discussed below. To meet the ANOVA assumptions of
23 normality and equal variances, it was necessary to apply a square root transformation to

1 the GEP data in the TS wet season vs. SRS comparison and to remove three outliers
2 (residuals >2 standard deviations from the mean) from the ER TS dry season vs. SRS
3 comparison.

4 Multiple linear regressions were used to determine the effect of various environmental
5 factors on rates of CO₂ exchange at each study site. Regressions were performed on control
6 treatment NEP, ER, and GEP values expressed as means for each measurement date.
7 Forward and backward stepwise multiple regressions were performed using the Akaike
8 Information Criterion (AIC) to select predictor variables for the final models (R Package
9 MASS, stepAIC function). Full models for NEP and GEP included water depth relative to the
10 soil surface, T_{air}, vapor pressure deficit (D, as the vapor pressure difference between
11 saturated and ambient air at T_{air}), and PAR as predictor variables. In the ER analysis, PAR
12 was not used as a predictor variable because measurements were made in the dark.
13 Potential predictor variables such as soil temperature, water temperature, and soil
14 volumetric water content were excluded from the analysis because of multicollinearity
15 with the selected variables. Most environmental data used in the models were drawn from
16 the half-hourly micrometeorological dataset and were averaged across the time period
17 during which chamber measurements were made (i.e., from 10 AM to 1 PM). The one
18 exception was the PAR data, which was calculated as a mean of the PAR measurements
19 made during each 1 min chamber measurement period.

20

21 **Results**

22 *Micrometeorological site comparison*

1 Water levels varied seasonally at both TS and SRS with the highest water levels in the
2 wet season and the lowest levels in the dry season (Fig. 2A). Climatically-defined
3 seasonality did not coincide well with site-specific seasonality at TS in 2008, though it
4 matched well in 2009 (Fig. 2A). Measurements of T_{air} , D, and maximum daily PAR (PAR_{max})
5 were similar between study sites and exhibited expected seasonal patterns (Fig. 2B, C, D).

6 *Treatment and seasonal effects on NEP, ER, and GEP*

7 At the short-hydroperiod TS marsh, the periphyton removal treatment had no
8 significant effect on NEP, ER, or GEP ($p > 0.05$, Table 1, Fig. 3). It should be noted that this
9 treatment was effectually applied only during the mid to late dry season and early wet
10 season. Seasonality did have an effect on all three parameters, with significantly higher
11 rates of NEP, ER, and GEP observed in the dry season ($p < 0.001$, Table 1, Fig. 3). For all
12 analyses at TS, the treatment by season interaction was not significant ($p > 0.05$).

13 At the long-hydroperiod SRS marsh, the macrophyte removal treatment had a
14 significant effect on both NEP and GEP ($p < 0.0001$), but not on ER ($p > 0.05$, Table 1).
15 Significantly higher rates of NEP and GEP were observed for measurements made prior to
16 macrophyte removal (Fig. 4). In contrast to TS, there was no significant effect of
17 seasonality on any of the CO_2 exchange parameters at SRS. As such, all data from SRS were
18 pooled across seasons for subsequent analyses. The treatment by season interaction was
19 not significant for any of these analyses at SRS ($p > 0.05$, Table 1, Fig. 4).

20 *Short- vs. long-hydroperiod comparisons of CO_2 exchange*

21 Net ecosystem production did not differ significantly between TS in the dry season and
22 SRS ($p > 0.05$), though ER and GEP did differ significantly ($p < 0.001$, Table 2). Both ER and
23 GEP were significantly greater at TS during the dry season than they were at SRS. These

1 relationships changed when the TS wet season data were compared to the seasonally-
2 pooled data from SRS. In this case, NEP, ER, and GEP were all significantly different ($p <$
3 0.001) between sites with NEP and GEP greater at SRS, while ER remained greater at TS
4 (Table 2).

5 *Environmental drivers of NEP, ER, and GEP*

6 Multiple regression analyses indicated that T_{air} and D best predicted rates of NEP at TS,
7 while at SRS, T_{air} and PAR were the most important predictor variables for NEP. However,
8 neither of these regression equations accounted for much of the variation in the data (R^2_{adj}
9 of 0.26 and 0.24 for TS and SRS, respectively) and neither equation was significant ($p >$
10 0.05 , Table 3). The regression equations used to predict ER were significant at both sites (p
11 < 0.05) and included the variables water depth and D at TS and T_{air} and D at SRS (Table 3).
12 These equations explained 62% of the variation in ER rates at TS and 59% at SRS.
13 Equations for GEP were also significant at both sites ($p < 0.05$) and included water depth,
14 T_{air} , and D at TS, but only T_{air} at SRS (Table 3). The explanatory power of the GEP equation
15 was higher at TS than at SRS (R^2_{adj} of 0.65 and 0.34, respectively).

16 Although PAR is an important driver of CO_2 exchange, it was only incorporated as a
17 variable in the multiple regression analyses to account for seasonal variation (Fig. 2b).
18 Measurements of NEP were made under full-sun conditions and were assumed to
19 represent maximum daily rates of NEP. An analysis of PAR recorded during the 1 minute
20 NEP measurement intervals revealed that on all but two days (at SRS on 10/30/08 and
21 7/17/09) PAR was greater than or equal to (i.e., within one standard error) mean PAR
22 values recorded by the nearby micrometeorological stations during the measurement
23 period (data not shown).

1 In addition to environmental drivers, it was possible to explore the relationship
2 between plant biomass and CO₂ exchange at SRS because of the nature of the macrophyte
3 removal treatment. Linear regression analyses indicated that plant dry biomass exhibited
4 a significant positive relationship with both NEP and GEP at SRS ($R^2_{adj} = 0.71$ and 0.58 ,
5 respectively, $p < 0.0001$, data not shown). There was no significant relationship between
6 ER and plant biomass ($p > 0.05$, data not shown).

7

8 **Discussion**

9 *Treatment and seasonal effects on NEP, ER, and GEP*

10 Contrasting patterns of CO₂ flux responses to experimental treatments and seasons
11 were observed between the short- and long-hydroperiod Everglades marshes. At the
12 short-hydroperiod TS marsh, no significant differences in CO₂ exchange rates were
13 observed in the control vs. periphyton removal treatments. This indicated that during the
14 period in which the treatment was effectively applied (i.e., the mid-dry to early wet
15 season), periphyton did not significantly contribute to CO₂ fluxes at the site. Although
16 periphyton exhibits an immediate metabolic response to rewetting in the wet season
17 (Thomas et al. 2006a), the contribution of periphyton to ecosystem CO₂ exchange was not
18 strong enough to be detected.

19 Seasonality played a key role in influencing rates of CO₂ exchange at TS, such that
20 exchange rates were significantly lower during periods of inundation. The seasonal
21 patterns of NEP, ER, and GEP mirrored those reported at the nearby eddy covariance tower
22 (Schedlbauer et al. 2010). Flux rates were highest in the dry season, declined through the
23 early part of the wet season, and then increased again as the wet season proceeded.

1 Similarity between the two measurement methods was reflected in a linear regression
2 analysis of mean control chamber derived NEP vs. eddy covariance derived NEP (mean
3 values from 10 AM to 1 PM on the chamber measurement dates). This analysis yielded a
4 significant, positive relationship between the two methods ($y = 1.10x - 0.58$, $R^2_{\text{adj}} = 0.70$, p
5 < 0.001 , data not shown). Chamber measurements indicated that dry season fluxes were
6 clearly dominated by contributions from macrophytes, though heterotrophic contributions
7 from the well-aerated soil also played a role in determining ER. In the daytime hours of the
8 dry season, the TS marsh was a net sink for CO₂, and maximum rates of NEP reached 3.77
9 $\mu\text{mol CO}_2 \text{ m}^{-2} \text{ s}^{-1}$.

10 Following the onset of the wet season, the TS ecosystem became a net source of CO₂ to
11 the atmosphere during the daytime with NEP rates reaching a minimum of -1.36 $\mu\text{mol CO}_2$
12 $\text{m}^{-2} \text{ s}^{-1}$. The wet season shift from CO₂ sink to source principally reflected the seasonal
13 suppression of photosynthesis by macrophytes following flooding of the site (Schedlbauer
14 et al. 2010). The subsequent transition from low to moderate flux rates during the wet
15 season can be attributed to the growth and development of dense periphyton mats ~2
16 months into the season (Thomas et al. 2006b; Schedlbauer et al. 2010). It appears that
17 large, metabolically active periphyton mats shifted the ecosystem from net CO₂ source to
18 sink as the wet season proceeded. The contribution of periphyton to primary production at
19 TS was principally confined to the mid to late wet season. Although a prior study indicated
20 that periphyton was responsible for >50% of aboveground net primary production (ANPP)
21 at TS (Ewe et al. 2006), the present data set suggests a smaller role for periphyton in
22 determining site productivity. Scaling errors in the previous study may have contributed to
23 this discrepancy (Schedlbauer et al. 2010). The depressed NEP rates in the wet season also

1 indicate that geochemical fixation of CO₂ and subsequent marl accretion at TS was
2 proceeding slowly.

3 In contrast to TS, treatment effects were strong and seasonal effects were non-existent
4 at the long-hydroperiod SRS marsh. Rates of CO₂ exchange were strongly driven by
5 contributions from the emergent macrophyte community. In the absence of emergent
6 macrophytes, NEP, ER, and GEP rates significantly decreased and were often close to zero.
7 The effect of macrophyte removal was most dramatic for NEP and GEP, given that rates of
8 ER were low year-round, regardless of treatment. These data indicate that the contribution
9 of periphyton to ecosystem CO₂ exchange was minor in this long-hydroperiod marsh. This
10 finding supports data reported by Ewe et al. (2006) indicating that periphyton contributes
11 only 10% of the average ANPP at this study site.

12 As a peat marsh, it was expected that the long-hydroperiod SRS ecosystem would act as
13 a CO₂ sink and, on each measurement date under mid-day, full sun conditions, this was
14 found to be the case. Rates of NEP varied from 1.36 to 4.28 μmol CO₂ m⁻² s⁻¹. Despite data
15 showing the site as a CO₂ sink during daytime hours, the unusually dry conditions recorded
16 at the site in spring 2009 exposed peat soil at the site (J.L. Schedlbauer, personal
17 observation), and the exposure of these carbon-rich soils likely switched the site from CO₂
18 sink to source. Unfortunately, chamber measurements were logistically impossible during
19 this time period. The historical occurrence of site dry-downs is unknown, but likely to be
20 rare given the presence of >0.65 m deep peat deposits at the site.

21 In comparison with other subtropical and tropical freshwater wetlands where CO₂
22 exchange rates have been measured, the findings reported for these Everglades marshes
23 are notably different. Typically, net rates of CO₂ uptake by tropical wetlands are highest in

1 the wet season and lowest in the dry season (Morison et al. 2000; Jones and Humphries
2 2002). This pattern was not found in either short- or long-hydroperiod Everglades
3 marshes; the pattern was opposite at TS and there was no pattern at SRS. The seasonal
4 stimulation of primary productivity in many low-latitude wetlands is absent in these
5 oligotrophic Everglades marshes.

6 *Short- vs. long-hydroperiod comparisons of CO₂ exchange*

7 Both TS and SRS exhibited statistically similar rates of NEP when compared during the
8 TS dry season. This was unexpected given the contrasting primary producer communities
9 and hydroperiods at these sites. However, both GEP and ER were significantly higher at TS,
10 likely reflecting the contributions of the well-aerated soil microbial community to CO₂
11 fluxes from the site. During the wet season at TS, macrophyte leaf area was submerged and
12 photosynthetic rates declined (Schedlbauer et al. 2010), and this led to rates of NEP and
13 GEP that were significantly lower than at SRS. Despite the fact that both sites share *C.*
14 *jamaicense* as a dominant plant species, inundation had contrasting effects on site
15 productivity. These data suggest that the *C. jamaicense* population at SRS is better adapted
16 to flooded conditions, an idea supported by ANPP data for the species. *C. jamaicense* ANPP
17 at SRS is nearly double the value reported for TS (606 vs. 304 g C m⁻² year⁻¹, Ewe et al.
18 2006).

19 The seasonal and year-round mean values for NEP, ER, and GEP compared favorably
20 with data collected at the eddy covariance towers at each site (Schedlbauer et al. 2010; K.L.
21 Jimenez, unpublished manuscript). Carbon dioxide fluxes determined using chamber
22 measurement methods clearly captured representative data at both sites. However, it
23 should be noted that measurements of ER during inundated periods at both study sites may

1 have underestimated true ER. Although the chamber was darkened for ~1 min before a
2 measurement was recorded, it is probable that lags were present in the system. In sunlight,
3 aquatic photosynthesis will decrease the dissolved CO₂ concentration in the water column
4 and cause a net flux of CO₂ into the water. This flux likely continued following chamber
5 darkening because equilibration of CO₂ in a large volume of water proceeds relatively
6 slowly. Further, because the chamber was placed on a float at SRS, it is possible that water
7 upstream from the darkened chamber flowed under the float during ER measurements.
8 Although water flow at SRS is slow (1.5 – 4.5 cm s⁻¹, Riscassi and Schaffranek 2002), the
9 introduction of recently sunlit water depleted in dissolved CO₂ may have affected ER
10 measurements. Because of these possibilities, ER may have been underestimated at TS in
11 the wet season and at SRS year-round.

12 The data collected from these Everglades marshes contrast with other studies of CO₂
13 exchange in wetlands at low latitudes. Carbon dioxide flux rates in both short- and long-
14 hydroperiod marshes were much lower than values reported elsewhere. For instance, the
15 maximum rates of net CO₂ uptake in a papyrus (*Cyperus papyrus*) wetland were reported to
16 reach 24 μmol CO₂ m⁻² s⁻¹ (Jones and Humphries 2002), while maximum values in an
17 Amazonian floodplain were >40 μmol CO₂ m⁻² s⁻¹ (Morison et al. 2000). Also, in
18 comparison with growing season data from freshwater wetlands at mid to high latitude,
19 these Everglades CO₂ exchange rates were low (Bonneville et al. 2008; Rocha and Goulden
20 2008; Dusek et al. 2009). The present data strongly reflect the oligotrophic nature of
21 Everglades wetlands, where phosphorous availability is known to limit the productivity of
22 periphyton and macrophytes including *C. jamaicense* and *Eleocharis* sp. (Daoust and
23 Childers 1999; Noe et al. 2001; Iwaniec et al. 2006).

1 *Environmental drivers of NEP, ER, and GEP*

2 Environmental drivers of CO₂ exchange varied between the short- and long-
3 hydroperiod study sites. Considering the significant multiple regression equations for ER
4 and GEP, the most notable finding is that water level influenced both terms at TS, but had
5 no effect at SRS. This supports the findings reported above showing a significant seasonal
6 effect on CO₂ exchange at TS, but not at SRS. This relationship is important in light of
7 impending changes in Everglades water management as the Comprehensive Everglades
8 Restoration Plan (CERP) proceeds. These data indicate that increased water depths and
9 longer hydroperiods will have a substantial effect on CO₂ exchange in short-hydroperiod
10 marshes, but a limited effect within long-hydroperiod marshes. While other environmental
11 drivers (i.e., T_{air}, D, PAR) influence NEP, ER, and GEP, these factors are largely beyond
12 human control.

13 The weakness of the relationship between environmental drivers and the NEP and GEP
14 terms at SRS was likely related to heterogeneity in the site's plant community. Both terms
15 were significantly related to plant biomass, a metric that varies substantially from ridge to
16 slough. It seems that variation in the amount of plant material enclosed by the
17 measurement chamber was more important than any environmental variable in
18 determining CO₂ exchange rates. However, the same cannot be said for the weak
19 relationship between environmental drivers and NEP at TS where vegetation is relatively
20 heterogeneous. A longer-term dataset may help to resolve the role of environmental
21 drivers in determining NEP.

22 *Conclusions*

1 Although wetlands are among the world's most productive ecosystems, the freshwater
2 marshes of the Everglades are atypical. In contrast to previous research (Ewe et al. 2006),
3 the data reported here reflect that the Everglades is an oligotrophic ecosystem with low
4 productivity in both short- and long-hydroperiod marshes. Everglades wetlands are also
5 distinguished because seasonal cues, specifically the transition from dry to wet season, do
6 not yield pulses in productivity, as reported in other low-latitude wetland ecosystems.

7 Despite contrasting plant communities, net ecosystem production was surprisingly
8 similar between short-hydroperiod marshes in the dry season and long-hydroperiod
9 marshes year-round. Further, it is clear that (emergent) macrophytes were the dominant
10 contributors to CO₂ exchange rates during these periods. Whether these similarities will
11 persist in the future, as Everglades restoration under CERP proceeds, is uncertain.

12 It is likely that productivity in short-hydroperiod marshes, rather than long-
13 hydroperiod marshes, will be most affected by alterations in the timing and quantity of
14 water delivery to the Everglades. The current study shows that rates of CO₂ exchange in
15 short-hydroperiod marshes like TS are highly sensitive to seasonality and water levels.
16 Deeper water and longer hydroperiods are likely to decrease the amount of carbon stored
17 by these ecosystems on an annual basis. Additionally, past research indicates that plant
18 communities in short-hydroperiod Everglades marshes can change rapidly (i.e., within 3-4
19 years) in response to altered hydrologic regimes (Armentano et al. 2006). As a result, these
20 ecosystems may shift toward more hydrophytic plant communities. The net effect of
21 Everglades restoration activities on productivity in short-hydroperiod marshes is, as yet,
22 unclear, but any alterations will have wide-ranging effects given that these marshes occupy
23 approximately one-third of the Everglades' spatial extent (Davis et al. 2005).

1
2
3
4
5
6
7
8
9
10
11
12
13
14
15
16
17
18
19
20
21
22
23

Acknowledgements

This research was funded by the Department of Energy’s National Institute for Climate Change Research through grant number 07-SC-NICCR-1059. Thanks to Paulo Olivas and Jose Luciani for assistance in the field. Thanks also to Everglades National Park (Permits EVER-2007-SCI-0065, EVER-2008-SCI-0015 and EVER-2009-SCI-0013) and the Florida Coastal Everglades LTER project. The authors are grateful for the useful comments provided by three anonymous reviewers.

References

Armentano TV, Sah JP, Ross MS, Jones DT, Cooley HC, Smith CS (2006) Rapid responses of vegetation to hydrological changes in Taylor Slough, Everglades National Park, Florida, USA. *Hydrobiologia* 569:293-309

Beck C, Grieser M, Kottek M, Rubel F, Rudolf B (2006) Characterizing global climate change by means of Köppen Climate Classification. *Klimastatusbericht* 2005:139-149

Bonneville M-C, Strachan IB, Humphreys ER, Roulet NT (2008) Net ecosystem CO₂ exchange in a temperate cattail marsh in relation to biophysical properties. *Agricultural and Forest Meteorology* 148:69-81

Bubier JL, Crill PM, Moore TR, Savage K, Varner RK (1998) Seasonal patterns and controls on net ecosystem CO₂ exchange in a boreal peatland complex. *Global Biogeochemical Cycles* 12:703-714

Childers DL, Iwaniec D, Rondeau D, Rubio G, Verdon E, Madden CJ (2006a) Responses of sawgrass and spikerush to variation in hydrologic drivers and salinity in Southern

1 Everglades marshes. *Hydrobiologia* 596:273-292

2 Childers DL, Boyer JN, Davis SE, Madden CJ, Rudnick DT, Sklar FH (2006b) Relating
3 precipitation and water management to nutrient concentrations in the oligotrophic
4 “upside-down” estuaries of the Florida Everglades. *Limnology and Oceanography* 51:
5 602-616

6 Dahl TE (2011) Status and Trends of Wetlands in the Conterminous United States 2004 to
7 2009. U.S. Department of the Interior, Fish and Wildlife Service, Washington, D.C., 108
8 pp

9 Davis SM, Gunderson LH, Park WA, Richardson JR, Mattson JE (1994) Landscape dimension,
10 composition, and function in a changing Everglades ecosystem. In: Davis SM, Ogden JC
11 (eds) *Everglades: the Ecosystem and its Restoration*. St. Lucie Press, Delray Beach, pp
12 419-444

13 Davis SM, Gaiser EE, Loftus WF, Huffman AE (2005) Southern marl prairies conceptual
14 ecological model. *Wetlands* 25:821-831

15 Daoust RJ, Childers DL (1999) Controls on emergent macrophyte composition, abundance,
16 and productivity in freshwater Everglades wetland communities. *Wetlands* 19:262-275

17 Duever MJ, Meeder JF, Meeder LC, McCollom JM (1994) The climate of south Florida and its
18 role in shaping the Everglades ecosystem. In: Davis SM, Ogden JC (eds) *Everglades: the*
19 *Ecosystem and its Restoration*. St. Lucie Press, Delray Beach, pp 225-248

20 Dugan P (ed) (1993) *Wetlands: a World Conservation Atlas*. Oxford University Press, New
21 York, 187 pp

22 Dusek J, Cizkova H, Czerny R, Taufarova K, Smidova M, Janous D (2009) Influence of
23 summer flood on the net ecosystem exchange of CO₂ in a temperate sedge-grass marsh.

1 Agricultural and Forest Meteorology 149:1524-1530

2 Ewe SML, Gaiser EE, Childers DL, Iwaniec D, Rivera-Monroy VH, Twilley RR (2006) Spatial
3 and temporal patterns of aboveground net primary productivity (ANPP) along two
4 freshwater-estuarine transects in the Florida Coastal Everglades. *Hydrobiologia*
5 569:459-474

6 Gopal B, Junk WJ, Davis JS (eds) (2000) *Biodiversity in Wetlands: Assessment, Function,*
7 *and Conservation.* Backhuys Publishers, Leiden, 353 pp

8 Gottlieb AD, Richards JH, Gaiser EE (2006) Comparative study of periphyton community
9 structure in long and short-hydroperiod Everglades marshes. *Hydrobiologia* 569:195-
10 207

11 Hirota M, Tang Y, Hu Q, Hirata S, Kato T, Mo W, Cao G, Mariko S (2006) Carbon dioxide
12 dynamics and controls in a deep-water wetland on the Qinghai-Tibetan Plateau.
13 *Ecosystems* 9:673-688

14 Houghton RA, Skole DL (1990) Carbon. In: Turner BL, Clark WC, Kates RW, Richards JF,
15 Mathews JT, Meyer WB (eds) *The Earth as Transformed by Human Action.* Cambridge
16 University Press, New York, pp 393-408

17 Iwaniec DM, Childers DL, Rondeau D, Madden CJ, Saunders C (2006) Effects of hydrologic
18 and water quality drivers on periphyton dynamics in the southern Everglades.
19 *Hydrobiologia* 569:223-235

20 Jauhiainen J, Takahashi H, Heikkien JEP, Martikainen PJ, Vasander H (2005) Carbon
21 fluxes from a tropical peat swamp forest floor. *Global Change Biology* 11:1788-1797

22 Jones MB, Humphries SW (2002) Impacts of the C₄ sedge *Cyperus papyrus* L. on carbon and
23 water fluxes in an African wetland. *Hydrobiologia* 488:107-113

- 1 Keddy PA (2000) Wetland Ecology Principles and Conservation. Cambridge University
2 Press, New York, 614 pp
- 3 Keddy PA, Fraser, LH, Solomesch AI, Junk WJ, Campbell DR, Arroyo MTK, Alho CJR (2009)
4 Wet and wonderful: the world's largest wetlands are conservation priorities. BioScience
5 59:39-51
- 6 Kottek M, Grieser J, Beck C, Rudolf B, Rubel F (2006) World map of the Köppen-Geiger
7 climate classification updated. Meteorologische Zeitschrift 15:259-263
- 8 Light SS, Dineen JW, (1994) Water control in the Everglades: a historical perspective. In:
9 Davis SM, Ogden JC (eds) Everglades: the Ecosystem and its Restoration. St. Lucie Press,
10 Delray Beach, pp 47-84
- 11 Lodge TE (2005) The Everglades Handbook: Understanding the Ecosystem. CRC Press, New
12 York, 302 pp
- 13 Mitsch WJ, Gosselink JG (2007) Wetlands. John Wiley and Sons, Inc., Hoboken, 582 pp
- 14 Morison JIL, Piedade MTF, Müller E, Long SP, Junk WJ, Jones MB (2000) Very high
15 productivity of the C₄ aquatic grass *Echinochloa polystachya* in the Amazon floodplain
16 confirmed by net ecosystem CO₂ flux measurements. Oecologia 125:400-411
- 17 National Climatic Data Center (NCDC) (2009) Royal Palm Rs daily surface data.
18 <http://www.ncdc.noaa.gov/oa/ncdc.html>, NCDC, Asheville, accessed 4/10/09
- 19 Neue HU, Gaunt JL, Wang ZP, Becker-Heidmann P, Quijano C (1997) Carbon in tropical
20 wetlands. Geoderma 79:163-185
- 21 Noe GB, Childers DL, Jones RD (2001) Phosphorus biogeochemistry and the impact of
22 phosphorus enrichment: why is the Everglades so unique? Ecosystems 4:603-624
- 23 Ogden JC (2005) Everglades ridge and slough conceptual ecological model. Wetlands

1 25:810-820

2 Riscassi AL, Schaffranek RW (2002) Flow velocity, water temperature, and conductivity in

3 Shark River Slough, Everglades National Park, Florida: July 1999 – August 2001. U.S.

4 Geological Survey, Reston, 40 pp

5 Rocha AV, Goulden ML (2008) Large interannual CO₂ and energy exchange variability in a

6 freshwater marsh under consistent environmental conditions. *Journal of Geophysical*

7 *Research* 113:G04019

8 Roulet NT, LaFleur PM, Richard PJH, Moore TR, Humphreys ER, Bubier J (2007)

9 Contemporary carbon balance and late Holocene carbon accumulation in a northern

10 peatland. *Global Change Biology* 13:397-411

11 Schabenberger O, Pierce FJ (2002) *Contemporary Statistical Models for the Plant and Soil*

12 *Sciences*. CRC Press, New York, 738 pp

13 Schedlbauer JL, Oberbauer SF, Starr G, Jimenez KL (2010) Seasonal differences in the CO₂

14 exchange of a short-hydroperiod Florida Everglades marsh. *Agricultural and Forest*

15 *Meteorology* 150:994-1006.

16 Thomas S, Gaiser EE, Gantar M, Scinto LJ (2006a) Quantifying the responses of calcareous

17 periphyton crusts to rehydration: a microcosm study (Florida Everglades). *Aquatic*

18 *Botany* 84:317-323

19 Thomas S, Gaiser EE, Tobias FA (2006b) Effects of shading on calcareous benthic

20 periphyton in a short-hydroperiod oligotrophic wetland (Everglades, FL, USA).

21 *Hydrobiologia* 569:209-221

22 U.S. Army Corps of Engineers (USACE) and South Florida Water Management District

23 (SFWMD) (1999) *Central and Southern Florida Project Comprehensive Review Study*,

- 1 Final Integrated Feasibility Report and Programmatic Environmental Impact Statement.
- 2 USACE, Jacksonville District, Jacksonville and SFWMD, West Palm Beach, 4033 pp
- 3 Wright EL, Black CR, Cheesman AW, Drages T, Large D, Turner BL, Sjögersten S (2011)
- 4 Contribution of subsurface peat to CO₂ and CH₄ fluxes in a neotropical peatland. *Global*
- 5 *Change Biology* 17:2867-2881
- 6 Zedler JB, Kercher S (2005) Wetland resources: status, trends, ecosystem services, and
- 7 restorability. *Annual Review of Environment and Resources* 30:39-74
- 8

1 **Table 1.** F-values from mixed-effects ANOVA analyses of net ecosystem production (NEP),
 2 ecosystem respiration (ER), and gross ecosystem production (GEP) measured at Taylor
 3 Slough (TS) and Shark River Slough (SRS). All models had the fixed effects treatment,
 4 season, and treatment by season interaction. Treatment at TS was the periphyton removal,
 5 while at SRS it was the macrophyte removal, and both treatments were compared with
 6 control measurements. Season refers to dry or wet season. Asterisks indicate significance
 7 at the following levels: $p < 0.001$ (***), $0.001 \leq p \leq 0.01$ (**), $0.01 < p \leq 0.05$ (*).

8

Site	Variable	Treatment	Season	Treatment × Season
TS	NEP	0.04	27.74***	0.41
	ER	0.59	65.13***	0.08
	GEP	0.21	109.12***	0.88
SRS	NEP	132.44***	2.79	2.88
	ER	11.45**	0.14	3.52
	GEP	117.98***	2.91	3.82

9

10

1 **Table 2.** Mean \pm one SE for CO₂ exchange rates ($\mu\text{mol CO}_2 \text{ m}^{-2} \text{ s}^{-1}$) and F-values for the
 2 variables net ecosystem production (NEP), ecosystem respiration (ER), and gross
 3 ecosystem production (GEP). Means and F-values are reported for one-way ANOVAs
 4 performed to compare data from Taylor Slough (TS) during the dry and wet seasons
 5 individually with seasonally-pooled data from Shark River Slough (SRS). An asterisk
 6 indicates that the TS data for a given variable were significantly different from data from
 7 SRS ($p < 0.001$).

8

Variable	<u>TS Dry Season</u>		<u>TS Wet Season</u>		<u>SRS</u>
	Mean \pm SE	F-value	Mean \pm SE	F-value	Mean \pm SE
NEP	2.49 \pm 0.27	1.12	0.82 \pm 0.26	27.78*	2.92 \pm 0.28
ER	-2.53 \pm 0.19	181.14*	-0.97 \pm 0.09	17.03*	-0.55 \pm 0.09
GEP	5.11 \pm 0.33	14.40*	1.79 \pm 0.24	12.69*	3.35 \pm 0.31

9
10

1 **Table 3.** Results from multiple regression analyses in which full models for NEP and GEP
 2 included the predictor variables water depth relative to the soil surface, air temperature
 3 (T_{air}), vapor pressure deficit (D), and photosynthetically active radiation (PAR). The PAR
 4 term was excluded from the full ER models. Missing values indicate that a given predictor
 5 variable was not included in the final model. An asterisk next to a predictor variable's
 6 coefficient indicates significance at $p < 0.10$.

7

	<u>Taylor Slough (TS)</u>			<u>Shark River Slough (SRS)</u>		
	<u>NEP</u>	<u>ER</u>	<u>GEP</u>	<u>NEP</u>	<u>ER</u>	<u>GEP</u>
Intercept	5.68	-0.17	4.83	2.55	1.13	0.29
Water depth	--	1.30	-2.13*	--	--	--
T_{air}	-0.37*	--	-0.27	0.12	-0.10*	0.12*
D	3.56*	-0.81*	3.31	--	0.80*	--
PAR	--	NA	--	-0.002	NA	--
F-statistic	3.29	11.63	9.03	2.42	7.56	5.57
Tolerance	0.63	0.32	0.27	0.59	0.32	0.59
R^2_{adj}	0.26	0.62	0.65	0.24	0.59	0.34
p-value	0.0761	0.0002	0.0034	0.1594	0.0178	0.0460
AIC	8.13	-9.76	8.04	-0.24	-19.54	1.57

8

9

10

1 **Figure Legends**

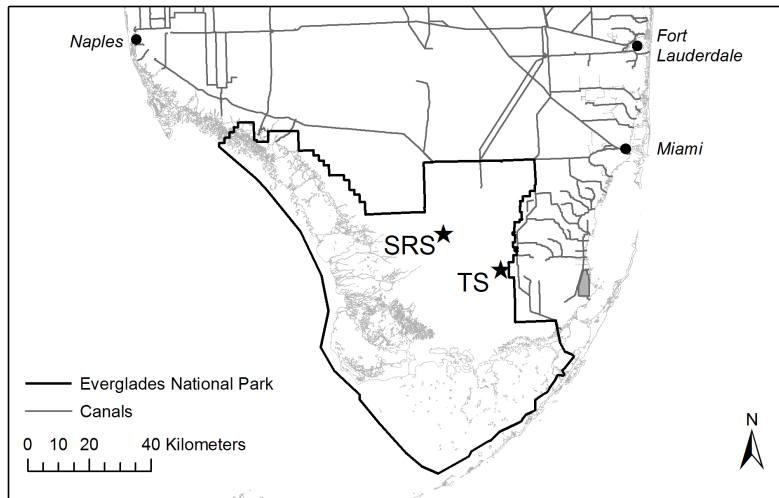
2 **Figure 1.** Map showing the location of the study sites Taylor Slough (TS) and Shark River
3 Slough (SRS) within Everglades National Park.

4 **Figure 2.** Micrometeorological data from the short-hydroperiod Taylor Slough (TS) and
5 long-hydroperiod Shark River Slough (SRS) sites. Shown are water level data relative to
6 the soil surface with site specific wet seasons indicated by horizontal bars (A), air
7 temperature (T_{air} , °C, B), vapor pressure deficit (D, kPa, B), and daytime maximum
8 photosynthetically active radiation (PAR_{max} , $\text{mol m}^{-2} \text{s}^{-1}$, D). All data are presented as 7-day
9 running means so that seasonal patterns rather than day-to-day variation can be readily
10 observed. Note that micrometeorological measurements did not begin until early July 2008
11 at SRS.

12 **Figure 3.** Means \pm one SE for CO_2 exchange rates ($\mu\text{mol CO}_2 \text{ m}^{-2} \text{ s}^{-1}$) measured at the short-
13 hydroperiod Taylor Slough (TS) site. Shown are values for net ecosystem production (NEP,
14 A), ecosystem respiration (ER, B), and gross ecosystem production (GEP, C) for both
15 control and periphyton removal treatments. Dry and wet seasons are indicated by white
16 and grey shading, respectively.

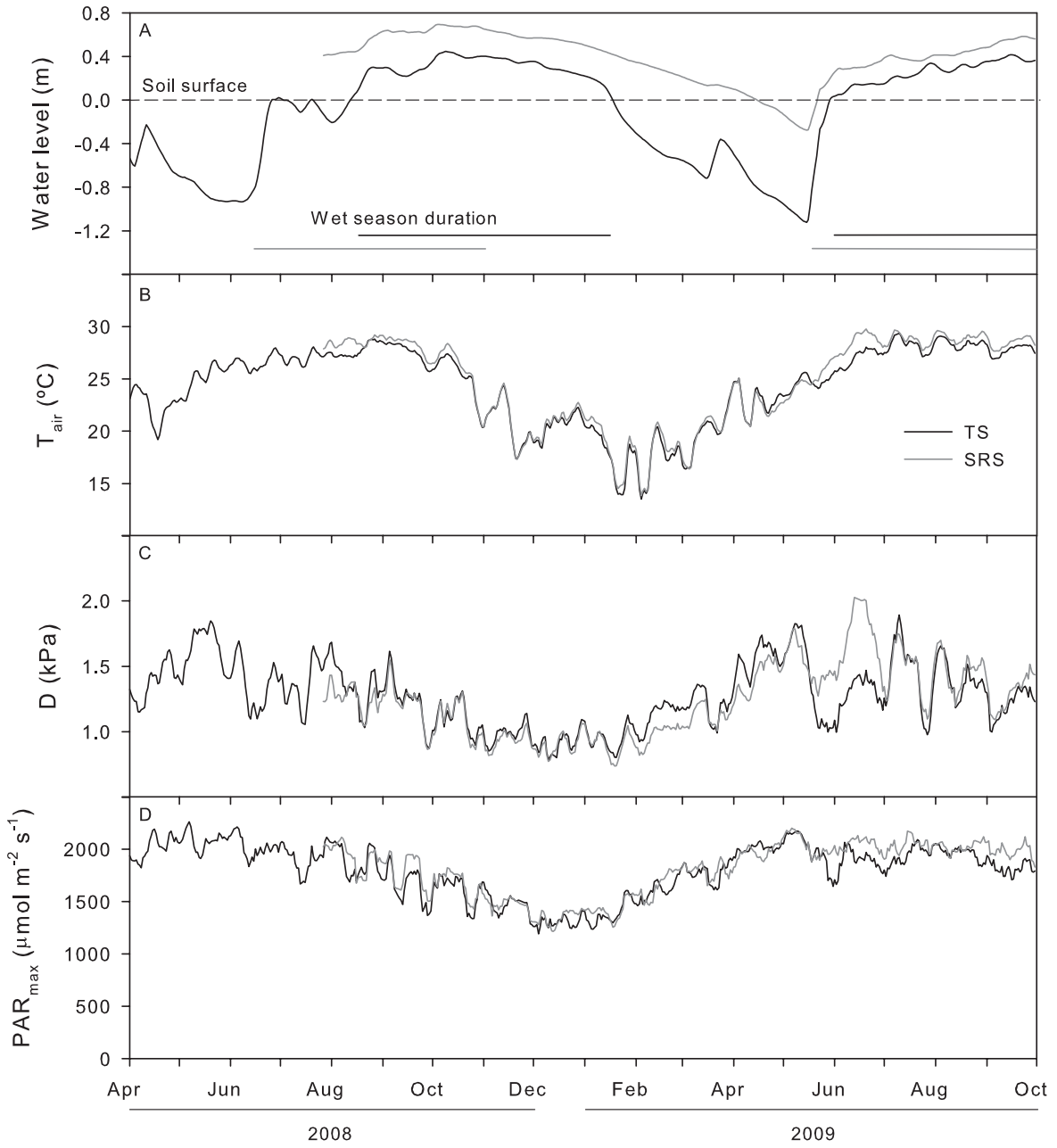
17 **Figure 4.** Means \pm one SE for CO_2 exchange rates ($\mu\text{mol CO}_2 \text{ m}^{-2} \text{ s}^{-1}$) measured at the long-
18 hydroperiod Shark River Slough (SRS) site. Shown are values for net ecosystem production
19 (NEP, A), ecosystem respiration (ER, B), and gross ecosystem production (GEP, C) for both
20 control and macrophyte removal treatments. Dry and wet seasons are indicated by white
21 and grey shading, respectively.

22



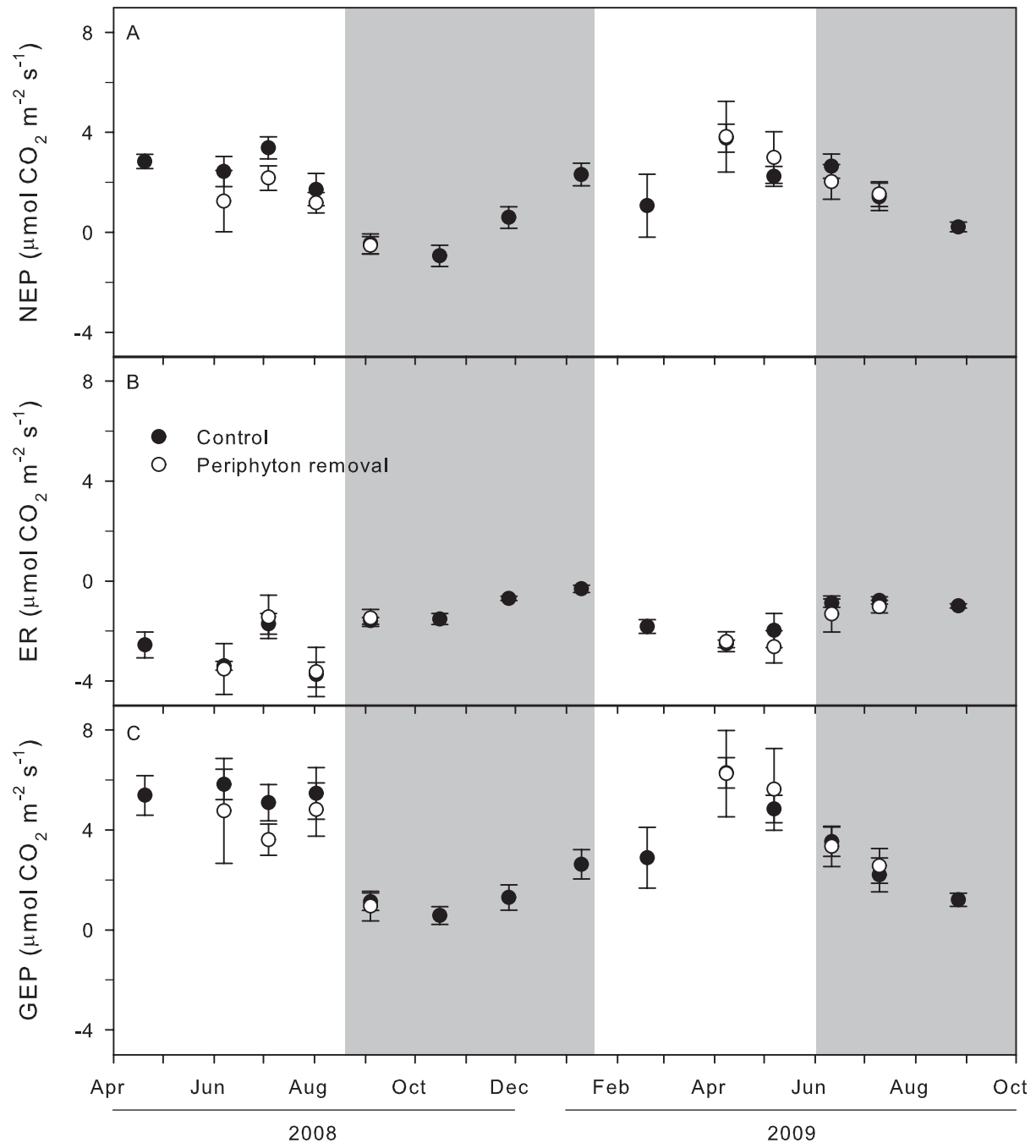
1
2
3
4
5
6

Fig. 1



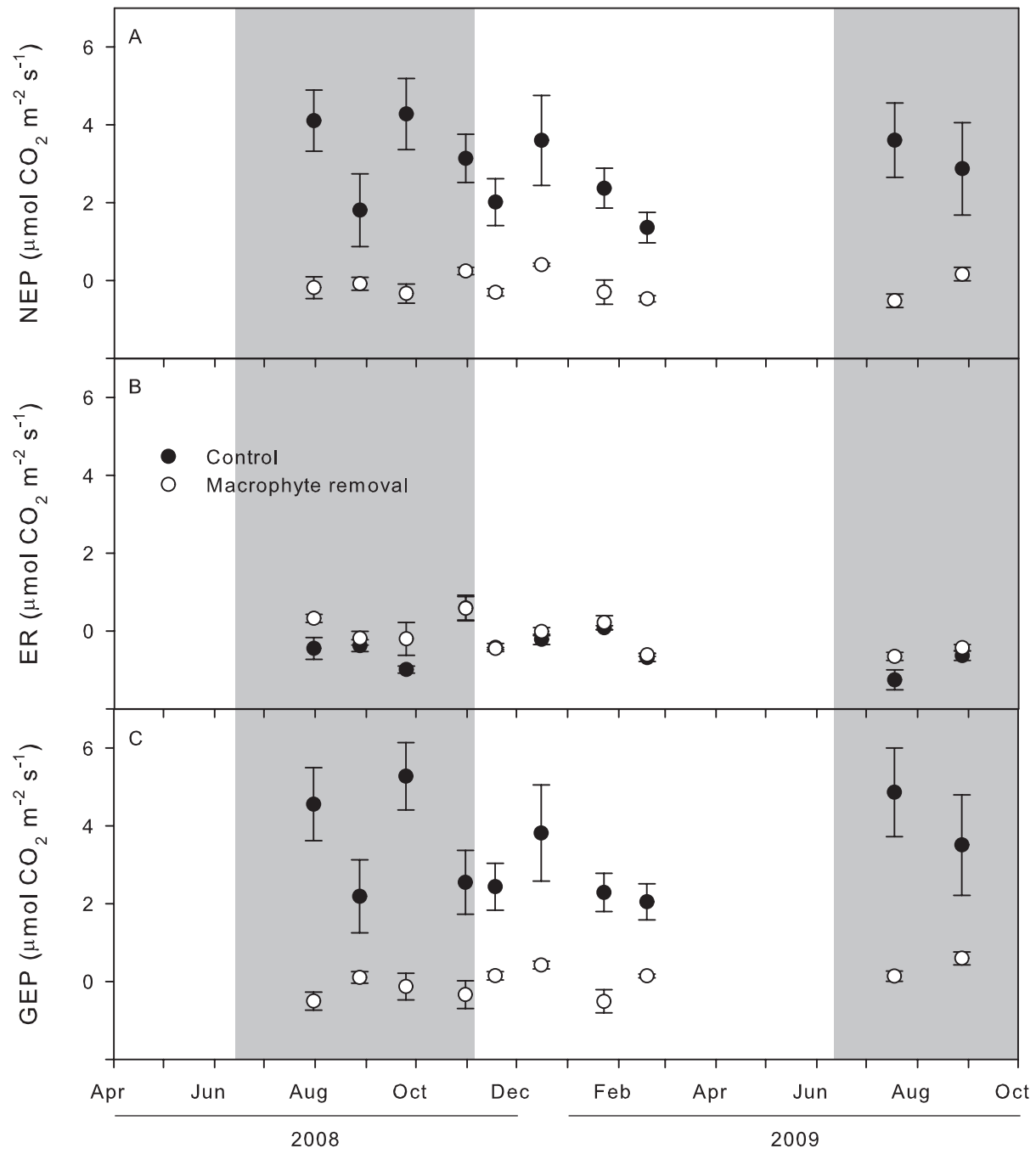
1
2
3
4
5
6

Fig. 2



1
2
3
4
5

Fig. 3



1

2

3

4 Fig. 4