

6-4-2016

Forecasting the Great Trade Collapse

Hakan Yilmazkuday
Florida International University

Follow this and additional works at: https://digitalcommons.fiu.edu/economics_wps

 Part of the [Economics Commons](#)

Recommended Citation

Yilmazkuday, Hakan, "Forecasting the Great Trade Collapse" (2016). *Economics Research Working Paper Series*. 113.
https://digitalcommons.fiu.edu/economics_wps/113

This work is brought to you for free and open access by the Department of Economics at FIU Digital Commons. It has been accepted for inclusion in Economics Research Working Paper Series by an authorized administrator of FIU Digital Commons. For more information, please contact dcc@fiu.edu.

Forecasting the Great Trade Collapse

Hakan Yilmazkuday*

June 4, 2016

Abstract

This paper introduces a simple methodology to forecast international trade. The main innovation is to calculate non-unitary expenditure elasticities of import demand implied by non-homothetic preferences in the previous year to be further combined with the current change in expenditure to forecast the current imports. Using U.S. data on aggregate expenditure and good-level imports, we test the performance of the methodology in forecasting international imports. The methodology is successful in forecasting not only the Great Trade Collapse and the corresponding recovery period but also the other periods in the sample.

JEL Classification F14, F17

Key Words: Great Trade Collapse; Non-Homothetic Preferences; Forecasting

*Hakan Yilmazkuday: Department of Economics, Florida International University, Miami, FL 33199, USA; Tel: +1-305-348-2316; Fax: +1-305-348-1524; E-mail: hakan.yilmazkuday@fiu.edu

1 Introduction

During the recent financial crisis of 2008-2009, the decline in international trade has been more than the decline in domestic expenditure/income, the so-called Great Trade Collapse. Figure 1 shows the corresponding experience of the U.S. economy where the decline in U.S. imports is more than three times the decline in U.S. expenditure. This has been a surprise for the trade literature, since trade and expenditure/income are supposed to move together, mostly according to the unitary expenditure/income elasticity of demand implication based on constant elasticity of substitution (CES) preferences that are commonly used in the literature. This may cause a problem, especially while conducting policy, because the policy makers simply would like to know how trade responds to changes in overall economic activity. Accordingly, in order to explain the deviation of trade from expenditure/income, many studies have focused on alternative approaches to get rid of the unitary expenditure elasticity of demand by considering either multi-sector models with asymmetric spending changes across sectors or models with inventories. Within these studies, Alessandria et al. (2010a, 2010b) have connected the trade collapse to the dynamics of inventories and compositional differences between traded goods and GDP, while Bems et al. (2010), Levchenko et al. (2011), Eaton et al. (2015), Bussiera et al. (2013), and Behrens et al. (2013) have explained the trade collapse through the composition of demand.¹ Based on these approaches, among others, the literature has (mostly) agreed that the collapse in aggregate expenditure, concentrated on trade-intensive durable goods, is the main driver of the trade collapse, although other factors such as inventory adjustment and trade credit have exacerbated the decline in trade.

Although the literature has successfully explained the Great Trade Collapse, it has missed an alternative and relatively easy approach to get rid of the unitary expenditure elasticity of demand; i.e., relaxing the assumption of CES preferences that imply homotheticity. Such an approach

¹Also see Bems et al., 2013, for an excellent survey of the existing literature

would not only connect the collapse in aggregate expenditure to the reduction in trade through endogenously determined non-unitary expenditure elasticity of demand but also allow us to forecast international trade in a simple way by combining the expenditure elasticity of demand with the changes in overall expenditure. This paper takes this approach by considering non-homothetic preferences.

Within the set of non-homothetic preferences, we consider a constant absolute risk aversion (CARA) utility function of which optimization results in an expenditure elasticity of import demand that can easily be calculated using data only on quantities and prices, without any estimation process. Accordingly, first, using data on U.S. imports (including information on both quantities and unit prices) covering the quarterly period over 2000q1-2012q4, we calculate expenditure elasticities of demand for U.S. imports at the good level. Second, for each period, calculated expenditure elasticities of the previous year (at the good level) are multiplied with the current annual percentage change in U.S. expenditure to obtain current (*ex post*) forecasted annual percentage change in U.S. imports (at the good level). Therefore, two pieces of information are enough for forecasting (the annual percentage change in international trade): the expenditure elasticity measures coming from the previous year and the annual percentage change in expenditure in the current period. We show that the forecasting methodology is highly successful in matching the distribution of the annual percentage change in U.S. imports across goods. We also consider the median behavior across goods to forecast the overall percentage change in U.S. imports. The results are promising: Our methodology can forecast not only the Great Trade Collapse and the corresponding recovery but also the other periods in the sample in a precise way.² The results are further supported by several

²See Silva and Hassani (2015) and the references therein for the empirical literature on the forecast of trade flows. This paper deviates from such studies (that are based on pure econometrics) by considering the forecast implications of an international trade model based on non-CES preferences.

formal tests regarding the forecast performance.

The rest of the paper is organized as follows. Section 2 introduces the data and the methodology (based on the optimization of individual behavior) to motivate the empirical investigation. Section 3 depicts the results and includes relevant discussion. Section 4 concludes.

2 Data and Methodology

The U.S. imports data are from the US. International Trade Commission (<http://dataweb.usitc.gov/>) covering imports from 238 source countries and 1,047 goods at the SITC 4-digit level during the quarterly period over 2000q1-2012q4; the lists of source countries and goods are given in the Online Appendix. The data set includes (i) the value of imports (including duties and the import charges such as cost, insurance, freight) and (ii) quantity of imports. Accordingly, we calculate import unit values/prices by dividing the value of imports by the quantity of imports; although such an approach to calculate unit prices may be subject to measurement errors at the good level, assuming that such errors are random across goods, the distribution of the forecast performance across goods and at the aggregate level should not be affected. The data we use for overall expenditure (to be denoted by E_t , below) are U.S. Retail and Food Services Sales obtained from FRED Economic Data web page (<http://research.stlouisfed.org/fred2/>).

We assume that a typical U.S. individual has the following utility U_t out of consuming goods (each denoted by g) of which varieties at time t come from different source countries, each denoted by s :

$$U_t = \left(\prod_g \left(\sum_s \kappa_{s,t}^g \left(1 - e^{-\gamma^g q_{s,t}^g} \right) \right)^{\delta^g} \right)^{\eta_t} (H_t)^{1-\eta_t}$$

where $q_{s,t}^g$ is the quantity of good g imported from country s , $\gamma^g > 0$ represents a good- g -specific parameter, $\kappa_{s,t}^g$ represents a source-good-time-specific taste parameter, δ^g is the expenditure share

of good g in imports, η_t is the time-varying expenditure share of overall imports, and H_t is the composite index of home/domestic goods at time t . As is evident, although individual goods and the composite index of home/domestic goods are connected to each other through a Cobb-Douglas function, the varieties of each good coming from alternative source countries are connected to each other through a CARA function.³

Utility maximization results in the following import demand function for $q_{s,t}^g$:⁴

$$q_{s,t}^g = \frac{E_t^g - \sum_{s'} \left(\frac{p_{s',t}^g}{\gamma^g} \right) \ln \left(\frac{p_{s,t}^g \kappa_{s',t}^g}{p_{s',t}^g \kappa_{s,t}^g} \right)}{\sum_{s'} p_{s',t}^g}$$

where $E_t^g = \sum_{s'} p_{s',t}^g q_{s,t}^g = E_t \delta^g \eta_t$ is the expenditure on imported good g (with E_t representing total expenditure of the individual), and $p_{s,t}^g$ is the price of $q_{s,t}^g$. The corresponding expenditure elasticity of demand $\varphi_{s,t}^g$ is given by:

$$\varphi_{s,t}^g = \frac{\partial q_{s,t}^g}{\partial E_t} \frac{E_t}{q_{s,t}^g} = \frac{E_t^g}{q_{s,t}^g \sum_{s'} p_{s',t}^g} \quad (1)$$

where $\varphi_{s,t}^g$ is source-good-time specific and can be calculated, without any estimation process, using U.S. imports data on quantities $q_{s,t}^g$'s, unit prices $p_{s',t}^g$'s, and the expenditure E_t^g on imported good g . According to this expression, $\varphi_{s,t}^g$ can be non-unitary when $q_{s,t}^g$'s are heterogeneous across source countries. In order to see this, consider the opposite extreme case in which $q_{s,t}^g = q_t^g$ for all s ; in such a case, Equation 1 would reduce to unity (since $E_t^g = \sum_{s'} p_{s',t}^g q_{s,t}^g$) which is the common implication of homotheticity. Therefore, the heterogeneity of $q_{s,t}^g$'s across varieties (represented by source countries) is the key to non-homotheticity in this model.

³Behrens and Murata (2007) have also considered CARA preferences and shown their theoretical properties in details.

⁴The derivation of the demand function is given in the Online Appendix. Note that, after assuming that individual source countries have negligible impact on the U.S. price aggregates, the demand function implies the following non-constant elasticity of substitution $-\frac{p_{s,t}^g}{q_{s,t}^g} \frac{\partial q_{s,t}^g}{\partial p_{s,t}^g} = \frac{1}{\gamma^g q_{s,t}^g}$, which changes with the quantity demanded.

In order to obtain good-specific expenditure elasticities of import demand in each period (i.e., φ_t^g), we simply consider the median of calculated expenditure elasticities of import demand across source countries (i.e., the median of $\varphi_{s,t}^g$ across s 's). Once we obtain φ_t^g 's, we further use their value for the same quarter in the previous year (i.e., φ_{t-4}^g), together with the annual percentage change in total expenditure (i.e., $\log(E_t) - \log(E_{t-4})$), to forecast the annual percentage change in quantity imported in the current period (i.e., $\log(\widehat{q}_t^g) - \log(\widehat{q}_{t-4}^g)$) at the good level according to the following specification:

$$\underbrace{\log(\widehat{q}_t^g) - \log(\widehat{q}_{t-4}^g)}_{\text{Forecasted Annual \% Change in Quantity Imported}} = \underbrace{\varphi_{t-4}^g}_{\text{Expenditure Elasticity}} \times \underbrace{(\log(E_t) - \log(E_{t-4}))}_{\text{Annual \% Change in Expenditure}}$$

Therefore, in order to forecast the annual percentage change in U.S. real imports at the good level, we use information only on the expenditure elasticity of import demand coming from the previous year (i.e., estimation/historical segment) and the annual percentage change in overall expenditure in the current period (i.e., exogenous variables in the out-of-estimation sample). Once we forecast $\log(\widehat{q}_t^g) - \log(\widehat{q}_{t-4}^g)$, we compare it with the actual data on the percentage change in U.S. real imports at the good level (i.e., $\log(q_t^g) - \log(q_{t-4}^g)$) which we calculate as the median percentage change in U.S. real imports across source countries (i.e., the median of $\log(q_{s,t}^g) - \log(q_{s,t-4}^g)$ across s 's for each good g).

Finally, in order to forecast the overall percentage change in U.S. real imports, we consider median (across goods) forecasted percentage change in U.S. real imports (i.e., the median of $\log(\widehat{q}_t^g) - \log(\widehat{q}_{t-4}^g)$ across g 's). We compare these forecasts with the corresponding median percentage change in U.S. real imports data (i.e., the median of $\log(q_t^g) - \log(q_{t-4}^g)$ across g 's).⁵

⁵The corresponding Matlab codes are available upon request to provide the reader more details.

3 Empirical Results

This section depicts the empirical results based on the forecast performance of the model. While the next subsection visually checks the goodness of fit at the good level and for the median good (representing the overall percentage change in U.S. real imports), the second subsection provides the results of formal tests regarding the forecast performance for the median good which is essential for conducting macroeconomic policy.

3.1 Visual Checks of Forecast Performance

The distribution of good-level forecast results (for the corresponding median countries) are given in Figure 2 as kernel density estimates where we distinguish between the period covering the Great Trade Collapse and the corresponding recovery period. We define the period of the Great Trade Collapse (the corresponding recovery period) by considering the negative (positive) percentage changes in the U.S. real imports that are equal to at least one standard deviation in absolute terms (i.e., about 10%).⁶ The Epanechnikov kernel function is used for the estimation. Regarding the bandwidth selection, in order to have healthy comparison across the considered series, we consider the highest optimal bandwidth of 22.55 in Table 1 that shows the optimal bandwidths for both the data series and the forecasted series using alternative methodologies within the Epanechnikov kernel function. As is evident, in both the Great Trade Collapse and the corresponding recovery periods, the distribution of good-level forecasts on the percentage change in U.S. real imports are matched with the actual data, although the forecasts slightly underestimate both the collapse and the recovery periods. Even though Figure 2 is informative for understanding the distribution of good-level forecasts, it is less useful for macroeconomic policy makers who mostly need an average (across goods) forecast of international trade.

⁶Such periods are also depicted in Figure 4.

Accordingly, we depict the overall forecast performance of our methodology on the percentage change in U.S. real imports in Figure 3, where the percentage changes in actual U.S. imports and forecasted U.S. real imports are matched (for the median good and source country in our sample), including both the Great Trade Collapse and recovery periods. To provide the reader further details, we also compare the actual and forecasted percentage changes in U.S. real imports in Figure 4 for each quarter in our sample; the left bottom corner represents the quarters during the Great Trade Collapse, while the right upper corner represents the period of recovery. As is evident, the results are very promising, because the actual and forecasted data are very close to each other according to the 45 degree line, where the correlation coefficient is about 0.83. It is implied that non-homothetic preferences are highly successful in matching the changes in overall U.S. real imports as well; nevertheless, for robustness, we achieve several formal tests, below, regarding the overall forecast performance of the model.

The success of the model regarding the forecast performance in Figures 2-4 can be attributed to the consideration of the quantities (of imports) $q_{s,t}^g$ that change across source countries. In particular, the expenditure elasticity of demand $\varphi_{s,t}^g$ given in Equation 1 would reduce to unity if $q_{s,t}^g$'s were the same across source countries; this is exactly the implication of models with homotheticity such as the ones that consider CES preferences that are common in the existing literature. However, by considering the implications of non-homothetic preferences (achieved by using CARA utility functions), this paper has shown that the heterogeneity of $q_{s,t}^g$'s across source countries is an important factor that should be considered in forecasting international trade.

Although the distribution (Figure 2) and the median of the forecast performance across goods (Figures 3 and 4) are successful in connecting the changes in consumer expenditure to the changes in imports, the results for individual goods are not as promising as in Figures 2-4. The corresponding individual good-level results are given in the Online Appendix, where non-unitary expenditure

elasticities are also shown. Although 909 goods (out of 1047) have positive correlation coefficients between the actual and forecasted data, which is an indicator of success for the model, the correlation coefficients range between -0.97 and 0.79 with a median value (across goods) of 0.25 . It is implied that different goods are subject to different shocks regarding the connection between expenditure and imports, and these shocks cancel each other out when the results based on median or overall distribution of goods are considered (in Figures 2-4). Therefore, although the model can be used to successfully forecast the overall imports and the distribution across goods, it should be used with caution regarding the forecast of individual goods. It is important to emphasize that this result may partly have been caused by possible measurement errors in prices that we proxy by unit values obtained from the trade data.

3.2 Formal Tests of Forecast Performance

This subsection achieves formal tests of forecast performance for the median good (representing the overall percentage change in U.S. real imports) depicted in Figures 3-4. In formal terms, we define the data of y_t as the median of $\log(q_t^g) - \log(q_{t-4}^g)$ across g 's and the forecast of the model \hat{y}_t as the median of $\log(\widehat{q}_t^g) - \log(\widehat{q}_{t-4}^g)$ across g 's. Accordingly, the model is connected to the data according the following expression:

$$y_t = \hat{y}_t + \hat{u}_t$$

where \hat{u}_t represents the forecast errors for $t = 1, \dots, T$ with T representing the final date in the sample. Since we are using the expenditure elasticity of import demand coming from the previous year (i.e., estimation/historical segment) and the annual percentage change in overall expenditure in the current period (i.e., exogenous variables in the out-of-estimation sample), we are achieving an *ex post* forecast based on one full seasonal cycle.

We focus on three desirable characteristics based on the forecast performance, namely unbiased-

ness, efficiency, and no-pattern-in-residuals. The results based on unbiasedness are given in Table 2, where mean forecast error (mean absolute forecast error) is about -0.013 (0.046) which corresponds to a systematic bias of only about 1.3% (4.6%). A more formal analysis for unbiasedness is also achieved by running a regression of data on the forecast (based on the model) as follows:

$$y_t = \alpha + \beta \hat{y}_t + \hat{u}_t$$

where the null hypothesis of unbiasedness consists of $\alpha = 0$ and $\beta = 1$. The corresponding results are given in Table 2, where the 95% confidence intervals of both α and β imply that the null hypothesis is accepted with a high R^2 value of 0.689 . Therefore, based on alternative statistics and tests, we can claim that the forecast (based on the model) is unbiased at the 5% significance level.

The results based on the efficiency of the forecast are also given in Table 2, where the error sum squares ESS is about 0.148 , while the root mean squared error RMSE is about 0.056 . Since RMSE can be used as a measure of standard error for the forecast errors of \hat{u}_t , we can obtain the residual plot of \hat{u}_t and its 95% confidence interval as shown in Figure 5; it is evident that almost all \hat{u}_t 's are within their 95% confidence interval, which is an indicator supporting no-pattern-in-residuals. Nevertheless, since the statistics of ESS and RMSE do not mean much without a comparison point, we also consider the coefficient of determination according to the following expression:

$$R^2 = 1 - \left(\frac{\sum_{t=1}^T \hat{u}_t^2}{\sum_{t=1}^T (y_t - \bar{y})^2} \right)$$

which takes a high value of 0.667 , supporting the forecast performance. Regarding the efficiency of the forecast, we also consider Theil's inequality coefficient defined as follows:

$$TIC = \frac{\sqrt{\sum_{t=1}^T \hat{u}_t^2 / T}}{\sqrt{\sum_{t=1}^T y_t^2 / T} + \sqrt{\sum_{t=1}^T \hat{y}_t^2 / T}}$$

which can take a value between 0 and 1, with $TIC = 0$ representing a perfect fit and $TIC = 1$ representing the wrong fit. The results are given in Table 2, where $TIC = 0.305$, supporting the forecast performance.

Finally, we consider the mean squared error (as a measure of efficiency) and its percentage decomposition into bias, variance and covariance by using the following expression:

$$MSE = \sum_{t=1}^T \widehat{u}_t^2 / T = \underbrace{\sum (\bar{y}_t - \widehat{\bar{y}}_t)^2}_{\text{Bias}} + \underbrace{(s_y - s_{\widehat{y}})^2}_{\text{Variance}} + \underbrace{2(1 - r_{y\widehat{y}}) s_y s_{\widehat{y}}}_{\text{Covariance}}$$

where \bar{y}_t and $\widehat{\bar{y}}_t$ represent the average values of y_t and \widehat{y}_t , respectively; $s_y = \sum (y_t - \bar{y}_t)^2 / T$; $s_{\widehat{y}} = \sum (\widehat{y}_t - \widehat{\bar{y}}_t)^2 / T$; and $r_{y\widehat{y}}$ represents the correlation coefficient between y_t and \widehat{y}_t . The results are given in Table 2 where MSE due to the covariance strongly dominates other effects; it is implied that most of the MSE is due to the unsystematic forecasting errors, which supports the forecast performance based on unbiasedness, efficiency and no-pattern-in-residuals.

4 Concluding Remarks

We introduced a very simple and tractable approach to forecast international trade. The main innovation is to use non-unitary expenditure elasticities of demand obtained by (a type of) non-homothetic preferences in the previous year, together with data on current expenditure, to forecast current international trade. Using quarterly data on good-level U.S. imports and U.S. expenditure, we tested the performance of this approach in forecasting the U.S. imports. The results show that the forecasted U.S. imports are precisely matched with the actual U.S. imports during not only the Great Trade Collapse and the corresponding recovery period but also other periods in the sample. Although it has been shown that the model can be used to successfully forecast the overall imports and the corresponding distribution across goods, it should be used with caution regarding the forecast of individual goods that are subject to different shocks.

Regarding implications for policy makers, it is important to emphasize that this paper has considered an *ex post* forecasting strategy rather than an *ex ante* one, where the expenditure elasticity of import demand coming from the previous year has been considered as the estimation/historical segment, while the annual percentage change in overall expenditure in the current period has been considered as the exogenous variable in the out-of-estimation sample. Although an *ex ante* forecast has not been the objective of this paper, it can easily be achieved by combining expenditure elasticities of demand with any forecast/expectation regarding the future economic activity.

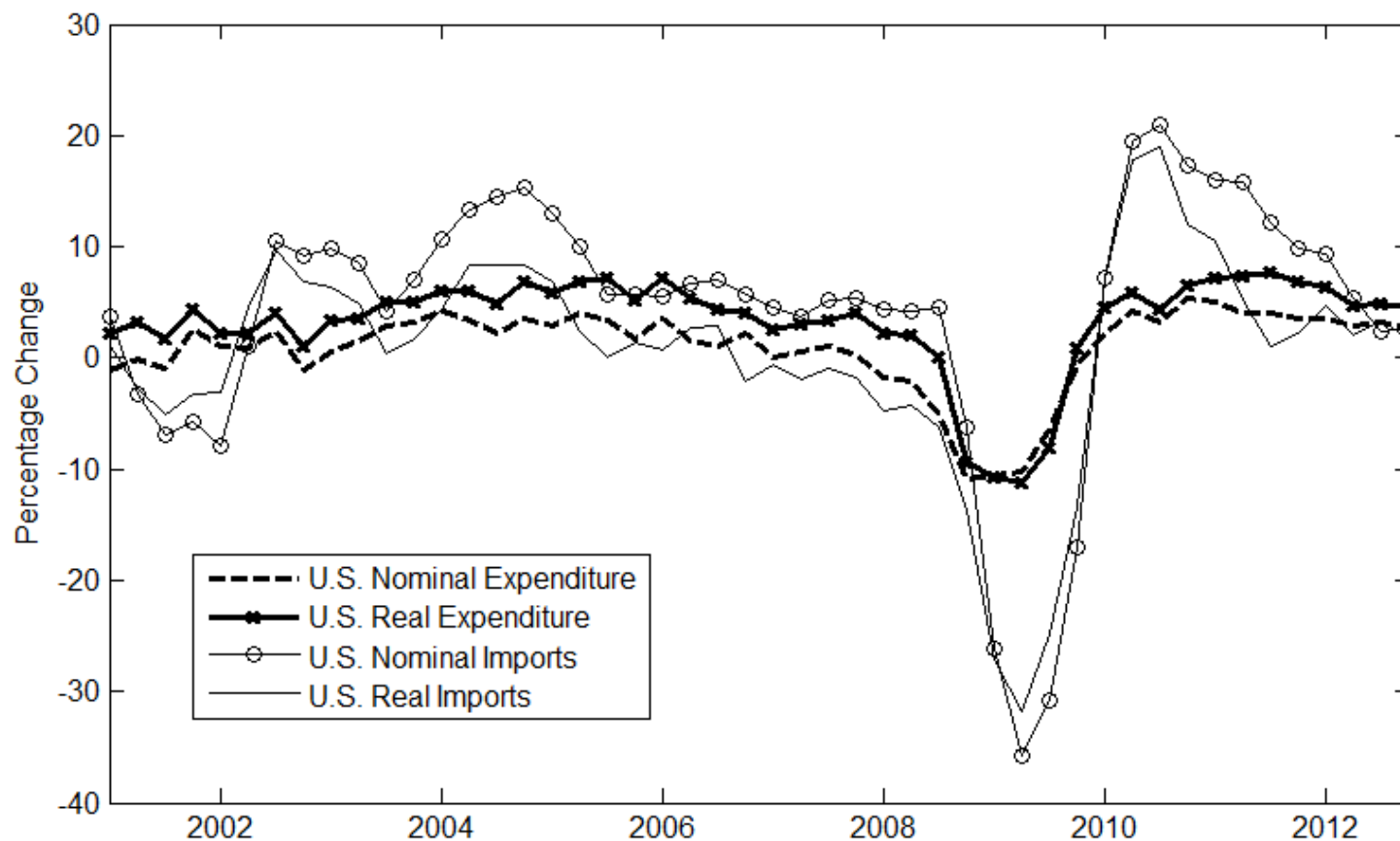
The results in this paper should not be taken as a criticism of the existing literature on the Great Trade Collapse; they are rather an outcome of an alternative approach based on non-unitary expenditure elasticities of demand implied by non-homothetic preferences. Since this approach only requires a simple calculation based on quantity and price data of trade (rather than any estimation), the analysis is further simplified. Although understanding the underlying mechanisms behind the Great Trade Collapse still requires a detailed modeling as the existing literature has already achieved, our approach in this paper simply reduces such complicated mechanisms to the consideration of non-unitary expenditure elasticities of demand, leading to the forecasting of the Great Trade Collapse in a simple way.

References

- [1] Alessandria, G., J. P. Kaboski, and V. Midrigan (2010a). "Inventories, Lumpy Trade, and Large Devaluations," *American Economic Review*, 100:1-38.
- [2] Alessandria, G., J. P. Kaboski, and V. Midrigan (2010b): "The Great Trade Collapse of 2008-09: An Inventory Adjustment?," *IMF Economic Review* 58: 254-294.

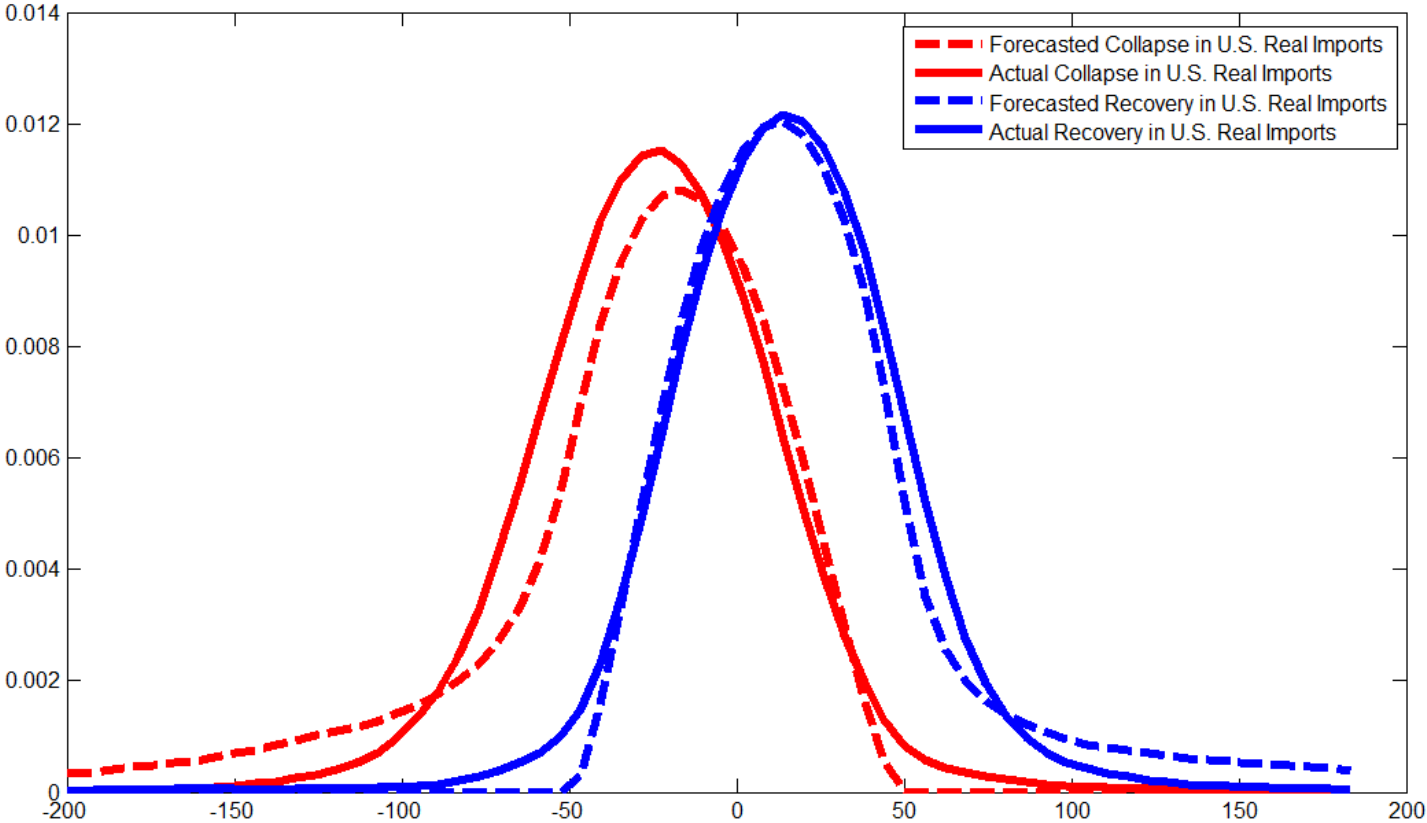
- [3] Behrens, K. and Murata, Y. (2007), "General equilibrium models of monopolistic competition: A new approach" *Journal of Economic Theory*. 136: 776 –787.
- [4] Behrens, K., Corcos, G., and Mion, Giordano, (2013) "Trade Crisis? What Trade Crisis?", *Review of Economics and Statistics*, 95(2): 702–709.
- [5] Bems, R., R. C. Johnson, and K.-M. Yi (2010), "Demand Spillovers and the Collapse of Trade in the Global Recession," *IMF Economic Review* 58: 295-326.
- [6] Bems, R., R. C. Johnson, and K.-M. Yi (2013), "The Great Trade Collapse," *Annual Review of Economics*, 5(1): 375-400.
- [7] Bussière, M., Callegari, G., Ghironi, F., Sestieri, G., Yamano, N. (2013), "Estimating Trade Elasticities: Demand Composition and the Trade Collapse of 2008-2009," *American Economic Journal: Macroeconomics*, 5(3): 118-51.
- [8] Eaton, J., S. Kortum, B. Neiman, and J. Romalis (2015): "Trade and the Global Recession," mimeo.
- [9] Levchenko, A., L. Lewis, and L. Tesar (2011): "The Collapse of International Trade during the 2008–09 Crisis: In Search of the Smoking Gun," *IMF Economic Review* 58: 214-253.
- [10] Silva E.S., and Hassani, H. (2015) "On the use of singular spectrum analysis for forecasting US trade before, during and after the 2008 recession." *International Economics*, 141: 34–49.

Figure 1- Percentage Change in U.S. Expenditure versus U.S. Imports



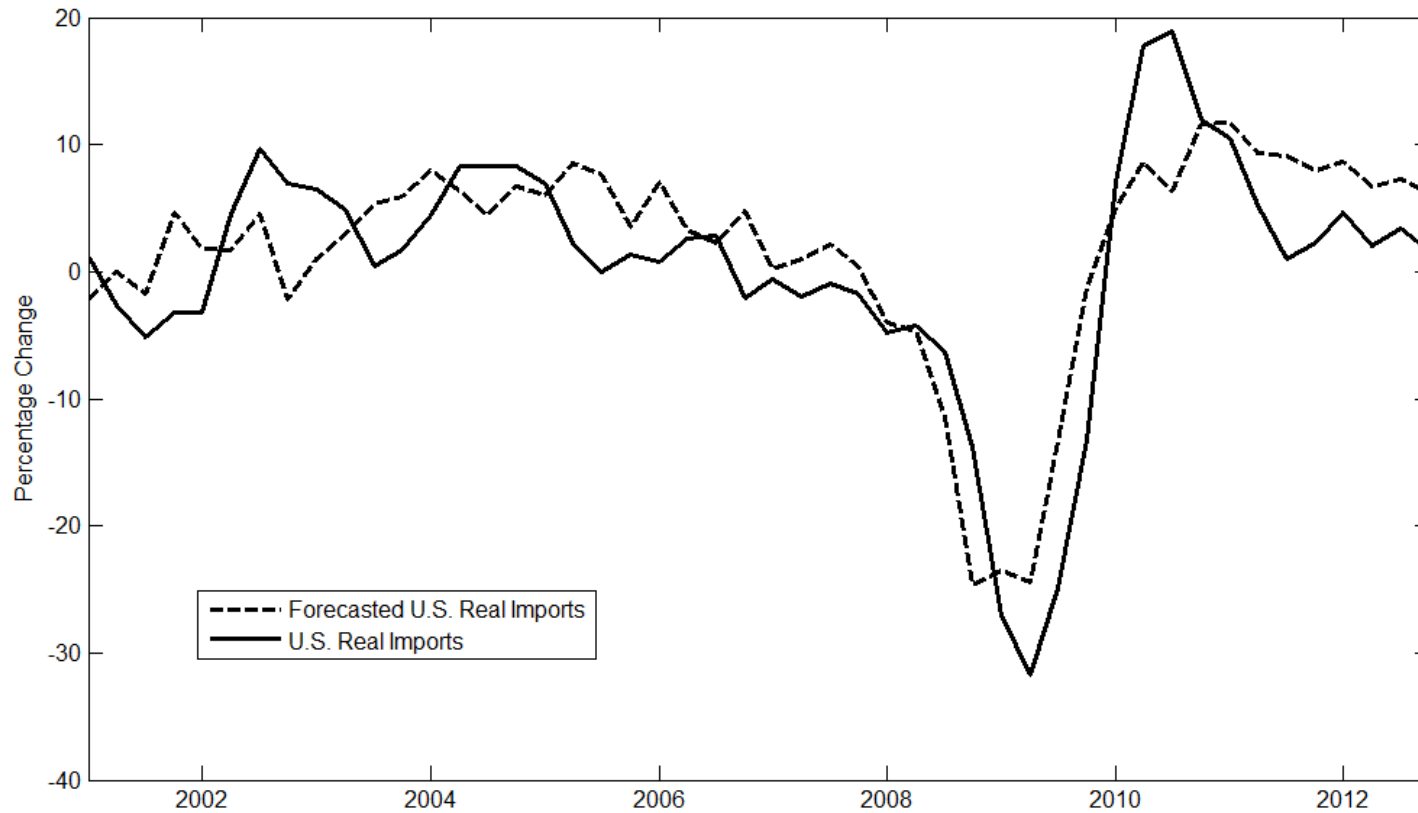
Notes: Percentage change in U.S. nominal (real) expenditure is measured by the annual percentage change in U.S. Nominal (Real) Retail and Food Services Sales. The percentage change in U.S. nominal (real) imports is measured by the median annual percentage change in value (quantity) traded across source countries and 4-digit SITC goods.

Figure 2 - Distribution of Percentage Changes in U.S. Real Imports across Goods



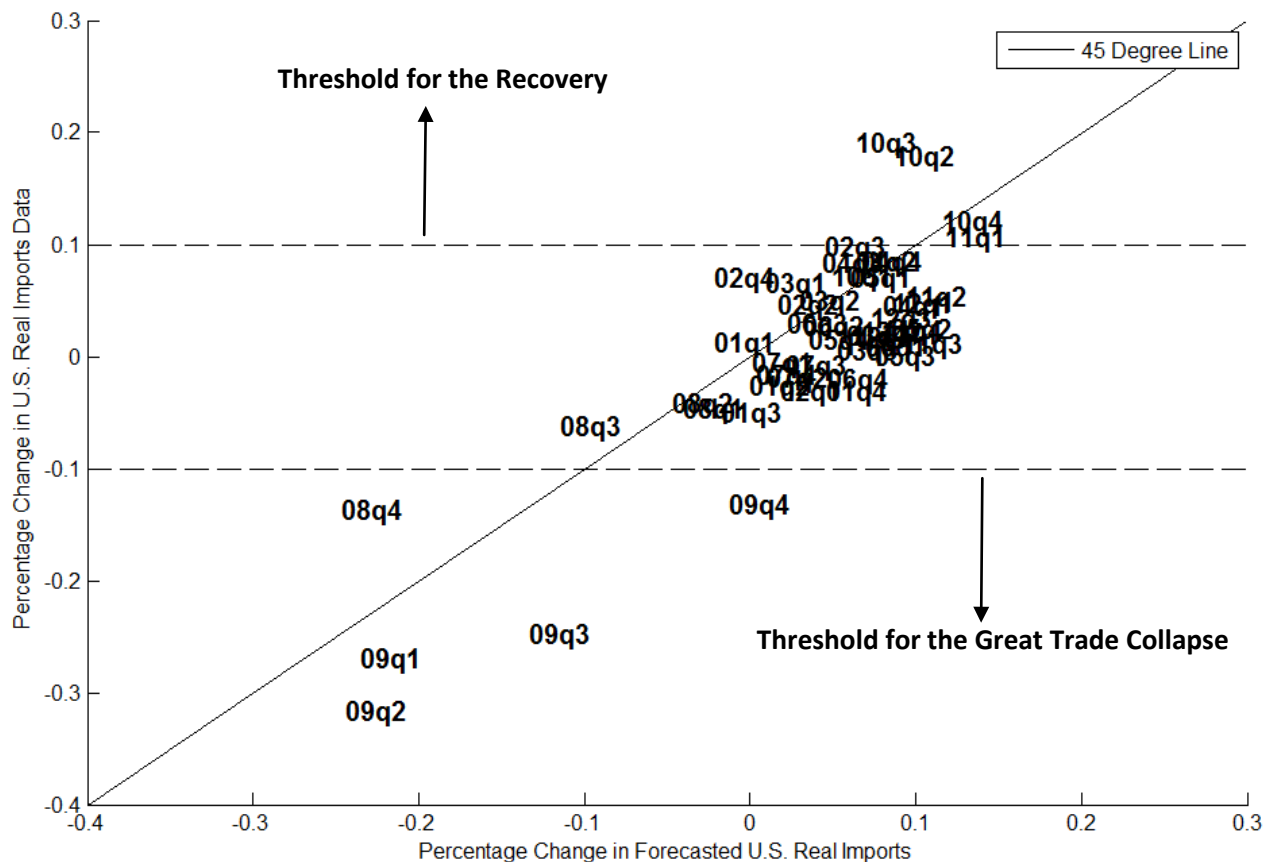
Notes: The percentage change in U.S. real imports has been calculated for each 4-digit SITC good using the median annual percentage change in quantity imported across source countries and quarters considered. In order to have a healthy comparison, the bandwidth of the Epanechnikov kernel function has been set equal to 22.55 in all series, which is the highest optimal number (according to the cross-validation methodology) in Table 1.

Figure 3- Overall Forecast Performance of the Model



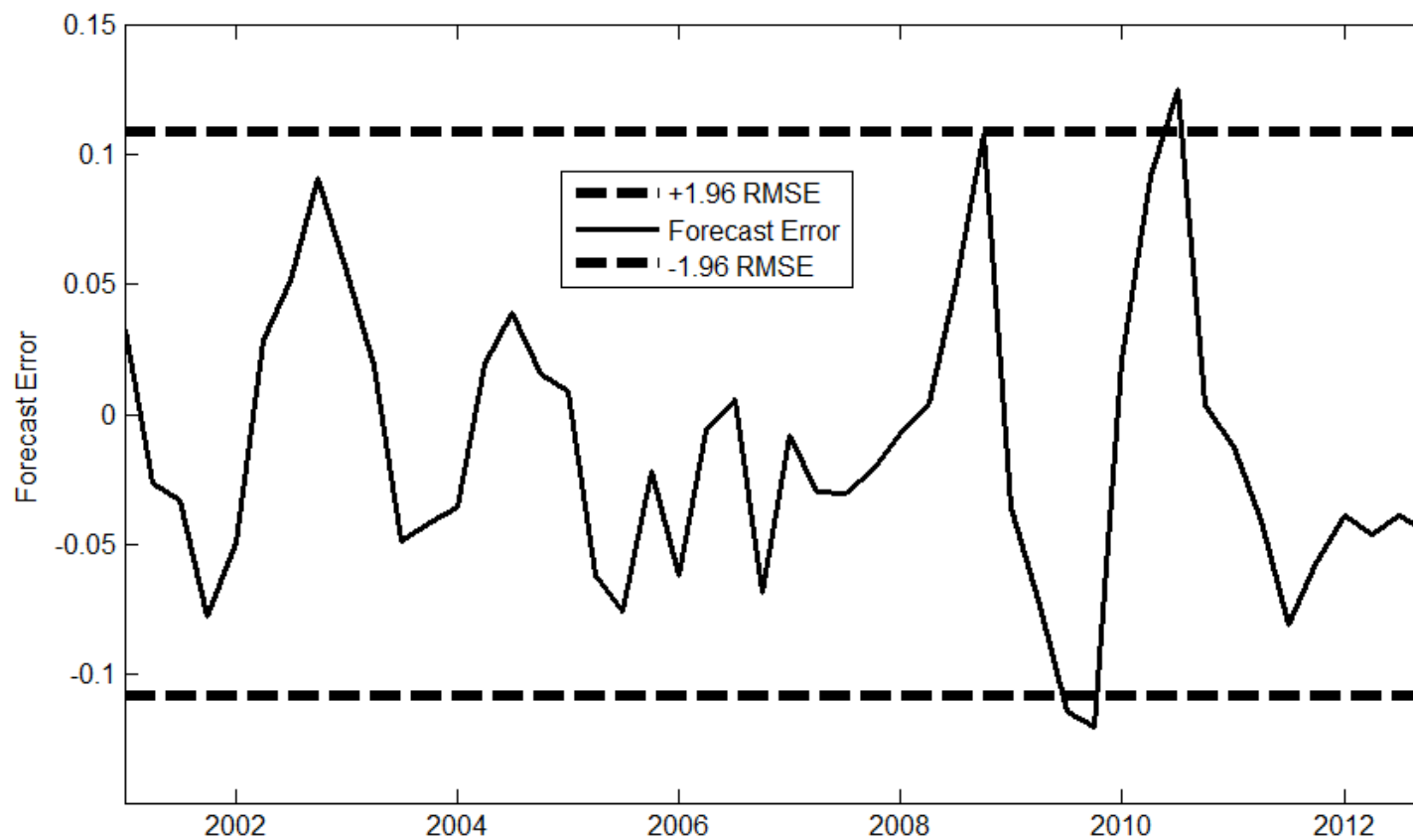
Notes: The percentage change in U.S. real imports has been calculated as the median annual percentage change in quantity imported across source countries and 4-digit SITC goods. The forecasted percentage change in U.S. real imports has been calculated by multiplying the current annual percentage change in U.S. Nominal (Real) Retail and Food Services Sales with the expenditure elasticity of demand of the previous year.

Figure 4 - The Great Trade Collapse and Recovery



Notes: Each point represents a quarter (e.g., 09q1 represents the first quarter of 2009). The absolute value of the thresholds for the Great Trade Collapse and the corresponding recovery are set to 0.1. The correlation coefficient between the forecast and the actual data is 0.8299. See notes below Figure 3 for further details.

Figure 5 - Residual Plot



Notes: The solid line shows the forecast errors, while the dashed lines represent their 95% confidence interval calculated by the root mean squared error.

Table 1 - Bandwidth Selection for the Kernel Estimation

Methodology	Series Considered for Bandwidth Selection			
	Forecast of trade during the Great Trade Collapse	Actual trade during the Great Trade Collapse	Forecast of trade during the recovery period	Actual trade during the recovery period
Iterative	1.23	12.24	1.16	9.27
Direct Plug-In	17.42	21.53	9.44	16.51
Maximal Smoothing	19.78	14.58	10.32	11.5
Biased Cross-Validation	22.55	6.23	5.21	4.88
Least Squares Cross-Validation	22.55	11.46	5.21	10.69
Reference Density	18.32	13.5	9.56	10.65

Notes: Regarding the estimation of the distribution of percentage change in U.S. real imports across goods, each cell shows the optimal bandwidth when Epanechnikov kernel function is used with alternative bandwidth selection methodologies.

Table 2 - Forecast Evaluation of the Model

Forecast Evaluation Methodology	Results
Unbiasedness	
Mean Error (ME)	-0.013
Mean Absolute Error (MAE)	0.046
Regression of Data on Forecast (Null: Constant=0, Coefficient=1)	95% CI for the constant: [-0.029,0.004] 95% CI for the coefficient: [0.761, 1.141] R-Squared: 0.689
Efficiency	
Error Sum of Squares (ESS)	0.148
Root Mean Squared Error (RMSE)	0.056
Coefficient of Determination (R-Squared)	0.667
Theil's Inequality Coefficient (TIC)	0.305
Mean Squared Error (MSE)	0.003
% due to Bias	5.888
% due to Variance	4.893
% due to Covariance	89.219

Notes: The forecast performance tests in this table compare the data and the forecasts based on the model as depicted in Figures 3-4.

1 Online Appendix - Utility Maximization

We assume that a typical U.S. individual has the following CARA utility U_t out of consuming goods (each denoted by g) of which varieties at time t coming from different source countries, each denoted by s :

$$U_t = \left(\prod_g \left(\sum_s \kappa_{s,t}^g \left(1 - e^{-\gamma^g q_{s,t}^g} \right) \right)^{\delta^g} \right)^{\eta_t} (H_t)^{1-\eta_t}$$

where $q_{s,t}^g$ is the quantity of good g imported from country s , $\gamma^g > 0$ represents a good- g -specific parameter, $\kappa_{s,t}^g$ represents a source-good-time-specific taste parameter, δ^g is the expenditure share of good g in imports, η_t is the time-varying expenditure share of overall imports, and H_t is the composite index of home/domestic goods at time t .

The optimization is achieved by maximizing utility where the budget constraint is given by:

$$\sum_{s'} p_{s',t}^g q_{s,t}^g + p_t^H H_t = Y_t$$

where p_t^H is the price of H_t , and Y_t is income.¹ Accordingly, the Lagrangian can be written as:

$$L = \left(\prod_g \left(\sum_s \kappa_{s,t}^g \left(1 - e^{-\gamma^g q_{s,t}^g} \right) \right)^{\delta^g} \right)^{\eta_t} (H_t)^{1-\eta_t} - \lambda \left(\sum_{s'} p_{s',t}^g q_{s,t}^g + p_t^H H_t - Y_t \right)$$

We start with taking the derivative with respect to $q_{s,t}^g$ (imports from source country s for good g):

$$q_{s,t}^g : \frac{-\gamma^g \kappa_{s,t}^g e^{-\gamma^g q_{s,t}^g}}{\left(\sum_s \kappa_{s,t}^g \left(1 - e^{-\gamma^g q_{s,t}^g} \right) \right)} \left(\prod_g \left(\sum_s \kappa_{s,t}^g \left(1 - e^{-\gamma^g q_{s,t}^g} \right) \right)^{\delta^g \eta_t} \right) (H_t)^{1-\eta_t} = \lambda p_{s,t}^g$$

We also take the derivative with respect to $q_{s',t}^g$ (imports from source country s' for the very same good g):

$$q_{s',t}^g : \frac{-\gamma^g \kappa_{s',t}^g e^{-\gamma^g q_{s',t}^g}}{\left(\sum_s \kappa_{s,t}^g \left(1 - e^{-\gamma^g q_{s,t}^g} \right) \right)} \left(\prod_g \left(\sum_s \kappa_{s,t}^g \left(1 - e^{-\gamma^g q_{s,t}^g} \right) \right)^{\delta^g \eta_t} \right) (H_t)^{1-\eta_t} = \lambda p_{s',t}^g$$

¹Both p_t^H and Y_t do not enter into any other calculation in the paper

Combining the last two expressions results in:

$$-\kappa_{s,t}^g e^{-\gamma^g q_{s,t}^g} p_{s',t}^g = -\kappa_{s',t}^g e^{-\gamma^g q_{s',t}^g} p_{s,t}^g$$

where we have essentially eliminated any other aggregates due to the homotheticity of our utility function at the aggregate level (i.e., due to the way that we connect imported goods and the composite index of home/domestic goods through a Cobb-Douglas function).

Taking the log of both sides, we obtain:

$$\ln \kappa_{s,t}^g - \gamma^g q_{s,t}^g + \ln p_{s',t}^g = \ln \kappa_{s',t}^g - \gamma^g q_{s',t}^g + \ln p_{s,t}^g$$

Multiplying both sides by $p_{s',t}^g$ results in:

$$\ln \kappa_{s,t}^g p_{s',t}^g - \gamma^g q_{s,t}^g p_{s',t}^g + \ln p_{s',t}^g p_{s',t}^g = \ln \kappa_{s',t}^g p_{s',t}^g - \gamma^g q_{s',t}^g p_{s',t}^g + \ln p_{s,t}^g p_{s',t}^g$$

Taking the summation across s' on both sides results in:

$$\sum_{s'} \ln \kappa_{s,t}^g p_{s',t}^g - \gamma^g q_{s,t}^g \sum_{s'} p_{s',t}^g + \sum_{s'} \ln p_{s',t}^g p_{s',t}^g = \sum_{s'} \ln \kappa_{s',t}^g p_{s',t}^g - \gamma^g \sum_{s'} q_{s',t}^g p_{s',t}^g + \sum_{s'} \ln p_{s,t}^g p_{s',t}^g$$

where we have taken some variables (i.e., $q_{s,t}^g$ and γ^g) that are independent of s' outside of the aggregators. If we use the definition of $E_t^g = \sum_{s'} p_{s',t}^g q_{s,t}^g$ (which is also given in the text), we have:

$$\sum_{s'} \ln \kappa_{s,t}^g p_{s',t}^g - \gamma^g q_{s,t}^g \sum_{s'} p_{s',t}^g + \sum_{s'} \ln p_{s',t}^g p_{s',t}^g = \sum_{s'} \ln \kappa_{s',t}^g p_{s',t}^g - \gamma^g E_t^g + \sum_{s'} \ln p_{s,t}^g p_{s',t}^g$$

Multiplying both sides by -1 results in:

$$\gamma^g q_{s,t}^g \sum_{s'} p_{s',t}^g - \sum_{s'} \ln p_{s',t}^g p_{s',t}^g = \gamma^g E_t^g - \sum_{s'} \ln p_{s,t}^g p_{s',t}^g - \sum_{s'} \ln \kappa_{s',t}^g p_{s',t}^g + \sum_{s'} \ln \kappa_{s,t}^g p_{s',t}^g$$

Leaving $q_{s,t}^g$ alone on the left hand side, we have:

$$q_{s,t}^g = \frac{\gamma^g E_t^g - \sum_{s'} \ln p_{s,t}^g p_{s',t}^g + \sum_{s'} \ln p_{s',t}^g p_{s',t}^g - \sum_{s'} \ln \kappa_{s',t}^g p_{s',t}^g + \sum_{s'} \ln \kappa_{s,t}^g p_{s',t}^g}{\gamma^g \sum_{s'} p_{s',t}^g}$$

which can be rewritten as:

$$q_{s,t}^g = \frac{\gamma^g E_t - \sum_{s'} p_{s',t}^g \ln \left(\frac{p_{s,t}^g \kappa_{s',t}^g}{p_{s',t}^g \kappa_{s,t}^g} \right)}{\gamma^g \sum_{s'} p_{s',t}^g}$$

Finally, dividing both the numerator and the denominator of the right hand side by γ^g , we obtain:

$$q_{s,t}^g = \frac{E_t - \sum_{s'} \left(\frac{p_{s',t}^g}{\gamma^g} \right) \ln \left(\frac{p_{s,t}^g \kappa_{s',t}^g}{p_{s',t}^g \kappa_{s,t}^g} \right)}{\sum_{s'} p_{s',t}^g}$$

which is the expression for the import demand function in the main text.

Table A1 - List of Source Countries

Afghanistan	Dominican Rep	Libya	Serbia
Albania	Ecuador	Liechtenstein	Serbia Pre-2009
Algeria	Egypt	Lithuania	Serbia/Monteneg
Andorra	El Salvador	Luxembourg	Seychelles
Angola	Eq Guinea	Macao	Sierra Leone
Anguilla	Eritrea	Macedonia	Singapore
Antigua Barbuda	Estonia	Madagascar	Sint Maarten
Argentina	Ethiopia	Malawi	Slovak Republic
Armenia	F St Micronesia	Malaysia	Slovenia
Aruba	Falkland Is	Maldives Is	Solomon Is
Australia	Faroe Islands	Mali	Somalia
Austria	Fiji	Malta	South Africa
Azerbaijan	Finland	Marshall Is	South Sudan
Bahamas	Fr Polynesia	Martinique	Spain
Bahrain	Fr S & Ant land	Mauritania	Sri Lanka
Bangladesh	France	Mauritius	St Helena
Barbados	French Guiana	Mayotte	St Kitts-Nevis
Belarus	Gabon	Mexico	St Lucia Is
Belgium	Gambia	Moldova	St Pierre & Miq
Belize	Gaza Strip	Monaco	St Vinc & Gren
Benin	Georgia	Mongolia	Sudan
Bermuda	Germany	Montenegro	Sudan prior2011
Bhutan	Ghana	Montserrat Is	Suriname
Bolivia	Gibraltar	Morocco	Svalbard,May Is
Bosnia-Hercegov	Greece	Mozambique	Swaziland
Botswana	Greenland	Namibia	Sweden
Br Virgin Is	Grenada Is	Nauru	Switzerland
Br Indian O Ter	Guadeloupe	Nepal	Syria
Brazil	Guatemala	Netherlands	Taiwan
Brunei	Guinea	Netherlands Ant	Tajikistan
Bulgaria	Guinea-Bissau	New Caledonia	Tanzania
Burkina Faso	Guyana	New Zealand	Thailand
Burma (Myanmar)	Haiti	Nicaragua	Timor-Leste
Burundi	Heard & McDn Is	Niger	Togo
Cambodia	Honduras	Nigeria	Tokelau Is
Cameroon	Hong Kong	Niue	Tonga
Canada	Hungary	Norfolk Is	Trin & Tobago
Cape Verde	Iceland	North Korea	Tunisia
Cayman Is	India	Oman	Turkey
Cen African Rep	Indonesia	Norway	Turkmenistan
Chad	Iran	Pakistan	Turks & Caic Is
Chile	Iraq	Palau	Tuvalu
China	Ireland	Panama	Uganda
Christmas Is	Israel	Papua New Guin	Ukraine
Cocos Is	Italy	Paraguay	United Arab Em
Colombia	Jamaica	Peru	United Kingdom
Comoros	Japan	Philippines	Uruguay
Congo (DROC)	Jordan	Pitcairn Is	Uzbekistan
Congo (ROC)	Kazakhstan	Poland	Vanuatu
Cook Is	Kenya	Portugal	Vatican City
Costa Rica	Kiribati	Qatar	Venezuela
Cote d'Ivoire	Korea	Reunion	Vietnam
Croatia	Kosovo	Romania	Wallis & Futuna
Cuba	Kuwait	Russia	West Bank
Curacao	Kyrgyzstan	Rwanda	Western Sahara
Cyprus	Laos	Samoa	Yemen
Czech Republic	Latvia	San Marino	Zambia
Denmark	Lebanon	Sao Tome & Prin	Zimbabwe
Djibouti	Lesotho	Saudi Arabia	
Dominica Is	Liberia	Senegal	

Table A2 - Expenditure Elasticities and Forecast Performance at the Good Level

SITC Code	Expenditure Elasticity	Forecast Performance	Sample Size	Good Name
11	1.004	0.032	722	BOVINE ANIMALS, LIVE
12	1.000	0.237	654	SHEEP AND GOATS, LIVE
13	1.000	0.516	676	SWINE, LIVE
14	1.000	0.276	676	POULTRY, LIVE (I.E. CHICKENS, DUCKS, GEESE, TURKEYS AND GUINEAS)
15	2.951	0.379	1834	HORSES, ASSES, MULES AND HINNIES, LIVE
19	0.465	0.111	3070	LIVE ANIMALS, N.E.S.
111	7.446	0.027	1051	MEAT OF BOVINE ANIMALS, FRESH OR CHILLED
112	4.718	-0.015	1061	MEAT OF BOVINE ANIMALS, FROZEN
121	68.451	0.123	836	MEAT OF SHEEP OR GOATS, FRESH, CHILLED OR FROZEN
122	12.700	0.091	1043	MEAT OF SWINE, FRESH, CHILLED OR FROZEN
123	7.531	0.338	774	MEAT AND EDIBLE OFFAL OF POULTRY (CHICKENS, DUCKS, GEESE, TURKEYS AND GUINEAS), FRESH, CHILLED, OR FROZEN
124	1.000	0.058	656	MEAT OF HORSES, ASSES, MULES, OR HINNIES, FRESH, CHILLED OR FROZEN
125	3.375	-0.133	1010	EDIBLE OFFAL OF BOVINE ANIMALS, SWINE, SHEEP, GOATS, HORSES, ASSES, MULES OR HINNIES, FRESH, CHILLED OR FROZEN
129	3.194	0.211	1077	MEAT AND EDIBLE MEAT OFFAL, FRESH, CHILLED OR FROZEN, N.E.S.
161	7.095	0.213	965	BACON, HAM AND OTHER DRIED, SALTED OR SMOKED MEAT OF SWINE
168	1.030	0.044	793	MEAT AND EDIBLE MEAT OFFAL, OTHER THAN MEAT OF SWINE, SALTED, IN BRINE, DRIED OR SMOKED; EDIBLE FLOURS AND MEALS OF MEAT OR MEAT OFFAL
171	0.949	0.198	1158	EXTRACTS AND JUICES OF MEAT, FISH OR CRUSTACEANS, MOLLUSCS OR OTHER AQUATIC INVERTEBRATES
172	2.689	0.271	1098	SAUSAGES AND SIMILAR PRODUCTS OF MEAT, MEAT OFFAL OR BLOOD; FOOD PREPARATIONS BASED ON THESE PRODUCTS
173	1.750	-0.116	848	LIVER OF ANY ANIMAL, PREPARED OR PRESERVED, N.E.S.
174	3.733	0.303	801	MEAT AND OFFAL (OTHER THAN LIVER) OF POULTRY (CHICKENS, DUCKS, GEESE, TURKEYS AND GUINEA FOWLS), PREPARED OR PRESERVED, N.E.S.
175	3.016	0.419	1098	MEAT AND OFFAL (OTHER THAN LIVER), OF SWINE, PREPARED OR PRESERVED, N.E.S.
176	5.269	0.235	1030	MEAT AND OFFAL (OTHER THAN LIVER), OF BOVINE ANIMALS, PREPARED OR PRESERVED, N.E.S.
179	1.616	0.127	767	MEAT OR MEAT OFFAL, N.E.S., PREPARED OR PRESERVED (INCLUDING PREPARATIONS OF BLOOD OF ANY ANIMAL)
221	1.204	0.047	914	MILK (INCLUDING SKIMMED MILK) AND CREAM, NOT CONCENTRATED OR SWEETENED
222	3.531	0.086	1204	MILK AND CREAM, CONCENTRATED OR SWEETENED
223	3.418	0.267	1762	YOGURT; BUTTERMILK, CURDLED, FERMENTED OR ACIDIFIED MILK AND CREAM; ICE CREAM
224	4.352	0.186	1062	WHEY; PRODUCTS CONSISTING OF NATURAL MILK CONSTITUENTS, N.E.S.
230	4.804	0.051	1840	BUTTER AND OTHER FATS AND OILS DERIVED FROM MILK
241	1.608	0.122	825	GRATED OR POWDERED CHEESE, OF ALL KINDS
242	2.349	0.336	1548	PROCESSED CHEESE, NOT GRATED OR POWDERED
243	2.447	0.466	1112	BLUE-VEINED CHEESE
249	4.893	0.210	2866	CHEESE, N.E.S.; CURD
251	1.014	0.137	1043	BIRDS' EGGS IN SHELL, FRESH, PRESERVED OR COOKED
252	1.370	-0.002	891	BIRDS' EGGS, NOT IN SHELL, AND EGG YOLKS
253	12.878	-0.027	756	EGG ALBUMIN
341	2.948	0.543	4004	FISH, FRESH (LIVE OR DEAD) OR CHILLED (EXCLUDING FILLETS AND MINCED FISH)
342	2.243	0.052	3396	FISH, FROZEN (EXCLUDING FILLETS AND MINCED FISH)
344	9.027	0.284	3423	FISH FILLETS, FROZEN
345	10.724	0.177	2822	FISH FILLETS, FRESH OR CHILLED AND OTHER FISH MEAT (WHETHER OR NOT MINCED), FRESH, CHILLED OR FROZEN
351	6.219	-0.144	1811	FISH, DRIED, SALTED OR IN BRINE, BUT NOT SMOKED
352	3.140	-0.115	1323	FISH SALTED BUT NOT DRIED OR SMOKED AND FISH IN BRINE
353	3.858	-0.153	1831	FISH (INCLUDING FILLETS), SMOKED, WHETHER OR NOT COOKED BEFORE OR DURING THE SMOKING PROCESS
354	1.872	0.210	1014	FISH LIVER AND ROES, DRIED, SMOKED, SALTED OR IN BRINE
355	1.220	0.403	752	FLOURS, MEALS AND PELLETS OF FISH, FIT FOR HUMAN CONSUMPTION
361	6.071	0.269	3429	CRUSTACEANS, FROZEN
362	17.075	-0.026	1970	CRUSTACEANS, OTHER THAN FROZEN, INCLUDING FLOURS, MEALS AND PELLETS OF CRUSTACEANS, FIT FOR HUMAN CONSUMPTION
363	4.834	-0.001	2666	MOLLUSCS AND AQUATIC INVERTEBRATES, FRSH, CHLD, FRZN, DRD, SLTD R IN BRINE; FLOURS, MEALS, PELLETS OF AQUATIC INVRTS OTH TH CRUSTACEANS HUM CONSUMPT
371	0.960	0.250	3404	FISH, PREPARED OR PRESERVED, N.E.S.; CAVIAR AND CAVIAR SUBSTITUTES PREPARED FROM FISH EGGS
372	7.704	0.092	2513	CRUSTACEANS, MOLLUSCS AND OTHER AQUATIC INVERTEBRATES, PREPARED OR PRESERVED, N.E.S.
411	4.203	0.241	716	DURUM WHEAT, UNMILLED
412	455.385	-0.105	856	WHEAT (INCLUDING SPELT) AND MESLIN, UNMILLED, N.E.S.
421	NaN	NaN	624	RICE IN THE HUSK (PADDY OR ROUGH RICE)
422	4.310	-0.139	1194	RICE HUSKED BUT NOT FURTHER PREPARED (CARGO RICE OR BROWN RICE)
423	37.070	0.082	1881	RICE, SEMI-MILLED OR WHOLLY MILLED, WHETHER OR NOT POLISHED, GLAZED, PARBOILED OR CONVERTED (INCLUDING BROKEN RICE)
430	438.977	-0.057	783	BARLEY, UNMILLED
441	2.195	0.151	932	MAIZE (CORN) SEED
449	14.549	-0.011	1002	MAIZE (NOT INCLUDING SWEET CORN) UNMILLED, EXCEPT SEED
451	1.000	0.445	676	RYE, UNMILLED
452	3.789	0.263	811	OATS, UNMILLED
453	1.000	0.024	637	GRAIN SORGHUM, UNMILLED
459	3.262	0.122	1226	BUCKWHEAT, MILLET, CANARY SEED AND OTHER CEREALS, UNMILLED, N.E.S.
461	19.781	0.381	1812	FLOUR OF WHEAT OR OF MESLIN
462	15.049	0.259	1043	GROATS, MEAL AND PELLETS, OF WHEAT
471	9.133	-0.050	1794	CEREAL FLOURS (OTHER THAN OF WHEAT OR MESLIN)
472	29.366	0.050	1316	CEREAL GROATS, MEAL AND PELLETS (OTHER THAN OF WHEAT)
481	20.226	-0.032	3288	CEREAL GRAINS, WORKED OR PREPARED IN A MANNER NOT ELSEWHERE SPECIFIED (INCLUDING PREPARED BREAKFAST FOODS)
482	7.228	0.366	937	MALT, WHETHER OR NOT ROASTED (INCLUDING MALT FLOUR)
483	15.244	0.119	2885	MACARONI, SPAGHETTI AND SIMILAR PRODUCTS (PASTA UNCOOKED, NOT STUFFED OR OTHERWISE PREPARED)
484	9.832	0.333	4953	BREAD, PASTRY, CAKES, BISCUITS AND OTHER BAKERS' WARES; COMMUNION WAFERS, EMPTY CACHETS FOR PHARMACEUTICAL USE, SEALING WAFERS, RICE PAPER, ETC.
485	40.764	0.237	2079	MIXES AND DOUGHS FOR THE PREPARATION OF BAKERS' WARES, INCLUDING BREAD, PASTRY, CAKES, AND BISCUITS
541	1.000	-0.066	692	POTATOES, FRESH OR CHILLED (NOT INCLUDING SWEET POTATOES)
542	8.805	0.011	2722	LEGUMINOUS VEGETABLES, DRIED, SHELLED, WHETHER OR NOT SKINNED OR SPLIT
544	25.599	0.114	948	TOMATOES, FRESH OR CHILLED
545	2.952	-0.029	2840	FRESH OR CHILLED VEGETABLES, N.E.S.
546	8.408	0.228	2409	VEGETABLES (UNCOOKED OR COOKED BY STEAMING OR BOILING IN WATER), FROZEN
547	3.654	0.261	1611	VEGETABLES PROVISIONALLY PRESERVED (E.G., BY SULPHUR DIOXIDE GAS, IN BRINE, IN SULPHUR WATER OR OTHER PRESERVATIVE SOLUTIONS), INEDIBLE IN THAT STATE
548	2.924	0.005	2649	VEGETABLE PRODUCTS, ROOTS AND TUBERS, CHIEFLY FOR HUMAN FOOD, N.E.S., FRESH OR DRIED
561	2.904	0.009	2577	VEGETABLES, DRIED (EXCLUDING LEGUMINOUS VEGETABLES), WHOLE, CUT, SLICED, BROKEN OR IN POWDER, BUT NOT FURTHER PREPARED
564	2.758	0.005	2139	FLOUR, MEAL, FLAKES, GRANULES AND PELLETS OF POTATOES, FRUITS AND VEGETABLES, N.E.S.
566	50.815	-0.001	2070	VEGETABLES, PREPARED OR PRESERVED OTHERWISE THAN BY VINEGAR OR ACETIC ACID, N.E.S., FROZEN
567	8.088	0.184	4181	VEGETABLES, PREPARED OR PRESERVED, N.E.S.
571	2.048	0.016	959	ORANGES, MANDARINS, CLEMENTINES AND SIMILAR CITRUS HYBRIDS, FRESH OR DRIED
572	20.086	0.328	1271	CITRUS FRUIT, N.E.S., FRESH OR DRIED
573	3.071	0.197	1409	BANANAS (INCLUDING PLANTAINS), FRESH OR DRIED
574	1.024	0.096	800	APPLES, FRESH
575	1.907	0.350	1121	GRAPES, FRESH OR DRIED
576	1.013	-0.004	778	FIGS, FRESH OR DRIED
577	7.022	0.443	2623	EDIBLE NUTS (EXCLUDING NUTS CHIEFLY USED FOR THE EXTRACTION OF OIL), FRESH OR DRIED, WHETHER OR NOT SHELLED OR PEELED
579	8.774	0.265	3050	FRUIT, FRESH OR DRIED, N.E.S.
581	2.740	0.066	3490	JAMS, FRUIT JELLIES, MARMALADES, FRUIT OR NUT PUREE AND FRUIT OR NUT PASTES, BEING COOKED PREPARATIONS, NOT INCLUDING HOMOGENIZED PREPARATIONS
582	2.271	0.126	1424	FRUIT AND NUTS, PROVISIONALLY PRESERVED; PEEL OF CITRUS FRUIT OR MELONS
583	6.100	0.385	2166	FRUIT AND NUTS, UNCOOKED OR COOKED BY STEAMING OR BOILING IN WATER, FROZEN, WHETHER OR NOT CONTAINING ADDED SUGAR OR OTHER SWEETENING MATTER
589	10.607	0.680	4114	FRUITS, NUTS, AND OTHER EDIBLE PARTS OF PLANTS OTHERWISE PREPARED OR PRESERVED, N.E.S., WHETHER OR NOT CONTAINING ADDED SWEETENING MATTER OR SPIRIT
591	25.869	0.146	1460	ORANGE JUICE, UNFERMENTED AND NOT CONTAINING ADDED SPIRIT
592	1.859	-0.061	812	GRAPEFRUIT JUICE, UNFERMENTED AND NOT CONTAINING ADDED SPIRIT
593	4.722	-0.142	1287	JUICE OF ANY SINGLE CITRUS FRUIT, OTHER THAN OF ORANGE OR GRAPEFRUIT, UNFERMENTED AND NOT CONTAINING ADDED SPIRIT
599	10.475	0.328	3863	JUICE OF ANY SINGLE FRUIT (OTHER THAN CITRUS) AND VEGETABLE; MIXTURES OF FRUIT AND VEGETABLE JUICE, UNFERMENTED AND NOT CONTAINING ADDED SPIRIT
611	1.235	-0.179	1499	SUGARS, BEET OR CANE, RAW, IN SOLID FORM, NOT CONTAINING ADDED FLAVORING OR COLORING MATTER
612	15.356	0.187	1793	BEET OR CANE SUGAR, N.E.S., AND CHEMICALLY PURE SUCROSE IN SOLID FORM
615	0.563	-0.032	1396	MOLASSES RESULTING FROM THE EXTRACTION AND REFINING OF SUGAR
616	9.869	0.154	2443	NATURAL HONEY
619	10.008	0.010	2274	SUGARS, N.E.S. (PURE LACTOSE, MALTULOSE, GLUCULOSE, FRUCTULOSE, ETC.), IN SOLID FORM; SUGAR SYRUPS WITH NO ADDED FLAVOR OR COLOR; ARTIFICIAL HONEY; CARAMEL
621	3.387	0.326	1688	FRUIT, NUTS, FRUIT-PEEL AND OTHER PARTS OF PLANTS, PRESERVED BY SUGAR OR OTHER SWEETENING MATTER (DRAINED, GLACE OR CRYSTALLIZED)
622	13.031	0.240	4160	SUGAR CONFECTIONERY (INCLUDING WHITE CHOCOLATE) NOT CONTAINING COCOA

Table A2 - Expenditure Elasticities and Forecast Performance at the Good Level

SITC Code	Expenditure Elasticity	Forecast Performance	Sample Size	Good Name
711	6.883	0.032	2860	COFFEE, NOT ROASTED, WHETHER OR NOT DECAFFEINATED
712	12.071	0.117	3175	COFFEE, ROASTED
713	9.793	0.009	2245	EXTRACTS, ESSENCES AND CONCENTRATES OF COFFEE AND PREPARATIONS WITH A COFFEE BASIS; COFFEE SUBSTITUTES AND EXTRACT, ESSENCE AND CONCENTRATES THEREOF
721	6.718	-0.224	1330	COCOA BEANS, WHOLE OR BROKEN, RAW OR ROASTED
722	5.437	-0.005	1620	COCOA POWDER NOT CONTAINING ADDED SUGAR OR OTHER SWEETENING MATTER
723	1.656	0.175	1532	COCOA PASTE, WHETHER OR NOT DEFATTED
724	3.586	-0.137	1782	COCOA BUTTER, FAT OR OIL
725	1.078	-0.212	720	COCOA SHELLS, HUSKS, SKINS AND OTHER COCOA WASTE
731	8.770	-0.036	1063	COCOA POWDER CONTAINING ADDED SUGAR OR OTHER SWEETENING MATTER
732	19.925	0.507	1564	FOOD PREP NES, CONTAINING COCOA, IN BLOCKS, SLABS OR BARS OVER 2 KG OR IN LIQUID, PASTE, POWDER, GRANULAR OR OTHER BULK FORM IN CONTAINERS OVER 2 KG
733	13.458	0.342	2662	FOOD PREPARATIONS, N.E.S., CONTAINING COCOA, IN BLOCKS, SLABS OR BARS
739	9.989	0.574	3291	FOOD PREPARATIONS CONTAINING COCOA, N.E.S.
741	4.949	0.242	2962	TEA, WHETHER OR NOT FLAVORED
743	2.834	0.133	1876	MATE; EXTRACTS, ESSENCES AND CONCENTRATES OF TEA OR MATE, AND PREPARATIONS WITH A BASIS OF TEA, MATE, OR THEIR EXTRACTS, ESSENCES OR CONCENTRATES
751	8.558	0.232	2760	PEPPER OF THE GENUS PIPER; FRUITS OF THE GENUS CAPSICUM OR OF THE GENUS PIMENTA, DRIED OR CRUSHED OR GROUND
752	2.283	0.540	4002	SPICES (EXCEPT PEPPER AND PIMENTO)
811	1.306	0.184	1000	HAY AND FODDER, GREEN OR DRY
812	0.290	-0.050	1057	BRAN, SHARPS AND OTHER RESIDUES, WHETHER OR NOT IN PELLETS, DERIVED FROM SIFTING, MILLING OR OTHER WORKING OF CEREALS OR OF LEGUMINOUS PLANTS
813	74.337	0.131	849	OIL-CAKE AND OTHER SOLID RESIDUES (EXCEPT DREGS) RESULTING FROM THE EXTRACTION OF FATS OR OILS FROM OILSEEDS, OLEAGINOUS FRUITS AND GERMS OF CEREALS
814	1.962	-0.113	1205	FLOURS, MEALS AND PELLETS OF MEAT OR MEAT OFFAL, OF FISH OR OF CRUSTACEANS, MOLLUSCS OR OTHER AQUATIC INVERTEBRATES, INEDIBLE; GREAVES
815	4.935	0.042	990	RESIDUES OF STARCH MANUFACTURE, BEET-PULP, BAGASSE, ETC. WASTE OF SUGAR MANUFACTURE, BREWING OR DISTILLING DREGS AND WASTE, WHETHER OF NOT IN PELLETS
819	0.096	0.244	2451	FOOD WASTES AND PREPARED ANIMAL FEEDS, N.E.S.
910	9.742	0.105	2123	MARGARINE; EDIBLE PREPARATIONS OF ANIMAL OR VEGETABLE FATS OR OILS OR OF FRACTIONS OF DIFFERENT SUCH FATS OR OILS, OTHER THAN THOSE OF HEADING 431.2
981	5.557	-0.064	940	HOMOGENIZED FOOD PREPARATIONS
984	13.544	0.394	3965	SAUCES AND PREPARATIONS THEREFOR; MIXED CONDIMENTS AND MIXED SEASONINGS; MUSTARD FLOUR AND MEAL AND PREPARED MUSTARD; VINEGAR AND VINEGAR SUBSTITUTES
985	5.222	-0.238	2800	SOUPS AND BROTHS AND PREPARATIONS THEREFOR
986	1.915	0.283	2194	YEASTS (ACTIVE OR INACTIVE); OTHER SINGLE-CELL MICRO-ORGANISMS, DEAD (BUT NOT INCLUDING VACCINES OF HEADING 541.63); PREPARED BAKING POWDERS
989	4.910	0.400	4629	FOOD PREPARATIONS, N.E.S.
1110	4.536	0.492	4644	NONALCOHOLIC BEVERAGES, N.E.S.
1121	59.056	0.467	2912	WINE OF FRESH GRAPES (INCLUDING FORTIFIED WINE); GRAPE MUST IN FERMENTATION OR WITH FERMENTATION ARRESTED
1122	5.087	0.329	1592	FERMENTED BEVERAGES, N.E.S. (E.G., CIDER, PERRY AND MEAD); MIXT OF FERMENTD BEVERAGES AND MIXT OF FERMENTD BEVERAGES AND NON-ALCOHOLIC BEV, N.E.S.
1123	58.831	0.416	3728	BEER MADE FROM MALT (INCLUDING ALE, STOUT AND PORTER)
1124	44.691	0.338	4202	SPIRITS FOR BEVERAGES (EXCEPT ETHYL ALCOHOL 80% OR MORE ALCOHOL BY VOLUME); LIQUEURS ETC. N.E.S.
1211	2.482	-0.022	1569	TOBACCO, NOT STEMMED/STRIPPED
1212	3.221	0.035	1816	TOBACCO, WHOLLY OR PARTLY STEMMED/STRIPPED
1213	3.561	0.094	1247	TOBACCO REFUSE
1221	8.310	-0.064	1647	CIGARS, CHEROOTS AND CIGARILLOS, CONTAINING TOBACCO
1222	3.170	-0.098	1853	CIGARETTES CONTAINING TOBACCO
1223	1.328	0.251	1432	MANUFACTURED TOBACCO, N.E.S. (INCLUDING SMOKING AND CHEWING TOBACCO, SNUFF); TOBACCO EXTRACTS AND ESSENCES
2111	6.614	-0.528	734	BOVINE OR EQUINE HIDES AND SKINS (EXCEPT OF HEADING 211.2), RAW (FRESH, SALTED, DRIED, ETC.), WHETHER OR NOT DEHAIRIED OR SPLIT
2112	4.250	-0.124	1415	WHOLE BOVINE HIDES AND SKINS, WEIGHING PER SKIN NOT OVER 8 KG DRIED, OR 10 KG DRY-SALTED, OR 14 KG WHEN FRESH, WET-SALTED OR OTHERWISE PRESERVED
2114	1.000	-0.250	673	GOAT AND KID SKINS (EXCEPT YEMEN, MONGOLIAN OR TIBETAN GOAT OR KID SKINS), RAW (FRESH, SALTED, DRIED, ETC.), WHETHER OR NOT DEHAIRIED OR SPLIT
2116	2.312	0.108	720	SHEEP AND LAMB SKINS (EXCEPT OF ASTRAKHAN, BROADTAIL, CARACUL, PERSIAN, ETC. LAMBS, INDIAN, CHINESE, MONGOLIAN OR TIBETAN LAMBS) WITH WOOL ON, RAW
2117	1.178	0.299	787	SHEEP AND LAMB SKINS WITHOUT WOOL ON, RAW (FRESH, SALTED, DRIED, ETC.), WH ETHER OR NOT SPLIT
2119	2.061	0.141	1136	HIDES AND SKINS, N.E.S., RAW; WASTE AND USED LEATHER
2121	5.963	0.231	1072	MINK SKINS, RAW, WHOLE, WITH OR WITHOUT HEAD, TAIL OR PAWS
2122	2.007	0.117	1158	RAW FURSKINS, OTHER THAN OF MINK, WHOLE
2123	NaN	NaN	624	HEADS, TAILS, PAWS AND OTHER PIECES OR CUTTINGS OF FURSKINS, SUITABLE FOR FURRIERS' USE
2221	1.335	0.003	720	GROUNDNUTS (PEANUTS), NOT ROASTED OR OTHERWISE COOKED, WHETHER OR NOT SHELLED OR BROKEN
2222	3.870	-0.105	930	SOYBEANS
2223	1.000	-0.013	683	COTTONSEEDS
2224	3.264	0.260	1123	SUNFLOWER SEEDS
2225	7.733	0.266	1403	SESAME (SESAMUM) SEEDS
2226	347.179	0.162	768	RAPE, COLZA AND MUSTARD SEEDS
2227	1.000	-0.234	667	SAFFLOWER SEEDS
2231	1.000	-0.301	642	COPRA
2232	1.000	-0.215	660	PALM NUTS AND PALM KERNELS
2234	23.531	0.109	843	FLAXSEED OR LINSEED
2235	NaN	NaN	624	CASTOR OIL SEEDS
2237	3.634	0.394	1545	OIL SEEDS AND OLEAGINOUS FRUITS, N.E.S.
2239	3.482	0.091	1045	FLOURS AND MEALS OF OIL SEEDS OR OLEAGINOUS FRUITS (EXCLUDING MUSTARD FLOUR), WHETHER OR NOT DEFATTED AND/OR REFATTED WITH THEIR ORIGINAL OILS
2311	1.084	0.060	1339	NATURAL RUBBER LATEX, WHETHER OR NOT PREVULCANIZED
2312	9.520	0.245	1731	NATURAL RUBBER (OTHER THAN LATEX), IN PRIMARY FORMS OR IN PLATES, ETC.
2313	1.034	0.196	782	BALATA, GUTTA-PERCHA, GUAYULE, CHICLE AND SIMILAR NATURAL GUMS, IN PRIMARY FORMS OR IN PLATES, SHEETS OR STRIP
2321	0.920	0.134	2115	SYNTHETIC RUBBER AND FACTICE FROM OILS, INCLUDING MIXTURES CONTAINING NATURAL RUBBER, IN PRIMARY FORMS, OR IN PLATES, SHEETS OR STRIP
2322	1.970	0.215	1565	RECLAIMED RUBBER; WASTE AND SCRAP OF UNHARDENED RUBBER
2440	4.951	0.339	739	CORK, NATURAL, RAW AND WASTE (INCLUDING NATURAL CORK IN BLOCKS OR SHEETS)
2450	3.031	-0.023	1533	FUEL WOOD (EXCLUDING WOOD WASTE) AND WOOD CHARCOAL
2461	1.556	0.264	799	WOOD IN CHIPS OR PARTICLES
2462	63.938	0.072	987	SAWDUST AND WOOD WASTE AND SCRAP, WHETHER OR NOT AGGLOMERATED IN LOGS, BRIQUETTES, PELLETS OR SIMILAR FORMS
2473	25.834	0.188	831	WOOD IN THE ROUGH (WHETHER OR NOT STRIPPED OF BARK OR SAPWOOD) OR ROUGHLY SQUARED, TREATED WITH PAINT, STAINS OR OTHER PRESERVATIVES
2474	13.814	0.085	1079	CONIFEROUS WOOD, IN THE ROUGH (STRIPPED OR NOT OF BARK OR SAPWOOD), OR ROUGHLY SQUARED, UNTREATED WITH PAINT, STAIN OR OTHER PRESERVATIVE
2475	6.506	0.287	1354	NONCONIFEROUS WOOD, IN THE ROUGH (WHETHER OR NOT STRIPPED OF BARK OR SAPWOOD), OR ROUGHLY SQUARED, BUT NOT TREATED WITH PAINT, STAIN OR PRESERVATIVES
2481	5.407	0.255	725	RAILWAY OR TRAMWAY SLEEPERS (CROSS-TIES) OF WOOD
2482	48.494	0.406	2204	WOOD OF CONIFEROUS SPECIES, SAWN OR CHIPPED LENGTHWISE, SLICED OR PEELED, WHETHER OR NOT PLANED, SANDED OR FINGER-JOINTED, OVER 6 MM THICK
2483	0.838	0.397	2285	CONIFEROUS WOOD (INCLUDING STRIPS ETC. FOR PARQUET FLOORING, UNASSEMBLED), CONTINUOUSLY SHAPED (GROOVED, ETC.) ALONG ANY OF ITS EDGES OR FACES
2484	4.915	0.711	3518	WOOD OF NONCONIFEROUS SPECIES, SAWN OR CHIPPED LENGTHWISE, SLICED OR PEELE D, WHETHER OR NOT PLANED, SANDED OR FINGER-JOINTED, OVER 6 MM THICK
2485	0.746	0.003	2701	NONCONIFEROUS WOOD (INCLUDING STRIPS ETC. FOR PARQUET FLOORING, UNASSEMBLED) CONTINUOUSLY SHAPED (GROOVED, ETC.) ALONG ANY OF ITS EDGES OR FACES
2511	52.317	0.266	819	WASTE AND SCRAP OF PAPER OR PAPERBOARD
2512	1.825	0.050	707	MECHANICAL WOOD PULP
2513	2.677	0.126	807	CHEMICAL WOOD PULP, DISSOLVING GRADES
2514	2.621	0.396	931	CHEMICAL WOOD PULP, SODA OR SULFATE, OTHER THAN DISSOLVING GRADES, UNBLEACHED
2515	21.184	0.518	960	CHEMICAL WOOD PULP, SODA OR SULFATE, SEMIBLEACHED OR BLEACHED (OTHER THAN DISSOLVING GRADES)
2516	21.516	0.235	742	CHEMICAL WOOD PULP, SULFITE (OTHER THAN DISSOLVING GRADES)
2519	8.479	0.215	1104	SEMICHEMICAL WOOD PULP AND PULPS OF OTHER FIBROUS CELLULOSIC MATERIAL
2613	1.435	-0.076	732	RAW SILK (NOT THROWN)
2614	1.504	0.059	810	SILKWORM COCOONS AND SILK WASTE
2631	2.546	-0.053	720	COTTON (OTHER THAN LINTERS), NOT CARDED OR COMBED
2632	1.161	0.210	759	COTTON LINTERS
2633	1.218	0.015	1181	COTTON WASTE (INCLUDING YARN WASTE AND GARNETTED STOCK)
2634	1.100	0.049	833	COTTON, CARDED OR COMBED
2641	2.097	-0.114	706	JUTE AND OTHER TEXTILE BAST FIBERS, RAW OR RETTED
2649	1.458	0.052	817	JUTE AND OTHER TEXTILE BAST FIBERS, N.E.S. PROCESSED BUT NOT SPUN; TOW AND WASTE OF THESE FIBERS (INCLUDING YARN WASTE AND GARNETTED STOCK)
2651	0.553	0.201	927	FLAX, RAW OR PROCESSED BUT NOT SPUN; FLAX TOW AND WASTE (INCLUDING YARN WA STE AND GARNETTED STOCK)
2652	1.218	-0.075	761	TRUE HEMP (CANNABIS SATIVA L), RAW OR PROCESSED BUT NOT SPUN; TOW AND WASTE OF TRUE HEMP (INCLUDING YARN WASTE AND GARNETTED STOCK)
2654	1.295	0.325	708	SISAL AND OTHER GENUS AGAVE TEXTILE FIBERS, RAW OR PROCESSED BUT NOT SPUN; TOW & WASTE OF THESE FIRERS (INCLUDING YARN WASTE AND GARNETTED STOCK)
2655	1.000	0.141	667	ABACA (MANILA HEMP OR MUSA TEXTILIS NEE), RAW OR PROCESSED BUT NOT SPUN; TOW, NOILS AND WASTE OF THE FIBERS (INCLUDING YARN WASTE AND GARNETTED STOCK)
2657	2.315	0.293	830	COCONUT FIBERS (COIR), RAW OR PROCESSED BUT NOT SPUN; TOW; NOILS AND WASTE OF THESE FIBERS (INCLUDING YARN WASTE AND GARNETTED STOCK)
2658	1.000	0.096	908	VEGETABLE TEXTILE FIBERS, N.E.S., RAW OR PROCESSED BUT NOT SPUN; TOW, NOILS AND WASTE OF THESE FIBERS (INCLUDING YARN WASTE AND GARNETTED STOCK)
2665	3.395	0.396	1957	SYNTHETIC STAPLE FIBERS, NOT CARDED, COMBED OR OTHERWISE PROCESSED FOR SPINNING
2666	1.323	0.448	1277	SYNTHETIC FILAMENT TOW
2667	1.196	-0.081	1228	SYNTHETIC STAPLE FIBERS, CARDED, COMBED OR OTHERWISE PROCESSED FOR SPINNING
2671	1.783	0.200	1570	ARTIFICIAL FIBERS SUITABLE FOR SPINNING
2672	1.809	0.334	1101	WASTE (INCLUDING NOILS, YARN WASTE AND GARNETTED STOCK), OF MANMADE FIBERS

Table A2 - Expenditure Elasticities and Forecast Performance at the Good Level

SITC Code	Expenditure Elasticity	Forecast Performance	Sample Size	Good Name
2681	3.682	-0.027	868	WOOL, GREASY (INCLUDING FLEECE-WASHED WOOL), NOT CARDED OR COMBED
2682	1.145	0.292	1008	WOOL, DEGREASED, NOT CARDED OR COMBED
2683	0.995	0.033	906	FINE ANIMAL HAIR, NOT CARDED OR COMBED
2685	1.033	0.278	806	HORSEHAIR AND OTHER COARSE ANIMAL HAIR, NOT CARDED OR COMBED
2686	1.005	0.049	989	WASTE OF WOOL OR OF FINE OR COARSE ANIMAL HAIR, OTHER THAN HORSEHAIR (INCLUDING YARN WASTE AND GARNETTED STOCK)
2687	1.034	0.022	1239	WOOL OR OTHER ANIMAL HAIR, FINE OR COARSE, CARDED OR COMBED (INCLUDING COMBED WOOL IN FRAGMENTS)
2690	0.949	0.083	2476	WORN CLOTHING AND OTHER WORN TEXTILE ARTICLES; RAGS
2721	1.604	0.095	1230	ANIMAL OR VEGETABLE FERTILIZERS, WHETHER OR NOT MIXED, ETC.; FERTILIZERS PRODUCED BY MIXING OR CHEM TREATMENT OF ANIMAL OR VEG PRODUCTS (IMPORTS ONLY)
2722	7.241	0.112	749	SODIUM NITRATE, EXCEPT THOSE OF DIVISION 56, (IMPORTS ONLY)
2723	46.274	0.293	781	NATURAL CALCIUM PHOSPHATES, NATURAL ALUMINUM CALCIUM PHOSPHATES AND PHOSPHATIC CHALK, (IMPORTS ONLY)
2724	1.000	-0.681	639	CARNALLITE, SLYVITE, AND OTHER CRUDE NATURAL POTASSIUM SALTS, (IMPORTS ONLY)
2731	3.333	0.356	1869	BUILDING OR MONUMENTAL (DIMENSION) STONE, NOT FURTHER WORKED THAN ROUGHLY TRIMMED OR CUT INTO BLOCKS OR SLABS OF A SQUARE OR RECTANGULAR SHAPE
2732	10.583	0.560	1365	GYPNUM, PLASTERS, LIMESTONE FLUX AND CALCAREOUS STONE COMMONLY USED FOR THE MANUFACTURE OF LIME AND CEMENT
2733	3.172	0.406	1577	SANDS, NATURAL, OF ALL KINDS, WHETHER OR NOT COLORED (OTHER THAN METAL BEARINGS SANDS OF DIVISION 28)
2734	7.670	0.141	1543	PEBBLES, GRAVEL, BROKEN OR CRUSHED STONE FOR SPECIFIC USES; MACADAM OF SLAG, DROSS ETC; TARRED MACADAM; CHIPS, ETC. FROM MONUMENT AND BUILDING STONE
2741	3.042	0.121	1627	SULFUR OF ALL KINDS (OTHER THAN SUBLIMED, PRECIPITATED AND COLLOIDAL SULFUR)
2742	2.820	0.182	745	IRON PYRITES, UNROASTED
2771	0.370	0.379	1705	INDUSTRIAL DIAMONDS, SORTED, WHETHER OR NOT WORKED
2772	0.144	0.155	2023	NATURAL ABRASIVES, N.E.S.
2782	0.122	0.359	2069	CLAYS AND OTHER REFRACTORY MINERALS, N.E.S.
2783	4.794	-0.023	2195	SODIUM CHLORIDE, PURE & COMM SALT (INCL TABLE SALT/DNTURD SALT), WHETH OR NT IN AQUEOUS SOLUTION/CONTG ADDED ANTI-CKNG OR FREE-FLOWING AGTS; SEA WATER
2784	1.000	0.307	684	ASBESTOS
2785	0.345	0.313	1532	QUARTZ, MICA, FELSPAR, FLUORSPAR, CRYOLITE AND CHIOLITE
2786	0.868	0.274	1309	SLAG, DROSS, SCALINGS AND SIMILAR WASTE, N.E.S.
2789	0.282	0.096	2267	MINERALS, CRUDE, N.E.S
2814	NaN	NaN	624	ROASTED IRON PYRITES (PYRITES CINDERS), WHETHER OR NOT AGGLOMERATED
2815	1.713	0.059	865	IRON ORE AND CONCENTRATES, NOT AGGLOMERATED
2816	1.205	-0.106	738	IRON ORE AGGLOMERATES (SINTERS, PELLETS, BRIQUETTES, ETC.)
2821	16.967	0.245	786	WASTE AND SCRAP OF CAST IRON
2822	34.503	0.281	1671	WASTE AND SCRAP OF ALLOY STEEL
2823	15.965	0.058	1159	FERROUS METAL WASTE AND SCRAP, EXCEPT OF CAST IRON AND ALLOY STEEL
2831	1.000	-0.121	665	COPPER ORES AND CONCENTRATES
2832	1.000	-0.207	670	COPPER MATTES; CEMENT COPPER (PRECIPITATED COPPER)
2841	NaN	NaN	624	NICKEL ORES AND CONCENTRATES
2842	4.132	0.229	748	NICKEL MATTES, NICKEL OXIDE SINTERS AND OTHER INTERMEDIATE PRODUCTS OF NICKEL METALLURGY
2851	1.329	0.308	1042	ALUMINUM ORES AND CONCENTRATES
2852	1.704	0.426	1737	ALUMINA (ALUMINUM OXIDE), OTHER THAN ARTIFICIAL CORUNDUM
2861	1.000	-0.128	706	URANIUM ORES AND CONCENTRATES
2862	NaN	NaN	624	THORIUM ORES AND CONCENTRATES
2874	1.000	-0.566	638	LEAD ORES AND CONCENTRATES
2875	1.304	0.316	764	ZINC ORES AND CONCENTRATES
2876	NaN	NaN	624	TIN ORES AND CONCENTRATES
2877	5.103	0.457	852	MANGANESE ORES AND CONCENTRATES (INCLUDING MANGANIFEROUS IRON ORES AND CONCENTRATES WITH A MANGANESE CONTENT OF 20% OR MORE CALCULATED ON DRY WEIGHT)
2878	1.882	0.112	1355	ORES AND CONCENTRATES OF MOLYBDENUM, NIOBIUM, TANTALUM, TITANIUM, VANADIUM AND ZIRCONIUM
2879	1.078	-0.011	1342	NONFERROUS BASE METAL ORES AND CONCENTRATES, N.E.S.
2881	2.611	0.376	1508	ASH AND RESIDUES (OTHER THAN FROM THE MANUFACTURE OF IRON AND STEEL) CONTAINING METALS AND METAL COMPOUNDS, N.E.S.
2882	8.813	0.530	3508	NONFERROUS BASE METAL WASTE AND SCRAP, N.E.S.
2891	5.525	0.101	754	ORES AND CONCENTRATES OF PRECIOUS METALS
2892	0.474	0.332	2425	WASTE AND SCRAP OF PRECIOUS METAL (OTHER THAN GOLD) OR OF METAL CLAD WITH PRECIOUS METAL (OTHER THAN GOLD)
2911	0.327	0.485	2024	BONES, HORNS, IVORY, HOOVES, CLAWS, CORAL, SHELLS AND SIMILAR PRODUCTS
2919	0.517	0.083	3126	MATERIALS OF ANIMAL ORIGIN, N.E.S.
2922	1.321	0.086	1796	LAC; NATURAL GUMS, RESINS, GUM RESINS, AND BALMS
2923	1.022	-0.060	764	VEGETABLE MATERIALS USED PRIMARILY FOR PLAITING, INCLUDING BAMBOO, RATTAN, REEDS, RUSHES, OSTER, RAFFIA, PREPARED CEREAL STRAW, AND LIME BARK
2924	0.580	-0.265	3988	PLANTS AND PARTS OF PLANTS USED PRIMARILY IN PERFUMERY, PHARMACY, OR FOR INSECTICIDAL, FUNGICIDAL OR SIMILAR PURPOSES, FRESH OR DRIED
2925	0.494	0.273	2732	SEEDS, FRUIT AND SPORES, N.E.S., OF A KIND USED FOR SOWING
2926	1.199	0.336	2865	BULBS, TUBERS, AND RHIZOMES OF FLOWERING OR OF FOLIAGE PLANTS; CUTTINGS, SLIPS, LIVE TREES AND OTHER PLANTS
2927	2.576	0.507	1222	CUT FLOWERS AND FOLIAGE
2929	0.478	0.141	3753	MATERIALS OF VEGETABLE ORIGIN, N.E.S.
3211	1.060	0.310	710	ANTHRACITE, PULVERIZED OR NOT, BUT NOT AGGLOMERATED
3212	2.059	0.190	954	COAL (EXCEPT ANTHRACITE), PULVERIZED OR NOT, BUT NOT AGGLOMERATED
3221	1.000	0.186	672	BRIQUETTES, OVOIDS AND SIMILAR SOLID FUELS MANUFACTURED FROM COAL
3222	2.776	0.309	713	LIGNITE (EXCLUDING JET), PULVERIZED OR NOT
3223	35.005	0.254	1031	PEAT (INCLUDING PEAT LITTER), AGGLOMERATED OR NOT
3250	1.522	0.282	844	COKE AND SEMICOKES (INCLUDING CHAR) OF COAL, OF LIGNITE OR OF PEAT, AGGLOMERATED OR NOT; RETORT CARBON
3330	4.437	-0.384	2306	PETROLEUM OILS AND OILS FROM BITUMINOUS MINERALS, CRUDE
3341	2.030	-0.591	853	GASOLINE (MOTOR SPIRIT) AND OTHER LIGHT OILS
3342	1.513	-0.971	841	KEROSENE AND OTHER MEDIUM OILS (NOT INCLUDING GAS OILS)
3343	1.343	0.700	648	GAS OILS
3344	1.653	-0.694	916	FUEL OILS, N.E.S.
3345	2.353	-0.098	821	LUBRICATING OILS FROM PETROLEUM OR BITUMINOUS MINERALS (OTHER THAN CRUDE), AND PRODUCTS THEREFROM CONTAINING 70% (WT) OR MORE OF THESE OILS, N.E.S.
3346	3.288	0.147	3711	PETROLEUM OILS & OILS FROM BITUMINOUS MINERALS (OTHER THAN CRUDE)& PRODUCTS CONTAINING 70% (BY WT) OR MORE OF THESE OILS, EXCEPT WASTE OILS, NES
3347	1.429	0.156	1084	WASTE OILS
3351	1.822	0.203	1939	PETROLEUM JELLY; PARAFFIN WAX, MICROCRYSTALLINE PETROLEUM WAX, OTHER MINERAL WAXES, ETC. OBTAINED BY SYNTHESIS OR OTHER PROCESS, COLORED OR NOT
3352	0.176	0.073	1905	MINERAL TARS AND THEIR DISTILLATION PRODUCTS, INCLUDING SIMILAR PRODUCTS OBTAINED BY PROCESSING PETROLEUM OR BY ANY OTHER PROCESS
3353	1.310	0.121	1023	PITCH AND PITCH COKE FROM COAL TAR OR OTHER MINERAL TARS
3354	5.438	-0.114	2290	PETROLEUM BITUMEN, PETROLEUM COKE AND BITUMINOUS MIXTURES N.E.S.
3421	4.718	-0.249	1811	PROPANE, LIQUEFIED
3425	2.569	0.132	1442	BUTANE, LIQUEFIED
3431	2.073	-0.041	897	NATURAL GAS, LIQUEFIED
3432	66.169	0.340	798	NATURAL GAS, IN THE GASEOUS STATE
3441	2.324	0.028	1586	ETHYLENE, PROPYLENE, BUTYLENE AND BUTADIENE, LIQUEFIED
3442	0.513	0.223	1334	GASEOUS HYDROCARBONS, LIQUEFIED, N.E.S.
3449	3.949	0.018	1791	GASEOUS HYDROCARBONS IN THE GASEOUS STATE, N.E.S.
3450	1.000	-0.244	655	COAL GAS, WATER GAS, PRODUCER GAS AND SIMILAR GASES, OTHER THAN PETROLEUM GASES AND OTHER GASEOUS HYDROCARBONS
3510	1.000	0.051	676	ELECTRIC CURRENT
4111	2.198	0.275	1549	FISH OR MARINE MAMMAL FATS AND OILS AND THEIR FRACTIONS, WHETHER REFINED OR NOT, BUT NOT CHEMICALLY MODIFIED
4112	4.754	0.019	707	LARD; PIG FAT, N.E.S., AND POULTRY FAT, RENDERED, WHETHER OR NOT PRESSED OR SOLVENT EXTRACTED
4113	1.611	0.071	1312	ANIMAL OILS, FATS AND GREASES, N.E.S.
4211	8.621	-0.143	820	SOYBEAN OIL AND ITS FRACTIONS
4212	1.000	-0.498	642	COTTONSEED OIL AND ITS FRACTIONS
4213	3.746	-0.070	914	PEANUT (GROUNDNUT) OIL AND ITS FRACTIONS
4214	27.400	0.185	1816	OLIVE OIL AND OTHER OIL OBTAINED FROM OLIVES
4215	8.499	0.461	1493	SUNFLOWER SEED OR SAFFLOWER OIL AND FRACTIONS THEREOF
4216	5.937	0.153	884	CORN (MAIZE) OIL AND ITS FRACTIONS
4217	204.706	-0.042	1104	RAPE, COLZA OR MUSTARD OIL AND FRACTIONS THEREOF
4218	4.118	0.305	1317	SESAME (SESAMUM) OIL AND ITS FRACTIONS
4221	2.793	0.168	850	LINSEED OIL AND ITS FRACTIONS
4222	42.146	0.251	1242	PALM OIL AND ITS FRACTIONS
4223	81.487	0.035	1115	COCONUT (COPRA) OIL AND ITS FRACTIONS
4224	79.067	0.017	893	PALM KERNEL OR BABASSU OIL AND FRACTIONS THEREOF
4225	71.085	0.067	818	CASTOR OIL AND ITS FRACTIONS
4229	1.521	0.302	2357	FIXED VEGETABLE FATS (OTHER THAN SOFT), CRUDE, REFINED OR FRACTIONATED, N.E.S.
4311	1.090	-0.090	1158	ANIMAL OR VEGETABLE FATS AND OILS AND THEIR FRACTIONS PROCESSED N.E.S., AND INEDIBLE MIXTURES OR PREPARATIONS OF SUCH FATS AND OILS, N.E.S.
4312	5.626	0.207	1572	ANIMAL OR VEGETABLE FATS OR OILS AND THEIR FRACTIONS, HYDROGENATED, INTERESTERIFIED ETC., REFINED OR NOT, BUT NOT FURTHER PREPARED

Table A2 - Expenditure Elasticities and Forecast Performance at the Good Level

SITC Code	Expenditure Elasticity	Forecast Performance	Sample Size	Good Name
4313	2.185	0.351	1611	FATTY ACIDS, ACID OILS AND RESIDUES FROM THE TREATMENT OF ANIMAL OR VEGETABLE WAXES OR FATTY SUBSTANCES; DEGRAS
4314	1.862	-0.045	1435	WAXES OF ANIMAL OR VEGETABLE ORIGIN
5111	0.091	-0.054	2311	ACYCLIC HYDROCARBONS
5112	0.964	0.177	2380	CYCLIC HYDROCARBONS
5113	0.347	0.092	1825	HALOGENATED DERIVATIVES OF HYDROCARBONS
5114	0.319	0.053	1432	SULFONATED, NITRATED OR NITROSATED DERIVATIVES OF HYDROCARBONS, HALOGENATED OR NOT
5121	0.668	0.115	2614	ACYCLIC MONOHYDRIC ALCOHOLS
5122	0.573	0.112	2244	ACYCLIC ALCOHOLS, N.E.S. AND THE HALOGENATED, SULFONATED, NITRATED OR NITROSATED DERIVATIVES OF ACYCLIC ALCOHOLS
5123	0.816	0.564	1674	CYCLIC ALCOHOLS AND THEIR HALOGENATED, SULFONATED, NITRATED OR NITROSATED DERIVATIVES
5124	0.402	0.462	1725	PHENOLS AND PHENOL-ALCOHOLS, AND THEIR HALOGENATED, SULFONATED, NITRATED OR NITROSATED DERIVATIVES
5137	0.568	0.231	2677	MONOCARBOXYLIC ACIDS AND THEIR ANHYDRIDES, HALIDES, PEROXIDES AND PEROXYACIDS; THEIR HALOGENATED, SULFONATED, NITRATED OR NITROSATED DERIVATIVES
5138	1.354	0.183	2170	POLYCARBOXYLIC ACIDS AND THEIR ANHYDRIDES, HALIDES, PEROXIDES AND PEROXYACIDS; THEIR HALOGENATED, SULFONATED, NITRATED OR NITROSATED DERIVATIVES
5139	0.040	0.009	2348	CARBOXYLIC ACIDS WITH ADDED OXYGEN FUNCTION AND THEIR ANHYDRIDES, HALIDES, PEROXIDES ETC.; THEIR HALOGENATED, SULFONATED, NITRATED ETC. DERIVATIVES
5145	0.148	0.135	2065	AMINE-FUNCTION COMPOUNDS
5146	0.153	-0.052	2581	OXYGEN-FUNCTION AMINO-COMPOUNDS
5147	0.181	0.404	2207	CARBOXYAMIDE-FUNCTION COMPOUNDS; AMIDE-FUNCTION COMPOUNDS OF CARBONIC ACID (EXCLUDING UREA)
5148	0.227	0.128	2208	NITROGEN-FUNCTION COMPOUNDS N.E.S.
5154	0.117	0.332	1929	ORGANO-SULFUR COMPOUNDS
5155	0.102	0.402	1866	ORGANO-INORGANIC COMPOUNDS N.E.S.
5156	0.420	0.300	2346	LACTAMS; HETEROCYCLIC COMPOUNDS WITH OXYGEN HETERO-ATOM(S) ONLY
5157	0.758	0.338	2848	HETEROCYCLIC COMPOUNDS N.E.S.; NUCLEIC ACIDS
5158	0.411	0.122	1689	SULFONAMIDES
5161	0.896	0.082	2094	ETHERS, ALCOHOL PEROXIDES, ETHER PEROXIDES, EPOXIDES, ACETALS AND HEMIACETALS, AND THEIR HALOGENATED, SULFONATED, NITRATED OR NITROSATED DERIVATIVES
5162	0.170	0.254	2277	ALDEHYDE-, KETONE- AND QUINONE-FUNCTION COMPOUNDS
5163	0.407	-0.082	1676	ESTERS OF INORGANIC ACIDS AND THEIR SALTS AND HALOGENATED, SULFONATED, NITRATED OR NITROSATED DERIVATIVES
5169	0.175	0.072	2631	ORGANIC CHEMICALS, N.E.S.
5221	3.891	0.391	1749	CARBON (INCLUDING CARBON BLACK), N.E.S.
5222	0.071	0.222	2528	CHEMICAL ELEMENTS, N.E.S.
5223	0.467	0.458	2800	INORGANIC ACIDS AND INORGANIC OXYGEN COMPOUNDS OF NONMETALS
5224	0.658	0.193	1238	HALOGEN OR SULFUR COMPOUNDS OF NONMETALS
5225	0.917	0.511	2321	OXIDES OF ZINC, CHROMIUM, MANGANESE, IRON, COBALT, TITANIUM AND LEAD
5226	0.599	0.321	2811	INORGANIC BASES AND METALLIC OXIDES, HYDROXIDES AND PEROXIDES, N.E.S.
5231	0.152	0.515	1592	FLUORIDES; FLUOROSILICATES, FLUOROALUMINATES AND OTHER COMPLEX FLUORINE SALTS
5232	0.739	0.095	1937	CHLORIDES, CHLORIDE OXIDES AND HYDROXIDES; BROMIDES AND BROMIDE OXIDES; IODIDES AND IODIDE OXIDES
5233	6.777	0.147	1212	HYPOCHLORITES; COMMERCIAL CALCIUM HYPOCHLORITE; CHLORITES; HYPOBROMITES; CHLORATES AND PERCHLORATES; BROMATES AND PERBROMATES; IODATES AND PERIODATES
5234	1.387	0.374	2056	SULFIDES, POLYSULFIDES, DITHIONITES, SULFOXYLATES, SULFITES, THIOSULFATES, SULFATES AND ALUMS
5235	0.336	0.234	1365	NITRITES; NITRATES
5236	2.879	0.206	1760	PHOSPHINATES (HYPOPHOSPHITES), PHOSPHONATES (PHOSPHITES), PHOSPHATES AND POLYPHOSPHATES
5237	1.294	0.525	2071	CARBONATES; PEROXOCARBONATES (PERCARBONATES); COMMERCIAL AMMONIUM CARBONATE CONTAINING AMMONIUM CARBAMATE
5238	0.773	0.255	1979	METALLIC SALTS AND PEROXYSALTS OF INORGANIC ACIDS, N.E.S.
5243	0.073	0.185	1804	SALTS OF METALLIC ACIDS; ORGANIC AND INORGANIC COMPOUNDS OF PRECIOUS METALS
5249	0.586	0.523	2315	INORGANIC CHEMICAL PRODUCTS, N.E.S.
5251	0.409	-0.102	1464	RADIOACTIVE CHEMICAL ELEMENTS AND ISOTOPES (AND FISSILE OR FERTILE ELEMENTS AND ISOTOPES) AND THEIR COMPOUNDS, INCLUDING MIXTURES AND RESIDUES
5259	0.355	0.493	1637	STABLE ISOTOPES AND COMPOUNDS; RARE-EARTH METAL COMPOUNDS OR MIXTURES OF YTTRIUM OR SCANDIUM
5311	1.290	0.539	2185	SYNTHETIC ORGANIC COLORING MATTER AND PREPARATIONS BASED THEREON
5312	1.035	0.315	1626	SYNTHETIC ORGANIC FLUORESCENT BRIGHTENING AGENTS OR LUMINOPHORES; COLOR LAKES AND PREPARATIONS BASED THEREON
5322	0.256	0.106	2240	TANNING EXTRACTS OF VEGETABLE ORIGIN; TANNINS AND DERIVATIVES; COLORING MATTER OF VEGETABLE OR ANIMAL ORIGIN, AND PREPARATIONS BASED THEREON
5323	0.309	0.258	1284	SYNTHETIC ORGANIC TANNING SUBSTANCES; INORGANIC TANNING SUBSTANCES; TANNING PREPARATIONS; ENZYMIC PREPARATIONS FOR PRE-TANNING
5331	2.002	0.380	2458	COLORING MATTER N.E.S.; PREPARATIONS BASED ON COLORING MATTER, N.E.S.; INORGANIC PRODUCTS USED AS LUMINOPHORES
5332	2.162	0.175	2000	PRINTING INK
5334	1.805	0.640	2514	PAINTS AND VARNISHES (ENAMELS, LACQUERS ETC.); PREPARED WATER PIGMENTS; PIGMENTS FOR PAINT MANUFACTURE; STAMPING FOILS; DYES OR COLORS FOR RETAIL SALE
5335	1.201	0.314	2350	COLORING PREPARATIONS USED IN THE CERAMIC, ENAMELING AND GLASS INDUSTRIES; ARTISTS' COLORS, PAINT DRIERS AND MASTICS
5411	2.098	0.451	2187	PROVITAMINS AND VITAMINS, NATURAL OR REPRODUCED BY SYNTHESIS, NOT PUT UP AS MEDICAMENTS
5413	0.283	0.170	2273	ANTIBIOTICS, NOT PUT UP AS MEDICAMENTS
5414	0.172	0.046	1813	VEGETABLE ALKALOIDS, NATURAL OR REPRODUCED BY SYNTHESIS, AND SALTS, ETHERS, ESTERS AND OTHER DERIVATIVES, NOT PUT UP AS MEDICAMENTS
5415	0.048	-0.043	2003	HORMONES, NATURAL OR REPRODUCED BY SYNTHESIS; HORMONE DERIVATIVES AND OTHER STEROIDS USED AS HORMONES, NOT PUT UP AS MEDICAMENTS
5416	2.651	0.136	2833	GLYCOSIDES; GLANDS OR OTHER ORGANS AND EXTRACTS; ANTISERA, VACCINES AND SIMILAR PRODUCTS
5419	2.326	0.465	2836	PHARMACEUTICAL GOODS, OTHER THAN MEDICAMENTS
5421	1.749	0.236	1679	MEDICAMENTS CONTAINING ANTIBIOTICS OR THEIR DERIVATIVES
5422	1.774	0.418	1657	MEDICAMENTS CONTAINING HORMONES, THEIR DERIVATIVES AND OTHER STEROIDS USED AS HORMONES, NOT CONTAINING ANTIBIOTICS OR THEIR DERIVATIVES
5423	1.874	-0.038	1491	MEDICAMENTS CONTAINING ALKALOIDS AND THEIR DERIVATIVES (NOT CONTAINING HORMONES OR ANTIBIOTICS OR PRODUCTS USED AS HORMONES OR ANTIBIOTICS), N.E.S.
5429	5.631	0.015	2968	MEDICAMENTS, N.E.S.
5513	1.838	0.370	3522	ESSENTIAL OILS, INCLUDING CONCRETES AND ABSOLUTES; RESINOIDES; CONCENTRATES IN VARIOUS FORMS; TERPENIC BY-PRODUCTS OF ESSENTIAL OILS, ETC.
5514	13.830	0.137	2384	MIXTURES OF ODORIFEROUS SUBSTANCES AND MIXTURES (INCLUDING ALCOHOLIC SOLUTIONS) WITH ONE OR MORE ODORIFEROUS SUBSTANCES AS INDUSTRIAL RAW MATERIALS
5531	22.989	0.329	2792	PERFUMES AND TOILET WATERS
5532	NaN	NaN	624	BEAUTY OR MAKE-UP SKIN CARE PREPARATIONS, INCLUDING SUNSCREEN OR SUNTAN PREPARATIONS; MANICURE AND PEDICURE PREPARATIONS
5533	5.252	0.353	2891	COSMETIC OR TOILET PREPARATIONS FOR USE ON THE HAIR, INCLUDING SHAMPOOS
5534	2.859	0.221	1873	ORAL OR DENTAL HYGIENE PREPARATIONS, INCLUDING DENTURE FIXATIVE PASTES AND POWDERS
5535	1.963	0.261	2410	PRE-SHAVE, SHAVING OR AFTER-SHAVE PREPARATIONS, PERSONAL DEODORANTS ETC. AND OTHER PERFUMERY, COSMETIC OR TOILET PREPARATIONS, N.E.S.
5541	3.647	0.403	3457	SOAP; ORGANIC SURFACE-ACTIVE PRODUCTS USED AS SOAP IN BARS, CAKES, OR SHAPES; PAPER, WADDING, ETC. IMPREGNATED OR COATED WITH SOAP OR DETERGENT
5542	6.655	0.045	3240	ORGANIC SURFACE-ACTIVE AGENTS OTHER THAN SOAP; SURFACE-ACTIVE, WASHING AND CLEANING PREPARATIONS, WHETHER OR NOT CONTAINING SOAP, N.E.S.
5543	0.177	0.118	997	POLISHES AND CREAMS (EXCEPT ARTIFICIAL AND PREPARED WAXES), FOR FOOTWEAR, FURNITURE, FLOORS, GLASS, METAL, ETC.; SCOURING PASTES AND PREPARATIONS
5621	1.610	0.320	2186	MINERAL OR CHEMICAL FERTILIZERS, NITROGENOUS, (IMPORTS ONLY)
5622	1.668	0.002	785	MINERAL OR CHEMICAL FERTILIZERS, PHOSPHATIC, (IMPORTS ONLY)
5623	152.779	0.017	1347	MINERAL OR CHEMICAL FERTILIZERS, POTASSIC, OTHER THAN CRUDE NATURAL POTASSIUM SALTS, (IMPORTS ONLY)
5629	1.147	0.071	1571	FERTILIZERS, N.E.S., (IMPORTS ONLY)
5711	34.910	0.322	2056	POLYETHYLENE, IN PRIMARY FORMS
5712	7.374	0.360	1352	ETHYLENE-VINYL ACETATE COPOLYMERS, IN PRIMARY FORMS
5719	11.177	0.313	1690	POLYMERS OF ETHYLENE, N.E.S., IN PRIMARY FORMS
5721	0.348	-0.038	1954	POLYSTYRENE, IN PRIMARY FORMS
5729	1.328	0.435	1859	STYRENE POLYMERS, OTHER THAN POLYSTYRENE, IN PRIMARY FORMS
5731	2.835	0.370	1906	POLYVINYL CHLORIDE, IN PRIMARY FORMS
5739	1.641	0.130	1754	VINYL CHLORIDE COPOLYMERS (EXCEPT POLYVINYL CHLORIDE) AND POLYMERS OF OTHER HALOGENATED OLEFINS, IN PRIMARY FORMS
5741	0.812	0.213	1930	POLYACETALS AND OTHER POLYETHERS, IN PRIMARY FORMS
5742	2.076	0.197	2159	EPOXIDE RESINS, IN PRIMARY FORMS
5743	3.210	0.347	2646	POLYCARBONATES, ALKYD RESINS AND OTHER POLYESTERS, IN PRIMARY FORMS
5751	4.083	0.418	2218	POLYMERS OF PROPYLENE OR OTHER OLEFINS, IN PRIMARY FORMS
5752	2.090	0.456	2140	ACRYLIC POLYMERS, IN PRIMARY FORMS
5753	1.606	0.469	1892	POLYAMIDES, IN PRIMARY FORMS
5754	2.241	0.509	2290	AMINO-RESINS, PHENOLIC RESINS AND POLYURETHANES, IN PRIMARY FORMS
5755	0.862	0.229	1710	CELLULOSE AND ITS CHEMICAL DERIVATIVES, N.E.S., IN PRIMARY FORMS
5759	0.967	0.455	2989	PLASTICS, N.E.S., IN PRIMARY FORMS
5791	2.401	0.066	1197	WASTE, PARINGS AND SCRAP OF POLYMERS OF ETHYLENE
5792	1.122	-0.063	786	WASTE, PARINGS AND SCRAP OF POLYMERS OF STYRENE
5793	1.730	-0.034	792	WASTE, PARINGS AND SCRAP OF POLYMERS OF VINYL CHLORIDE
5799	4.626	0.051	3235	WASTE, PARINGS AND SCRAP, OF PLASTICS, N.E.S.
5811	3.203	0.001	1421	ARTIFICIAL GUTS (SAUSAGE CASINGS) OF HARDENED PROTEIN OR CELLULOSIC MATERIALS
5812	1.801	0.205	2676	RIGID TUBES, PIPES AND HOSES OF PLASTICS
5813	0.959	0.273	2122	FLEXIBLE TUBES, PIPES AND HOSES OF PLASTICS, HAVING A MINIMUM BURST PRESSURE OF 27.6 MPA
5814	3.448	0.192	2869	TUBES, PIPES AND HOSES, N.E.S. OF PLASTICS, NOT REINFORCED OR OTHERWISE COMBINED WITH OTHER MATERIALS, WITHOUT FITTINGS
5815	5.367	0.298	1935	TUBES, PIPES AND HOSES, N.E.S. OF PLASTICS, NOT REINFORCED OR OTHERWISE COMBINED WITH OTHER MATERIALS, WITH FITTINGS
5816	3.073	0.405	2587	TUBES, PIPES AND HOSES OF PLASTICS, N.E.S.
5817	4.712	0.758	2809	FITTINGS OF PLASTICS, FOR TUBES, PIPES AND HOSES (INCLUDING JOINTS, ELBOWS AND FLANGES)
5821	0.218	0.389	3007	PLATES, SHEETS, FILM, FOIL, TAPE AND OTHER FLAT SHAPES OF PLASTICS, SELF-ADHESIVE, OTHER THAN ARTICLES DESIGNED AS FLOOR, WALL AND CEILING COVERINGS

Table A2 - Expenditure Elasticities and Forecast Performance at the Good Level

SITC Code	Expenditure Elasticity	Forecast Performance	Sample Size	Good Name
5822	4.521	0.678	3534	PLATES, SHEETS, FILM, FOIL AND STRIP OF PLASTICS, NONCELLULAR, NOT SELF-ADHESIVE AND NOT REINFORCED, LAMINATED, OR SUPPORTED BY OTHER MATERIALS N.E.S.
5829	2.475	0.688	3213	PLATES, SHEETS, FILM, FOIL AND STRIP OF PLASTICS, N.E.S.
5831	5.301	0.266	1246	MONOFILAMENT WITH A CROSS-SECTIONAL DIMENSION EXCEEDING 1 MM, RODS, STICKS AND PROFILE SHAPES OF POLYMERS OF ETHYLENE, NOT MORE THAN SURFACE-WORKED
5832	26.627	0.316	1541	MONOFILAMENT WITH A CROSS-SECTIONAL DIMENSION EXCEEDING 1 MM, RODS, STICKS AND PROFILE SHAPES OF VINYL CHLORIDE POLYMERS, NOT MORE THAN SURFACE-WORKED
5839	0.791	0.558	1949	MONOFILAMENT WITH A CROSS-SECTIONAL DIMENSION EXCEEDING 1 MM, RODS, STICKS AND PROFILE SHAPES OF PLASTICS, N.E.S., NOT MORE THAN SURFACE-WORKED
5911	1.410	0.110	1754	INSECTICIDES, PUT UP OR PACKED FOR RETAIL SALE OR AS PREPARATIONS OR ARTICLES
5912	0.243	0.161	1427	FUNGICIDES, PUT UP OR PACKED FOR RETAIL SALE OR AS PREPARATIONS OR ARTICLES
5913	0.938	0.183	1386	HERBICIDES (WEED KILLERS), ANTISPROUTING PRODUCTS AND PLANT-GROWTH REGULATORS, PUT UP OR PACKED FOR RETAIL SALE OR AS PREPARATIONS OR ARTICLES
5914	2.378	0.237	1247	DISINFECTANTS, RODENTICIDES AND SIMILAR PRODUCTS, PUT UP OR PACKED FOR RETAIL SALE OR AS PREPARATIONS OR ARTICLES
5919	1.994	0.065	1000	PRODUCTS OF GROUP 591, PUT UP IN FORMS OR PACKINGS FOR RETAIL SALE OR AS PREPARATIONS OR ARTICLES, NES
5921	6.211	0.170	2045	STARCHES, INULIN AND WHEAT GLUTEN
5922	0.371	0.276	2945	ALBUMINOIDAL SUBSTANCES, MODIFIED STARCHES AND GLUES
5931	1.120	0.067	1548	PROPELLANT POWDERS AND OTHER PREPARED EXPLOSIVES
5932	0.387	0.183	1367	SAFETY FUSES; DETONATING FUSES; PERCUSSION OR DETONATING CAPS; IGNITORS; ELECTRIC DETONATORS
5933	14.505	0.534	1221	FIREWORKS, SIGNALLING FLARES, RAIN ROCKETS, FOG SIGNALS AND OTHER PYROTECHNIC ARTICLES
5972	2.765	0.171	1617	ANTIKNOCK PREPARATIONS, OXIDATION INHIBITORS, ANTICORROSIIVE PREPARATIONS AND OTHER PREPARED ADDITIVES FOR MINERAL OILS (INCLUDING GASOLINE), ETC.
5973	2.115	0.336	1346	PREPARED LIQUIDS FOR HYDRAULIC TRANSMISSIONS; ANTIFREEZING PREPARATIONS
5977	2.239	0.312	1794	LUBRICATING PREPARATIONS (CUTTING OIL, BOLT OR NUT RELEASE, ANTIRUST, ETC.), HAVING LESS THAN 70% BY WEIGHT OF PETROLEUM OR BITUMINOUS MINERAL OILS
5981	1.826	0.389	1858	WOOD AND RESIN BASED CHEMICAL PRODUCTS
5983	1.675	0.509	1933	ARTIFICIAL WAXES AND PREPARED WAXES
5984	2.055	-0.023	877	MIXED ALKYL BENZENES AND MIXED ALKYL NAPHTHALENES, N.E.S.
5985	6.389	0.527	2173	CHEMICAL ELEMENTS DOPED FOR USE IN ELECTRONICS, IN DISCS, WAFERS OR SIMILAR FORMS; CHEMICAL COMPOUNDS DOPED FOR USE IN ELECTRONICS
5986	0.211	0.168	3067	ORGANIC CHEMICAL PRODUCTS, N.E.S.
5988	2.745	0.339	2035	CATALYSTS AND CATALYTIC PREPARATIONS, N.E.S.
5989	1.219	0.342	3170	CHEMICAL PRODUCTS AND PREPARATIONS, N.E.S.
5991	NaN	NaN	624	MUNICIPAL WASTE; SEWAGE SLUDGE
5992	NaN	NaN	624	CLINICAL WASTE
5993	NaN	NaN	624	WASTE ORGANIC SOLVENTS
5994	NaN	NaN	624	WASTES OF METAL PICKLING LIQUORS, HYDRAULIC FLUIDS, BRAKE FLUIDS AND ANTI-FREEZE FLUIDS
5999	NaN	NaN	624	WASTES FROM CHEMICAL OR ALLIED INDUSTRIES, NES
6112	2.005	0.205	1278	COMPOSITION LEATHER WITH A LEATHER OR LEATHER FIBER BASE, IN SLABS, SHEETS OR STRIP
6113	2.014	0.340	717	WHOLE BOVINE SKIN LEATHER (WITHOUT HAIR), WITH A SURFACE AREA NOT OVER 28 SQ. FT. (2,6 M2), NOT SPECIALLY DRESSED OR FINISHED
6114	5.582	0.590	3010	BOVINE LEATHER, N.E.S. AND EQUINE LEATHER (WITHOUT HAIR), NOT SPECIALLY DRESSED OR FINISHED
6115	3.155	0.099	1676	SHEEP OR LAMB SKIN LEATHER (WITHOUT WOOL), NOT SPECIALLY DRESSED OR FINISHED
6116	2.064	0.095	1266	GOAT OR KIDSKIN LEATHER (WITHOUT HAIR), NOT SPECIALLY DRESSED OR FINISHED
6117	1.669	0.381	2120	LEATHER OF ANIMALS, N.E.S. (WITHOUT HAIR), NOT SPECIALLY DRESSED OR FINISHED
6118	1.658	0.268	1380	LEATHER, SPECIALLY DRESSED OR FINISHED, N.E.S.
6121	0.604	0.060	798	ARTICLES OF LEATHER OR COMPOSITION LEATHER USED IN MACHINERY OR MECHANICAL APPLIANCES OR FOR OTHER TECHNICAL USES
6122	NaN	NaN	624	SADDLERY AND HARNESS FOR ANY ANIMAL (INCLUDING LEADS, MUZZLES, SADDLE CLOTHS AND BAGS, DOG COATS, ETC.), OF ANY MATERIAL
6129	0.977	0.117	765	ARTICLES OF LEATHER OR OF COMPOSITION LEATHER, N.E.S.
6131	1.727	0.255	1908	WHOLE FURSKINS, WITH OR WITHOUT HEAD, TAIL OR PAWS, NOT ASSEMBLED
6132	NaN	NaN	624	FURSKIN HEADS, TAILS, PAWS AND OTHER PIECES OR CUTTINGS, NOT ASSEMBLED
6133	NaN	NaN	624	WHOLE FURSKINS AND FURSKIN PIECES OR CUTTINGS, ASSEMBLED
6211	3.349	0.389	1972	COMPOUNDED RUBBER, UNVULCANIZED, IN PRIMARY FORMS OR IN PLATES, SHEETS OR STRIP
6212	1.822	0.470	1929	UNVULCANIZED RUBBER FORMS, N.E.S. (RODS, TUBES AND PROFILE SHAPES) AND ARTICLES (DISCS AND RINGS, ETC.)
6213	1.750	0.481	2675	VULCANIZED RUBBER THREAD AND CORD; PLATES, SHEETS, STRIP, RODS AND PROFILE SHAPES OF UNHARDENED VULCANIZED RUBBER
6214	3.218	0.647	3159	TUBES, PIPES AND HOSES OF UNHARDENED VULCANIZED RUBBER, WITH OR WITHOUT THEIR FITTINGS (JOINTS, ELBOWS, ETC.)
6251	4.232	0.607	2703	NEW PNEUMATIC RUBBER TIRES, OF A KIND USED ON MOTOR CARS (INCLUDING STATION WAGONS AND RACING CARS)
6252	7.513	0.594	2570	NEW PNEUMATIC RUBBER TIRES, OF A KIND USED ON BUSES AND TRUCKS
6253	6.414	0.368	1190	NEW PNEUMATIC RUBBER TIRES, OF A KIND USED ON AIRCRAFT
6254	2.009	0.421	1726	NEW PNEUMATIC RUBBER TIRES, OF A KIND USED ON MOTORCYCLES AND BICYCLES
6255	3.680	0.496	2712	NEW PNEUMATIC RUBBER TIRES, N.E.S.
6259	1.900	0.308	2884	RUBBER TIRES, N.E.S. (INCLUDING RETREADED TIRES), INTERCHANGEABLE TIRE TREADS, TIRE FLAPS AND INNER TUBES
6291	0.066	0.218	1112	HYGENIC OR PHARMACEUTICAL ARTICLES (INCLUDING NURSING NIPPLES), OF UNHARDENED VULCANIZED RUBBER, WITH OR WITHOUT FITTINGS OF HARD RUBBER
6292	2.886	0.654	2789	CONVEYOR OR TRANSMISSION BELTS OR BELTING, OF VULCANIZED RUBBER
6299	0.119	0.166	3239	HARD RUBBER; ARTICLES OF HARDENED RUBBER OR OF UNHARDENED VULCANIZED RUBBER, N.E.S.
6331	15.065	0.060	1143	ARTICLES OF NATURAL CORK
6332	0.096	0.032	1319	AGGLOMERATED CORK AND ARTICLES OF AGGLOMERATED CORK
6341	3.210	0.310	2783	VENEER SHEETS AND SHEETS FOR PLYWOOD AND OTHER WOOD SAWN LENGTHWISE, SLICED OR PEELD, NOT OVER 6 MM THICK
6342	30.667	0.258	1786	DENSIFIED WOOD AND RECONSTITUTED WOOD
6343	15.029	0.481	2897	PLYWOOD OF WOOD SHEETS WITH EACH PLY NOT OVER 6 MM THICK
6344	4.815	-0.376	1564	PLYWOOD, N.E.S., VENEERED PANELS AND SIMILAR LAMINATED WOOD
6345	4.482	0.133	2283	FIBERBOARD OF WOOD OR OTHER LIGNEOUS MATERIALS, WHETHER OR NOT BONDED WITH RESINS OR OTHER ORGANIC SUBSTANCES
6349	1.364	-0.176	722	WOOD, SIMPLY SHAPED, N.E.S.
6351	0.942	-0.085	2243	PACKINGS AND CABLE DRUMS OF WOOD; WOODEN BOX PALLETS AND SIMILAR ARTICLES
6352	10.037	0.231	1174	WOOD CASKS, BARRELS, VATS, TUBS AND OTHER COOPERS' PRODUCTS, INCLUDING STAVES AND OTHER WOODEN PARTS
6353	0.924	0.066	2807	BUILDERS' WOOD JOINERY AND CARPENTRY (INCLUDING CELLULAR WOOD PANELS AND ASSEMBLED PARQUET PANELS)
6354	0.800	-0.099	2315	MANUFACTURES OF WOOD FOR DOMESTIC OR DECORATIVE USE (OTHER THAN FURNITURE)
6359	1.086	0.084	837	MANUFACTURED ARTICLES OF WOOD, N.E.S.
6411	47.316	0.133	1032	NEWSPRINT IN ROLLS OR SHEETS
6412	9.365	0.486	2430	PAPER AND PAPERBOARD, UNCOATED, FOR WRITING, PRINTING, ETC., PUNCH CARD STOCK AND PUNCH TAPE PAPER, IN ROLLS OR SHEETS; HANDMADE PAPER AND PAPERBOARD
6413	2.820	0.280	2034	PAPER AND PAPERBOARD, USED FOR WRITING, PRINTING OR OTHER GRAPHIC PURPOSES, COATED, IMPREGNATED, SURFACE-COLORED, ETC., IN ROLLS OR SHEETS
6414	5.714	0.278	2074	KRAFT PAPER AND PAPERBOARD, UNCOATED, N.E.S., IN ROLLS OR SHEETS
6415	3.638	0.136	2104	PAPER AND PAPERBOARD, UNCOATED, N.E.S., IN ROLLS OR SHEETS
6416	6.727	0.153	1924	PAPER AND PAPERBOARD, CORRUGATED, CREPED, CRINKLED, EMBOSSED OR PERFORATED, IN ROLLS OR SHEETS
6417	5.721	0.311	2608	PAPER, PAPERBOARD, CELLULOSE WADDING AND WEBS OF CELLULOSE FIBERS, COATED, IMPREGNATED, COVERED, SURFACE-DECORATED, ETC., N.E.S., IN ROLLS OR SHEETS
6419	2.177	0.346	1772	CONVERTED PAPER AND PAPERBOARD, N.E.S., IN ROLLS OR SHEETS
6421	10.438	0.396	3810	CARTONS, BOXES, CASES, BAGS, ETC. OF PAPER, PAPERBOARD, CELLULOSE WADDING OR WEBS; BOX FILES, LETTER TRAYS, ETC. OF PAPER OR PAPERBOARD
6422	2.738	0.467	1935	ENVELOPES, LETTER CARDS, PLAIN POSTCARDS, ETC. OF PAPER OR PAPERBOARD; BOXES, WALLETS, ETC. OF PAPER OR PAPERBOARD, CONTAINING ASSORTED STATIONARY
6423	4.004	0.246	2908	REGISTERS, BOOKS (ACCOUNT, NOTE, ORDER AND RECEIPT), LOOSE LEAF BINDERS, FILE COVERS, SAMPLE ALBUMS, ETC. OF PAPER OR PAPERBOARD
6424	3.823	0.095	2486	PAPER AND PAPERBOARD, CUT TO SIZE OR SHAPE, N.E.S.
6429	7.659	0.325	3532	ARTICLES OF PAPER PULP, PAPER, PAPERBOARD OR CELLULOSE WADDING, N.E.S.
6511	4.031	0.512	2416	YARN OF WOOL OR ANIMAL HAIR (EXCLUDING WOOL TOPS)
6512	1.401	0.044	1448	COTTON SEWING THREAD, PACKAGED FOR RETAIL SALE OR NOT
6513	2.917	0.409	2682	COTTON YARN, OTHER THAN SEWING THREAD, PACKAGED FOR RETAIL SALE OR NOT
6514	2.945	0.525	1967	SEWING THREAD OF MANMADE FIBERS, PACKAGED FOR RETAIL SALE OR NOT
6515	4.532	0.518	2069	SYNTHETIC FILAMENT YARN (OTHER THAN SEWING THREAD) TEXTURED, NOT PACKAGED FOR RETAIL SALE, INCLUDING MONOFILAMENT OF LESS THAN 67 DECITEX
6516	3.774	0.516	2602	SYNTHETIC FILAMENT YARN (OTHER THAN SEWING THREAD), N.E.S., INCLUDING MONOFILAMENT OF LESS THAN 67 DECITEX
6517	2.264	0.206	1737	ARTIFICIAL FILAMENT YARN (NO SEWING THREAD); ARTIFICIAL MONOFILAMENT, N.E.S.; STRIP AND THE LIKE OF ARTIFICIAL TEXTILE MATERIALS, N.E.S.
6518	1.517	0.407	2787	STAPLE FIBER YARN (NO SEWING THREAD); SYNTHETIC MONOFILAMENTS, N.E.S.; SYNTHETIC TEXTILE STRIP AND THE LIKE NOT OVER 5 MM WIDE
6519	1.048	0.247	2501	YARN OF TEXTILE FIBERS, N.E.S. (INCLUDING PAPER YARN AND GLASS FIBER YARN, SLIVERS AND ROVINGS)
6521	2.482	0.412	1909	COTTON GAUZE, PILE AND CHENILLE FABRICS, WOVEN (OTHER THAN NARROW OR SPECIAL FABRICS)
6522	4.197	0.374	2657	COTTON WOVEN FABRICS, N.E.S., UNBLEACHED
6523	7.251	0.472	2783	COTTON WOVEN FABRICS, N.E.S., BLEACHED, DYED, PRINTED, ETC., NOT UNDER 85% (WEIGHT) COTTON, WEIGHING NOT OVER 200 G/M2
6524	4.425	0.419	2966	COTTON WOVEN FABRICS, N.E.S., BLEACHED, DYED, PRINTED, ETC., NOT UNDER 85% (WEIGHT) COTTON, WEIGHING OVER 200 G/M2
6525	2.906	0.547	2158	COTTON WOVEN FABRICS N.E.S., BLEACHED, DYED, PRINTED, ETC. UNDER 85% (WEIGHT) COTTON, MIXED MAINLY WITH MANMADE FIBERS, WEIGHING NOT OVER 200 G/M2
6526	2.885	0.552	2302	COTTON WOVEN FABRICS, N.E.S., BLEACHED, DYED, PRINTED, ETC., UNDER 85% (WEIGHT) COTTON, MIXED MAINLY WITH MANMADE FIBERS, WEIGHING OVER 200 G/M2
6529	2.928	0.412	2033	COTTON WOVEN FABRICS, N.E.S., MIXED WITH TEXTILE MATERIALS, N.E.S.
6531	1.911	0.412	3165	WOVEN FABRICS OF SYNTHETIC FILAMENT YARN (INCLUDING FABRIC OF MONOFILAMENTS AND STRIP OF HEADING 651.88), EXCEPT PILE, CHENILLE OR NARROW ETC. FABRICS
6532	1.423	0.511	2380	WOVEN FABRICS OF SYNTHETIC STAPLE FIBERS, NOT UNDER 85% (WEIGHT) OF SUCH FIBERS (OTHER THAN PILE OR CHENILLE AND NARROW OR SPECIAL FABRICS)
6533	3.413	0.469	2083	WOVEN FABRICS OF SYNTHETIC STAPLE FIBERS, UNDER 85% (WEIGHT) OF SUCH FIBERS, MIXED MAINLY WITH COTTON (EXCEPT PILE, CHENILLE AND NARROW ETC. FABRICS)
6534	6.159	0.465	2454	WOVEN FABRICS OF SYNTHETIC STAPLE FIBERS, UNDER 85% (WEIGHT) OF SUCH FIBERS, MIXED MAINLY WITH FIBERS OTHER THAN COTTON (NO PILE, NARROW ETC. FABRICS)
6535	3.832	0.356	1956	WOVEN FABRICS OF ARTIFICIAL FILAMENT YARN (INCLUDING FABRICS OF MONOFILAMENTS AND STRIP OF HEADING 651.77), NO PILE, CHENILLE OR NARROW ETC. FABRICS
6536	1.919	0.424	1798	WOVEN FABRICS OF ARTIFICIAL STAPLE FIBERS, NOT UNDER 85% (WEIGHT) OF SUCH FIBERS (OTHER THAN PILE OR CHENILLE AND NARROW OR SPECIAL FABRICS)

Table A2 - Expenditure Elasticities and Forecast Performance at the Good Level

SITC Code	Expenditure Elasticity	Forecast Performance	Sample Size	Good Name
6538	2.719	0.643	2035	WOVEN FABRICS OF ARTIFICIAL STAPLE FIBERS, UNDER 85% (WEIGHT) OF SUCH FIBERS (OTHER THAN PILE OR CHENILLE AND NARROW OR SPECIAL FABRICS)
6539	7.310	0.412	2126	WOVEN PILE AND CHENILLE FABRICS OF MANMADE FIBERS (OTHER THAN NARROW OR SPECIAL FABRICS)
6541	20.471	0.420	2088	WOVEN FABRICS OF SILK OR SILK WASTE (OTHER THAN PILE OR CHENILLE AND NARROW OR SPECIAL FABRICS)
6542	4.784	0.585	2351	WOVEN FABRICS OF WOOL OR FINE ANIMAL HAIR, NOT UNDER 85% (WEIGHT) OF SUCH FIBERS (OTHER THAN PILE OR CHENILLE AND NARROW OR SPECIAL FABRICS)
6543	5.931	0.600	2089	WOVEN FABRICS OF WOOL OR FINE ANIMAL HAIR, UNDER 85% (WEIGHT) OF SUCH FIBERS; WOVEN PILE AND CHENILLE FABRICS OF WOOL, ETC. (NOT NARROW ETC. FABRICS)
6544	4.186	0.528	2389	WOVEN FABRICS OF FLAX (OTHER THAN NARROW OR SPECIAL FABRICS)
6545	25.510	0.539	1222	WOVEN FABRICS OF JUTE OR OTHER TEXTILE BAST FIBERS (OTHER THAN NARROW OR SPECIAL FABRICS)
6546	1.422	0.391	1734	WOVEN FABRICS OF GLASS FIBER (INCLUDING NARROW FABRICS)
6549	2.554	0.417	2000	WOVEN FABRICS, N.E.S.
6551	7.897	0.237	1888	KNITTED OR CROCHETED PILE FABRICS (INCLUDING LONG PILE AND TERRY FABRICS), WHETHER OR NOT IMPREGNATED, COATED, COVERED OR LAMINATED
6552	7.714	0.409	3188	KNITTED OR CROCHETED FABRICS (EXCLUDING PILE FABRICS), NOT IMPREGNATED, COATED, COVERED OR LAMINATED
6561	5.613	0.719	3049	NARROW WOVEN FABRICS (OTHER THAN LABELS, BADGES, ETC.); NARROW FABRICS CONSISTING OF WARP WITHOUT WEFT ASSEMBLED BY MEANS OF AN ADHESIVE (BOLDUCS)
6562	3.941	0.474	2661	LABELS, BADGES AND SIMILAR ARTICLES OF TEXTILE MATERIALS, IN THE PIECE OR STRIPS, ETC., NOT EMBROIDERED
6563	3.386	0.345	2559	GIMPED YARN AND MAN-MADE MONOFILAMENT STRIP; CHENILLE YARN; LOOP-WALE YARN; BRAIDS IN THE PIECE; ORNAMENTAL TRIMMINGS, TASSELS, ETC. (NO EMBROIDERY)
6564	1.922	0.314	1984	TULLES AND OTHER NET FABRICS; LACE, IN THE PIECE, IN STRIPS OR MOTIFS
6565	7.232	0.707	2444	EMBROIDERY, IN THE PIECE, IN STRIPS OR IN MOTIFS
6571	2.703	0.148	1882	FELT, WHETHER OR NOT IMPREGNATED, COATED, COVERED OR LAMINATED, N.E.S.
6572	2.080	0.392	2883	NONWOVENS, WHETHER OR NOT IMPREGNATED, COATED, COVERED OR LAMINATED, N.E.S.
6573	2.147	0.411	2901	TEXTILE FABRICS AND PRODUCTS COATED OR IMPREGNATED, N.E.S.
6574	2.531	0.338	1122	QUILTED TEXTILE PRODUCTS IN THE PIECE COMPOSED OF ONE OR MORE LAYERS OF TEXTILE MATERIALS ASSEMBLED WITH PADDING, N.E.S.
6575	2.937	0.335	3643	TWINE, CORDAGE, ROPE AND CABLES, AND MANUFACTURES THEREOF (E.G., FISHING NETS, ROPEMAKERS' WARES)
6576	3.038	0.088	1416	HAT SHAPES, HAT FORMS, HAT BODIES AND HOODS
6577	5.184	0.420	2893	TEXTILE WADDING, WICKS, FABRICS AND ARTICLES FOR USE IN MACHINERY OR PLANT
6578	2.287	0.278	1671	RUBBER THREAD AND CORD, TEXTILE COVERED; YARNS OF SPECIFIED MANMADE MONOFILAMENTS, STRIP, ETC., IMPREGNATED, COVERED, ETC. WITH RUBBER OR PLASTICS
6579	2.575	0.380	2279	SPECIAL PRODUCTS OF TEXTILE MATERIALS
6581	5.184	0.062	3142	SACKS AND BAGS OF TEXTILE MATERIALS USED FOR PACKING GOODS
6582	11.730	0.123	2812	TARPAULINS, AWNINGS AND SUNBLINDS; TENTS; SAILS FOR BOATS, SAILBOARDS OR LANDCRAFT; CAMPING GOODS
6583	17.094	0.158	3881	BLANKETS AND TRAVELING RUGS (NOT ELECTRIC)
6584	17.738	0.609	4745	LINENS FOR THE BED, TABLE, TOILET AND KITCHEN
6585	2.043	0.233	4129	CURTAINS AND OTHER FURNISHING ARTICLES, N.E.S., OF TEXTILE MATERIALS
6589	1.329	-0.099	4511	MADE-UP ARTICLES, N.E.S., OF TEXTILE MATERIALS
6591	3.924	0.138	1010	LINOLEUM AND SIMILAR FLOOR COVERINGS
6592	36.033	0.557	3044	CARPETS AND OTHER TEXTILE FLOOR COVERINGS, KNOTTED, WHETHER OR NOT MADE-UP
6593	7.486	0.345	2334	TEXTILE FLOOR COVERINGS, KELEM, SCHUMACKS, KARAMANIE, AND SIMILAR HANDWOVEN RUGS
6594	6.911	0.646	2927	CARPETS AND OTHER TEXTILE FLOOR COVERINGS, TUFTED, WHETHER OR NOT MADE-UP
6595	4.922	0.673	3437	CARPETS AND OTHER TEXTILE FLOOR COVERINGS, WOVEN, N.E.S., WHETHER OR NOT MADE-UP
6596	3.789	0.453	3039	CARPETS AND OTHER TEXTILE FLOOR COVERINGS, N.E.S., WHETHER OR NOT MADE-UP
6611	16.480	0.132	1100	QUICKLIME, SLAKED LIME AND HYDRAULIC LIME (EXCLUDING CALCIUM OXIDE AND HYDROXIDE PROVIDED FOR UNDER SUBGROUP 522.6)
6612	0.813	0.541	1911	PORTLAND CEMENT, ALUMINOUS CEMENT, SLAG CEMENT, SUPERSULFATE CEMENT AND SIMILAR HYDRAULIC CEMENTS, WHETHER OR NOT COLORED OR IN THE FORM OF CLINKERS
6613	11.114	0.494	3757	MONUMENTAL OR BUILDING STONE, AND ARTICLES THEREOF
6618	2.229	0.279	1918	CONSTRUCTION MATERIALS OF ASBESTOS-CEMENT, FIBER-CEMENT AND UNFIRED NONMETALLIC MINERALS, N.E.S.
6623	0.291	0.350	2160	REFRACTORY BRICKS AND OTHER REFRACTORY CONSTRUCTION MATERIALS
6624	0.008	-0.030	2786	NONREFRACTORY CERAMIC BRICKS, TILES, PIPES AND SIMILAR PRODUCTS
6631	0.199	0.243	2162	MILLSTONES, GRINDING WHEELS AND THE LIKE, WITHOUT FRAMEWORKS, FOR GRINDING, SHARPENING, TRUEING, ETC., OF NATURAL OR ARTIFICIAL ABRASIVES OR CERAMICS
6632	2.165	0.610	2698	NATURAL OR ARTIFICIAL ABRASIVE POWDER OR GRAIN, ON A BASE OF TEXTILE MATERIAL, PAPER, PAPERBOARD OR OTHER MATERIALS, WHETHER NOT MADE UP
6633	0.145	0.019	1860	MANUFACTURES OF MINERAL MATERIALS, N.E.S. (OTHER THAN CERAMIC)
6635	0.752	0.422	1265	MINERAL WOOLS (SLAG WOOL, ROCK WOOL, ETC.); EXPANDED MINERAL MATERIALS (EXPANDED CLAYS ETC.); INSULATING (HEAT OR SOUND) MINERAL MATERIALS, N.E.S.
6637	1.272	0.473	2059	REFRACTORY CERAMIC GOODS (RETORTS, CRUCIBLES, MUFFLES, NOZZLES, PLUGS, ETC.), N.E.S.
6638	0.139	0.079	926	MANUFACTURES OF ASBESTOS; FRICTION MATERIALS
6639	0.605	0.167	1082	ARTICLES OF CERAMIC MATERIALS, N.E.S.
6641	0.991	0.414	1814	GLASS IN THE MASS, IN BALLS, RODS OR TUBES (UNWORKED); GLASS WASTE AND SCRAP
6643	1.762	0.141	1412	DRAWN GLASS AND BLOWN GLASS, IN SHEETS, WHETHER OR NOT HAVING AN ABSORBENT OR REFLECTING LAYER, BUT NOT OTHERWISE WORKED
6644	3.550	0.396	1727	FLOAT GLASS AND SURFACE GROUND OR POLISHED GLASS, IN SHEETS, WHETHER OR NOT HAVING AN ABSORBENT OR REFLECTING LAYER, BUT NOT OTHERWISE WORKED
6645	4.826	0.502	1321	CAST GLASS AND ROLLED GLASS, IN SHEETS OR PROFILES, WHETHER OR NOT HAVING AN ABSORBANT OR REFLECTING LAYER, BUT NOT OTHERWISE WORKED
6647	1.549	0.415	2780	SAFETY GLASS CONSISTING OF TOUGHENED (TEMPERED) OR LAMINATED GLASS
6648	0.134	0.288	2799	GLASS MIRRORS, FRAMED OR NOT
6649	0.034	-0.091	1200	GLASS, N.E.S.
6651	3.185	0.083	2994	GLASS CONTAINERS USED FOR CONVEYANCE OR PACKING OF GOODS; GLASS STOPPERS AND CLOSURES; GLASS INNERS FOR VACUUM VESSELS
6652	1.257	0.368	3570	GLASSWARE FOR TABLE, KITCHEN, TOILET, OFFICE, INDOOR DECORATION AND SIMILAR USE
6659	0.031	0.011	1314	ARTICLES MADE OF GLASS, N.E.S.
6661	4.933	0.482	3180	CERAMIC TABLEWARE, KITCHENWARE AND OTHER CERAMIC HOUSEHOLD OR TOILET ARTICLES
6662	0.642	0.439	2622	CERAMIC STATUETTES AND OTHER ORNAMENTAL CERAMIC ARTICLES
6671	NaN	NaN	624	PEARLS (NATURAL OR CULTURED), NOT STRUNG, MOUNTED OR SET; UNGRADED PEARLS (NATURAL OR CULTURED) TEMPORARILY STRUNG FOR TRANSPORT
6672	18.595	0.410	3041	DIAMONDS (OTHER THAN SORTED INDUSTRIAL DIAMONDS), WORKED OR NOT, BUT NOT MOUNTED OR SET
6673	0.096	-0.023	2463	PRECIOUS AND SEMIPRECIOUS STONES (NO DIAMONDS), NOT STRUNG, MOUNTED ETC.; UNGRADED PRECIOUS AND SEMIPRECIOUS STONES (NO DIAMONDS), STRUNG FOR TRANSPORT
6674	0.069	0.258	1452	SYNTHETIC OR RECONSTRUCTED PRECIOUS OR SEMIPRECIOUS STONES, NOT STRUNG, MOUNTED OR SET (INCLUDING UNGRADED STONES TEMPORARILY STRUNG FOR TRANSPORT)
6712	3.537	0.356	897	PIG IRON AND SPIEGELEISEN IN PIGS, BLOCKS AND OTHER PRIMARY FORMS
6713	0.177	0.677	1768	PIG IRON, SPIEGELEISEN, IRON OR STEEL GRANULES AND POWDERS; SPONGY FERROUS PRODUCTS AND IRON (AT LEAST 99.94% PURE) IN LUMPS, PELLETS OR SIMILAR FORMS
6714	2.018	0.242	1060	FERRONMANGANESE
6715	1.040	0.620	2180	FERROALLOYS, N.E.S.
6724	4.439	0.246	1179	IRON (UNDER 99.94% PURE) OR STEEL INGOTS AND OTHER PRIMARY FORMS
6726	2.318	0.511	1222	IRON OR NONALLOY STEEL SEMIFINISHED PRODUCTS, CONTAINING UNDER .25% (WT.) CARBON
6727	2.109	0.471	1095	IRON OR NONALLOY STEEL SEMIFINISHED PRODUCTS, CONTAINING NOT UNDER .25% (WT.) CARBON
6728	3.347	0.087	1541	ALLOY STEEL SEMIFINISHED PRODUCTS
6734	2.016	0.171	1188	IRON AND NONALLOY STEEL FLAT-ROLLED PRODUCTS, NOT CLAD ETC., COLD-ROLLED (COLD-REDUCED) ONLY, N.E.S.
6735	1.353	0.421	1252	IRON AND NONALLOY STEEL FLAT-ROLLED PRODUCTS, NOT CLAD, PLATED, ETC., FURTHER WORKED THAN HOT ROLLED OR COLD ROLLED (COLD-REDUCED), N.E.S.
6739	3.158	0.417	2292	FLAT-ROLLED PRODUCTS OF IRON OR NON-ALLOY STEEL, NOT CLAD, PLATED OR COATED AND NOT FURTHER WORKED THAN HOT-ROLLED OR COLD-ROLLED (COLD-REDUCED)
6741	3.776	0.156	1849	IRON AND NONALLOY STEEL FLAT-ROLLED PRODUCTS, PLATED OR COATED WITH ZINC
6742	2.747	0.409	1172	IRON AND NONALLOY STEEL FLAT-ROLLED PRODUCTS, PLATED OR COATED WITH TIN
6743	4.076	0.417	1356	FLAT-ROLLED PRODUCTS OF IRON OR NON-ALLOY STEEL, PAINTED, VARNISHED OR COATED WITH PLASTICS
6744	1.416	0.432	1365	IRON AND NONALLOY STEEL FLAT-ROLLED PRODUCTS, CLAD, PLATED OR COATED, N.E.S., NOT UNDER 600 MM WIDE
6745	3.397	0.346	1168	IRON AND NONALLOY STEEL FLAT-ROLLED PRODUCTS, CLAD, PLATED OR COATED, N.E.S., UNDER 600 MM WIDE
6751	1.839	0.057	1272	SILICON-ELECTRICAL STEEL FLAT-ROLLED PRODUCTS
6752	1.613	0.498	921	HIGH SPEED STEEL FLAT-ROLLED PRODUCTS
6753	2.056	0.621	1589	STAINLESS STEEL FLAT-ROLLED PRODUCTS, HOT-ROLLED ONLY
6754	2.303	0.450	1530	ALLOY STEEL N.E.S. FLAT-ROLLED PRODUCTS, HOT-ROLLED ONLY
6755	1.686	0.443	1704	STAINLESS STEEL FLAT-ROLLED PRODUCTS, COLD-ROLLED (COLD-REDUCED) ONLY
6756	3.057	0.252	1290	ALLOY STEEL N.E.S. FLAT-ROLLED PRODUCTS, COLD-ROLLED (COLD-REDUCED) ONLY
6757	1.952	0.380	1701	ALLOY STEEL FLAT-ROLLED PRODUCTS, N.E.S.
6761	2.072	0.677	1269	CONCRETE REINFORCING BARS OF IRON OR NON-ALLOY STEEL, AND BARS AND RODS OF FREE CUTTING STEEL, IN IRREGULARLY WOUND COILS
6762	2.185	0.582	1888	BARS AND RODS OF ALLOY STEEL, N.E.S., NOT FURTHER WORKED THAN HOT-ROLLED, DRAWN OR EXTRUDED, BUT INCLUDING THOSE TWISTED AFTER ROLLING
6763	1.205	0.773	1983	IRON AND STEEL BARS AND RODS, N.E.S., NOT FURTHER WORKED THAN COLD-FORMED OR COLD-FINISHED
6764	1.526	0.535	1603	BARS AND RODS OF ALLOY STEEL, N.E.S. NOT FURTHER WORKED THAN FORGED; BARS AND RODS OF TOOL STEEL, N.E.S. AND HOLLOW DRILL BARS AND RODS OF STEEL
6765	2.006	0.480	2518	BARS AND RODS OF IRON OR STEEL, N.E.S.
6768	1.267	0.446	2027	IRON AND STEEL ANGLES, SHAPES AND SECTIONS (EXCLUDING RAILS) AND SHEET PILING
6770	3.723	0.342	1637	IRON AND STEEL RAILWAY AND TRAMWAY TRACK CONSTRUCTION MATERIAL
6781	3.368	0.642	2649	IRON AND NONALLOY STEEL WIRE
6782	2.263	0.721	1939	STAINLESS STEEL AND OTHER ALLOY STEEL WIRE
6791	1.576	0.476	2608	IRON AND STEEL SEAMLESS TUBES, PIPES AND HOLLOW PROFILES
6793	3.120	0.337	1388	IRON AND STEEL TUBES AND PIPES, OTHER THAN SEAMLESS, HAVING INTERNAL AND EXTERNAL CIRCULAR CROSS-SECTIONS, WITH THE EXTERNAL DIAMETER OVER 406.4 MM
6794	4.385	0.363	2832	IRON AND STEEL TUBES, PIPES AND HOLLOW PROFILES, N.E.S.
6795	2.174	0.537	2963	IRON AND STEEL TUBE AND PIPE FITTINGS (COUPLINGS, ELBOWS, SLEEVES, ETC.)
6811	15.340	0.480	1952	SILVER (INCLUDING SILVER CLAD BASE METALS), UNWROUGHT, UNWORKED OR SEMIMANUFACTURED
6812	1.214	0.179	1714	PLATINUM AND OTHER PLATINUM GROUP METALS (INCLUDING METALS CLAD WITH PLATINUM GROUP METALS), UNWROUGHT, UNWORKED OR SEMIMANUFACTURED

Table A2 - Expenditure Elasticities and Forecast Performance at the Good Level

SITC Code	Expenditure Elasticity	Forecast Performance	Sample Size	Good Name
6821	22.069	0.174	1630	COPPER, REFINED AND UNREFINED; COPPER ANODES FOR ELECTROLYTIC REFINING; COPPER ALLOYS UNWROUGHT
6823	1.110	0.477	2290	COPPER BARS, RODS AND PROFILES
6824	4.815	0.522	2076	COPPER WIRE
6825	2.378	0.473	2000	COPPER PLATES, SHEETS AND STRIP, OVER .15 MM THICK
6826	1.529	0.241	1820	COPPER FOIL (WHETHER OR NOT PRINTED OR BACKED WITH MATERIAL) NOT OVER .15 MM THICK (EXCLUDING ANY BACKING); COPPER POWDERS AND FLAKES
6827	4.151	0.630	2616	COPPER TUBES, PIPES AND TUBE OR PIPE FITTINGS (E.G. COUPLINGS, ELBOWS AND SLEEVES)
6831	5.503	0.400	1358	NICKEL AND NICKEL ALLOYS, UNWROUGHT (EXCLUDING ELECTRO-PLATING ANODES)
6832	1.601	0.372	1923	NICKEL AND NICKEL ALLOYS, WORKED (EXCLUDING ELECTRO-PLATING ANODES)
6841	13.921	0.401	2098	ALUMINUM AND ALUMINUM ALLOYS, UNWROUGHT
6842	3.051	0.659	3451	ALUMINUM AND ALUMINUM ALLOYS, WORKED
6851	4.219	0.199	913	LEAD AND LEAD ALLOYS, UNWROUGHT
6852	0.580	0.508	1169	LEAD AND LEAD ALLOYS, WORKED
6861	3.995	0.086	1115	ZINC AND ZINC ALLOYS, UNWROUGHT
6863	3.351	0.090	1591	ZINC AND ZINC ALLOYS, WORKED
6871	4.192	0.259	1320	TIN AND TIN ALLOYS, UNWROUGHT
6872	1.922	-0.041	1112	TIN AND TIN ALLOYS, WORKED
6891	0.466	0.362	1874	TUNGSTEN (WOLFRAM), MOLYBDENUM, TANTALUM AND MAGNESIUM, UNWROUGHT (INCLUDING WASTE AND SCRAP)
6898	2.727	0.456	2193	INTERMEDIATE COBALT METALLURGICAL PRODUCTS; COBALT, CADMIUM, TITANIUM AND ZIRCONIUM, UNWROUGHT (INCLUDING WASTE AND SCRAP)
6899	0.465	0.459	2193	BASE METALS, N.E.S., AND CERAMETS, AND ARTICLES THEREOF, N.E.S. (INCLUDING WASTE AND SCRAP)
6911	6.923	0.382	3379	METAL STRUCTURES (EXCLUDING PREFABRICATED BUILDINGS) AND PARTS OF STRUCTURES (BRIDGES, LOCK-GATES, DOOR FRAMES, PREPARED SHAPES ETC.) OF IRON OR STEEL
6912	8.785	0.558	2755	METAL STRUCTURES (EXCLUDING PREFABRICATED BUILDINGS) AND PARTS OF STRUCTURES (BRIDGES, LOCK-GATES, DOOR FRAMES, PREPARED SHAPES, ETC.) OF ALUMINUM
6921	3.260	0.275	2110	METAL RESERVOIRS, TANKS, VATS AND SIMILAR CONTAINERS WITH A CAPACITY OF OVER 300 LITERS, OF IRON, STEEL OR ALUMINUM
6924	0.028	0.429	3232	METAL TANKS, CASKS, DRUMS, CANS, BOXES AND SIMILAR CONTAINERS WITH A CAPACITY OF NOT OVER 300 LITERS, OF IRON, STEEL OR ALUMINUM
6931	1.047	0.350	3176	STRANDED WIRE, ROPES, CABLES, PLAITED BANDS, ETC., OF IRON, STEEL, COPPER OR ALUMINUM, NOT ELECTRICALLY INSULATED
6932	2.740	-0.030	1091	BARBED WIRE OF IRON OR STEEL; TWISTED HOOP OR SINGLE FLAT WIRE, BARBED OR NOT AND LOOSELY TWISTED DOUBLE WIRE USED FOR FENCING, OF IRON OR STEEL
6935	3.163	0.474	2125	WIRE CLOTH (INCLUDING ENDLESS BANDS), GRILL, NETTING AND FENCING, AND EXPANDED METAL, OF IRON, STEEL OR COPPER
6941	1.661	0.340	2566	NAILS, TACKS, STAPLES (EXCLUDING STAPLES IN STRIPS FOR OFFICE ETC. USE), AND SIMILAR ARTICLES (EXCLUDING ARTICLES WITH COPPER HEADS), OF IRON OR STEEL
6942	3.458	0.515	3452	SCREWS, BOLTS, NUTS, SCREW HOOKS, RIVETS, WASHERS AND SIMILAR ARTICLES, OF IRON OR STEEL
6943	1.417	0.485	2186	NAILS, TACKS, STAPLES (EXCLUDING STAPLES IN STRIPS FOR OFFICE ETC. USE), SIMILAR ARTICLES, AND SCREWS, BOLTS, NUTS, RIVETS, WASHERS, ETC., OF COPPER
6944	0.887	0.501	1874	NAILS, TACKS, STAPLES (EXCLUDING STAPLES IN STRIPS FOR OFFICE ETC. USE), SCREWS, BOLTS, NUTS, RIVETS, WASHERS AND SIMILAR ARTICLES, OF ALUMINUM
6951	0.899	0.311	1606	HAND TOOLS INCL SPADES SHOVELS MATTOCKS PICKS HOES FORKS & RAKES; AXES, BILL HOOKS SIM TOOLS; PRUNERS; SCYTHES, SICKLES ETC F AGR HORTICLTRE R FOREST
6952	0.280	0.530	2114	HAND SAWS, FILES, RASPS, PLIERS, PINCERS, TWEEZERS, METAL CUTTING SHEARS, PIPE CUTTERS AND SIMILAR HAND TOOLS
6953	0.674	0.169	1311	SPANNERS AND WRENCHES, HAND-OPERATED (INCLUDING TORQUE METER WRENCHES BUT EXCLUDING TAP WRENCHES); INTERCHANGEABLE SPANNER SOCKETS
6954	0.049	0.081	1481	HAND TOOLS, N.E.S.; BLOW LAMPS; VICES, CLASPS, ETC.; ANVILS; PORTABLE FORGES; HAND OR PEDAL OPERATED GRINDING WHEELS WITH FRAMEWORKS
6955	0.004	0.226	2359	BLADES FOR SAWS OF ALL KINDS (INCLUDING SLITTING, SLOTTING OR TOOTHLESS SAW BLADES)
6956	0.061	0.270	2361	KNIVES AND CUTTING BLADES FOR MACHINES OR MECHANICAL APPLIANCES; INTERCHANGEABLE TOOLS FOR HAND OR MACHINE TOOLS; TOOL PLATES, STICKS, TIPS, ETC.
6957	2.193	0.032	1095	TOOL SETS OF TWO OR MORE OF THE TOOLS PROVIDED FOR IN SUBGROUPS 695.2 THROUGH 695.5 (SAWS, FILES, WRENCHES, DRILLS, ETC.), PACKAGED FOR RETAIL SALE
6963	0.185	0.112	1817	RAZORS AND RAZOR BLADES (INCLUDING RAZOR BLADE BLANKS IN STRIPS)
6964	2.193	0.315	1639	SCISSORS, TAILORS' SHEARS AND SIMILAR SHEARS, AND BLADES THEREFOR
6965	0.464	0.307	1580	HAIR CLIPPERS, BUTCHERS' OR KITCHEN CLEAVERS, CHOPPERS ETC. AND OTHER ARTICLES OF CUTLERY, N.E.S.; MANICURE OR PEDICURE SETS AND INSTRUMENTS
6966	2.488	0.195	1709	SPOONS, FORKS, LADLES, SKIMMERS, CAKE-SERVERS, NONCUTTING FISH-KNIVES AND BUTTER-KNIVES, AND SIMILAR KITCHEN OR TABLEWARE
6968	1.894	0.646	2484	KNIVES WITH CUTTING BLADES, SERRATED OR NOT (INCLUDING PRUNING KNIVES), OTHER THAN KITCHEN OR TABLE KNIVES OF SUBGROUP 695.6, AND BLADES THEREFOR
6973	3.230	0.397	2264	DOMESTIC COOKING OR HEATING EQUIPMENT, NONELECTRIC, AND PARTS THEREOF, OF IRON, STEEL OR COPPER
6974	1.057	0.204	2836	TABLE, KITCHEN OR OTHER HOUSEHOLD ARTICLES AND PARTS, N.E.S., OF IRON, STEEL, COPPER OR ALUMINUM (INCLUDING POT SCOURERS); IRON OR STEEL WOOL
6975	1.154	0.583	2008	SANITARY WARE AND PARTS THEREOF, N.E.S., OF IRON, STEEL, COPPER OR ALUMINUM
6978	8.162	0.498	3121	HOUSEHOLD APPLIANCES, DECORATIVE ARTICLES, FRAMES AND MIRRORS, OF BASE METAL, N.E.S.
6991	3.424	0.735	3710	LOCKSMITHS' WARES, SAFES, STRONG BOXES, ETC. AND HARDWARE, N.E.S., OF BASE METAL
6992	1.879	0.559	2142	CHAIN (OTHER THAN ARTICULATED LINK CHAIN) AND PARTS THEREOF, OF IRON OR STEEL
6993	0.092	0.393	2090	PINS AND NEEDLES OF IRON OR STEEL; BASE METAL BEADS AND SPANGLES; AND BASE METAL FITTINGS USED FOR CLOTHING, HANDBAGS, TRAVEL GOODS, ETC.
6994	2.905	0.767	2803	SPRINGS AND LEAVES FOR SPRINGS, OF IRON, STEEL OR COPPER
6995	3.067	0.578	3088	MISCELLANEOUS ARTICLES OF BASE METAL
6996	0.007	0.064	3693	ARTICLES OF IRON OR STEEL, N.E.S.
6997	2.424	0.274	3919	ARTICLES, N.E.S., OF COPPER, NICKEL, ALUMINUM, LEAD, ZINC AND TIN
6998	2.796	0.129	2054	SEMIMANUFACTURES AND ARTICLES OF COBALT, CADMIUM, TITANIUM AND ZIRCONIUM, N.E.S.
6999	1.908	0.022	2051	SEMIMANUFACTURES AND ARTICLES OF TUNGSTEN (WOLFRAM), MOLYBDENUM, TANTALUM, MAGNESIUM, OR OTHER BASE METALS, N.E.S.
7111	17.761	0.109	1041	STEAM OR OTHER VAPOR GENERATING BOILERS (EXCEPT CENTRAL HEATING BOILERS PRODUCING ONLY LOW PRESSURE STEAM); SUPER-HEATED WATER BOILERS
7112	9.910	-0.115	1046	AUXILIARY PLANT FOR USE WITH STEAM GENERATING AND CENTRAL HEATING BOILERS; CONDENSERS FOR STEAM OR OTHER VAPOR POWER UNITS
7119	1.445	0.120	846	PARTS FOR STEAM GENERATING OR OTHER VAPOR GENERATING BOILERS AND AUXILIARY PLANTS FOR USE WITH BOILERS
7121	1.028	-0.200	713	STEAM TURBINES AND OTHER VAPOR TURBINES
7128	1.027	0.254	792	PARTS FOR STEAM TURBINES AND OTHER VAPOR TURBINES
7131	0.838	0.643	2077	INTERNAL COMBUSTION PISTON ENGINES FOR AIRCRAFT, AND PARTS THEREOF, N.E.S.
7132	24.413	0.552	2242	INTERNAL COMBUSTION PISTON ENGINES FOR ROAD VEHICLES, SELF PROPELLED WORKS TRUCKS, WHEELED TRACTORS, ETC., TANKS AND OTHER ARMORED FIGHTING VEHICLES
7133	4.305	0.554	1532	INTERNAL COMBUSTION PISTON ENGINES, MARINE PROPULSION
7138	4.866	0.581	2054	INTERNAL COMBUSTION PISTON ENGINES, N.E.S.
7139	1.752	0.600	3740	PARTS, N.E.S. FOR INTERNAL COMBUSTION PISTON ENGINES FOR ROAD VEHICLES, ETC., FOR MARINE PROPULSION ENGINES AND INTERNAL COMBUSTION ENGINES, N.E.S.
7144	1.204	-0.040	1036	REACTION ENGINES
7148	5.652	0.310	1042	GAS TURBINES, N.E.S.
7149	0.679	-0.366	1004	PARTS OF TURBOJET ENGINES AND GAS TURBINES, N.E.S.
7161	0.732	0.593	2650	ELECTRIC MOTORS OF AN OUTPUT NOT EXCEEDING 37.5 W
7162	0.506	0.573	2751	ELECTRIC MOTORS OF AN OUTPUT EXCEEDING 37.5 W AND GENERATORS, DC
7163	1.266	0.612	3096	ELECTRIC MOTORS OF AN OUTPUT EXCEEDING 37.5 W AND GENERATORS, AC
7164	0.299	0.196	1320	ELECTRIC ROTARY CONVERTERS
7165	2.020	0.211	1835	ELECTRIC GENERATING SETS
7169	0.022	0.144	1219	PARTS N.E.S. FOR USE SOLELY OR PRINCIPALLY WITH ELECTRIC MOTORS, ELECTRIC GENERATORS, ELECTRIC GENERATING SETS AND ROTARY CONVERTERS
7181	1.000	-0.006	748	HYDRAULIC TURBINES AND WATER WHEELS, AND PARTS THEREOF
7187	1.066	-0.107	794	NUCLEAR REACTORS, AND PARTS THEREOF; FUEL ELEMENTS NON-IRRADIATED, FOR NUCLEAR REACTORS
7189	0.744	0.558	2900	ENGINES AND MOTORS, N.E.S. (E.G., WIND ENGINES AND HOT AIR ENGINES) AND PARTS THEREOF, INCLUDING PARTS OF REACTION ENGINES (OTHER THAN TURBOJET PARTS)
7211	0.588	0.527	1889	AGRICULTURAL, HORTICULTURAL OR FORESTRY MACHINERY FOR SOIL PREPARATION OR CULTIVATION; LAWN OR SPORTS GROUND ROLLERS; AND PARTS THEREOF
7212	0.976	0.314	2171	HARVESTING OR THRESHING MACHINERY; GRASS OR HAY MOWERS; CLEANING, SORTING AND GRADING MACHINERY FOR EGGS, FRUIT, SEED, ETC.; PARTS THEREOF, N.E.S.
7213	0.056	0.170	1176	MILKING MACHINES AND DAIRY MACHINERY AND PARTS THEREOF
7219	0.169	0.290	1953	AGRICULTURAL, HORTICULTURAL, FORESTRY, POULTRY-KEEPING OR BEE-KEEPING MACHINERY, N.E.S., AND PARTS THEREOF, N.E.S.
7223	2.762	0.393	1133	TRACK-LAYING TRACTORS
7224	3.151	0.359	1751	WHEELED TRACTORS (OTHER THAN MECHANICAL HANDLING EQUIPMENT)
7231	6.876	0.400	1216	BULLDOZERS, ANGLEDZERS, GRADERS AND LEVELERS, SELF-PROPELLED
7232	3.175	0.695	1772	MECHANICAL SHOVELS, EXCAVATORS AND SHOVEL-LOADERS, SELF-PROPELLED
7233	1.514	0.555	1647	MOVING, GRADING, LEVELING, SCRAPPING, EXCAVATING, ETC. MACHINERY, FOR EARTH, MINERALS OR ORES, SELF-PROPELLED, N.E.S.
7234	2.769	0.270	2043	CONSTRUCTION AND MINING MACHINERY, N.E.S.
7239	0.243	0.325	2036	PARTS N.E.S., OF CIVIL ENGINEERING ETC. MACHINERY, INCLUDING PARTS OF MINING AND PUBLIC WORKS MACHINERY (HEADING 723) AND CRANES ETC. (HEADING 744.3)
7243	0.313	0.026	1566	SEWING MACHINES (NOT BOOK-SEWING MACHINES), SEWING MACHINE FURNITURE, BASESAND COVERS, AND PARTS THEREOF; SEWING MACHINE NEEDLES
7244	0.681	-0.067	1502	TEXTILE MACHINERY FOR EXTRUDING, DRAWING, TEXTURING, SPINNING, WINDING, ETC. TEXTILE MATERIALS, FIBERS AND YARNS; PARTS AND ACCESSORIES THEREOF
7245	1.245	0.472	1608	TEXTILE MACHINERY FOR WEAVING, KNITTING, STITCH-BONDING, ETC. AND MAKING TULLE, LACE, EMBROIDERY, BRAID, ETC.; MACHINES FOR FELT PREPARATION, ETC.
7246	0.146	0.473	1229	AUXILIARY TEXTILE MACHINERY FOR PREPARING AND/OR PRODUCING FIBERS AND YARNS OR WEAVING, KNITTING, STITCH-BONDING, ETC. MACHINES; PARTS, ETC., N.E.S.
7247	1.718	0.275	1825	TEXTILE MACHINERY FOR WASHING, (OVER 10 KG DRY), WRINGING, DRYING, IRONING, BLEACHING, DYEING, ETC. YARN, FABRIC OR ARTICLES; TEXTILE MACHINERY N.E.S.
7248	1.151	-0.095	1145	LEATHER MACHINERY FOR PREPARING, TANNING OR WORKING HIDES, SKINS OR LEATHER OR FOR MAKING OR REPAIRING FOOTWEAR OR OTHER ARTICLES; PARTS THEREOF
7249	NaN	NaN	624	PARTS FOR TEXTILE MACHINERY DESIGNED FOR WASHING, DRYING, BLEACHING, DYEING, ETC. YARN, FABRIC OR ARTICLES AND HOUSEHOLD TYPE LAUNDRY EQUIPMENT N.E.S.
7251	1.630	0.363	1387	MACHINERY FOR MAKING PULP OF FIBROUS CELLULOSIC MATERIAL OR FOR MAKING OR FINISHING PAPER OR PAPERBOARD
7252	1.224	0.063	1875	MACHINERY FOR MAKING UP PAPER PULP, PAPER OR PAPERBOARD, N.E.S. (INCLUDING PAPER CUTTING MACHINES OF ALL KINDS)
7259	NaN	NaN	624	PARTS OF PAPER MILL AND PULP MILL MACHINERY, PAPER CUTTING MACHINES AND MACHINERY FOR THE MANUFACTURE OF PAPER ARTICLES
7263	0.367	0.270	1866	TYPESETTING AND TYPEFOUNDING MACHINERY ETC. FOR MAKING PRINTING TYPE ETC.; PRINTING BLOCKS, PLATES, LITHOGRAPHIC STONES AND OTHER PRINTING COMPONENTS
7265	5.897	0.151	1269	OFFSET PRINTING MACHINERY
7266	0.616	0.090	1256	PRINTING MACHINERY, N.E.S.; MACHINES FOR USES ANCILLARY TO PRINTING
7268	0.478	0.402	1440	BOOKBINDING MACHINERY (INCLUDING BOOK-SEWING MACHINES); PARTS THEREOF
7269	NaN	NaN	624	PARTS FOR TYPESETTING AND TYPEFOUNDING MACHINERY, APPARATUS ETC.; PARTS OF PRINTING MACHINERY AND MACHINES FOR USES ANCILLARY TO PRINTING
7271	0.905	0.072	1417	MACHINERY USED IN THE GRAIN MILLING INDUSTRY OR FOR THE WORKING OF CEREALS OR DRIED LEGUMINOUS VEGETABLES (OTHER THAN FARM TYPE MACHINERY)

Table A2 - Expenditure Elasticities and Forecast Performance at the Good Level

SITC Code	Expenditure Elasticity	Forecast Performance	Sample Size	Good Name
7272	0.616	0.153	2513	FOOD PROCESSING MACHINERY AND PARTS THEREOF, N.E.S.
7281	0.781	0.277	2318	MACHINE TOOLS SPECIALIZED FOR PARTICULAR INDUSTRIES; PARTS AND ACCESSORIES THEREOF, N.E.S.
7282	2.172	0.224	1251	MACHINES&APPS USED FOR MANUFACTURE OF SEMI-CONDUCTOR DEVICES, ELECTRONIC INTEGRATED CIRCUITS OR FLAT PANEL DISPLAYS; PARTS AND ACCESSORIES
7283	1.101	0.567	2100	MACHINERY FOR SORTING, WASHING, CRUSHING OR MIXING EARTH, STONE, ORES ETC.; MACHINERY FOR SHAPING SOLID MINERAL FUELS, CERAMIC PASTES, ETC.; PARTS
7284	0.033	-0.063	3301	MACHINERY AND MECHANICAL APPLIANCES SPECIALIZED FOR A PARTICULAR INDUSTRY, N.E.S.
7285	NaN	NaN	624	PARTS, N.E.S. OF MACHINERY FOR PUBLIC WORKS ETC., FOR PREPARING ANIMAL OR FIXED VEGETABLE FATS AND OILS, AND SPECIALIZED FOR PARTICULAR INDUSTRIES
7311	1.957	0.198	1714	MACHINE TOOLS FOR REMOVAL OF MATERIAL, BY LASER, OTHER LIGHT OR PHOTON BEAM, ULTRASONIC, ELECTRO-DISCHARGE, ELECTRO-CHEMICAL, ELECTRON BEAM, ETC.
7312	4.267	0.509	1298	MACHINE CENTERS, UNIT CONSTRUCTION MACHINES (SINGLE STATION) AND MULTISTATION TRANSFER MACHINES FOR WORKING METAL
7313	4.809	0.575	1736	LATHES FOR REMOVING METAL
7314	1.392	0.527	1672	WAY-TYPE UNIT HEAD MACHINES FOR DRILLING, BORING ETC. METAL AND OTHER MACHINE TOOLS FOR DRILLING OR BORING METAL
7315	1.682	0.440	1500	MACHINE TOOLS FOR MILLING, THREADING OR TAPPING BY REMOVING METAL (OTHER THAN LATHES OR HAND TOOLS)
7316	1.606	0.242	1933	MACHINE TOOLS FOR DEBURRING, SHARPENING, GRINDING, HONING, POLISHING AND OTHERWISE FINISHING METAL (OTHER THAN GEAR CUTTING, ETC. MACHINES)
7317	3.497	0.491	1873	MACHINE TOOLS FOR PLANING, SHAPING, SLOTTING, GEAR CUTTING, FINISHING, ETC. BY REMOVING METAL, SINTERED METAL CARBIDES OR CERMETS, N.E.S.
7331	2.002	0.613	2337	MACHINE TOOLS (INCLUDING PRESSES) FOR WORKING METAL BY FORGING, HAMMERING, DIE-STAMPING, BENDING, FOLDING, SHEARING ETC.; METAL WORKING PRESSES N.E.S.
7339	1.042	0.571	1641	MACHINE TOOLS FOR WORKING METAL, SINTERED METAL CARBIDES OR CERMETS, WITHOUT REMOVING MATERIAL, N.E.S.
7351	0.490	-0.038	988	WORK HOLDERS, SELF-OPENING DIEHEADS AND DIVIDING HEADS FOR MACHINE TOOLS; TOOL HOLDERS FOR MACHINE TOOLS AND FOR ANY TOOL FOR WORKING IN THE HAND
7359	0.215	-0.120	1814	PARTS, N.E.S., AND ACCESSORIES SUITABLE FOR USE WITH METALWORKING MACHINE TOOLS, WHETHER OR NOT REMOVING METAL OR OTHER MATERIAL
7371	0.836	0.133	1291	CONVERTERS, LADLES, INGOT MOLDS AND CASTING MACHINES USED IN METALLURGY OR METAL FOUNDRIES, AND PARTS THEREOF, N.E.S.
7372	0.097	0.470	2139	METAL-ROLLING MILLS, ROLLS AND OTHER PARTS FOR METAL-ROLLING MILLS
7373	0.317	0.437	2311	ELECTRIC LASER, OTHER LIGHT OR PHOTON BEAM, ETC. APPARATUS, FOR SOLDERING OR WELDING ETC.; ELECTRIC MACHINES FOR HOT SPRAYING OF METAL; PARTS, N.E.S.
7374	0.218	0.153	1609	MACHINERY AND APPARATUS FOR SOLDERING, BRAZING OR WELDING, WHETHER OR NOT CAPABLE OF CUTTING, N.E.S.; GAS-OPERATED SURFACE TEMPERING MACHINES; PARTS
7412	0.441	0.088	1326	FURNACE BURNERS LIQUID FUEL, PULVERIZED SOLID FUEL OR GAS; MECHANICAL STOKERS, INCL GRATES, ASH DISCHARGES SIMILAR APPLIANCES; AND PARTS THEREOF, NES
7413	0.795	0.573	2204	INDUSTRIAL OR LABORATORY FURNACES AND OVENS, ETC., AND PARTS THEREOF
7414	0.218	0.161	1900	REFRIGERATORS, FREEZERS AND OTHER REFRIGERATING AND FREEZING EQUIPMENT (ELECTRIC OR OTHER), OTHER THAN HOUSEHOLD TYPE, AND PARTS THEREOF
7415	1.733	0.306	2475	AIR CONDITIONING MACHINES HAVING A MOTOR-DRIVEN FAN AND ELEMENTS FOR CHANGING THE TEMPERATURE AND HUMIDITY, AND PARTS THEREOF
7417	0.958	0.225	2623	GAS GENERATORS, DISTILLING OR RECTIFYING PLANT, HEAT EXCHANGE UNITS AND MACHINERY FOR LIQUEFYING AIR OR OTHER GASES
7418	0.941	0.382	2951	TEMPERATURE CHANGING INDUSTRIAL AND LABORATORY MACHINERY AND EQUIPMENT, ELECTRICALLY HEATED OR NOT, FOR TREATING MATERIALS; WATER HEATERS, NONELECTRIC
7419	NaN	NaN	624	PARTS, N.E.S. FOR TEMPERATURE CHANGING INDUSTRIAL AND LABORATORY MACHINERY AND EQUIPMENT
7421	0.383	0.216	2015	PUMPS FITTED OR DESIGNED TO BE FITTED WITH A MEASURING DEVICE
7422	5.248	0.521	3037	FUEL, LUBRICATING OR COOLING MEDIUM PUMPS FOR INTERNAL COMBUSTION PISTON ENGINES
7423	1.677	0.508	928	CONCRETE PUMPS
7424	3.632	0.419	2486	RECIPROCATING POSITIVE DISPLACEMENT PUMPS, N.E.S.
7425	1.392	0.576	2670	ROTARY POSITIVE DISPLACEMENT PUMPS, N.E.S.
7426	0.408	0.459	2488	CENTRIFUGAL PUMPS, N.E.S.
7427	0.232	0.287	2670	PUMPS FOR LIQUIDS, N.E.S., AND LIQUID ELEVATORS
7429	NaN	NaN	624	PARTS OF PUMPS FOR LIQUIDS AND LIQUID ELEVATORS
7431	1.999	0.388	3349	AIR OR VACUUM PUMPS, AIR OR OTHER GAS COMPRESSORS, VENTILATING OR RECYCLING HOODS (OTHER THAN COOKER HOODS) INCORPORATING A FAN
7434	1.714	0.340	2800	FANS AND COOKER HOODS INCORPORATING A FAN
7435	1.012	0.338	1751	CENTRIFUGES (INCLUDING CENTRIFUGAL DRYERS), N.E.S.
7436	0.129	-0.077	2000	FILTERING AND PURIFYING MACHINERY AND APPARATUS, FOR LIQUIDS OR GASES
7438	0.076	0.041	1319	PARTS FOR AIR OR VACUUM PUMPS, AIR OR OTHER GAS COMPRESSORS AND FANS; PARTS OF VENTILATING, RECYCLING OR COOKER HOODS INCORPORATING A FAN
7439	NaN	NaN	624	PARTS OF CENTRIFUGES (INCLUDING CENTRIFUGAL DRYERS) AND FILTERING OR PURIFYING MACHINERY AND APPARATUS
7441	0.221	0.377	2051	WORKS TRUCKS, OF A TYPE USED IN FACTORIES, WAREHOUSES, ETC.; TRACTORS OF A TYPE USED ON RAILWAY STATION PLATFORMS; AND PARTS THEREOF, N.E.S.
7442	0.622	0.230	2080	PULLEY TACKLE AND HOISTS (OTHER THAN SKIP HOISTS); WINCHES AND CAPSTANS
7443	1.271	0.400	1841	SHIPS' DERRICKS; CRANES (INCLUDING CABLE CRANES); MOBILE LIFTING FRAMES; STRADDLE CARRIERS AND WORKS TRUCKS FITTED WITH A CRANE
7444	1.873	0.500	2011	JACKS; HOISTS OF A KIND USED FOR RAISING VEHICLES
7447	2.354	0.694	2230	CONTINUOUS-ACTION ELEVATORS AND CONVEYORS, FOR GOODS OR MATERIALS
7448	2.142	0.425	2398	LIFTING, HANDLING, LOADING OR UNLOADING MACHINERY, N.E.S.
7449	NaN	NaN	624	PARTS FOR LIFTING AND HANDLING MACHINERY, HOISTS, JACKS, CONTINUOUS ACTION ELEVATORS AND CONVEYORS; PARTS FOR LOADING, UNLOADING ETC. MACHINES N.E.S.
7451	3.267	0.321	2293	TOOLS FOR WORKING IN THE HAND, PNEUMATIC OR WITH SELF-CONTAINED NONELECTRIC MOTOR, AND PARTS THEREOF
7452	1.726	0.713	2735	DISH WASHING MACHINES (NOT HOUSEHOLD TYPE); MACHINERY FOR CLEANING, FILLING, SEALING, LABELING, ETC. CONTAINERS; MACHINERY FOR AERATING BEVERAGES
7453	0.597	0.512	2331	WEIGHING MACHINERY (EXCEPT BALANCES OF 5 CG OR BETTER), INCLUDING WEIGHT-OPERATED COUNTING ETC. MACHINES; WEIGHING MACHINE WEIGHTS; AND PARTS THEREOF
7456	0.014	0.091	2545	MECHANICAL APPLIANCES FOR PROJECTING, DISPERSING OR SPRAYING LIQUIDS OR POWDERS; FIRE EXTINGUISHERS; SPRAY GUNS; STEAM OR SAND BLASTING MACHINES, ETC.
7459	1.102	0.266	1964	NONELECTRICAL APPLIANCES, N.E.S. AND PARTS THEREOF
7461	0.177	0.552	2627	BALL BEARINGS
7462	0.255	0.325	2067	TAPERED ROLLER BEARINGS (INCLUDING CONE AND TAPERED ROLLER ASSEMBLIES)
7463	1.542	0.321	1921	SPHERICAL ROLLER BEARINGS
7464	0.491	0.504	1638	NEEDLE ROLLER BEARINGS
7465	1.019	0.453	1960	CYLINDRICAL ROLLER BEARINGS, N.E.S.
7468	0.442	0.146	1573	BALL OR ROLLER BEARINGS (INCLUDING COMBINED BALL/ROLLER BEARINGS), N.E.S.
7469	1.590	0.531	2369	PARTS OF BALL AND ROLLER BEARINGS
7471	0.707	0.304	2399	PRESSURE-REDUCING VALVES
7472	1.443	0.659	2693	VALVES FOR OLEOHYDRAULIC OR PNEUMATIC TRANSMISSIONS
7473	0.217	0.526	2454	CHECK VALVES
7474	0.743	0.447	2536	SAFETY OR RELIEF VALVES
7478	1.149	0.678	3551	TAPS, COCKS, VALVES AND SIMILAR APPLIANCES, N.E.S.
7479	3.099	0.716	3311	PARTS FOR TAPS, COCKS, VALVES AND SIMILAR APPLIANCES FOR PIPES, BOILER SHELLS, TANKS, ETC.
7481	1.504	0.570	2881	TRANSMISSION SHAFTS (INCLUDING CAM AND CRANK SHAFTS) AND CRANKS
7482	0.352	0.399	2731	BEARING HOUSINGS AND PLAIN SHAFT BEARINGS
7483	4.755	0.600	2353	ARTICULATED LINK CHAIN AND PDS THEREOF, OF IRON AND STEEL
7484	0.381	0.472	2660	GEARS AND GEARING; BALL SCREWS; GEAR BOXES AND OTHER SPEED CHANGERS (INCLUDING TORQUE CONVERTERS)
7485	NaN	NaN	624	FLYWHEELS AND PULLEYS (INCLUDING PULLEY BLOCKS)
7486	0.384	0.254	1936	CLUTCHES AND SHAFT COUPLINGS (INCLUDING UNIVERSAL JOINTS)
7489	0.190	0.443	2014	PARTS, N.E.S., FOR TRANSMISSION SHAFTS AND CRANKS, BEARING HOUSINGS, GEARS, GEARING, BALL SCREWS, GEAR BOXES, FLYWHEELS AND PULLEYS, CLUTCHES, ETC.
7491	0.566	0.080	3184	MOLDING BOXES FOR METAL FOUNDRY; MOLD BASES; MOLDING PATTERNS; MOLDS FOR METAL (NOT INGOT), METAL CARBIDES, GLASS, MINERALS, RUBBER OR PLASTICS
7492	0.772	0.430	2370	GASKETS AND SIMILAR JOINTS OF METAL SHEETING COMBINED WITH OTHER MATERIALS OR LAYERS OF METAL; SETS OR ASSORTMENTS OF GASKETS AND SIMILAR JOINTS ETC.
7499	0.296	0.504	2605	MACHINERY PARTS NOT CONTAINING ELECTRICAL CONNECTORS, INSULATORS, COILS, CONTACTS OR OTHER ELECTRIC FEATURES, N.E.S.
7511	1.338	0.209	1063	TYPEWRITERS (OTHER THAN TYPEWRITERS INCORPORATING A CALCULATING DEVICE); WORD PROCESSING MACHINES
7512	1.873	0.243	2184	CALCULATING MACHINES; ACCOUNTING MACHINES, POSTAGE-FRANKING MACHINES, TICKET-ISSUING MACH AND SIM MACH INCORPORATING A CALCULATING DEVICE; CASH REGIST
7513	4.613	0.257	986	PHOTOCOPIING APPARATUS INCORPORATING AN OPTICAL SYSTEM OR OF CONTACT TYPE AND THERMOCOPIING APPARATUS
7519	3.478	0.008	2530	OFFICE MACHINES (INCLUDING HECTOGRAPH OR STENCIL DUPLICATING, ADDRESSING, AUTOMATIC BANKNOTE DISPENSERS, COIN SORTING, ETC. MACHINES), N.E.S.
7521	1.247	0.057	1185	ANALOG OR HYBRID (ANALOG-DIGITAL) DATA PROCESSING MACHINES
7522	164.289	0.261	2733	DIGITAL AUTOMATIC DATA PROCESSING MACHINES CONTAINING IN THE SAME HOUSING A CENTRAL PROCESSING UNIT AND AN INPUT AND OUTPUT UNIT
7523	15.022	0.521	3124	DIGITAL PROCESSING UNITS WHETHER OR NOT PRESENTED WITH THE REST OF THE SYSTEM WHICH MAY CONTAIN STORAGE UNITS, INPUT UNITS OR OUTPUT UNITS
7526	8.803	0.132	3004	INPUT OR OUTPUT UNITS WHETHER OR NOT PRESENTED WITH THE REST OF A SYSTEM AND WHETHER OR NOT CONTAINING STORAGE UNITS IN ONE HOUSING IN DATA PROCESSING
7527	21.162	0.270	2882	STORAGE UNITS, WHETHER OR NOT PRESENTED WITH THE REST OF THE SYSTEM FOR DATA PROCESSING
7529	4.536	0.495	3306	DATA PROCESSING EQUIPMENT, N.E.S.
7591	0.762	-0.340	737	PARTS AND ACCESSORIES OF PHOTOCOPIING AND THERMOCOPIING APPARATUS
7599	0.640	0.108	2606	PARTS AND ACCESSORIES FOR USE SOLELY OR PRINCIPALLY WITH OFFICE MACHINES (EXCEPT PHOTO- OR THERMO-COPY) AND AUTOMATIC DATA PROCESSING MACHINES, ETC.
7611	33.230	0.117	1466	TV RECEIVERS, COLOR, INCL VIDEO MONITORS & PROJECTORS), WHET OR NT INCORP RADIOBROADCAST RECEIVERS OR SOUND OR VIDEO RECORDING OR REPRODUCING APPARATUS
7612	2.566	-0.293	1000	TV RECEIVERS, BLACK/WHITE R OTH MONOCHROME (INCL VIDEO MONITRS & PROJCTRS), WHETH INCORP RADIO-BROADCAST RECEIVERS OR SOUND OR VIDEO RECORD/REPRODUC APP
7613	2.715	0.457	1028	CATHODE-RAY TUBE MONITORS
7614	52.708	0.426	1518	MONITORS, NESOI
7615	6.776	0.041	1071	PROJECTORS, NOT INCORPORATING TV RECEP APPS
7616	325.874	0.289	1238	RECEPTION APPARATUS FOR TV, WHETHER OR NOT INCORPORATING RADIO-BROADCAST OR SOUND OR VIDEO RECORDING OR REPRODUCING APPARATUS
7621	6.788	0.555	1907	RADIOBROADCAST RECEIVERS, USING AN EXTERNAL POWER SOURCE, AS IN MOTOR VEHICLES (INCLUDING APPARATUS ALSO RECEIVING RADIOTELEPHONY OR RADIOTELEGRAPHY)
7622	16.089	-0.277	1667	RADIOBROADCAST RECEIVERS, OPERATING WITHOUT AN EXTERNAL POWER SOURCE (INCLUDING APPARATUS CAPABLE OF ALSO RECEIVING RADIOTELEPHONY OR RADIOTELEGRAPHY)
7628	18.570	0.199	1799	RADIOBROADCAST RECEIVERS (INCLUDING APPARATUS CAPABLE OF ALSO RECEIVING RADIOTELEPHONY OR RADIOTELEGRAPHY), N.E.S.
7633	2.418	0.070	1915	TURNTABLES AND RECORD PLAYERS, NOT INCORPORATING A SOUND RECORDING DEVICE
7638	16.753	0.154	2530	SOUND RECORDING AND OTHER SOUND REPRODUCING APPARATUS; VIDEO RECORDING OR REPRODUCING APPARATUS, WHETHER OR NOT INCORPORATING A VIDEO TUNER
7641	0.354	0.043	1928	ELECTRICAL APPARATUS FOR LINE TELEPHONY OR LINE TELEGRAPHY (INCLUDING SUCH APPARATUS FOR CARRIER-CURRENT LINE SYSTEMS)
7642	2.112	0.683	3076	MICROPHONES AND STANDS THEREFOR; LOUDSPEAKERS, HEADPHONES, EARPHONES AND COMBINED MICROPHONE/SPEAKER SETS; AUDIO-FREQUENCY ELECTRIC AMPLIFIERS, ETC.
7643	2.482	0.302	2688	TRANSMISSION APPARATUS FOR RADIOTELEPHONY, TELEGRAPHY, BROADCASTING OR TELEVISION, WHETHER OR NOT INCLUDING RECEPTION, SOUND RECORDING, ETC. APPARATUS
7648	2.834	0.061	2690	TELECOMMUNICATIONS EQUIPMENT, N.E.S.

Table A2 - Expenditure Elasticities and Forecast Performance at the Good Level

SITC Code	Expenditure Elasticity	Forecast Performance	Sample Size	Good Name
7649	0.117	0.052	2104	PARTS AND ACCESSORIES SUITABLE FOR USE SOLELY OR PRINCIPALLY WITH THE APPARATUS OF TELECOMMUNICATIONS AND SOUND RECORDING AND REPRODUCING EQUIPMENT
7711	0.024	0.075	3412	TRANSFORMERS, ELECTRICAL
7712	0.442	0.353	3935	ELECTRIC POWER MACHINERY, N.E.S.; PARTS OF ELECTRIC POWER MACHINERY N.E.S.
7722	1.738	0.408	3011	PRINTED CIRCUITS
7723	0.049	0.267	2983	ELECTRICAL RESISTORS (INCLUDING RHEOSTATS AND POTENTIOMETERS), OTHER THAN HEATING RESISTORS; AND PARTS THEREOF
7724	0.109	0.330	2915	ELECTRICAL APPARATUS FOR SWITCHING OR PROTECTING ELECTRICAL CIRCUITS OR MAKING CONNECTIONS TO OR IN ELECTRICAL CIRCUITS, VOLTAGE EXCEEDING 1,000 VOLTS
7725	0.241	0.212	2561	ELECTRICAL APPARATUS FOR SWITCHING OR PROTECTING ELECTRICAL CIRCUITS OR MAKING CONNECTIONS TO OR IN ELECTRICAL CIRCUITS, NOT EXCEEDING 1,000 VOLTS
7726	0.845	0.391	3571	BOARDS, PANELS (INCLUDING NUMERICAL CONTROL PANELS), CONSOLES ETC. FOR ELECTRIC CONTROL OR DISTRIBUTION OF ELECTRICITY, EXCLUDING LINE ETC. SWITCHING
7728	NaN	NaN	624	PARTS OF ELECTRICAL APPARATUS FOR SWITCHING OR PROTECTING ELECTRICAL CIRCUITS, BOARD, PANELS, CONSOLES, OTHER BASES, FOR CONTROL OF ELECTRICITY ETC.
7731	0.077	0.042	3254	INSULATED WIRE, CABLE AND OTHER INSULATED ELECTRIC CONDUCTORS; OPTICAL FIBER CABLES OF INDIVIDUALLY SHEATHED FIBERS
7732	0.262	0.286	2801	ELECTRICAL INSULATING EQUIPMENT
7741	0.530	0.257	953	ELECTRO-DIAGNOSTIC APPARATUS (OTHER THAN RADIOLOGICAL)
7742	0.262	0.366	1396	APPARATUS BASED ON X-RAYS OR ALPHA, BETA OR GAMMA RADIATIONS, WHETHER OR NOT FOR MEDICAL, SURGICAL, DENTAL OR VETERINARY USES, PARTS, N.E.S., ETC.
7751	2.333	0.506	1434	HOUSEHOLD TYPE LAUNDRY EQUIPMENT, N.E.S., WHETHER OR NOT ELECTRICAL
7752	14.775	0.384	2069	HOUSEHOLD TYPE REFRIGERATORS AND FOOD FREEZERS (ELECTRICAL AND OTHER)
7753	1.575	0.371	1124	DISHWASHING MACHINES OF THE HOUSEHOLD TYPE
7754	2.862	0.332	1310	SHAVERS AND HAIR CLIPPERS, WITH SELF-CONTAINED ELECTRIC MOTOR AND PARTS THEREOF (EXCLUDING BLADES AND CUTTING HEADS)
7755	4.248	0.497	1040	VACUUM CLEANERS
7757	3.377	0.205	2138	ELECTROMECHANICAL DOMESTIC APPLIANCES, WITH SELF-CONTAINED ELECTRIC MOTOR; PARTS THEREOF
7758	0.355	-0.036	1843	ELECTROTHERMIC APPLIANCES, N.E.S.
7761	11.256	0.094	1073	TELEVISION PICTURE TUBES, CATHODE-RAY (INCLUDING VIDEO MONITOR CATHODE-RAY TUBES)
7762	0.300	0.206	1824	ELECTRONIC VALVES AND TUBES (INCLUDING TELEVISION CAMERA TUBES), N.E.S.
7763	1.274	0.160	3447	DIODES, TRANSISTORS AND SIMILAR SEMICONDUCTOR DEVICES; PHOTOSENSITIVE SEMICONDUCTOR DEVICES; LIGHT EMITTING DIODES
7764	1.146	0.044	3574	ELECTRONIC INTEGRATED CIRCUITS AND MICROASSEMBLIES
7768	0.025	0.237	2230	PIEZOELECTRIC CRYSTALS, MOUNTED, AND PARTS, N.E.S. OF THERMIONIC, COLD CATHODE OR PHOTOCATHODE VALVES AND TUBES, DIODES, TRANSISTORS, ETC.
7781	0.026	-0.060	2996	BATTERIES AND ELECTRIC ACCUMULATORS, AND PARTS THEREOF
7782	0.379	0.509	2885	ELECTRIC FILAMENT OR DISCHARGE LAMPS (INCLUDING SEALED BEAM LAMP UNITS AND ULTRAVIOLET OR INFRARED LAMPS); ARC LAMPS; AND PARTS THEREOF
7783	0.797	-0.115	1442	ELECTRICAL EQUIPMENT, N.E.S., FOR INTERNAL COMBUSTION ENGINES AND VEHICLES; AND PARTS THEREOF
7784	8.956	0.530	2272	ELECTROMECHANICAL TOOLS FOR WORKING IN THE HAND, WITH SELF-CONTAINED ELECTRIC MOTOR; AND PARTS THEREOF
7786	0.445	0.083	2954	ELECTRIC CAPACITORS, FIXED, VARIABLE OR ADJUSTABLE (PRE-SET); AND PARTS THEREOF
7787	0.287	0.209	2327	ELECTRICAL MACHINES AND APPARATUS, HAVING INDIVIDUAL FUNCTIONS, N.E.S.; AND PARTS THEREOF
7788	0.624	0.168	811	ELECTRICAL MACHINERY AND EQUIPMENT, N.E.S.
7811	5.688	0.450	1136	VEHICLES SPECIALLY DESIGNED FOR TRAVEL ON SNOW; GOLF CARTS AND SIMILAR VEHICLES
7812	12.721	0.638	2030	MOTOR VEHICLES FOR THE TRANSPORT OF PERSONS (OTHER THAN PUBLIC TRANSPORT), N.E.S.
7821	59.352	0.539	1490	MOTOR VEHICLES FOR THE TRANSPORT OF GOODS
7822	5.609	0.201	1204	SPECIAL PURPOSE MOTOR VEHICLES, OTHER THAN THOSE DESIGNED PRIMARILY FOR THE TRANSPORT OF PERSONS OR GOODS (E.G., WRECKERS, CRANES AND DERRICKS)
7831	4.217	0.320	1020	MOTOR VEHICLES FOR THE TRANSPORT OF TEN OR MORE PERSONS, INCLUDING THE DRIVER
7832	1.389	0.181	728	ROAD TRACTORS FOR SEMI-TRAILERS
7841	0.947	0.337	1016	CHASSIS FITTED WITH ENGINES, FOR TRACTORS, MOTOR CARS AND OTHER MOTOR VEHICLES, TRUCKS, PUBLIC-TRANSPORT VEHICLES AND ROAD MOTOR VEHICLES N.E.S.
7842	12.093	0.593	1770	BODIES (INCLUDING CABS) FOR TRACTORS, MOTOR CARS AND OTHER MOTOR VEHICLES, TRUCKS, PUBLIC-TRANSPORT VEHICLES AND ROAD MOTOR VEHICLES N.E.S.
7843	1.691	0.316	4605	PARTS AND ACCESSORIES N.E.S. FOR TRACTORS, MOTOR CARS AND OTHER MOTOR VEHICLES, TRUCKS, PUBLIC-TRANSPORT VEHICLES AND ROAD MOTOR VEHICLES N.E.S.
7851	12.266	-0.090	1876	MOTORCYCLES (INCLUDING MOPEDS) AND CYCLES FITTED WITH AN AUXILIARY MOTOR, WITH OR WITHOUT SIDE-CARS; SIDE-CARS
7852	38.764	0.237	1559	BICYCLES AND OTHER CYCLES (INCLUDING DELIVERY TRICYCLES), NOT MOTORIZED
7853	0.594	0.168	2867	INVALID CARRIAGES, WHETHER OR NOT MOTORIZED OR OTHERWISE MECHANICALLY PROP ELLED; PARTS OF CYCLES, MOTORIZED OR NOT MOTORIZED, AND INVALID CARRIAGES
7861	4.703	0.240	755	TRAILERS AND SEMI-TRAILERS OF THE CARAVAN TYPE, FOR HOUSING OR CARRIAGE
7862	9.477	0.585	1164	TRAILERS AND SEMI-TRAILERS FOR THE TRANSPORT OF GOODS
7863	NaN	NaN	624	CONTAINERS (INCLUDING CONTAINERS FOR THE TRANSPORT OF FLUIDS) SPECIALLY DESIGNED AND EQUIPPED FOR CARRIAGE BY ONE OR MORE MODES OF TRANSPORT
7868	1.192	0.666	2781	VEHICLES, NOT MECHANICALLY PROPELLED N.E.S.; PARTS OF TRAILERS, SEMI-TRAILERS AND OF NOT MECHANICALLY PROPELLED VEHICLES
7911	NaN	NaN	624	RAIL LOCOMOTIVES POWERED FROM AN EXTERNAL SOURCE OF ELECTRICITY OR BY ELECTRIC ACCUMULATORS (BATTERIES)
7912	1.000	-0.049	700	RAILWAY LOCOMOTIVES, N.E.S.; LOCOMOTIVE TENDERS
7916	1.000	0.006	649	RAILWAY OR TRAMWAY COACHES, VANS AND TRUCKS, SELF-PROPELLED (OTHER THAN RAILWAY OR TRAMWAY MAINTENANCE OR SERVICE VEHICLES)
7917	1.000	-0.075	662	RAILWAY OR TRAMWAY PASSENGER COACHES, NOT SELF-PROPELLED; LUGGAGE VANS, POST OFFICE COACHES AND OTHER SPECIAL RAILWAY COACHES ETC., NOT SELF-PROPELLED
7918	1.000	-0.260	691	RAILWAY OR TRAMWAY FREIGHT AND MAINTENANCE CARS
7919	0.113	0.097	1278	RAILWAY OR TRAMWAY TRACK FIXTURES AND FITTINGS; MECHANICAL SIGNALING, SAFETY AND TRAFFIC CONTROL EQUIPMENT FOR RAILWAYS, ETC., PARTS OF RAIL VEHICLES
7921	1.292	0.358	855	HELICOPTERS
7922	1.599	0.349	1199	AIRPLANES AND OTHER AIRCRAFT, MECHANICALLY PROPELLED (OTHER THAN HELICOPTERS), OF AN UNLADEN WEIGHT NOT EXCEEDING 2,000 KG
7923	1.682	0.154	1001	AIRPLANES AND OTHER AIRCRAFT, MECHANICALLY PROPELLED (EXCEPT HELICOPTERS), OF AN UNLADEN WEIGHT EXCEEDING 2,000 KG BUT NOT EXCEEDING 15,000 KG
7924	1.111	0.021	810	AIRPLANES AND OTHER AIRCRAFT, MECHANICALLY PROPELLED (OTHER THAN HELICOPTERS), OF AN UNLADEN WEIGHT EXCEEDING 15,000 KG
7925	NaN	NaN	624	SPACECRAFT (INCLUDING SATELLITES) AND SPACECRAFT LAUNCH VEHICLES
7928	1.387	0.007	1560	AIRCRAFT, N.E.S. (INCLUDING DIRIGIBLES, BALLOONS, GLIDERS, ETC.) AND ASSOCIATED EQUIPMENT
7929	5.730	0.456	3440	PARTS, N.E.S. (NOT INCLUDING TIRES, ENGINES AND ELECTRICAL PARTS) OF AIRCRAFT AND ASSOCIATED EQUIPMENT, OF SPACECRAFT AND SPACECRAFT LAUNCH VEHICLES
7931	0.778	0.405	2415	YACHTS AND OTHER VESSELS FOR PLEASURE OR SPORTS; ROWING BOATS AND CANOES
7932	1.512	0.077	771	SHIPS, BOATS AND OTHER VESSELS (OTHER THAN PLEASURE CRAFT, TUGS, PUSHER CRAFT, SPECIAL PURPOSE VESSELS AND VESSELS FOR BREAKING UP)
7933	NaN	NaN	624	VESSELS AND OTHER FLOATING STRUCTURES FOR BREAKING UP
7935	1.568	0.100	761	LIGHT VESSELS, FIRE-FLOATS, DREDGERS, FLOATING CRANES AND OTHER VESSELS WHICH MAIN FUNCTION IS NOT NAVIGATION; FLOATING DOCKS; DRILLING ETC. PLATFORMS
7937	NaN	NaN	624	TUGS AND PUSHER CRAFT
7939	0.510	0.111	1308	OTHER FLOATING STRUCTURES (E.G., RAFTS, TANKS, COFFER-DAMS, LANDING-STAGES, BOUYS AND BEACONS)
8110	2.687	0.204	1997	PREFABRICATED BUILDINGS
8121	0.388	0.130	1106	BOILERS (EXCEPT POWER GENERATING) AND RADIATORS FOR NONELECTRIC CENTRAL HEAT AND PARTS THEREOF, OF IRON OR STEEL; AIR HEATERS (NOT ELECTRIC), ETC.
8122	3.557	0.455	2694	CERAMIC SINKS, WASH BASINS, WASH BASIN PEDESTALS, BATHS, BIDETS, WATER CLOSET PANS, FLUSHING CISTERNS, URINALS AND SIMILAR SANITARY FIXTURES
8131	9.003	0.704	4212	LAMPS AND LIGHTING FITTINGS (INCLUDING SEARCHLIGHTS AND SPOTLIGHTS), N.E.S.
8132	1.892	0.230	1924	ILLUMINATED SIGNS, ILLUMINATED NAMEPLATES AND THE LIKE
8138	NaN	NaN	624	PARTS OF PORTABLE ELECTRIC LAMPS DESIGNED TO FUNCTION ON THEIR OWN ENERGY SOURCES (BATTERIES ETC.), OTHER THAN FOR MOTOR VEHICLES, ETC.
8139	1.109	-0.054	846	LAMPS N.E.S., OF LAMPS AND LIGHTING FITTINGS, N.E.S., AND PARTS OF ILLUMINATED SIGNS, ILLUMINATED NAMEPLATES AND THE LIKE
8211	11.062	0.558	4699	SEATS (OTHER THAN DENTIST, BARBER, ETC. CHAIRS WITH ROTATING ETC. MOVEMENTS), WHETHER OR NOT CONVERTIBLE INTO BEDS, AND PARTS THEREOF
8212	11.630	0.298	3473	MATTRESS SUPPORTS; ARTICLES OF BEDDING OR SIMILAR FURNISHINGS (MATTRESSES, QUILTS, PILLOWS, ETC.) WITH SPRINGS, STUFFED OR INTERNALLY FITTED, ETC.
8213	0.288	0.364	1331	FURNITURE, N.E.S., OF METAL
8215	1.715	0.481	3871	FURNITURE, N.E.S., OF WOOD
8217	NaN	NaN	624	FURNITURE, N.E.S., OF MATERIALS, N.E.S. (OTHER THAN OF METAL OR WOOD)
8218	NaN	NaN	624	PARTS OF FURNITURE, N.E.S., OF METAL, WOOD AND OTHER MATERIALS
8311	37.660	0.772	4373	HANDBAGS, WHETHER OR NOT WITH A SHOULDER STRAP (INCLUDING THOSE WITHOUT HANDLES)
8312	28.437	0.459	3798	TRUNKS, SUITCASES, VANITY CASES, EXECUTIVE CASES, BRIEFCASES, SCHOOL SATCHELS AND SIMILAR CONTAINERS
8313	NaN	NaN	624	TRAVEL SETS FOR PERSONAL TOILET, SEWING OR SHOE OR CLOTHES CLEANING
8319	34.042	0.658	4880	BINOCLULAR CASES, CAMERA CASES, MUSICAL INSTRUMENT CASES, SPECTACLE CASES, ETC., PURSES, WALLETS, ETC., OF LEATHER, PLASTICS, TEXT MATLS ETC, NES
8411	19.330	0.469	4784	OVERCOATS, CARCOATS, CAPES, ANORAKS (INCLUDING SKI-JACKETS), ETC. (EXCEPT SUIT-TYPE JACKETS AND BLAZERS) OF WOVEN FABRICS, MEN'S OR BOYS'
8412	0.482	0.245	3106	SUITS AND ENSEMBLES OF WOVEN TEXTILE MATERIALS, MEN'S OR BOYS'
8413	6.390	0.468	4014	JACKETS (SUIT-TYPE) AND BLAZERS OF WOVEN TEXTILE MATERIALS, MEN'S OR BOYS'
8414	13.036	0.682	5779	TROUSERS, BIB AND BRACE OVERALLS, BREECHES AND SHORTS OF WOVEN TEXTILE MATERIALS, MEN'S OR BOYS'
8415	14.611	0.791	5236	SHIRTS OF WOVEN TEXTILE MATERIALS, MEN'S OR BOYS'
8416	8.801	0.176	3500	SINGLET (UNDERSHIRTS), UNDERPANTS, BRIEFS, NIGHTSHIRTS, PAJAMAS, BATHROBES, AND SIMILAR ARTICLES OF WOVEN TEXTILE MATERIALS, MEN'S OR BOYS'
8421	12.545	0.458	4910	OVERCOATS, CARCOATS, CAPES, ANORAKS (INCLUDING SKI-JACKETS), ETC. (EXCEPT SUIT-TYPE JACKETS), OF WOVEN TEXTILE FABRICS, WOMEN'S OR GIRLS'
8422	3.469	0.057	2552	SUITS AND ENSEMBLES OF WOVEN TEXTILE FABRICS, WOMEN'S OR GIRLS'
8423	7.869	0.484	4555	JACKETS AND BLAZERS, WOMEN'S AND GIRLS, NOT KNITTED OR CROCHETED
8424	25.089	0.298	5578	DRESSES OF WOVEN TEXTILE FABRICS, WOMEN'S OR GIRLS'
8425	15.268	0.397	5313	SKIRTS AND DIVIDED SKIRTS OF WOVEN TEXTILE FABRICS, WOMEN'S OR GIRLS'
8426	18.664	0.395	5982	TROUSERS, BIB AND BRACE OVERALLS, BREECHES AND SHORTS, OF WOVEN TEXTILE FABRICS, WOMEN'S OR GIRLS'
8427	21.295	0.487	5541	BLOUSES, SHIRTS AND SHIRT-BLOUSES OF WOVEN TEXTILE FABRICS, WOMEN'S OR GIRLS'
8428	14.083	0.475	4127	SINGLET (UNDERSHIRTS), SLIPS, PETTICOATS, PANTIES, NIGHTDRESSES, PAJAMAS, NEGLIGEEES, ETC. OF WOVEN TEXTILE FABRICS, WOMEN'S OR GIRLS'
8431	5.069	0.101	3779	OVERCOATS, CAR COATS, CAPES, CLOAKS, ANORAKS (INCLUDING SKI-JACKETS), WINDBREAKERS, ETC., KNITTED OR CROCHETED TEXTILE FABRICS, MEN'S OR BOYS'
8432	0.439	0.263	4573	SUITS, ENSEMBLES, JACKETS, BLAZERS, TROUSERS, BIB AND BRACE OVERALLS, BREECHES AND SHORTS, KNITTED OR CROCHETED TEXTILE FABRICS, MEN'S OR BOYS'
8437	6.251	0.589	4819	SHIRTS, OF KNITTED OR CROCHETED TEXTILE FABRICS, MEN'S OR BOYS'
8438	8.901	0.092	3998	UNDERPANTS, BRIEFS, NIGHTSHIRTS, PAJAMAS, BATHROBES, DRESSING GOWNS AND SIMILAR ARTICLES, OF KNITTED OR CROCHETED TEXTILE FABRICS, MEN'S OR BOYS'
8441	6.971	0.243	4452	OVERCOATS, CARCOATS, CAPES, CLOAKS, ANORAKS (INCLUDING SKI-JACKETS), ETC., (EXCEPT SUIT-TYPE JACKETS), KNITTED OR CROCHETED FABRIC, WOMEN'S OR GIRLS'
8442	0.199	0.377	5682	SUITS, ENSEMBLES, JACKETS, BLAZERS, DRESSES, SKIRTS, DIVIDED SKIRTS, TROUSERS, BIB & BRACE OVERALLS, BREECHES & SHORTS, WOMEN'S OR GIRLS' TEXT FAB KNT

Table A2 - Expenditure Elasticities and Forecast Performance at the Good Level

SITC Code	Expenditure Elasticity	Forecast Performance	Sample Size	Good Name
8447	4.956	0.532	5065	BLOUSES, SHIRTS AND SHIRT-BLOUSES, OF KNITTED OR CROCHETED TEXTILE FABRICS, WOMEN'S OR GIRLS'
8448	9.180	0.321	4747	SLIPS, PETTICOATS, BRIEFS, PANTIES, NIGHTDRESSES, PAJAMAS, NEGLIGEEES, BATHROBES, DRESSING GOWNS ETC., KNITTED OR CROCHETED FABRICS, WOMEN'S OR GIRLS'
8451	19.283	-0.015	4911	BABIES' GARMENTS AND CLOTHING ACCESSORIES OF TEXTILE FABRICS
8452	34.494	0.487	3607	GARMENTS OF FELT OR OTHER NONWOVEN FABRICS (COATED, ETC. OR NOT), OR OF OTHER TEXTILE FABRICS COATED OR IMPREGNATED WITH PLASTICS, RUBBER, ETC.
8453	9.095	0.415	6136	JERSEYS, PULLOVERS, CARDIGANS, WAISTCOATS AND SIMILAR ARTICLES, KNITTED OR CROCHETED
8454	7.150	0.415	5998	T-SHIRTS, SINGLETS (UNDERSHIRTS), TANK TOPS AND SIMILAR GARMENTS, OF KNITTED OR CROCHETED TEXTILE FABRICS
8455	13.905	0.472	3973	BRASSIERES, GIRDLES, CORSETS, BRACES, SUSPENDERS, GARTERS AND SIMILAR ARTICLES, WHETHER OR NOT KNITTED OR CROCHETED
8456	9.399	0.224	3567	SWIMWEAR OF TEXTILE FABRICS
8458	13.220	0.542	5454	GARMENTS, N.E.S., NOT KNITTED OR CROCHETED
8459	4.615	0.177	4937	GARMENTS, N.E.S., KNITTED OR CROCHETED
8461	19.971	0.462	4855	CLOTHING ACCESSORIES, NOT FOR BABIES, NOT KNITTED OR CROCHETED
8462	16.509	0.503	4030	PANTY HOSE, TIGHTS, STOCKINGS, SOCKS AND OTHER HOSIERY (INCLUDING SUPPORT STOCKINGS AND FOOTWEAR WITHOUT APPLIED SOLES), KNITTED OR CROCHETED
8469	20.362	0.592	4270	CLOTHING ACCESSORIES, N.E.S., KNITTED OR CROCHETED; PARTS OF GARMENTS OR OF CLOTHING ACCESSORIES, KNITTED OR CROCHETED
8481	3.585	0.079	2984	ARTICLES OF APPAREL AND CLOTHING ACCESSORIES, OF LEATHER OR COMPOSITION LEATHER (NOT INCLUDING GLOVES, MITTENS AND MITTS DESIGNED FOR USE IN SPORTS)
8482	6.524	0.252	3322	ARTICLES OF APPAREL AND CLOTHING ACCESSORIES (INCLUDING GLOVES), FOR ALL PURPOSES, OF PLASTICS OR OF VULCANIZED RUBBER (OTHER THAN HARD RUBBER)
8483	4.574	0.256	2013	ARTICLES OF APPAREL, CLOTHING ACCESSORIES (EXCEPT HEADGEAR) AND OTHER ARTICLES OF FURSKINS; ARTIFICIAL FUR AND ARTICLES THEREOF
8484	0.953	-0.123	4844	HEADGEAR AND FITTINGS THEREFOR, N.E.S.
8511	22.570	0.394	1864	FOOTWEAR, INCORPORATING A PROTECTIVE METAL TOE-CAP, NOT INCLUDING SPORTS FOOTWEAR
8512	29.632	0.409	2639	SPORTS FOOTWEAR
8513	108.831	0.499	3088	FOOTWEAR, N.E.S., WITH OUTER SOLES AND UPPERS OF RUBBER OR PLASTICS
8514	48.691	0.545	4600	FOOTWEAR, N.E.S., WITH UPPERS OF LEATHER OR COMPOSITION LEATHER
8515	41.913	0.611	3461	FOOTWEAR, N.E.S., WITH UPPERS OF TEXTILE MATERIALS
8517	22.365	0.200	1939	FOOTWEAR, N.E.S.
8519	1.537	0.191	1453	PARTS OF FOOTWEAR (INCLUD UPPERS, WHETH R NT ATTACHD TO SOLES OTH TH OUTER SOLES); REMOVB L INSOLES, HEEL CUSHIONS & SIM ART; GAITERS, ETC PTS THEREOF
8711	1.392	0.300	2061	BINOCULARS, MONOCULARS, OTHER OPTICAL TELESCOPES, AND MOUNTINGS THEREFOR; OTHER ASTRONOMICAL INSTRUMENTS AND MOUNTINGS THEREFOR
8713	NaN	NaN	624	MICROSCOPES (OTHER THAN OPTICAL MICROSCOPES) AND DIFFRACTION APPARATUS; PARTS AND ACCESSORIES THEREOF, N.E.S.
8714	1.993	0.128	1923	COMPOUND OPTICAL MICROSCOPES (INCLUDING THOSE FOR PHOTOMICROGRAPHY, CINEPHOTOMICROGRAPHY OR MICROPROJECTION
8719	0.206	0.360	2571	LIQUID CRYSTAL DEVICES, N.E.S.; LASERS (OTHER THAN LASER DIODES); OTHER OPTICAL APPLIANCES AND INSTRUMENTS, N.E.S.
8721	0.056	0.329	1180	DENTAL INSTRUMENTS AND APPLIANCES, N.E.S.
8722	0.005	-0.110	1922	INSTRUMENTS AND APPLIANCES USED IN MEDICAL, SURGICAL OR VETERINARY SCIENCES (EXCLUDING ELECTRODIAGNOSTIC AND RADIOLOGICAL INSTRUMENTS AND APPARATUS)
8723	0.135	0.133	2029	MECHANO-THERAPY APPLIANCES; MASSAGE APPARATUS; PSYCHOLOGICAL APTITUDE-TESTING APPARATUS; OZONE, OXYGEN, AEROSOL THERAPY AND BREATHING APPARATUS, ETC.
8724	NaN	NaN	624	MEDICAL, DENTAL, SURGICAL OR VETERINARY FURNITURE (OPERATING AND EXAMINING TABLES, MECHANICAL HOSPITAL BEDS AND DENTISTS OR SIMILAR CHAIRS) AND PARTS
8731	1.998	0.030	1947	GAS, LIQUID OR ELECTRICITY SUPPLY OR PRODUCTION METERS, INCLUDING CALIBRATING METERS THEREFOR
8732	1.940	0.456	2549	REVOLUTION AND PRODUCTION COUNTERS, TAXIMETERS, Pedometers, ETC.; SPEEDOMETERS AND TACHOMETERS (EXCEPT OPTICAL ETC. INSTRUMENTS); STROBOSCOPES; PARTS
8741	0.256	0.295	2695	COMPASSES; OTHER NAVIGATIONAL INSTRUMENTS; SURVEYING, HYDROGRAPHIC, OCEANOGRAPHIC, METEOROLOGICAL ETC. INSTRUMENTS AND APPLIANCES; RANGEFINDERS
8742	0.293	0.100	1263	DRAWING, MARKING-OUT OR MATHEMATICAL CALCULATING INSTRUMENTS; MEASURING AND/OR CHECKING INSTRUMENTS, N.E.S.; PROFILE PROJECTORS; PARTS AND ACCESSORIES
8743	0.615	0.452	3374	INSTRUMENTS AND APPARATUS FOR MEASURING OR CHECKING THE FLOW, LEVEL, PRESSURE OR OTHER VARIABLES OF LIQUIDS OR GASES, N.E.S.; PARTS AND ACCESSORIES
8744	0.605	-0.012	1288	INSTRUMENTS FOR PHYSICAL OR CHEMICAL ANALYSIS, FOR MEASURING OR CHECKING VISCOSITY, POROSITY, ETC. OR QUANTITIES OF HEAT, SOUND OR LIGHT; MICROTOMES
8745	0.072	0.243	2911	MEASURING, CONTROLLING AND SCIENTIFIC INSTRUMENTS, N.E.S.
8746	0.215	0.009	2545	AUTOMATIC REGULATING OR CONTROLLING INSTRUMENTS AND APPARATUS
8747	0.498	0.024	2442	OSCILLOSCOPES, SPECTRUM ANALYZERS, ETC. (EXCEPT METERS), FOR MEASURING, ETC. ELECTRICITY; INSTRUMENTS, ETC. MEASURING OR DETECTING IONIZING RADIATIONS
8749	NaN	NaN	624	PARTS AND ACCESSORIES FOR MACHINES, APPLIANCES, INSTRUMENTS AND APPARATUS, N.E.S., MEASURING, CHECKING, ANALYSING OR CONTROLLING, N.E.S.
8811	0.299	0.120	1933	PHOTOGRAPHIC (EXCEPT CINEMATOGRAPHIC) CAMERAS; PHOTOGRAPHIC FLASH APPARATUS AND BULBS (EXCEPT DISCHARGE LAMPS OF HEADING 778.2); PARTS AND ACCESSORIES
8812	0.996	0.235	1536	CINEMATOGRAPHIC CAMERAS AND PROJECTORS, WHETHER OR NOT INCORPORATING SOUND RECORDING OR REPRODUCING APPARATUS; PARTS AND ACCESSORIES THEREOF
8813	0.284	0.258	1569	PHOTOGRAPHIC AND CINEMATOGRAPHIC APPARATUS AND EQUIPMENT, N.E.S.
8821	2.769	0.344	1688	CHEMICALS PREPARED FOR PHOTOGRAPHIC USE (EXCEPT VARNISH, GLUE, ETC.); UNMIXED PRODUCTS FOR PHOTO USE IN MEASURED PORTIONS OR READY TO USE RETAIL PACKS
8822	0.293	0.117	1489	PHOTOGRAPHIC PLATES AND FILM, FLAT, SENSITISED, UNEXPOSED, EXCEPT OF PAPER, PAPERBOARD OR TEXTILES; INSTANT PRINT FILM, FLAT, SENSITISED, UNEXPOSED
8823	0.362	0.113	1718	PHOTOGRAPHIC FILM IN ROLLS, SENSITISED, UNEXPOSED, EXCEPT OF PAPER, PAPERBOARD OR TEXTILES; INSTANT PRINT FILM IN ROLLS, SENSITISED, UNEXPOSED
8824	2.580	0.117	1330	PHOTOGRAPHIC PAPER, PAPERBOARD AND TEXTILES, SENSITISED, UNEXPOSED
8825	1.896	0.019	863	PHOTOGRAPHIC PLATES, FILM, PAPER, PAPERBOARD AND TEXTILES, EXPOSED BUT NOT DEVELOPED
8826	1.000	0.160	741	PHOTOGRAPHIC PLATES AND FILM, EXPOSED AND DEVELOPED, OTHER THAN CINEMATOGRAPHIC FILM
8831	20.824	-0.127	1314	CINEMATOGRAPH FILM, EXPOSED AND DEVELOPED, WHETHER OR NOT INCORPORATING SOUND TRACK OR CONSISTING ONLY OF SOUND TRACK, OF A WIDTH OF 35 MM OR MORE
8839	0.661	0.234	927	CINEMATOGRAPH FILM, EXPOSED AND DEVELOPED, WHETHER OR NOT INCORPORATING SOUND TRACK OR CONSISTING ONLY OF SOUND TRACK OF A WIDTH LESS THAN 35 MM
8841	0.020	-0.172	1925	OPTICAL FIBERS, OPTICAL FIBER BUNDLES AND CABLES N.E.S.; POLARISING SHEETS AND PLATES; UNMOUNTED LENSES, PRISMS, MIRRORS AND OTHER OPTICAL ELEMENTS
8842	15.400	0.462	2413	SPECTACLES AND SPECTACLE FRAMES
8843	0.580	0.267	1609	LENSES, PRISMS, MIRRORS AND OTHER (OPTICALLY WORKED) OPTICAL ELEMENTS, MOUNTED, AS PARTS OF FITTINGS FOR INSTRUMENTS OR APPARATUS
8853	10.703	0.277	1659	WRIST WATCHES, POCKET WATCHES AND OTHER WATCHES (INCLUDING STOP WATCHES) WITH CASE OF PRECIOUS METAL OR METAL CLAD WITH PRECIOUS METAL
8854	24.222	0.409	2239	WRIST WATCHES, POCKET WATCHES AND OTHER WATCHES (INCLUDING STOP WATCHES), WITH CASES NEITHER OF PRECIOUS METAL NOR CLAD WITH PRECIOUS METAL
8855	1.753	0.380	1009	WATCH MOVEMENTS, COMPLETE AND ASSEMBLED
8857	3.547	0.277	2364	CLOCKS
8859	0.104	0.274	2107	TIME MEASURING EQUIPMENT AND ACCESSORIES, N.E.S.; PARTS AND ACCESSORIES FOR CLOCKS AND WATCHES
8911	0.076	-0.085	1993	ARMORED FIGHTING VEHICLES AND ARMS OF WAR
8912	0.045	0.624	1430	BOMBS, GRENADES, TORPEDOES, MINES, MISSILES AND SIMILAR MUNITIONS OF WAR, AND PARTS; CARTRIDGES, PROJECTILES, ETC., INCLUDING SHOT AND CARTRIDGE WADS
8913	1.306	0.242	2165	NONMILITARY ARMS
8919	0.118	0.118	1365	PARTS AND ACCESSORIES OF MILITARY WEAPONS, REVOLVERS AND PISTOLS DESIGNED TO FIRE LIVE AMMUNITION, AND NONMILITARY ARMS
8921	13.389	0.339	4503	BOOKS, PAMPHLETS, MAPS AND GLOBES, PRINTED (NOT INCLUDING ADVERTISING MATERIAL)
8922	0.402	-0.067	2602	NEWSPAPERS, JOURNALS AND PERIODICALS, WHETHER OR NOT ILLUSTRATED OR CONTAINING ADVERTISING MATERIAL
8924	4.869	0.576	2622	POSTCARDS, PERSONAL GREETING MESSAGE OR ANNOUNCEMENT CARDS AND TRANSFERS (DECALCOMANIAS), PRINTED BY ANY PROCESS
8928	1.963	0.391	4379	PRINTED MATTER, N.E.S.
8931	0.061	0.163	2709	ARTICLES FOR THE CONVEYANCE OR PACKING OF GOODS, OF PLASTICS; STOPPERS, LIDS, CAPS AND OTHER CLOSURES, OF PLASTICS
8932	0.554	0.072	1649	BUILDERS' WARE OF PLASTICS
8933	0.320	0.067	1593	FLOOR COVERINGS, WALL OR CEILING COVERINGS AND HOUSEHOLD AND TOILET ARTICLES OF PLASTICS
8939	0.114	0.324	1816	ARTICLES OF PLASTICS, N.E.S.
8941	17.337	0.294	1365	BABY CARRIAGES, AND PARTS THEREOF, N.E.S.
8942	0.809	0.168	2173	CHILDREN'S TOYS
8943	3.135	0.125	905	ARTICLES FOR FUNFAIR, TABLE OR PARLOR GAMES (INCLUDING PINTABLES, BILLIARDS AND SPECIAL TABLES FOR CASINO GAMES AND AUTOMATIC BOWLING ALLEY EQUIPMENT)
8944	3.770	0.269	915	FESTIVE, CARNIVAL OR OTHER ENTERTAINMENT ARTICLES (E.G. CONJURING TRICKS ETC.), INCLUDING CHRISTMAS TREE AND OTHER CHRISTMAS DECORATIVE, ETC. ARTICLES
8946	NaN	NaN	624	MERRY-GO-ROUNDS, SWINGS, SHOOTING GALLERIES, AND OTHER FAIRGROUND AMUSEMENTS, TRAVELING CIRCUSES, TRAVELING MENAGERIES AND TRAVELING THEATRES
8947	0.213	0.207	2070	SPORTING GOODS
8951	2.867	0.456	1961	OFFICE AND STATIONERY SUPPLIES, OF BASE METAL
8952	0.021	0.022	2171	PENS, PENCILS, AND FOUNTAIN PENS
8959	0.408	0.195	1956	OFFICE AND STATIONERY SUPPLIES, N.E.S.
8961	NaN	NaN	624	PAINTINGS, DRAWINGS AND PASTELS, EXECUTED BY HAND AS WORKS OF ART (NOT HAND-PAINTED ETC. MANUFACTURED ITEMS); COLLAGES AND SIMILAR DECORATIVE PLAQUES
8962	NaN	NaN	624	ORIGINAL ENGRAVINGS, PRINTS AND LITHOGRAPHS
8963	NaN	NaN	624	ORIGINAL SCULPTURES AND STATUARY, IN ANY MATERIAL
8964	NaN	NaN	624	POSTAGE OR REVENUE STAMPS, STAMP-POSTMARKS, FIRST-DAY COVERS, ETC. AS COLLECTORS' ITEMS (IF UNUSED NOT CURRENT OR NEW ISSUE IN COUNTRY OF DESTINATION)
8965	0.261	-0.010	1516	COLLECTIONS AND COLLECTORS' PIECES OF ZOOLOGICAL, BOTANICAL, MINERALOGICAL, ANATOMICAL, HISTORICAL, ARCHAEOLOGICAL, NUMISMATIC, ETC. INTEREST
8966	NaN	NaN	624	ANTIQUES OF AN AGE EXCEEDING 100 YEARS
8972	1.000	0.013	669	IMITATION JEWELRY
8973	0.700	-0.190	966	JEWELRY OF GOLD, SILVER OR PLATINUM GROUP METALS (EXCEPT WATCHES AND WATCH CASES) AND GOLDSMITHS' AND SILVERSMITHS' WARES (INCLUDING SET GEMS)
8974	1.738	-0.094	1719	ARTICLES OF PRECIOUS METAL OR CLAD WITH PRECIOUS METAL, N.E.S. (OTHER THAN JEWELRY AND GOLDSMITHS' OR SILVERSMITHS' WARES)
8981	2.472	0.158	2406	PIANOS AND OTHER STRING MUSICAL INSTRUMENTS
8982	2.105	0.534	3142	MUSICAL INSTRUMENTS (OTHER THAN PIANOS AND OTHER STRING MUSICAL INSTRUMENTS)
8984	0.283	-0.118	2515	MAGNETIC TAPES FOR SOUND RECORDING OR SIMILAR RECORDING OF OTHER PHENOMENA
8985	0.249	0.237	1216	PREPARED UNRECORDED MEDIA FOR SOUND RECORDING OR SIMILAR RECORDING OF OTHER PHENOMENA, N.E.S. (OTHER THAN MAGNETIC TAPE AND PHOTOGRAPHIC FILM)
8986	0.057	-0.030	1438	MAGNETIC TAPES, RECORDED
8987	0.945	-0.192	2337	PHONOGRAPH RECORDS AND OTHER RECORDED MEDIA (EXCLUDING MAGNETIC TAPES AND PHOTOGRAPHIC FILM) FOR SOUND OR SIMILARLY RECORDED PHENOMENA
8989	0.023	-0.134	1334	PARTS AND ACCESSORIES OF MUSICAL INSTRUMENTS (MECHANISMS FOR MUSIC BOXES, PERFORATED CARDS, ETC.); METRONOMES, TUNING FORKS AND PITCH PIPES
8991	0.019	-0.173	1383	ARTICLES AND MANUFACTURES OF CARVING OR MOLDING MATERIALS, N.E.S.
8992	NaN	NaN	624	ARTIFICIAL FLOWERS, FOLIAGE OR FRUIT AND PARTS THEREOF; ARTICLES MADE OF ARTIFICIAL FLOWERS, FOLIAGE OR FRUIT
8993	0.021	0.246	2610	CANDLES; MATCHES, PYROPHORIC STICKS, ARTICLES OF COMBUSTIBLE MATERIALS; SMOKERS' REQUISITES
8994	4.880	0.321	1966	UMBRELLAS, PARASOLS, WALKING-STICKS, AND SIMILAR ARTICLES AND PARTS THEREOF
8996	0.537	0.092	1753	ORTHOPEDIC APPLIANCES (INCLUDING CRUTCHES, SURGICAL BELTS, ETC.); FRACTURE APPLIANCES; ARTIFICIAL BODY PARTS; HEARING AIDS, PACEMAKERS, ETC.
8997	0.305	-0.087	3014	BASKETWARE, WICKERWORK AND OTHER ARTICLES OF PLAITING MATERIALS, N.E.S.; BROOMS, BRUSHES, PAINT ROLLERS, SQUEEGES AND MOPS

Table A2 - Expenditure Elasticities and Forecast Performance at the Good Level

SITC Code	Expenditure Elasticity	Forecast Performance	Sample Size	Good Name
8998	0.114	0.149	1510	SMALL-WARES AND TOILET ARTICLES, N.E.S.; SIEVES; TAILORS' DUMMIES, ETC.
8999	0.847	0.278	1852	MANUFACTURED GOODS, N.E.S.
9310	0.020	-0.199	1224	SPECIAL TRANSACTIONS AND COMMODITIES NOT CLASSIFIED ACCORDING TO KIND
9500	1.716	-0.456	1516	COIN, INCLUDING GOLD COIN; PROOF AND PRESENTATION SETS AND CURRENT COIN
9610	NaN	NaN	624	COIN (OTHER THAN GOLD COIN), NOT BEING LEGAL TENDER
9710	1.789	0.081	2875	GOLD, NONMONETARY (EXCLUDING GOLD ORES AND CONCENTRATES)
9840	NaN	NaN	624	ESTIMATE OF IMPORT ITEMS VALUED UNDER \$251 AND OF OTHER LOW VALUED ITEMS NONEXEMPT FROM FORMAL ENTRY

Notes: For each good, the forecast performance has been measured by the correlation between the implications of the model and the actual data. The goods with positive correlation coefficients are given in bold.