



Introduction to Cameron McNall. 6:01 min. Video of 4016 Tivoli: Electroland LLC. Photo & design: Raymond Elman.

The Multi-Talented Cameron McNall

By Elman + Skye + Rivas + Cheek

Cameron McNall is an architect, educated at UCLA and the Harvard Graduate School of Design. His many awards across disciplines include the Rome Prize in Architecture, the National Endowment for the Arts Fellowship in Sculpture, and the Siggraph Theater for digital animation.

McNall founded Electroland LLC in 2001 with partner Damon Seeley. The work of Electroland has received wide notice for its conceptual strength and originality, and has been featured at the Museum of Modern Art in New York and the Cooper Hewitt National Design Museum Triennial in New York.

Based in Los Angeles, McNall's projects take him all over the world, including an interactive-space project at Fort Lauderdale-Hollywood International Airport, which has been in the works since 2005.

McNall is married to curator Margi Reeve, who was interviewed by Inspicio in 2015.

The videos below are organized by topic and run between 60 seconds and 5 minutes. Click on any video. You must be connected to the Internet to view the videos.

EXPOSURE TO BROAD INFLUENCES: 3:14 min.



What is your earliest memory of art of any discipline?

CRITICAL THINKING: 2:26 min.



You're both an accomplished artist and an architect. What did you learn in school that still informs you today?

DEVELOP A VOICE: 3:30 min.



After graduation from the Harvard Graduate School of Design, you received commissions, awards, and grants for both art and architecture.

CRITICAL THINKING: 3:07 min.



Talk about your "Hollywood Shadow Project."

SEIZES OPPORTUNITIES: 5:17 min.



How did you start doing projects that interact with human motion?

CREATIVE FLEXIBILITY: 2:04 min.



Talk about your project at the Fort Lauderdale-Hollywood International Airport.

CREATIVE FLEXIBILITY: 1:58 min.



Describe a challenging situation with a successful outcome.

CREATES A UNIQUE PERSONAL BRAND: 1:25 min.



We are sitting in an unusual house that you designed and built. Please tell us the backstory.

OVERCOMES CHALLENGES TO SUCCEED: 1:45 min.



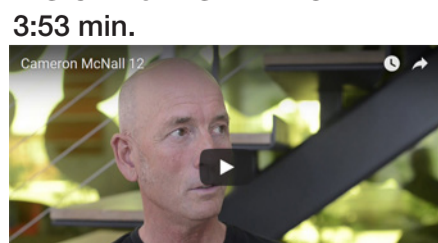
Your house abuts a retail commercial area, and you designed a unique indoor-outdoor solution to the challenges posed by the neighborhood.

CREATES A UNIQUE PERSONAL BRAND: 1:12 min.



The house includes works of art that you made from found objects such as cheap colorful plastic buckets or waste baskets from Dollar Tree. Is this the first time you've made art objects to go with the house when sold?

INSIGHT & INSPIRATION: 3:53 min.



What are your biggest current challenges?