

2001

FY2001 Annual Report of the Water Quality Monitoring Project for the Water Quality Protection Program in the Florida Keys National Marine Sanctuary

Ronald Jones

Southeast Environmental Research Center, Florida International University

Joseph N. Boyer

Southeast Environmental Research Center, Florida International University, boyerj@fiu.edu

Follow this and additional works at: <https://digitalcommons.fiu.edu/sercrp>



Part of the [Environmental Monitoring Commons](#), and the [Water Resource Management Commons](#)

Recommended Citation

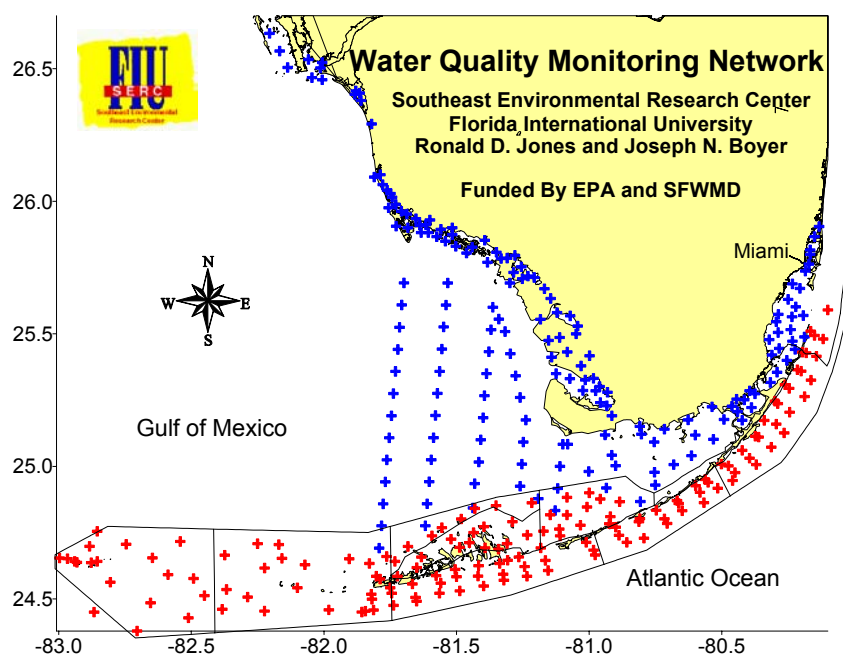
Jones, Ronald and Boyer, Joseph N., "FY2001 Annual Report of the Water Quality Monitoring Project for the Water Quality Protection Program in the Florida Keys National Marine Sanctuary" (2001). *SERC Research Reports*. 56.
<https://digitalcommons.fiu.edu/sercrp/56>

This work is brought to you for free and open access by the Southeast Environmental Research Center at FIU Digital Commons. It has been accepted for inclusion in SERC Research Reports by an authorized administrator of FIU Digital Commons. For more information, please contact dcc@fiu.edu.

FY2001 ANNUAL REPORT OF THE WATER QUALITY MONITORING PROJECT

FOR THE WATER QUALITY PROTECTION PROGRAM

IN THE FLORIDA KEYS NATIONAL MARINE SANCTUARY



Southeast Environmental Research Center
Florida International University
Miami, FL 33199

<http://serc.fiu.edu/wqmnetwork/>

**FY2001 ANNUAL REPORT OF THE WATER
QUALITY MONITORING PROJECT**

FOR THE WATER QUALITY PROTECTION PROGRAM

IN THE FLORIDA KEYS NATIONAL MARINE SANCTUARY

Principal Investigators

Ronald D. Jones

and

Joseph N. Boyer

Southeast Environmental Research Center
Florida International University
Miami, FL 33199
<http://serc.fiu.edu/wqmnetwork/>

US EPA Contract #X994621-94-0
SFWMD/SERC Agreement C-13178

This is Technical Report #T181 of the Southeast Environmental Research Center
at Florida International University.

**FY2001 ANNUAL REPORT OF THE WATER QUALITY MONITORING PROJECT
FOR THE WATER QUALITY PROTECTION PROGRAM
IN THE FLORIDA KEYS NATIONAL MARINE SANCTUARY**

Funded by the Environmental Protection Agency (X994621-94-0)
and South Florida Water Management District (#C-13178)

Ronald D. Jones and Joseph N. Boyer, Southeast Environmental Research Center,
Florida International University, Miami, FL 33199

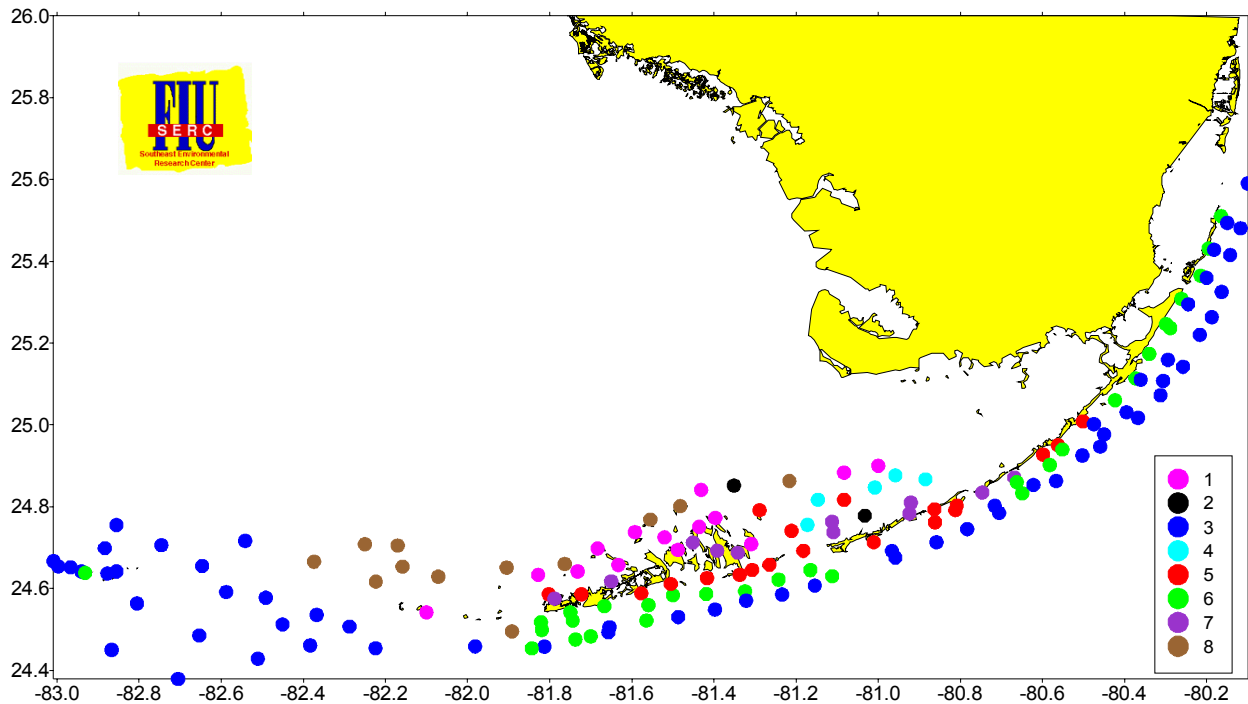
EXECUTIVE SUMMARY

This report serves as a summary of our efforts to date in the execution of the Water Quality Monitoring Project for the FKNMS as part of the Water Quality Protection Program. Since initiation we have added 4 sampling sites and adjusted 6 others to increase cover in the Sanctuary Preservation Areas and Ecological Reserves. We have received 33 requests for data by outside researchers working in the FKNMS; one of which has resulted in a master's thesis. Two scientific manuscripts have been published: one is a book chapter in *The Everglades, Florida Bay, and the Coral Reefs of the Florida Keys: an Ecological Sourcebook*. CRC Press.; the other is in special issue of *Estuarine, Coastal and Shelf Science* on visualization in coastal marine science. Two other manuscripts are being prepared; one in conjunction with the FKNMS seagrass monitoring program. We maintain a website (<http://serc.fiu.edu/wqmnetwork/>) where data from the FKNMS is integrated with the other parts of the SERC water quality network (Florida Bay, Whitewater Bay, Biscayne Bay, Ten Thousand Islands, and SW Florida Shelf) and displayed as downloadable contour maps, time series graphs, and interpretive reports.

The period of record for this report is Mar. 1995 – Sept. 2001 and includes data from 25 quarterly sampling events at 154 stations within the FKNMS including the Dry Tortugas National Park. Field parameters at each station include salinity (practical salinity scale), temperature (°C), dissolved oxygen (DO, mg l⁻¹), turbidity (NTU), relative fluorescence, and light attenuation (K_d, m⁻¹). Water chemistry variables include the dissolved nutrients nitrate (NO₃⁻), nitrite (NO₂⁻), ammonium (NH₄⁺), dissolved inorganic nitrogen (DIN), and soluble reactive phosphate (SRP). Total unfiltered concentrations of nitrogen (TN), organic nitrogen (TON), organic carbon (TOC), phosphorus (TP), and silicate (Si(OH)₄) were also measured. Biological parameters included chlorophyll *a* (CHLA, µg l⁻¹) and alkaline phosphatase activity (APA, µM h⁻¹). All concentrations are reported as µM unless noted otherwise.

On a vertical basis, temperature, DO, TOC, and TON were generally higher in surface waters while salinity, NO_3^- , NO_2^- , NH_4^+ , TP, and turbidity were higher in bottom waters. This slight stratification is indicative of a weak pycnocline which is maintained by freshwater inputs, advection of lower salinity waters from Florida Bay and the SW Shelf, and solar heating at the surface. Elevated nutrient concentrations in bottom waters are due to benthic flux and episodic upwelling from deep offshore waters.

An Objective Classification Analysis was performed in an effort to group stations in the FKNMS according to their specific water quality. This resulted in the formation of into 8 clusters of stations which possessed distinct water quality signatures. We believe this is a more functional zonation of the FKNMS as it is not biased by subjective driven by similarities in water quality. The bulk of the stations fell into 6 large clusters which described a gradient of water quality throughout the FKNMS. Although the differences among them were very subtle, they were statistically significant and allowed us to say that the overall nutrient gradient, from highest to lowest concentrations, was cluster 7, 8>1>5>6>3.



Cluster 7 (●) was highest in inorganic nutrients, especially NO_3^- , as well as TOC and TON. Cluster 8 (●) had the highest CHLA and turbidity while being low in inorganic and organic nutrients and as such was driven by water quality of the Shelf. Cluster 1 (●) was high in TP, CHLA, and turbidity. The main distinction between Cluster 1 and 8 was higher in CHLA and

lower in TOC. Cluster 5 (●) was elevated in DIN relative to the Hawk Channel and reef tract sites. Cluster 6 (●) was slightly lower in nutrients than Cluster 5. Cluster 3 (●) had the lowest nutrients, CHLA, turbidity, and TOC of any in the FKNMS. A clear gradient of elevated DIN, TP, TOC, and turbidity from alongshore to offshore was observed in the Keys with the Upper Keys being lower than the Middle and Lower Keys. No gradient was observed for CHLA.

The large scale of this monitoring program has allowed us to assemble a much more holistic view of broad physical/chemical/biological interactions occurring over the South Florida hydroscape. Much information has been gained by inference from this type of data collection program: major nutrient sources have been confirmed, relative differences in geographical determinants of water quality have been demonstrated, and large scale transport via circulation pathways have been elucidated. In addition we have shown the importance of looking "outside the box" for questions asked within. Rather than thinking of water quality monitoring as being a static, non-scientific pursuit it should be viewed as a tool for answering management questions and developing new scientific hypotheses.

Table of Contents

I. PROJECT BACKGROUND

II. METHODS

III. RESULTS

IV. DISCUSSION

V. REFERENCES

VI. APPENDIX – CONTOUR MAPS

I. Project Background

The Florida Keys are a archipelago of sub-tropical islands of Pleistocene origin which extend in a NE to SW direction from Miami to Key West and out to the Dry Tortugas (Fig. 1). In 1990, President Bush signed into law the Florida Keys National Sanctuary and Protection Act (HR5909) which designated a boundary encompassing >2,800 square nautical miles of islands, coastal waters, and coral reef tract as the Florida Keys National Marine Sanctuary (FKNMS). The Comprehensive Management Plan (NOAA 1995) required the FKNMS to have a Water Quality Protection Plan (WQPP) thereafter developed by EPA and the State of Florida (EPA 1995). The contract for the water quality monitoring component of the WQPP was subsequently awarded to the Southeast Environmental Research Program at Florida International University and the field sampling program began in March 1995.

The waters of the FKNMS are characterized by complex water circulation patterns over both spatial and temporal scales with much of this variability due to seasonal influence in regional circulation regimes. The FKNMS is directly influenced by the Florida Current, the Gulf of Mexico Loop Current, inshore currents of the SW Florida Shelf (Shelf), discharge from the Everglades through the Shark River Slough, and by tidal exchange with both Florida Bay and Biscayne Bay (Lee et al. 1994, Lee et al. 2002). Advection from these external sources has significant effects on the physical, chemical, and biological composition of waters within the FKNMS, as may internal nutrient loading and freshwater runoff from the Keys themselves. Water quality of the FKNMS may be directly affected both by external nutrient transport and internal nutrient loading sources. Therefore, the geographical extent of the FKNMS is one of political/regulatory definition and should not be thought of as an enclosed ecosystem.

A spatial framework for FKNMS water quality management was proposed on the basis of geographical variation of regional circulation patterns (Klein and Orlando, 1994). The final implementation plan (EPA, 1995) partitioned the FKNMS into 9 segments which was collapsed to 7 for routine sampling (Fig. 1). Station locations were developed using a stratified random design along onshore/offshore transects in Segment 5, 7, and 9 or within EMAP grid cells in Segment 1, 2, 4, and 6.

Segment 1 (Tortugas) includes the Dry Tortugas National Park (DTNP) and surrounding waters and is most influenced by the Loop Current and Dry Tortugas Gyre. Originally, there were no sampling sites located within the DTNP as it was outside the jurisdiction of NOAA.

Upon request from the National Park Service, we initiated sampling at 5 sites within the DNTP boundary. Segment 2 (Marquesas) includes the Marquesas Keys and a shallow sandy area between the Marquesas and Tortugas called the Quicksands. Segment 4 (Backcountry) contains the shallow, hard-bottomed waters on the gulfside of the Lower Keys. Segments 2 and 4 are both influenced by water moving south along the SW Shelf. Segment 6 can be considered as part of western Florida Bay. This area is referred to as the Sluiceway as it is strongly influenced by transport from Florida Bay, SW Shelf, and Shark River Slough (Smith, 1994). Segments 5 (Lower Keys), 7 (Middle Keys), and 9 (Upper Keys) include the inshore, Hawk Channel, and reef tract of the Atlantic side of the Florida Keys. The Lower Keys are most influenced by cyclonic gyres spun off of the Florida Current, the Middle Keys by exchange with Florida Bay, while the Upper Keys are influenced by the Florida Current frontal eddies and to a certain extent by exchange with Biscayne Bay. All three oceanside segments are also influenced by wind and tidally driven lateral Hawk Channel transport (Pitts, 1997).

We have found that water quality monitoring programs composed of many sampling stations situated across a diverse hydroscape are often difficult to interpret due to the “can’t see the forest for the trees” problem (Boyer et al. 2000). At each site, the many measured variables are independently analyzed, individually graphed, and separately summarized in tables. This approach makes it difficult to see the larger, regional picture or to determine any associations among sites. In order to gain a better understanding of the spatial patterns of water quality of the FKNMS, we attempted to reduce the complicated data matrix into fewer elements which would provide robust estimates of condition and connection. To this end we developed an objective classification analysis procedure which grouped stations according to water quality similarity.

Ongoing quarterly sampling of >200 stations in the FKNMS and Shelf, as well as monthly sampling of 100 stations in Florida Bay, Biscayne Bay, and the mangrove estuaries of the SW coast, has provided us with a unique opportunity to explore the spatial component of water quality variability. By stratifying the sampling stations according to depth, regional geography, distance from shore, proximity to tidal passes, and influence of Shelf waters we report some preliminary conclusions as to the relative importance of external vs. internal factors on the ambient water quality within the FKNMS.

II. Methods

Field Sampling

The period of record of this study was from March 1995 to July 2001 which included 25 quarterly sampling events. For each event, field measurements and grab samples were collected from 154 fixed stations within the FKNMS boundary (Fig. 2). Depth profiles of temperature ($^{\circ}\text{C}$), salinity (practical salinity scale), dissolved oxygen (DO, mg l^{-1}), photosynthetically active radiation (PAR, $\mu\text{E m}^{-2} \text{s}^{-1}$), *in situ* chlorophyll *a* specific fluorescence (FSU), optical backscatterance turbidity (OBS), depth as measured by pressure transducer (m), and density (σ_t , in kg m^{-3}) were measured by CTD casts (Seabird SBE 19). The CTD was equipped with internal RAM and operated in stand alone mode at a sampling rate of 0.5 sec. The vertical light attenuation coefficient (K_d , m^{-1}) was calculated at 0.5 m intervals from PAR and depth using the standard exponential equation (Kirk 1994) and averaged over the station depth. This was necessary due to periodic occurrence of optically distinct layers within the water column. During these events, K_d was reported for the upper layer. To determine the extent of stratification we calculated the difference between surface and bottom density as $\Delta\sigma_t$, where positive values denoted greater density of bottom water relative to the surface. A $\Delta\sigma_t > 1$ is weakly stratified, while anything > 2 is considered strongly stratified.

In the Backcountry area (Seg. 4, Fig. 1) where it was too shallow to use a CTD, surface salinity and temperature were measured using a combination salinity-conductivity-temperature probe (Orion model 140). DO was measured using an oxygen electrode (Orion model 840) corrected for salinity and temperature. PAR was measured using a Li-Cor irradiance meter equipped with two 4π spherical sensors (LI-193SB) separated by 0.5 m in depth and oriented at 90° to each other. The light meter measured instantaneous difference between sensors which was then used to calculate K_d from in-air surface irradiance.

Water was collected from approximately 0.25 m below the surface and at approximately 1 m from the bottom with a teflon-lined Niskin bottle (General Oceanics) except in the Backcountry and Sluiceway where it was collected directly into sample bottles. Duplicate, unfiltered water samples were dispensed into 3x sample rinsed 120 ml HDPE bottles for analysis of total constituents. Duplicate water samples for dissolved nutrients were dispensed into 3x sample rinsed 150 ml syringes which were then filtered by hand through 25 mm glass fiber filters

(Whatman GF/F) into 3x sample rinsed 60 ml HDPE bottles. The resulting wet filters, used for chlorophyll *a* (CHLA) analysis, were placed in 1.8 ml plastic centrifuge tubes to which 1.5 ml of 90 % acetone/water was added (Strickland and Parsons 1972).

Unfiltered samples were kept at ambient temperature in the dark during transport to the laboratory. During shipboard collection in the Tortugas/Marquesas and overnight stays in the Keys, unfiltered samples were analyzed for APA and turbidity prior to refrigeration. Filtered samples and CHLA filters were kept on ice in the dark during transport. During shipboard collection in the Tortugas/Marquesas and overnight stays in the lower Keys, filtrates and filters were frozen until further analysis.

Laboratory Analysis

Unfiltered water samples were analyzed for total organic carbon (TOC), total nitrogen (TN), total phosphorus (TP), silicate (Si(OH)_4), alkaline phosphatase activity (APA), and turbidity. TOC was measured by direct injection onto hot platinum catalyst in a Shimadzu TOC-5000 after first acidifying to $\text{pH} < 2$ and purging with CO_2 -free air. TN was measured using an ANTEK 7000N Nitrogen Analyzer using O_2 as carrier gas to promote complete recovery of the nitrogen in the water samples (Frankovich and Jones 1998). TP was determined using a dry ashing, acid hydrolysis technique (Solórzano and Sharp 1980). Si(OH)_4 was measured using the molybdosilicate method (Strickland and Parsons 1972). The APA assay measures the activity of alkaline phosphatase, an enzyme used by bacteria and algae to mineralize orthophosphate from organic compounds. The assay is performed by adding a known concentration of methylfluorescein phosphate to an unfiltered water sample. Alkaline phosphatase in the water sample cleaves the orthophosphate, leaving methylfluorescein, a highly fluorescent compound. Fluorescence at initial and after 2 hr incubation were measured using a Gilford Fluoro IV Spectrofluorometer (excitation = 430 nm, emission = 507 nm) and subtracted to give APA in $\mu\text{M h}^{-1}$ (Jones 1996). Turbidity was measured using an HF Scientific model DRT-15C turbidimeter and reported in NTU.

Filtrates were analyzed for nitrate+nitrite (NO_x^-), nitrite (NO_2^-), ammonium (NH_4^+), and soluble reactive phosphorus (SRP) by flow injection analysis (Alpkem model RFA 300). Filters for CHLA content ($\mu\text{g l}^{-1}$) were allowed to extract for a minimum of 2 days at -20°C before analysis. Extracts were analyzed using a Gilford Fluoro IV Spectrofluorometer (excitation = 435

nm, emission = 667 nm). All analyses were completed within 1 month after collection in accordance to SERC laboratory QA/QC guidelines.

Some parameters were not measured directly, but were calculated by difference. Nitrate (NO_3^-) was calculated as $\text{NO}_X^- - \text{NO}_2^-$, dissolved inorganic nitrogen (DIN) as $\text{NO}_X^- + \text{NH}_4^+$, and total organic nitrogen (TON) defined as $\text{TN} - \text{DIN}$. All concentrations are reported as μM unless noted. All elemental ratios discussed were calculated on a molar basis. DO saturation in the water column (DO_{sat} as %) was calculated using the equations of Garcia and Gordon (1992).

Objective Classification Analysis

Stations were stratified according to water quality characteristics (i.e. physical, chemical, and biological variables) using a statistical approach. Multivariate statistical techniques have been shown to be useful in reducing a large data sets into a smaller set of independent, synthetic variables that capture much of the original variance. The method we chose was a type of objective classification analysis (OCA) which uses principal component analysis (PCA) followed by k-means clustering algorithm to classify sites as to their overall water quality. This approach has been very useful in understanding the factors influencing nutrient biogeochemistry in Florida Bay (Boyer et al., 1997), Biscayne Bay, and the Ten Thousand Islands (Boyer and Jones, 1998). We have found that water quality at a specific site is the result of the interaction of a variety of driving forces including oceanic and freshwater inputs/outputs, sinks, and internal cycling.

Briefly, data were first standardized as Z-scores prior to analysis to reduce artifacts of differences in magnitude among variables. PCA was used to extract statistically significant composite variables (principal components) from the original data (Overland and Preisendorfer 1982). The PCA solution was rotated (using VARIMAX) in order to facilitate the interpretation of the principal components and the factor scores were saved for each data record. Both the mean and SD of the factor scores for each station over the entire period of record were then used as independent variables in a cluster analysis (k-means algorithm) in order to aggregate stations into groups of similar water quality. The purpose of this analysis was to collapse the 154 stations into a few groups which could then be analyzed in more detail.

Box and Whisker Plots

Typically, water quality data are skewed to the left (low concentrations and below detects) resulting in non-normal distributions. Therefore it is more appropriate to use the median as the measure of central tendency because the mean is inflated by high outliers (Christian et al. 1991). Data distributions of water quality variables are reported as box-and-whiskers plots. The box-and-whisker plot is a powerful statistic as it shows the median, range, the data distribution as well as serving as a graphical, nonparametric ANOVA. The center horizontal line of the box is the median of the data, the top and bottom of the box are the 25th and 75th percentiles (quartiles), and the ends of the whiskers are the 5th and 95th percentiles. The notch in the box is the 95% confidence interval of the median. When notches between boxes do not overlap, the medians are considered significantly different. Outliers (<5th and >95th percentiles) were excluded from the graphs to reduce visual compression. Differences in variables were also tested between groups using the Wilcoxon Ranked Sign test (comparable to a *t*-test) and among groups by the Kruskal-Wallis test (ANOVA) with significance set at $P < 0.05$.

Contour Maps

In an effort to elucidate the contribution of external factors to the water quality of the FKNMS and to visualize gradients in water quality over the region, we combined data from other portions of our water quality monitoring network: Florida Bay, Biscayne Bay, Whitewater Bay, Ten Thousand Islands, SW Shelf, and Marco Island – Ft. Meyers (see example in Fig. 10 and <http://serc.fiu.edu/wqmnetwork/FKNMS-CD/ContourMaps.htm> for all other maps). Data from these 153 additional stations were collected during the same month as the FKNMS surveys and analyzed by the SERC laboratory using identical methods. Contour maps were produced using Surfer (Golden Software). The most important aspect of generating contour maps is the geostatistical algorithm used for interpolating the data values. Care should be taken in the selection of the algorithm because automated interpolation to a regular rectangular grid can produce artifacts, especially around the edges and when the area of interest is irregularly shaped. The kriging algorithm was used because it is designed to minimize the error variance while at the same time maintaining point pattern continuity (Isaaks & Srivastava, 1989). Kriging is a global approach which uses standard geostatistics to determine the "distance" of influence around each point and the "clustering" of similar samples sites (autocorrelation). Therefore, unlike the

inverse distance procedure, kriging will not produce valleys in the contour between neighboring points of similar value.

Time Series Analysis

Individual site data for the complete period of record were plotted as time series graphs (see <http://serc.fiu.edu/wqmnetwork/FKNMS-CD/index.htm>) to illustrate any temporal trends that might have occurred. Temporal trends were quantified by simple regression with significance set at $P < 0.05$. We originally planned to use a seasonal Kendall- τ analysis to test for monotonic trend (Hirsch et al. 1991) but found that it was not applicable to this short, quarterly sampled data set.

III. Results

General Water Quality of the FKNMS

Summary statistics for all water quality variables from all 25 sampling events are shown as median, minimum, maximum, and number of samples (Table 1). Overall, the region was warm and euhaline with a median temperature of 27.3°C and salinity of 36.2; oxygen saturation of the water column (DO_{sat}) was relatively high at 90.3%. On this coarse scale, the FKNMS exhibited very good water quality with median NO_3^- , NH_4^+ , and TP concentrations of 0.09, 0.32, and 0.20 μM , respectively. NH_4^+ was the dominant DIN species in almost all of the samples (~70 %). However, DIN comprised a small fraction (4 %) of the TN pool with TON making up the bulk (median 10.0 μM). SRP concentrations were very low (median 0.013 μM) and comprised only 6 percent of the TP pool. CHLA concentrations were also very low overall, 0.25 $\mu\text{g l}^{-1}$, but ranged from 0.01 to 15.2 $\mu\text{g l}^{-1}$. TOC was 204.1; higher than open ocean levels but consistent with coastal inputs. Median turbidity was low (0.6 NTU) as reflected in a low K_d (0.229 m^{-1}). This resulted in a median photic depth (to 1 % incident PAR) of ~22 m. Molar ratios of N to P suggested a general P limitation of the water column; median TN:TP = 57 and median DIN:SRP = 32.

Objective Classification Analysis

PCA identified five composite variables (hereafter called PC1, PC2, etc.) that passed the rule N for significance at $P < 0.05$ (Overland and Preisendorfer 1982) indicating five separate modes of variation in the data (Table 2). These five principal components accounted for 63.2 % of the total variance of the original variables. PC1 had high factor loadings for NO_3^- , NO_2^- , NH_4^+ , and SRP and was named the “Inorganic Nutrient” component. PC2 included TP, APA, CHLA, and turbidity and was designated as the “Phytoplankton” component. The covariance of TP with CHLA implies that, in many areas, phytoplankton biomass may be limited by phosphorus availability. This is contrary to much of the literature on the subject which usually ascribes nitrogen as being the limiting factor for phytoplankton production in coastal oceans. TON and TOC were included in PC3 as the “Terrestrial Organic” component. Temperature and DO were inversely related in PC4. Finally, PC5 included salinity and TP, implying a source of TP from marine waters. Note that TP had two modes of variability as a function of its distribution.

Spatial distributions of the mean factor score for each station indicated how the average water quality varied over the study area. The “Inorganic Nutrient” component had two peaks: in the Backcountry and bayside of the Middle Keys (Fig. 3). The “Phytoplankton” component described a N to S gradient in the Backcountry and Sluiceway which extended west across the northern Marquesas (Fig. 4). The “Terrestrial Organic” component was highest in eastern Sluiceway extending into the Backcountry and was also distributed as a gradient away from land on the Atlantic side of the Keys (Fig. 5). Temperature and DO showed a distribution heavily loaded in the oceanside (Fig.6). Finally the salinity/TP component showed lower loadings in the alongshore Upper Keys and bayside Sluiceway extending through most Atlantic sites of the Middle and Lower Keys (Fig. 7).

The k-means clustering algorithm used the mean and SD of the four factor scores of each station to classify all 150 sampling sites into 8 groups having robust correspondence in water quality (Fig. 8). The bulk of the stations fell into 6 large clusters (1, 3, 5, 6, 7, and 8) which described a gradient of water quality throughout the FKNMS. Although the differences among them were very subtle, they were statistically significant and allowed us to say that the overall nutrient gradient, from highest to lowest concentrations, was cluster 7, 8>1>5>6>3 (Fig. 9).

Cluster 7 (●) was composed primarily stations located within Backcountry around Big Pine Key, bayside Middle Keys, and the most inshore sites off Lower Matecumbe Key (Fig. 8). This group was highest in inorganic nutrients, especially NO_3^- , as well as TOC and TON (Fig. 9). We expect that benthic flux of nutrients might be very important in these shallow areas. The same factors which make this region the most probable area to see elevated nutrient concentrations also make it vulnerable to anthropogenic impacts. Any nutrient inputs from developed lands would be retained in the system rather than being mixed and transported out. Cluster 8 (●) included the northernmost sites in the Sluiceway, Backcountry and Marquesas and as such was driven by water quality of the Shelf. It had the highest CHLA and turbidity while being low in inorganic and organic nutrients. Cluster 1 (●) was composed of 2 sites in the northern Sluiceway and 12 sites in northern Backcountry extending out to the Marquesas. This group was high in TP, CHLA, and turbidity. The main distinction between Cluster 1 and 8 was higher in CHLA and lower in TOC.

Cluster 5 (●) included the most of the inshore sites of the Keys, excluding the northernmost and southernmost ones. They were elevated in DIN relative to the Hawk Channel and reef tract

sites. Cluster 6 (●) was made up of sites in Hawk Channel of the Lower Keys and alongshore sites in the Upper Keys. This group was slightly lower in nutrients than Cluster 5. Cluster 3 (●) was made up of reef tract and Tortugas stations. These sites had lowest nutrients, CHLA, turbidity, and TOC of any in the FKNMS. A clear gradient of elevated DIN, TP, TOC, and turbidity from alongshore to offshore was observed in the Keys with the Upper Keys being lower than the Middle and Lower Keys. No gradient was observed for CHLA.

Sites making up Cluster 4 (●) were located in the Sluiceway and were characterized as having the greatest range in salinity. Cluster 2 (●) was composed of only 2 sites in the Sluiceway and will not be discussed.

Contour Maps

All contour maps are archived on the website <http://serc.fiu.edu/wqmnetwork/SFWMD-CD/ContourMaps.htm> and are updated quarterly. An example of such (Fig. 10) shows the distribution of salinity across the region. Both freshwater sources and marine influences are visible using this approach.

Time Series Analysis

Last year we observed significant increasing trends in TP, NO_3^- , and decreasing TON (Jones and Boyer 2001). We ascribed these trends as being driven primarily by large scale circulation patterns. This year, no significant large scale trends were observed. Much of this was due to a trend reversal in some nutrient concentrations. Figures 11 – 16 show temporal trends in the median and range of the data (box-and-whisker plots) for each group by quarterly sampling event. Clearly, there have been large changes in the water quality over time however, trend analysis is limited to the window of observation.

IV. Discussion

Water quality is a subjective measure of ecosystem well being. Aside from the physical-chemical composition of the water there is also a human perceptual element which varies according to our intents for use (Kruczyinski and McManus 2002). Distinguishing internal from external sources of nutrients in the FKNMS is a difficult task. The finer discrimination of internal sources into natural and anthropogenic inputs is even more difficult. Most of the important anthropogenic inputs are regulated and most likely controlled by management activities, however, recent studies have shown that nutrients from shallow sewage injection wells may be leaking into nearshore surface waters (Corbett et al. 1999). Advective transport of nutrients through the FKNMS was not measured by the existing fixed sampling plan. However, nutrient distribution patterns may be compared to the regional circulation regimes in an effort to visualize the contribution of external sources and advective transport to internal water quality of the FKNMS.

Circulation in coastal South Florida is dominated by regional currents such as the Loop Current, Florida Current, and Tortugas Gyre and by local transport via Hawk Channel and along-shore Shelf movements (Klein and Orlando 1994). Regional currents may influence water quality over large areas by the advection of external surface water masses into and through the FKNMS (Lee et al. 1994, Lee et al. 2002) and by the intrusion of deep offshore ocean waters onto the reef tract as internal bores (Leichter et al. 1996). Local currents become more important in the mixing and transport of freshwater and nutrients from terrestrial sources (Smith 1994; Pitts 1997).

Spatial patterns of salinity in coastal South Florida show these major sources of freshwater to have more than just local impacts (Fig. 3 and <http://serc.fiu.edu/wqmnetwork/FKNMS-CD/ContourMaps.htm>). In Biscayne Bay, freshwater is released through the canal system operated by the South Florida Water Management District; the impact is clearly seen to affect northern Key Largo by causing episodic depressions in salinity at alongshore sites. Freshwater entering NE Florida Bay via overland flow from Taylor Slough and C-111 basin mix in a SW direction. The extent of influence of freshwater from Florida Bay on alongshore salinity in the Keys is less than that of Biscayne Bay but it is more episodic. Transport of low salinity water from Florida Bay does not affect the Middle Keys sites enough to depress the median salinity in

this region but is manifested as increased variability. On the west coast, the large influence of the Shark River Slough, which drains the bulk of the Everglades and exits through the Whitewater Bay - Ten Thousand Islands mangrove complex, is clearly seen to impact the Shelf waters (<http://serc.fiu.edu/wqmnetwork/FKNMS-CD/ContourMaps.htm>). The mixing of Shelf waters with the Gulf of Mexico produces a salinity gradient in a SW direction which extends out to Key West. This freshwater source does not affect the Backcountry because of its shallow nature but instead follows a trajectory of entering western Florida Bay and exiting out through the channels in the Middle Keys (Smith 1994). This net transport of lower salinity water from mainland to reef in open channels through the Keys is observed as an increase in the range and variability of salinity rather than as a large depression in salinity.

In addition to surface currents there is evidence that internal tidal bores regularly impact the Key Largo reef tract (Leichter et al. 1996; Leichter and Miller 1999). Internal bores are episodes of higher density, deep water intrusion onto the shallower shelf or reef tract. Depending on their energy, internal tidal bores can promote stratification of the water column or cause complete vertical mixing as a breaking internal wave of subthermocline water. According to $\Delta\sigma_t$, the SW area of the Tortugas segment tends to experience the greatest frequency of stratification events. The decreased temperature and increased salinity in bottom waters from intrusion of deeper denser oceanic waters to this region may also account for increases in NO_3^- , TP, and SRP in these bottom waters as well. For example, in April 1998 a mass of colder, nutrient laden water from the Gulf of Mexico moved up onto the Tortugas reefs and fueled a large benthic macroalgae bloom (J. Porter, pers. comm.). This event was observed throughout most of the eastern Gulf as far north as Pensacola. At the two most SW stations, temperatures dropped $\sim 4^\circ\text{C}$, NO_3^- increased 3 orders of magnitude, SRP and Si(OH)_4 increased by a factor of 100, while TP, turbidity, and in vivo CHLA specific fluorescence (measured via CTD) all doubled. As there was only a small increase in NH_4^+ during this event we believe the general case of elevated NH_4^+ and turbidity found in bottom waters throughout the FKNMS is most probably due to benthic flux and resuspension and not to subthermocline advection.

Surface Si(OH)_4 concentrations exhibited a pattern similar to salinity (Appendix). The source of Si(OH)_4 in this geologic area of carbonate rock and sediments is from siliceous periphyton (diatoms) growing in the Shark River Slough, Taylor Slough, and C-111 basin watersheds. Unlike the Mississippi River plume with CHLA concentrations of $76 \mu\text{g l}^{-1}$ (Nelson

and Dortch 1996), phytoplankton biomass on the Shelf ($1-2 \mu\text{g l}^{-1}$ CHLA) was not sufficient to account for the depletion of Si(OH)_4 in this area. Therefore, Si(OH)_4 concentrations on the Shelf were depleted by mixing alone allowing Si(OH)_4 to be used as a semi-conservative tracer of freshwater in this system (Ryther et al. 1967; Moore et al. 1986). Unlike Florida Bay and the west coast, there was very little Si(OH)_4 loading to southern Biscayne Bay, mostly because the source of freshwater to this system is from canals which drain agricultural and urban areas of Dade County.

In the Lower and Middle Keys, it is clear that the source of Si(OH)_4 to the nearshore Atlantic waters is through the Sluiceway and Backcountry. Si(OH)_4 concentrations near the coast were elevated relative to the reef tract with much higher concentrations occurring in the Lower and Middle Keys than the Upper Keys (Appendix). There is an interesting peak in Si(OH)_4 concentration in an area of the Sluiceway which is densely covered with the seagrass, *Syringodium* (Fourqurean et al. 2002). We are unsure as to the source but postulate that it may be due to benthic flux.

Visualization of spatial patterns of NO_3^- concentration over South Florida waters provide an extended view of source gradients over the region (Appendix). Biscayne Bay, Florida Bay, and the Shark River area of the west coast exhibited high NO_3^- concentrations relative to the FKNMS and Shelf. Elevated NO_3^- in Biscayne Bay is the result of loading from both the canal drainage system and from inshore groundwater (Alleman et al. 1995, Meeder et al. 1997). The source of NO_3^- to Florida Bay is the Taylor Slough and C-111 basin (Boyer and Jones, 1999; Rudnick et al., 1999) while the Shark River Slough impacts the west coast mangrove rivers and out onto the Shelf (Rudnick et al., 1999). We speculate that in both cases, elevated NO_3^- concentrations are the result of N_2 fixation/nitrification within the mangroves (Pelegri and Twilley 1998). The oceanside transects off the uninhabited Upper Keys (off Biscayne Bay in Seg. 9) exhibited the lowest alongshore NO_3^- compared to the Middle and Lower Keys. A similar pattern was observed in a previous transect survey from these areas (Szmant and Forrester 1996). They also showed an inshore elevation of NO_3^- relative to Hawk Channel and the reef tract which is also demonstrated in our analysis (Fig. 3). Interestingly, NO_3^- concentrations in all stations in the Tortugas transect were similar to those of reef tract sites in the mainland Keys; there was no inshore elevation of NO_3^- on the transect off uninhabited Loggerhead Key. We suggest this source of NO_3^- in the Keys is due to human shoreline development.

Figure 3 also shows that a distinct intensification of NO_3^- occurs in the Backcountry region. Part of this increase may be due to local sources of NO_3^- , i.e. septic systems and stormwater runoff around Big Pine Key (Lapointe and Clark 1992). However, there is another area, the Snipe Keys, that also exhibits high NO_3^- which is uninhabited by man which rules out the premise of septic systems being the only source of NO_3^- in this area. It is important to note that the Backcountry area is very shallow (~ 0.5 m) and hydraulically isolated from the Shelf and Atlantic which results in its having a relatively long water residence time. Elevated NO_3^- concentrations may be partially due to simple evaporative concentration as is seen in locally elevated salinity values. Another possibility is a contribution of benthic N_2 fixation/nitrification in this very shallow area.

NH_4^+ concentrations were distributed in a similar manner as NO_3^- with highest levels occurring in Florida Bay, the Ten Thousand Islands, and the Backcountry. NH_4^+ concentrations were very low in Biscayne Bay because it is not a major component of loading from the canal drainage system. NH_4^+ also showed similarities with NO_3^- in its spatial distribution, being lowest in the Upper Keys and highest inshore relative to offshore. There was no alongshore elevation of NH_4^+ concentrations in the Tortugas where levels were similar to those of reef tract sites in the mainland Keys. That the least developed portion of the Upper Keys in Biscayne National Park and uninhabited Loggerhead Key (Tortugas) exhibited lowest NO_3^- and NH_4^+ concentrations is evidence of a local anthropogenic source for both of these variables along the ocean side of the Upper, Middle, and Lower Keys. This pattern of decline offshore implies an onshore N source which is diluted with distance from land by low nutrient Atlantic Ocean waters.

Elevated DIN concentrations in the Backcountry, on the other hand, are not so easily explained. We postulate that the high concentrations found there are due to a combination of anthropogenic loading, physical entrapment, and benthic N_2 fixation. The relative contribution of these potential sources is unknown. Lapointe and Matzie (1996) have shown that stormwater and septic systems are responsible for increased DIN loading in and around Big Pine Key. The effect of increased water residence time in DIN concentration is probably small. Salinities in this area were only 1-2 higher than local seawater which resulted in a concentration effect of only 5-6%. Benthic N_2 fixation may potentially be very important in the N budget of the Backcountry. Measured rates of N_2 fixation in a *Thalassia* bed in Biscayne Bay, having very

similar physical and chemical conditions, were $540 \mu\text{mol N m}^{-2} \text{d}^{-1}$ (Capone and Taylor 1980). Without the plant community N demand, one day of N_2 fixation has the potential to generate a water column concentration of $>1 \mu\text{M NH}_4^+$ (0.5 m deep). Much of this NH_4^+ is probably nitrified and may help account for the elevated NO_3^- concentrations observed in this area as well. Clearly, N_2 fixation may be a significant component of the N budget in the Backcountry and that it may be exported as DIN to the FKNMS in general.

Spatial patterns in TP in South Florida coastal waters were strongly driven by the west coast sources (Appendix). A small gradient in TP extended from the inshore waters of Whitewater Bay - Ten Thousand Islands mangrove complex out onto the Shelf and Tortugas. A weak gradient also extended from north central Florida Bay to the Middle Keys. Brand (1997) has postulated that groundwater from a subterranean Miocene quartz sand channel, "the river of sand", containing high levels of phosphorus is the source of TP in this region. However, little evidence of this source exists to date and field data from Florida Bay does not indicate a subterranean source (Corbett et al. 1999; Boyer and Jones unpublished data). Finally, there was no evidence of a significant terrestrial source of TP to Biscayne Bay.

In the Keys, there was evidence of elevated TP in alongshore stations of the Middle and Lower Keys but the differences were very small. The Upper Keys actually showed higher TP concentrations on the reef tract than inshore implying an offshore source. Interestingly, the Tortugas area had higher TP concentrations than the Upper Keys as a result of Shelf water advection. In South Florida coastal waters, very little of TP is found in the inorganic form (SRP - PO_4^-); most is organic P. The distribution of SRP on the west coast and Shelf was similar to that of TP with the general gradient from the west coast to Tortugas remaining (Appendix). However, the SRP distribution was distinctly different from that of TP in Florida Bay, Whitewater Bay, and Biscayne Bay. In central Florida Bay the N-S gradient previously observed for TP was highly diminished for SRP indicating that almost all the TP in central Florida Bay was in the form of organic P. It is unlikely that the source of TP to this region is from overland flow or groundwater as this is also the region that expresses highest salinity. Alternately, we hypothesize that the presence of the Flamingo channel, running parallel to the southern coastline of Cape Sable, acts as a tidal conduit for episodic advection of inshore Shelf water to enter north central Florida Bay. Subsequent trapping and evaporation then may act to concentrate TP in this region. The second difference in P distributions was that there was a

significant SRP gradient present in NE Florida Bay that was not observed for TP. The sources of SRP to this area are the Taylor Slough and C-111 basin (W. Walker per. communication; Boyer and Jones, 1999; Rudnick et al., 1999).

Whitewater Bay displayed an east-west gradient in SRP concentrations which increased with salinity leading us to conclude that the freshwater inputs from the Everglades were not a source of SRP to this area. Finally, there was evidence of a significant onshore-offshore SRP gradient in southern Biscayne Bay; most probably as a direct result of canal loading and groundwater seepage to this region (A. Lietz personal communication; Meeder et al. 1997).

Concentrations of TOC (Appendix) and TON (Appendix) are remarkably similar in pattern of distribution across the South Florida coastal hydroscape. The decreasing gradient from west coast to Tortugas was very similar to that of TP. A steep gradient with distance from land was also observed in Biscayne Bay. Both these gradients were most probably due to terrestrial loading. On the west coast, the source of TOC and TON was from the mangrove forests. Our data from this area shows that concentrations of TOC and TON increased from Everglades headwaters through the mangrove zone and then decrease with distance offshore. In Biscayne Bay, much of the TOC and TON is from agricultural land use. The high concentrations of TOC and TON found in Florida Bay were due to a combination of terrestrial loading (Boyer and Jones, 1999), in situ production by seagrass and phytoplankton, and evaporative concentration (Fourqurean et al. 1993).

Advection of Shelf and Florida Bay waters through the Sluiceway and passes accounted for this region and the inshore area of the Middle Keys as having highest TOC and TON of the FKNMS. Strong offshore gradients in TOC and TON existed for all mainland Keys segments but not for the Tortugas transect. Part of this difference may be explained by the absence of mangroves in the single Tortugas transect. The higher concentrations of TOC and TON in the inshore waters of the Keys implies a terrestrial source rather than simply benthic production and sediment resuspension. Main Keys reef tract concentrations of TOC and TON were similar to those found in the Tortugas.

Much emphasis has been placed on assessing the impact of episodic phytoplankton blooms in Florida Bay on the offshore reef tract environment. Spatial patterns of CHLA concentrations showed that NW Florida Bay, Whitewater Bay, and the Ten Thousand Islands exhibited high levels of CHLA relative to Biscayne Bay, Shelf, and FKNMS (Appendix). The highest CHLA

concentrations were found in west coast mangrove estuaries (up to $45 \mu\text{g l}^{-1}$ in Alligator Bay, TTI). CHLA is also routinely higher ($\sim 2 \mu\text{g l}^{-1}$) in NW Florida Bay along the channel connecting the Shelf to Flamingo. It is interesting that CHLA concentrations are higher in the Marquesas ($0.36 \mu\text{g l}^{-1}$) than in other areas of the FKNMS. When examined in context with the whole South Florida ecosystem, it is obvious that the Marquesas zone should be considered a continuum of the Shelf rather than a separate management entity. This shallow sandy area (often called the Quicksands) acts as a physical mixing zone between the Shelf and the Atlantic Ocean and is a highly productive area for other biota as well as it encompasses the historically rich Tortugas shrimping grounds. A CHLA concentration of $1 \mu\text{g l}^{-1}$ in the water column of a reef tract might be considered an indication of eutrophication. Conversely, a similar CHLA level in the Quicksands indicates a productive ecosystem which feeds a valuable shrimp fishery.

The oceanside transects in the Upper Keys exhibited the lowest overall CHLA concentrations of any zone in the FKNMS. Ocean transects showed a slight increase in CHLA on the reef tract in this area. Transects off the Middle and Lower Keys showed that a drop in CHLA occurred at reef tract sites; there was no linear decline with distance from shore. Interestingly, CHLA concentrations in the Tortugas transect showed a similar pattern as the mainland Keys. Inshore and Hawk Channel CHLA concentrations among Middle Keys, Lower Keys and Tortugas sites were not significantly different. As inshore CHLA concentrations in the Tortugas were similar to those in the Middle and Lower Keys, we see no evidence of persistent phytoplankton bloom transport from Florida Bay. There was however some evidence of increased CHLA in those stations situated along the major passes in the Keys relative to those abutting land. The differences between these two groupings were very small (0.25 vs. $0.20 \mu\text{g l}^{-1}$) suggesting that although significant bloom transport events do occur, they are not routinely observed with a quarterly sampling program.

Along with TP concentration, turbidity is probably the second most important determinant of local ecosystem health. The fine grained, low density carbonate sediments in this area are easily resuspended, rapidly transported, and have high light scattering potential. High water column turbidity and transport directly affects filter feeding organisms by clogging their feeding apparatus and by increasing local sedimentation rate. Sustained high turbidity of the water column indirectly affects benthic community structure by decreasing light penetration, promoting seagrasses extinction. Large scale observations of turbidity clearly show patterns of

onshore-offshore gradients which extend out onto the Shelf to the Marquesas (Appendix; Stumpf et al. 1999). In the last seven years, turbidities in Florida Bay have increased dramatically in the NE and central regions (Boyer et al. 1998) potentially as a consequence of destabilization of the sediment from seagrass die-off (Robblee et al. 1991).

Strong turbidity gradients were observed for all Keys transects but reef tract levels were remarkably similar regardless of inshore levels. High alongshore turbidity is most probably due to the shallow water column being easily resuspended by wind and wave action. Inshore stations in the Middle Keys had higher turbidity than other segments. Transects aligned with major passes had slightly greater turbidity than those against land but the difference was not statistically significant. Light extinction (K_d) was highest alongshore and improved with distance from land. This trend was expected as light extinction is directly related to water turbidity.

Using the TN:TP ratio is a relatively simple method of estimating potential nutrient limitation status of phytoplankton (Redfield 1967). Most of the South Florida hydroscape was shown to have TN:TP values $\gg 16:1$, indicating the potential for phytoplankton to be limited by P at these sites (Appendix). The bulk of Florida Bay and both southern and northern Biscayne Bay were severely P limited, mostly as a result of high DIN concentrations. All of the FKNMS is routinely P limited using this metric. Interestingly, the Marquesas/Quicksands area was the least P limited of all zones and exhibited a significant regression between SRP and CHLA. Only in the northern Ten Thousand Islands and Shelf did N become the limiting nutrient. The south-north shift from P to N limitation observed in the west coast estuaries has been ascribed to changes in landuse and bedrock geochemistry of the watersheds (Boyer and Jones 1998). The west coast south of 25.4 N latitude is influenced by overland freshwater flow from the Everglades and Shark River Slough having very low P concentrations relative to N. Above 25.7 N latitude the bedrock geology of the watershed changes from carbonate to silicate based and landuse changes from relatively undeveloped wetland (Big Cypress Basin) to a highly urban/agricultural mix (Naples, FL).

Temporal trends in water quality showed most variables to be relatively consistent from year to year. The exceptions were increased TP and NO_3^- and declining TON. We emphasize that these trends were regional phenomena and were not due solely to local inputs from the Florida Keys. These trends must also be put in perspective with other ecological changes occurring in the

region. No trends in TP were observed in the western Florida Bay/Inner Shelf zone or in those FKNMS sites most influenced by transport of Florida Bay waters. During the same time period, TP concentrations in Florida Bay proper were declining (Boyer et al. 1999). The absence of TP trends in the Middle Keys may have been due to the influence of Florida Bay waters through the passes.

At this time we can only speculate as to the cause of these trends but much of the trend is driven by regional circulation patterns arising from the Loop Current which entrains water from other coastal estuaries such as the Caloosahatchee River and Tampa Bay as well as the Mississippi. That the increases have occurred in deep and shallow water stations at both the surface and bottom over a consistent period of time ruled out episodic upwelling as a major factor. We know of no data which addressed changes in internal cycling processes (benthic flux or water column cycling) over this period. However, there is some preliminary evidence that the distribution of seagrass correlates with some of the trend patterns (Fourqurean, pers. comm.). Areas where TP trends were absent were also described as areas of dense seagrass beds. One hypothesis is that the potential increase in TP concentration in these areas was modulated by uptake by the seagrass community and therefore showed no significant change.

The large scale of this monitoring program has allowed us to assemble a much more holistic view of broad physical/chemical/biological interactions occurring over the South Florida hydroscape. Much information has been gained by inference from this type of data collection program: major nutrient sources have been confirmed, relative differences in geographical determinants of water quality have been demonstrated, and large scale transport via circulation pathways have been elucidated. In addition we have shown the importance of looking "outside the box" for questions asked within. Rather than thinking of water quality monitoring as being a static, non-scientific pursuit it should be viewed as a tool for answering management questions and developing new scientific hypotheses. One of the more important management questions to be answered is "Is the water quality better or worse than it used to be?" This monitoring program based on quarterly sample intervals has revealed significant trends in TP, NO_3^- , and TON. We expect to see more trends in other variables as the database grows and we begin to tease out effects of seasonal variability.

Acknowledgments

We thank all the field and laboratory technicians involved with this project, especially Pete Lorenzo. We also thank the captains and crew of the R/V Bellows of the Florida Institute of Oceanography for their professional support of the monitoring program. This project was possible due to continued funding by the US-EPA under Agreement #X994621-94-0 and by the South Florida Water Management District (Contract #C-13178). This is Technical Report #T181 of the Southeast Environmental Research Center at Florida International University.

V. References

- ALLEMAN, R. W., ET AL. 1995. Biscayne Bay surface water improvement and management. Technical supporting document. South Florida Water Management District.
- BOYER, J. N., J. W. FOURQUREAN, AND R. D. JONES. 1997. Spatial characterization of water quality in Florida Bay and Whitewater Bay by multivariate analysis: Zones of similar influence (ZSI). Estuaries 20: 743-758.
- BOYER, J. N., J. W. FOURQUREAN, AND R. D. JONES. 1999. Seasonal and long term trends in the water quality of Florida Bay (1989 - 1997). Estuaries 22: 417-430.
- BOYER, J. N., AND R. D. JONES. 1998. Influence of coastal morphology and watershed characteristics on the water quality of mangrove estuaries in the Ten Thousand Islands - Whitewater Bay complex. Proceedings of the 1998 Florida Bay Science Conference. University of Florida Sea Grant.
- BOYER, J. N., AND R. D. JONES. 1999. Effects of freshwater inputs and loading of phosphorus and nitrogen on the water quality of Eastern Florida Bay, p. 545-561. *In* K. R. Reddy, G. A. O'Connor, and C. L. Schelske (eds.) Phosphorus biogeochemistry in sub-tropical ecosystems. CRC/Lewis Publishers, Boca Raton, Florida.
- BOYER, J. N., AND R. D. JONES. 2002. A view from the bridge: External and internal forces affecting the ambient water quality of the Florida Keys National Marine Sanctuary, p. 609-628. *In* J. W. Porter and K. G. Porter (eds.), The Everglades, Florida Bay, and Coral Reefs of the Florida Keys: An Ecosystem Sourcebook. CRC Press.
- BOYER, J. N., P. STERLING, AND R. D. JONES. 2000. Maximizing information from a water quality monitoring network through visualization techniques. Estuarine, Coastal and Shelf Science 50: 39-48.
- BRAND, L. 1998. The role of groundwater in the Florida Bay ecosystem. Proceedings of the 1998 Florida Bay Science Conference. University of Florida Sea Grant.
- CAPONE, D. G., AND B. F. TAYLOR. 1980. Microbial nitrogen cycling in a seagrass community, p. 153-161. *In* V. S. Kennedy (ed.), Estuarine Perspectives. Academic.
- CHRISTIAN, R. R., J. N. BOYER, D. W. STANLEY, AND W. M. RIZZO. 1991. Multi-year distribution patterns of nutrients in the Neuse River Estuary, North Carolina. Marine Ecology Progress Series 71:259-274.

- ENVIRONMENTAL PROTECTION AGENCY. 1995. Water quality protection program for the Florida Keys National Marine Sanctuary: Phase III report. Final report submitted to the Environmental Protection Agency under Work Assignment 1, Contract No. 68-C2-0134. Battelle Ocean Sciences, Duxbury, MA and Continental Shelf Associates, Inc., Jupiter FL.
- FOURQUREAN, J.W., M.D. DURAKO, M.O. HALL AND L.N. HEFTY. 2002. Seagrass distribution in south Florida: a multi-agency coordinated monitoring program, p. 497-522. *In* J. W. Porter and K. G. Porter (eds.), *The Everglades, Florida Bay, and Coral Reefs of the Florida Keys: An Ecosystem Sourcebook*. CRC Press.
- HIRSCH, R. M., R. B. ALEXANDER, AND R. A. SMITH. 1991. Selection of methods for the detection and estimation of trends in water quality. *Water Resources Research* 27:803-813.
- ISAAKS, E. H., AND R. M. SRIVASTAVA. 1989. *An Introduction to Applied Geostatistics*. Oxford Press, 561 pp.
- JONES, R. D., AND J. N. BOYER 2001. 2000 Annual Report of the Water Quality Monitoring Project for the Florida Keys National Marine Sanctuary. SERC Technical Report #T151.
- KLEIN, C. J., AND S. P. ORLANDO JR. 1994. A spatial framework for water-quality management in the Florida Keys National Marine Sanctuary. *Bulletin of Marine Science* 54: 1036-1044.
- LAPOINTE, B. E., AND M. W. CLARK. 1992. Nutrient inputs from the watershed and coastal eutrophication in the Florida Keys. *Estuaries* 15: 465-476.
- LAPOINTE, B. E., AND W. R. MATZIE. 1996. Effects of stormwater nutrient discharges on eutrophication processes in nearshore waters of the Florida Keys. *Estuaries* 19: 422-435.
- LEE, T. N., M. E. CLARKE, E. WILLIAMS, A. F. SZMANT, AND T. BERGER. 1994. Evolution of the Tortugas gyre and its influence on recruitment in the Florida Keys. *Bulletin of Marine Science* 54: 621-646.
- LEE, T. N., E. WILLIAMS, E. JOHNS, D. WILSON, AND N. P. SMITH. 2002. Transport processes linking South Florida ecosystems, p. 309-342. *In* J. W. Porter and K. G. Porter (eds.), *The Everglades, Florida Bay, and Coral Reefs of the Florida Keys: An Ecosystem Sourcebook*. CRC Press.
- LEICHTER, J. J., S. R. WING, S. L. MILLER, AND M. W. DENNY. 1996. Pulsed delivery of subthermocline water to Conch Reef (Florida Keys) by internal tidal bores. *Limnology and Oceanography* 41: 1490-1501.

- LEICHTER, J. J. , AND S. L. MILLER. 1999. Predicting high-frequency upwelling: Spatial and temporal patterns of temperature anomalies on a Florida coral reef. Continental Shelf Research 19: 911-928
- MEEDER, J. F., J. ALVORD, M. BYRNE, M. S. ROSS, AND A. RENSHAW. 1997. Distribution of benthic nearshore communities and their relationship to groundwater nutrient loading. Final report to Biscayne National Park.
- MOORE, W. S., J. L. SARMIENTO, AND R. M. KEY. 1986. Tracing the Amazon component of surface Atlantic water using ^{228}Ra , salinity, and silica. Journal of Geophysical Research 91: 2574-2580.
- NELSON, D. M., AND Q. DORTCH. 1996. Silicic acid depletion and silicon limitation in the plume of the Mississippi River: evidence from kinetic studies in spring and summer. Marine Ecology Progress Series 136: 163-178.
- NATIONAL OCEANIC AND ATMOSPHERIC ADMINISTRATION. 1995. Florida Keys National Marine Sanctuary Draft Management Plan/Environmental Impact Statement.
- OVERLAND, J. E. AND R. W. PREISENDORFER. 1982. A significance test for principal components applied to cyclone climatology. Monthly Weather Review 110:1-4.
- PITTS, P. A. 1997. An investigation of tidal and nontidal current patterns in Western Hawk Channel, Florida Keys. Continental Shelf Research 17: 1679-1687.
- REDFIELD, A. C. 1958. The biological control of chemical factors in the environment. American Scientist 46: 205-222.
- ROBBLEE, M. B., T. B. BARBER, P. R. CARLSON JR., M. J. DURAKO, J. W. FOURQUREAN, L. M. MUEHLSTEIN, D. PORTER, L. A. YABRO, R. T. ZIEMAN, AND J. C. ZIEMAN. 1991. Mass mortality of the tropical seagrass *Thalassia testudinum* in Florida Bay (USA). Marine Ecology Progress Series 71: 297-299.
- RUDNICK, D., Z. CHEN, D. CHILDERS, T. FONTAINE, AND J. N. BOYER. 1999. Phosphorus and nitrogen inputs to Florida Bay: the importance of the Everglades watershed. Estuaries 22: 398-416.
- RYTHER, J. H., D. W. MENZE, AND N. CORWIN. 1967. Influence of the Amazon River outflow on the ecology of the western tropical Atlantic, I. Hydrography and nutrient chemistry. Journal of Marine Research 25: 69-83.

- SMITH, N. P. 1994. Long-term Gulf-to-Atlantic transport through tidal channels in the Florida Keys. Bulletin of Marine Science 54: 602-609.
- STUMPF, R. P., M. L. FRAYER, M. J. DURAKO, AND J. C. BROCK. 1999. Variations in water clarity and bottom albedo in Florida Bay from 1985-1997. Estuaries 22: 431-444.
- SZMANT, A. M., AND A. FORRESTER. 1996. Water column and sediment nitrogen and phosphorus distribution patterns in the Florida Keys, USA. Coral Reefs 15: 21-41.

List of Tables

Table 1. Summary statistics for each water quality variable in the FKNMS for the period of record. Data are summarized as median (Median), minimum value (Min.), maximum value (Max.), and number of samples (n).

Table 2. Results of principal component analysis are shown as factor loadings (correlations between the raw variables and the principal components) for the first four principal components after VARIMAX rotation. For clarity, loadings with a magnitude >0.450 are shown in boldface type.

Table 3. Statistical summary of water quality zones for the period of record. Data are summarized as median (Median), minimum value (Min.), maximum value (Max.), and number of samples (n).

Table 1. Summary statistics for each water quality variable in the FKNMS for the period of record. Data are summarized as median (Median), minimum value (Min.), maximum value (Max.), and number of samples (*n*).

Variable	Depth	Median	Min.	Max.	<i>n</i>
NO ₃ ⁻	Surface	0.090	0.000	4.418	3769
	Bottom	0.080	0.000	4.455	2302
NO ₂ ⁻	Surface	0.044	0.000	0.710	3778
	Bottom	0.040	0.000	1.732	2308
NH ₄ ⁺	Surface	0.318	0.000	10.320	3777
	Bottom	0.281	0.000	3.876	2306
TON	Surface	10.006	0.000	85.875	3756
	Bottom	8.140	0.000	39.093	2271
TP	Surface	0.195	0.000	1.777	3776
	Bottom	0.185	0.000	1.497	2289
SRP	Surface	0.013	0.000	0.297	3765
	Bottom	0.010	0.000	0.390	2301
APA	Surface	0.060	0.000	1.286	3613
	Bottom	0.050	0.000	0.491	2145
CHLA	Surface	0.250	0.000	15.239	3775
TOC	Surface	204.09	86.98	1653.54	3774
	Bottom	178.79	89.38	883.10	2293
Si(OH) ₄	Surface	0.699	0.000	127.110	3472
	Bottom	0.463	0.000	30.195	2117
Turbidity	Surface	0.60	0.00	37.00	3731
	Bottom	0.50	0.00	16.90	2321
Salinity	Surface	36.2	26.7	40.9	3699
	Bottom	36.2	27.7	40.9	3672
Temperature	Surface	27.3	15.1	39.6	3706
	Bottom	26.7	15.1	36.8	3679
K _d		0.229	0.004	3.410	2900
DO _{sat}	Surface	90.3	38.1	191.6	3671
	Bottom	90.5	32.4	207.0	3626
Δσ _t		0.006	-4.424	6.640	3654

Table 2. Results of principal component analysis are shown as factor loadings (correlations between the raw variables and the principal components) for the first four principal components after VARIMAX rotation. For clarity, loadings with a magnitude >0.450 are shown in boldface type.

Variable	PC1	PC2	PC3	PC4	PC5
NO₃⁻	0.707	0.094	-0.121	0.100	0.004
NO₂⁻	0.608	-0.082	0.354	0.057	0.111
NH₄⁺	0.691	-0.124	0.200	0.001	-0.087
TON	0.001	0.071	0.720	-0.139	0.126
TP/TP	0.220	0.449	-0.047	-0.414	0.499
SRP	0.550	0.245	-0.413	-0.037	-0.112
APA	-0.066	0.693	0.214	0.394	0.041
CHLA	0.001	0.789	-0.135	0.006	-0.217
TOC	0.038	0.073	0.696	0.089	-0.185
Turbidity	0.036	0.591	0.190	-0.261	0.040
Salinity	-0.108	-0.141	-0.010	0.201	0.820
Temp.	-0.001	-0.001	0.141	0.802	0.074
DO	-0.122	0.052	0.109	-0.737	-0.024
%Variance					
Explained	19.0	16.2	10.6	9.5	7.9

Table 3. Statistical summary of water quality in zones for the period of record. Data are summarized as median, minimum (Min.), maximum value (Max.), and number of samples (*n*).

Variable	Zone	Median	Min.	Max.	<i>n</i>
Surface NO ₃ ⁻ (μM)	1	0.11	0.00	2.18	348
	2	0.10	0.00	1.24	48
	3	0.06	0.00	2.30	1486
	4	0.05	0.00	0.76	124
	5	0.20	0.00	2.11	482
	6	0.08	0.00	2.81	712
	7	0.37	0.00	4.42	272
	8	0.06	0.00	2.11	297
Bottom NO ₃ ⁻ (μM)	1	0.03	0.00	1.33	26
	2				0
	3	0.08	0.00	4.46	1396
	4				0
	5	0.12	0.00	1.17	85
	6	0.10	0.00	2.83	593
	7	0.06	0.01	0.39	3
	8	0.06	0.00	1.82	199
Surface NO ₂ ⁻ (μM)	1	0.06	0.00	0.35	348
	2	0.06	0.00	0.24	48
	3	0.03	0.00	0.71	1492
	4	0.05	0.00	0.22	124
	5	0.06	0.00	0.25	484
	6	0.04	0.00	0.42	713
	7	0.09	0.00	0.40	272
	8	0.04	0.00	0.34	297
Bottom NO ₂ ⁻ (μM)	1	0.04	0.02	0.17	26
	2				0
	3	0.04	0.00	1.73	1401
	4				0
	5	0.06	0.00	0.18	85
	6	0.05	0.00	0.36	593
	7	0.06	0.04	0.10	4
	8	0.04	0.00	0.32	199

Variable	Zone	Median	Min.	Max.	<i>n</i>
Surface	1	0.42	0.00	1.84	347
NH ₄ ⁺ (μM)	2	0.40	0.08	10.32	48
	3	0.26	0.00	2.30	1492
	4	0.29	0.00	2.22	124
	5	0.40	0.00	4.03	484
	6	0.29	0.00	5.03	713
	7	0.59	0.00	4.62	272
	8	0.30	0.00	2.21	297
Bottom	1	0.28	0.00	0.95	26
NH ₄ ⁺ (μM)	2				0
	3	0.27	0.00	2.90	1399
	4				0
	5	0.41	0.04	1.52	85
	6	0.31	0.00	3.88	593
	7	0.44	0.30	0.64	4
	8	0.30	0.03	1.26	199
Surface	1	14.38	1.97	50.85	347
TON (μM)	2	13.79	3.41	36.45	48
	3	7.87	0.00	27.94	1482
	4	14.60	3.03	69.19	124
	5	13.25	1.78	85.88	478
	6	9.73	0.39	29.57	708
	7	15.63	1.79	56.83	272
	8	10.56	1.55	32.51	297
Bottom	1	10.33	2.21	30.89	26
TON (μM)	2				0
	3	7.42	0.00	39.09	1387
	4				0
	5	12.87	2.47	24.84	81
	6	9.64	0.00	28.17	577
	7	15.91	15.14	16.68	2
	8	9.24	1.90	27.80	198
Surface	1	0.26	0.09	0.84	348
TP (μM)	2	0.25	0.12	0.62	48
	3	0.18	0.00	0.72	1489
	4	0.24	0.07	0.46	124
	5	0.20	0.02	0.62	485
	6	0.17	0.00	1.78	714
	7	0.21	0.03	0.82	273
	8	0.26	0.08	1.35	295

Variable	Zone	Median	Min.	Max.	<i>n</i>
Bottom TP (μM)	1	0.21	0.13	0.45	25
	2				0
	3	0.18	0.00	1.50	1396
	4				0
	5	0.20	0.02	0.61	81
	6	0.18	0.00	0.72	587
	7	0.18	0.14	0.39	3
	8	0.24	0.10	0.67	197
Surface SRP (μM)	1	0.01	0.00	0.30	348
	2	0.01	0.00	0.22	48
	3	0.01	0.00	0.23	1482
	4	0.01	0.00	0.26	124
	5	0.01	0.00	0.23	482
	6	0.01	0.00	0.21	712
	7	0.01	0.00	0.20	272
	8	0.02	0.00	0.20	297
Bottom SRP (μM)	1	0.01	0.00	0.17	26
	2				0
	3	0.01	0.00	0.39	1394
	4				0
	5	0.01	0.00	0.10	86
	6	0.01	0.00	0.36	591
	7	0.01	0.01	0.11	5
	8	0.02	0.00	0.14	199
Surface APA ($\mu\text{M hr}^{-1}$)	1	0.09	0.01	1.29	345
	2	0.08	0.02	0.55	48
	3	0.04	0.01	0.79	1374
	4	0.08	0.03	0.52	124
	5	0.07	0.01	0.54	479
	6	0.06	0.00	0.45	703
	7	0.10	0.03	0.54	273
	8	0.06	0.02	0.87	267
Bottom APA ($\mu\text{M hr}^{-1}$)	1	0.06	0.02	0.46	22
	2				0
	3	0.04	0.00	0.38	1282
	4				0
	5	0.08	0.00	0.49	84
	6	0.06	0.01	0.43	586
	7	0.05	0.05	0.05	2
	8	0.06	0.02	0.34	169

Variable	Zone	Median	Min.	Max.	<i>n</i>
Surface	1	0.32	0.00	15.24	349
CHLA	2	0.29	0.00	4.95	48
($\mu\text{g l}^{-1}$)	3	0.22	0.00	2.98	1487
	4	0.23	0.00	7.35	123
	5	0.23	0.00	1.79	485
	6	0.25	0.00	1.45	714
	7	0.22	0.00	2.00	272
	8	0.45	0.00	6.81	297
Surface	1	240.9	124.3	1435.4	349
TOC	2	253.6	149.7	505.5	48
(μM)	3	172.8	87.0	1054.8	1488
	4	261.0	150.9	702.5	124
	5	235.5	118.0	670.3	484
	6	190.1	97.1	805.3	711
	7	262.2	151.9	1653.5	273
	8	205.8	105.8	950.4	297
Bottom	1	212.0	121.4	446.0	26
TOC	2				0
(μM)	3	169.8	89.4	883.1	1395
	4				0
	5	219.3	126.4	363.4	85
	6	189.8	92.8	760.8	585
	7	225.9	147.4	281.7	3
	8	196.5	106.3	847.7	199
Surface	1	1.68	0.00	89.00	320
Si(OH) ₄	2	4.21	0.00	55.16	44
(μM)	3	0.24	0.00	17.90	1369
	4	7.38	1.15	88.53	114
	5	2.01	0.00	127.11	445
	6	0.71	0.00	10.75	658
	7	2.29	0.00	37.36	249
	8	1.17	0.00	20.75	273
Bottom	1	0.99	0.00	3.93	23
Si(OH) ₄	2				0
(μM)	3	0.31	0.00	17.89	1288
	4				0
	5	1.69	0.00	30.20	79
	6	0.82	0.00	18.35	543
	7	0.32	0.30	0.34	2
	8	1.03	0.00	6.52	182

Variable	Zone	Median	Min.	Max.	<i>n</i>
Surface	1	1.21	0.00	37.00	343
Turbidity (NTU)	2	1.18	0.20	5.55	48
	3	0.30	0.00	9.30	1463
	4	0.76	0.00	7.70	124
	5	0.83	0.00	16.20	481
	6	0.55	0.00	8.80	712
	7	0.93	0.00	17.35	271
	8	1.29	0.00	11.84	289
	Bottom	1	1.59	0.00	9.10
Turbidity (NTU)	2				0
	3	0.35	0.00	11.18	1376
	4				0
	5	0.80	0.00	16.90	103
	6	0.59	0.00	7.95	594
	7	0.72	0.00	4.89	12
	8	1.50	0.00	15.96	195
	Surface	1	36.2	28.8	39.5
Salinity (psu)	2	36.4	29.6	40.3	48
	3	36.2	26.7	37.8	1468
	4	36.1	27.7	40.9	123
	5	36.3	29.5	40.0	463
	6	36.2	30.1	38.5	691
	7	36.3	28.0	40.2	266
	8	36.2	32.9	38.5	292
	Bottom	1	36.2	28.8	39.5
Salinity (psu)	2	36.3	29.6	40.2	47
	3	36.2	32.6	37.8	1457
	4	36.0	27.7	40.9	123
	5	36.3	29.5	40.0	459
	6	36.3	30.5	38.5	683
	7	36.3	28.0	40.2	264
	8	36.2	32.8	38.5	291
	Surface	1	28.0	18.2	36.1
Temperature (°C)	2	28.0	21.2	32.1	48
	3	26.8	16.3	32.2	1469
	4	28.4	20.9	34.6	123
	5	27.9	15.1	39.6	464
	6	27.7	15.4	33.0	694
	7	28.2	18.4	35.0	266
	8	26.5	18.4	34.5	293

Variable	Zone	Median	Min.	Max.	<i>n</i>
Bottom Temperature (°C)	1	28.0	18.2	33.4	348
	2	27.8	21.2	32.1	47
	3	25.8	16.3	32.0	1458
	4	28.4	20.3	32.7	123
	5	28.0	15.1	33.4	462
	6	27.1	15.4	32.6	685
	7	28.3	18.4	36.8	264
	8	26.4	18.1	34.5	292
K_d (m^{-1})	1	0.339	0.005	2.562	279
	2	0.311	0.021	1.856	34
	3	0.145	0.004	2.531	1192
	4	0.395	0.090	3.274	68
	5	0.343	0.005	3.137	328
	6	0.220	0.016	3.410	558
	7	0.375	0.023	2.983	202
	8	0.290	0.030	2.056	239
Surface DO_{sat} (%)	1	93.1	43.1	165.5	349
	2	92.0	65.4	118.9	48
	3	89.4	48.4	191.6	1447
	4	93.4	65.3	148.2	123
	5	91.6	42.9	153.3	458
	6	89.6	38.1	121.1	688
	7	90.6	38.6	130.9	266
	8	92.0	52.1	169.9	292
Bottom DO_{sat} (%)	1	93.5	41.6	166.9	348
	2	92.2	65.4	125.1	47
	3	89.3	61.0	207.0	1420
	4	94.4	65.2	149.6	123
	5	92.6	42.9	152.2	458
	6	90.1	46.7	144.0	676
	7	90.8	32.4	132.0	264
	8	92.1	41.2	171.4	290
$\Delta\sigma_t$	1	0.000	-0.743	6.528	347
	2	0.000	-0.076	0.371	47
	3	0.056	-3.185	6.640	1447
	4	0.000	-0.370	1.344	123
	5	0.000	-1.440	4.762	455
	6	0.039	-1.512	4.439	679
	7	0.000	-4.424	4.355	264
	8	0.000	-0.743	3.737	292

List of Figures

Figure 1. Map of South Florida showing FKNMS boundary, Segment numbers, and common names for Segments.

Figure 2. The SERC Water Quality Monitoring Network showing the distribution of fixed sampling stations (+) within the FKNMS, Florida Bay, Biscayne Bay, Whitewater Bay, Ten Thousand Islands, and Southwest Florida Shelf.

Figure 3. Contour map of mean of “Inorganic Nutrient” principal component.

Figure 4. Contour map of mean of “Phytoplankton” principal component.

Figure 5. Contour map of mean of “Terrestrial Organic” principal component.

Figure 6. Contour map of mean of “Temperature and DO” principal component.

Figure 7. Contour map of mean of “Salinity/TP” principal component.

Figure 8. Results of objective analysis showing station membership in distinct water quality groups.

Figure 9. Box-and-whisker plots showing median and distribution of NO_3^- , NO_2^- , NH_4^+ , SRP, CHLA, Turbidity, TP, Salinity, TON, and TOC stratified by water quality group. Notches in the box that do not overlap with another are considered significantly different.

Figure 10. Example of contour map of salinity in the region showing freshwater source inputs and marine influences.

Figure 11. Time series box-and-whisker plots of measured variables in the Reef tract/Tortugas group of stations (**Cluster 3**) plotted by survey number.

Figure 12. Time series box-and-whisker plots of measured variables in the Inshore Upper Keys/Hawk Channel Lower Keys group of stations (**Cluster 6**) plotted by survey number.

Figure 13. Time series box-and-whisker plots of measured variables in the Inshore Middle Keys and Lower Keys/Sluiceway group of stations (**Cluster 5**) plotted by survey number.

Figure 14. Time series box-and-whisker plots of measured variables in the Bayside Middle Keys/Inside Backcountry/Inshore Long and Lower Matecumbe group of stations (**Cluster 7**) plotted by survey number.

Figure 15. Time series box-and-whisker plots of measured variables in the North Backcountry/North Sluiceway group of stations (**Cluster 1**) plotted by survey number.

Figure 16. Time series box-and-whisker plots of measured variables in the North Marquesas/North Backcountry group of stations (**Cluster 8**) plotted by survey number.

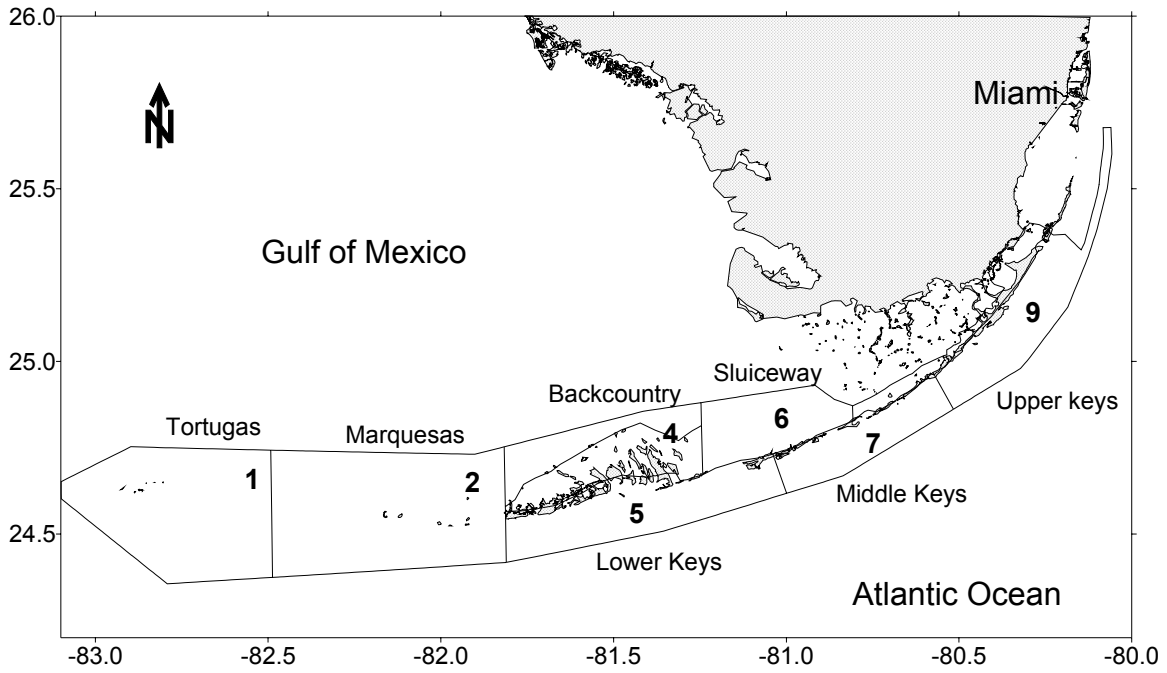


Figure 1.

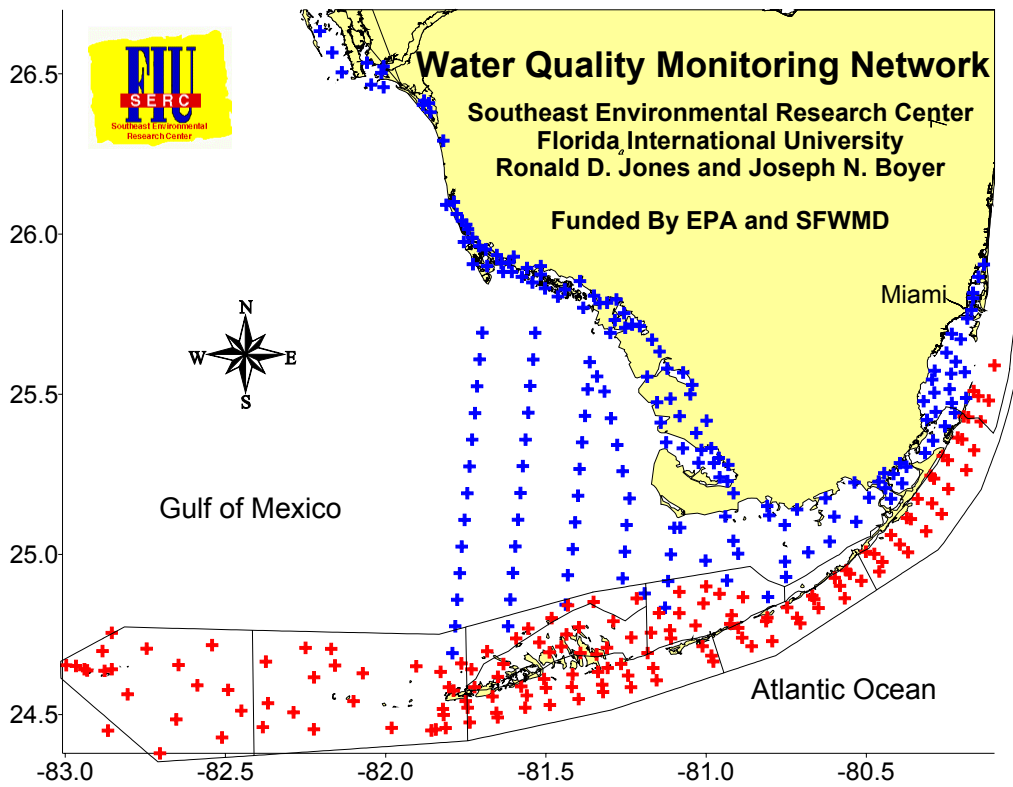


Figure 2.

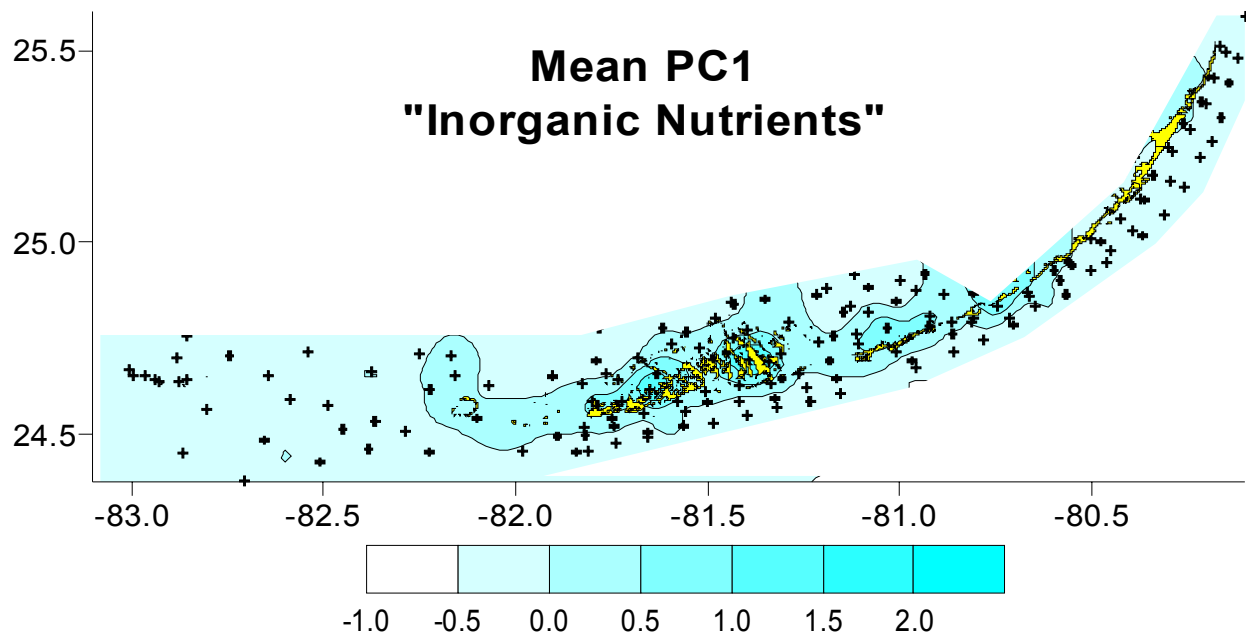


Figure 3.

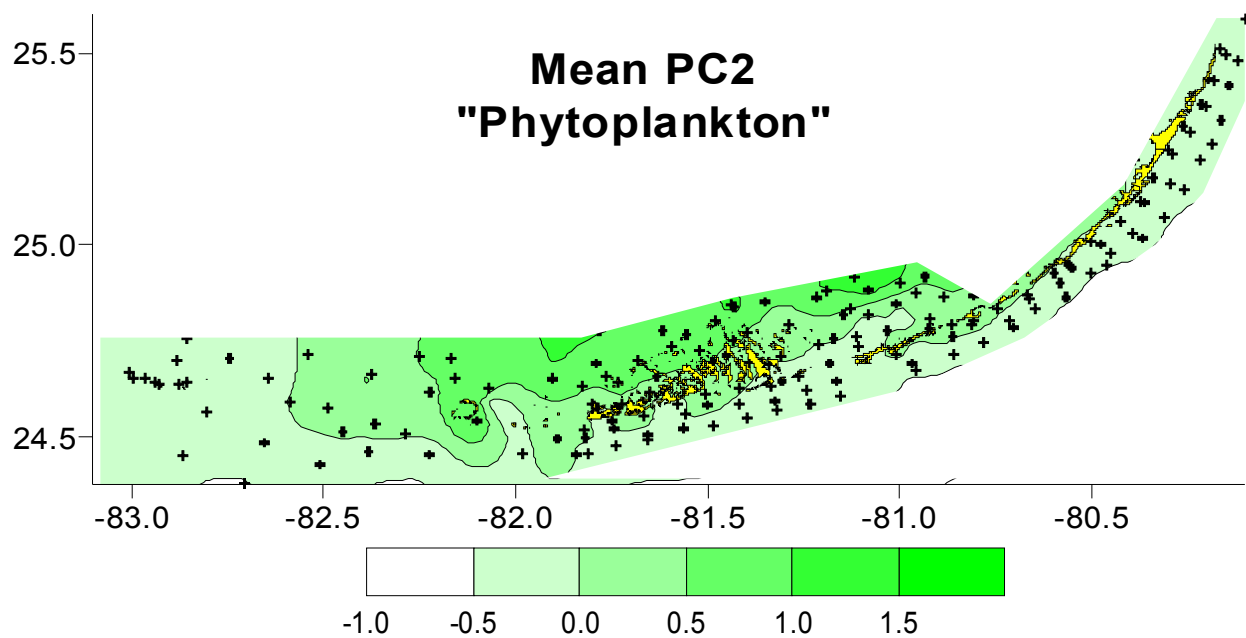


Figure 4.

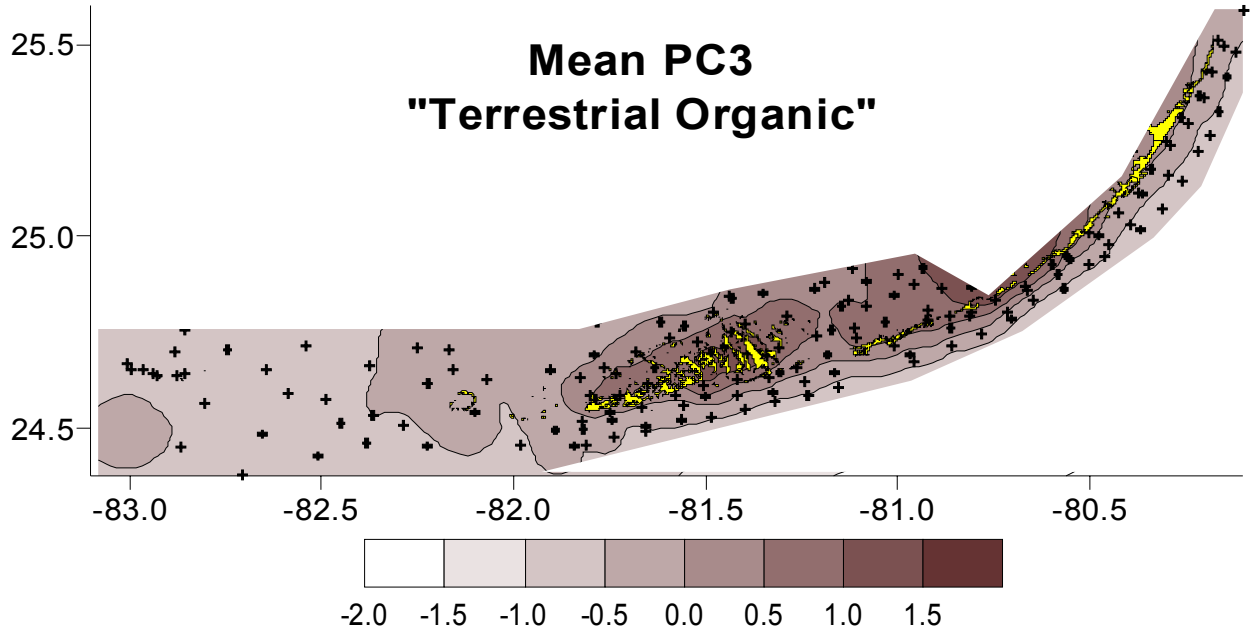


Figure 5.

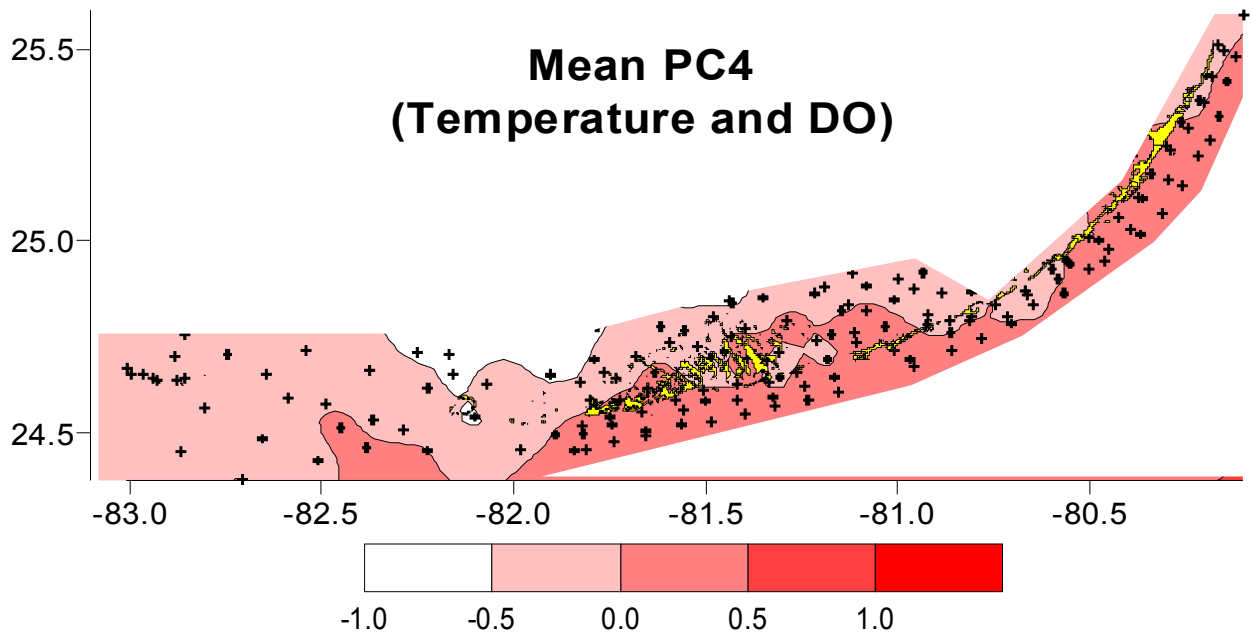


Figure 6.

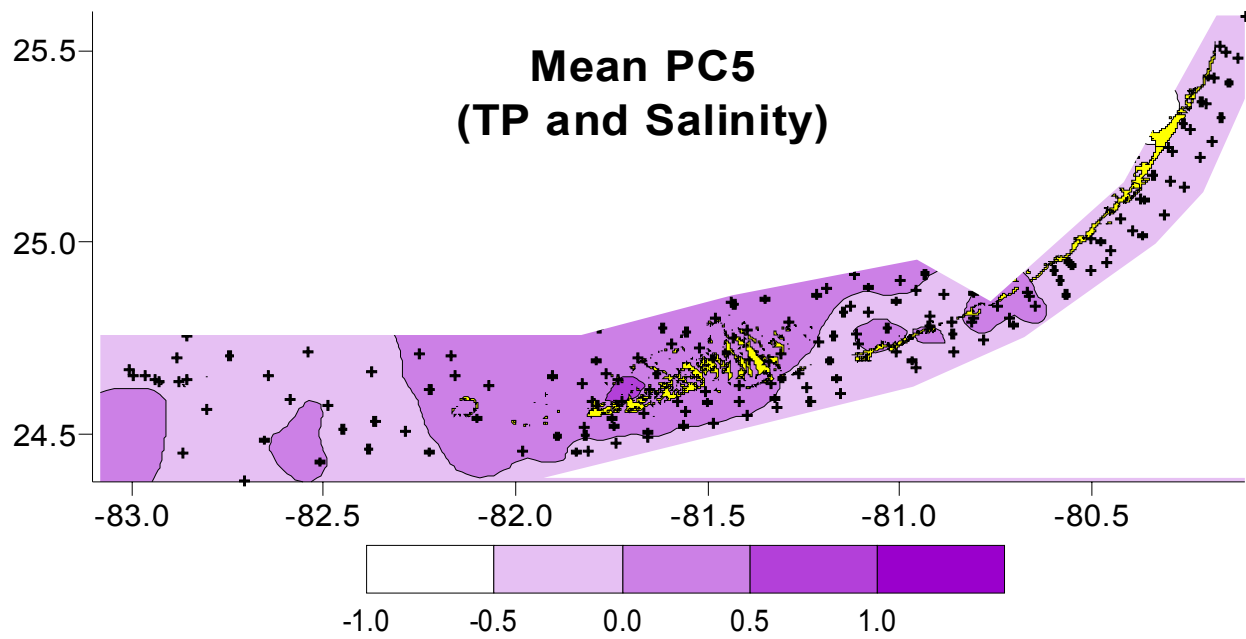


Figure 7.

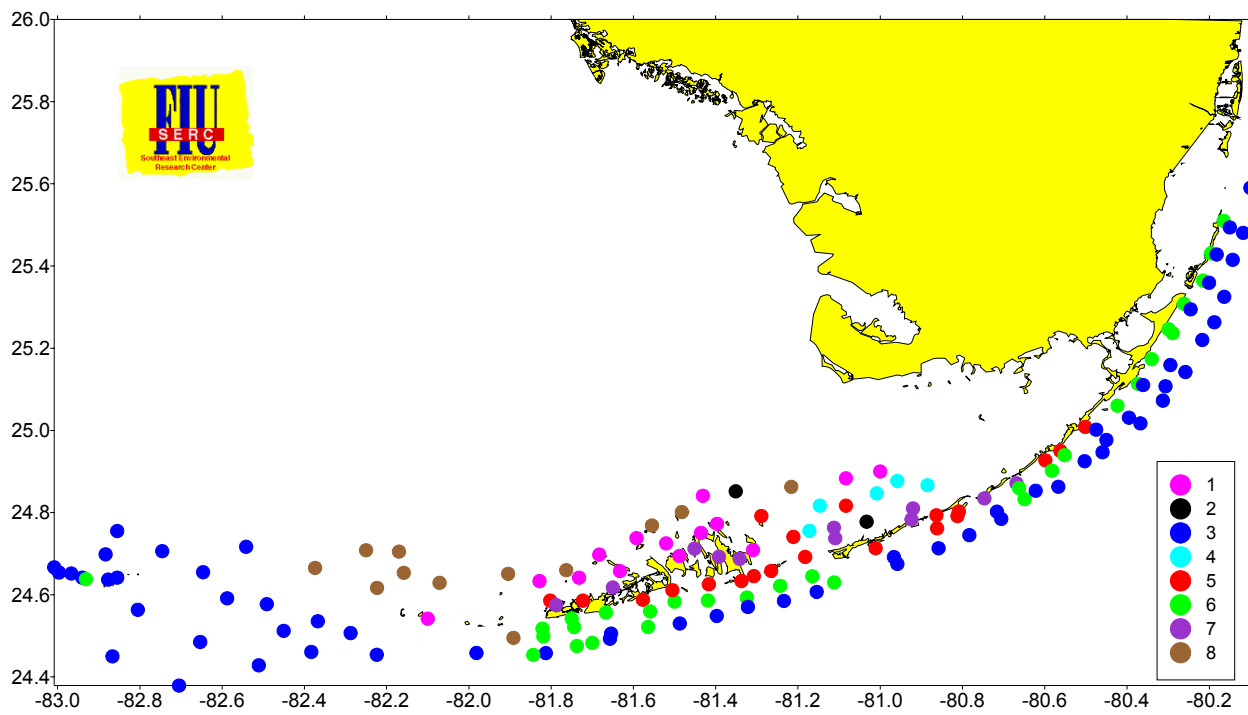


Figure 8.

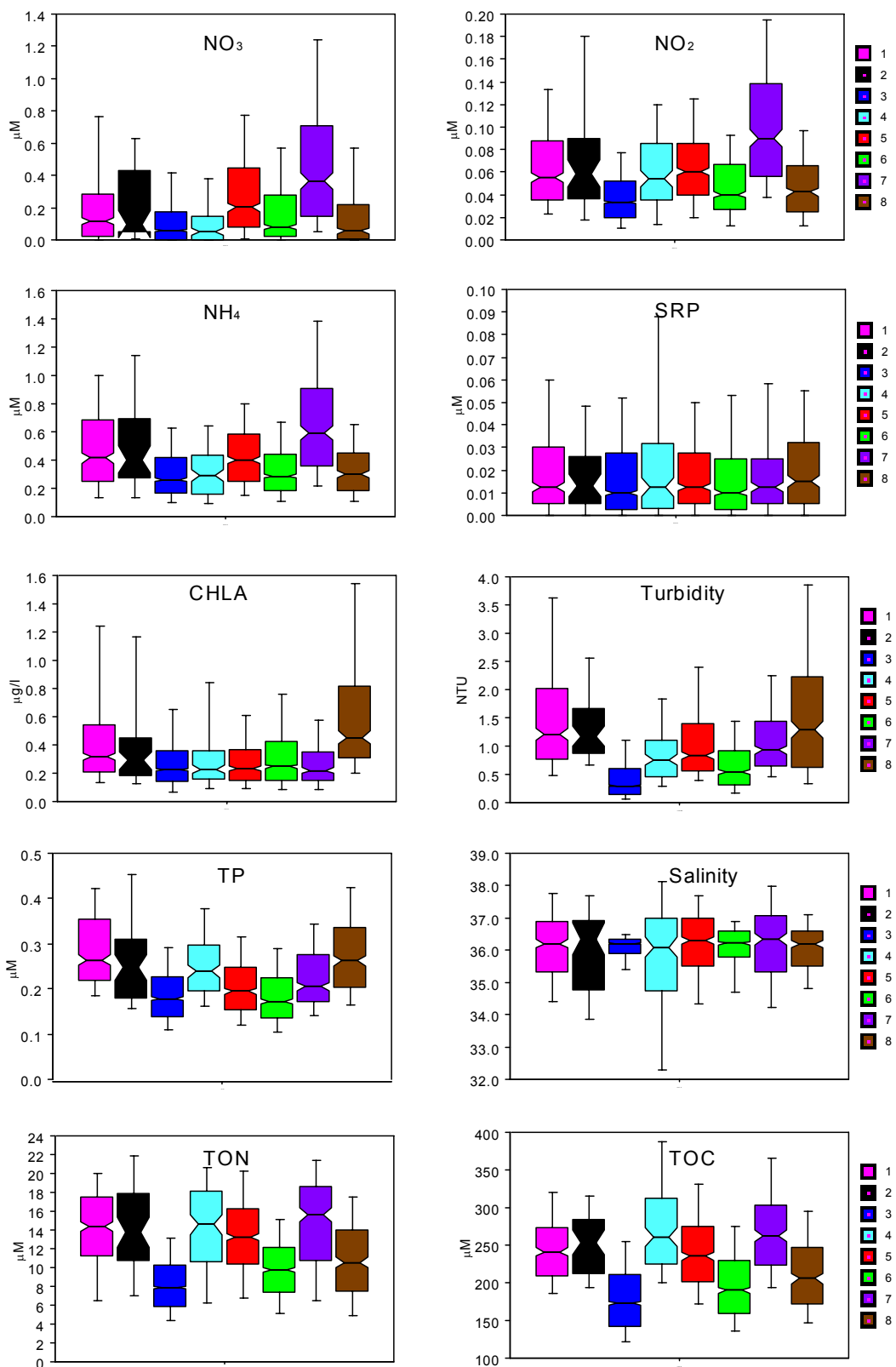


Figure 9.

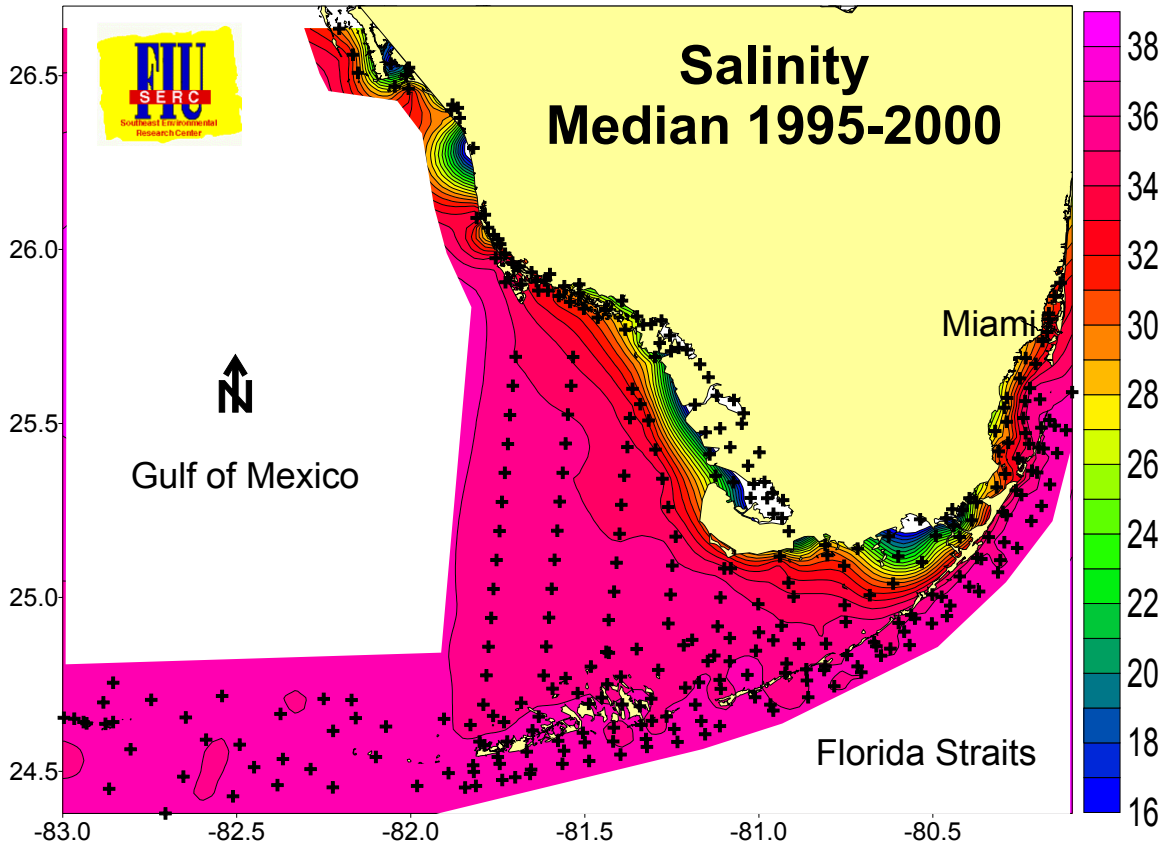


Figure 10.

Cluster 3 – Reef Tract/Tortugas

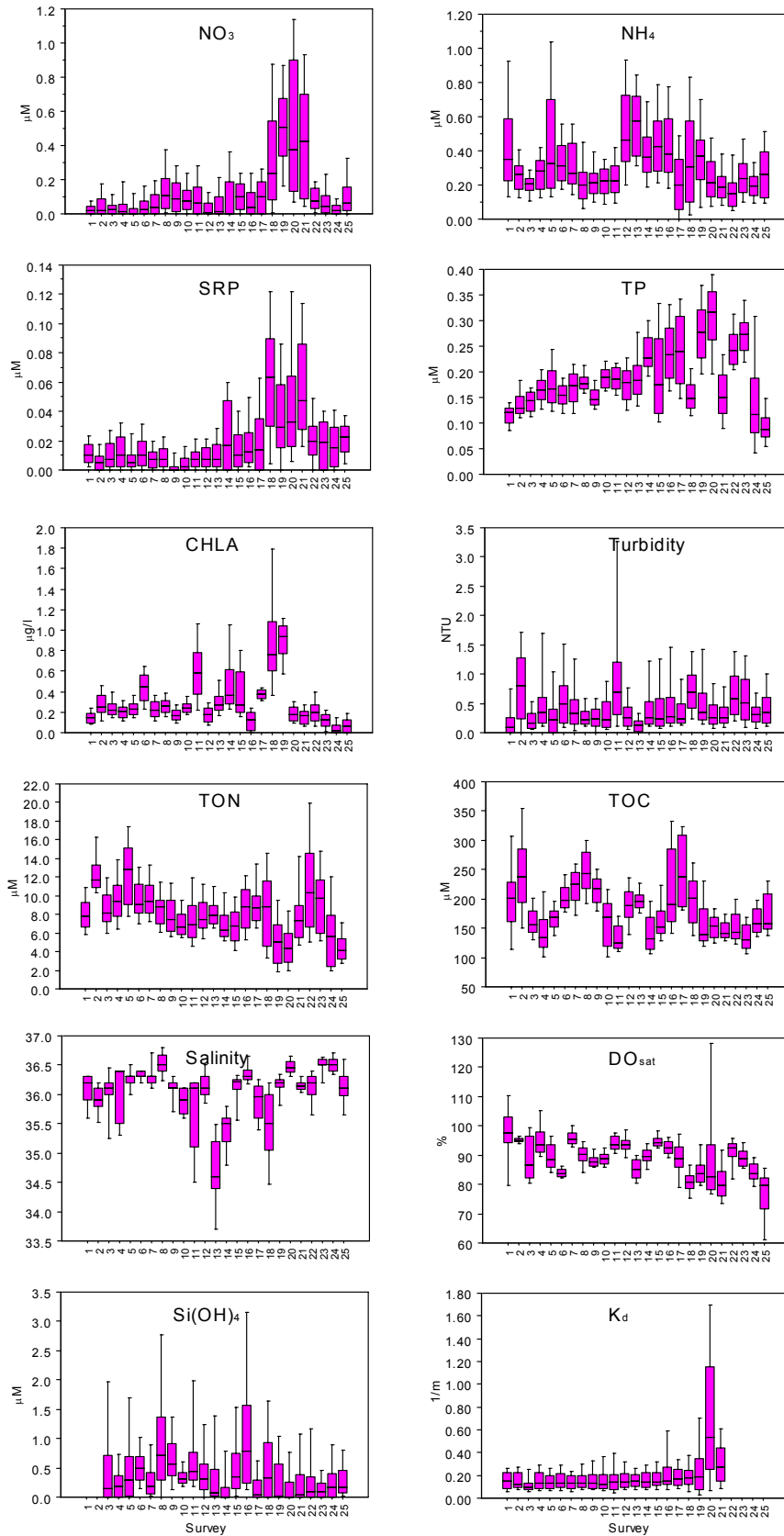


Figure 11.

Cluster 6 – Inshore Upper Keys/Hawk Channel Lower Keys

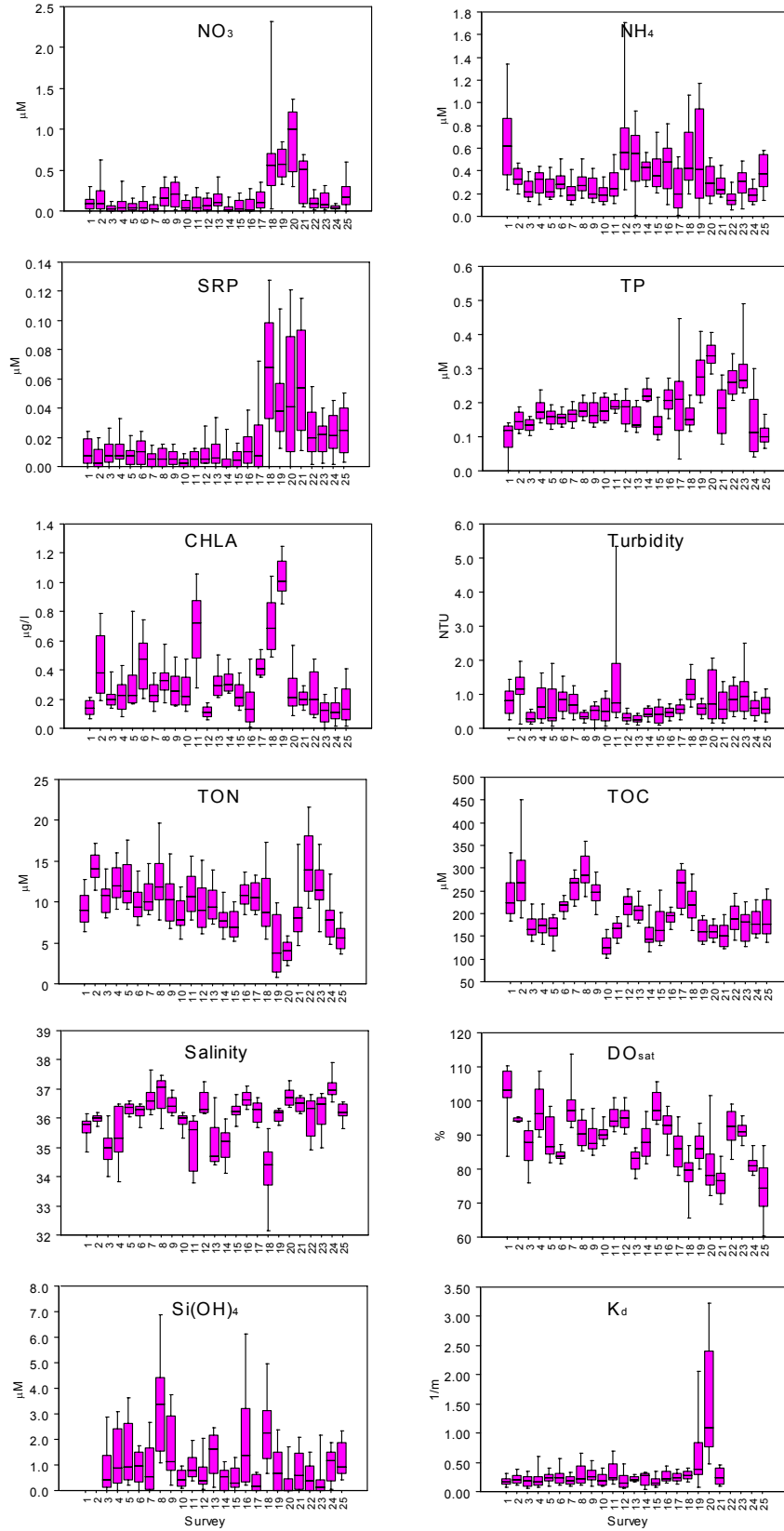


Figure 12.

Cluster 5 – Inshore Middle and Lower Keys/Sluiceway

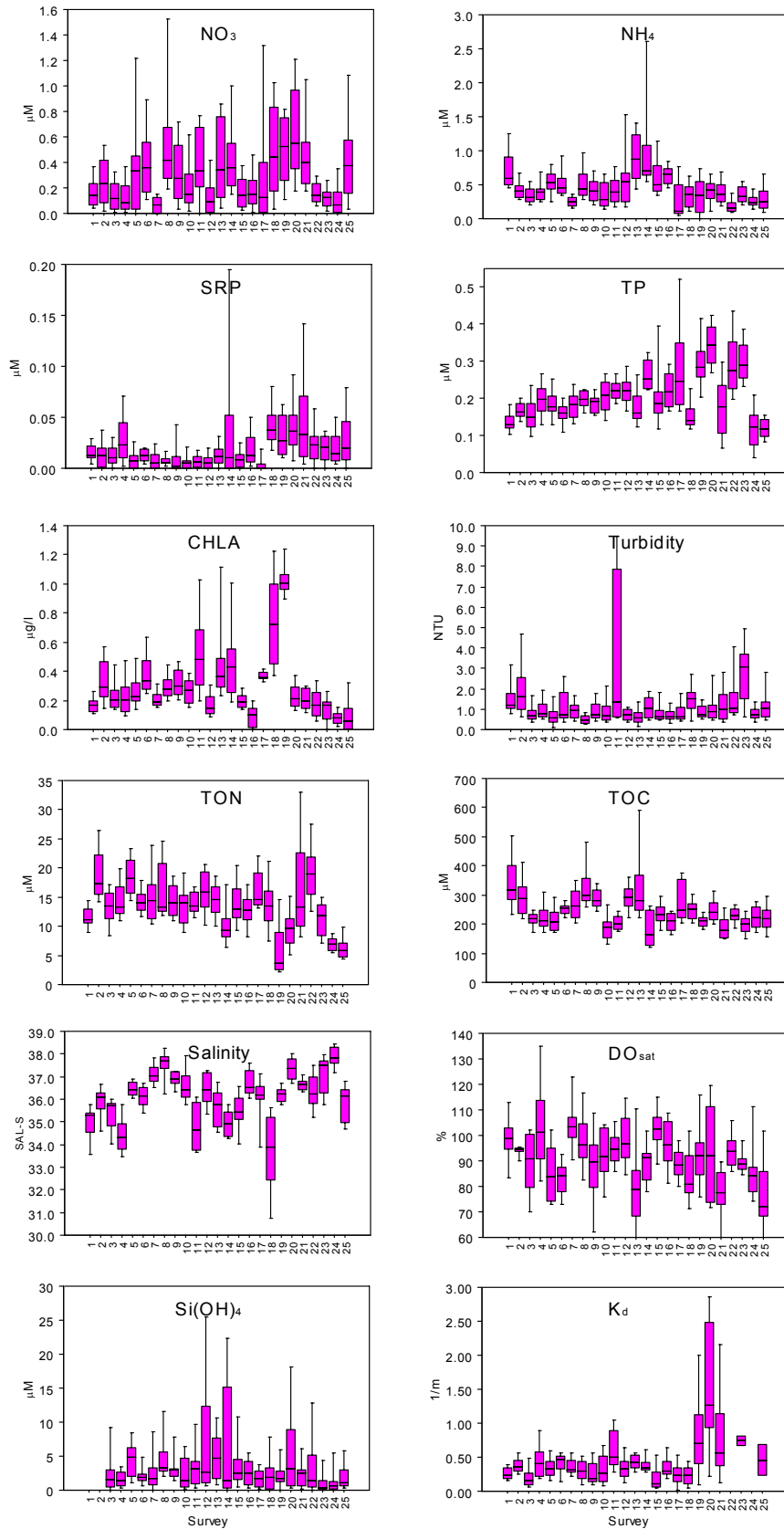


Figure 13.

Cluster 7 – Bayside Middle Keys/Inside Backcountry/Inshore Long & Lower Matecumbe

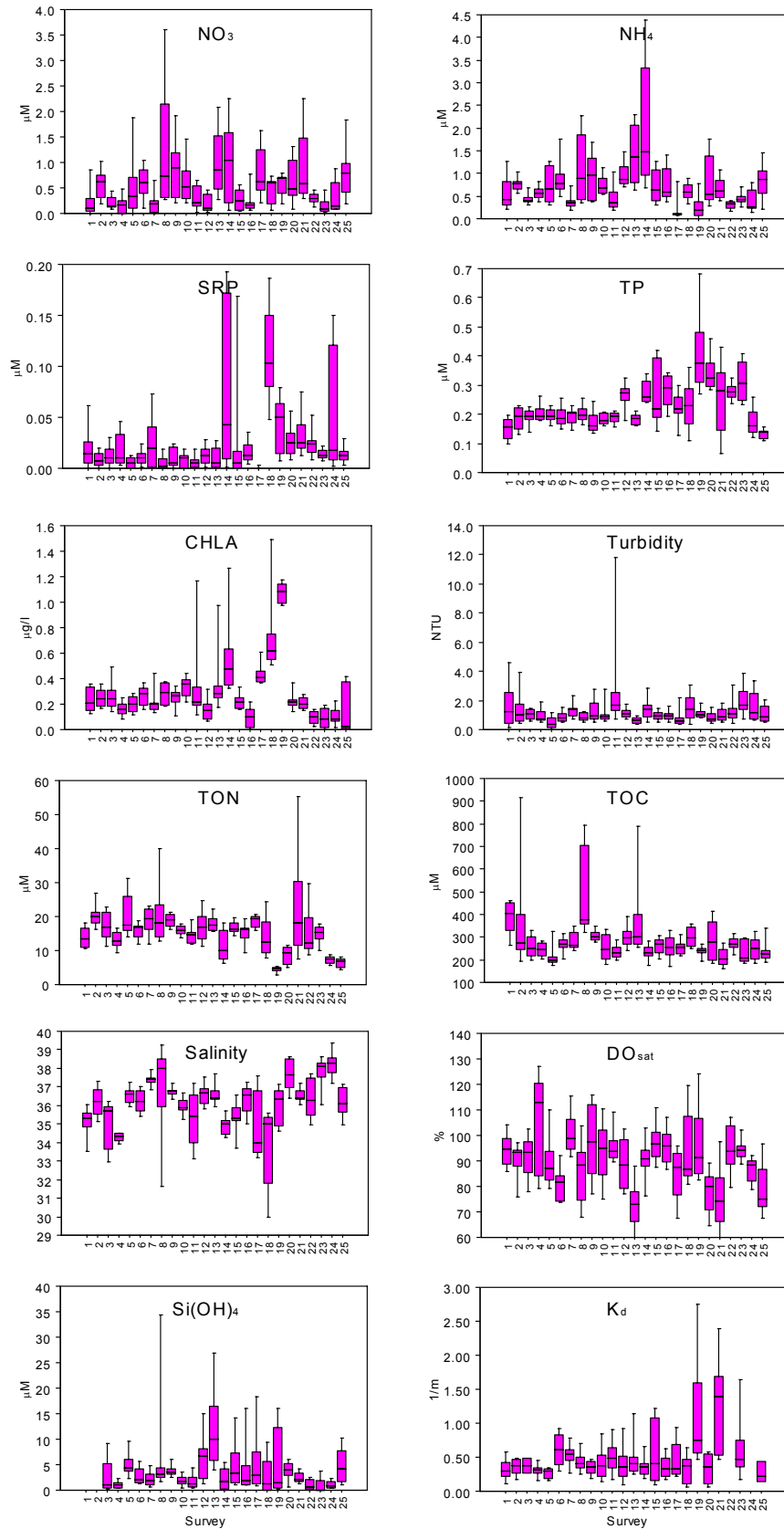


Figure 14.

Cluster 1 – Backcountry/North Sluiceway

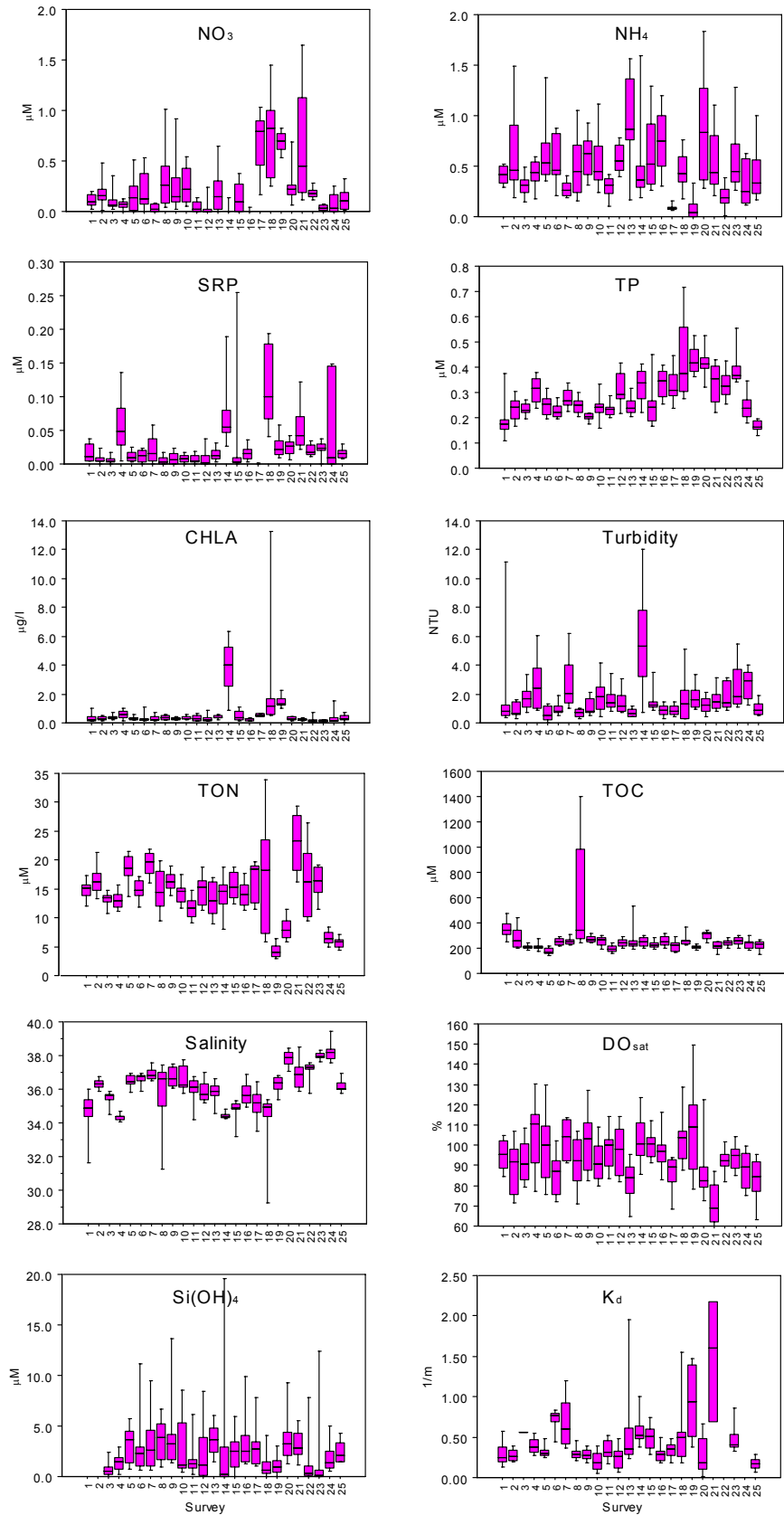


Figure 15.

Cluster 8– North Marquesas/North Backcountry

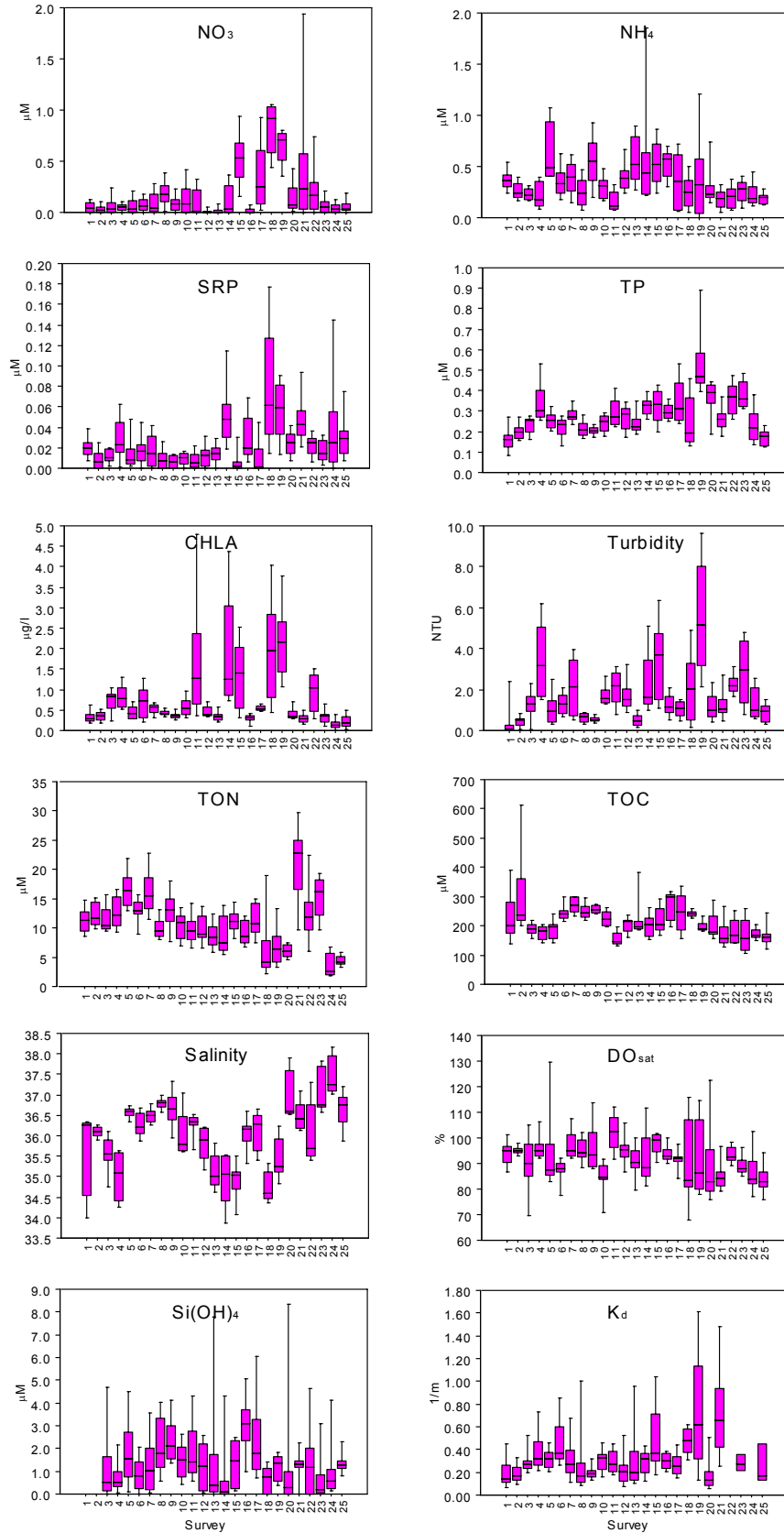


Figure 16.

Appendix

Appendix 1 (<http://serc.fiu.edu/wqmnetwork/FKNMS-CD/ContourMaps.htm>). Color contour maps of selected water quality variables by sampling event. These maps encompass all 354 stations of the SERC Water Quality Monitoring Network which includes the FKNMS, Biscayne Bay, Florida Bay, Whitewater Bay, Ten Thousand Islands, and Southwest Florida Shelf. The data was collected over a period of a month so care should be taken in interpreting these maps as they are not truly synoptic.