

3-2-2016

Slimming Down: Why not feed your need to weed?

Valerie L. Boulos

Florida International University, vloulos@fsu.edu

Judy Born

State College of Florida, Manatee-Sarasota

Alicia K. Long

State College of Florida, Manatee-Sarasota

Ying Zhang

University of Central Florida

Follow this and additional works at: <https://digitalcommons.fiu.edu/glworks>



Part of the [Collection Development and Management Commons](#)

Recommended Citation

Boulos, Valerie L.; Born, Judy; Long, Alicia K.; and Zhang, Ying, "Slimming Down: Why not feed your need to weed?" (2016). *Works of the FIU Libraries*. 40.

<https://digitalcommons.fiu.edu/glworks/40>

This work is brought to you for free and open access by the FIU Libraries at FIU Digital Commons. It has been accepted for inclusion in Works of the FIU Libraries by an authorized administrator of FIU Digital Commons. For more information, please contact dcc@fiu.edu.

Slimming Down

WHY NOT FEED YOUR NEED TO WEED?

Slimming Down: Why Not Feed Your Need to Weed?

- Valerie Boulos – Florida International University
- Judy Born & Alicia K. Long – State College of Florida, Manatee-Sarasota
- Ying Zhang – University of Central Florida

Valerie Boulos

FLORIDA INTERNATIONAL UNIVERSITY

Very Special Thanks to...

- Shawn Tonner
- Eric Michael Gormley
- Elizabeth Lightfoot
- Aminta Mayorga
- ... and all the volunteers who helped count and collect data.

What Does Your Collection Look Like?



- Each shelf – including top and bottom - contain volumes
- Little room for expansion
- Sometimes difficult to reshelve titles

What Does The FIU Collection Look Like?

- Shelf Capacity Study
 - undertaken by Associate Director Shawn Tonner in March 2015
- Measured the General Collection at both libraries
- Measured the JSTOR holdings at both libraries

- Length of a standard library shelf = 36”
- Working capacity of library shelving = 28”

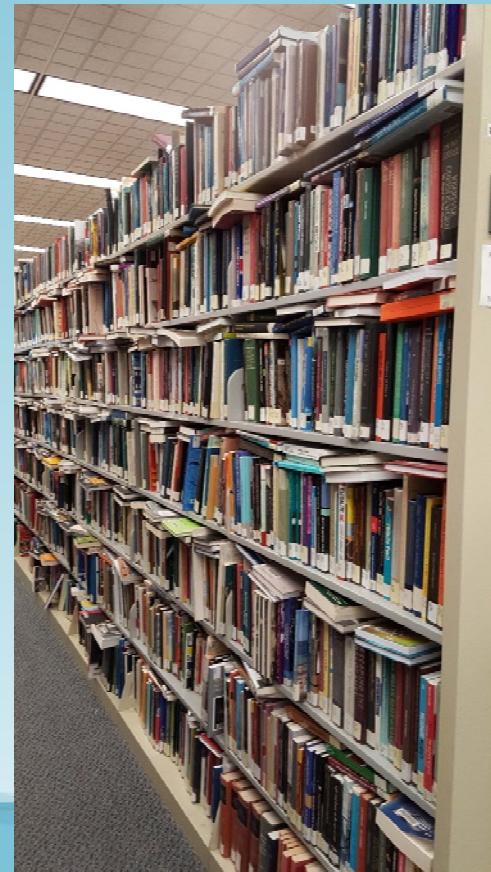
What our collection looks like...

GREEN LIBRARY General Collection	Linear feet of material	Number of shelves assigned	% shelves at or beyond working capacity (28"+)
A	190	76	76%
B	4,670	1,764	82%
C	364	146	74%
D	3,627	1,321	88%
E	1,958	748	85%
F	2,710	934	99%
G	1,258	412	99%
H	9,892	3,497	94%
J	2,112	674	98%
K	818	272	98%
L	1,623	584	93%

Shelves frequently recorded as holding more than 36" of content

One shelf has 54" of material!

What Does Our Collection Look Like?



Preshelving Area



Counting JSTOR I –X

1,743 titles

- Used some existing data for holdings information but needed to update
- 5 volunteers working 2 hours per day
 - 300-400 titles each
- 1 minute per title
- Done in 3-4 days.



Title	JSTOR Holdings	Call Number	GL Print Holdings	Shelf count
Canadian Journal of Philosophy	1971-09-01 - 2009-12-01	B1.C36	v.15-v.38 (1985-2008) NOTE: Missing v.17:no.1 (1987)	
The Journal of Speculative Philosophy	1867-01-01 - 2014-12-01	B1.J73	v.1-v.22 (1867-1888)	
Erkenntnis (1975-)	1975-05-01 - 2011-11-01	B1.J77	v.17-v.59 (1982-2003) NOTE: Missing v.38:no.2 (1993)	###
The Monist	1890-10-01 - 2008-07-01	B1.M7	v.1-v.49 (1890-1965), v.59-v.92 (1975-2009)	#####

Out JSTOR Holdings

GREEN LIBRARY - JSTOR I-X	Linear feet of material	Number shelves assigned	Square feet at 15.5 sf
JSTOR print	3,587	1,255	1389

And we add more things every year...

Average Annual Print Book Growth (based on 4 year average)

GREEN LIBRARY Print Books added	Linear feet	Shelves need at 30"/shelf	Square feet needed at 15.5 sf per dss with 36"aisle
16,300	1,358	543	601

Quick Comparison

Shelves Needed for New Acquisitions

- 543

Shelves housing JSTOR

- 1,255

Removing JSTOR only give 2 ½ years of growth space!

Approval Plan study FY 2012-13

Approval Plan Only

- 10,418 Books
 - 3,142 have no circ or in-house (30%)
 - 3,790 have circulated >1 (36%)
 - 6,890 have in-house >1 (66%)
 - 244 in process or lost/missing (2%)

All Books Added

- 14,989
 - 4,870 have no circ or in-house (32%)
 - 4,789 have circulated >1 (32%)
 - 9,696 have in-house >1 (65%)
 - 870 in process or lost/missing (6%)

Project by Eric Michael Gormley

Print Serials Review

Serials – 1,268

- 1,022 GL
- 266 HL

Standing Orders – 355

- 268 GL
- 87 HL

- 1,623 active orders in total
- 1,241 ordered through EBSCO
- Looking at delayed publication, A&I and online availability
- Evaluation criteria: publication online, remote access allowed, IP authentication supported, access model (access or ownership), electronic same as print, cost, license

Project by Elizabeth Lightfoot

Setting the stage

- Using the data to show need to weed – and reduce
 - Talking to our Faculty Senate Library Committee
 - Talking to our liaisons
- Presented a plan to FSLC and Department Heads
- Starting with a pilot project to gauge comfort levels and process
 - “dead runs” of serials at Hubert Library

What have we weeded?

- Copy 2's – selectively
- Some liaisons selectively reviewing their subject areas
- Trying to replace Lost/Missing titles with DDA e-books

Obviously we have much work left to do!

Judy Born & Alicia Long

STATE COLLEGE OF FLORIDA, MANATEE-SARASOTA

State College of Florida, Manatee-Sarasota

- FTE 6828 (Bradenton/Venice/LWR Campuses)
- 150,000 eBooks
- FY 13/14 71,919 titles in the catalog (Bradenton Campus)
- FY 14/15 39,936 titles in the catalog (Bradenton Campus)
- FY 14/15 18,412 print circulation (all campuses)
- FY 14/15 56,571 eBook circulation

eBrary College Collection
EBSCO PDA
GVRL

JSTOR
Rittenhouse
Springer

OverDrive
Ovid
Wiley



Inspirational Weeding Reading

Rightsizing the Academic Library Collection

Suzanne M. Ward. ALA 2015



- Shaping libraries into the optimal size to serve their current constituents, right mix of materials, content and format, and right set of services to obtain needed information quickly & efficiently.
- Strategic, thoughtful, balanced and planned process to shape the collection.
- Rightsizing Plan & Assessment

“KonMaring” Your Library

Marie Kondo: *The Life Changing Magic of Tidying Up: The Japanese Art of Decluttering and Organizing*

“Imagine what it would be like to have a bookshelf filled only with books that you really love. Isn’t that image spellbinding? For someone who loves books, what greater happiness could there be?”

- Choose what to keep.
- Take each book in hand: *Does it Spark Joy?*
- Discard books that have outlived their purpose.



Weeding Strategies

- Age of Collection in Student Years
 - 18 year-olds born in 1998
- Librarian Subject Specialists responsible for their areas
- Include Faculty in the Process – Faculty “Meet & Weeds”
- “Beyond the Pages” 2-hour workshops
- “Great Purge Day” – all library staff



Beyond the Pages Faculty Workshops

- Personalized worksheet for each faculty member with LC numbers, keywords
- 4-8 attended each workshop – each paired with a librarian
- Overview of our Collection Development Process
- Overview of eBooks vendors:
 - Number of users – Downloading - Printing
 - Faculty explored our eBook collections
- Faculty in the stacks with a librarian and book trucks: weed & recommend updates

Faculty & Collection Development

- **Nursing:** Annually – only want current 5 years on the shelves
- **Mathematics:** Annually – 2 faculty rotate years
- **Language & Lit:** Worked with a Professor to create smaller areas, created a spreadsheet with call #s and # of shelves. 20 Faculty signed up to weed
- **Health Sciences:** When they're preparing for accreditation
- **Paralegal:** Annually
- **Film History:** Faculty & adjunct for 4 hours during the summer
- **Natural Science:** After weeding, each recommend someone for another section, small groups, Chemistry adjunct.

Great Purge – about 23,000 books weeded

- Planning for new building:
 - Ordering new shelving
 - Bookstore arrangement



- Determining square footage for book collection
- Goals established for future collection

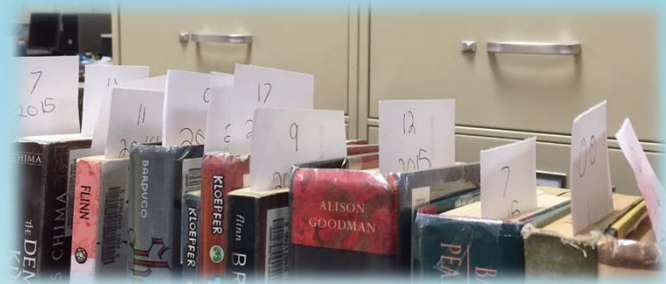
Great Purge Teams

- Great Expectations PR 4202
- 60 Seconds to Shine
- You Say To-Ma-To P 1035 – PM 8213
- Some Time in the Sun PS 1097 – PS 2601
- The Beat Goes On PN 452 – PQ 7477
- The Past in the Present PS 261 – PS 3503
- “Worker Bees” in Tech Services



Weeding Guidelines

- Reports – books that didn't circulate in the last 5 years
- Relevancy to the current curriculum
- Check Usage & Last Date of Use
- Check:
 - Outdated info / Superseded editions / Faded Labels / Multiple copies



Process

- Used reports for Uncirculated last 5 Years
 - Keepers – leave on shelf
 - Add to update cart – look for newer print editions or titles
 - Add to PDA cart
- Books to be withdrawn moved to Tech Services
 - WD in circulation module
 - Stamp “Discarded”
 - Box for Better World Books
 - Tech Services Staff later continue the process to withdraw from OCLC



Replacements

- Print
 - EBSCO PDA 1000 Titles
 - Art Design Humanities
 - Business & Technology
 - Language & Literature
 - Natural Science
 - Nursing
 - Physical Therapy
 - Social Sciences
- Updates & literary works
- \$7,375 for 65 PDA purchases
- Rethinking the Femme Fatale in Film Noir*
- Fair Trade for All*
- Sir Gawain & the Green Knight*
- Metallurgy for the Non-metallurgist*
- Nursing Theories*
- Physical Rehabilitation*
- Ethics in the Age of Terror & Genocide*

Book Disposal

- Local Book Vendor: pays for whatever he selects – money matched by Foundation
- Better World Books:
 - 120 boxes in 2015
 - \$62.00 10% for books they sell, they donate many of our books to others
- Free Book Cart
- Other Uses for Books



Ying Zhang

UNIVERSITY OF CENTRAL FLORIDA
YZHANG@UCF.EDU

UCF Libraries

- 1.8 million print volumes
- Main library John C. Hitt Library
- 226,000 Sq ft
- 46,000 library users annually
- Increasing demand on studying and collaborative space
- Shelf space growth limit

Why FLARE

- In State storage
- Existing collaborations
- Existing infrastructure
- Doesn't affect volume count

Selection Guidelines

- Online availability for periodicals
 - Perpetual
 - Stable access
- 2nd copy low use monographs
- VHS

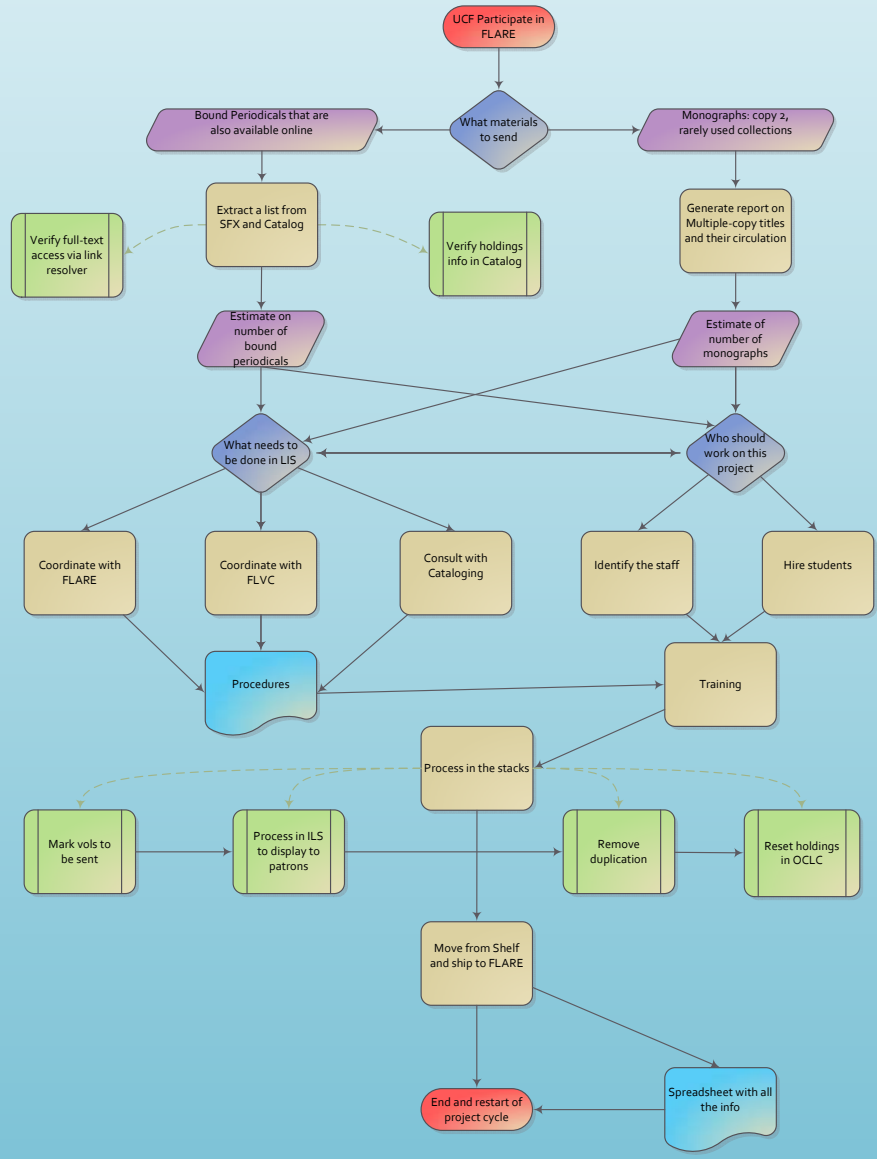
Workflow

- Design based on the envisioned end product
 - OPAC display that patrons will see
 - Storage facility requirements
 - Movers most efficient workflow
 - Space constraints
- Work with all stakeholders and all expertise
 - Meetings and constant communication
- Draft a procedure

Project Management

- Identify staffing
 - Librarian, staff or students?
 - Which department in Technical Services?
 - How many and how much \$
- Identify equipment
 - Mobile stations
 - Software and hardware
- Request funding





Crucial Factors

- Data
- Communication and Feedback
- Staffing
- Flexibility

User centered

- Mindful of the end users
- Mindful of the partners



Stats

- Periodicals: 77,139
- Monograph: 16,694
- VHS & Guides: 13,417

Result

- Stacks consolidation
- New study space
- Minimal usage impact

Thank you!

Questions?

VBOULOS@FIU.EDU
BORNJ@SCF.EDU
LONGA@SCF.EDU
YZHANG@UCF.EDU