

Fall 11-8-2007

As Bees In Honey Drown

Department of Theatre, Florida International University

Follow this and additional works at: https://digitalcommons.fiu.edu/theatre_programs



Part of the [Theatre and Performance Studies Commons](#)

Recommended Citation

Department of Theatre, Florida International University, "As Bees In Honey Drown" (2007). *Department of Theatre Production Programs*. 52.

https://digitalcommons.fiu.edu/theatre_programs/52

This work is brought to you for free and open access by the Department of Theatre at FIU Digital Commons. It has been accepted for inclusion in Department of Theatre Production Programs by an authorized administrator of FIU Digital Commons. For more information, please contact dcc@fiu.edu.

FIU THEATRE presents

As **Bees**
in honey drow



A PLAY BY DOUGLAS CARTER BEANE

**Directed by
Jennifer Smith**

November 8-11 & 15-18, 2007

FLORIDA INTERNATIONAL UNIVERSITY
WERTHEIM PERFORMING ARTS CENTER MAINSTAGE
SW 107th Avenue and the 16th Street Entrance
Miami, FL

COLLEGE OF ARCHITECTURE + THE ARTS
School of Theatre, Dance and Speech Communication

DIRECTOR'S NOTES

When I first read this play, I wondered why a dark comedy about the overly saturated, indulgent aspect of our society would prove entertaining, and if indeed it had anything new to say. Through the process of this production, I realized that Mr. Carter Beane is not necessarily attacking those qualities in our society, but celebrating them with a cynical wink. Society's misled spiritual search for love and recognition in money and fame has made us vulnerable. While some find fulfillment in the material, others find themselves sacrificing their own artistic integrity for the almighty dollar. But within the commonality of our search there remains our truest ancient need...to immortalize that which defines us.

" ' Give me your tired, poor huddled masses' .

Yearning to dream.

Irony besets the 'city that never sleeps'
As dreamers make their Mecca here.

Wanting to take a bite from this big apple.

Give me your poets, your actors,
Your talented masses.

Give me your musicians, your writers,
Your singers and dancers.

Give me your dreamers.

For 'I lift my lamp beside the golden door' of this city.

This city where the lights never dim.

Where aspirations are realized
And reality is fantasy.

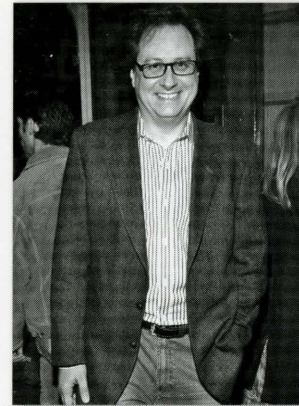
Send them to me.
This is my City.

New York."

Written by Jaren Rivas (playing the title role of Evan Wyler) with excerpts from *The New Colossus* by Emma Lazarus

-Jennifer Smith

ABOUT THE PLAYWRIGHT



Douglas Carter Beane has written the screenplays for *To Wong Foo, Thanks for Everything, Julie Newmar*; *Advice From A Caterpillar* (Best Film, Aspen Comedy Festival, Best Feature, Toyota Comedy Festival) and the upcoming *Skinner's Eddy*. His plays include *As Bees In Honey Drown* (Outer Critics Circle John Gassner Playwriting Award, Drama Desk Best Play Nomination); *The Country Club* (LA Times Critics' Choice & Dramalogue Awards); *Music From A Sparkling Planet*; *Advice From a Caterpillar* (Outer Critics Circle Award Nomination); *White Lies*; *Devil May Care and Old Money*.

His new musical, *The Big Time* (with music and lyrics by Douglas J. Cohen) was just produced by Drama Dept. His new play, *The Little Dog Laughed* will be at Second Stage this December.

-Drama Department.org

ABOUT FIU THEATRE

FIU Theatre offers a Bachelor of Arts (BA) and a Bachelor of Fine Arts (BFA) degree. The program offers a wide range of courses taught by qualified faculty and provides an environment for a well-rounded education through academia and hands on experience with our productions. **FIU Theatre** currently presents four productions annually. In addition, our theatre organization, Dramatic Paws, presents at least one student- produced show per year.

The Herbert and Nicole Wertheim Performing Arts Center is home to **FIU Theatre** and includes a beautiful 200 seat proscenium theatre, a large black box studio theatre, a costume shop, a scene shop, two dressing rooms and a green room.

If you are interested in learning more about the program, our course listings, theatre rental or how to be involved with **FIU Theatre**, please call or write to:

FIU Theatre, WPAC 131

11200 SW 8th Street
Miami, FL 33199
305.348.2895

AS BEES IN HONEY DROWN

A Play by Douglas Carter Beane

Directed by
Jennifer Smith

Scenic Design
Brenden McCune

Lighting Design
Philip Watson

Costume Design
Veronica González

Production Manager
Marilyn R. Skow

Stage Manager
Michelle Cote

Technical Director
Celso Peruyera

**Assistant Technical
Director**
Geordan Gottlieb

Sound Design
Jade Goodridge

ACKNOWLEDGEMENTS

AS BEES IN HONEY DROWN

Was originally produced in New York City by the Drama Dept. Douglas Carter Beane, Artistic Director; Michael Rosenberg, Managing Director and subsequently by Edgar Lansbury, Everett King, Randall L. Wreghitt, Chase Mishkin, Steven M. Levy, Leonard Soloway.

Originally presented in a workshop production at Portland Stage Company as part of their *Little Festival of the Unexpected*: Greg Learning, Artistic Director; Tom Werder, Managing Director.

The Play was developed in part with the support of
The Sundance Playwrights Laboratory.

Presented by special arrangement with Dramatists Play Service, Inc., New York

CAST

Alexa Vere de Vere Natalie Birriel
Evan Wyler Jaren Rivas
Photographer, et al Michael Fernandez
Ronald, et al Paul Pérez
Amber, et al Ashley Álvarez
Carla, et al Denisse Schwartz

TIME

The Present

PLACE

New York City

The play will be performed in two acts with a ten minute intermission.
Concessions are available in the rotunda, next to the box office.
Flash photography and the videotaping or other video or audio recording
of this production is strictly prohibited.

DEPARTMENT OF THEATRE ADMINISTRATION

Chair/Artistic Director Lesley-Ann Timlick
Administration Marianna Murray
Marketing Coordinator Laverne Cuzzocrea
Box Office Manager Ryan Capiro
Office Assistant MoniqueTavares

PRODUCTION STAFF

Assistant Stage Managers Maribel Martínez, Douglas Reilly
Light Board Operator Alain Mesa
Sound Board Operator Joshua Dobarganes
Electrics Crew Alain Mesa, Damian Charkiewiez
John Guzman, Adam Ramos
Set and Paint Crew Gregory Contreras, Brian Espinoza,
Kevin Preval, Ryan Rodríguez, Daniel Nieves,
Angélica Reyes, Pedro Mir
Fly Crew Greg Contreras, Celso Peruyera
Floor Crew Sara Nelson, Giovanni Velazquez
Prop Master Amir Moussawei
Assistant Prop Mistress Ashley Álvarez
Assistant to the Costume Designer Marlissa Mendoza
Costume Mistress Francesca Toledo
Costume Crew Cecelia Niebla, Ginelle Rosenberg,
Lilly Páez, Shane Ramkissen, Rozanne Rudd
Hair and Make-Up Michael Leon
House Manager Carolina Pozo, Lali Watts
Marketing and Publicity Deanna Drayton, Raiza Licea,
José Paredes
Poster/Postcard Design Morgan Howland Cook
Ushers Krysta Jamison, Yesenia Lauzurique
Box Office Assistant Kathleen Moreno
Will Call/Concession Melissa Santana, Almaris Camps

This is Your Opportunity to **SHINE!**

Subscribe to receive our **Broadway Package** for your Office or Group
For \$360 Package Includes:

- 15 VIP Tickets per season to opening night of any show
- 15 Season Brochures
- A Tour of FIU Theatre on Opening Night Before the Show
- Invitation to Exclusive VIP Reception with the Cast on Opening Night
- Tickets to the remaining shows of the season at insanely discounted rates

OR

Subscribe to receive our off Broadway Package
For \$100 Package Includes:

- 4 VIP Tickets per season to opening night of any show
- Season Brochure
- A Tour of FIU Theatre on Opening Night Before the Show
- Invitation to Exclusive VIP Reception with the Cast on Opening Night
- Tickets to the remaining shows of the season at insanely discounted rates

If you would like to subscribe to one of our packages, be on our mailing list, or make a donation, please fill out this portion of your playbill and turn it in to the ushers. All donations are tax deductible!

Name: _____

Phone No. _____ Email: _____

Snail Mail Address: _____

Broadway Package Please Off Broadway Package Please Mailing List Please

I would like to donate to FIU Theatre and receive my tax deductible receipt.
Please contact me with details

**FIU THEATRE PRESENTS ITS
2007-2008 SEASON**

MIRACLE TOMATO – JANUARY 18 - 19, 2008

In a professional solo performance, Jessica Cerullo portrays Angelina, who employs the assistance of her triplet sisters as well as her ancestor to set the historical record straight for her audience in a tale of love, bioengineering and the search for home.

ELECTRICIDAD – FEBRUARY 7 - 17, 2008

Luis Alfaro's brilliant and caustically funny "hispanicized" retelling of Euripides' classic tale of vengeance and matricide. ELECTRA updated and set in the Barrios of east LA.

HIP HOP MUSICAL – APRIL 3 - 13, 2008

A new musical by FIU Theatre Alum and Broadway star of RENT, ANDY SEÑOR. Based on interviews and studies of inner city school kids.

SPECIAL THANKS

Jessica Siskind

Jessica Rodriguez

Wayne Robinson

12th Avenue Graphics

Stagecraft, Technical Skills1 and Technical Lab Classes

&

Marianna Murray for her tireless ability
to keep the theatre department on track!
