

8-2007

# Differentiation of Toxic Molds via Headspace SPME-GC/MS and Canine Detection

Robert T. Griffith

*International Forensic Research Institute and Department of Chemistry and Biochemistry, Florida International University, griffith@fiu.edu*

Krish Jayachandran

*Southeast Environmental Research Center and Department of Environmental Studies, Florida International University, jayachan@fiu.edu*

Kateel G. Shetty

*Department of Earth and Environment and Southeast Environmental Research Center, Florida International University, shettyk@fiu.edu*

William Whitstine

*International Forensic Research Institute, Florida International University*

Kenneth G. Furton

*International Forensic Research Institute and Department of Chemistry and Biochemistry, Florida International University, furtonk@fiu.edu*

Follow this and additional works at: [https://digitalcommons.fiu.edu/chemistry\\_fac](https://digitalcommons.fiu.edu/chemistry_fac)

 Part of the [Chemistry Commons](#)

---

## Recommended Citation

Griffith RT, Jayachandran K, Shetty KG, Whitstine W, Furton KG. Differentiation of Toxic Molds via Headspace SPME-GC/MS and Canine Detection. *Sensors* (Basel, Switzerland). 2007;7(8):1496-1508.

This work is brought to you for free and open access by the College of Arts, Sciences & Education at FIU Digital Commons. It has been accepted for inclusion in Department of Chemistry and Biochemistry by an authorized administrator of FIU Digital Commons. For more information, please contact [dcc@fiu.edu](mailto:dcc@fiu.edu).

## Differentiation of Toxic Molds via Headspace SPME-GC/MS and Canine Detection

Robert T. Griffith<sup>1,2</sup>, Krishnaswamy Jayachandran<sup>1,3,4</sup>, Kateel G. Shetty<sup>3,4</sup>, William Whitstine<sup>1,5</sup> and Kenneth G. Furton<sup>1,2,\*</sup>

<sup>1</sup> International Forensic Research Institute, Florida International University, Miami, FL 33199, USA

<sup>2</sup> Department of Chemistry and Biochemistry, <sup>3</sup> Department of Environmental Studies, <sup>4</sup> Southeast Environmental Research Center, Florida International University, Miami, FL 33199, USA, <sup>5</sup> Florida Canine Academy, Safety Harbor, FL 34695, USA; E-mail: furtonk@fiu.edu

\* Author to whom correspondence should be addressed. E-mail: furtonk@fiu.edu

Received: 2 August 2007 / Accepted: 2 August 2007 / Published: 13 August 2007

---

**Abstract:** Indoor mold growth has recently become a concern in the legal world in regards to insurance litigation. Hazardous mold exposure to humans has been linked to many acute and chronic adverse health effects including death. As it grows, mold produces several types of primary and secondary metabolites, including microbial volatile organic compounds (MVOCs). Microbial volatile organic compound emission may be used as a preliminary indication of a mold infestation that is invisible to the unaided eye. The objective of the study is to identify the unique odor signatures of three species of molds, *Aspergillus versicolor*, *Penicillium chrysogenum*, and *Stachybotrys chartarum* by SPME-GC/MS analysis. Determining the compounds that are emitted by the selected species has made it possible to conduct validation studies of canine detection of these mold species through a series of field tests.

**Keywords:** toxic molds, SPME-GC/MS, canine detection

---

### 1. Introduction

Mold spores and conidia are virtually ubiquitous, spreading through the air all over the world. They are often deposited indoors, and, in the right indoor conditions, mold can flourish and become a serious problem to the building's inhabitants. The most important factor governing mold growth is moisture conditions. Fungal growth begins at a water activity near 0.8 aw, and significant

quantities of mycotoxins are produced when aw reaches 0.95. Mold growth is most conducive under a scenario where a water intrusion takes place. Molds flourish under these conditions, and upon dry conditions, spores and conidia are released, dispersed and deposited around the building [1]. It has been reported that there is an association between human upper respiratory tract symptoms and damp mold infested buildings [2]. A few common genera of indoor molds are *Penicillium*, *Aspergillus*, *Alternaria*, *Stachybotrys*, and *Cladosporium*.



**Figure 1.** Visible mold growth in Florida home.

Mycotoxins are secondary metabolites produced by molds that act as a defense against plants, bacteria, and other fungi. The World Health Organization International Agency for Research on Cancer studied various mycotoxins for their carcinogenic potentials, and concluded that many were indeed carcinogenic or cancer promoting [3]. Recent studies in mice exposed to mycotoxin have shown severe neurotoxicity and inflammation within the nose and brain [4]. Molds also produces MVOCs that are less toxic than mycotoxins. However, studies have shown that children living in homes with elevated MVOC levels have a higher prevalence of asthma, hay fever, and eye irritation [5]. MVOCs are emitted into the air and can be inhaled. More than 500 different MVOCs have been identified and used to identify hidden sources of fungal contamination [6, 7]. The MVOCs comprising the odor signatures of a given species of mold can vary based on the substrate on which it is growing [8, 9]. MVOCs are emitted during all stages of mold growth. Some have very low odor thresholds, where they may be detectable by unaided human olfaction. Different MVOCs vary in toxicity, and one of the most cytotoxic is 1-octen-3-ol [10].

Recently in the United States, interest in the mold detection industry has increased due to an increased awareness of the possible harmful effects of human exposure to toxic indoor molds and property damage that occurs as a result of a mold infestation. Preliminary sampling of indoor mold

can be done by a variety of methods, such as moisture meters, laser particle counters, IR thermometers, and air sampling. Most methods used today involve taking random samples throughout the building in an attempt to locate the source of the mold spores. These techniques are very expensive and time consuming. Though high concentrations of mold may present in buildings, but because of their oftentimes invisible nature, locating the mold is a major problem. It is important to know the hot spots of mold growth for precise sampling and remediation procedures.

Canines have been widely used by law enforcement and forensic investigators in detecting accelerants, drugs, explosives, and human remains for years. Dogs have an exceptional sense of smell due to their increased number of olfactory receptors, allowing them to be specially trained to smell compounds that are virtually undetectable by human smell. They are also ideal since they will work solely for a reward or praise from their handler.

The specialized mammalian behavior “sniffing” improves the canine’s olfactory abilities by causing turbulence in the nasal passages, effectively increasing transport of the odor molecules to the olfactory receptors. It is known that detector dogs are capable of detecting parts per million to parts per billion of volatile organic compounds and recent studies have begun to definitively identify the odor signature chemicals and thresholds of canine detection for a variety of specimens [11]. This is significant since detector dogs must be able to detect small amounts of the volatile organic compounds and move to areas of greater concentration to find the source. Detector dogs can also accurately discriminate between target odors and similar non-target odors. They can be trained to alert to one or two of the most abundant odor components to detect a substance.

In Europe, canines have been trained to detect mold for years, but scientific evidence on the validity of the method is lacking. In the United States, interest in the mold detection industry has increased greatly in recent years due to an increase in awareness of the possible harmful effects of human exposure to toxic indoor molds and property damage that occurs as a result of a mold infestation. It has been determined that elevated MVOC levels can be a preliminary hint of indoor mold growth, so canines that are trained to detect these compounds should be able to discover indoor molds that are non-visible [12]. Pending scientific validation, using canines as a mold detection method would cut down on cost, time, and labor for the mold detection industry.

## 2. Methods

Plates of Potato Dextrose Agar (PDA) were prepared for both *Penicillium chrysogenum* and *Aspergillus versicolor*. Plates of Corn Meal Agar (CMA) were prepared for *Stachybotrys chartarum*. Growth media was autoclaved at 121° C for 15 minutes and plated under sterile conditions in a Biological Safety Cabinet. To further ensure the media was not contaminated, plates were incubated at room temperature for a week before samples were cultured. Samples were subsequently cultured in triplicate and were incubated at 30° C for one week. The plates were then examined and purified onto other uncontaminated PDA and CMA plates and incubated for another week at 30° C. A small 1 cm x 1 cm piece of mold and agar was then excised from each plate and aseptically transferred to ½ liter Mason jars. These jars were pre-lined with PDA or CMA, and

served to allow headspace samples to be taken over successive weeks while offering the mold a constant and sufficient supply of a nutrient source.

Solid-phase microextraction (SPME) parameters were adjusted through a series of optimization studies, where SPME fiber type, length of exposure, and volume of headspace were varied. Initially, the volatile organic components were extracted from the headspace of the vials using three different SPME fiber types: PDMS/DVB (65  $\mu\text{m}$  StableFlex), CAR/PDMS (75  $\mu\text{m}$ ), and CW/DVB (70  $\mu\text{m}$  StableFlex). Blanks of all SPME fibers were run before exposure to the sample to eliminate carryover from previous exposures. Fibers were exposed to the sample for 1, 10, and 18 hours. It was ultimately determined that CW/DVB StableFlex fibers extracted the most compounds from the headspace at an exposure time of 18 hours, using  $\frac{1}{2}$  L Mason jars to house the mold samples. After exposing the fibers to the headspace of the *Aspergillus versicolor*, *Penicillium chrysogenum*, and *Stachybotrys chartarum* mold samples, as well as mold-free PDA and CMA for 18 hours, they were introduced to the GC/MS for thermal desorption and analysis. To test the effect of time on odor signatures of mold species, the *Stachybotrys chartarum* sample was analyzed using SPME-GC/MS for three consecutive weeks.



**Figure 2.** Photograph of initial Solid Phase Microextraction apparatus.

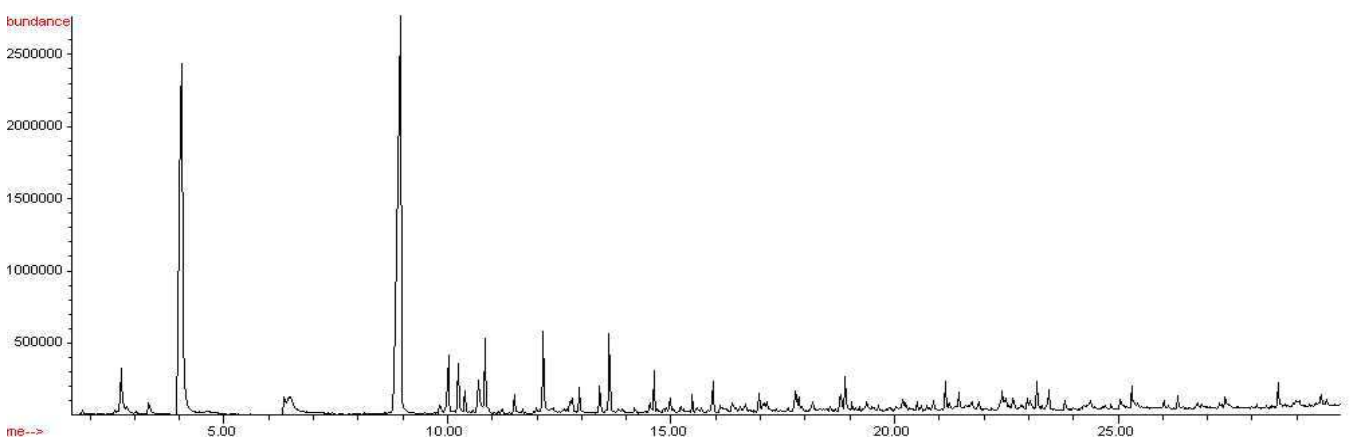
A splitless injection was used on an Agilent Technologies HP5-MS capillary column with a length of 30 m, an outer diameter of 0.25 mm, and a film thickness of 0.25  $\mu\text{m}$ . Helium was used as a carrier gas, and had a flow rate of 1 milliter /minute. The initial temperature was 40°C, and that temperature was held for 5 minutes. Next, there was a 10°C/min increase to 280°C, and then that temperature was held for 1 minute. The mass spectral data from the resulting chromatograms was compared to the NIST 1998 library for identification.

Canine field tests were run with four pre-trained dogs at the Florida Canine Academy in Safety Harbor, Florida. The *Aspergillus versicolor*, *Penicillium chrysogenum*, and *Stachybotrys chartarum* mold samples were placed in separate round plastic containers with punctured lids to allow the volatiles to escape. Negative controls were also set up which contained no toxic molds. The field tests were then executed in a double-blind fashion with an impartial evaluator to record all alerts and nonalerts for each dog, according to specifications set forth to increase reliability of canine field tests.

### 3. Results

From the chromatographic data obtained, the results indicate that the odor signatures for *Aspergillus versicolor*, *Penicillium chrysogenum*, and *Stachybotrys chartarum* are very different. The CW/DVB fiber successfully extracted 22 known compounds that matched the NIST 98 library from the headspace of *Aspergillus versicolor*, 19 known compounds from the headspace of *Penicillium chrysogenum*, and 29 known compounds from the headspace of *Stachybotrys chartarum*.

Twenty two collective microbial volatile organic compounds were extracted from the headspace of *Aspergillus versicolor* and detected by SPME-GC/MS analysis: arsenous acid, 1-octen-3-ol, 3-octanone, 3-octanol, 1-hexanol, hexanoic acid, pentanedinitrile, benzene, 2,3-dimethoxytoluene, 2-undecanone, benzamide, 1-butanol, 2-propenoic acid, 1,4,7,10,13,16,19-hepta-2-cycloheptacosanone, 1-tridecanol, 2-tridecanone, dodecanoic acid, 2,6-bis(1,1-dimethylethyl)-4-(1-oxypropyl)phenol, 9H-fluoren-3-ol, tetradecanoic acid, n-butyl laurate, and n-hexadecanoic acid. Compounds detected in the headspace of PDA were subtracted from the list of compounds detected in the headspace of *Aspergillus versicolor*, as they cannot be proven to be microbial volatile organic compounds at this time. Table 1 below list the compounds detected, as well as their retention times and % peak areas.

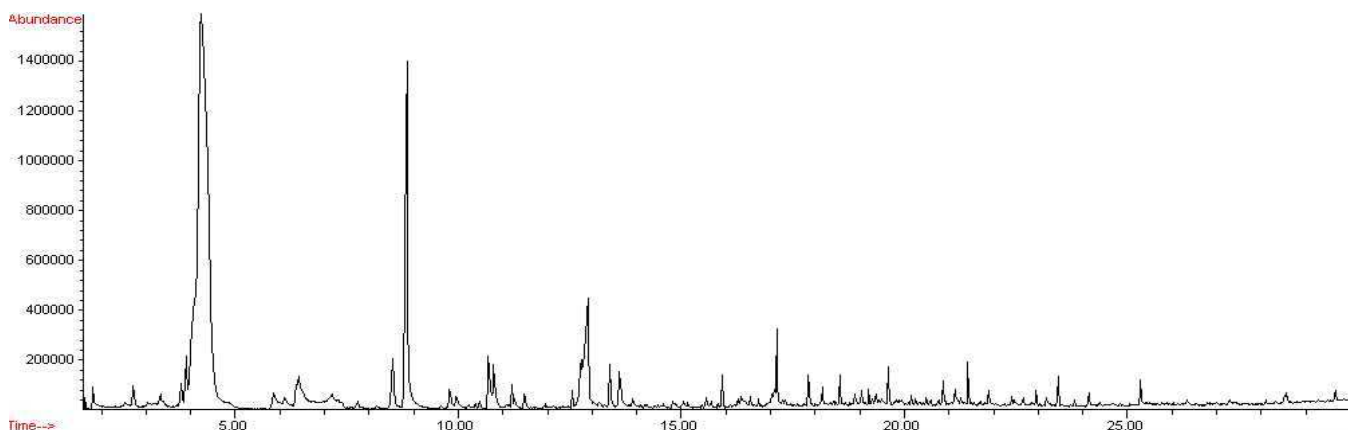


**Figure 3.** Chromatogram of *Aspergillus versicolor* headspace, CW/DVB, 18 hr exposure.

**Table 1.** Compounds detected in headspace of *Aspergillus versicolor* on PDA, 18 hour exposure, CW/DVB (StableFlex), with peak areas and retention times of each compound.

Compound	Peak Area	Retention Time
Arsenous acid	0.65	6.35
1-octen-3-ol	1.73	10.24
3-octanone	0.72	10.38
3-octanol	0.14	10.57
Ethanol	2.14	10.84
1-hexanol	0.14	10.57
Hexanoic acid	0.52	11.49
Pentanedinitrile	0.15	11.98
Benzene	1.93	13.62
Phenol	0.14	14.20
2,3-dimethoxytoluene	0.12	14.70
2-undecanone	0.36	15.48
Benzamide	0.26	16.11
1-butanol	0.58	16.97
2-propenoic acid	0.24	17.10
1,4,7,10,13,16,19-heptaoxa-2-cycloheneicosanone	0.62	17.80
1-tridecanol	0.26	17.85
2-tridecanone	0.09	18.15
Cyclododecane	0.13	18.57
Dodecanoic acid	0.98	18.90
2,6-bis(1,1-dimethylethyl)-4-(1-oxypropyl)phenol	0.07	19.88
Cyclotetradecane	0.26	20.25
9H-fluoren-3-ol	0.16	20.60
Tetradecanoic acid	0.58	21.14
n-butyl laurate	0.53	21.44
n-hexadecanoic acid	0.73	23.19
n-butyl myristate	0.61	23.46
Hexadecanoic acid	0.40	25.31

Similarly, a variety of compounds were observed from the headspace of the *Penicillium chrysogenum*, as shown in Figure 4. Nineteen collective microbial volatile organic compounds were extracted from the headspace of *Penicillium chrysogenum* and detected by SPME-GC/MS analysis: arsenous acid, 1-methoxycyclohexane, furan, 1-hexanol, nonanal, hexanoic acid, benzene, naphthalene, 1-undecanol, oxirane, cyclododecane, dodecanoic acid, butyl caprate, 1-docosene, tetradecanoic acid, Z,E-2-methyl-3,13-octadecadien-1-ol, n-butyl laurate, 1-heptadecanol, and 1,4,7,10,13,16,19-heptaoxa-2-cycloheneicosanone. Compounds detected in the headspace of PDA were subtracted from the list of compounds detected in the headspace of *Penicillium chrysogenum*, as they cannot be proven to be microbial volatile organic compounds. Table 2 below list the compounds detected, as well as their retention times and % peak areas.



**Figure 4.** Chromatogram of *Penicillium chrysogenum*, CW/DVB, 18 hour exposure.

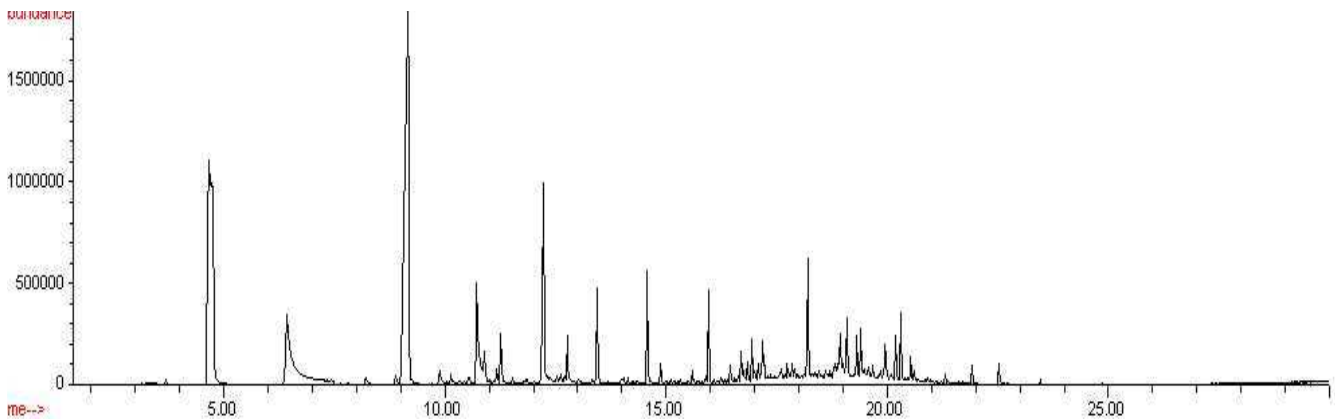
**Table 2.** Compounds detected in headspace of *Penicillium chrysogenum* on PDA, 18 hour exposure, CW/DVB (StableFlex), with peak areas and retention times of each compound.

Compound	Peak Area	Retention Time
Arsenous acid	0.43	6.37
1-methoxycyclohexane	0.23	7.74
Furan	0.16	10.48
1-hexanol	0.39	11.21
Nonanal	0.24	12.56
Hexanoic acid	5.33	12.91
Benzene	1.08	13.61
Naphthalene	0.12	13.92
1-undecanol	0.15	16.55
Oxirane	1.21	17.13
Cyclododecane	0.61	17.85
Dodecanoic acid	0.22	18.88
Phenol	0.22	19.04
Butyl caprate	0.22	19.21
1-docosene	0.15	19.28
Cyclotetradecane	0.13	20.25
Heptadecane	0.13	20.50
Tetradecanoic acid	0.38	21.14
Z,E-2-methyl-3,13-octadecadien-1-ol	0.10	21.27
n-butyl laurate	0.48	21.43
1-heptadecanol	0.13	22.42
n-butyl myristate	0.41	23.45
1,4,7,10,13,16,19-hepta-2-cycloheptacosanone	0.10	23.82
Hexadecanoic acid	0.34	25.30

Twenty nine collective microbial volatile organic compounds were extracted from the headspace of *Stachybotrys chartarum*, as shown in Figure 5: benzyl alcohol, cyclopropane, nonanal, hexanoic acid, benzene, 1,3-pentanediol, acetic acid, nonanol, ethanol, decanal, benzothiazole, nonanoic acid, 1-undecanol, tetradecane, diphenyl ether, oxirane, cyclotetradecane, 2,5-cyclohexadiene-1,4-dione, 1-pentadecene, cyclododecane, benzoic acid, n-nonylcyclohexane, 1-heptadecene, methyl pentadecyl ether, n-butyl laurate, octadecane, cyclohexadecane, hexadecanoic acid, and octadecanoic acid. The compounds found in the headspace of Corn Meal agar alone were



subtracted from the composite list of compounds found in the headspace of *Stachybotrys chartarum*, as they cannot be credited as metabolites of the molds. Table 3 below list the compounds detected, as well as their retention times and % peak areas.



**Figure 5.** Chromatogram of *Stachybotrys chartarum*, CW/DVB, 18 hr exposure, week 3

**Table 3.** Compounds detected in headspace of *Stachybotrys chartarum* on CMA, 18 hour exposure, CW/DVB (StableFlex), with peak areas and retention times of each compound.

Compound	Peak Area	Retention Time
Styrene	0.27	8.22
Benzene	0.26	8.89
3-carene	1.00	11.18
1-hexanol	1.15	11.26
Hexanoic acid	0.12	11.53
Undecane	0.19	12.53
1H-indene	0.16	13.98
Dodecane	0.12	14.13
Tridecane	0.18	15.59
1-propene	0.14	15.90
1,2,4-methanoazulene	0.30	16.75
3-tetradecane	0.68	16.95
Tetradecanal	0.41	17.08
Oxirane	0.87	17.19
1,4-methanoazulene	0.53	17.22
Pentatriacontane	0.45	17.74
Cyclododecane	0.19	18.60
n-nonylcyclohexane	0.22	18.88
1-H-2-benzopyran-1-one	1.18	18.93
Phenol	1.00	19.09
1-hexadecene	0.67	19.32
Hexadecane	0.96	19.40
Cyclotetradecane	0.26	19.68
Heptadecane	0.44	20.53
Pentadecane	0.28	20.60
Octadec-9Z-enol	0.15	21.31

The time study experiments analyzing the headspace of *Stachybotrys chartarum* was run for three consecutive weeks. Twenty-seven known compounds were identified from the headspace of *Stachybotrys chartarum* samples using CW/DVB SPME fibers and an exposure time of 18 hours.

**Table 4.** The Effect of Time on MVOC composition of *Stachybotrys chartarum*

Week One	Week Two	Week Three
1-H-2-Benzopyran-1-one	1,4,7,10,13,16,19-Hepta-2-cycloheptacosanone	1,2,4-methenoazulene
	1H-2-Benzopyran-1-one	1,4-methanoazulene
	1-hexanol	1H-2-Benzopyran-1-one
	1-nonadecene	1-hexadecene
	Benzene	1-hexanol
	Cyclododecane	1-Propene
	Cyclooctane	3-carene
	Heptadecane	3-tetradecene
	Hexadecane	Benzene
	n-butyl laurate	Cyclododecane
	Oleyl alcohol	Cyclotetradecane
	Oxirane	Dodecane
	Phenol	Heptadecane
		Hexadecane
		Hexanoic acid
		Napthalene
		n-Nonylcyclohexane
		Octadec-9Z-enol
		Oxirane
		Pentadecane
		Pentatriacontane
		Phenol
		Styrene
		Tetradecanal
		Tridecane
		Undecane

The field test data show that the canines successfully alert to the *in vitro* toxic mold samples, with a slightly lower accuracy than previous tests have shown canines alerting to the mold-inoculated pieces of drywall that were used for their training. From the canine field tests, nine of the twelve positive controls grown in the laboratory were alerted to by the four new canines tested. Canine # 1 alerted to 66.6% of the positive controls, missing one. Canine # 2 alerted to 100% of the positive controls. Canine # 3 alerted to 33.3% of the positive controls, missing two. Canine # 4 alerted to 100% of the positive controls. Tables 5 and 6 show accuracy statistics in terms of each positive control and each canine tested.

**Table 5.** Results from canine field tests on May 5, 2005 in terms of *in vitro* toxic mold sample positive controls. Numbers in the Alert and No Alert columns denote which canine elicited the respective response to each mold inoculated drywall training aid positive control.

Positive controls	Alert	No Alert	% detected
<i>Stachybotrys chartarum</i> on CMA	6,7,8	5	75%
<i>Aspergillus versicolor</i> on PDA	5,6,8	7	75%
<i>Penicillium chrysogenum</i> on PDA	5,6,8	7	75%

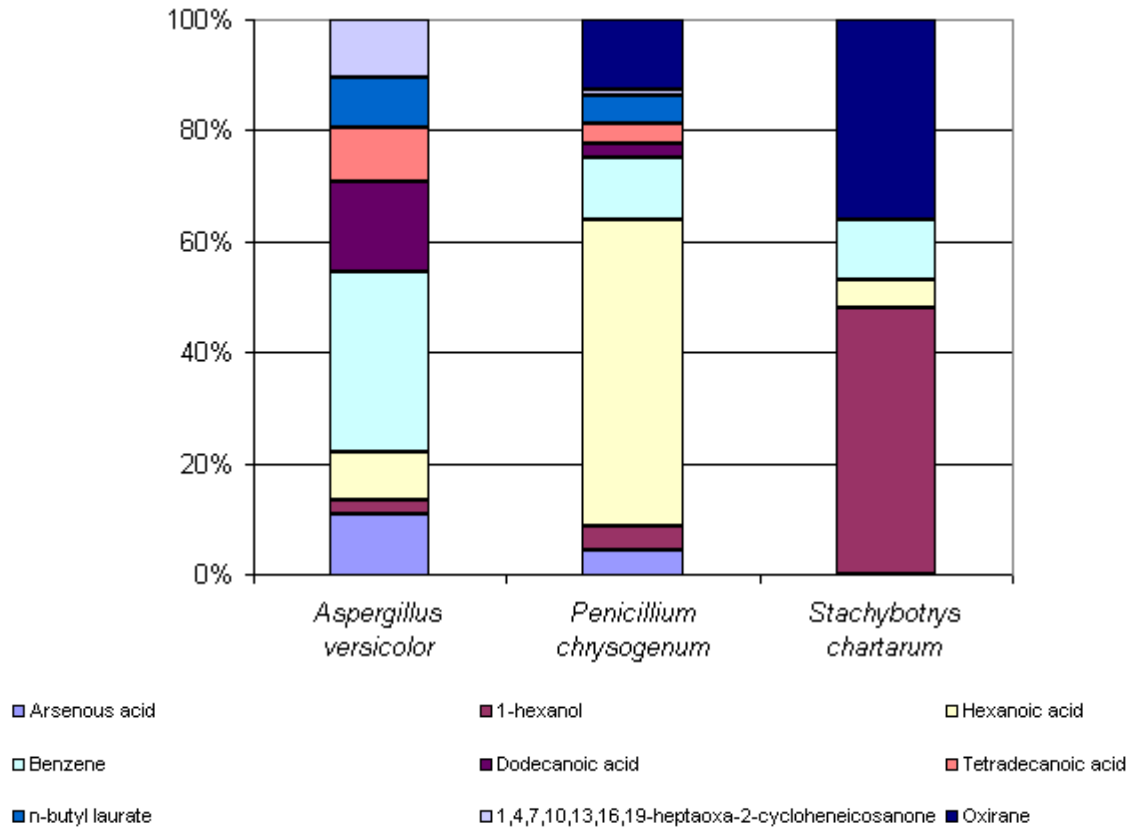
**Table 6.** Results from canine field tests on May 5, 2005 in terms of individual canines' performances. Numbers in the positive control column denote which positive controls were detected by each canine; numbers in the false positives and misses columns denote the number of false positives and misses for each canine as well as the hide numbers that elicited each response.

Canine	Positive controls detected	Percentage of positive controls detected	False positives	Misses
5	2,3	66.7%	0	1: 1
6	1,2,3	100%	0	0
7	1	33.3%	0	2: 2,3
8	1,2,3	100%	0	0

#### 4. Conclusions

These experiments show that canines can effectively detect active odor components of various indoor mold species. By using SPME-GC/MS analysis, detection of the MVOCs emitted from three toxic indoor molds, *Penicillium chrysogenum*, *Aspergillus versicolor*, and *Stachybotrys chartarum* was established. The distinctiveness of volatile secondary metabolite production of these species could be estimated by this technique as well. This mold detection research is important, as canine trainers can use the compounds isolated found in this study to ensure the canines are being trained on the correct odors being emitted from these toxic molds.

Some microbial volatile organic compounds were common amongst the three species. 1-hexanol, hexanoic acid, and benzene were extracted from the headspaces of all three species analyzed. Arsenous acid, dodecanoic acid, tetradecanoic acid, n-butyl laurate and 1,4,7,10,13,16,19-hepta-2-cycloheptacosanone were extracted from the headspaces of both *Aspergillus versicolor* and *Penicillium chrysogenum*. Oxirane was extracted from the headspaces of both *Penicillium chrysogenum* and *Stachybotrys chartarum*. Even amongst these commonly seen compounds, there is a great difference in the percent peak areas detected between these three species. Knowledge of the similarities and differences of the odor signatures of various toxic indoor mold species is very significant and useful in the improvement of existing canine training aids. Figure 6 below illustrates the differences in the percent peak areas of these common compounds.



**Figure 6.** Percent peak areas of common compounds found in headspaces of *Aspergillus versicolor*, *Penicillium chrysogenum*, and *Stachybotrys chartarum*, CW/DVB, 18 hour exposures

The detection of changes in MVOCs composition from the headspace of a toxic mold species over time is a significant finding. If the odor signatures of the molds change significantly over time, training methods may need to be modified to account for changes in composition. The results from the experiments of the effect of time on the *Stachybotrys chartarum* MVOC composition are conclusive. One compound, 1-H-2-Benzopyran-1-one, remained in the headspace for the three successive weeks. Seven compounds remained in the headspace for the second and third weeks of the experiments: 1-H-2-Benzopyran-1-one, 1-hexanol, benzene, cyclododecane, heptadecane, oxirane, and phenol. With the exception of 1-H-2-Benzopyran-1-one, all other common compounds observed in the second and third weeks of headspace analysis increased in abundance from the second to the third week of growth. The effect of time on *Aspergillus versicolor* and *Penicillium chrysogenum* MVOC compositions are less conclusive, as analyses did not yield any identifiable compounds from the headspace for both species at some point in the three weeks.



**Figure 7.** Canine # 4 alerting to a sample at the Florida Canine Academy.

This study demonstrates that canines can detect laboratory cultured toxic indoor molds at a 75% accuracy. This is significant, as these canines are not trained on molds grown *in vitro* on agar media, but rather pieces of mold-inoculated drywall. Previous studies have concluded that canines trained at the Florida Canine Academy can detect mold-inoculated drywall training aids at a 94% accuracy [13]. Although they did not detect molds grown *in vitro* on agar media with the same percent accuracy as the results of mold-inoculated drywall training aids studies have shown, they detected the majority of the laboratory cultured toxic mold positive controls in the course despite any differences in metabolites produced by the molds digesting the alternate substrate with which they were trained. Findings of this research are being used to validate the canine training methods used for their detection and may be used to improve the detection of toxic indoor molds.

## References

1. Nielsen, Kristian. "Mycotoxin production by indoor molds", *Fungal Genetics and Biology* **2003**, vol. 39, pp. 103-117.
2. Institute of Medicine (IOM). "Damp indoor spaces and health". **2004**, National Academic Press, Washington, DC.
3. Portnoy, J.M., Barnes, C.S., Kennedy, K. "Sampling of indoor fungi", *Journal of Allergy and Clinical Immunology* **2004**, vol. 113, pp. 189-198.
4. Islam, Z., Harkema, J.R., Pestka, J.J. "Satratoxin G from the black mold *Stachybotrys chartarum* evokes olfactory sensory neuron loss and inflammation in the murine nose and brain", *Environmental Health Perspectives* **2006**, vol 114, pp 1099-1107.

5. Wilkins, K., Abbot, S.P., “Volatile metabolite patterns for the identification of common indoor mold species”, *23<sup>rd</sup> International Symposium on Capillary Chromatography* **2000**, Riva del Garda - Italy.
6. Hussein, H., Brasel, J.M., “Toxicity, metabolism, and impact of mycotoxins on humans and animals”, *Toxicology* **2001**, vol. *167*, pp. 101-134.
7. Kuske, M., Romain, A.C., Nicolas, J. “Microbial volatile organic compounds as indicators of fungi: Can an electronic nose detect fungi in indoor environments?”, *Buildings and Environment* **2005**, vol *40*, pp 824-831.
8. Nilsson, A., Kihlstrom, E., Lagesson, V., Wessen, B., Szponar, B., Larsson, L., Tagesson, C. “Microorganisms and volatile organic compounds in airborne dust from damp residences”, *Indoor Air* **2004**, vol. *14*, pp. 74-82.
9. Fiedler, K., Schutz, E., Geh, S. “Detection of microbial volatile organic compounds (MVOCs) produced by moulds on various materials“, *International Journal of Hygiene and Environmental Health*, **2001**, vol *204* pp 111-121.
10. Kreja, L., Seidel, H. “On the cytotoxicity of some microbial volatile organic compounds as studied in the human lung cell line A549”, *Chemosphere* **2002**, vol. *49*, pp. 105-110.
11. Lorenzo, N., Wan, T., Harper, R.J., Hsu, Y.-L., Chow, M., Rose, S., Furton, K.G. “Laboratory and field experiments used to identify *Canis lupus var. familiaris* active odor signature chemicals from drugs, explosives and humans”, *Analytical and Bioanalytical Chemistry* **2003**, vol. *376*, pp 1212-1224.
12. Elke, K., Begerow, J., Oppermann, H., Kramer, U., Jermann, E., Dunemann, L. “Determination of selected microbial volatile organic compounds by diffusive sampling and dual-column capillary GC-FID - a new feasible approach for the detection of an exposure to indoor mould fungi?”, *Journal of Environmental Monitoring* **1999**, vol. *1*, pp. 445-452.
13. Griffith, R. “Locating Toxic Molds Using Solid Phase Microextraction/ Gas Chromatography/ Mass Spectrometry and Canine Detection of Microbial Volatile Organic Compounds”, Master of Science thesis, Forensic Science, Florida International University **2005**.