

4-1-1990

Answer the Fish: BFA Spring Exhibition 1990

The Art Museum at Florida International University Frost Art Museum
The Patricia and Phillip Frost Art Museum

Follow this and additional works at: <https://digitalcommons.fiu.edu/frostcatalogs>

Recommended Citation

Frost Art Museum, The Art Museum at Florida International University, "Answer the Fish: BFA Spring Exhibition 1990 " (1990). *Frost Art Museum Catalogs*. 15.
<https://digitalcommons.fiu.edu/frostcatalogs/15>

This work is brought to you for free and open access by the Frost Art Museum at FIU Digital Commons. It has been accepted for inclusion in Frost Art Museum Catalogs by an authorized administrator of FIU Digital Commons. For more information, please contact dcc@fiu.edu.

A high-contrast, black and white halftone image of a butterfly, centered on a dark background. The butterfly's wings are spread, and the image is composed of a dense grid of small dots. In the center of the butterfly's body, the words "ANSWER THE FISH" are printed in a bold, serif font. The text is arranged in three lines: "ANSWER" on the top line, "THE" on the middle line, and "FISH" on the bottom line. The overall effect is a stark, graphic representation of the butterfly, with the text serving as a central focal point.

ANSWER
THE
FISH

The BFA Exhibition is the culmination of an art student's undergraduate program. It represents the portfolio of his or her finest work and is a requirement for the attainment of a Bachelor of Fine Arts degree. It is also an opportunity for the student/artist to gain practical experience within the exhibition environment. Not only are they responsible for displaying their own work, but also for the design of the entire exhibit. Lastly, the BFA Exhibition is a way of sharing, with the FIU community, as well as the general public, the fruits of our Visual Arts Department's program.

VISUAL ARTS FACULTY

William Maguire, Chairman

James Couper, BFA Thesis and Portfolio

Ralph Buckley

William Burke

Carol Damian

Edward Del Valle

Mirta Del Valle

Richard Duncan

Ellen Jacobs

Juan Martinez

Dahlia Morgan

Constantino Torres

Barbara Watts

Sandra Winters



TOP ROW

Humberto Hernandez

Beto Alvarez

Marlene Rogers

John Bailly

Merily Russin

SECOND ROW

Armando Garcia

Rosario Torres

Rey Armenteros

THIRD ROW

Kathy Pardington

Julie Orsini

David Schaeffer

BETO ALVAREZ

BIRTHPLACE & DATE:

Armenia, Colombia, March 16, 1963

EDUCATION:

1990 BFA Florida International University,
Miami, FL

Art Institute of Southern California,
Laguna Beach, CA

Florida Memorial College, Miami, FL

PROFESSIONAL EXPERIENCE:

Sculptor's Assistant, David Shankman
Sculpture Studio Assistant,

Florida International University

Foundry Assistant, Montoya Art Studios

RECENT EXHIBITIONS:

1990 "Annual Student Exhibition", The Art
Museum at Florida International
University, Miami,

Judge: Cesar Trasobares

"Art in Motion", Club Nu, Miami

1989 "Annual Student Exhibition",

The Art Museum at Florida International
University, Miami, Judge: Alan DuBois

HONORS/AWARDS:

1989 "Scholarship Award", Spring Review,
Florida International University

CHECKLIST OF WORKS:***Concave/Convex, 1990***

Mixed media, 30" x 29" x 10"

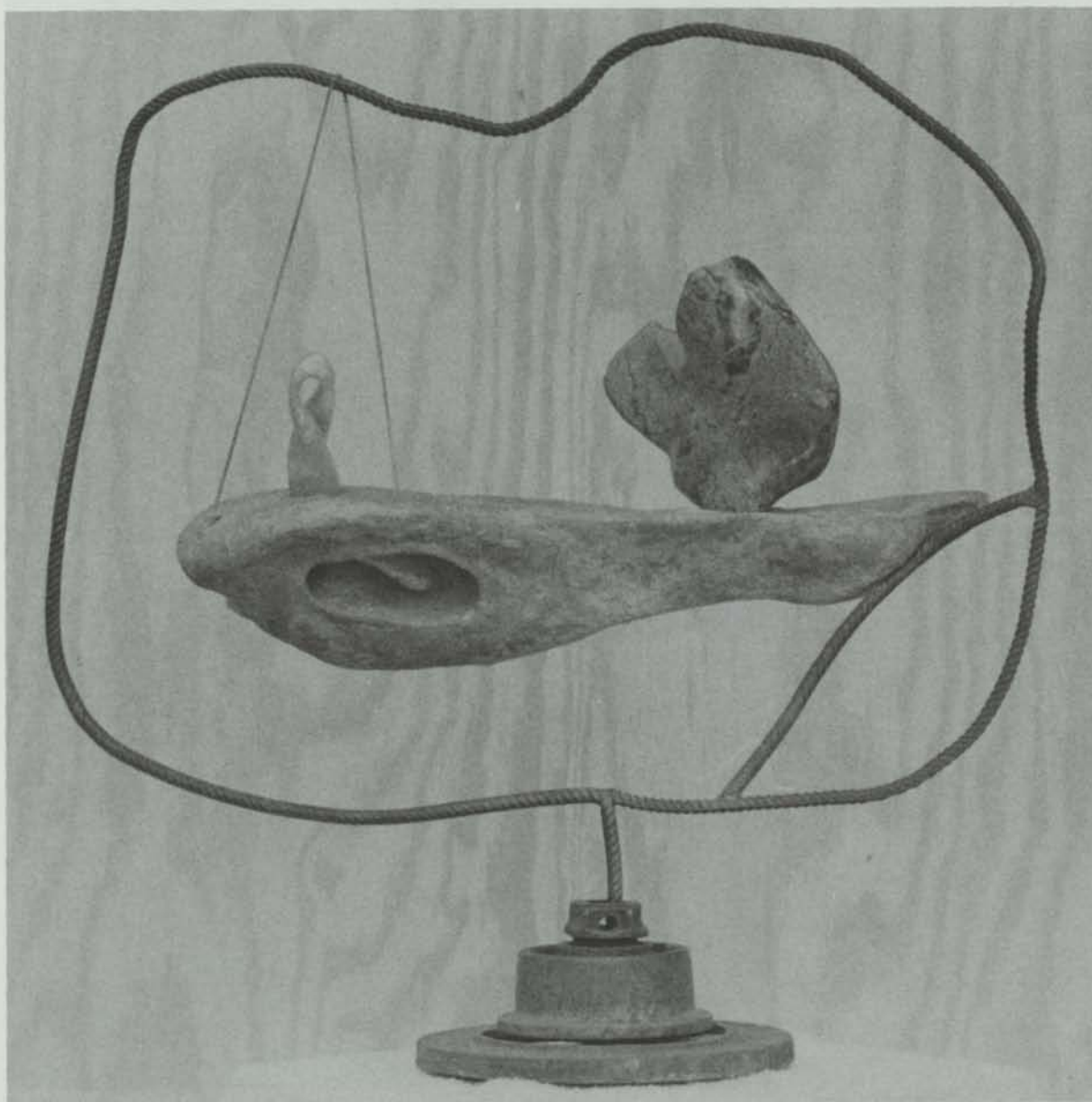
Charred Truce, 1990

Iron, steel, and alabaster, 17" x 29" x 6"

Hard to Get, 1990

Plywood and alabasters, 42" x 31" x 12"

Concave/Convex, 1990, Mixed media



STATEMENT:

"Art is a translation of perception."

REY ARMENTEROS

BIRTHPLACE & DATE:

Miami Beach, Florida, October 14, 1968

EDUCATION:

1990 BFA Florida International University,
Miami, FL
AA Miami-Dade Community College,
Miami, FL

HONORS/AWARDS:

National Dean's List

CHECKLIST OF WORKS:

SERIES: The White Light and I

From the series: The White Light and I



STATEMENT:

"Thank You, Soulmate"

JOHN BAILLY

BIRTHPLACE & DATE:

London, England, August 21, 1968

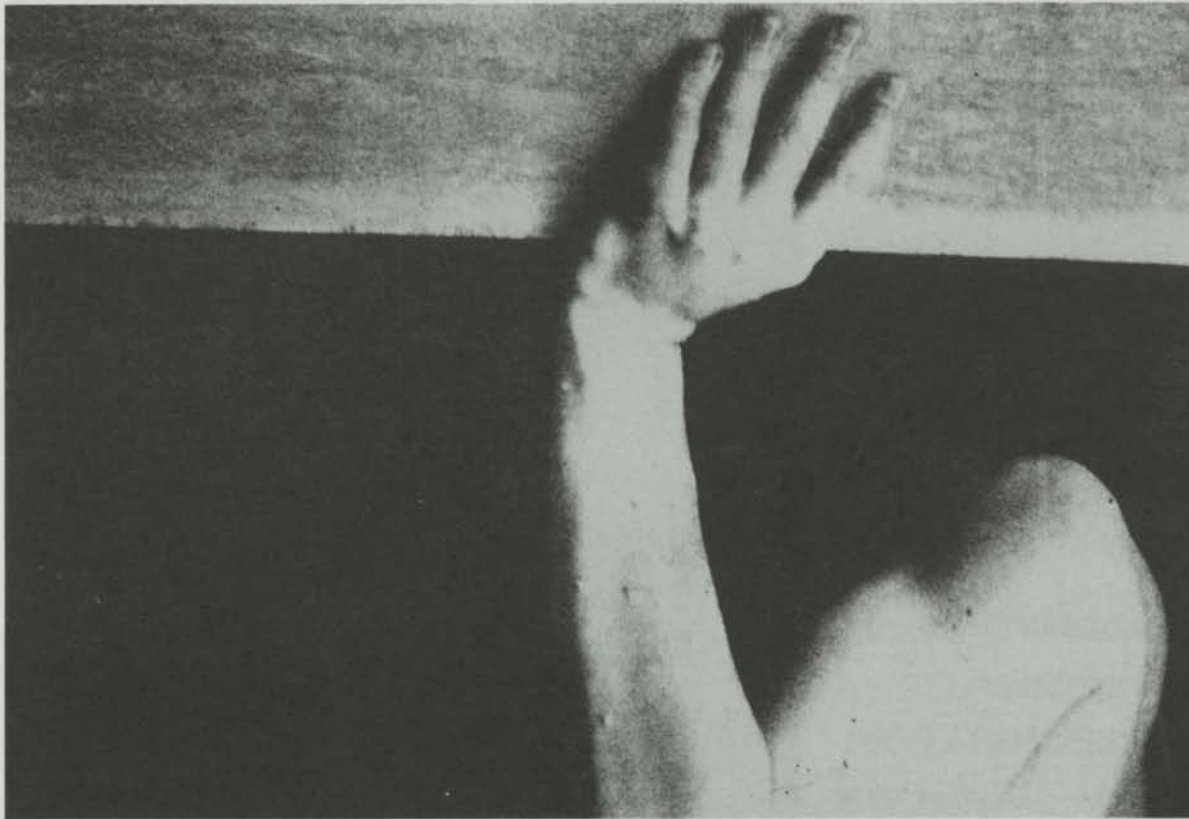
EDUCATION:

1990 BFA Florida International University,
Miami, FL

RECENT EXHIBITIONS:

"I Shot the Mona Lisa,
and Now I'm Serving Life"
Various Group Shows, Miami and Chicago

Pierre



STATEMENT:

"I hope everybody is happy, with birds and trees, bananas and stuff. Hurricanes come flying in under my Persian rug. I have nothing to say. Where is Dave's statement?"

ARMANDO E. GARCIA

BIRTHPLACE & DATE:

Havana, Cuba, January, 15, 1964

EDUCATION:

1990 BFA Florida International University,
Miami, FL
AA Miami-Dade Community College,
Miami, FL

RECENT EXHIBITIONS:

1989 "Annual Student Exhibition", The Art
Museum at Florida International
University, Miami, Judge: Alan DuBois
1987 "Annual Student Show", Miami-Dade
Community College, Miami

CHECKLIST OF WORKS:

Go Both Ways, 1990

Monotype, 27" x 39"

Hip at 85, 1990

Acrylic on canvas, 80" x 45"

i, Refuse, 1990

Mixed media, 39" x 27"

Indiscreet, 1990

Mixed media, 27" x 39"

Living in the 90's

Headed for the Wild, Wild Death, 1990

Acrylic on canvas, 60" x 84"

To be Revealed at a Future Date, 1990

Monotype, 39" x 27"

To be Revealed at a Future Date, 1990, Monotype



HUMBERTO HERNANDEZ

BIRTHPLACE & DATE:

Miami, Florida, January, 20, 1963

EDUCATION:

1990 BFA Florida International University,
Miami, FL

1988 AA Miami-Dade Community College,
Miami, FL

1981-83 The Fashion Institute of
Technology, New York, NY

PROFESSIONAL EXPERIENCE:

Retail Sales Management, Merchandising,
and Designing ready-to-wear
collections.

RECENT EXHIBITIONS:

1990 "Annual Student Exhibition", The Art
Museum at Florida International
University, Miami,
Judge: Cesar Trasobares

HONORS/AWARDS:

1990 Pitman Photo Award, "Annual Student
Exhibition", The Art Museum at Florida
International University

CHECKLIST OF WORKS:

Girl with Cigarette at Regine's, 1990

Photograph, 16" x 20"

Margie with Boy at the Cameo, 1990

Photograph, 16" x 20"

Two Guys with Pearls at Truth, 1990

Photograph, 16" x 20"

Carlos and Passion, 1989

Photograph, 8" x 10"

Gina and Alex (Happy Holidays), 1989

Photograph, 16" x 16"

Girl with Box at T.G.I. Fridays, 1989

Photograph, 16" x 20"

Legs in High Heels, 1989

Photograph, 16" x 20"

Margie and John, 1989

Photograph, 16" x 16"

Screaming Fifi in a Blur, 1989

Photograph, 16" x 20"

Tony and Evelyn, 1989

Photograph, 16" x 20"

Tony - Evelyn - Mano, 1989

Photograph, 16" x 20"

Margie and John, 1989, Photograph



STATEMENT:

"Photography, for me, is like looking through a window at a given moment. The great thing is that you can carry these windows with you and let other people see inside."

JULIE FRANCES ORSINI

BIRTHPLACE & DATE:

Brooklyn, New York, July 31, 1964

EDUCATION:

1990 BFA Florida International University,
Miami, FL

1984 AA Miami-Dade Community College,
Miami, FL

PROFESSIONAL EXPERIENCE:

1983 - Present Freelance Artist

1988 - 89 Mechanical Artist: Ad Team

1987 - 88 Assistant Production Manager:
Sir Speedy

1986 Display Artist, Walden's Book Store

CHECKLIST OF WORKS:

Adrift, 1990

Oil on canvas, 36" x 50"

Bhabi, 1990

Graphite, 31" x 42"

Fragments, 1990

Oil and acrylic, 18" x 18"

Herodias, 1990

Oil on canvas, 48" x 60"

Praises, 1990

Oil on canvas, 46" x 49"

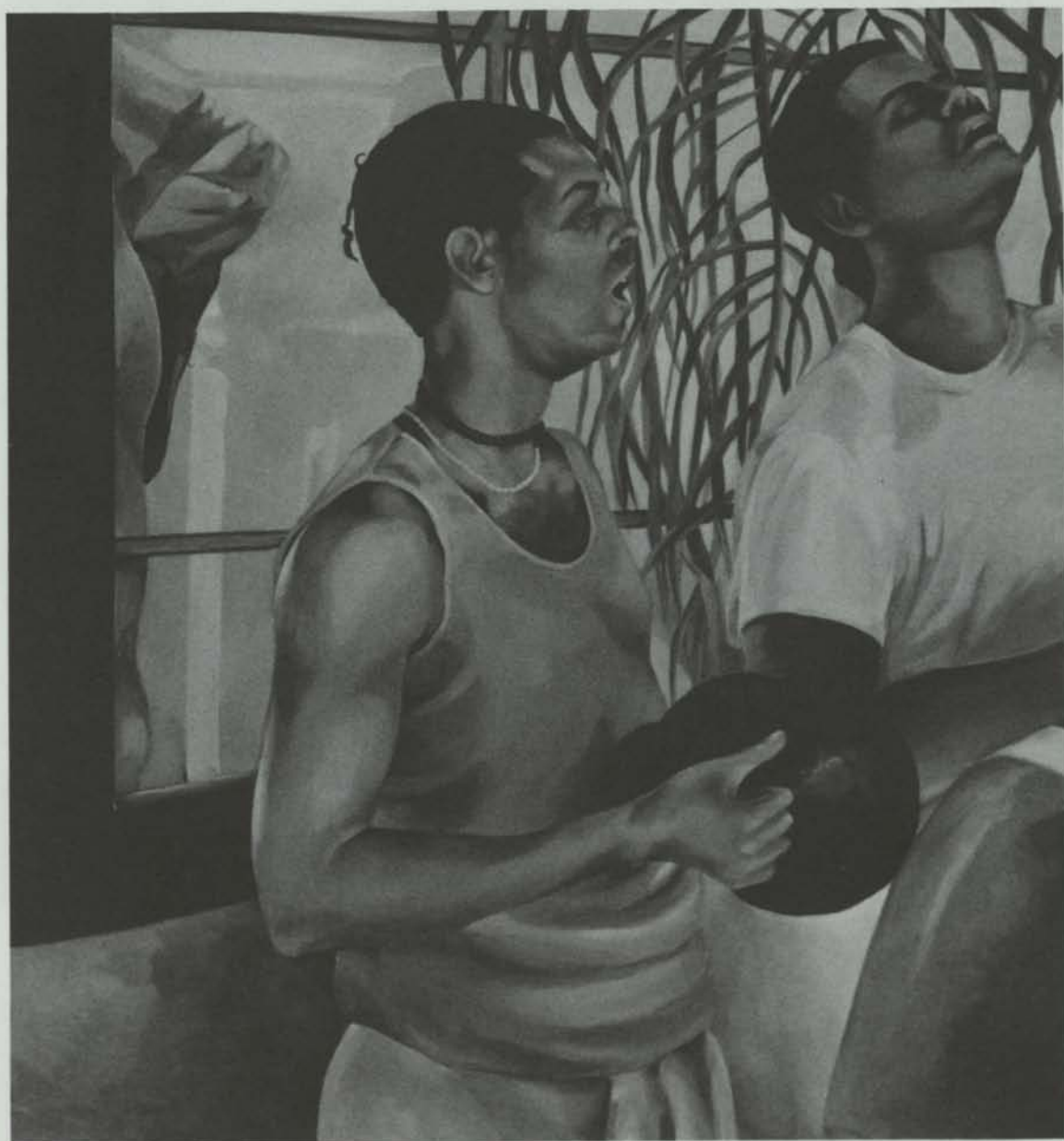
Shashi, 1990

Oil on canvas, 46" x 54"

Through the Looking Glass, 1990

Graphite, 31" x 42"

Praises, 1990, Oil on canvas



KATHLEEN W. PARDINGTON

BIRTHPLACE:

Miami, Florida

EDUCATION:

1990 BFA Florida International University,
Miami, FL
AA Miami-Dade Community College,
Miami, FL

RECENT EXHIBITIONS:

1988 "Annual Student Exhibition",
The Art Museum at Florida International
University, Miami
1984 Florida Power & Light Atrium Art Expo

HONORS/AWARDS:

1988 Honorable Mention, "Annual Student
Exhibition", The Art Museum at Florida
International University
1984 Third Place Darwin Award, Florida
Power & Light Atrium Art Expo

CHECKLIST OF WORKS:***Untitled, 1990***

Oil/plaster on canvas, 48" x 60"

Untitled, 1990

Oil/plaster on canvas, 36" x 48"

Drifter, 1989

Oil on canvas, 20" x 30"

Drifter II, 1989

Oil on canvas, 22" x 30"

Drifter II, 1989, Oil on canvas



STATEMENT:

"Art follows life
as the shadow
follows the
body. Art
points to the
meridian and
measures the
passing hour."

MARLENE D. ROGERS

BIRTHPLACE & DATE:

Miami, Florida, May 4

EDUCATION:

1990 BFA Florida International University,
Miami, FL

1986 AA Miami-Dade Community College,
Miami, FL

AS Miami-Dade Community College,
Miami, FL

RECENT EXHIBITIONS:

1990 "Annual Student Exhibition",
The Art Museum at Florida International
University, Miami,
Judge: Cesar Trasobares

HONORS/AWARDS:

1990 "Scholarship Award", Spring Review,
Florida International University
1990-89 National Dean's List

CHECKLIST OF WORKS:

A Priori, 1990

Mixed media, 30" x 60"

Avoiding the Axioms, 1990

Mixed media, 30" x 60"

Concrete Occupants, 1990

Mixed media, 84" x 60"

Ex Nihilo Nihil, 1990

Mixed media, 84" x 60"

From the Spatio-Temporal Regions, 1990

Mixed media, Triptych, 72" x 48"

If All Known A's are B . . . , 1990

Mixed media, 24" x 48"

The Infinite Mind

of a Featherless Biped, 1990

Mixed media, 24" x 48"

Tabula Rasa, 1990

Mixed media, 30" x 60"

A Priori, 1990, Mixed media



DAVID SCHAEFFER

BIRTHPLACE & DATE:

Detroit, Michigan, May 6, 1967

EDUCATION:

1990 BFA Florida International University,
Miami, FL

1987 AA Miami-Dade Community College,
Miami, FL

PROFESSIONAL EXPERIENCE:

Artist/Human Being

RECENT EXHIBITIONS:

1990 "Annual Student Exhibition",
The Art Museum at Florida International
University, Miami,

Judge: Cesar Trasobares

Multiple showings, Art Asylum, Cameo
Theater, Miami Beach

1989 "Annual Student Exhibition", The Art
Museum at Florida International
University, Miami, Judge: Alan DuBois

Two times Art in Motion, Club Nu,
Miami Beach

HONORS/AWARDS:

1990 Top Award, Spring Scholarship
Review, Florida International University
1989 Materials money, Spring Scholarship
Review, Florida International University

CHECKLIST OF WORKS:

Impressionist T.V., 1990

T.V. with videotape, 47 x 55 x 37 cm.

Religion>industrialization: Television

Opiate of the masses; MCMXC , 1990

Multi/mixed media installation with
videotape, 153 x 183 x 197 cm.

Relics>Significance . . . Question, 1990

Glass, steel, brick with light,
137 x 159 x 67 cm.



STATEMENT:

"Censored"

ROSARIO TORRES

EDUCATION:

1990 BFA Florida International University,
Miami, FL

1987 AA Miami-Dade Community College,
Miami, FL

RECENT EXHIBITIONS:

1989 A.C.C.A. Miami-Expo '89

"Annual Student Exhibition", The Art
Museum at Florida International
University, Miami Judge: Alan DuBois

"37th Anniversary Exhibition", Broward Art
Guild

1988 A.C.C.A. Annual Exhibition

CHECKLIST OF WORKS:

+ or -, 1990

Lithograph, 24" x 18"

Chess Pieces, 1990

Lithograph, 23" x 17 1/2"

The Man and the Fish, 1990

Lithograph, 23" x 17 1/2"

Mecanismo, 1990

Lithograph, 24" x 18"

Mitologia del tiempo, 1990

Lithograph, 22" x 16"

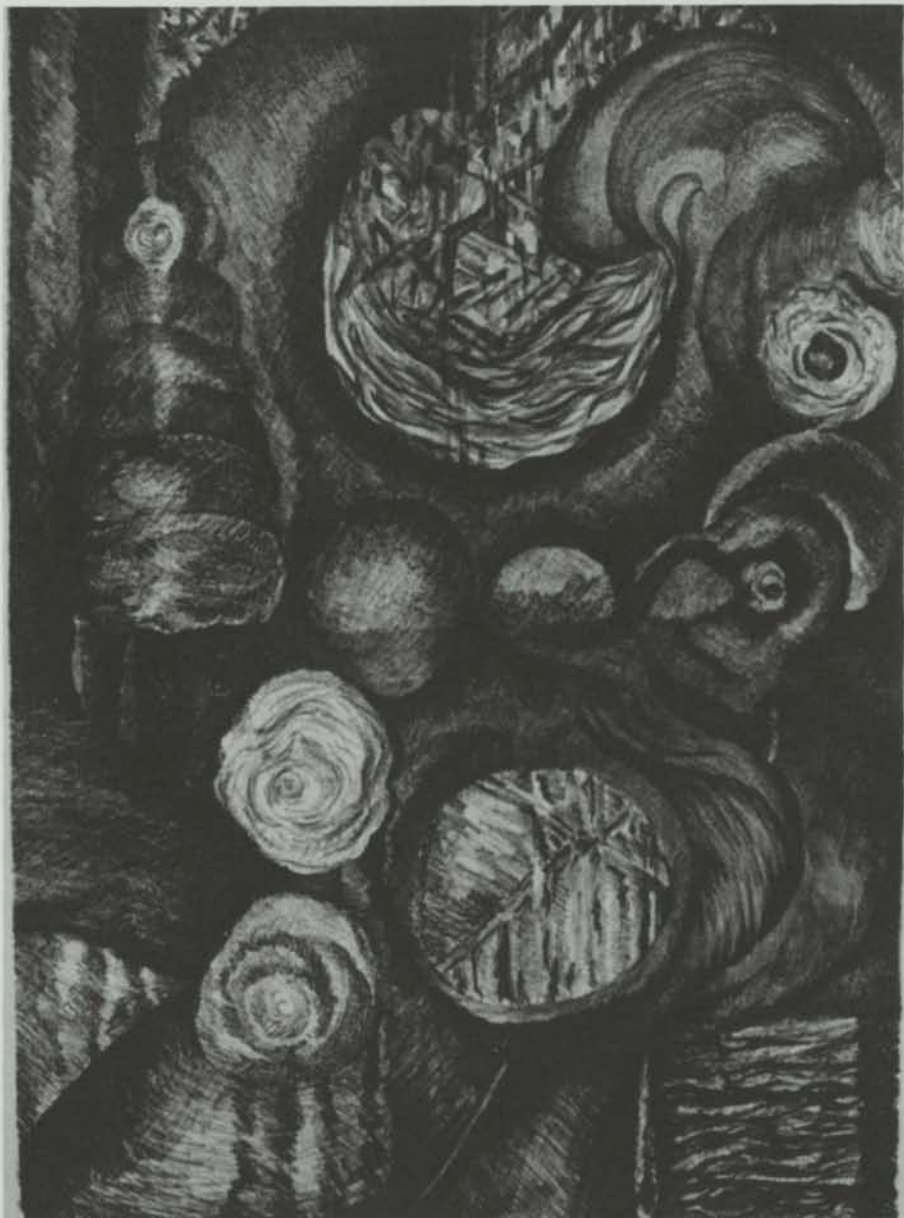
Untitled, 1990

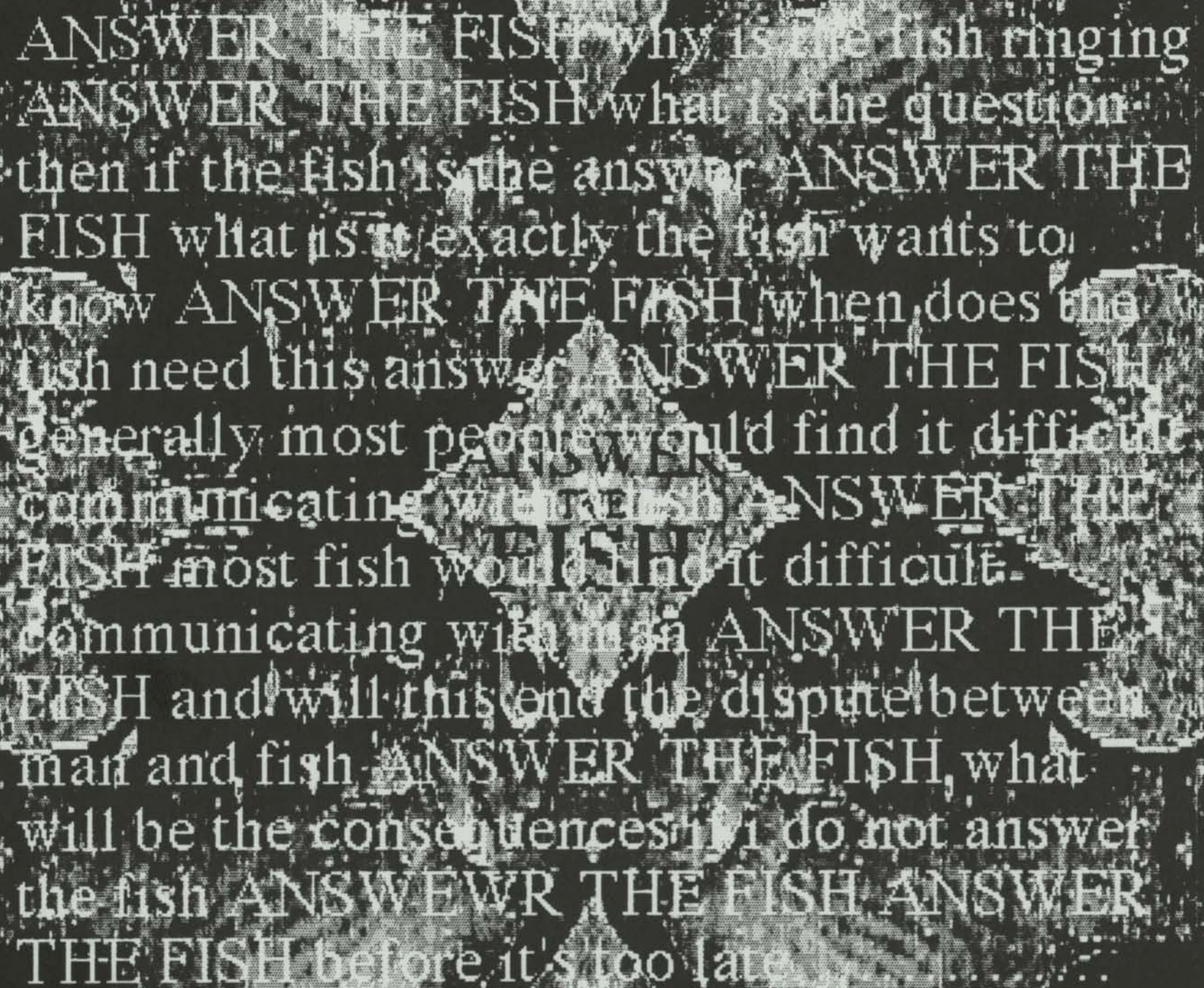
Lithograph, 22" x 16"

What Time By, 1990

Lithograph, 24" x 18"

Mitología del tiempo, 1990, Lithograph





ANSWER THE FISH why is the fish ringing
ANSWER THE FISH what is the question
then if the fish is the answer ANSWER THE
FISH what is it exactly the fish wants to
know ANSWER THE FISH when does the
fish need this answer ANSWER THE FISH
generally most people would find it difficult
communicating with a fish ANSWER THE
FISH most fish would find it difficult
communicating with a man ANSWER THE
FISH and will this end the dispute between
man and fish ANSWER THE FISH, what
will be the consequences if i do not answer
the fish ANSWER THE FISH ANSWER
THE FISH before it's too late