

6-2-2021

Virtual DSS: Sharing and Archiving Your Research Data (Part 2 of Managing and Archiving Your Research Data)

Jill Krefft
Florida International University

Follow this and additional works at: <https://digitalcommons.fiu.edu/dss-resources>

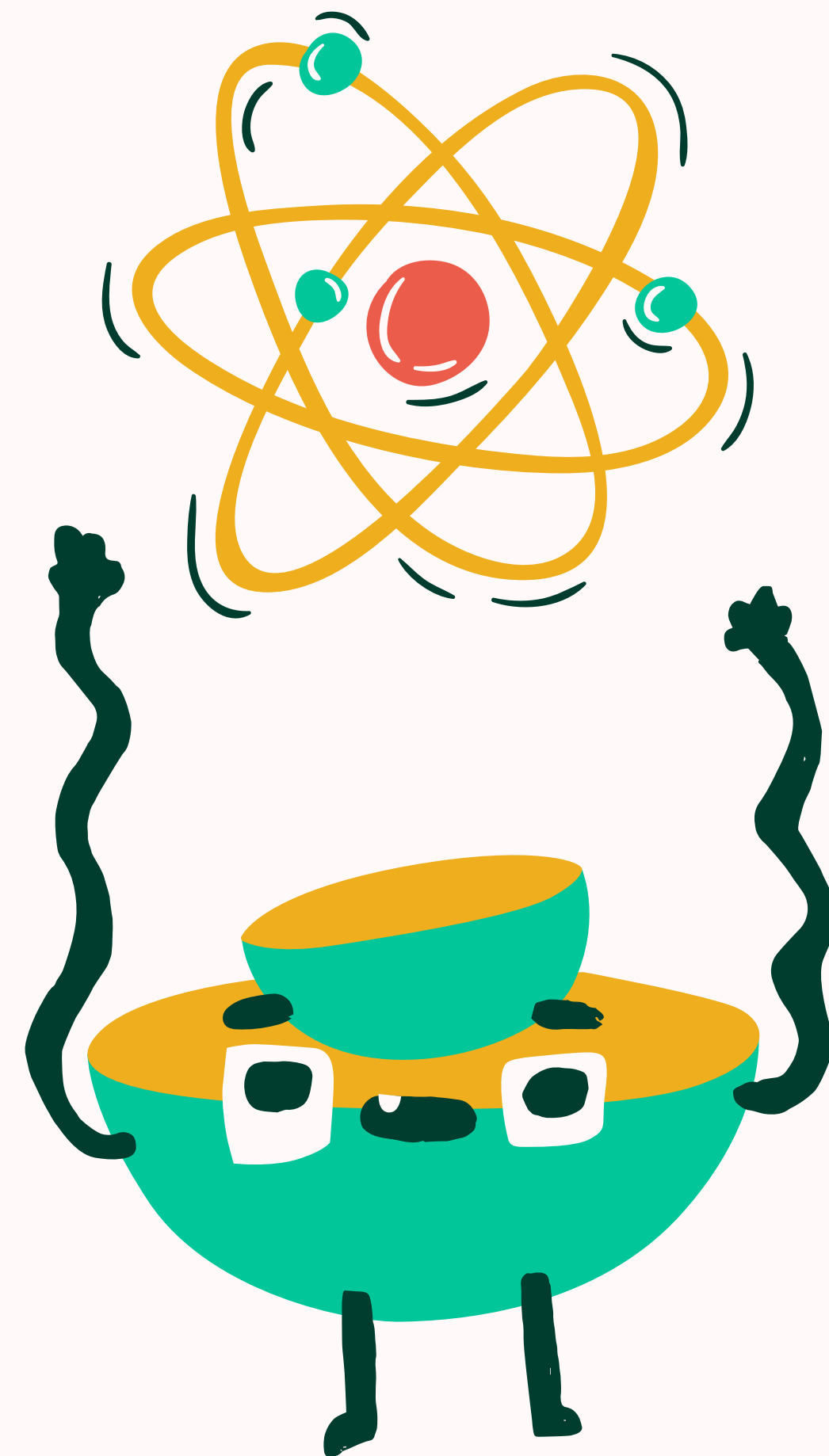
Recommended Citation

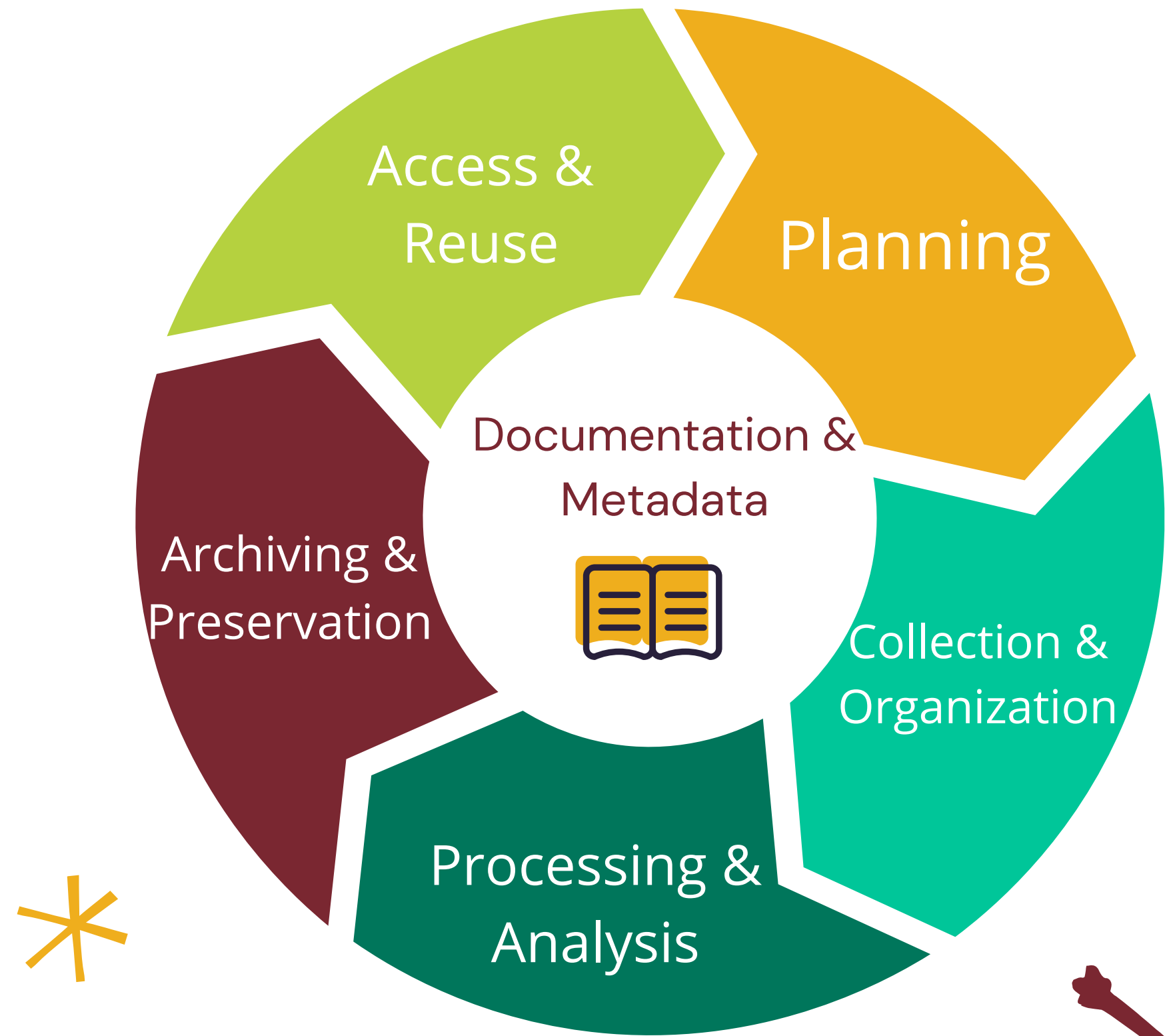
Krefft, Jill, "Virtual DSS: Sharing and Archiving Your Research Data (Part 2 of Managing and Archiving Your Research Data)" (2021). *Digital Scholar Studio Resources*. 14.
<https://digitalcommons.fiu.edu/dss-resources/14>

This work is brought to you for free and open access by FIU Digital Commons. It has been accepted for inclusion in Digital Scholar Studio Resources by an authorized administrator of FIU Digital Commons. For more information, please contact dcc@fiu.edu.

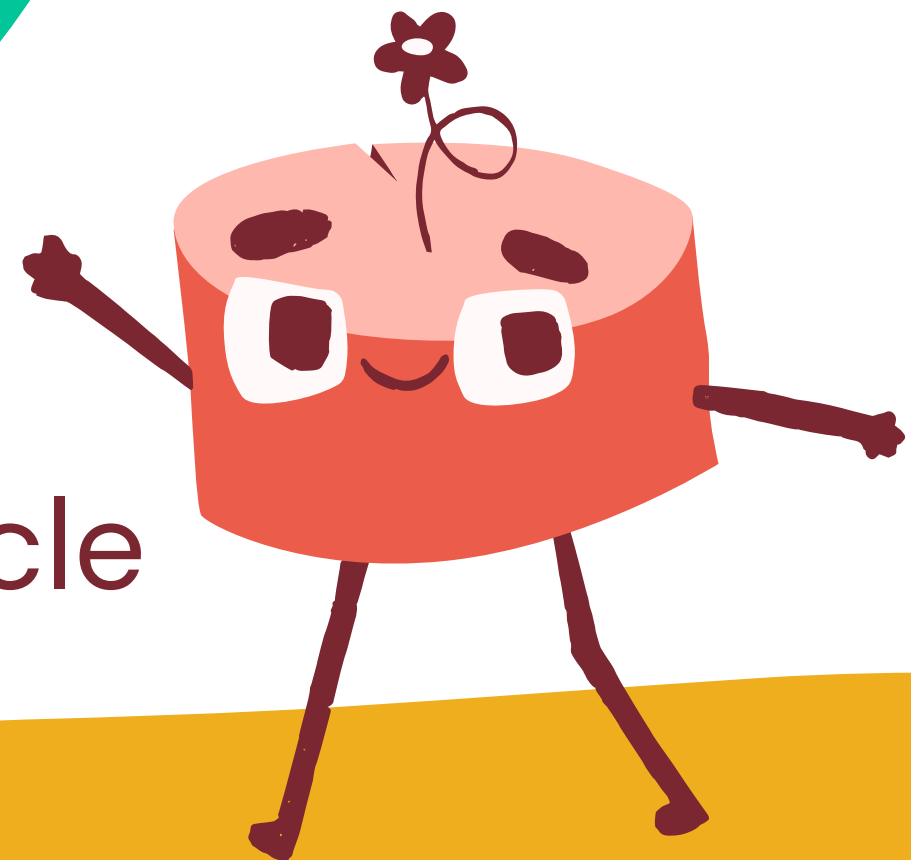
SHARING & ARCHIVING YOUR RESEARCH DATA

Jill Krefft
June 2, 2021





The Research Data Lifecycle



ARCHIVING AND PRESERVATION



Archiving

Archiving is used when a file is to be preserved as-is, often at the end of a project and acts as a static (and usually final) record. [source - DataONE education module]

Preservation

Preservation is the management and maintenance of digital objects (the files, or groups of files, that contain information in digital form) so they can be accessed and used by future users.



Formatting Your Data



The format and software in which research data are created usually depend on how researchers choose to collect and analyze data, often determined by discipline-specific standards and customs.



Ensuring long-term usability of data requires consideration of the most appropriate software and file formats.

Formatting Your Data



Use these basic guidelines when choosing a data format when submitting to a repository:

- Non-proprietary
- Open, documented standards
- Commonly used by your community/discipline
- Standard character encoding (ASCII, UTF-8)
- Unencrypted

Formatting Your Data



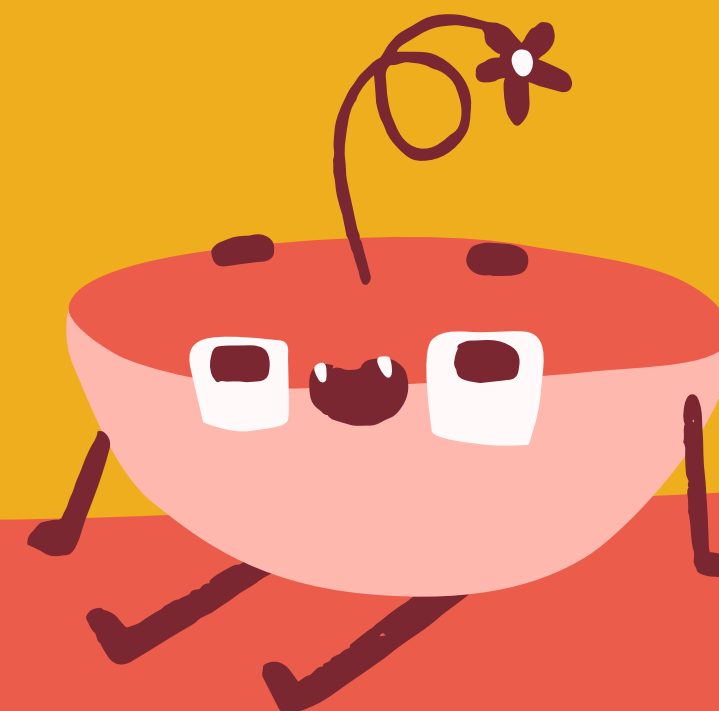
Examples of preferred format choices:

- PDF, not Word
- .TXT, not Word
- CSV, not excel
- MPEG-4, not quicktime
- TIFF or JPEG2000, not GIF or JPG
- XML or RDF, not RDBMS

UK data archive provides clear guidelines for acceptable formats for preservation and archiving.

<https://www.Ukdataservice.Ac.Uk/manage-data/format/recommended-formats.aspx>

ACCESS & REUSE





Why Provide Access to Your Data

Data are becoming valued scholarly products instead of a byproduct of the research process.

Benefits of sharing data:

1. Increase the impact of your work;
2. Lead to new collaborations or projects
3. Enables verification of your published results

Piwovar and vision (2013), data reuse and the open data citation advantage. Peerj 1:e175; [DOI 10.7717/peerj.175](https://doi.org/10.7717/peerj.175)





Funder Requirements

This guide provides information and links to the top FIU federal funding agencies as well as private funders.

<http://libguides.fiu.edu/publicaccess>

SPARC data sharing requirements by federal agencies

<http://researchsharing.sparcopen.org/data>





Publisher Requirements

If you're looking to publish your research, journals will often require you to make your research data accessible. In most cases, they will clearly outline their data policy and recommend certain repositories.

Major publishers that require data sharing include:

- Nature
- Plos
- Springer nature



Access Rights Checklist



1. Do you need to provide access to all the data produced under a grant?
2. Does your data include any private information, medical information, or other information with possible confidentiality concerns?
3. Does your research project have sufficient permissions necessary to disseminate the project data.
 - Did any of the data come from a third party source?
 - If so, did the project obtain permission to disseminate?
 - Are there any restrictions you need to include in your permission statement?

Privacy Rights



For research with human subjects, be sure to adhere to all rules and regulations set forth by FIU's IRB.



Researchers also must adhere to privacy laws regarding personal health information as outlined by HIPPA.

Privacy Rights



Anonymizing data sets

Direct identifiers: names, addresses, telephone numbers, social security numbers, drivers license number etc.

Indirect identifiers: detailed geographic information, organization to which the respondent belongs, detailed occupational titles, places where respondent grew up.

More information about identifiable information can be found here:

[The American Statistical Association, Committee on Privacy and Confidentiality – Methods for Reducing Disclosure Risks When Sharing Data](#)

Where Can You Share Your Data?

- Discipline Specific Repositories
- Federal Agency Repositories
- Publisher Recommended Repositories
- Institutional Repositories



Selecting a Repository



Consider

- What kinds of data do they accept?
- What metadata/documentation does it require?
- Do they require specific file types?
- Do they have a rights policy statement?
- Do they provide long term preservation?
- Data embargo/access

Choose Early

Find a Repository



[Re3data.Org](https://re3data.org)

A global registry of research data repositories that covers research data repositories from different academic disciplines. It presents repositories for the permanent storage and access of data sets to researchers, funding bodies, publishers and scholarly institutions.

[Disciplinary repositories listing](#)

This is a list of oa disciplinary repositories (also called central or subject repositories). Unless otherwise noted, they accept relevant deposits regardless of the author's institutional affiliation.

FIU's Research Data Portal



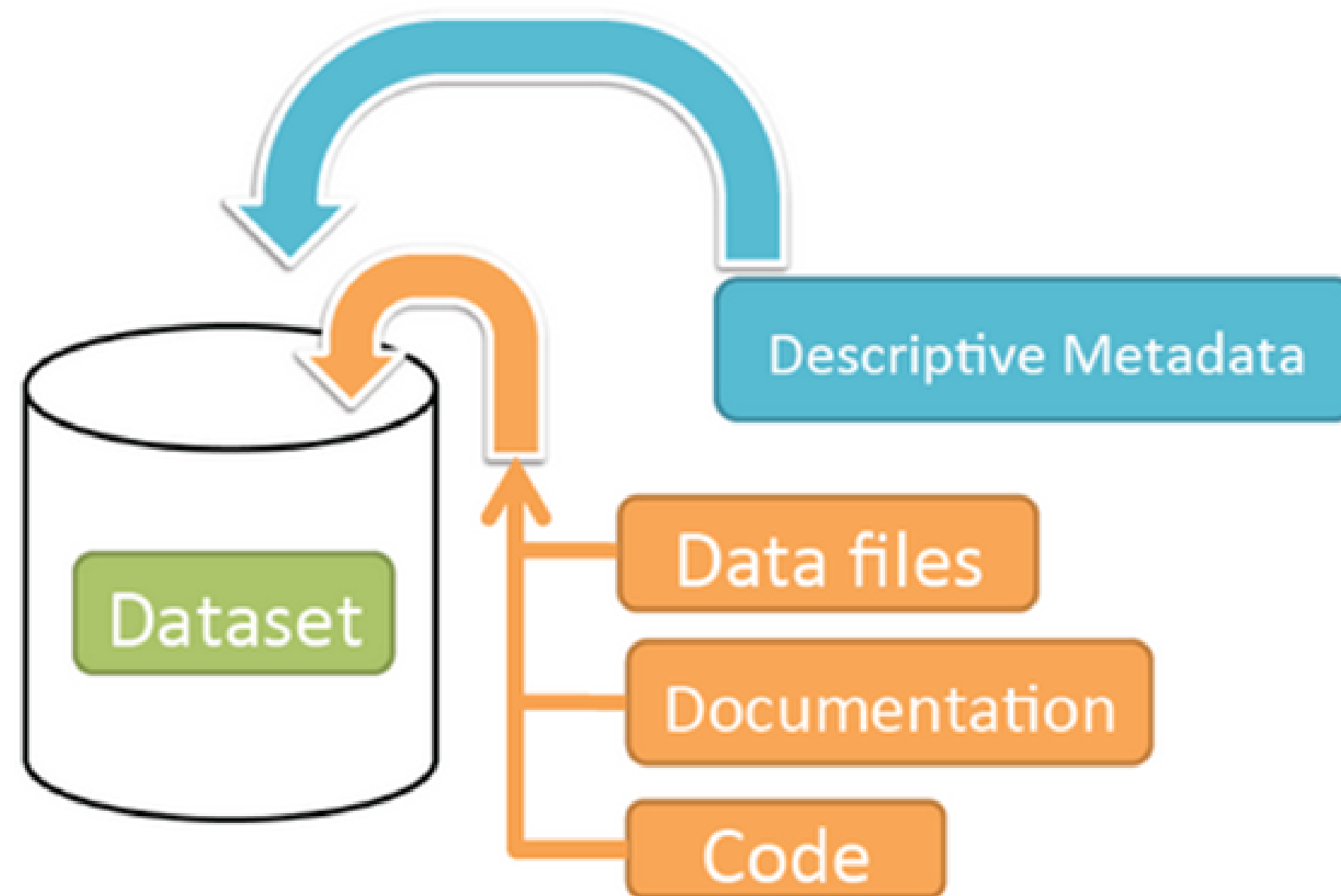
An Inter-disciplinary data archive to support access and reuse of research data produced at FIU



FIU's Research Data Portal



Schematic Diagram of a **Dataset** in Dataverse 4.0



Container for your data, documentation, and code.

What Can I Submit To The Research Data Portal?

- Spreadsheets/Tabular Data
- Surveys
- GIS Data and Imagery
- Code
- Unstructured text



How Much Data Can I Submit?

- 2 GB per Dataset
- Up to 10GB
- Larger than 10GB, Contact rdm@fiu.edu



Let's Explore!

dataverse.fiu.edu

RESEARCH DATA PORTAL Add Data Search User Guide Support Sign Up Log In

FIU Research Data Portal

Metrics 440 Downloads Contact Share

Share and publish your data. Find and cite data across all research fields.

Welcome to FIU's Research Data Portal, a dataverse repository. Add, share, and publish your data to the main FIU dataverse, or choose your project or lab's data collection.

Learn More:

- Go to the Research Data Portal User Guide
- Contact Us

Search this dataverse... Find Advanced Search Add Data

Dataverses (3)

Datasets (21)

Files (139)

Dataverse Category

- Department (1)
- Research Group (1)
- Research Project (1)

Publication Year

- 2021 (14)
- 2020 (9)
- 2019 (1)

Author Name

- Finlayson, Mark A. (6)
- Aldawsari, Mohammed (2)
- Freeseaman, Katelyn (2)
- John, Leiba (2)

1 to 10 of 24 Results Sort

Data and Code "Distinguishing Between Foreground and Background Events in News"

Apr 9, 2021

Aldawsari, Mohammed; Perez, Adrian; Banisakher, Deya; Finlayson, Mark A., 2021, "Data and Code "Distinguishing Between Foreground and Background Events in News"", <https://doi.org/10.34703/gzx1-9v95/NAMTMS>, FIU Research Data Portal, V1

This archive contains the code and data for the paper "Distinguishing Between Foreground and Background Events in News" published in In Proceedings of the 28th Conference on Computational Linguistics (COLING 2020). The root of the main archive contains a readme file that explains...

Haiti Sun

Apr 1, 2021 - dLoc as Data

R. Cheney, Jr, 2021, "Haiti Sun", <https://doi.org/10.34703/gzx1-9v95/XKOSPS>, FIU Research Data Portal, V1

Published weekly from 1950-1959, the Haiti Sun was established by journalist Bernard Diederich as "the Hatian English-language newspaper", with various sections for regional and international news as well as sports, business, and literary submissions. This data set includes pdf f...

**THANK YOU
FOR ATTENDING!**

Jill Krefft
jkrefft@fiu.edu

