

Spring 2015

MIUS News: Maps and Imagery User Services @ FIU Green Library: Volume 6, Issue 1 Spring 2015

Matthew Toro

GIS Center and Maps and Imagery User Services, Florida International University

Follow this and additional works at: https://digitalcommons.fiu.edu/nius_news



Part of the [Geographic Information Sciences Commons](#), [Physical and Environmental Geography Commons](#), and the [Remote Sensing Commons](#)

Recommended Citation

Toro, Matthew, "MIUS News: Maps and Imagery User Services @ FIU Green Library: Volume 6, Issue 1 Spring 2015" (2015). *MIUS News*. 10.

https://digitalcommons.fiu.edu/nius_news/10

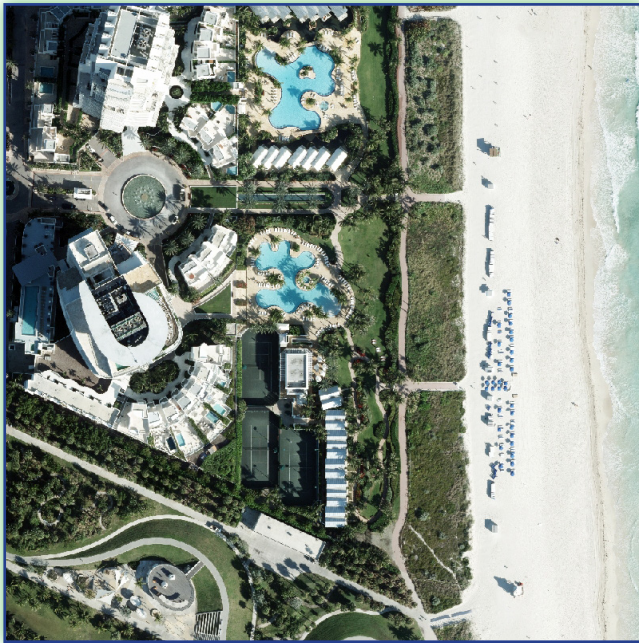
This work is brought to you for free and open access by the FIU Libraries at FIU Digital Commons. It has been accepted for inclusion in MIUS News by an authorized administrator of FIU Digital Commons. For more information, please contact dcc@fiu.edu.

High Resolution Aerial Photography Acquired for Miami-Dade & Broward Counties

The FIU GIS Center recently acquired the complete set of 2013 high-resolution aerial photography for Miami-Dade & Broward Counties.

With spatial resolutions of 0.25-ft and 0.50-ft for the Miami-Dade and Broward datasets, respectively, these images permit identification of rather small geographic features. At this resolution, for example, one can clearly observe objects such as automobiles, trees, and even people!

Be sure to stop by MIUS to use this imagery data for your research and teaching needs!



An aerial view of southern South Beach, including parts of South Point Park

Free Geospatial Workshop Schedule Includes New Offerings!

Have you attended any of the GIS Center's free geospatial workshops yet? Every semester, we offer *at least* five different workshop sessions on both campuses, Modesto Maidique Campus (MMC) and Biscayne Bay Campus (BBC).

We're always expanding the types of workshops we offer too. In addition to the more standard **Intro. to Geospatial Technology & Data** and **Hunting for Geospatial Data Resources**, we've added the following sessions: **Intro. to Projections & Coordinate Reference Systems**; **Intro. to Handheld GPS Data Collection & GIS Integration**; and **Basics of Geometric Overlays**.

Check out the full schedule at our website: <http://gis.fiu.edu/>

GIS Day 2014 Highlights Diversity of Geospatial Research Applications

The GIS Center held its annual GIS Day celebration last year on November 7, bringing the event into closer alignment with other GIS Day celebrations around the globe (which are generally held in November).

The theme for 2014's GIS Day was **Diversity in FIU's Geospatial Data Uses**. Throughout the all-day event, eleven presentations were made by students, faculty, and staff from fields as diverse as Public Administration, Global & Sociocultural Studies, Journalism and Mass Communication, Earth & Environment, Criminal Justice, and Landscape Architecture.

Topics as varied as voting patterns in Miami-Dade County, historical food landscapes in Overtown; crowd-sourcing data for a sea level rise reporting app.; Brazilian census data and the challenges of mapping favelas; hurricane-induced vegetation disturbance mapping; tribal casinos in Florida; spatial smoking patterns at FIU (a non-smoking campus); and designing communities for sea-level rise adaptation; among others sparked the day-long dialogue.

Be sure to attend GIS Day 2015 this upcoming November!



GIS Day attendees enjoy a fun map puzzle game between lecture sessions.

GIS Center To Present at HistoryMiami's 22nd Annual Miami International Map Fair

HistoryMiami, the premiere historical museum for the greater South Florida metropolitan region, is hosting its 22nd annual **Miami International Map Fair** this February 6-8, and the FIU GIS Center will be part of the action!

HISTORYMIAMI

Maps & Imagery User Services (MIUS) Coordinator, Matthew Toro, will be delivering interactive GIS demonstrations throughout the two-day event. He will be explaining to Map Fair participants the process of georeferencing historic hard-copy maps so as to layer such maps among other historic and contemporary geospatial datasets.

Important to note is the type of software to be used during these demonstrations. A free open source software (FOSS) platform, **QGIS**, will be used to demonstrate the process of georeferencing for the audience.

Matthew will also be presenting a fly-through map animation using (the now free!) Google Earth Pro platform using maps specially selected from HistoryMiami's expansive collection of rare and antique maps.

University students receive specially discounted admission fees: **\$10/day**.

Be sure to attend HistoryMiami's 2015 **Miami International Map Fair**, and visit the FIU GIS Center's demonstration area when you're there!

Contact MIUS or the GIS Center

web: <http://gis.fiu.edu/>

Modesto Maidique Campus (MMC)

11200 S.W. 8th Street
Green Library, Rooms GL 273, 274, 275
Miami, Florida 33199
Ph: (305) 348 6443

Biscayne Bay Campus (BBC)

3000 N.E. 151st Street
Hubert Library, Rooms HL 124 & 127
Miami, FL 33181
Ph: (305) 919 4294

email: gisrs@fiu.edu

We're on Facebook Too!

Don't forget that the FIU GIS Center has an active presence on Facebook too! If you haven't already, but sure to 'like' the GIS Center at FIU Libraries' page at:

<https://www.facebook.com/gis.fiu>



One of the historic map images to be included in the live GIS demonstration at this year's Miami International Map Fair. "A map of the West-Indes or the islands of America in the North Sea". Moll, Herman. [1715?]. Courtesy of HistoryMiami.

Dozens of ESRI's Premium Virtual Campus Courses Available for Free (for the FIU Community)

- 3D Visualization Techniques Using ArcGIS
- Address Geocoding with ArcGIS
- Basics of Map Projections
- Basics of Raster Data
- Creating 3D Data Using ArcGIS
- Georeferencing Rasters in ArcGIS
- Getting Started with the Geodatabase
- Image Processing with ArcGIS
- Python Scripting for Map Automation
- Regression Analysis Using ArcGIS
- Understanding GIS Queries

What do each of these ESRI Virtual Campus Courses have in common?

Each of these self-paced online courses is a so-called 'premium' course, typically carrying a fee of \$32 each.

However, as an FIU student, faculty, or staff member, you're entitled to register for any of these courses, and many, many more, for **absolutely free!**

To learn more, or to register for a particular ESRI course, contact the Maps & Imagery User Services Coordinator!

Happy Mapping, FIU!