

Fall 2012

# MIUS News: Maps and Imagery User Services @ FIU Green Library: Vol. 4, Issue 1 Fall 2012

Peter Harlem

*Map and User Imagery Services, Florida International University, [Peter.Harlem@fiu.edu](mailto:Peter.Harlem@fiu.edu)*

Follow this and additional works at: [https://digitalcommons.fiu.edu/mius\\_news](https://digitalcommons.fiu.edu/mius_news)



Part of the [Geographic Information Sciences Commons](#), [Physical and Environmental Geography Commons](#), and the [Remote Sensing Commons](#)

---

## Recommended Citation

Harlem, Peter, "MIUS News: Maps and Imagery User Services @ FIU Green Library: Vol. 4, Issue 1 Fall 2012" (2012). *MIUS News*. 7.  
[https://digitalcommons.fiu.edu/mius\\_news/7](https://digitalcommons.fiu.edu/mius_news/7)

This work is brought to you for free and open access by the FIU Libraries at FIU Digital Commons. It has been accepted for inclusion in MIUS News by an authorized administrator of FIU Digital Commons. For more information, please contact [dcc@fiu.edu](mailto:dcc@fiu.edu).

# MIUS NEWS

Maps and Imagery User Services @ FIU Libraries

Vol: 4  
Issue : 1  
Fall 2012

Visit Us At [gis.fiu.edu](http://gis.fiu.edu)

## GIS Courses Offered for Spring Semester, 2013

GIS 5050 - Environmental GIS (GIS Certificate course)

GLY 5754—Applied Remote Sensing in Earth Sciences (GIS Certificate course)

EVR 6268—Remote Sensing in Hydrology (GIS Certificate course)

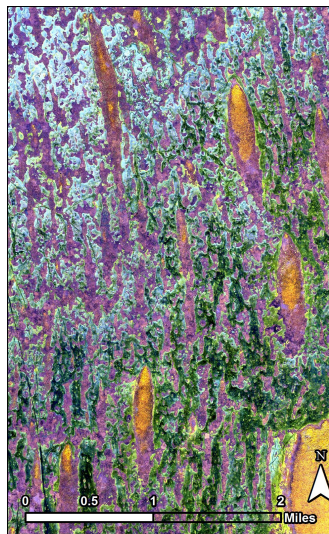
GIS 3043—Introduction to GIS (Non-Certificate)

For more information, visit the Future Classes page in the GIS Center web site at <http://gis.fiu.edu/education/classes/>



## Available at MIUS and the GIS Center

LandScan—This global population distribution database displays shifts in population based on the time of day, allowing more precise assessment and visualization in terms of demographics, socioeconomic factors, and risk in emergency situations.



High-resolution satellite data (2m) imagery for 371 km<sup>2</sup> of selected areas in the larger Everglades region.

## Cool Geospatial Web Tools!

In this election year, are you looking for a South Florida demographic data visualization tool with up-to-date information? Check out the interactive mapping and reporting system developed by the FIU GIS Center at: <http://mpotransportationoutreachplanner.org/topmap/>



Try Bike Broward, an online interactive trip planner for cyclists. You can find routes based on efficiency, scenery, or minimization of interaction with traffic. Versions for Miami-Dade and Palm Beach counties are coming soon. Visit <http://maps.fiu.edu/mpobike/>

## Where and When to Visit Us

### GIS Research Offices

- Green Library Room 275 — M-F, 9:30am to 5:30pm
- Hubert Library Room 127 — M-F, 9:30am to 5:00pm

### GIS Center Teaching Labs

- Green Library Room 274 — Regular library hours
- Green Library Room 540 — Scheduled classes and courses
- Hubert Library Room 124 — Regular library operating hours

### MIUS

Green Library Room 273 — Open Monday through Friday, 9:30am to 5:30pm



## Did You Know?

### Free Online Training

The GIS Center offers FREE on-line training from ESRI. Current students and faculty can request access to a large variety of self-paced courses. Visit the GIS Center web site at [gis.fiu.edu](http://gis.fiu.edu) and go to "Free Training" for more details.

### Mapping Help

Need help creating a map from scratch? The GIS Center provides customized map production and data modeling for an hourly fee. We can generate point data based on your GPS or address information; scan and/or digitize existing paper maps; convert scanned images into geo-referenced digital files; overlay custom data with GIS Center datasets, and more!

Visit [gis.fiu.edu](http://gis.fiu.edu) and click on "Map Publishing" under "Services" for details.

### One Year Free ArcMap Licence

A FREE one-year license for ESRI's ArcGIS software is available through the GIS Center to current students and faculty (for educational purposes only). Contact us via e-mail at [gisrs@fiu.edu](mailto:gisrs@fiu.edu), or call us at (305)348-0150 for your copy of the software and an activation code.

### Need a GPS Device?

Global Positioning System (GPS) units are available to current students, staff, and faculty for checkout from the Green Library Circulation Desk. Each

unit includes cables and accessories, excluding batteries and SD cards. Gather your own GPS data!

### Tell Us What You Want . . .

Submit suggestions for acquisition of new data and maps that would facilitate your research to [gisrs@fiu.edu](mailto:gisrs@fiu.edu).

### Fun Facts!

- GIS stands for Geographic Information Systems.
- With GIS software you can map almost any data that has a spatial location.
- Without GIS your cell phone wouldn't show you where you are!
- GIS rules Google Earth, too. Without GIS it is just a fancy globe.

## New Faces



Steve Switzer provides poster printing, class hosting reservations, and other GIS Center services at the new location in Hubert Library (HL 124 and 127) at BBC. A former Biscayne Bay Campus librarian, Steve joined the GIS team in the spring of 2011. Steve can be reached at (305)919-4294, at [sswitzer@fiu.edu](mailto:sswitzer@fiu.edu), or at [gisrs@fiu.edu](mailto:gisrs@fiu.edu).

Peter Harlem is the new GIS Coordinator and he provides poster printing for MMC, supervises the collection of atlases, historical aerial photography and maps located in the MIUS room, works on our research projects, and is responsible for GIS licenses. He is located in the Green Library (GL273D) at MMC. Formerly a research geologist at the Southeast Environmental Research Center where he pioneered mapping sea level rise from LiDAR data, he joined the GIS team in late summer of 2012. Pete can be reached at (305) 348-0150, at [harlemp@fiu.edu](mailto:harlemp@fiu.edu) or at [gisrs@fiu.edu](mailto:gisrs@fiu.edu).



**Libraries**

FLORIDA INTERNATIONAL UNIVERSITY



**MIUS**  
Map Imagery User Services  
Florida International University