

2019

## New Pathways to Access: The Institution Repository and University Archives as Partners in Advancing Access to Materials

Rhia Rae

Florida International University, rrae@fiu.edu

Jill V. Krefft

Florida International University, jkrefft@fiu.edu

Follow this and additional works at: <https://digitalcommons.fiu.edu/athenaeum>



Part of the [Digital Humanities Commons](#)

---

### Recommended Citation

Rae, Rhia and Krefft, Jill V. (2019) "New Pathways to Access: The Institution Repository and University Archives as Partners in Advancing Access to Materials," *Athenaeum: Scholarly Works of the FIU Libraries Faculty and Staff*. Vol. 0 , Article 3.

Available at: <https://digitalcommons.fiu.edu/athenaeum/vol0/iss1/3>

This work is brought to you for free and open access by the FIU Libraries at FIU Digital Commons. It has been accepted for inclusion in Athenaeum: Scholarly Works of the FIU Libraries Faculty and Staff by an authorized administrator of FIU Digital Commons. For more information, please contact [dcc@fiu.edu](mailto:dcc@fiu.edu).


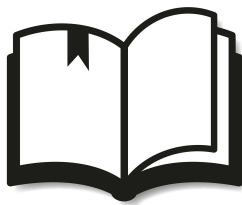

# NEW PATHWAYS TO ACCESS

## *The Institutional Repository and University Archives as Partners in Advancing Access to Materials*

JILL KREFFT AND RHIA RAE  
FLORIDA INTERNATIONAL UNIVERSITY LIBRARIES

### ABSTRACT

While University Archives (UA) maintains its traditional role of acquiring and curating collections of significance to the university community and the Institutional Repository (IR) supports access and reuse of these unique materials, the IR and the UA at Florida International University work closely with university departments, centers and museums to:

-  • Enhance access to archival materials and collections
-  • Support student learning
-  • Support new pathways to publishing scholarship

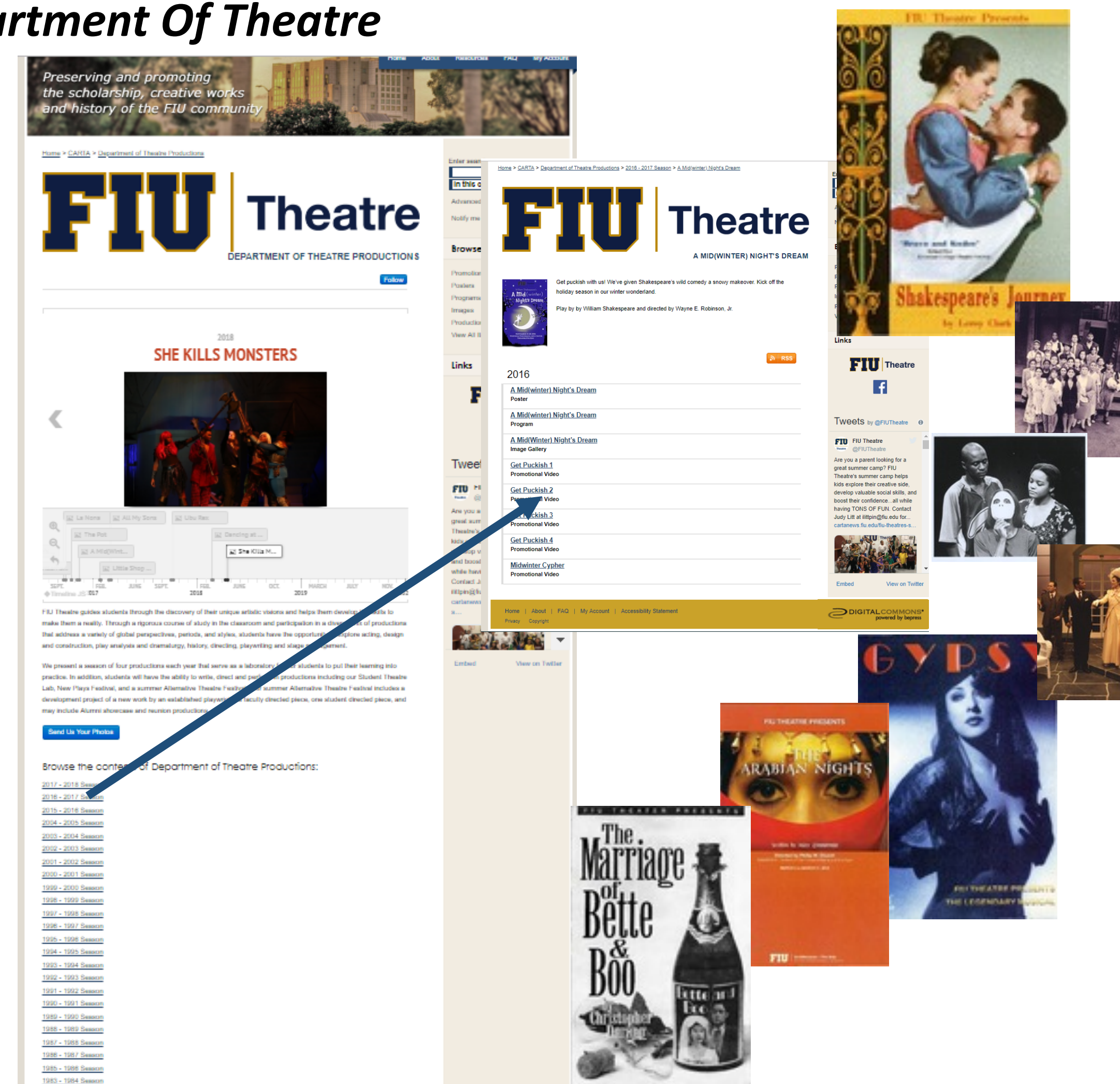
### OPPORTUNITIES

- Provide access to old formats, new formats and new scholarship.
- Outreach and education of the university community on the importance of University Archives.
- Demonstrating departmental achievements in a visible way.
- Showcasing student success.

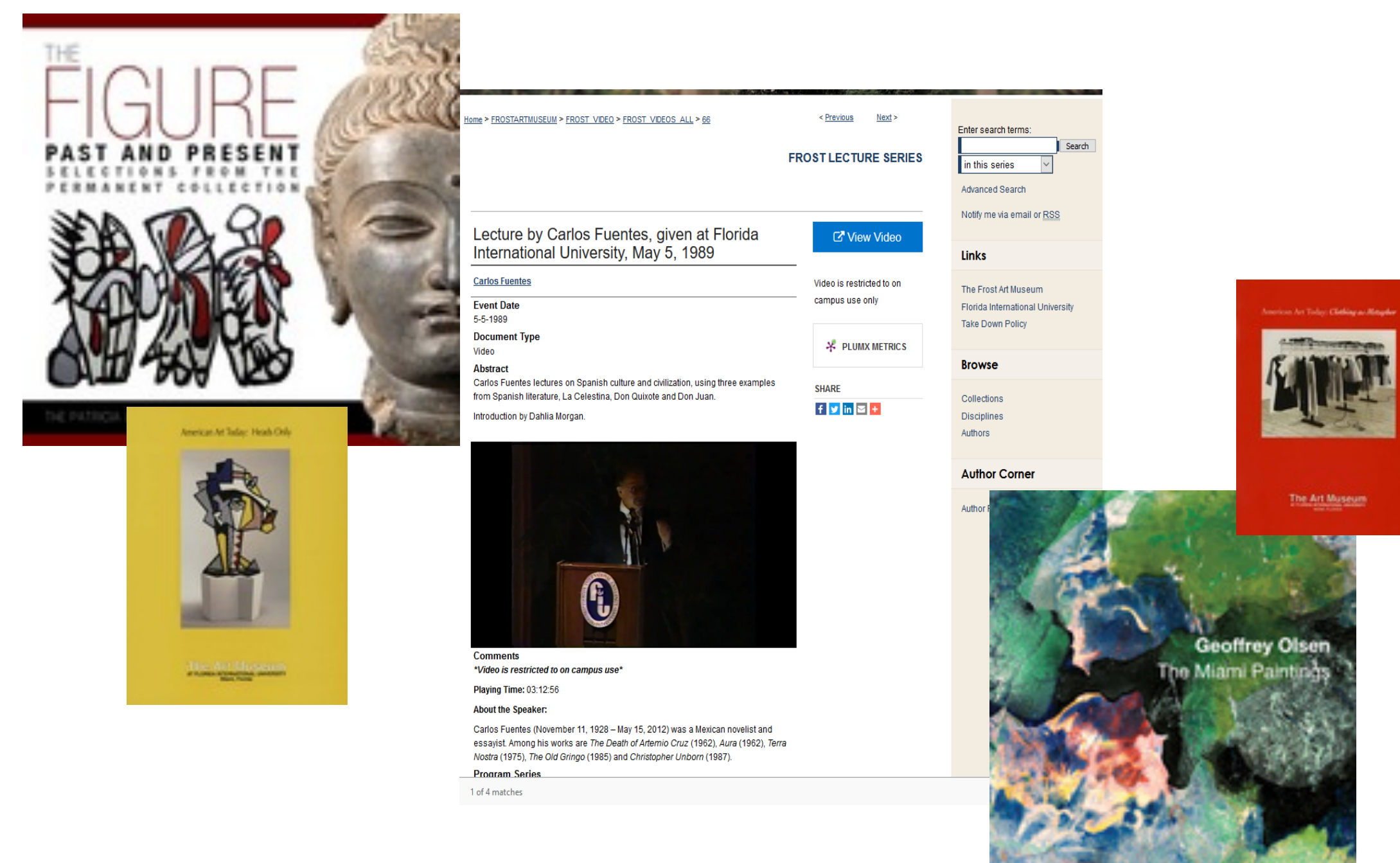
### CHALLENGES

- Helping the university community understand the need for archiving high quality born digital materials.
- Supporting emerging formats – What does preservation look like?

#### • The Department Of Theatre



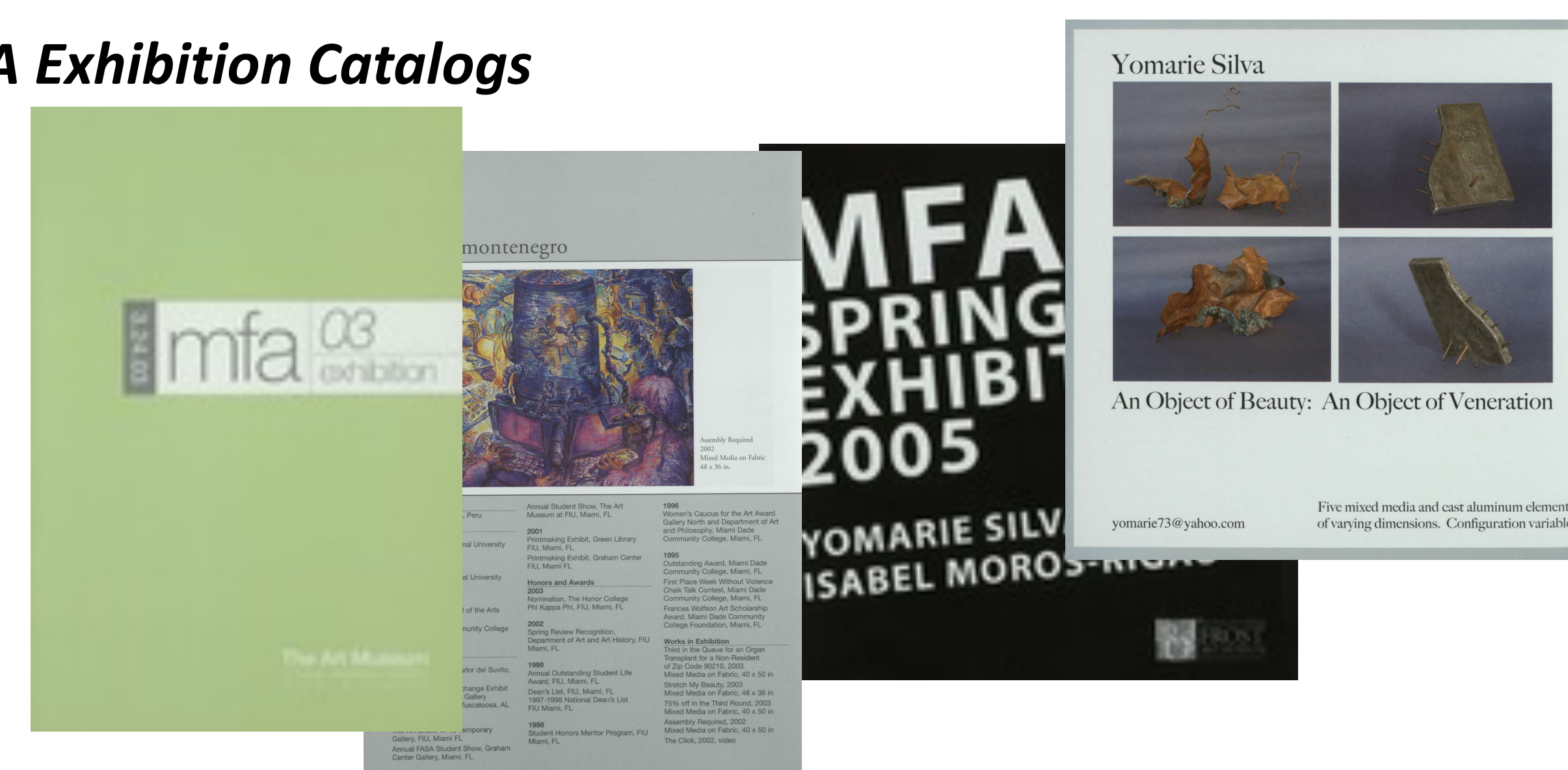
#### • Frost Art Museum Exhibition Catalogs & Recorded Lectures



#### • Miami Beach Urban Studios (MBUS) 3D Collection



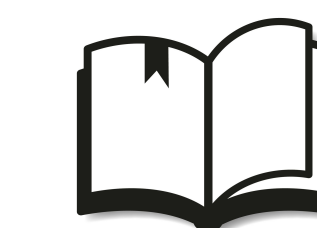
#### • MFA Exhibition Catalogs



### ENHANCE ACCESS TO ARCHIVAL MATERIALS

While many archival materials are made accessible via the university's digital repository system dPanther, the Institutional Repository, a Digital Commons repository, provides unique opportunities for sharing and displaying collections.

**The Department Of Theatre:** Using the event structure, the complete production history from 1975-present was easily organized and displayed using a timeline format. This supports easy browsing of over 1,600 photographs, programs, postcards and posters.



### SUPPORT STUDENT LEARNING

With enhanced access to UA materials through the IR, instructors and students have more opportunities to:

- Create a virtual space for scholarship and primary source materials that can be easily integrated into coursework.
- Create tangible interdisciplinary connections.
- Create context for these collections.

**Frost Art Museum:** A collection of 59 Exhibition Catalogs along with over 100 digitized recorded lectures by notable artists from 1981-present serves as a unique resources for students in the Arts.



### NEW PATHWAYS TO PUBLISHING SCHOLARSHIP

- Capability to preserve and promote scholarship from the performing arts.
- Provide students and faculty a new platform for publishing course related scholarship.

**Miami Beach Urban Studios (MBUS) 3D Collection:** Collection and display of the groundbreaking 3D-printed Tactile Neighborhood Model (or plan) designed to assist the blind and visually impaired in their orientation and mobility.

**Department of Theatre Final Projects:** Collection and display of originally written and performed theatrical productions.

**MFA Exhibition Catalogs:** Access to the MFA exhibition catalogs displayed at the Patricia and Phillip Frost Art Museum.