

2014

Maps of Sea Level Rise - Nautilus Island, Miami Beach, FL

Peter Harlem

Florida International University, harlemp@fiu.edu

Follow this and additional works at: https://digitalcommons.fiu.edu/sea_level_rise



Part of the [Climate Commons](#)

Recommended Citation

Harlem, Peter, "Maps of Sea Level Rise - Nautilus Island, Miami Beach, FL" (2014). *Sea Level Rise Collection*. 6.
https://digitalcommons.fiu.edu/sea_level_rise/6

This work is brought to you for free and open access by the Institute of Water and Environment at FIU Digital Commons. It has been accepted for inclusion in Sea Level Rise Collection by an authorized administrator of FIU Digital Commons. For more information, please contact dcc@fiu.edu.

Present Conditions



0 150 300 600 Yards



Nautilus Island
Miami Beach

Map by PW Harlem
FIU GIS Center
2014

1 Foot Sea Level Rise at Mean Higher-High Water Tide Level



0 150 300 600 Yards



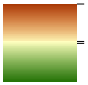
Nautilus Island
Miami Beach

Map by PW Harlem
FIU GIS Center
2014

2 Foot Sea Level Rise at Mean Higher-High Water Tide Level



 Inundation at MHHW

Topography
 High : 21
Low : 0

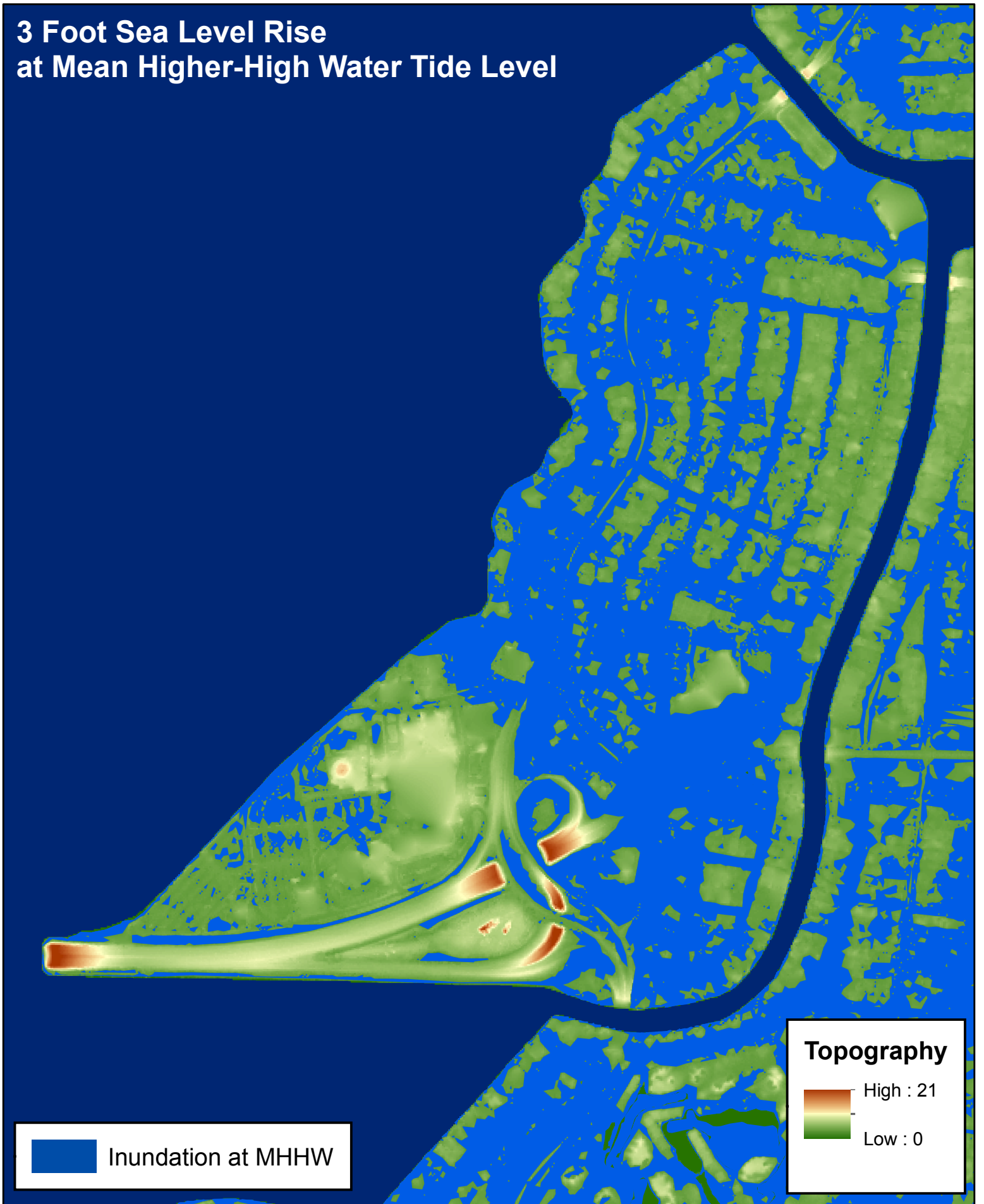
0 150 300 600 Yards



Nautilus Island
Miami Beach

Map by PW Harlem
FIU GIS Center
2014

3 Foot Sea Level Rise at Mean Higher-High Water Tide Level



Inundation at MHHW

Topography
High : 21
Low : 0

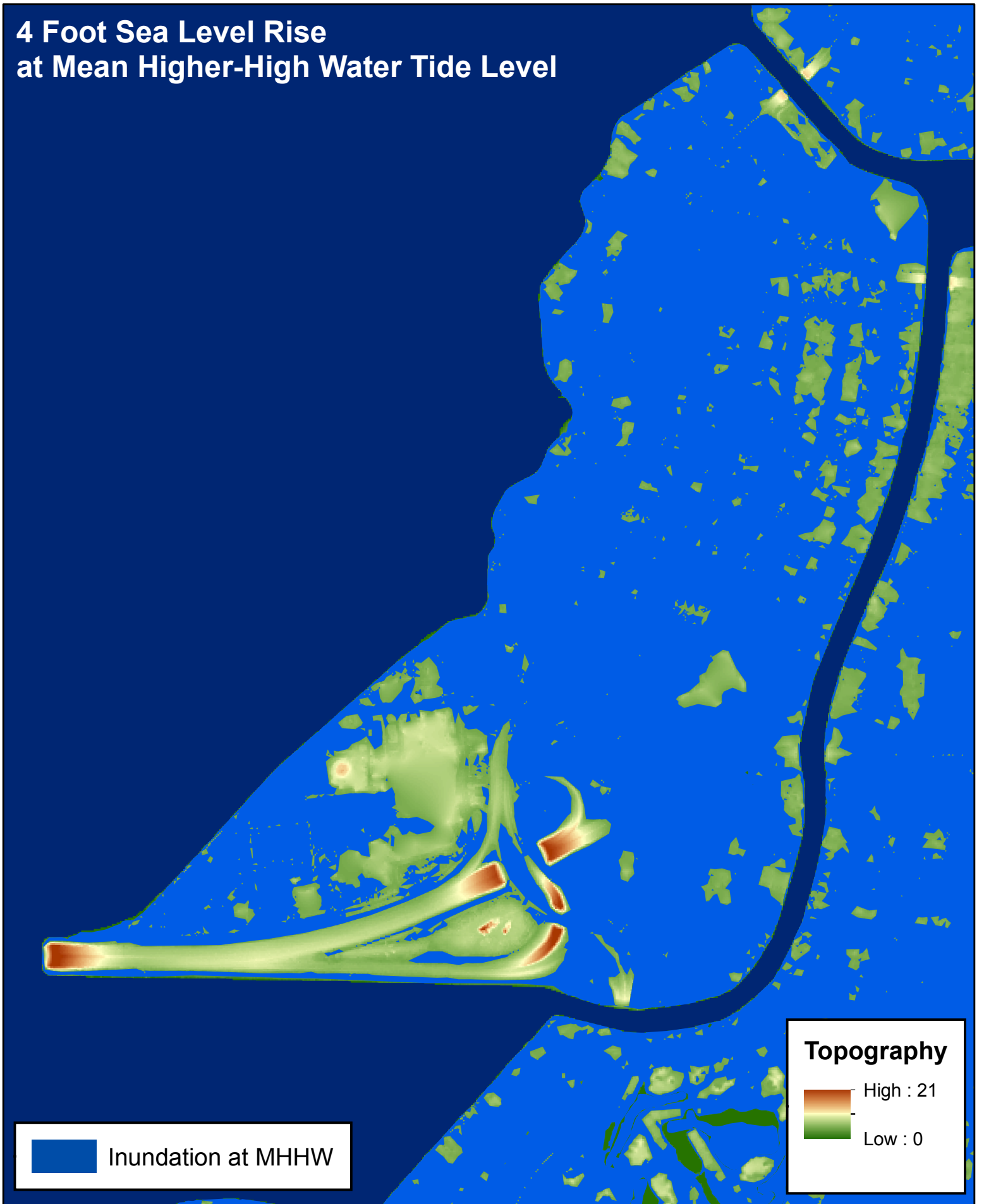
0 150 300 600 Yards



Nautilus Island
Miami Beach

Map by PW Harlem
FIU GIS Center
2014

4 Foot Sea Level Rise at Mean Higher-High Water Tide Level



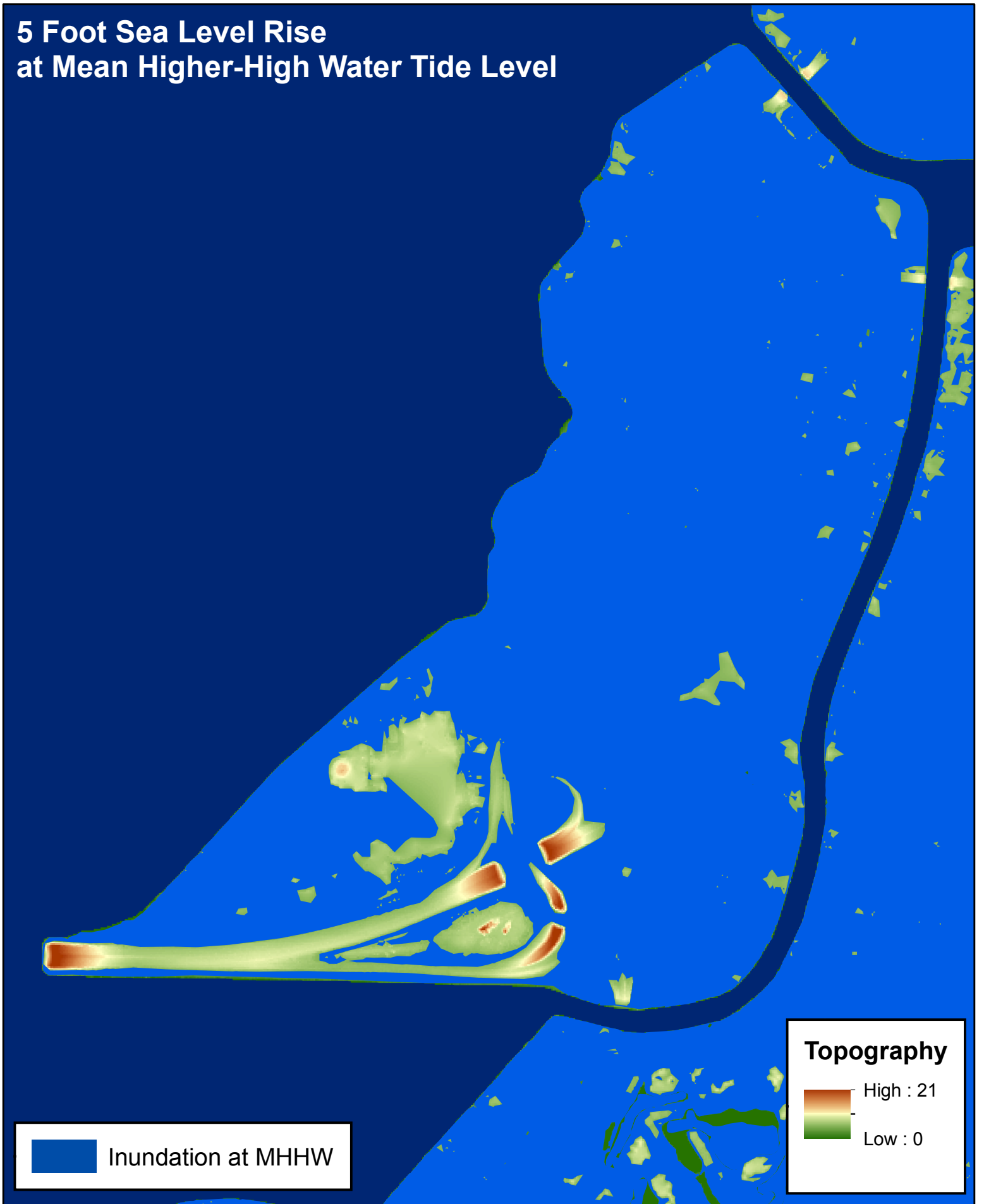
0 150 300 600 Yards



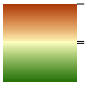
Nautilus Island
Miami Beach

Map by PW Harlem
FIU GIS Center
2014

5 Foot Sea Level Rise at Mean Higher-High Water Tide Level



 Inundation at MHHW

Topography
 High : 21
Low : 0

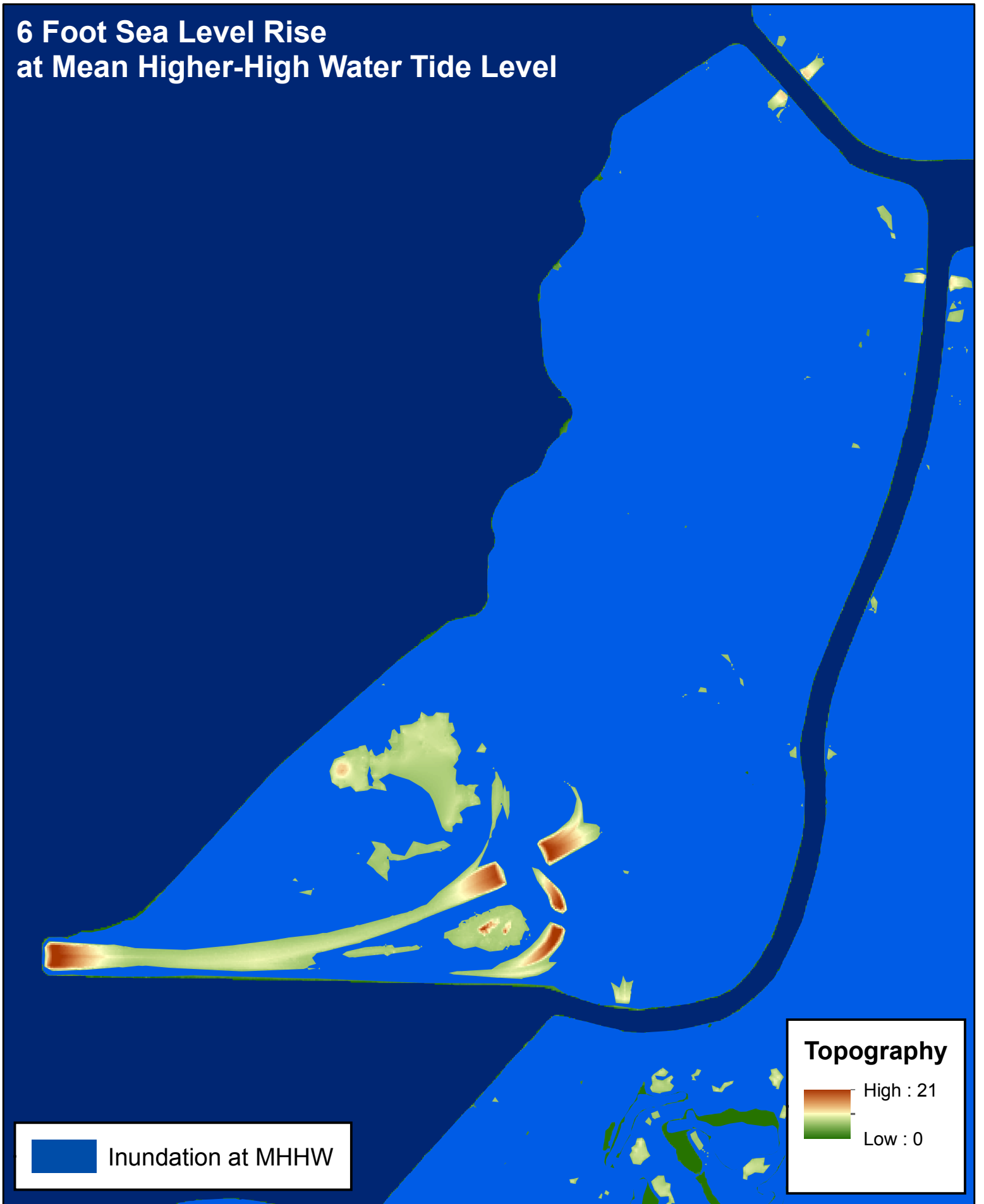
0 150 300 600 Yards



Nautilus Island
Miami Beach

Map by PW Harlem
FIU GIS Center
2014

6 Foot Sea Level Rise at Mean Higher-High Water Tide Level



0 150 300 600 Yards



Nautilus Island
Miami Beach

Map by PW Harlem
FIU GIS Center
2014