


Fall 2009

# MIUS News: Maps and Imagery User Services @ FIU Green Library: Vol. 3, Issue 1 Fall 2009

Jill V. Krefft

*Maps and Imagery User Services, Florida International University, [jkrefft@fiu.edu](mailto:jkrefft@fiu.edu)*

Follow this and additional works at: [https://digitalcommons.fiu.edu/mius\\_news](https://digitalcommons.fiu.edu/mius_news)

 Part of the [Geographic Information Sciences Commons](#), [Physical and Environmental Geography Commons](#), and the [Remote Sensing Commons](#)

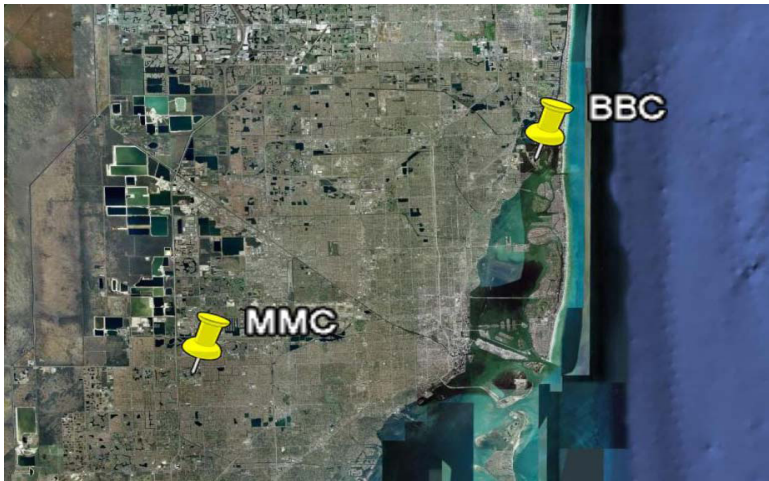
---

## Recommended Citation

Krefft, Jill V., "MIUS News: Maps and Imagery User Services @ FIU Green Library: Vol. 3, Issue 1 Fall 2009" (2009). *MIUS News*. 4.  
[https://digitalcommons.fiu.edu/mius\\_news/4](https://digitalcommons.fiu.edu/mius_news/4)

This work is brought to you for free and open access by the FIU Libraries at FIU Digital Commons. It has been accepted for inclusion in MIUS News by an authorized administrator of FIU Digital Commons. For more information, please contact [dcc@fiu.edu](mailto:dcc@fiu.edu).

## GIS Services Expanded at Biscayne Bay Campus



In an effort to better serve those students and faculty working with GIS at the Biscayne Bay Campus (BBC), the GIS Center has expanded the services available in the Biscayne Bay Library beginning in the Fall 2009 term.

Currently, there are two workstations equipped with ArcGIS Desktop 9.3.1 on the second floor of the BBC library in room 212. As part of the expanded services, computers will have

access to data, user account, and public drives of the GIS servers available at the Green Library in rooms 273 and 274. In addition, GIS Center staff will be available at the BBC library once a week, alternating Wednesdays and Fridays, for assistance. Please contact Jennifer Fu, GIS Center Head, at [fujen@fiu.edu](mailto:fujen@fiu.edu) to make an appointment. Services including access to ESRI Virtual Campus Courses, purchasing of licenses for lab and office computers, and map

production are all available to students faculty and staff working on the Biscayne Bay Campus.

Access to the BBC GIS workstations is available during library open hours  
Monday-Thursday 7:30am-1:00am,  
Friday 7:30am-10:00pm,  
Saturday 8:00am-8:00pm,  
Sunday 10:00am-1:00am.

For more information visit the GIS Center at <http://gislab.fiu.edu>.



## A Glance at MIUS's Geo-spatial Data Collection

- Florida public access spatial data sets searchable via FTP, including political boundaries, facilities, LandCover, LandUse, hydrology, vegetation etc.;
- Latin American and Caribbean spatial data sets;
- East Africa Spatial datasets;
- Detailed shore line data of the United States;
- LandSAT Imagery;
- Complete ESRI maps and data;
- Comprehensive Florida State and County data sets;



**Find Data using the MIUS Data Search available at <http://mius.fiu.edu> or visit us in GL 273.**

## New Resources Available in MIUS

### Miami Dade High Resolution Imagery

MIUS has purchased the GeoEye-1 imagery for Central and South Miami Dade County (see figure 1). GeoEye -1 offers the world's highest resolution commercial earth-imaging satellite. It offers spatial resolution by simultaneously acquiring 0.41-meter panchromatic and 1.65-meter multispectral imagery. The acquired imagery has been rectified using Miami Dade County's 1-foot resolution aerial photographs (State Plane, NAD 83).

For the area cover by the larger bounding box shown in figure 1, we have the GeoEye archival imagery; for the area covered smaller bounding box, the imagery was acquired April 2008.

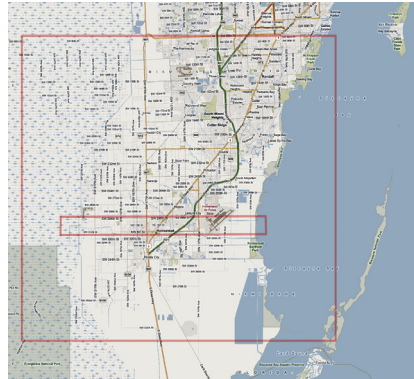


Figure 1

### Real Estate Plats with Aerial Photos, Miami Dade 1973.

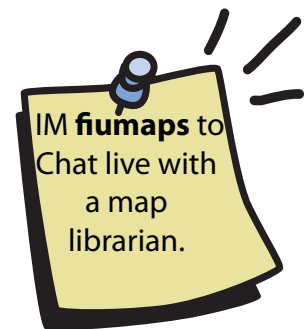
Through a generous gift to the FIU libraries, MIUS has acquired a four volume set of real estate plats for Miami Dade County from 1973. These plats include black and white aerial photography at 1"=300'. The plats are available for in library use only and can be obtained from MIUS in GL273.

### MaxQDA

MAXQDA is a state-of-the-art instrument for professional text analysis. As one of the pioneers in the field (the first version was released in 1989) it is the number one choice for researchers and research institutions from a wide range of scientific disciplines across the world. Through collaboration with the Department of Global and Sociocultural Studies (G&SS), all computers in the GIS Lab and MIUS are equipped with this software. Dr. Sarah J. Mahler from G&SS Department initiated this software license and is currently using it for her teaching and research.

### A Reminder...

FIU Libraries are committed to providing library instruction to students and faculty to help build their information literacy skills. MIUS provides a number of information literacy and GIS training opportunities for students in the form of workshops, customized class sessions, and informal education through exhibitions and lectures. ESRI Virtual Campus courses are also available at no charge for students and faculty as another learning resource. Always make sure to check the MIUS home page for upcoming workshops and events.



### Upcoming Events...

**Mapping the Everglades**-An exhibition of the mapping of the Everglades over the past 100 years. Spring Term 2010

**GIS Day**- A series of 30 minute presentations on GIS applications and research by faculty and graduate students. Spring Term 2010.